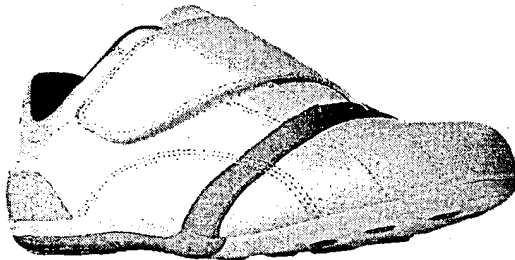


21: A2008/00246. 22: 14 February 2008. 23: —.
 DR: 09-02-2009.
 52: Class 2. 24: Part A.
 71: Lacoste.
 33: OHIM(FR). 31: 000785944. 32: 7 September 2007.
 54: **Footwear uppers.**

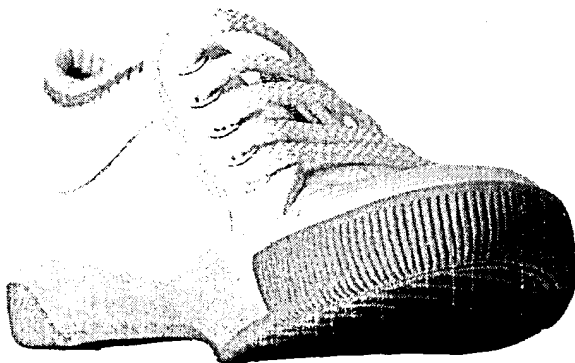
57: The design is for a footwear upper. The upper has a large, asymmetrical, unitary panel which extends from a slightly raised toe around the upper; a broad panel which arcs over a bridge of the upper below a plain tongue and a roughly inverted T-shaped heel panel which hugs the heel and extends around the sides, to the sole. The unitary panel has a prominent strap which extends from the sole on the inner side, over the bridge and the tongue to the outer side. Three closely spaced apart, arcuate, stitched lines extend from the sole upward on either side of the upper. Two vertical, parallel lines of stitching extend adjacent to the vertical leg of the heel panel and converging lines of stitching extend from the toe towards the tongue. On the inner side a curvilinear line of stitching extends adjacent to but spaced from the upper periphery.



Three dimensional view

21: A2008/00245. 22: 14 February 2008. 23: —.
 DR: 09-02-2009.
 52: Class 2. 24: Part A.
 71: Lacoste.
 33: OHIM(FR). 31: 000785944. 32: 7 September 2007.
 54: **Footwear uppers.**

57: The design is for a footwear upper particularly for a lace-up shoe. The upper is symmetrical and has elongate side panels which extend from a heel towards a toe on either side; a very broad ribbed, material collar which lines the upper margin of the side panels and together with a tongue, defines a mouth; a roughly semi-circular toe panel which extends over the top of the toe toward the sole; and elongated facings on each side of the tongue which extend toward the sole. Binding extends along the upper periphery of the side panels and on the lower margin of the elongated facings. Each of the strips has a series of eyelets for laces. A thin strip of material extends over the height of the heel and is flanked by two lines of stitching on either side which obliquely extend toward the sole. On the vamp two stitch lines replicate a wing tip type toe cap.



Three dimensional view

21: A2008/00322. 22: 22 February 2008. 23: —.
 DR: 10-02-2009.
 52: Class 9. 24: Part A.
 71: Deutsche Sisi-Werke GmbH & Co. Betriebs KG.
 33: US. 31: 29/283,776. 32: 23 August 2007.
 54: **Drinking pouches.**

57: The design is for a drinking pouch having a body consisting of two identical flexible sheets which are connected together along their matching peripheries, to define a liquid holding cavity between the sheets. The body has a generally rectangular outline when viewed front-on, tapering somewhat from bottom to top. Upper and lower edges of a peripheral rim portion, where the sheets are connected, are straight, with two symmetrical part-circular recesses being defined in side edges of the peripheral rim portion, so that the pouch has a slight waist.



Three dimensional view

21: A2008/00323. 22: 22 February 2008. 23: —.
 DR: 10-02-2009.
 52: Class 9. 24: Part A.
 71: Deutsche Sisi-Werke GmbH & Co. Betriebs KG.
 33: US. 31: 29/283,776. 32: 23 August 2007.
 54: **Drinking pouches.**

57: The design is for a drinking pouch having a body consisting of two identical flexible sheets which are connected together along their matching peripheries, to define a liquid holding cavity between the sheets. The body has a generally rectangular outline when viewed front-on, tapering somewhat from bottom to top. Upper and lower edges of a peripheral rim portion, where the sheets are connected, are straight, with two symmetrical part-circular recesses being defined in side edges of the peripheral rim portion, so that the pouch has a slight waist. A mouth is defined in the upper edge of the rim portion, the mouth allowing passage to a slot in the body of the pouch, the volume of the slot defining an inverted cone-shaped rise in an upper third of front and rear surfaces of the pouch.



Three dimensional view