

CONTENTS**INHOUD**

No.	Page No.	Gazette No.	No.	Bladsy No.	Koerant No.
GOVERNMENT NOTICE			GOEWERMENSKENNISGEWING		
Transport, Department of			Vervoer, Departement van		
Government Notice			Goewermentskennisgewing		
262			262		
South African National Roads Agency Limited and the National Roads Act (7/1998): The South African National Roads Agency Limited: Declaration amendment of National Road N1 Section 17: Amendment of Declaration No. 124 of 1985 and 2360 of 1987.....			Suid-Afrikaanse Nasionale Padagentskap Beperk en die Nasionale Paale Wet (7/1998): Die Suid-Afrikaanse Nasionale Padagentskap Beperk: Verklaring wysiging van Nasionale Pad N1 Seksie 17: Wysiging van Verklarings No. 124 van 1985 en 2360 van 1987.....		
	2	30839		3	30839

GOVERNMENT NOTICE
GOEWERMENSKENNISGEWING

DEPARTMENT OF TRANSPORT
DEPARTEMENT VAN VERVOER

No. 262

7 March 2008

THE SOUTH AFRICAN NATIONAL ROADS
AGENCY LIMITED

Registration No: 98/09584/06

Registration No: 98/09584/06

DECLARATION AMENDMENT OF NATIONAL ROAD N1 SECTION 17

DECLARATION AMENDMENT OF NATIONAL ROAD N1 SECTION 17

AMENDMENT OF DECLARATIONS NO. 124 OF 1985 AND 2360 OF 1987.

By virtue of section 40 (1)(b) of the South African National Roads Agency Limited and the National Roads Act, 1998 (Act No. 7 of 1998), I hereby amend the following declarations by substituting (I) the whole of Declaration No. 124 of 1985 and (II) Declaration No. 2360 of 1987 sheet 1 of Plan No. P220/73, with the subjoined sheets 1 to 13 of Plan No. P615/07.

(National Road N1 Section 17: La Porte Vase – Nooitgedacht)


MINISTER OF TRANSPORT

No. 262

7 Maart 2008

**DIE SUID-AFRIKAANSE NASIONALE
PADAGENTSKAP BEPERK**

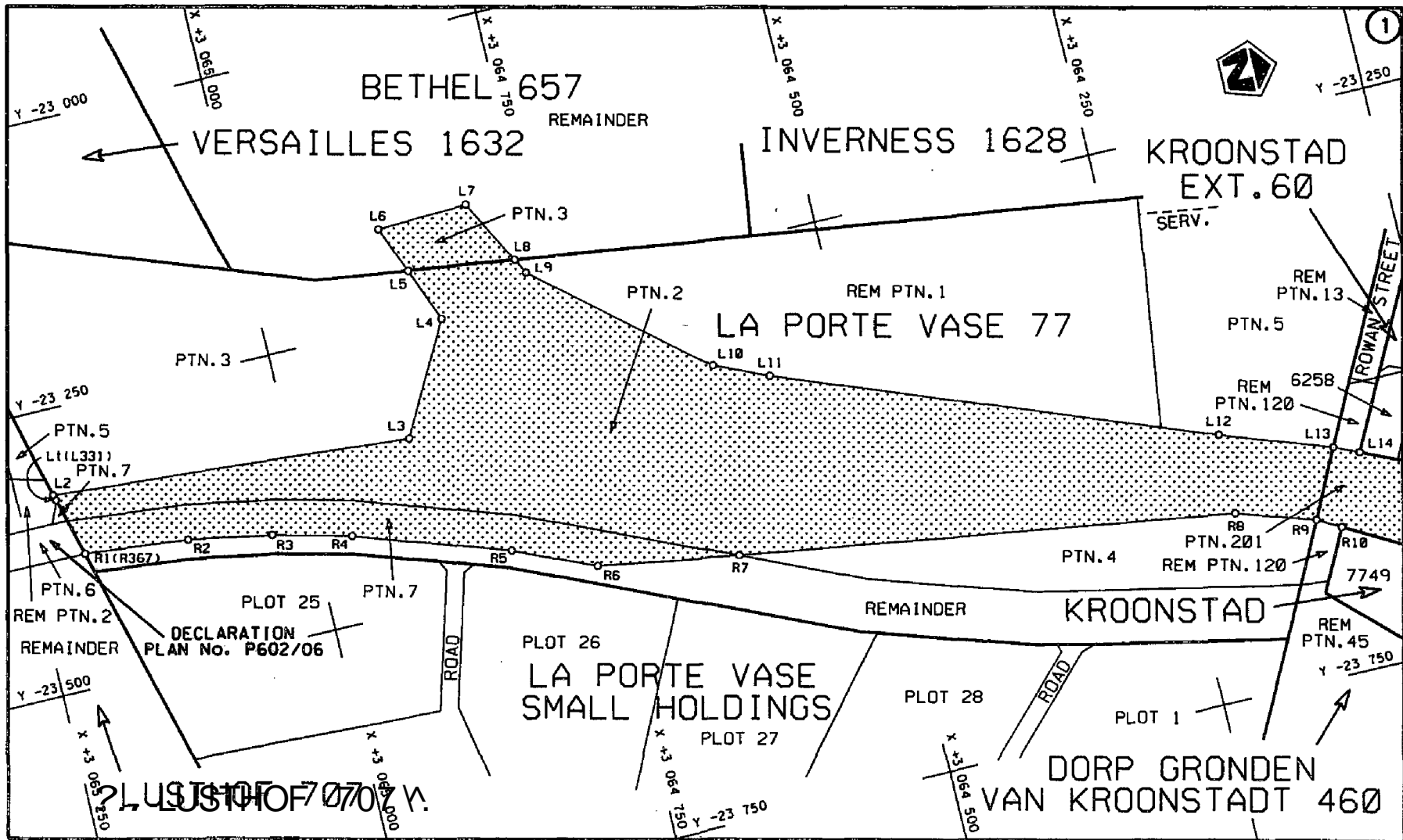
Registrasie No: 98/09584/06

Registrasie No: 98/09584/06

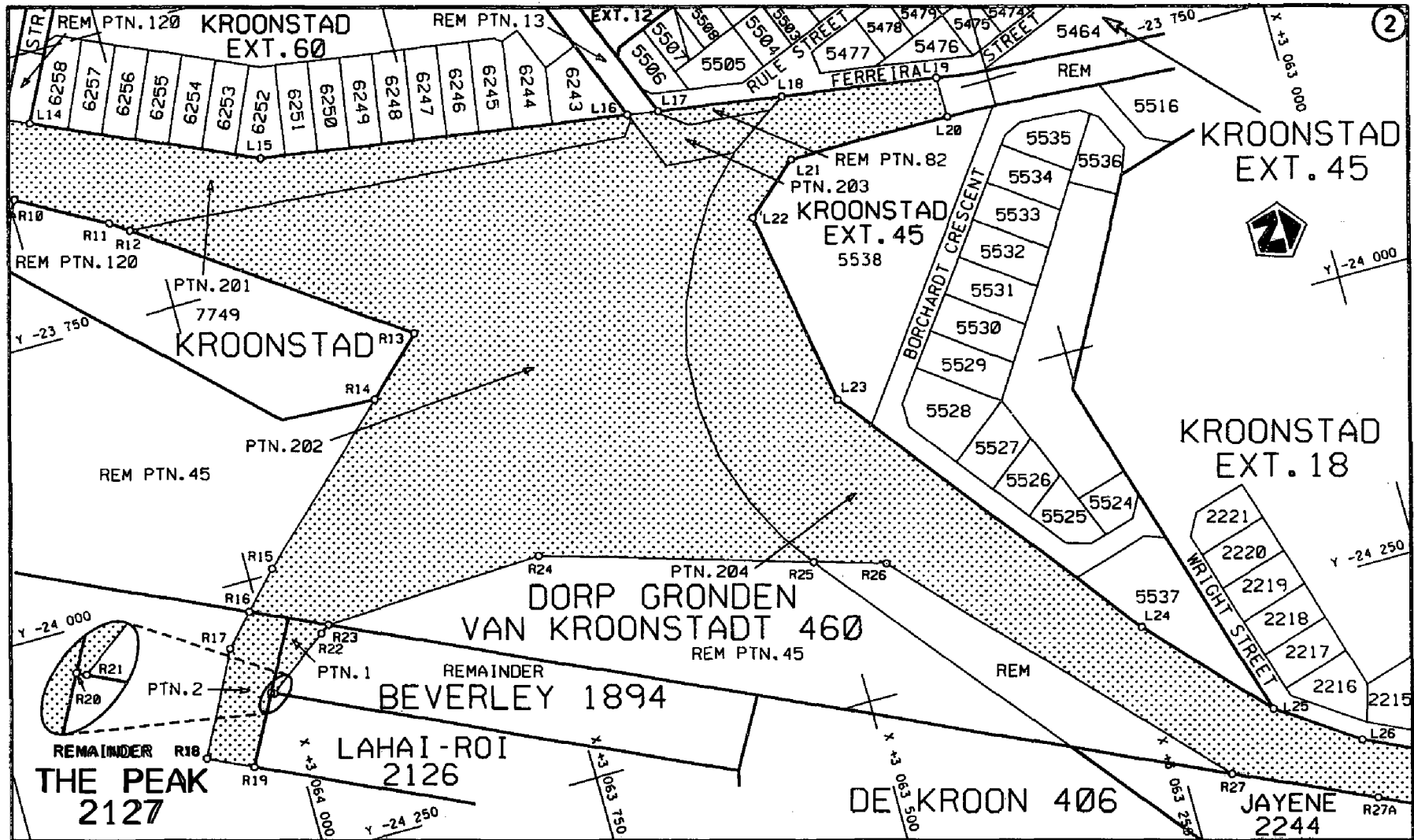
VERKLARING WYSIGING VAN NASIONALE PAD N1 SEKSIE 17.**VERKLARING WYSIGING VAN NASIONALE PAD N1 SEKSIE 17.****WYSIGING VAN VERKLARINGS NO. 124 VAN 1985 EN 2360 VAN 1987.**

Kragtens Artikel 40(1)(b) van die Suid Afrikaanse Nasionale Padagentskap Beperk en die Nasionale Paale Wet, 1998 (Wet No.7 van 1998), wysig ek hiermee die volgende verklarings deur (I) Verklaring no. 124 van 1985 in sy geheel en (II) Verklaring no.2360 van 1987 vel 1 van Plan no. P2220/73, te vervang met meegaande velle 1 tot 13 van Plan no. P615/07.

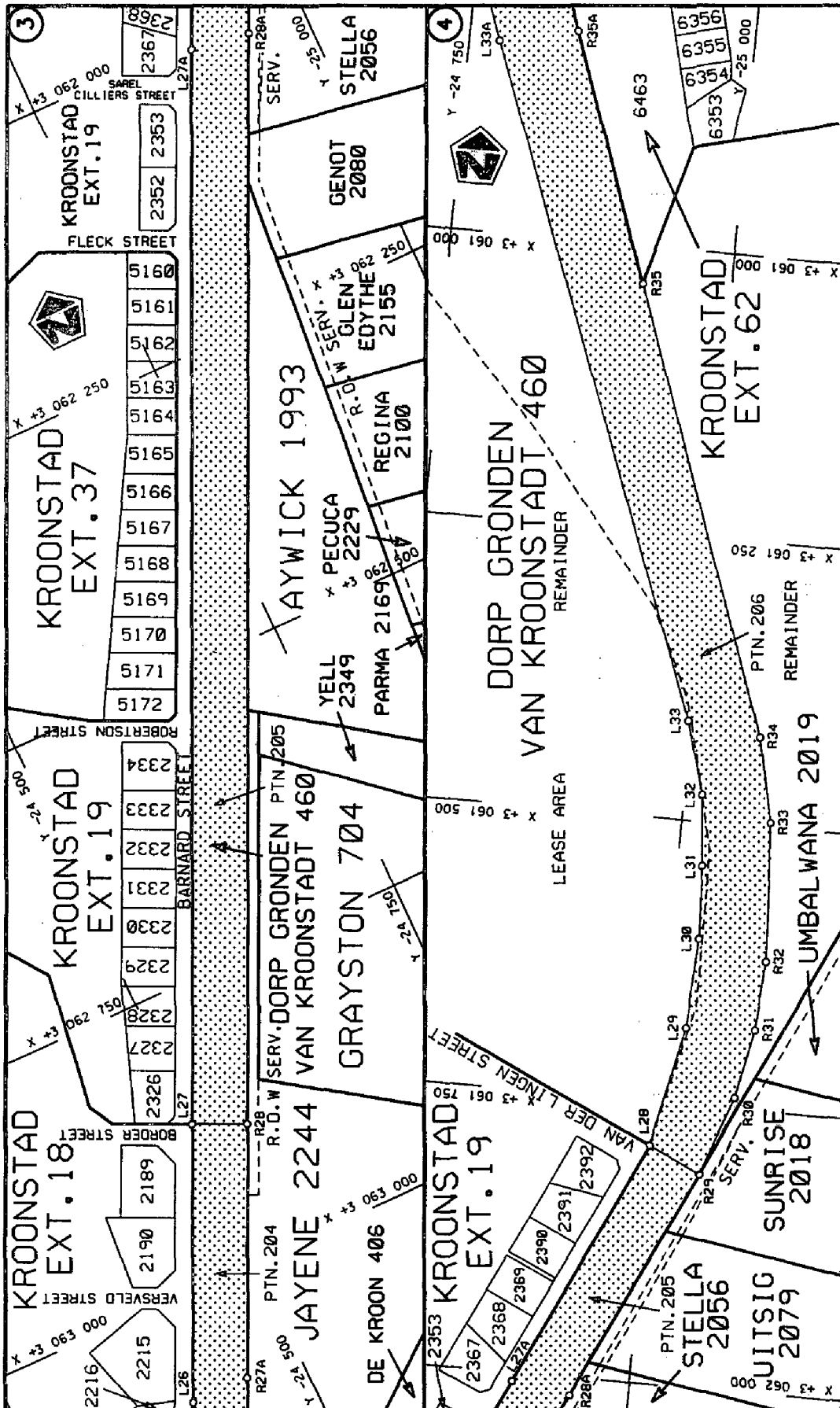
(Nasionale Pad N1 Seksie 17: La Porte Vase – Nooitgedacht)**MINISTER VAN VERVOER**



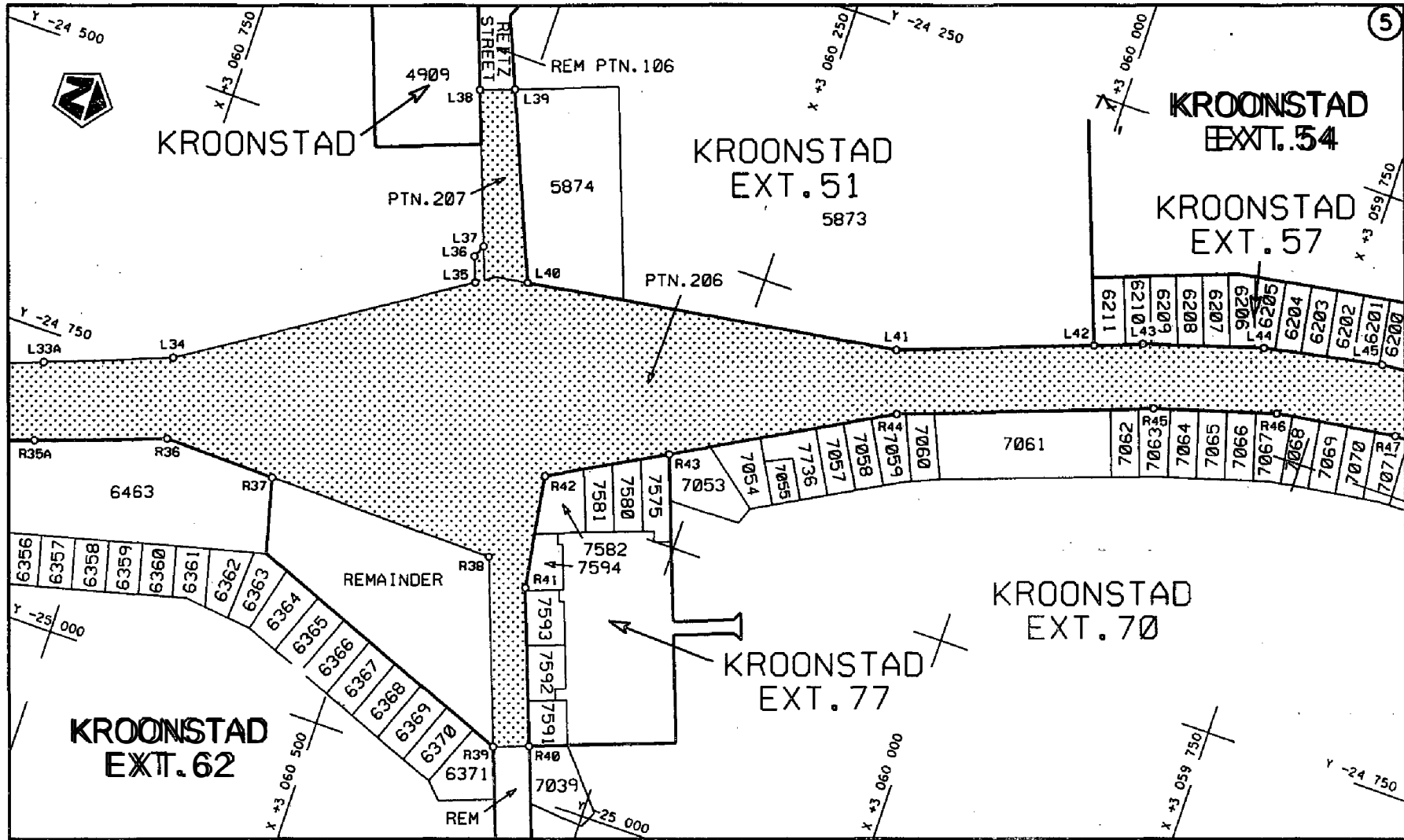
<p>Die Suid Afrikaanse Nasionale Padogenskap Beperk</p>	<p>Die figuur getoon</p>		<p>stel die padreserwe voor van 'n gedeelte represents the road reserve of a portion</p>	<p>Vel Sheet 1 van of 13</p>
<p>The South African National Roads Agency Limited</p>	<p>The figure shown</p>		<p>von Nasionale Roete of National Route M1 Seksie Section 17</p>	<p>Rion P615/07</p>

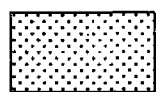


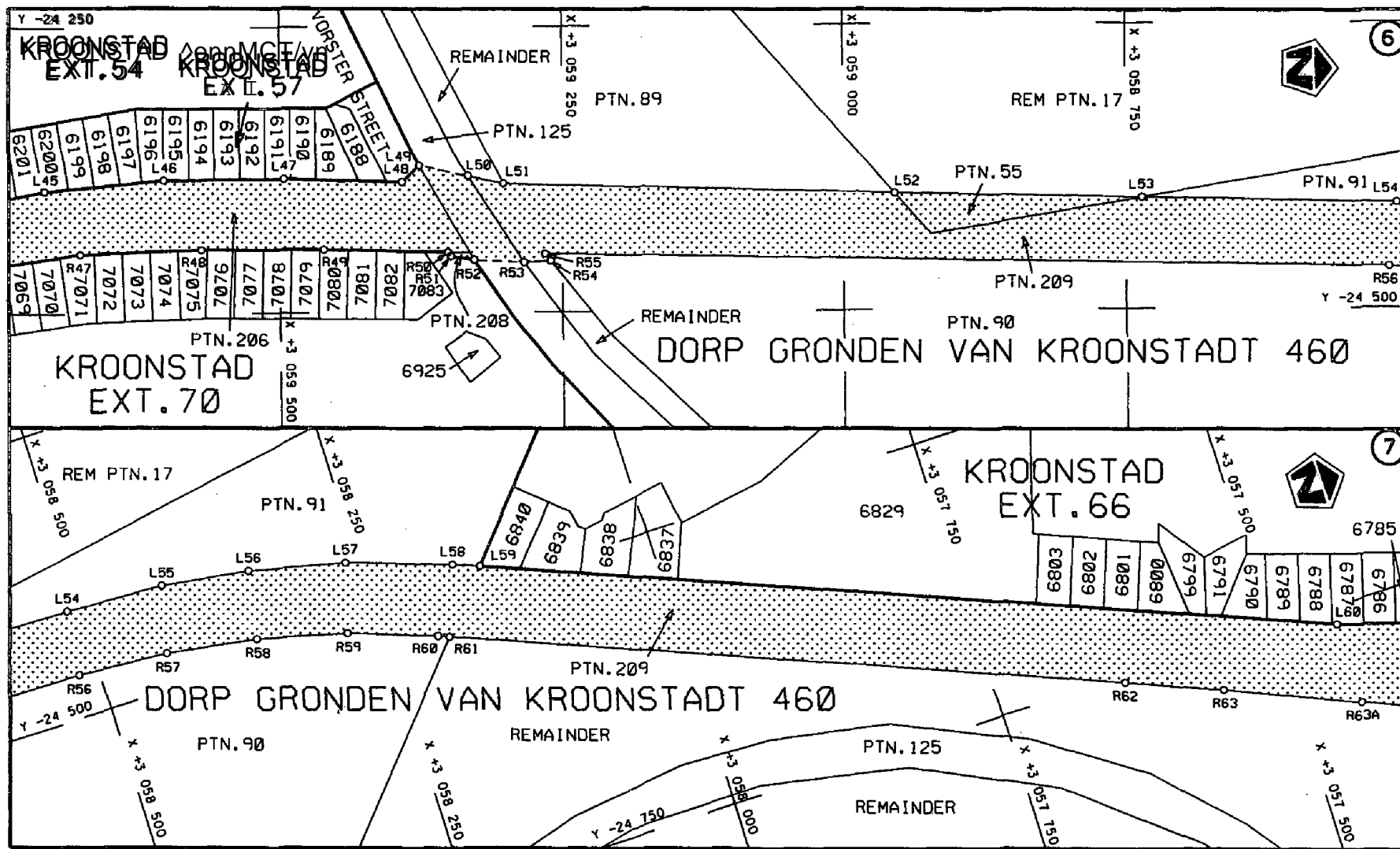
Die Suid Afrikaanse Nasionale Padogenskap Beperk	Die figuur getoon		stelsel padreserwe voor van 'n gedeelte represents the road reserve of a portion van Nasionale Roste of National Route	Vel Sheet $\frac{2}{13}$ van of
The South African National Roads Agency Limited	The figure shown		M1 Seksie Section 17	Plan P615/07

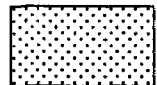


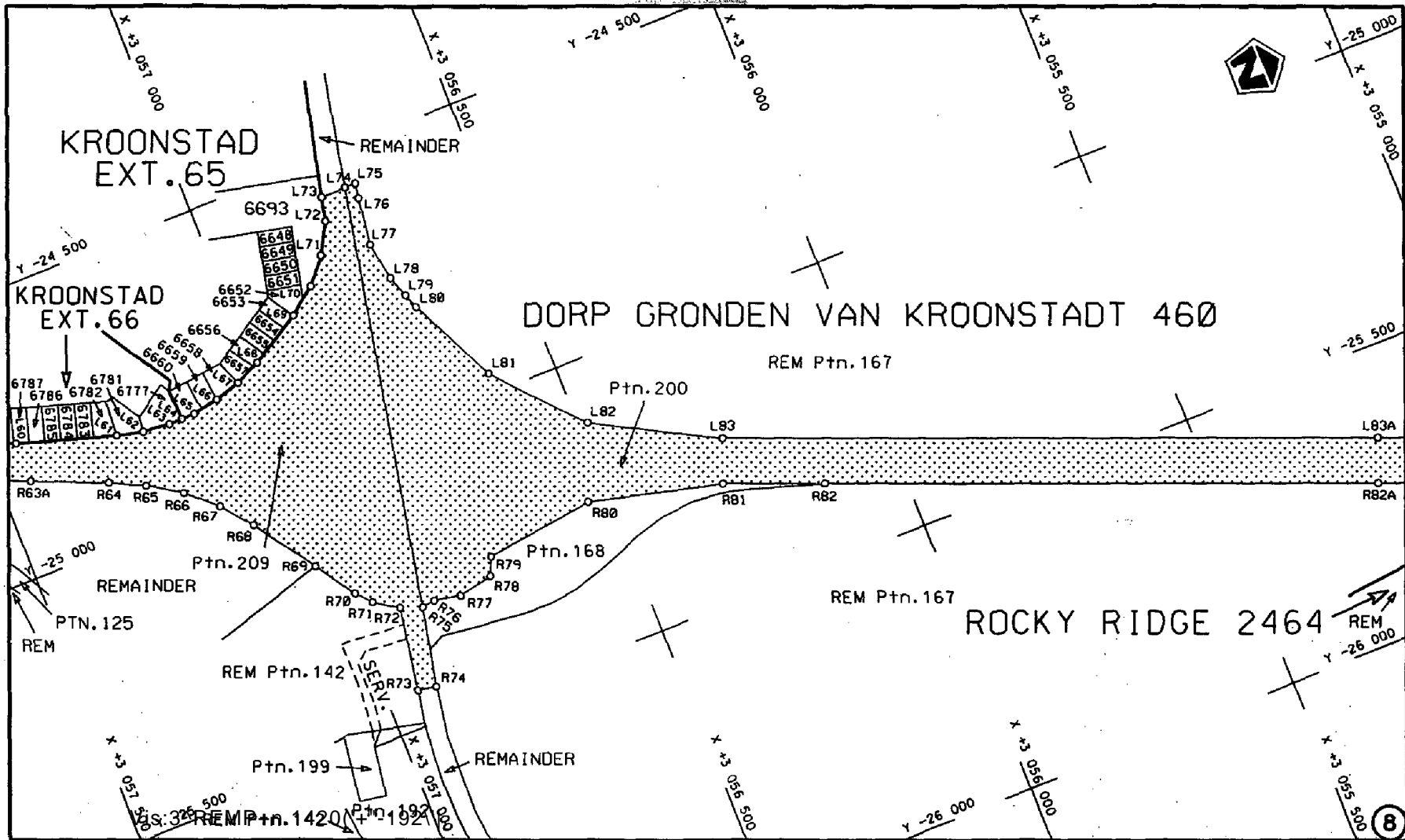
<p>Die n Map of the National Route N1 is published by Podogentskop Bepark The National Roads Agency Limited</p>	<p>Die figuur toon F The figure</p>	<p>stelsel van padreserwe voor van 'n gedeelte represents the road reserve of a portion of the National Route N1 Section</p>	<p>Vel Sheet 13 of 17 Plan P815/07</p>
--	--	--	--



Die Suid Afrikaanse Nasionale Padogenskap Beperk The South African National Roads Agency Limited	Die figuur getoon The figure shown	 steldie podreserwe voor van 'n gedeelte represents the road reserve of a portion van Nasionale Roete of National Route	Vel Sheet 4 van of 13
		N1 Seksie Section 17	Roon P615/07

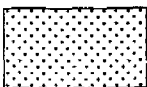


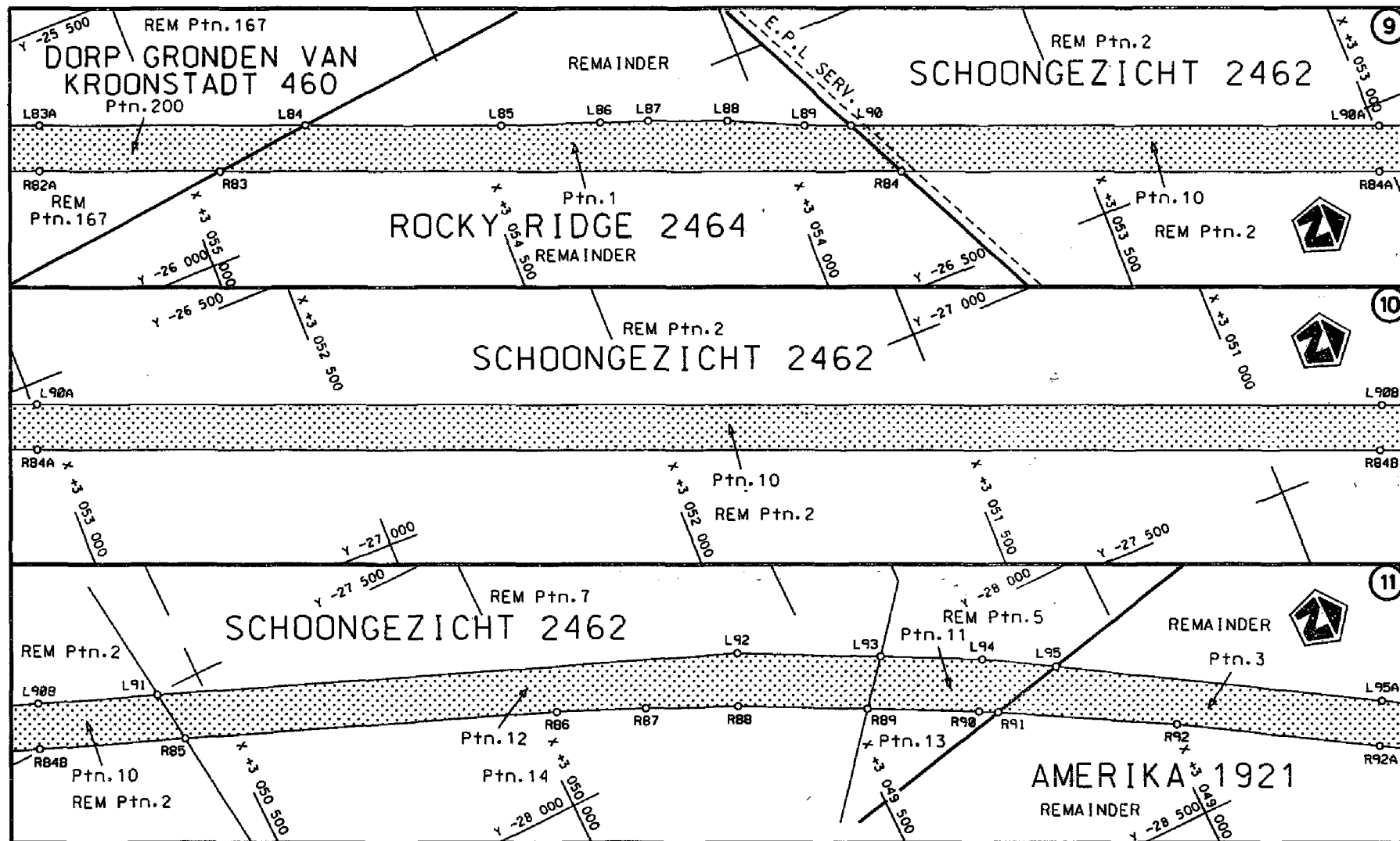
<p>Die Suid Afrikaanse Nasionale Podogenskop Beperk The South African National Roads Agency Limited</p>	<p>Die figuur getoon The figure shown</p> 	<p>stelt die podreserwe voor van 'n gedeelte represents the road reserve of a portion van Nasionale Roete of National Route</p> <p>KH1 Sektie Section</p> <p>17</p>	<p>Vel Sheet</p> <p>5 van of 13</p> <p>Plan P615/07</p>
---	---	---	---

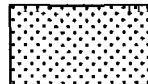


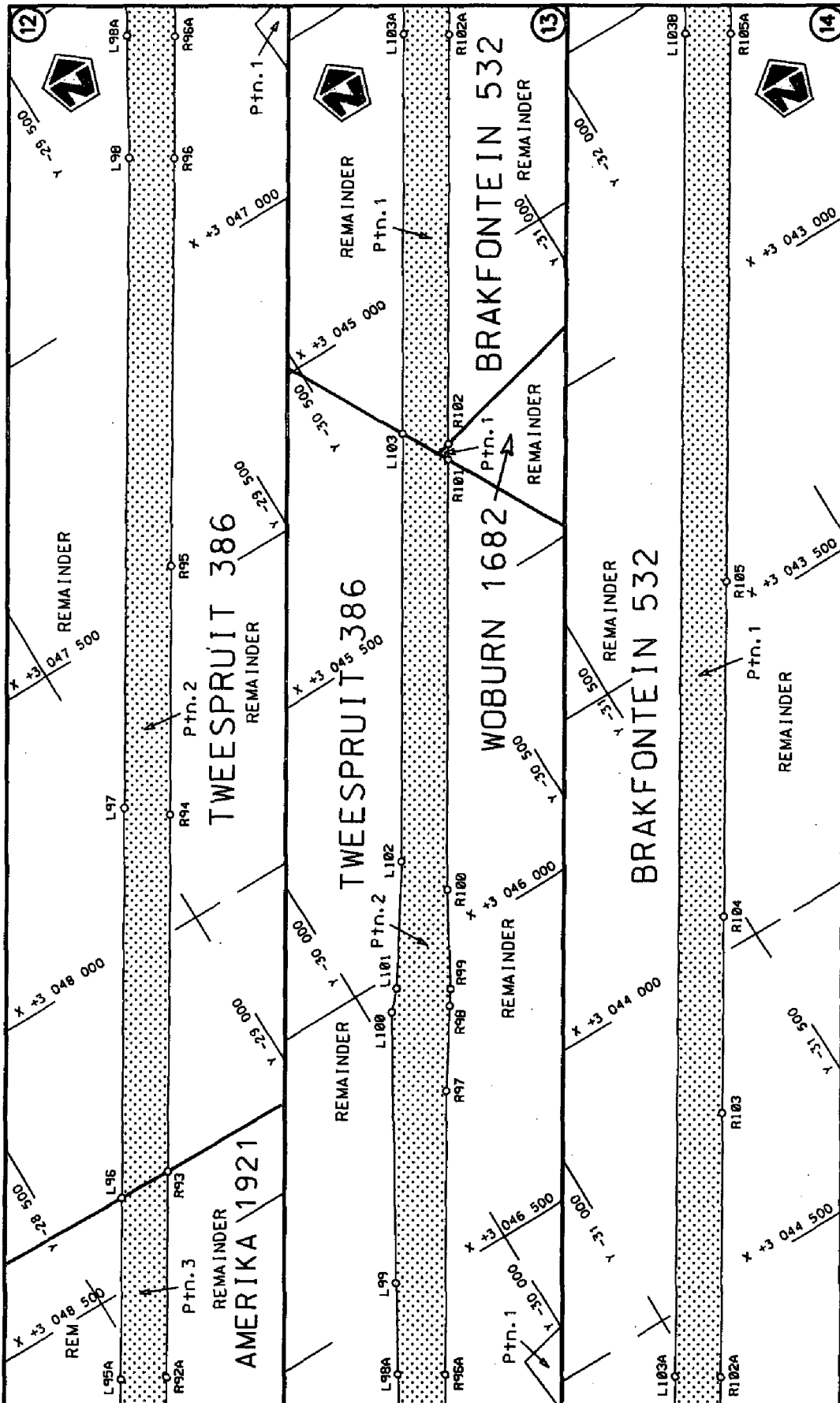
STAATSKOERANT, 7 MAART 2008

No. 30839. 9

Die Suid Afrikaanse Nasionale Podogenskep Beperk The South African National Roads Agency Limited	Die figuur getoon The figure shown		steldie podreserve voor van 'n gedeelte represents the road reserve of a portion von Nasionale Roete M-1 Seksie of National Route Section 17	Vel Sheet 8 von of 13 Plan P61E5/07
---	---------------------------------------	---	---	--



<p>Die Suid Afrikaanse Nasionale Podogentskap Beperk The South African National Roads Agency Limited</p>	<p>Die figuur getoon The figure shown</p> 	<p>stelsel podereserve voor van 'n gedeelte represents the road reserve of a portion van Nasionale Roete of National Route</p> <p>M7</p> <p>Seksie Section</p> <p>17</p>	<p>Vel Sheet</p> <p>7 van 13</p> <p>Plan P615/07</p>
--	--	--	--



Die Suid-Afrikaanse Nasionale Podopedestak **Beaumont** Limited
 The South African National Podopedestak **Beaumont** Limited

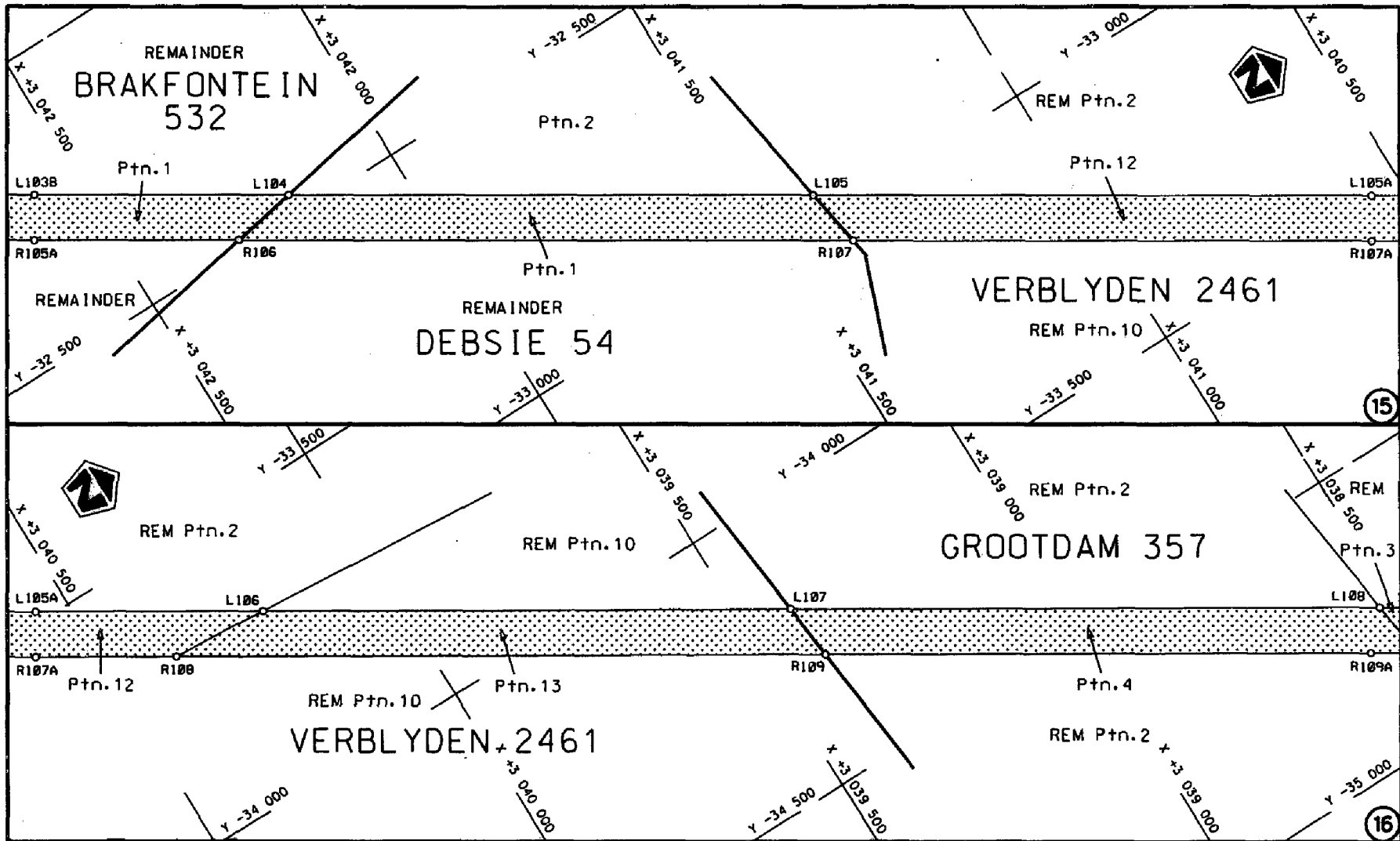
Die figuur getoon
 The figure shown


Die hierin getoonde plan is 'n afskrif van 'n oorspronklike plan wat deur die Podopedestak van die Republiek van Suid-Afrika uitgegee is.

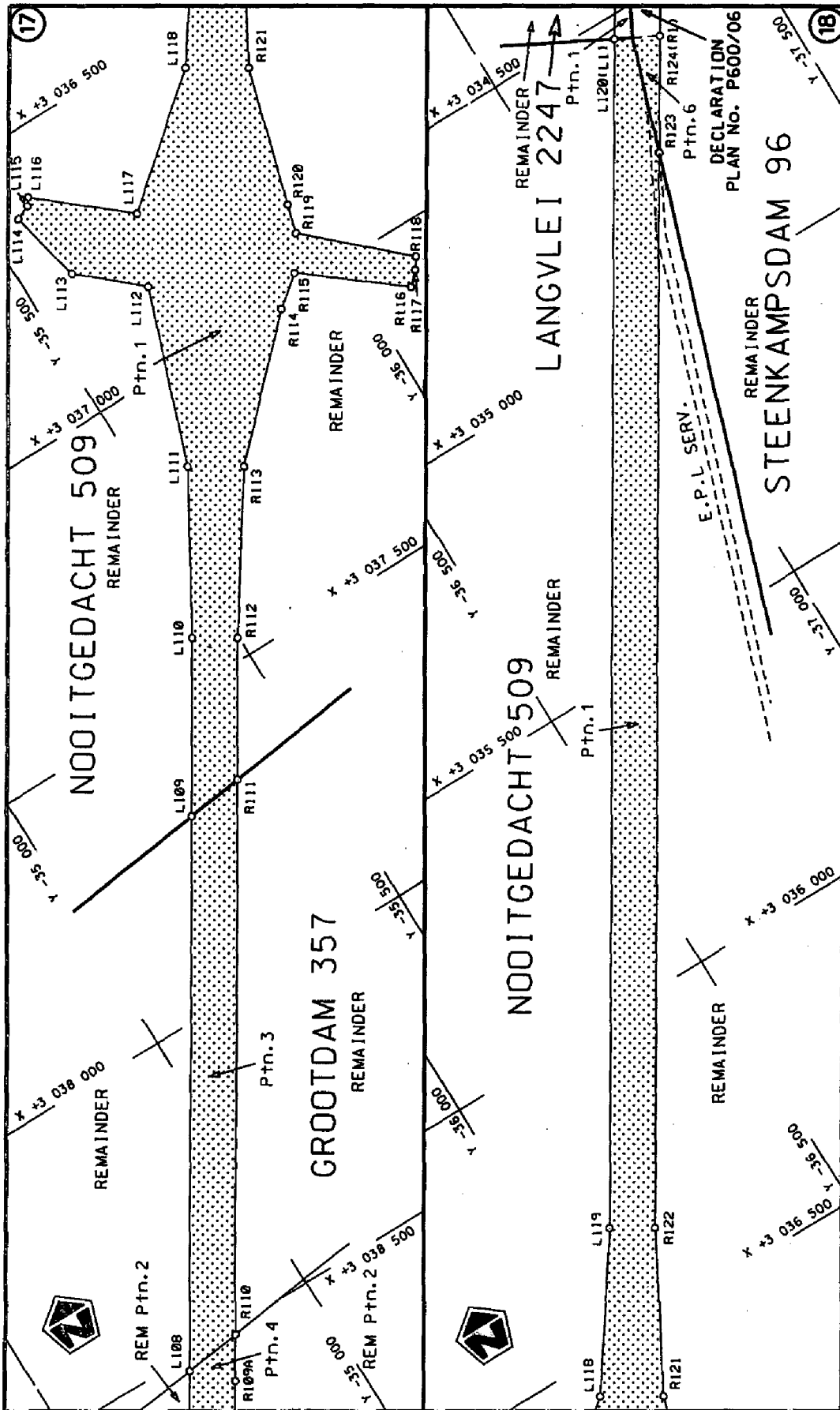
Podopedestak van die Republiek van Suid-Afrika
 Podopedestak van 'n ander staat
 Podopedestak van 'n ander land
 Podopedestak van 'n ander gebied

Plan P615707

Bladsy 8 van 13



<p>Die Suid Afrikaanse Nasionale Padogentskap Beperk The South African National Roads Agency Limited</p>	<p>Die figuur getoon The figure shown</p> 	<p>steldie podreserwe voor van 'n gedeelte represents the road reserve of a portion von Nasionale Roete of National Route</p> <p>N1 Seksie Section 17</p>	<p>Vel Sheet 9 van 13 Plan P615/07</p>
--	--	---	--



<p>Die Suid Afrikaanse Nasionale Padogentskap Beperk The South African National Roads Agency Limited</p>	<p>Die figuur wat hierin voorkom The figure shown</p>	<p>Die gedeelte van die grondreserwe of a portion van Nasionale Route N1 of National Route</p>	<p>Weg No. 10 Sheet 10 C&F 113 Plan No. P615707</p>
--	---	--	---

PAPRESERVE KOORDENATE / BOARD RESERVE CO-ORDINATES		PAPRESERVE CO-ORDINATES	
LINKERKANT/LEFT HAND SIDE		RECHTERKANT/RIGHT HAND SIDE	
Y	X	Y	X
330	214	382	065
325	216	391	065
350	225	405	065
254	843	422	064
206	861	468	064
64	878	500	064
62	878	527	064
19	769	587	064
22	769	621	064
32	618	621	064
37	618	674	064
55	571	674	064
64	571	685	063
80	197	695	063
88	101	720	063
98	079	720	063
150	099	737	063
163	099	757	063
171	40	771	063
177	40	771	063
180	20	771	063
182	20	771	063
183	20	771	063
185	20	771	063
187	20	771	063
189	20	771	063
190	20	771	063
191	20	771	063
192	20	771	063
193	20	771	063
194	20	771	063
195	20	771	063
196	20	771	063
197	20	771	063
198	20	771	063
199	20	771	063
200	20	771	063
201	20	771	063
202	20	771	063
203	20	771	063
204	20	771	063
205	20	771	063
206	20	771	063
207	20	771	063
208	20	771	063
209	20	771	063
210	20	771	063
211	20	771	063
212	20	771	063
213	20	771	063
214	20	771	063
215	20	771	063
216	20	771	063
217	20	771	063
218	20	771	063
219	20	771	063
220	20	771	063
221	20	771	063
222	20	771	063
223	20	771	063
224	20	771	063
225	20	771	063
226	20	771	063
227	20	771	063
228	20	771	063
229	20	771	063
230	20	771	063
231	20	771	063
232	20	771	063
233	20	771	063
234	20	771	063
235	20	771	063
236	20	771	063
237	20	771	063
238	20	771	063
239	20	771	063
240	20	771	063
241	20	771	063
242	20	771	063
243	20	771	063
244	20	771	063
245	20	771	063
246	20	771	063
247	20	771	063
248	20	771	063
249	20	771	063
250	20	771	063
251	20	771	063
252	20	771	063
253	20	771	063
254	20	771	063
255	20	771	063
256	20	771	063
257	20	771	063
258	20	771	063
259	20	771	063
260	20	771	063
261	20	771	063
262	20	771	063
263	20	771	063
264	20	771	063
265	20	771	063
266	20	771	063
267	20	771	063
268	20	771	063
269	20	771	063
270	20	771	063
271	20	771	063
272	20	771	063
273	20	771	063
274	20	771	063
275	20	771	063
276	20	771	063
277	20	771	063
278	20	771	063
279	20	771	063
280	20	771	063
281	20	771	063
282	20	771	063
283	20	771	063
284	20	771	063
285	20	771	063
286	20	771	063
287	20	771	063
288	20	771	063
289	20	771	063
290	20	771	063
291	20	771	063
292	20	771	063
293	20	771	063
294	20	771	063
295	20	771	063
296	20	771	063
297	20	771	063
298	20	771	063
299	20	771	063
300	20	771	063

PAARRESERVE KÖRDRINATRE

BOAN RESERVEB GO-ORDENANTYS

LINKERKANT/LEFTE HAND SIDE	y	x	WG	27°	y	x	RESTERKANT/RISBT HAND SIDE		
							y	x	*
L52	=24	397.230	058	R52	=24	454.450	059	328.490	
L53	=24	402.100	058	R53	=24	456.810	059	284.060	
L54	=24	407.410	058	R54	=24	455.370	059	260.530	
L55	=24	412.010	058	R55	=24	449.200	059	265.590	
L56	=24	423.350	058	R56	=24	463.640	058	517.710	
L57	=24	442.950	058	R57	=24	469.610	058	437.180	
L58	=24	473.420	058	R58	=24	482.340	058	357.390	
L59	=24	482.440	057	R59	=24	502.350	058	279.300	
L60	=24	765.280	057	R60	=24	529.240	058	204.070	
L61	=24	818.720	057	R61	=24	532.880	058	194.960	
L62	=24	830.490	057	R62	=24	756.070	057	637.340	
L63	=24	835.830	057	R63	=24	789.220	057	556.840	
L64	=24	835.340	057	R64	=24	890.480	057	315.770	
L65	=24	834.700	057	R65	=24	920.630	057	255.510	
L66	=24	827.430	057	R66	=24	958.030	057	197.670	
L67	=24	813.460	057	R67	=25	003.570	057	147.180	
L68	=24	993.480	056	R68	=25	057.160	057	103.670	
L69	=24	740.280	056	R69	=25	165.130	057	030.080	
L70	=24	782.980	056	R70	=25	236.060	056	982.060	
L71	=24	659.720	056	R71	=25	262.800	056	972.380	
L72	=24	886.020	056	R72	=25	288.160	056	917.220	
L73	=24	884.930	056	R73	=25	435.550	056	820.240	
L74	=24	884.940	056	R74	=25	442.880	056	800.760	
L75	=24	864.940	056	R75	=25	502.990	056	700.190	
L76	=24	581.180	056	R76	=25	522.770	056	650.880	
L77	=24	674.480	056	R77	=25	522.770	056	650.880	
L78	=24	742.630	056	R78	=25	522.770	056	650.880	
L79	=24	780.720	056	R79	=25	522.770	056	650.880	
L80	=24	886.480	056	R80	=25	522.770	056	650.880	
L81	=24	886.480	056	R81	=25	522.770	056	650.880	
L82	=24	886.480	056	R82	=25	522.770	056	650.880	
L83	=24	886.480	056	R83	=25	522.770	056	650.880	
L84	=24	886.480	056	R84	=25	522.770	056	650.880	
L85	=24	886.480	056	R85	=25	522.770	056	650.880	
L86	=24	886.480	056	R86	=25	522.770	056	650.880	
L87	=24	886.480	056	R87	=25	522.770	056	650.880	
L88	=24	886.480	056	R88	=25	522.770	056	650.880	
L89	=24	886.480	056	R89	=25	522.770	056	650.880	
L90	=24	886.480	056	R90	=25	522.770	056	650.880	
L91	=24	886.480	056	R91	=25	522.770	056	650.880	
L92	=24	886.480	056	R92	=25	522.770	056	650.880	
L93	=24	886.480	056	R93	=25	522.770	056	650.880	
L94	=24	886.480	056	R94	=25	522.770	056	650.880	
L95	=24	886.480	056	R95	=25	522.770	056	650.880	
L96	=24	886.480	056	R96	=25	522.770	056	650.880	
L97	=24	886.480	056	R97	=25	522.770	056	650.880	
L98	=24	886.480	056	R98	=25	522.770	056	650.880	
L99	=24	886.480	056	R99	=25	522.770	056	650.880	
L00	=24	886.480	056	R00	=25	522.770	056	650.880	

Vel	12	Van	13	P615/07
Sheet		off		

PADRESERWE KOÖRDINATE				ROAD RESERVE CO-ORDINATES			
LINKERKANT/LEFT HAND SIDE				REGTERKANT/RIGHT HAND SIDE			
	Y	X	WG 27°		Y	X	
L103	-30 595.940	3 045 195.220		R103	-31 283.230	3 044 241.150	
L104	-32 463.440	3 042 191.690		R104	-31 467.840	3 043 943.340	
L105	-32 956.660	3 041 398.300		R105	-31 780.830	3 043 440.880	
L106	-33 695.530	3 040 210.450		R106	-32 484.610	3 042 309.100	
L107	-34 190.680	3 039 413.730		R107	-33 062.020	3 041 380.750	
L108	-34 743.360	3 038 524.790		R108	-33 680.950	3 040 385.060	
L109	-35 263.120	3 037 688.950		R109	-34 291.170	3 039 403.510	
L110	-35 429.290	3 037 421.720		R110	-34 845.530	3 038 511.880	
L111	-35 579.860	3 037 162.340		R111	-35 365.260	3 037 676.400	
L112	-35 686.950	3 036 856.560		R112	-35 497.150	3 037 463.940	
L113	-35 585.480	3 036 766.700		R113	-35 664.180	3 037 214.350	
L114	-35 555.690	3 036 636.430		R114	-35 865.470	3 037 013.850	
L115	-35 580.680	3 036 625.350		R115	-35 917.890	3 036 971.860	
L116	-35 589.700	3 036 612.700		R116	-36 079.760	3 037 101.260	
L117	-35 737.550	3 036 737.750		R117	-36 102.030	3 037 079.330	
L118	-35 943.710	3 036 564.020		R118	-36 116.310	3 037 060.560	
L119	-36 115.540	3 036 317.820		R119	-35 957.030	3 036 914.630	
L120	-37 222.280	3 034 538.060		R120	-35 970.870	3 036 863.730	
				R121	-36 038.870	3 036 622.660	
				R122	-36 183.510	3 036 360.040	
				R123	-37 184.220	3 034 750.790	
				R124	-37 293.060	3 034 575.750	

Vel	13	Van	13	P615/07
Sheet		of		