

CONTENTS**INHOUD**

<i>No.</i>	<i>Page No.</i>	<i>Gazette No.</i>	<i>No.</i>	<i>Bladsy No.</i>	<i>Koerant No.</i>
GOVERNMENT NOTICE			GOEWERMENSKENNISGEWING		
Transport, Department of			Vervoer, Departement van		
<i>Government Notice</i>			<i>Goewermentskennisgewing</i>		
263			263		
South African National Roads Agency Limited and the National Roads Act (7/1998): The South African National Roads Agency Limited: Declaration amendment of National Road N2 Section 6X: Amendment of Declaration No. 1322 of 1989			Suid-Afrikaanse Nasionale Padagentskap Beperk en die Nasionale Paaie Wet (7/1998): Die Suid-Afrikaanse Nasionale Padagentskap Beperk: Verklaring wysiging van Nasionale Pad N2 Seksie 6X: Wysiging van Verklaring No. 1322 van 1989		
	3	30840		4	30840

GOVERNMENT NOTICE
GOEWERWENTSKENNISGEWING

DEPARTMENT OF TRANSPORT
DEPARTEMENT VAN VERVOER

No. 263

7 March 2008

THE SOUTH AFRICAN NATIONAL ROADS
AGENCY LIMITED

Registration No: 98/09584/06

Registration No: 98/09584/06

DECLARATION AMENDMENT OF NATIONAL ROAD N2 SECTION 6X**DECLARATION AMENDMENT OF NATIONAL ROAD N2 SECTION 6X****AMENDMENT OF DECLARATION NO. 1322 of 1989.**

By virtue of section 40 (1)(b) of the South African National Roads Agency Limited and the National Roads Act, 1998 (Act No. 7 of 1998), I hereby amend Declaration No. 1322 of 1989 as described in paragraph 2 of the Schedule by substituting the section of the descriptive declaration between its junction with route R323 in Riversdale and the Mosselbay west interchange, with the subjoined sheets 1 to 22 of plan P598/06 including only the roadway and shoulders (surfaced or gravel) but excluding kerbs, channels, sidewalks and parking areas through the township of Riversdale.

(National Road N2 Section 6X: Riversdale – Mossel Bay West Interchange)

J. Radtke

MINISTER OF TRANSPORT

No. 263

7 Maart 2008

**DIE SUID-AFRIKAANSE NASIONALE
PADAGENTSAP BEPERK**

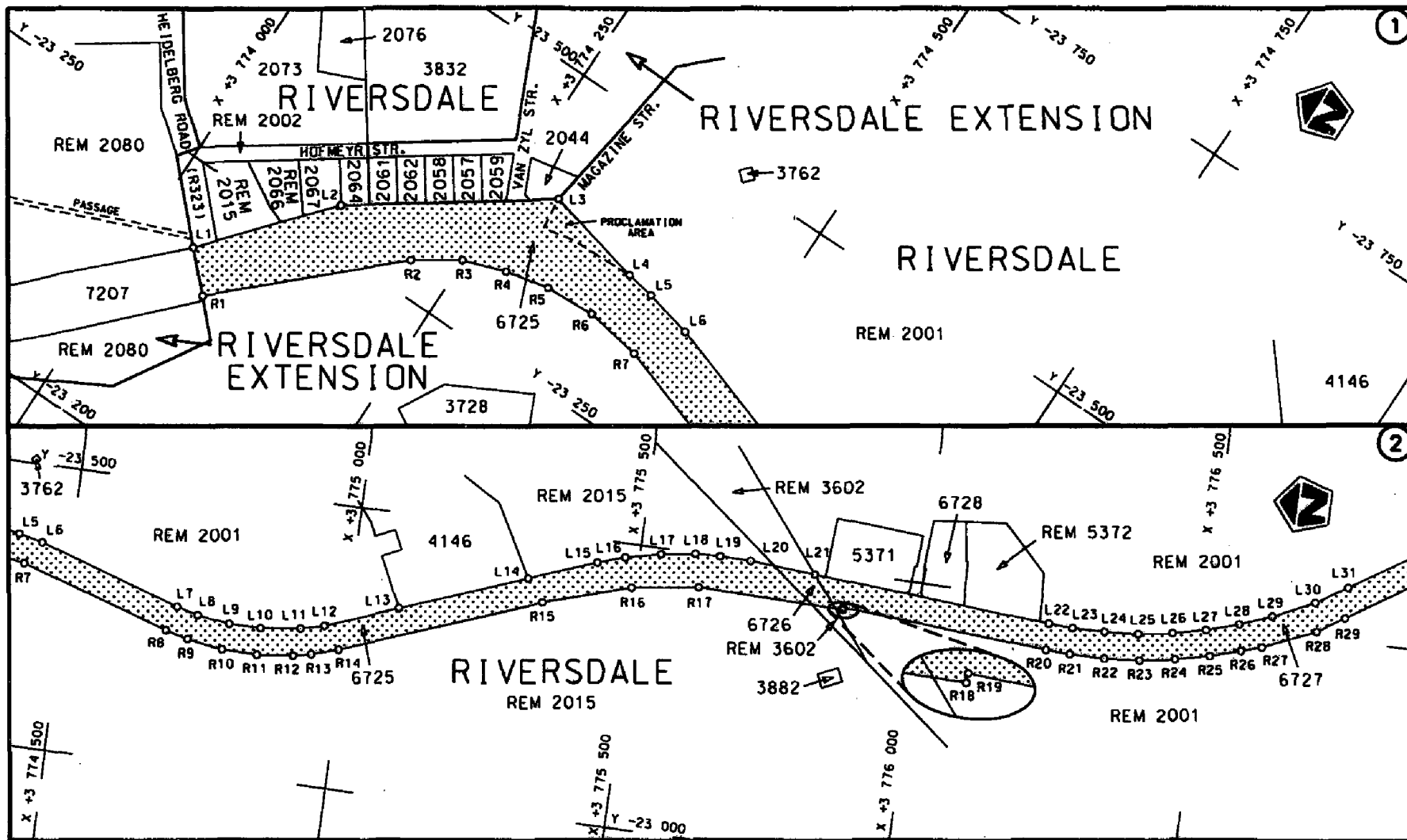
Registrasie No: 98/09584/06

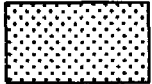
VERKLARING WYSIGING VAN NASIONALE PAD N2 SEKSIE 6X.**WYSIGING VAN VERKLARING NO. 1322 VAN 1989.**

Kragtens Artikel 40(1)(b) van die Suid-Afrikaanse Nasionale Padagentskap Beperk en die Nasionale Paaie Wet, 1998 (Wet No.7 van 1998), wysig ek hiermee Verklaring No. 1322 van 1989 paragraaf 2 van die Bylae deur die gedeelte van die beskrywende verklaring tussen die aansluiting met roete R323 in Riversdale en die Mosselbaai wes wisselaar, te vervang met meegaande velle 1 tot 22 van plan P598/06 insluitende slegs die padbaan en skouers (geplavei of grond), maar uitsluitende randstene, kanale, sypaadjies en parkeer areas deur die dorpsgronde van Riversdal.

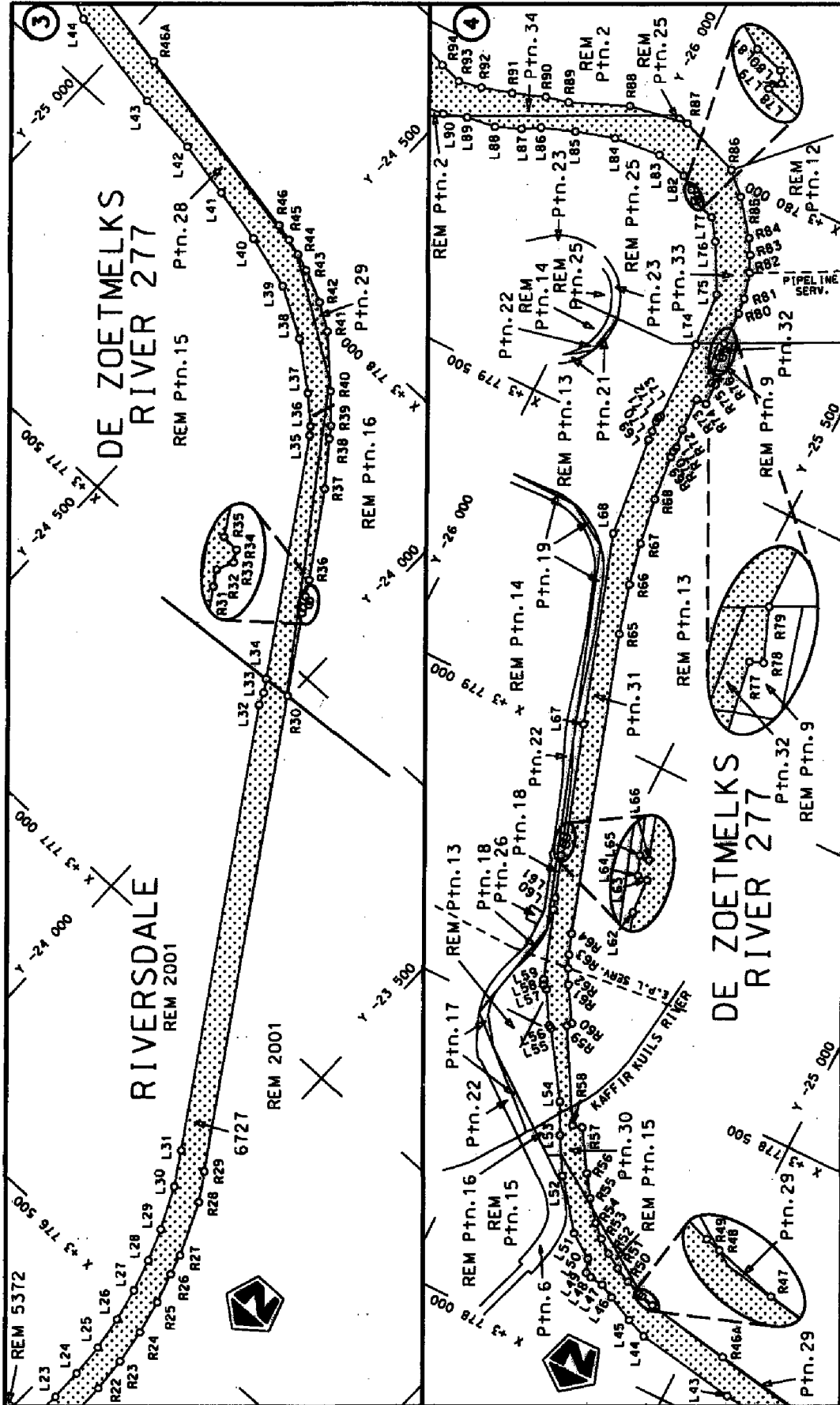
(Nasionale Pad N2 Seksie 6X: Riversdal – Mosselbaai Wes Wisselaar)


MINISTER VAN VERVOER



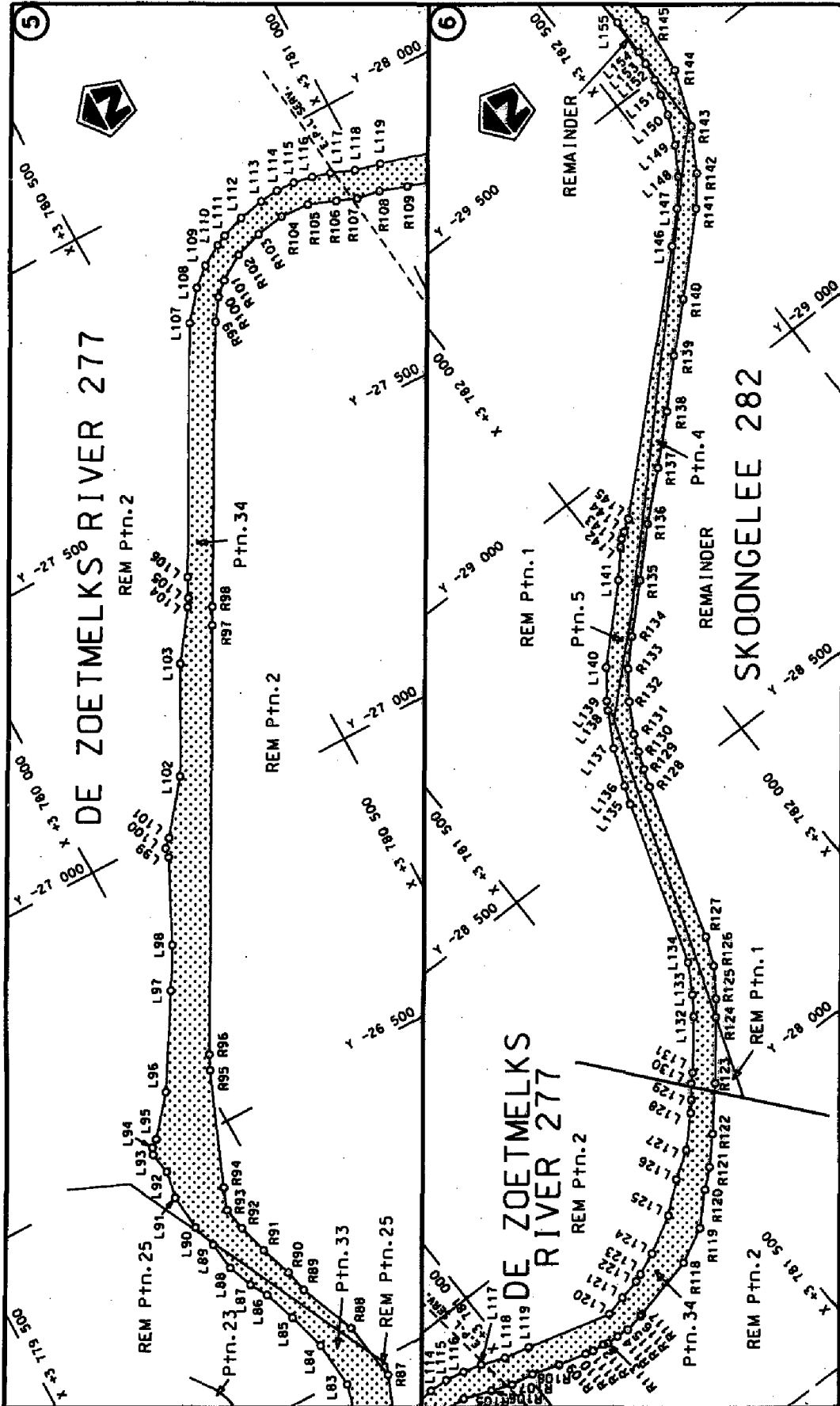
Die Suid Afrikaanse Nasionale Padogentskap Beperk The South African National Roads Agency Limited	Die figuur getoon The figure shown	 steldie pakkingsrewe voor van 'n gedeelte represents the road reserve of a portion van Nasionale Roete N2 Seksie 6X of Notional Route	Vel Sheet 1 van 22 Plan P598/06
--	---------------------------------------	--	------------------------------------

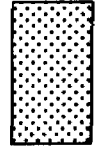
D.O.S.A



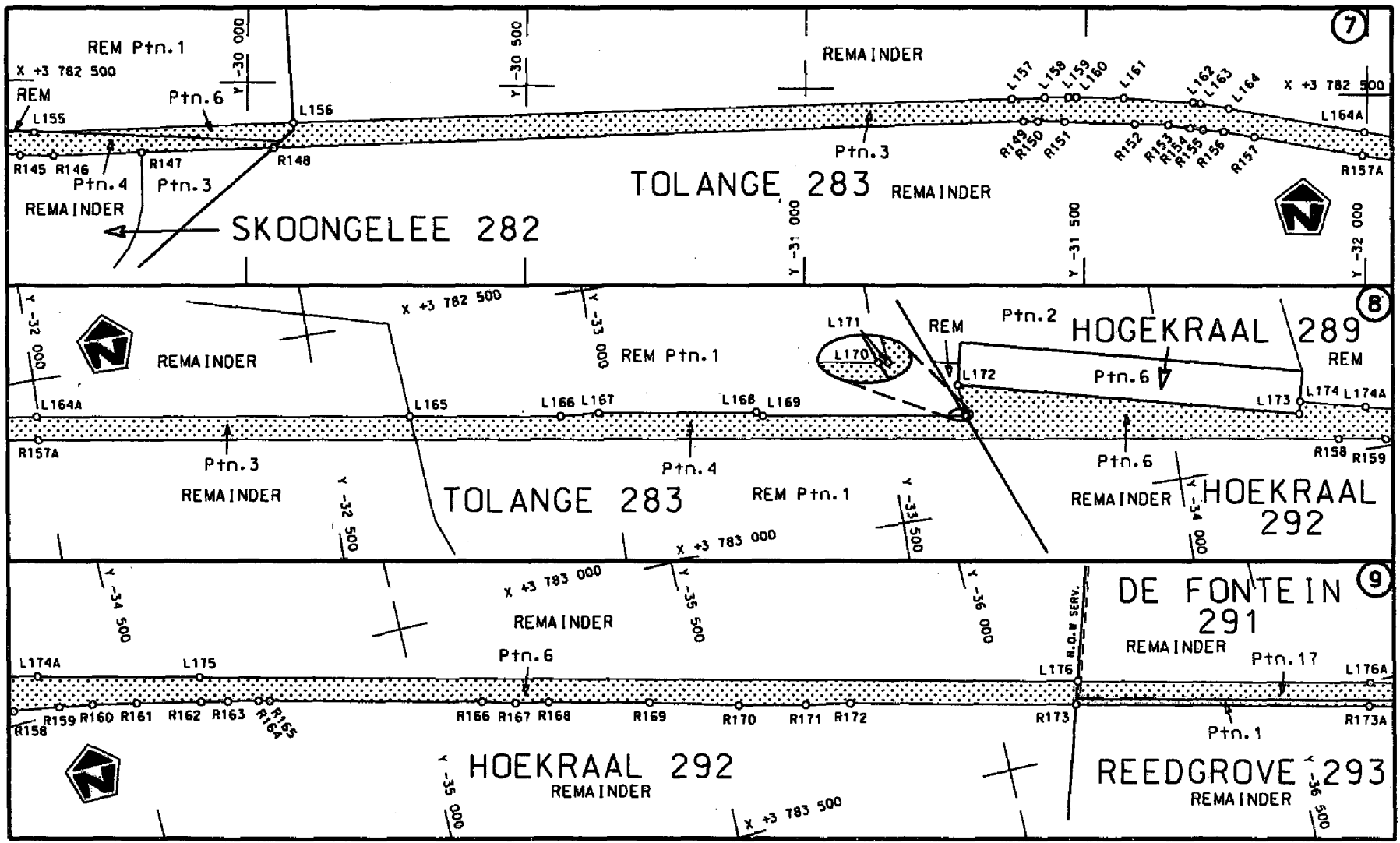
<p>Die Suid Afrikaanse Nasionale Padagentskap Beperk The South African National Roads Agency Limited</p>	<p>Die figuur getoon The figure shown</p>	<p>stelt die padreserwe voor van 'n gedeelte represents the road reserve of a portion van Nasionale Roete N2 of National Route</p>	<p>Vel Sheet 2 of 22</p> <p>Plan P598/06</p>
--	---	--	--

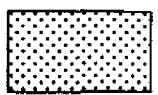
D.O.9.A



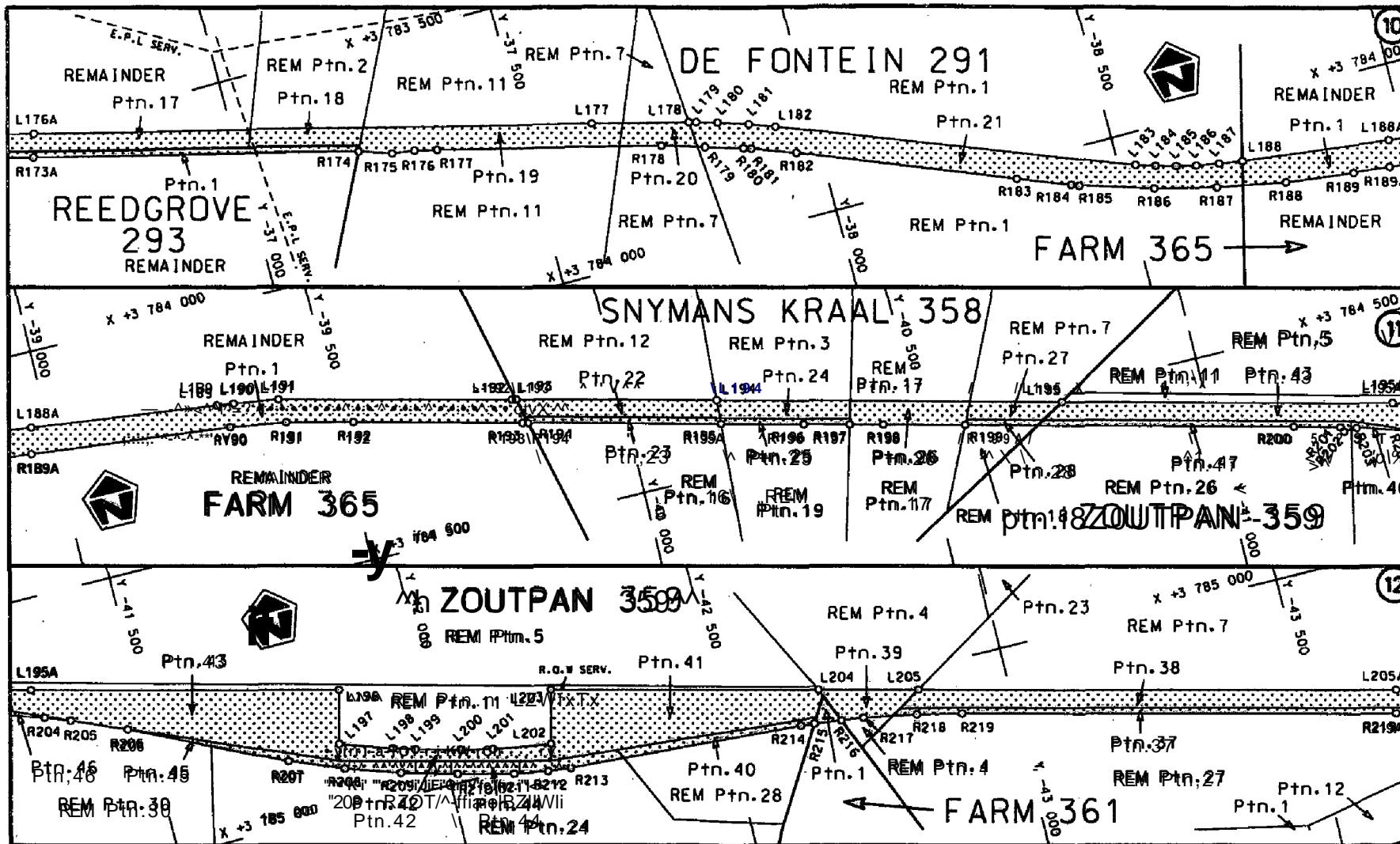
<p>Die Suid Afrikaanse Nasionale Padagentskap Beperk The South African National Roads Agency Limited</p>	<p>Die figuur getoon The figure shown</p> 	<p>stel die padreserwe voor van in gedeeltes represents the road reserve of 8 garlition van Nasionale Rotele. NE of National Roads. Station</p> <p>8X</p>	<p>Plan P598/08</p>
--	---	---	---------------------

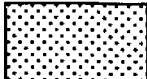
D.O.9.A



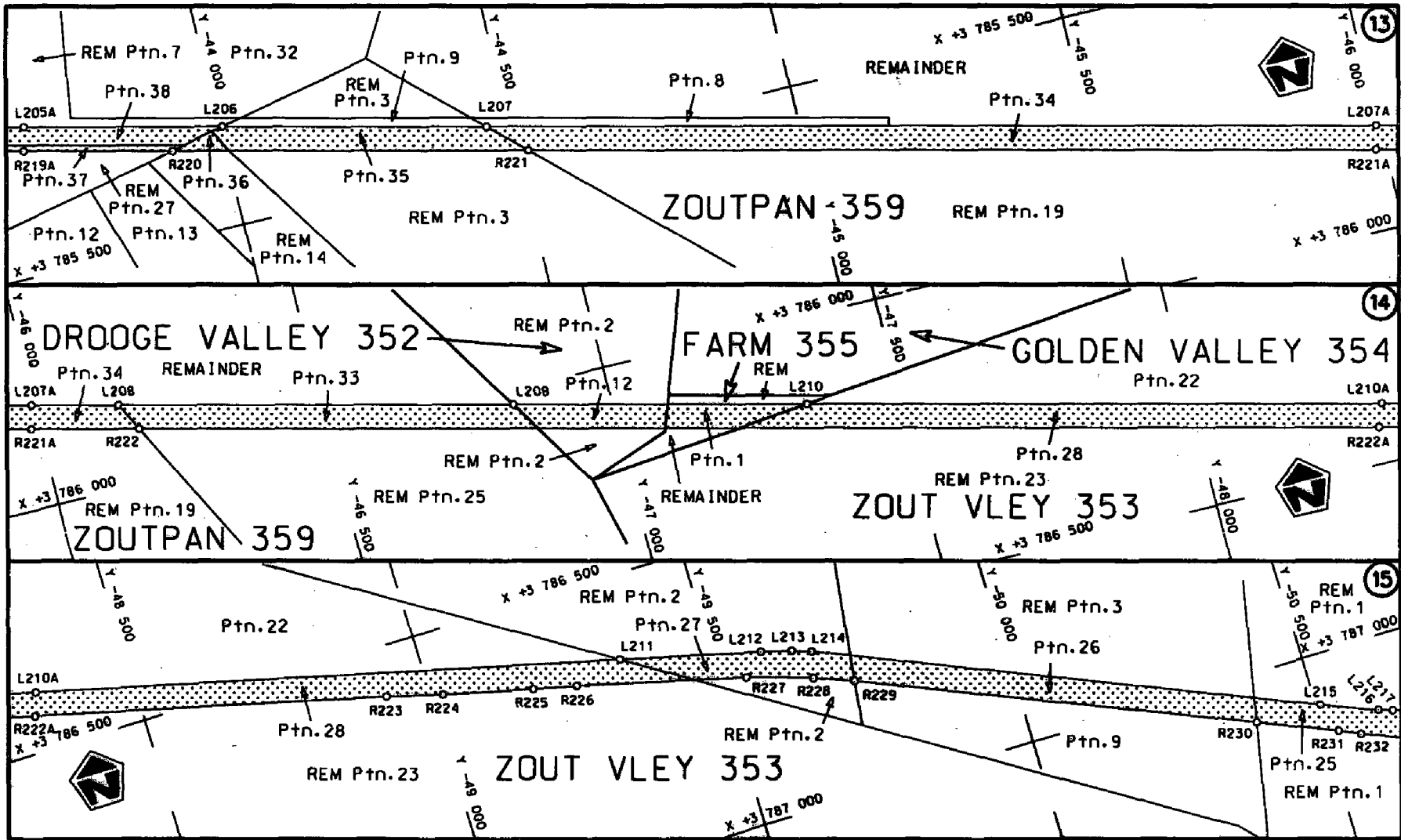
Die Suid Afrikaanse Nasionale Padogenskap Bepark	Die figuur getoon		steldie padreserwe voor van 'n gedeelte represents the road reserve of a portion von Nasionale Roete N2 Sektie of National Route Section	Vet Sheet 4 van of 22
The South African National Roads Agency Limited	The figure shown		6X	Riap P598/06

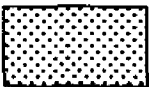
D.O.G.A

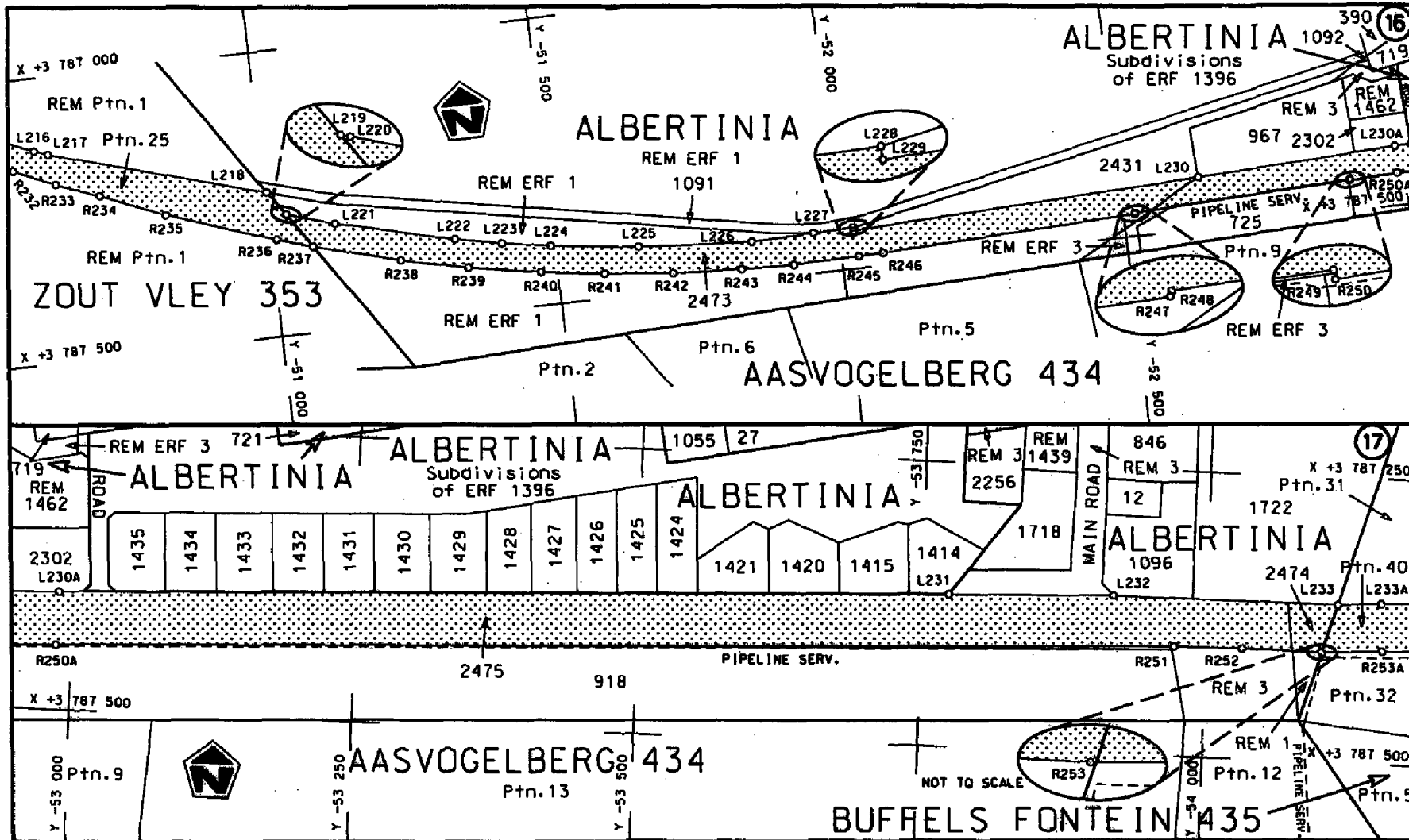


<p>Die Suid Afrikaanse Nasionale Padogenskap Beperk The South African National Roads Agency Limited</p>	<p>Die figuur getoon The figure shown</p> 	<p>stelsel padreserwe voor van 'n gedeelte represents the road reserve of a portion van Nasionale Roete N2 of National Route</p> <p>Seksie 6X</p>	<p>Vel Sheet 5 von of 22 Plan P598/06</p>
---	--	---	---

D.O.9.A

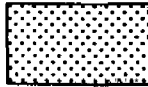


<p>Die Suid Afrikaanse Nasionale Padagentskap Beperk The South African National Roads Agency Limited</p>	<p>Die figuur getoon The figure shown</p> 	<p>stelt die padreserwe voor van 'n gedeelte represents the road reserve of a portion van Nasionale Roete of National Route</p> <p>N2 Seksie Section</p> <p>6X</p>	<p>Vel Sheet 6 van 22</p> <p>Plan P598/06</p>
--	---	---	---

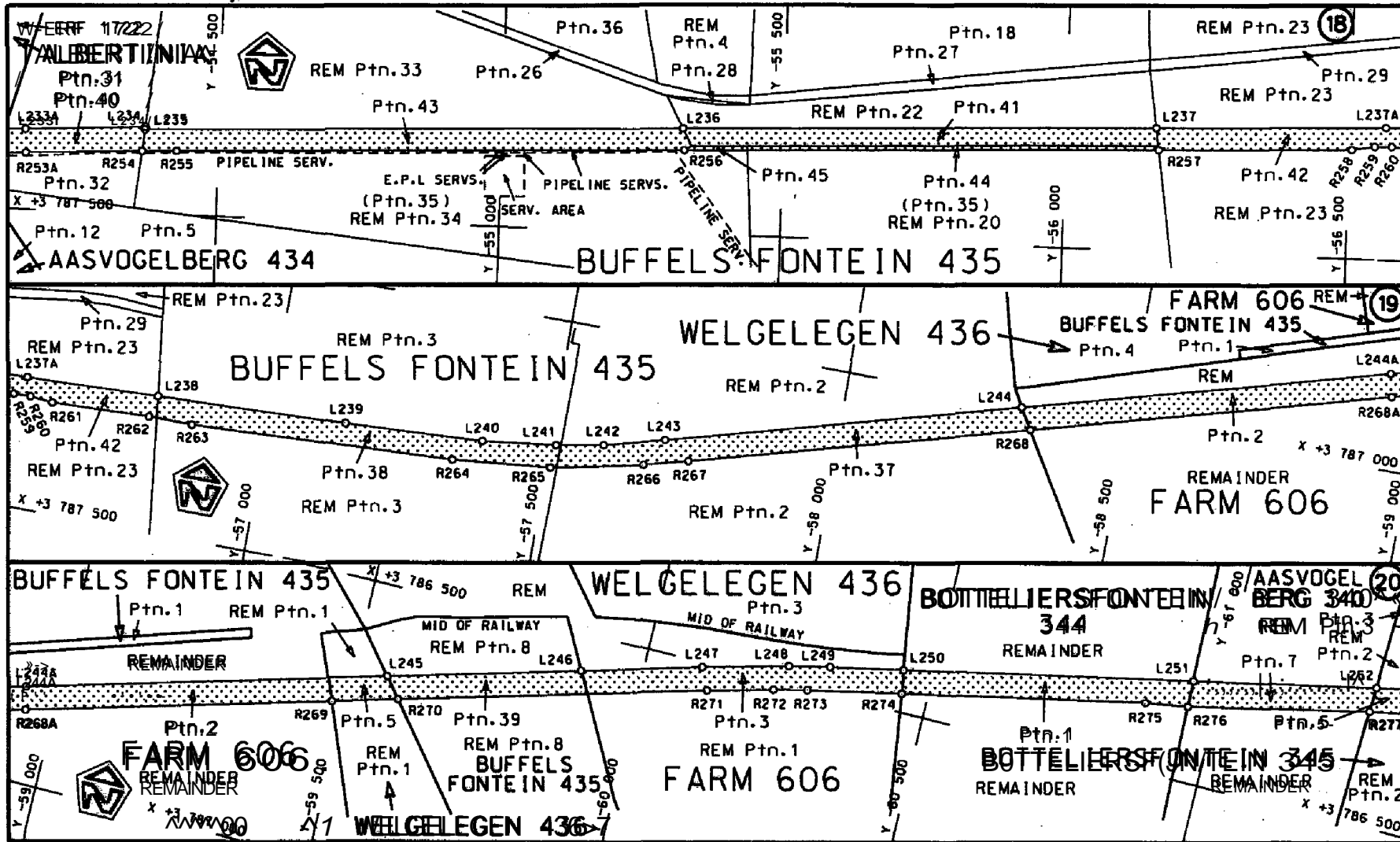


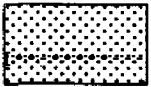
STAATSKOEFERANT, 7 MAART 2008

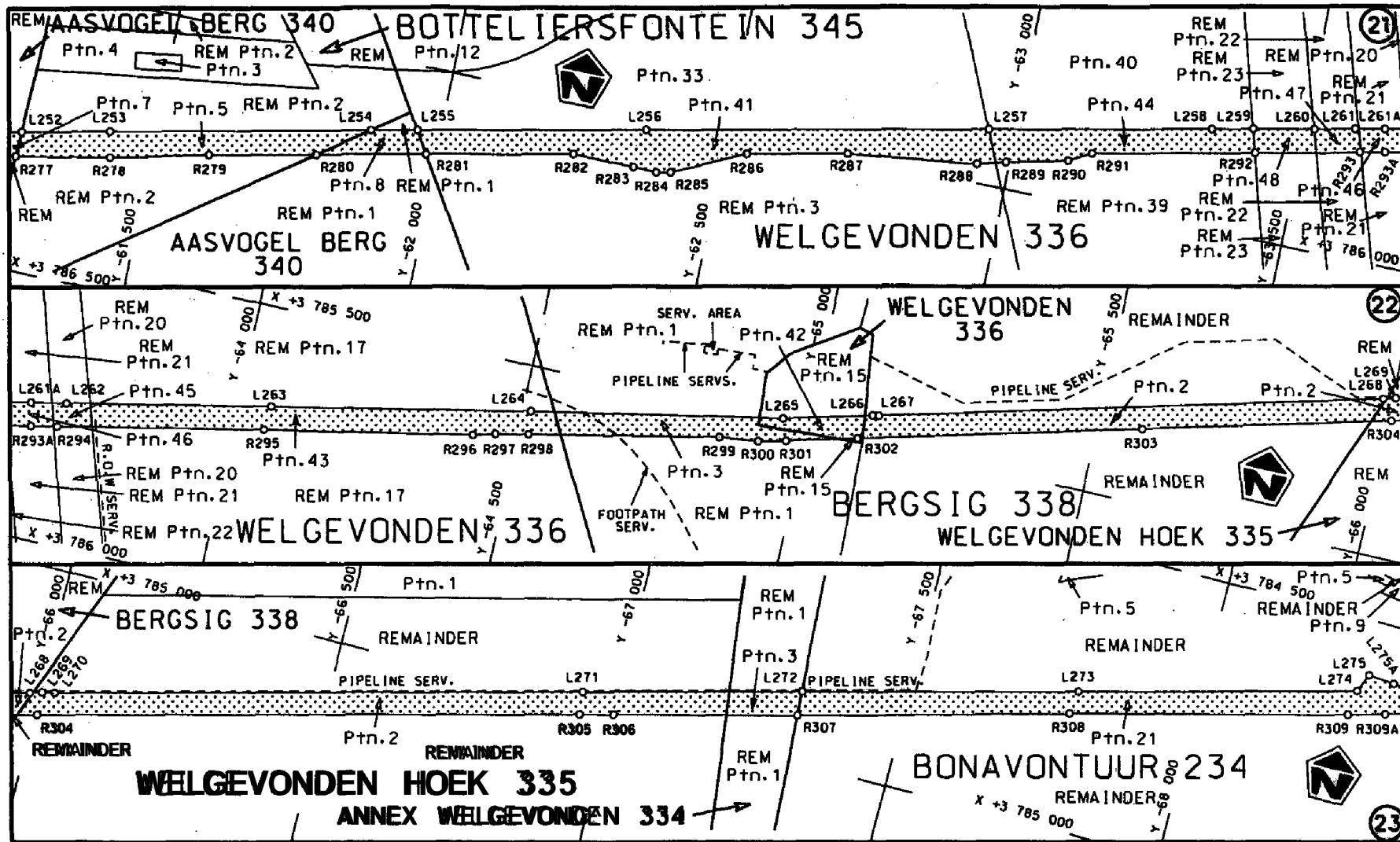
No. 30840 11

<p>Die Suid Afrikaanse Nasionale Padogenskop Bepark The South African National Roads Agency Limited</p>	<p>Die figuur getoon The figure shown</p> 	<p>steldie padreserwe voor van 'n gedeelte represents the road reserve of a portion van Nasionale Roete of National Route</p> <p>N2 Seksie 6X</p>	<p>Vel Sheet 7 van 22 Pton P598/06</p>
---	--	---	--

D.O.9.A

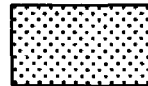


<p>Die Suid Afrikaanse Nasionale Padogenskop Beperk The South African National Roads Agency Limited</p>	<p>Die figuur getoon The figure shown</p>	 <p>stelt die padreserwe voor van 'n gedeelte represents the road reserve of a portion von Nasionale Roete of National Route</p> <p>N2 Seksie 6X</p>	<p>Vel Sheet 8 van 22 Blomp P598/06</p>
---	---	--	---

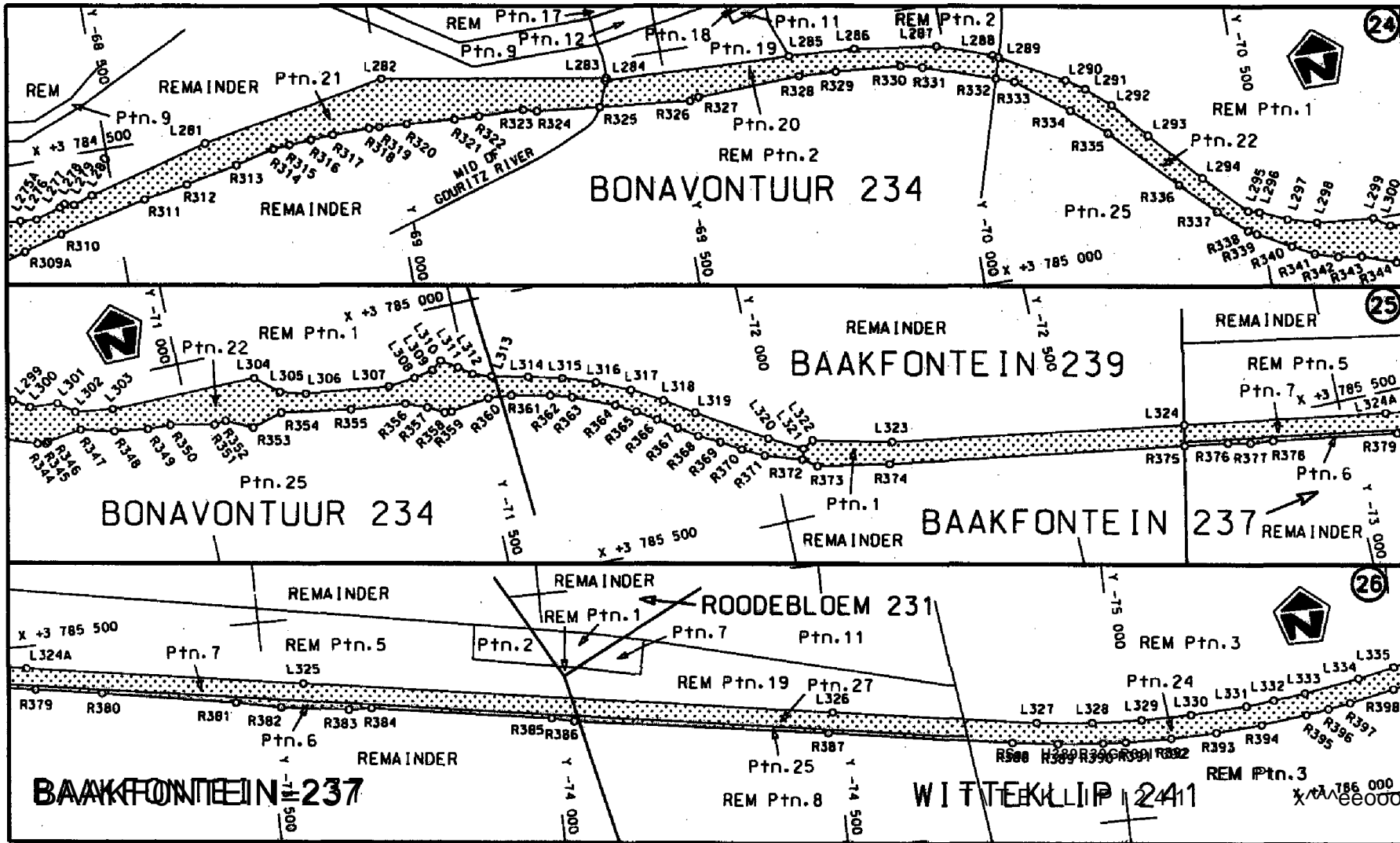


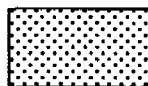
STAATSKOERANT, 7 MAART 2008

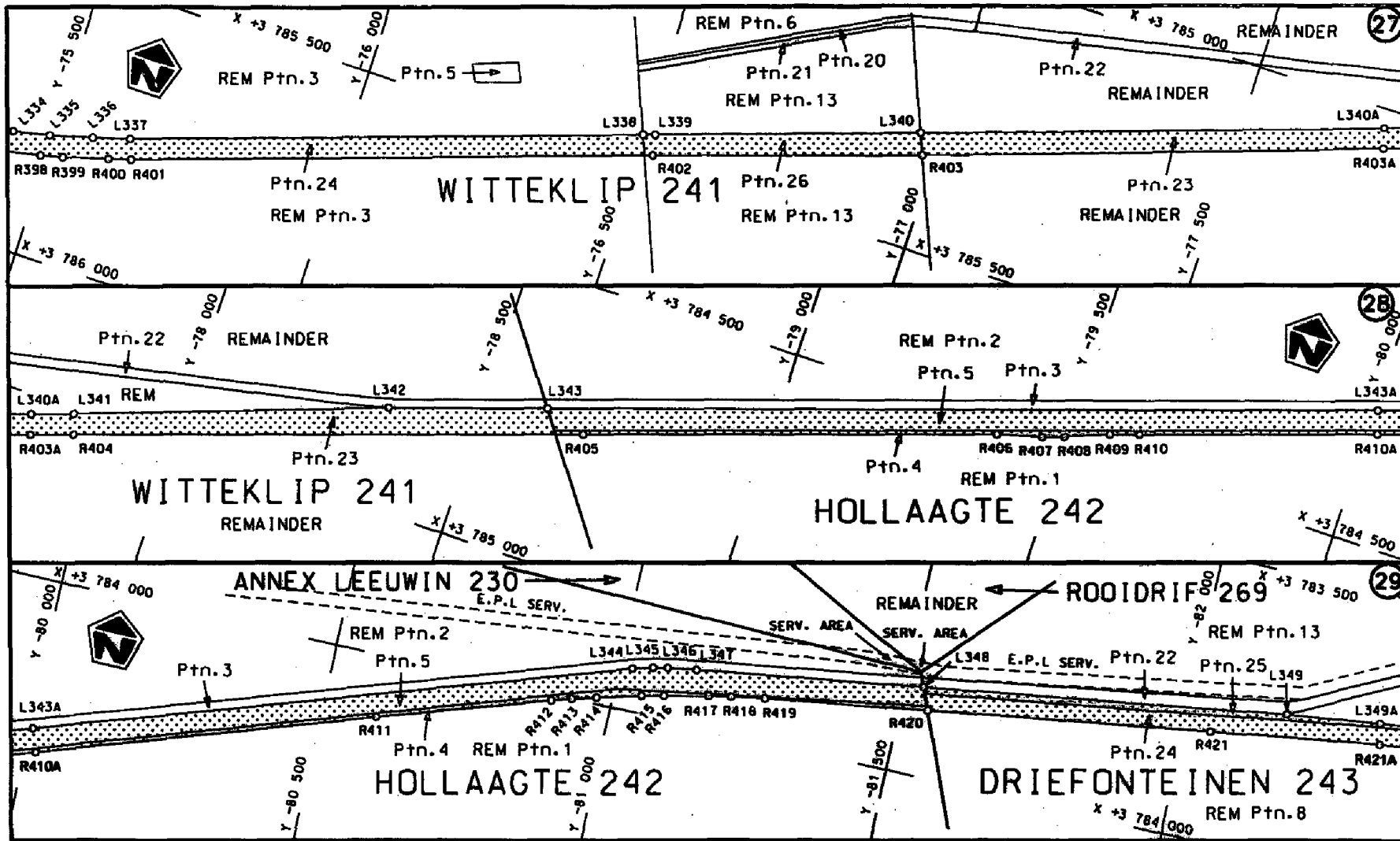
No. 30840 13

<p>Die Suid Afrikaanse Nasionale Podogentskdp Beperk The South African National Roads Agency Limited</p>	<p>Die figuur getoon The figure shown</p> 	<p>stelsel podreserve voor van 'n gedeelte represents the road reserve of a portion von Nasionale Roete 62 Saksie of National Route Section 6X</p>	<p>Vel Sheet 8 van 22 Plan P598/06</p>
--	--	--	--

D.O.S.A

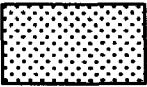


<p>Die Suid Afrikaanse Nasionale Padogentskap Beperk The South African National Roads Agency Limited</p>	<p>Die figuur getoon The figure shown</p> 	<p>stelsel padreserwe voor van 'n gedeelte represents the road reserve of a portion van Nasionale Roete K2 of National Route</p> <p>K2 Seksie Section 6X</p>	<p>Vel Sheet 10 of 22 Plan P598/06</p>
--	--	--	--

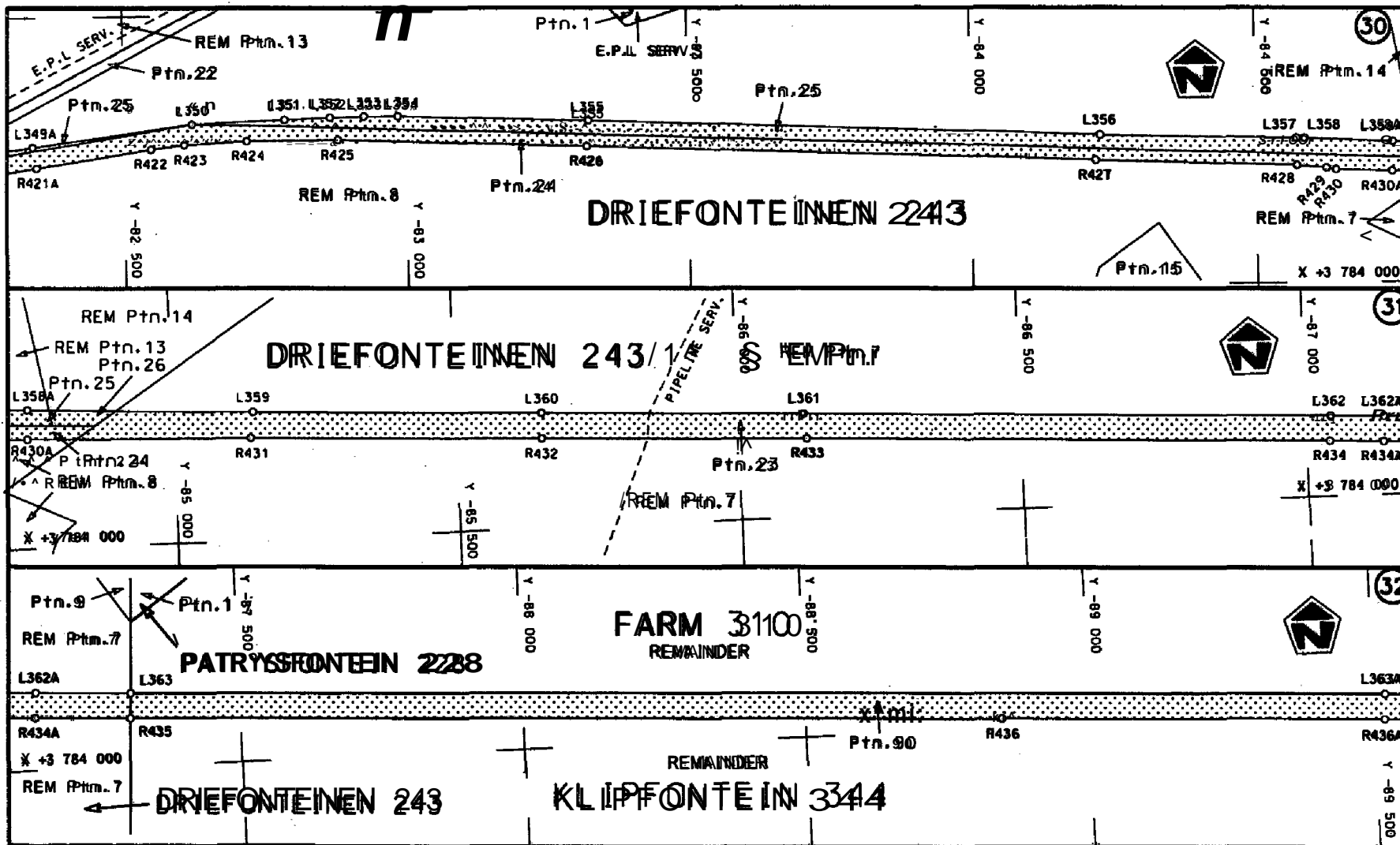


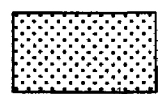
STAATSKOERANT, 7 MAART 2008

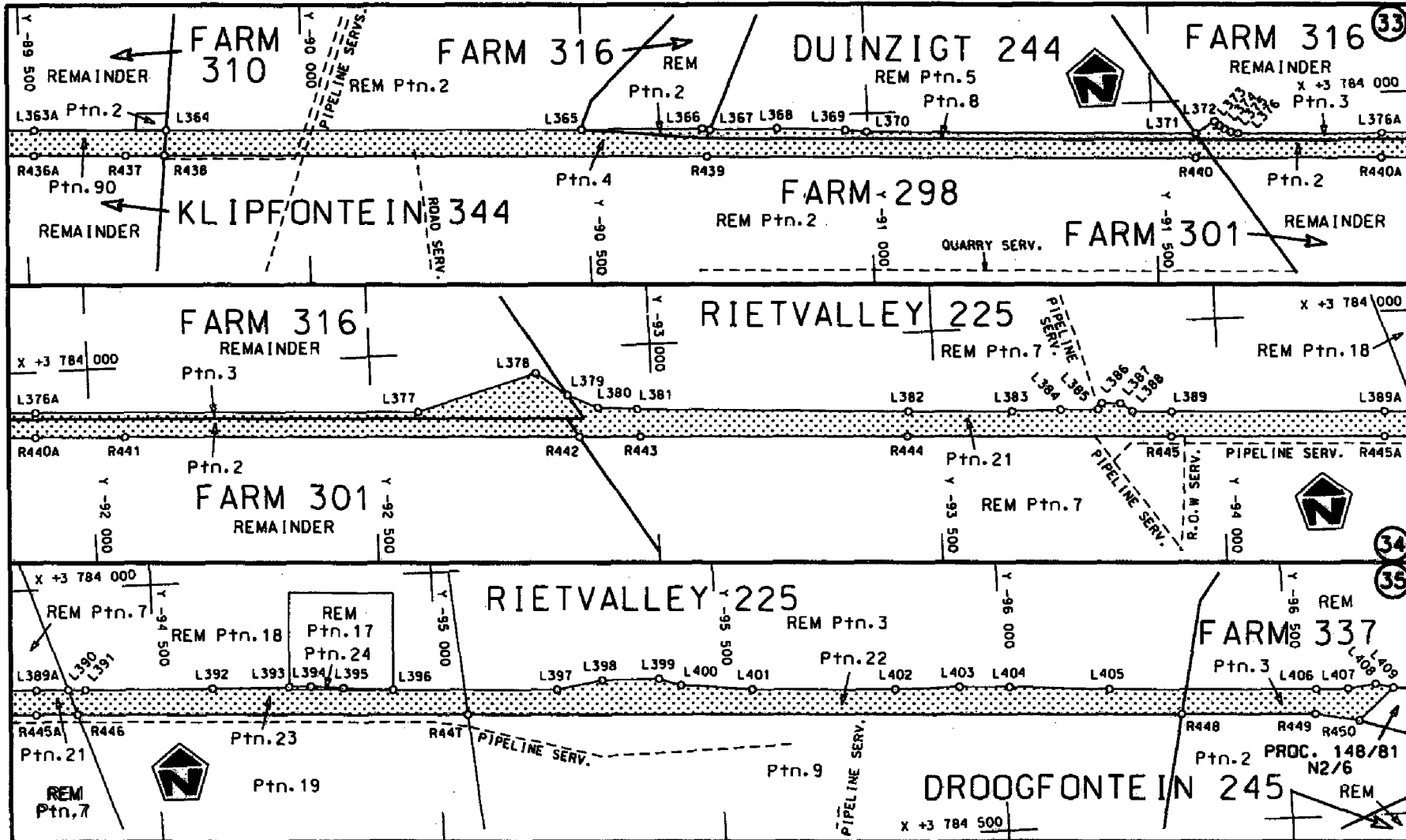
NO. 30840 15

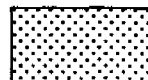
Dis Suid Afrikaanse Nasionale Padogenskap Beperk The South African National Roads Agency Limited	Die figuur getoon The figure shown		stel (die padreserwe vóór van 'n gedeelte represents the road reserve of a portion van Nasionale Roete of National Route	Vel Sheet 11 van 32 Plan P598/06
			N2 Seksie Section 6X	

D.O.9.A



<p>Die Suid Afrikaanse Nasionale Padagentskap Beperk The South African National Roads Agency Limited</p>	<p>Die figuur getoon The figure shown</p> 	<p>steldie podreserwe voor van 'n gedeelte represents the road reserve of a portion van Nasionale Rote of National Route</p> <p>N2° Sekse Section</p> <p>6X</p>	<p>Vol Sheet 12 of 22</p> <p>Plan P598/06</p>
--	--	---	---



<p>Die Suid Afrikaanse Nasionale Podogentskap Beperk The South African National Roads Agency Limited</p>	<p>Die figuur getoon The figure shown</p> 	<p>steeds podreserve voor van 'n gedeelte represents the road reserve of a portion van Nasionale Roete of National Route</p> <p>K2 Seksie Section</p> <p>6X</p>	<p>Vol Sheet 13 van of 22</p> <p>Plan P598/06</p>
--	--	---	--

D.O.G.A

PADRESERWE KOÖRDINATE				ROAD RESERVE CO-ORDINATES			
LINKERKANT/LEFT HAND SIDE				REGTERKANT/RIGHT HAND SIDE			
	Y	X	WG 21°		Y	X	
L1	-23 182,41	+3 774 044,45		R1	-23 151,27	+3 774 074,58	
L2	-23 286,19	+3 774 132,31		R2	-23 280,13	+3 774 211,33	
L3	-23 397,77	+3 774 290,65		R3	-23 305,59	+3 774 249,23	
L4	-23 376,20	+3 774 380,09		R4	-23 318,65	+3 774 287,34	
L5	-23 371,88	+3 774 405,40		R5	-23 326,76	+3 774 326,23	
L6	-23 362,27	+3 774 448,19		R6	-23 329,16	+3 774 370,85	
L7	-23 281,74	+3 774 698,32		R7	-23 321,24	+3 774 421,00	
L8	-23 272,01	+3 774 736,39		R8	-23 238,22	+3 774 684,07	
L9	-23 263,87	+3 774 793,93		R9	-23 227,76	+3 774 724,09	
L10	-23 263,81	+3 774 849,77		R10	-23 217,55	+3 774 787,41	
L11	-23 272,94	+3 774 919,83		R11	-23 216,67	+3 774 849,73	
L12	-23 283,82	+3 774 961,03		R12	-23 223,86	+3 774 913,03	
L13	-23 332,26	+3 775 088,91		R13	-23 230,95	+3 774 944,72	
L14	-23 415,45	+3 775 309,78		R14	-23 245,58	+3 774 991,65	
L15	-23 459,22	+3 775 427,44		R15	-23 376,40	+3 775 339,50	
L16	-23 474,84	+3 775 474,90		R16	-23 423,65	+3 775 492,97	
L17	-23 489,36	+3 775 537,12		R17	-23 440,08	+3 775 610,87	
L18	-23 497,73	+3 775 597,16		R18	-23 435,67	+3 775 865,83	
L19	-23 499,38	+3 775 641,00		R19	-23 439,48	+3 775 866,11	
L20	-23 498,62	+3 775 695,10		R20	-23 413,51	+3 776 229,08	
L21	-23 490,26	+3 775 810,21		R21	-23 411,84	+3 776 271,58	
L22	-23 459,90	+3 776 228,07		R22	-23 412,63	+3 776 332,54	
L23	-23 457,99	+3 776 270,27		R23	-23 417,72	+3 776 393,88	
L24	-23 459,10	+3 776 326,70		R24	-23 427,51	+3 776 455,82	
L25	-23 463,34	+3 776 385,77		R25	-23 441,26	+3 776 515,51	
L26	-23 472,45	+3 776 445,62		R26	-23 457,73	+3 776 568,29	
L27	-23 485,74	+3 776 503,12		R27	-23 468,38	+3 776 603,88	
L28	-23 503,32	+3 776 559,47		R28	-23 508,69	+3 776 695,05	
L29	-23 524,75	+3 776 614,98		R29	-23 538,19	+3 776 741,61	
L30	-23 558,81	+3 776 686,13		R30	-24 004,03	+3 777 454,93	
L31	-24 592,37	+3 776 741,44		R31	-24 085,39	+3 777 579,51	
L32	-24 029,36	+3 777 409,41		R32	-24 090,74	+3 777 588,06	
L33	-24 038,23	+3 777 430,69		R33	-24 086,52	+3 777 597,99	
L34	-24 051,82	+3 777 451,53		R34	-24 090,29	+3 777 604,45	
L35	-24 290,65	+3 777 817,84		R35	-24 100,86	+3 777 605,10	
L36	-24 300,57	+3 777 830,81		R36	-24 116,37	+3 777 630,81	
L37	-24 344,08	+3 777 870,43		R37	-24 206,68	+3 777 767,13	
L38	-24 420,32	+3 777 930,56		R38	-24 260,97	+3 777 837,18	
L39	-24 504,71	+3 777 977,98		R39	-24 274,33	+3 777 855,11	
L40	-24 597,87	+3 778 005,42		R40	-24 317,16	+3 777 900,11	
L41	-24 694,03	+3 778 026,31		R41	-24 393,05	+3 777 973,11	
L42	-24 792,35	+3 778 045,20		R42	-24 438,15	+3 778 001,11	
L43	-24 899,03	+3 778 056,61		R43	-24 492,83	+3 778 027,11	
L44	-25 078,71	+3 778 087,30		R44	-24 522,21	+3 778 037,11	
L45	-25 114,64	+3 778 101,45		R45	-24 551,36	+3 778 045,11	
L46	-25 159,82	+3 778 123,67		R46	-24 581,43	+3 778 052,11	
L47	-25 185,07	+3 778 136,49		R47	-25 089,60	+3 778 142,11	
L48	-25 208,62	+3 778 139,72		R48	-25 113,14	+3 778 149,11	
L49	-25 219,54	+3 778 143,77		R49	-25 118,87	+3 778 151,11	
L50	-25 227,87	+3 778 167,07		R50	-25 146,93	+3 778 161,11	
L51	-25 269,93	+3 778 197,65		R51	-25 173,41	+3 778 174,11	

Vel 14 Van 22 P598/06
Sheet of

PADRESERWE KOÖRDINATE				ROAD RESERVE CO-ORDINATES			
LINKERKANT/LEFT HAND SIDE				REGTERKANT/RIGHT HAND SIDE			
	Y	X	WG 21 ^o		Y	X	
L52	-25 332,,93	+3 778 279,56	R52	-25 199,47	+3 778 191,40		
L53	-25 368,,07	+3 778 341,51	R53	-25 222,74	+3 778 209,43		
L54	-25 394,,79	+3 778 394,05	R54	-25 244,57	+3 778 230,30		
L55	-25 467,,05	+3 778 503,56	R55	-25 272,46	+3 778 265,28		
L56	-25 471,,42	+3 778 506,18	R56	-25 296,44	+3 778 302,30		
L57	-25 504,,86	+3 778 561,88	R57	-25 339,55	+3 778 370,95		
L58	-25 512,,41	+3 778 566,52	R58	-25 356,18	+3 778 366,83		
L59	-25 516,,57	+3 778 575,27	R59	-25 444,37	+3 778 519,59		
L60	-25 556,,30	+3 778 692,74	R60	-25 438,09	+3 778 527,62		
L61	-25 562,,91	+3 778 712,37	R61	-25 474,15	+3 778 585,93		
L62	-25 587,62	+3 778 785,04	R62	-25 487,61	+3 778 611,79		
L63	-25 588,48	+3 778 803,74	R63	-25 496,95	+3 778 633,53		
L64	-25 594,76	+3 778 805,82	R64	-25 509,05	+3 778 668,55		
L65	-25 598,96	+3 778 817,11	R65	-25 672,22	+3 779 180,31		
L66	-25 593,29	+3 778 819,40	R66	-25 695,36	+3 779 266,82		
L67	-25 656,60	+3 779 009,72	R67	-25 710,79	+3 779 340,01		
L68	-25 762,07	+3 779 335,04	R68	-25 723,65	+3 779 421,23		
L69	-25 780,80	+3 779 509,80	R69	-25 731,91	+3 779 500,16		
L70	-25 782,00	+3 779 526,39	R70	-25 732,57	+3 779 511,34		
L71	-25 783,43	+3 779 545,01	R71	-25 730,41	+3 779 519,38		
L72	-25 783,32	+3 779 552,07	R72	-25 735,25	+3 779 552,03		
L73	-25 780,27	+3 779 556,40	R73	-25 736,30	+3 779 611,19		
L74	-25 781,53	+3 779 697,00	R74	-25 718,27	+3 779 611,29		
L75	-25 788,22	+3 779 792,18	R75	-25 718,51	+3 779 649,49		
L76	-25 831,18	+3 779 874,83	R76	-25 726,36	+3 779 648,98		
L77	-25 855,86	+3 779 910,07	R77	-25 734,27	+3 779 695,91		
L78	-25 896,57	+3 779 922,29	R78	-25 728,52	+3 779 698,26		
L79	-25 892,04	+3 779 927,41	R79	-25 737,52	+3 779 721,57		
L80	-25 895,44	+3 779 933,08	R80	-25 738,41	+3 779 779,05		
L81	-25 909,99	+3 779 937,34	R81	-25 741,46	+3 779 806,86		
L82	-25 933,23	+3 779 953,21	R82	-25 753,26	+3 779 852,26		
L83	-25 987,77	+3 779 966,56	R83	-25 765,60	+3 779 880,54		
L84	-26 071,12	+3 779 958,13	R84	-25 780,51	+3 779 906,34		
L85	-26 138,22	+3 779 938,00	R85	-25 826,62	+3 779 964,60		
L86	-26 195,00	+3 779 917,52	R86	-25 862,17	+3 779 999,32		
L87	-26 224,44	+3 779 900,31	R87	-25 968,67	+3 780 037,78		
L88	-26 267,84	+3 779 883,16	R88	-26 072,73	+3 780 020,24		
L89	-26 318,38	+3 779 876,65	R89	-26 171,94	+3 779 978,44		
L90	-26 358,71	+3 779 863,60	R90	-26 211,76	+3 779 969,67		
L91	-26 422,14	+3 779 857,42	R91	-26 267,19	+3 779 949,80		
L92	-26 470,07	+3 779 865,06	R92	-26 319,88	+3 779 934,66		
L93	-26 507,69	+3 779 858,23	R93	-26 360,50	+3 779 927,05		
L94	-26 519,34	+3 779 863,24	R94	-26 399,07	+3 779 940,23		
L95	-26 529,03	+3 779 875,77	R95	-26 593,54	+3 780 016,52		
L96	-26 595,19	+3 779 930,49	R96	-26 618,83	+3 780 028,63		
L97	-26 749,60	+3 780 022,90	R97	-27 286,91	+3 780 391,24		
L98	-26 820,17	+3 780 062,13	R98	-27 316,16	+3 780 407,01		
L99	-26 961,00	+3 780 130,65	R99	-27 757,27	+3 780 646,53		
L100	-26 977,27	+3 780 133,59	R100	-27 793,53	+3 780 671,62		
L101	-26 990,44	+3 780 147,20	R101	-27 814,50	+3 780 694,48		
L102	-27 076,64	+3 780 215,86	R102	-27 842,06	+3 780 737,34		

Vel 15 Van 22 P598/06
 Sheet of

PADRESERWE KOÖRDINATE				ROAD RESERVE CO-ORDINATES			
LINKERKANT/LEFT HAND SIDE				REGTERKANT/RIGHT HAND SIDE			
	Y	X	WG 21°		Y	X	
L103	-27 252,96	+3 780 310,19		R103	-27 857,63	+3 780 785,87	
L104	-27 334,86	+3 780 368,51		R104	-27 865,79	+3 780 835,99	
L105	-27 348,22	+3 780 377,13		R105	-27 862,45	+3 780 886,63	
L106	-27 381,65	+3 780 393,42		R106	-27 843,85	+3 780 933,70	
L107	-27 775,81	+3 780 605,23		R107	-27 830,08	+3 780 968,60	
L108	-27 824,88	+3 780 645,65		R108	-27 822,74	+3 781 008,70	
L109	-27 852,49	+3 780 677,19		R109	-27 806,38	+3 781 055,40	
L110	-27 874,63	+3 780 712,96		R110	-27 793,36	+3 781 104,70	
L111	-27 883,48	+3 780 732,43		R111	-27 789,19	+3 781 117,65	
L112	-27 897,70	+3 780 772,09		R112	-27 786,66	+3 781 139,03	
L113	-27 906,19	+3 780 816,82		R113	-27 783,66	+3 781 147,04	
L114	-27 909,12	+3 780 850,13		R114	-27 782,53	+3 781 167,82	
L115	-27 907,58	+3 780 882,88		R115	-27 781,90	+3 781 189,72	
L116	-27 900,71	+3 780 916,16		R116	-27 786,80	+3 781 221,51	
L117	-27 891,72	+3 780 948,08		R117	-27 787,79	+3 781 225,08	
L118	-27 875,51	+3 780 988,25		R118	-27 814,33	+3 781 339,34	
L119	-27 864,46	+3 781 032,56		R119	-27 844,79	+3 781 400,14	
L120	-27 822,78	+3 781 180,21		R120	-27 893,49	+3 781 448,16	
L121	-27 831,25	+3 781 216,42		R121	-27 920,17	+3 781 478,92	
L122	-27 839,95	+3 781 253,90		R122	-27 962,77	+3 781 519,47	
L123	-27 845,07	+3 781 267,36		R123	-28 031,10	+3 781 578,05	
L124	-27 861,26	+3 781 305,89		R124	-28 123,20	+3 781 651,32	
L125	-27 896,78	+3 781 370,05		R125	-28 148,58	+3 781 671,51	
L126	-27 939,53	+3 781 419,76		R126	-28 197,68	+3 781 703,31	
L127	-27 968,84	+3 781 465,17		R127	-28 247,07	+3 781 724,11	
L128	-28 016,02	+3 781 512,16		R128	-28 516,62	+3 781 810,12	
L129	-28 033,63	+3 781 527,56		R129	-28 547,68	+3 781 820,54	
L130	-28 056,59	+3 781 544,90		R130	-28 578,57	+3 781 832,58	
L131	-28 070,52	+3 781 559,03		R131	-28 608,05	+3 781 845,58	
L132	-28 147,73	+3 781 621,60		R132	-28 658,50	+3 781 874,67	
L133	-28 179,82	+3 781 643,48		R133	-28 705,57	+3 781 908,75	
L134	-28 230,75	+3 781 671,74		R134	-28 746,62	+3 781 948,83	
L135	-28 513,39	+3 781 764,72		R135	-28 815,90	+3 782 021,12	
L136	-28 544,01	+3 781 776,34		R136	-28 886,79	+3 782 091,98	
L137	-28 609,29	+3 781 801,18		R137	-28 953,38	+3 782 166,86	
L138	-28 668,82	+3 781 835,13		R138	-29 022,10	+3 782 239,97	
L139	-28 683,11	+3 781 843,69		R139	-29 092,39	+3 782 310,28	
L140	-28 731,03	+3 781 879,28		R140	-29 161,11	+3 782 383,09	
L141	-28 838,58	+3 781 991,44		R141	-29 272,94	+3 782 499,35	
L142	-28 883,17	+3 782 029,37		R142	-29 320,63	+3 782 538,66	
L143	-28 893,21	+3 782 039,17		R143	-29 391,80	+3 782 580,72	
L144	-28 900,29	+3 782 050,70		R144	-29 488,34	+3 782 618,66	
L145	-28 914,06	+3 782 070,94		R145	-29 590,12	+3 782 631,49	
L146	-29 246,67	+3 782 425,31		R146	-29 651,54	+3 782 631,48	
L147	-29 293,54	+3 782 473,06		R147	-29 810,17	+3 782 623,83	
L148	-29 336,14	+3 782 508,88		R148	-30 047,41	+3 782 613,04	
L149	-29 383,15	+3 782 538,61		R149	-31 389,84	+3 782 552,42	
L150	-29 433,64	+3 782 560,63		R150	-31 415,50	+3 782 552,21	
L151	-29 469,39	+3 782 572,61		R151	-31 462,89	+3 782 552,79	
L152	-29 496,29	+3 782 580,71		R152	-31 587,84	+3 782 555,47	
L153	-29 529,13	+3 782 585,76		R153	-31 647,53	+3 782 555,83	

Vel 16
Sheet

Van 22
of

P598/06

PADRESERVE KOÖRDINATE				ROAD RESERVE CO-ORDINATES			
LINKERKANT/LEFT HAND SIDE				REGTERKANT/RIGHT HAND SIDE			
	Y	X	WG 21°		Y	X	
L154	-29 552,60	+3 782 589,37		R154	-31 686,62	+3 782 562,14	
L155	-29 615,84	+3 782 590,60		R155	-31 709,27	+3 782 564,49	
L156	-30 082,29	+3 782 568,79		R156	-31 745,77	+3 782 567,05	
L157	-31 368,64	+3 782 513,06		R157	-31 800,05	+3 782 575,26	
L158	-31 426,96	+3 782 510,72		R158	-34 289,71	+3 782 974,34	
L159	-31 469,24	+3 782 509,53		R159	-34 372,36	+3 782 987,65	
L160	-31 483,20	+3 782 509,37		R160	-34 431,23	+3 782 997,74	
L161	-31 567,30	+3 782 510,16		R161	-34 509,28	+3 783 014,16	
L162	-31 690,52	+3 782 516,64		R162	-34 622,95	+3 783 039,69	
L163	-31 704,16	+3 782 517,92		R163	-34 670,51	+3 783 050,06	
L164	-31 754,24	+3 782 526,08		R164	-34 723,07	+3 783 062,33	
L165	-32 659,22	+3 782 671,33		R165	-34 742,76	+3 783 067,12	
L166	-32 925,85	+3 782 714,13		R166	-35 111,35	+3 783 158,71	
L167	-32 993,79	+3 782 718,81		R167	-35 169,26	+3 783 175,33	
L168	-33 272,48	+3 782 763,36		R168	-35 227,89	+3 783 187,73	
L169	-33 282,91	+3 782 771,48		R169	-35 402,52	+3 783 231,11	
L170	-33 640,28	+3 782 828,24		R170	-35 556,74	+3 783 273,62	
L171	-33 642,41	+3 782 828,57		R171	-35 673,51	+3 783 301,33	
L172	-33 635,69	+3 782 772,42		R172	-35 751,99	+3 783 318,00	
L173	-34 226,80	+3 782 919,30		R173	-36 142,50	+3 783 415,20	
L174	-34 232,16	+3 782 897,60		R174	-37 207,21	+3 783 680,21	
L175	-34 630,59	+3 782 996,76		R175	-37 264,40	+3 783 699,03	
L176	-36 155,31	+3 783 375,89		R176	-37 304,46	+3 783 704,25	
L177	-37 622,25	+3 783 740,64		R177	-37 343,46	+3 783 713,33	
L178	-37 789,31	+3 783 782,71		R178	-37 731,39	+3 783 809,90	
L179	-37 801,76	+3 783 785,85		R179	-37 805,43	+3 783 832,01	
L180	-37 838,03	+3 783 796,35		R180	-37 870,45	+3 783 851,47	
L181	-37 890,35	+3 783 813,04		R181	-37 883,57	+3 783 855,45	
L182	-37 934,53	+3 783 829,00		R182	-37 958,41	+3 783 882,85	
L183	-38 529,21	+3 784 056,86		R183	-38 321,24	+3 784 026,62	
L184	-38 562,87	+3 784 067,60		R184	-38 410,97	+3 784 061,31	
L185	-38 597,64	+3 784 077,39		R185	-38 423,94	+3 784 066,33	
L186	-38 632,09	+3 784 085,52		R186	-38 550,10	+3 784 105,81	
L187	-38 671,26	+3 784 092,76		R187	-38 656,49	+3 784 132,59	
L188	-38 711,68	+3 784 098,95		R188	-38 775,51	+3 784 154,94	
L189	-39 298,41	+3 784 169,88		R189	-38 895,05	+3 784 169,28	
L190	-39 327,78	+3 784 173,66		R190	-39 312,32	+3 784 212,66	
L191	-39 406,36	+3 784 186,17		R191	-39 409,97	+3 784 228,88	
L192	-39 810,75	+3 784 284,20		R192	-39 526,28	+3 784 255,90	
L193	-39 818,20	+3 784 285,99		R193	-39 819,06	+3 784 328,78	
L194	-40 163,74	+3 784 371,88		R194	-39 828,97	+3 784 331,24	
L195	-40 753,26	+3 784 518,31		R195	-40 161,12	+3 784 413,80	
L196	-41 846,68	+3 784 789,49		R196	-40 302,52	+3 784 449,05	
L197	-41 823,67	+3 784 882,56		R197	-40 381,23	+3 784 469,25	
L198	-41 914,46	+3 784 912,69		R198	-40 438,61	+3 784 483,09	
L199	-41 953,38	+3 784 924,17		R199	-40 577,92	+3 784 517,43	
L200	-42 031,97	+3 784 944,17		R200	-41 137,29	+3 784 656,51	
L201	-42 087,50	+3 784 956,40		R201	-41 216,80	+3 784 677,02	
L202	-42 190,30	+3 784 973,78		R202	-41 221,50	+3 784 686,15	
L203	-42 213,46	+3 784 880,16		R203	-41 244,54	+3 784 684,80	
L204	-42 672,63	+3 784 994,03		R204	-41 328,34	+3 784 711,08	

Vel	17	Van	22	P598/06
Sheet		of		

PADRESERWE KOÖRDINATE				ROAD RESERVE CO-ORDINATES			
LINKERKANT/LEFT HAND SIDE				REGTERKANT/RIGHT HAND SIDE			
	Y	X	WG 21°		Y	X	
L205	-42 843,72	+3 785 036,57		R205	-41 372,56	+3 784 727,27	
L206	-44 004,21	+3 785 324,47		R206	-41 466,09	+3 784 766,15	
L207	-44 458,64	+3 785 437,12		R207	-41 728,59	+3 784 890,37	
L208	-46 146,45	+3 785 854,97		R208	-41 822,56	+3 784 926,83	
L209	-46 828,79	+3 786 024,58		R209	-41 918,46	+3 784 958,02	
L210	-47 335,83	+3 786 149,97		R210	-42 016,09	+3 784 983,90	
L211	-49 339,24	+3 786 646,67		R211	-42 113,96	+3 785 007,66	
L212	-49 583,19	+3 786 707,40		R212	-42 173,52	+3 785 018,68	
L213	-49 636,17	+3 786 721,82		R213	-42 213,89	+3 785 023,00	
L214	-49 669,95	+3 786 733,04		R214	-42 627,56	+3 785 048,12	
L215	-50 507,54	+3 787 008,97		R215	-42 651,30	+3 785 051,03	
L216	-50 603,06	+3 787 122,82		R216	-42 698,96	+3 785 056,86	
L217	-50 627,11	+3 787 134,24		R217	-42 737,72	+3 785 061,99	
L218	-51 003,51	+3 787 244,02		R218	-42 830,12	+3 785 070,34	
L219	-51 031,95	+3 787 228,32		R219	-42 907,60	+3 785 075,95	
L220	-51 032,16	+3 787 228,39		R220	-42 907,75	+3 785 075,44	
L221	-51 116,08	+3 787 133,97		R221	-44 520,74	+3 784 444,33	
L222	-51 324,72	+3 787 666,31		R222	-46 172,93	+3 784 777,90	
L223	-51 406,59	+3 787 892,70		R223	-48 923,55	+3 784 111,77	
L224	-51 493,02	+3 787 449,49		R224	-50 021,77	+3 784 444,33	
L225	-51 645,79	+3 787 417,39		R225	-51 177,77	+3 784 111,77	
L226	-51 844,86	+3 787 423,52		R226	-52 255,22	+3 784 222,22	
L227	-51 954,09	+3 787 429,51		R227	-53 449,59	+3 784 222,22	
L228	-52 025,56	+3 787 423,70		R228	-54 999,99	+3 784 222,22	
L229	-52 025,76	+3 787 402,91		R229	-56 728,88	+3 784 222,22	
L230	-52 638,55	+3 787 408,52		R230	-58 399,66	+3 784 222,22	
L231	-53 772,91	+3 787 366,29		R231	-60 000,00	+3 784 222,22	
L232	-53 917,39	+3 787 361,58		R232	-61 562,11	+3 784 222,22	
L233	-54 114,63	+3 787 361,43		R233	-63 339,44	+3 784 222,22	
L234	-54 367,53	+3 787 347,78		R234	-65 000,00	+3 784 222,22	
L235	-54 367,02	+3 787 352,28		R235	-66 821,07	+3 784 222,22	
L236	-55 320,87	+3 787 316,20		R236	-68 810,64	+3 784 222,22	
L237	-56 159,18	+3 787 284,88		R237	-70 973,27	+3 784 222,22	
L238	-56 799,63	+3 787 259,80		R238	-73 225,41	+3 784 222,22	
L239	-57 135,33	+3 787 247,83		R239	-75 442,86	+3 784 222,22	
L240	-57 379,04	+3 787 234,88		R240	-77 471,21	+3 784 222,22	
L241	-57 509,98	+3 787 218,50		R241	-79 501,72	+3 784 222,22	
L242	-57 592,64	+3 787 203,42		R242	-81 521,84	+3 784 222,22	
L243	-57 698,56	+3 787 175,48		R243	-83 224,04	+3 787 487,65	
L244	-58 310,57	+3 787 005,46		R244	-84 914,26	+3 787 489,26	
L245	-59 560,77	+3 786 657,73		R245	-86 023,90	+3 787 479,13	
L246	-59 892,97	+3 786 565,87		R246	-87 673,23	+3 787 477,91	
L247	-60 100,33	+3 786 509,81		R247	-89 519,36	+3 787 459,07	
L248	-60 248,97	+3 786 488,93		R248	-91 520,08	+3 787 459,00	
L249	-60 320,67	+3 786 452,99		R249	-93 902,04	+3 787 444,34	
L250	-60 448,31	+3 786 426,39		R250	-96 902,24	+3 787 446,49	
L251	-60 950,12	+3 786 321,96		R251	-100 972,50	+3 787 403,99	
L252	-61 265,51	+3 786 255,90		R252	-105 032,21	+3 787 402,04	
L253	-61 419,51	+3 786 228,61		R253	-109 101,36	+3 787 400,60	
L254	-61 875,22	+3 786 128,53		R254	-113 362,93	+3 787 390,30	
L255	-61 957,18	+3 786 111,20		R255	-117 424,10	+3 787 387,97	

PADRESERWE KOÖRDINATE				ROAD RESERVE CO-ORDINATES			
LINKERKANT/LEFT HAND SIDE				REGTERKANT/RIGHT HAND SIDE			
	Y	X	WG 21°		Y	X	
L256	-62 357,25	+3 786 028,13		R256	-55 324,52	+3 787 353,91	
L257	-62 952,09	+3 785 903,76		R257	-56 164,67	+3 787 321,88	
L258	-63 339,10	+3 785 823,35		R258	-56 504,41	+3 787 309,02	
L259	-63 410,44	+3 785 808,68		R259	-56 544,67	+3 787 302,21	
L260	-63 516,02	+3 785 786,76		R260	-56 574,62	+3 787 301,26	
L261	-63 587,32	+3 785 772,04		R261	-56 615,58	+3 787 304,88	
L262	-63 701,15	+3 785 748,23		R262	-56 789,98	+3 787 298,16	
L263	-64 058,44	+3 785 673,87		R263	-56 868,04	+3 787 298,37	
L264	-64 513,95	+3 785 579,12		R264	-57 332,89	+3 787 276,87	
L265	-64 953,97	+3 785 492,70		R265	-57 506,94	+3 787 259,59	
L266	-65 107,69	+3 785 452,22		R266	-57 668,13	+3 787 225,72	
L267	-65 118,39	+3 785 450,14		R267	-57 746,04	+3 787 204,87	
L268	-65 982,95	+3 785 224,60		R268	-58 332,68	+3 787 041,79	
L269	-66 004,29	+3 785 218,06		R269	-59 475,72	+3 786 724,00	
L270	-66 026,32	+3 785 213,38		R270	-59 588,57	+3 786 692,61	
L271	-66 939,60	+3 784 973,90		R271	-60 117,08	+3 786 545,62	
L272	-67 316,27	+3 784 876,10		R272	-60 231,55	+3 786 515,86	
L273	-67 790,23	+3 784 752,51		R273	-60 289,81	+3 786 502,29	
L274	-68 268,00	+3 784 627,49		R274	-60 454,23	+3 786 467,58	
L275	-68 281,03	+3 784 595,20		R275	-60 876,96	+3 786 379,50	
L276	-68 356,76	+3 784 600,42		R276	-60 951,26	+3 786 367,81	
L277	-68 401,99	+3 784 586,96		R277	-61 263,65	+3 786 299,34	
L278	-68 410,88	+3 784 582,55		R278	-61 429,09	+3 786 267,90	
L279	-68 427,78	+3 784 586,62		R279	-61 601,34	+3 786 228,31	
L280	-68 461,98	+3 784 575,88		R280	-61 788,27	+3 786 189,60	
L281	-68 677,74	+3 784 520,76		R281	-61 980,84	+3 786 149,13	
L282	-69 004,27	+3 784 463,18		R282	-62 239,67	+3 786 095,18	
L283	-69 397,78	+3 784 528,83		R283	-62 348,39	+3 786 096,29	
L284	-69 396,32	+3 784 533,26		R284	-62 389,87	+3 786 096,93	
L285	-69 725,07	+3 784 547,03		R285	-62 415,02	+3 786 091,50	
L286	-69 842,27	+3 784 553,93		R286	-62 541,00	+3 786 032,36	
L287	-69 987,29	+3 784 573,74		R287	-62 716,55	+3 785 995,61	
L288	-70 082,33	+3 784 607,03		R288	-62 943,90	+3 785 966,86	
L289	-70 092,02	+3 784 612,56		R289	-62 993,16	+3 785 953,07	
L290	-70 202,52	+3 784 671,30		R290	-63 100,90	+3 785 928,68	
L291	-70 234,39	+3 784 692,11		R291	-63 139,88	+3 785 907,41	
L292	-70 275,86	+3 784 727,57		R292	-63 421,72	+3 785 848,53	
L293	-70 330,21	+3 784 790,70		R293	-63 603,93	+3 785 810,48	
L294	-70 412,21	+3 784 879,58		R294	-63 693,95	+3 785 791,81	
L295	-70 481,41	+3 784 949,90		R295	-64 054,57	+3 785 716,37	
L296	-70 500,92	+3 784 955,01		R296	-64 421,03	+3 785 642,52	
L297	-70 547,64	+3 784 975,79		R297	-64 459,84	+3 785 631,74	
L298	-70 598,12	+3 784 990,22		R298	-64 518,64	+3 785 619,54	
L299	-70 698,03	+3 784 998,99		R299	-64 851,26	+3 785 550,10	
L300	-70 725,74	+3 785 017,40		R300	-64 919,43	+3 785 541,70	
L301	-70 775,70	+3 785 021,31		R301	-64 967,77	+3 785 529,76	
L302	-70 803,72	+3 785 043,03		R302	-65 090,44	+3 785 497,90	
L303	-70 870,19	+3 785 052,09		R303	-65 578,58	+3 785 370,15	
L304	-71 129,30	+3 785 052,81		R304	-66 005,60	+3 785 258,60	
L305	-71 168,85	+3 785 086,23		R305	-66 943,98	+3 785 013,41	
L306	-71 212,68	+3 785 098,56		R306	-67 002,12	+3 784 998,98	

Vel	19	Van	22	P598/06
Sheet		of		

PADRESERWE KOÖRDINATE				ROAD RESERVE CO-ORDINATES			
LINKERKANT/LEFT HAND SIDE				REGTERKANT/RIGHT HAND SIDE			
	Y	X	WG 21 ^o		Y	X	
L307	-71 359,21	+2 785 118,28	R307	-67 318,68	+3 784 918,39		
L308	-71 407,14	+2 785 113,01	R308	-67 784,66	+3 784 793,67		
L309	-71 441,15	+3 785 106,22	R309	-68 262,63	+3 784 671,80		
L310	-71 459,20	+3 785 092,51	R310	-68 396,48	+3 784 633,76		
L311	-71 486,76	+3 785 110,74	R311	-68 554,21	+3 784 598,65		
L312	-71 509,40	+3 785 127,91	R312	-68 633,04	+3 784 585,51		
L313	-71 540,87	+3 785 139,14	R313	-68 726,57	+3 784 567,93		
L314	-71 604,24	+2 785 153,66	R314	-68 795,30	+3 784 551,38		
L315	-71 663,82	+3 785 168,81	R315	-68 824,02	+3 784 548,56		
L316	-71 720,28	+3 785 188,70	R316	-68 863,25	+3 784 546,30		
L317	-71 777,67	+3 785 214,63	R317	-68 902,67	+3 784 545,23		
L318	-71 830,51	+3 785 245,16	R318	-68 968,00	+3 784 545,23		
L319	-71 881,20	+3 785 278,33	R319	-68 986,66	+3 784 546,11		
L320	-71 998,44	+3 785 349,76	R320	-69 035,85	+3 784 548,71		
L321	-72 055,67	+3 785 380,19	R321	-69 120,53	+3 784 554,90		
L322	-72 074,38	+3 785 369,63	R322	-69 124,04	+3 784 556,93		
L323	-72 212,70	+3 785 402,38	R323	-69 222,22	+3 784 559,00		
L324	-72 725,67	+3 785 482,57	R324	-69 266,66	+3 784 565,61		
L325	-73 567,00	+2 785 614,23	R325	-69 333,33	+3 784 577,48		
L326	-74 497,13	+3 785 760,12	R326	-69 444,44	+3 784 594,17		
L327	-74 855,86	+3 785 815,36	R327	-69 555,55	+3 784 590,29		
L328	-74 953,98	+3 785 825,11	R328	-69 666,66	+3 784 584,33		
L329	-75 041,50	+3 785 829,10	R329	-69 777,77	+3 784 587,72		
L330	-75 129,26	+3 785 828,79	R330	-69 888,88	+3 784 597,16		
L331	-75 227,63	+3 785 823,62	R331	-69 999,99	+3 784 606,24		
L332	-75 276,59	+3 785 819,05	R332	-70 111,11	+3 784 648,00		
L333	-75 332,49	+3 785 812,15	R333	-70 222,22	+3 784 659,32		
L334	-75 430,29	+3 785 795,98	R334	-70 333,33	+3 784 725,02		
L335	-75 494,97	+3 785 782,29	R335	-70 444,44	+3 784 775,24		
L336	-75 569,16	+3 785 763,11	R336	-70 555,55	+3 784 884,62		
L337	-75 632,42	+3 785 744,19	R337	-70 666,66	+3 784 941,61		
L338	-76 497,07	+3 785 453,20	R338	-70 777,77	+3 784 984,23		
L339	-76 517,73	+3 785 446,23	R339	-70 888,88	+3 784 992,24		
L340	-76 963,91	+3 785 296,08	R340	-70 999,99	+3 785 024,36		
L341	-77 814,18	+3 785 009,21	R341	-70 111,11	+3 785 044,11		
L342	-78 340,78	+3 784 820,47	R342	-70 222,22	+3 785 056,33		
L343	-78 610,25	+3 784 731,16	R343	-70 333,33	+3 785 062,30		
L344	-81 022,68	+3 783 924,53	R344	-70 444,44	+3 785 082,70		
L345	-81 057,62	+3 783 914,84	R345	-70 555,55	+3 785 085,81		
L346	-81 083,41	+3 783 909,24	R346	-70 666,66	+3 785 083,74		
L347	-81 133,73	+3 783 901,08	R347	-70 777,77	+3 785 075,21		
L348	-81 533,34	+3 783 842,28	R348	-70 888,88	+3 785 090,74		
L349	-82 171,67	+3 783 747,75	R349	-70 999,99	+3 785 099,75		
L350	-82 622,20	+3 783 690,91	R350	-70 111,11	+3 785 101,22		
L351	-82 785,24	+3 783 686,57	R351	-71 222,22	+3 785 117,75		
L352	-82 865,30	+3 783 683,83	R352	-71 333,33	+3 785 114,22		
L353	-82 925,61	+3 783 683,13	R353	-71 444,44	+3 785 137,75		
L354	-82 985,57	+3 783 683,67	R354	-71 555,55	+3 785 121,22		
L355	-83 323,64	+3 783 697,28	R355	-71 666,66	+3 785 143,75		
L356	-84 228,70	+3 783 736,89	R356	-71 777,77	+3 785 153,40		
L357	-84 571,99	+3 783 748,38	R357	-71 888,88	+3 785 168,15		

PADRESERWE KOÖRDINATE				ROAD RESERVE CO-ORDINATES			
LINKERKANT/LEFT HAND SIDE				REGTERKANT/RIGHT HAND SIDE			
	Y	X	WG 21 ^o		Y	X	
L358	-84 585,99	+3 783 748,52	R358	-71 446,31	+3 785 183,40		
L359	-85 142,79	+3 783 775,99	R359	-71 458,58	+3 785 184,46		
L360	-85 652,80	+3 783 798,84	R360	-71 526,98	+3 785 174,98		
L361	-86 117,64	+3 783 819,36	R361	-71 567,71	+3 785 178,90		
L362	-87 043,73	+3 783 859,58	R362	-71 635,93	+3 785 193,68		
L363	-87 306,94	+3 783 870,97	R363	-71 673,35	+3 785 205,06		
L364	-89 754,52	+3 783 977,34	R364	-71 745,21	+3 785 234,69		
L365	-90 494,30	+3 784 007,33	R365	-71 778,81	+3 785 254,51		
L366	-90 707,69	+3 784 014,33	R366	-71 811,71	+3 785 275,52		
L367	-90 721,58	+3 784 011,77	R367	-71 844,75	+3 785 298,20		
L368	-90 840,04	+3 784 011,99	R368	-71 877,69	+3 785 319,33		
L369	-90 961,01	+3 784 000,99	R369	-71 913,81	+3 785 337,09		
L370	-90 998,23	+3 784 000,11	R370	-71 948,23	+3 785 358,66		
L371	-91 576,58	+3 784 457,99	R371	-71 985,43	+3 785 377,52		
L372	-91 611,13	+3 784 457,99	R372	-73 049,24	+3 785 398,02		
L373	-91 611,13	+3 784 457,99	R373	-73 073,51	+3 785 411,55		
L374	-91 611,13	+3 784 457,99	R374	-73 200,68	+3 785 449,95		
L375	-91 611,13	+3 784 457,99	R375	-73 718,47	+3 785 511,22		
L376	-91 611,13	+3 784 457,99	R376	-73 793,67	+3 785 531,22		
L377	-91 611,13	+3 784 457,99	R377	-73 832,66	+3 785 541,22		
L378	-91 611,13	+3 784 457,99	R378	-73 872,27	+3 785 551,22		
L379	-91 611,13	+3 784 457,99	R379	-73 089,97	+3 785 561,22		
L380	-91 611,13	+3 784 457,99	R380	-73 208,39	+3 785 571,22		
L381	-91 611,13	+3 784 457,99	R381	-73 445,09	+3 785 581,22		
L382	-91 611,13	+3 784 457,99	R382	-73 523,88	+3 785 591,22		
L383	-91 611,13	+3 784 457,99	R383	-73 642,26	+3 785 601,22		
L384	-91 611,13	+3 784 457,99	R384	-73 682,71	+3 785 611,22		
L385	-93 785,91	+3 784 149,89	R385	-73 999,28	+3 785 621,22		
L386	-93 793,82	+3 784 149,49	R386	-74 038,49	+3 785 631,22		
L387	-93 826,26	+3 784 148,04	R387	-74 485,69	+3 785 641,22		
L388	-93 845,76	+3 784 156,04	R388	-74 809,18	+3 785 651,22		
L389	-93 914,68	+3 784 159,11	R389	-74 889,08	+3 785 661,22		
L390	-94 345,65	+3 784 179,28	R390	-74 969,33	+3 785 671,22		
L391	-94 376,62	+3 784 189,28	R391	-75 009,52	+3 785 681,22		
L392	-94 600,93	+3 784 187,37	R392	-75 090,21	+3 785 691,22		
L393	-94 737,13	+3 784 190,43	R393	-75 170,68	+3 785 701,22		
L394	-94 775,98	+3 784 195,31	R394	-75 251,32	+3 785 711,22		
L395	-94 833,16	+3 784 196,81	R395	-75 331,26	+3 785 721,22		
L396	-94 921,77	+3 784 202,81	R396	-75 371,16	+3 785 731,22		
L397	-95 214,63	+3 784 205,71	R397	-75 410,93	+3 785 741,22		
L398	-95 295,27	+3 784 202,78	R398	-75 489,94	+3 785 751,22		
L399	-95 395,57	+3 784 205,92	R399	-75 529,23	+3 785 761,22		
L400	-95 434,42	+3 784 217,82	R400	-75 606,91	+3 785 770,29		
L401	-95 560,23	+3 784 230,84	R401	-75 645,49	+3 785 778,49		
L402	-95 812,60	+3 784 242,88	R402	-76 525,08	+3 785 482,17		
L403	-95 925,91	+3 784 246,55	R403	-76 978,75	+3 785 332,43		
L404	-96 013,90	+3 784 248,36	R404	-78 825,32	+3 785 043,86		
L405	-96 189,27	+3 784 258,98	R405	-78 684,71	+3 784 754,13		
L406	-96 552,47	+3 784 274,69	R406	-79 379,09	+3 784 520,10		
L407	-96 608,65	+3 784 278,44	R407	-79 456,35	+3 784 498,33		
L408	-96 657,37	+3 784 269,53	R408	-79 493,99	+3 784 485,54		

Vel 21 Van 22 P598/06
Sheet of

PADRESERWE KOÖRDINATE				/ ROAD RESERVE CO-ORDINATES			
LINKERKANT/LEFT HAND SIDE				REGTERKANT/RIGHT HAND SIDE			
	Y	X	WG 21°		Y	X	
L409	-96 688,24	+3 784 277,13		R409	-79 568,67	+3 784 456,17	
				R410	-79 618,82	+3 784 439,34	
				R411	-80 597,34	+3 784 109,51	
				R412	-80 895,33	+3 784 011,22	
				R413	-80 930,26	+3 784 000,43	
				R414	-80 972,02	+3 783 988,67	
				R415	-81 048,92	+3 783 968,59	
				R416	-81 087,72	+3 783 959,35	
				R417	-81 165,43	+3 783 942,28	
				R418	-81 204,65	+3 783 934,63	
				R419	-81 263,35	+3 783 923,91	
				R420	-81 549,27	+3 783 880,81	
				R421	-82 046,53	+3 783 806,94	
				R422	-82 548,28	+3 783 733,41	
				R423	-82 607,64	+3 783 726,44	
				R424	-82 718,19	+3 783 722,46	
				R425	-82 879,08	+3 783 722,98	
				R426	-83 320,23	+3 783 742,19	
				R427	-84 219,83	+3 783 780,45	
				R428	-84 571,81	+3 783 795,69	
				R429	-84 623,88	+3 783 800,81	
				R430	-84 640,93	+3 783 804,20	
				R431	-85 136,83	+3 783 821,24	
				R432	-85 651,76	+3 783 843,63	
				R433	-86 121,14	+3 783 862,81	
				R434	-87 040,86	+3 783 903,72	
				R435	-87 304,81	+3 783 915,16	
				R436	-88 846,67	+3 783 982,34	
				R437	-89 681,59	+3 784 018,53	
				R438	-89 749,61	+3 784 021,50	
				R439	-90 714,55	+3 784 063,55	
				R440	-91 575,60	+3 784 100,74	
				R441	-92 059,94	+3 784 122,07	
				R442	-92 868,62	+3 784 157,25	
				R443	-92 976,13	+3 784 161,92	
				R444	-93 448,26	+3 784 182,43	
				R445	-93 912,38	+3 784 202,67	
				R446	-94 360,70	+3 784 222,19	
				R447	-95 053,72	+3 784 253,05	
				R448	-96 314,64	+3 784 308,03	
				R449	-96 548,91	+3 784 318,18	
				R450	-96 626,25	+3 784 333,49	

Vel	22	Van	22	P598/06
Sheet		of		

NOTICE TO:

SUBSCRIBERS

OF

GOVERNMENT GAZETTES

Subscribers who have previously arranged to collect their weekly publications of ~~Government Gazettes~~ from the Government Printing Works in the Masada Building, are hereby requested to collect their publications from the Old Government Printing Works Building at the Security Officer's Bay at the Proes Street entrance, with effect from the 16th of October 2006.

We look forward to your ongoing support

Contact Person: **Montjane M. Z. (Mr)**

Mobile Phone: 083-640 6121..

Telephone: (012) 334-4653.

Looking for out of print issues of Government and Provincial Gazettes

We can provide photocopies
We can provide photocopies

Contact Contact

The National Library of South Africa,
Pretoria Campus
PO Box 397
0001 PRETORIA

Physical address

C/o Andries and Vermeulen Streets
Entrance in Andries Street

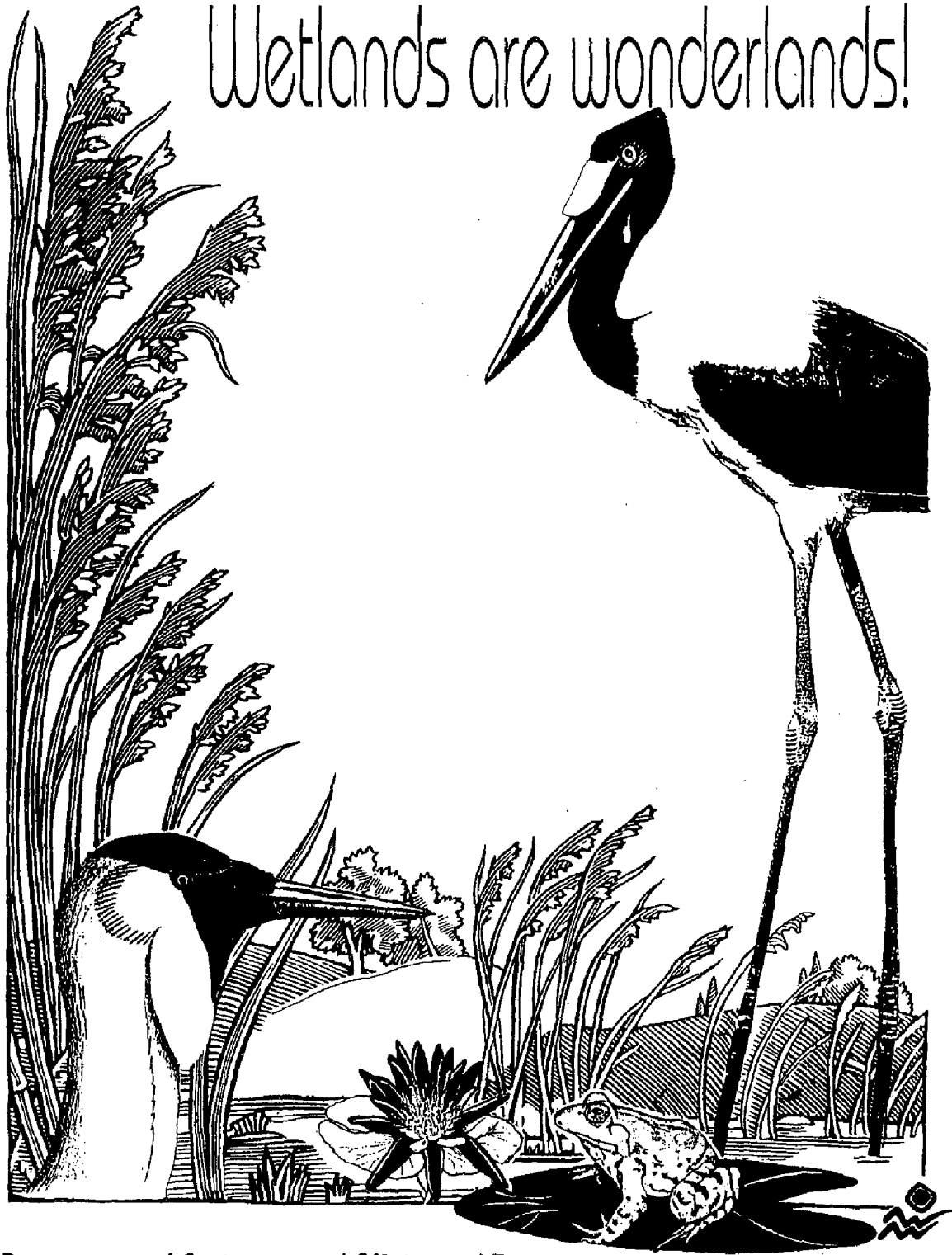
Contact details

Tel: (012) 321-8931

Fax: (012) ~~325-5984~~

E-mail: infodesk@nlsa.ac.za

Wetlands are wonderlands!



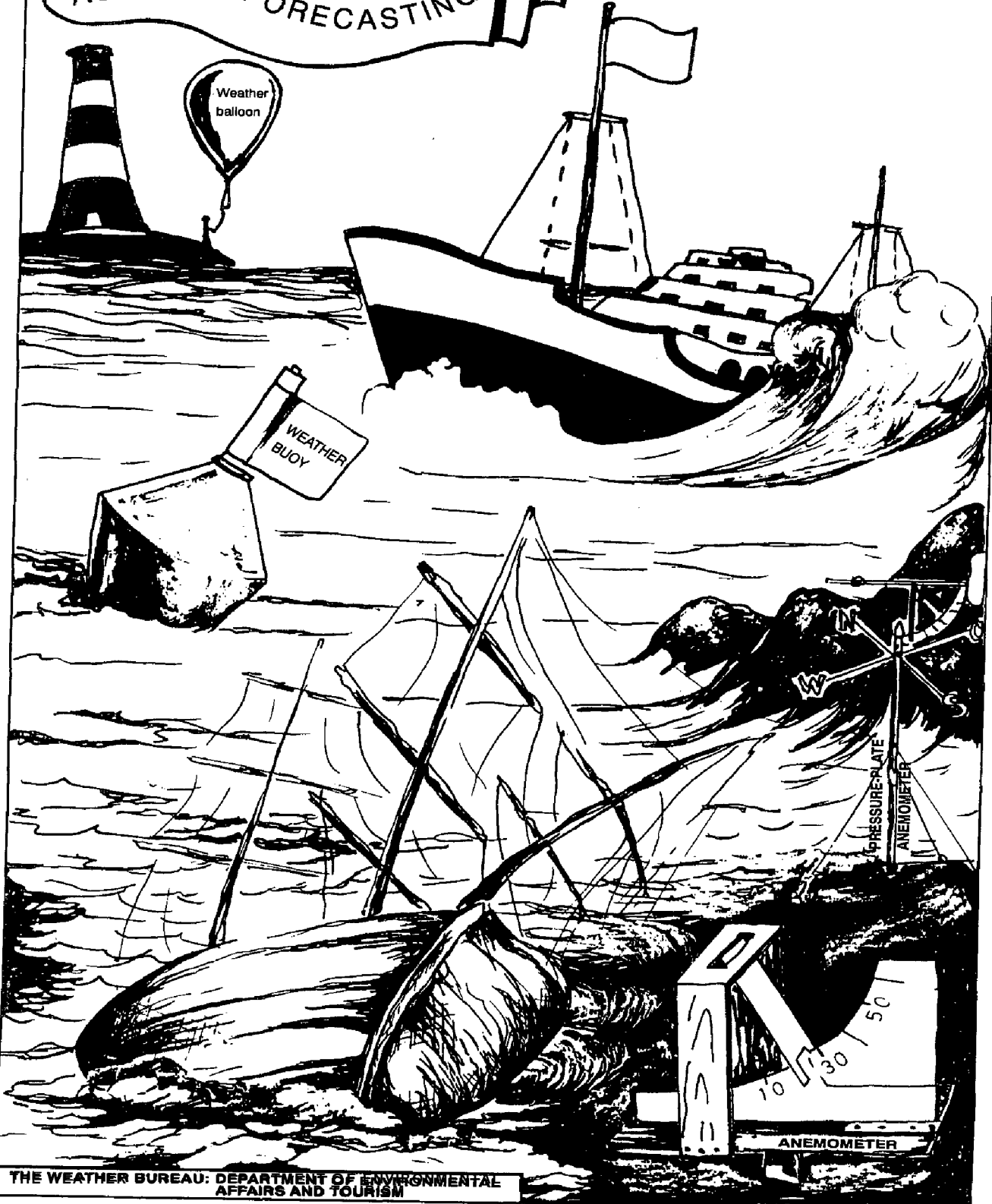
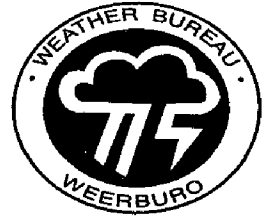
Department of Environmental Affairs and Tourism

THE WEATHER BUREAU HELPS FARMERS TO PLAN THEIR CROP



THE WEATHER BUREAU: DEPARTMENT OF ENVIRONMENTAL AFFAIRS & TOURISM
DIE WEERBURO: DEPARTEMENT VAN OMGEWINGSAKE EN TOERISME

KEEP YOUR SHIP GOING.
PHONE THE WEATHER
BUREAU FOR THE MOST
ACCURATE FORECASTING



THE WEATHER BUREAU: DEPARTMENT OF ENVIRONMENTAL
AFFAIRS AND TOURISM

Printed by and obtainable from the Government Printer, Bosman Street, Private Bag X85, Pretoria, 0001
Publications: Tel: (012) 334-4508, 334-4509, 334-4510
Advertisements: Tel: (012) 334-4673, 334-4674, 334-4504
Subscriptions: Tel: (012) 334-4735, 334-4736, 334-4737
Cape Town Branch: Tel: (021) 465-7531

Gedruk deur en verkrygbaar by die Staatsdrukker, Bosmanstraat, Privaatsak X85, Pretoria, 0001
Publikasies: Tel: (012) 334-4508, 334-4509, 334-4510
Advertensies: Tel: (012) 334-4673, 334-4674, 334-4504
Subskripsies: Tel: (012) 334-4735, 334-4736, 334-4737
Kaapstad-tak: Tel: (021) 465-7531