

**CONTENTS****INHOUD**

<i>No.</i>	<i>Page No.</i>	<i>Gazette No.</i>	<i>No.</i>	<i>Bladsy No.</i>	<i>Koerant No.</i>
<b>GOVERNMENT NOTICE</b>			<b>GOEWERMENTSKENNISGEWING</b>		
<b>Transport, Department of</b>			<b>Vervoer, Departement van</b>		
<i>Government Notice</i>			<i>Goewermentskennisgewing</i>		
266			266		
South African National Roads Agency Limited and the National Roads Act (7/1998): The South African National Roads Agency Limited: Declaration amendment of National Road N2 Section 2: Amendment of Declaration No. 543 2003 .....			Suid-Afrikaanse Nasionale Padagentskap Beperk en die Nasionale Paaie Wet (7/1998): Die Suid-Afrikaanse Nasionale Padagentskap Beperk: Verklaring wysiging van Nasionale Pad N2 Seksie 2: Wysiging van Verklaring No. 543 van 2003 .....		
	3	30843		4	30843

**GOVERNMENT NOTICE**  
**GOEWERWENTSKENNIISGEWING**

**DEPARTMENT OF TRANSPORT**  
**DEPARTEMENT VAN VERVOER**

No. 266

7 March 2008

**THE SOUTH AFRICAN NATIONAL ROADS**  
**AGENCY LIMITED**

Registration No: 98/09584/06

Registration No: 98/09584/06

**DECLARATION AMENDMENT OF NATIONAL ROAD N2 SECTION 2**  
**DECLARATION AMENDMENT OF NATIONAL ROAD N2 SECTION 2**

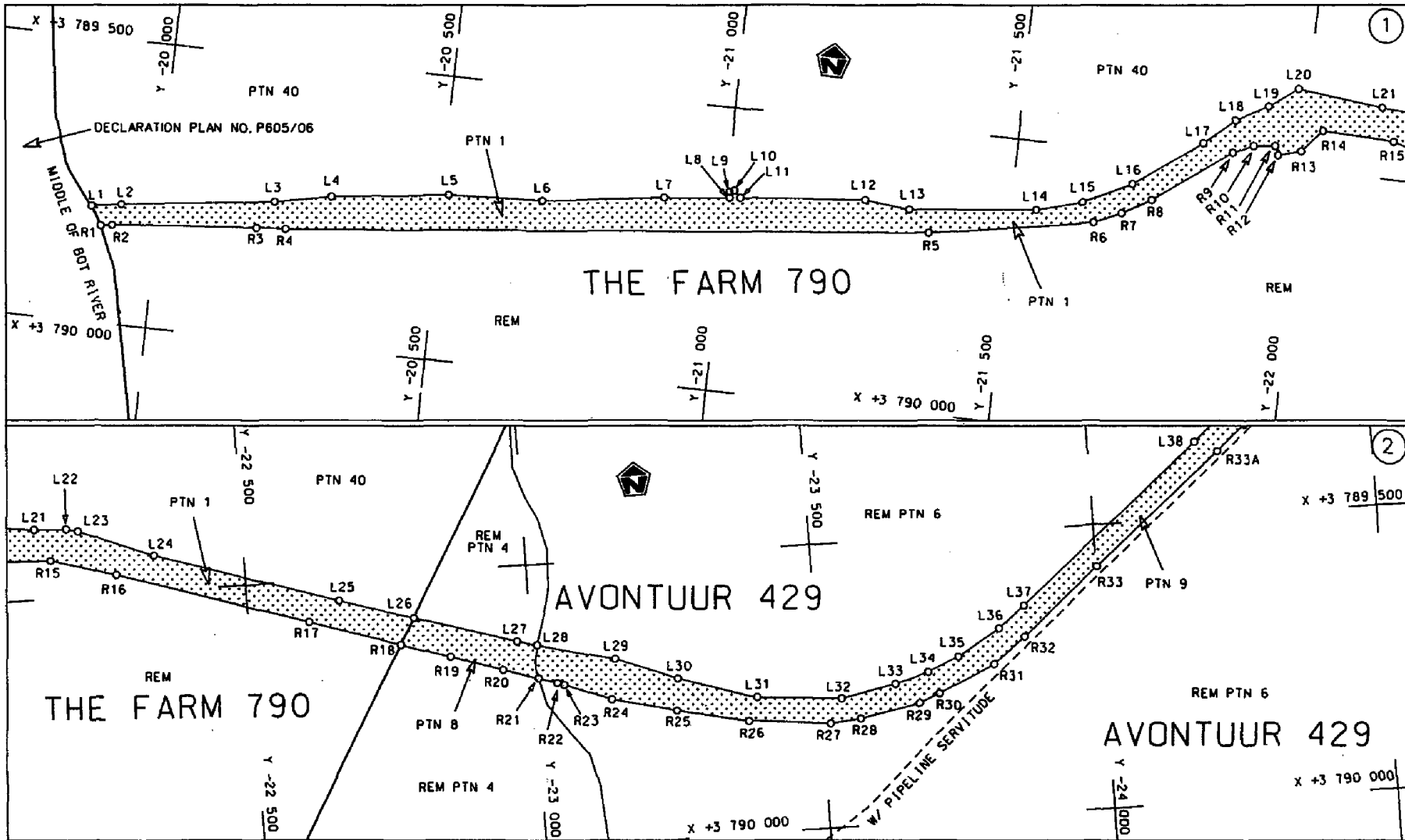
AMENDMENT OF DECLARATION NO. 543 OF 2003

By virtue of section 40 (1)(b) of the South African National Roads Agency Limited and the National Roads Act, 1998 (Act No. 7 of 1998), I hereby amend Declaration No. 543 of 2003 by substituting the section of the descriptive declaration from Bot River up to Caledon, with the subjoined sheets 1 to 10 of Plan No. P609/06.

**[National Road N2 Section 2: Bot River – Caledon ( 22km)]**

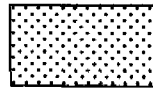
  
**MINISTER OF TRANSPORT**





Die Suid Afrikaanse Nasionale Podogenskop Beperk  
The South African National Roads Agency Limited

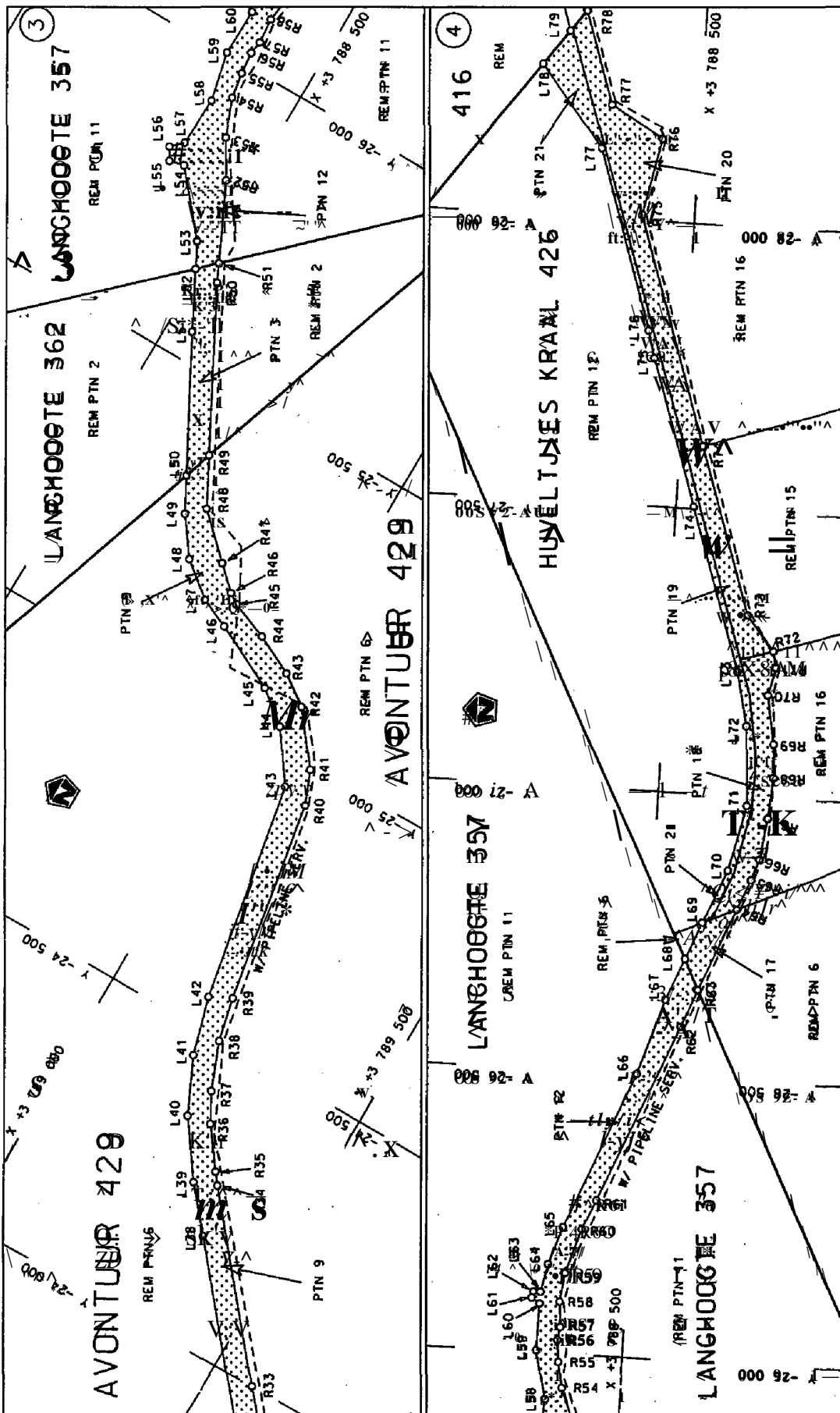
Die figuur getoon  
The figure shown

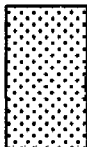


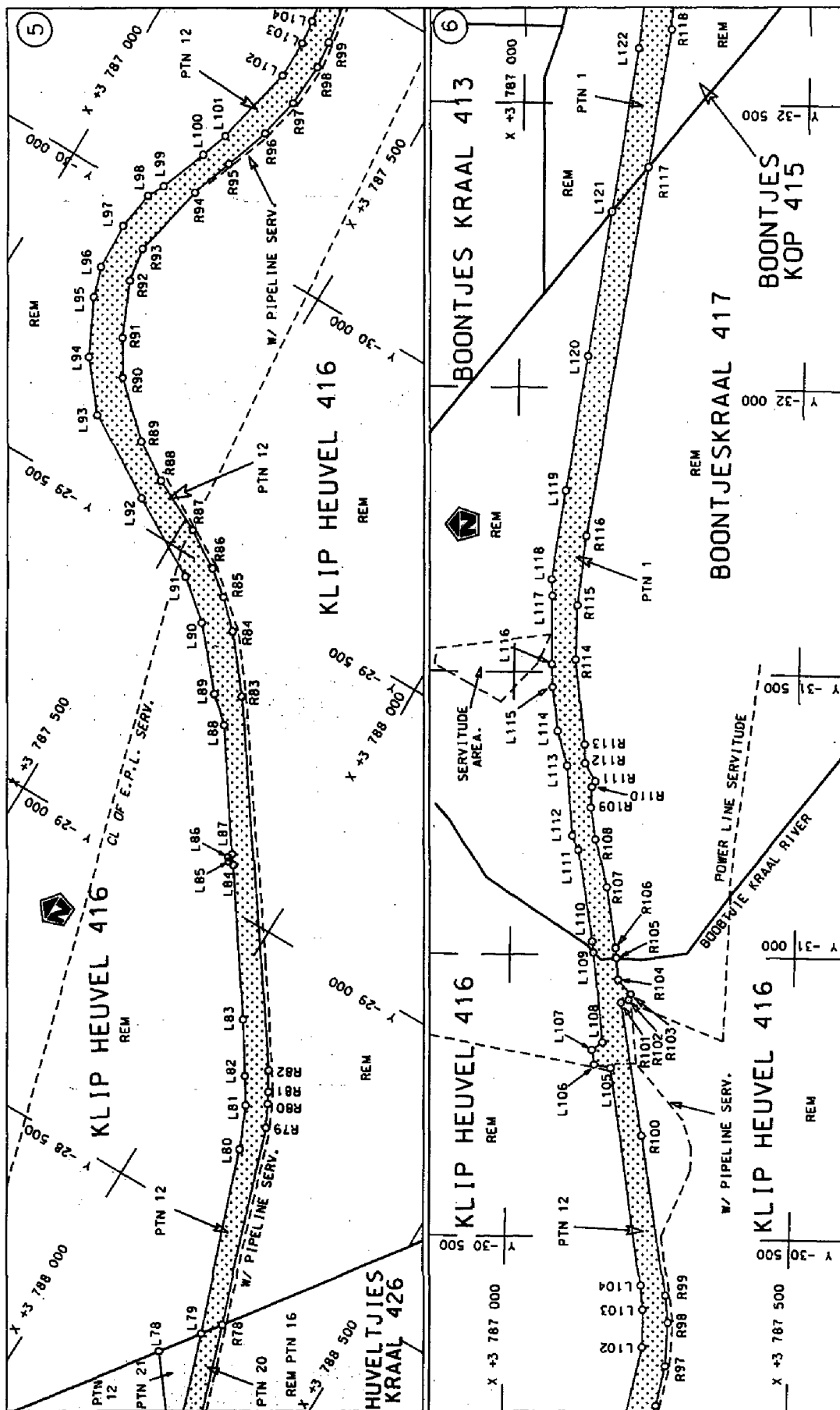
stel die padreserwe voor van 'n gedeelte  
represents the road reserve of a portion  
van Nasionale Roete K2 Sektie 2  
of National Route of National Route Section

Vel Sheet 1 von of 10

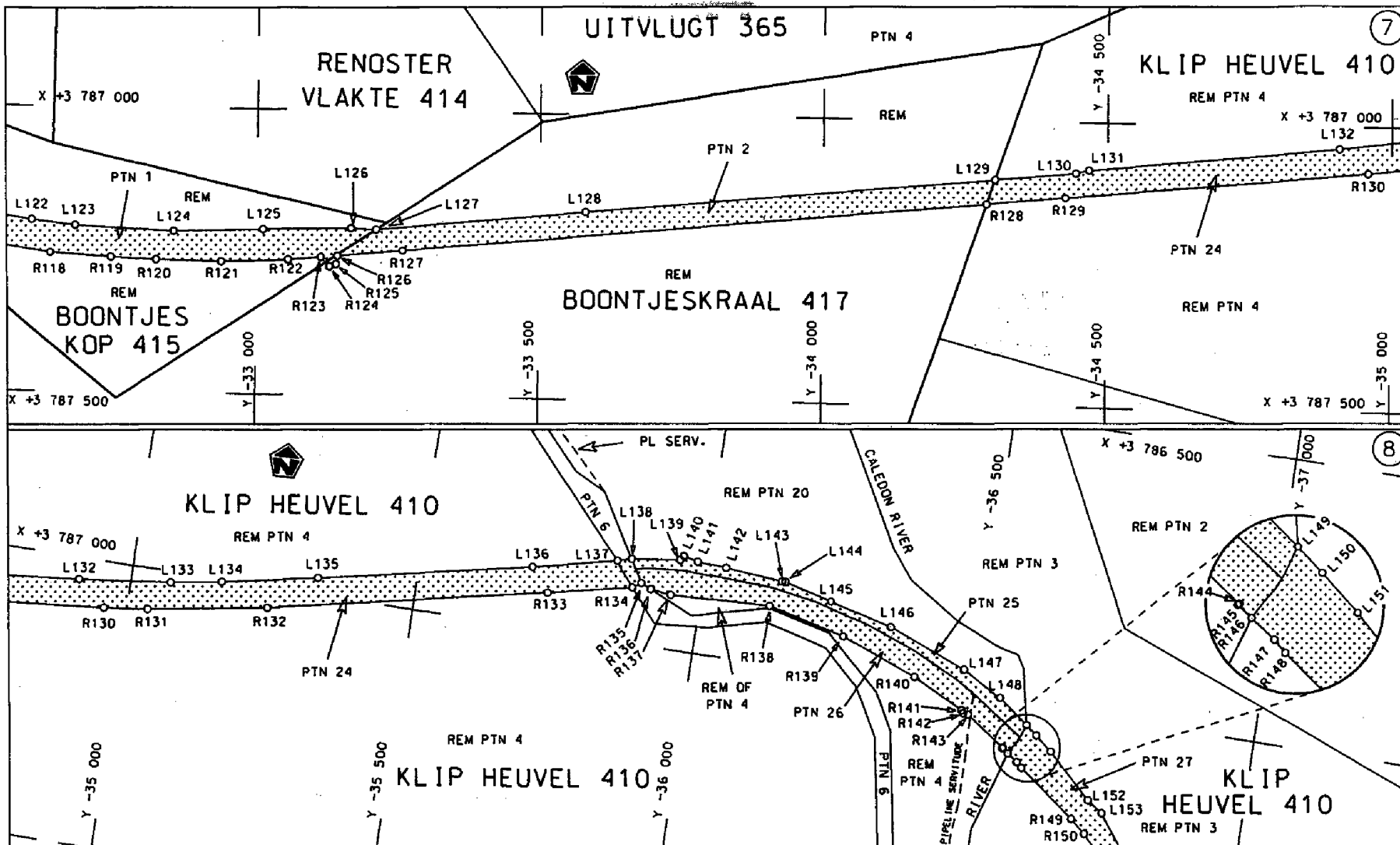
Plan P609/06

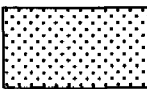


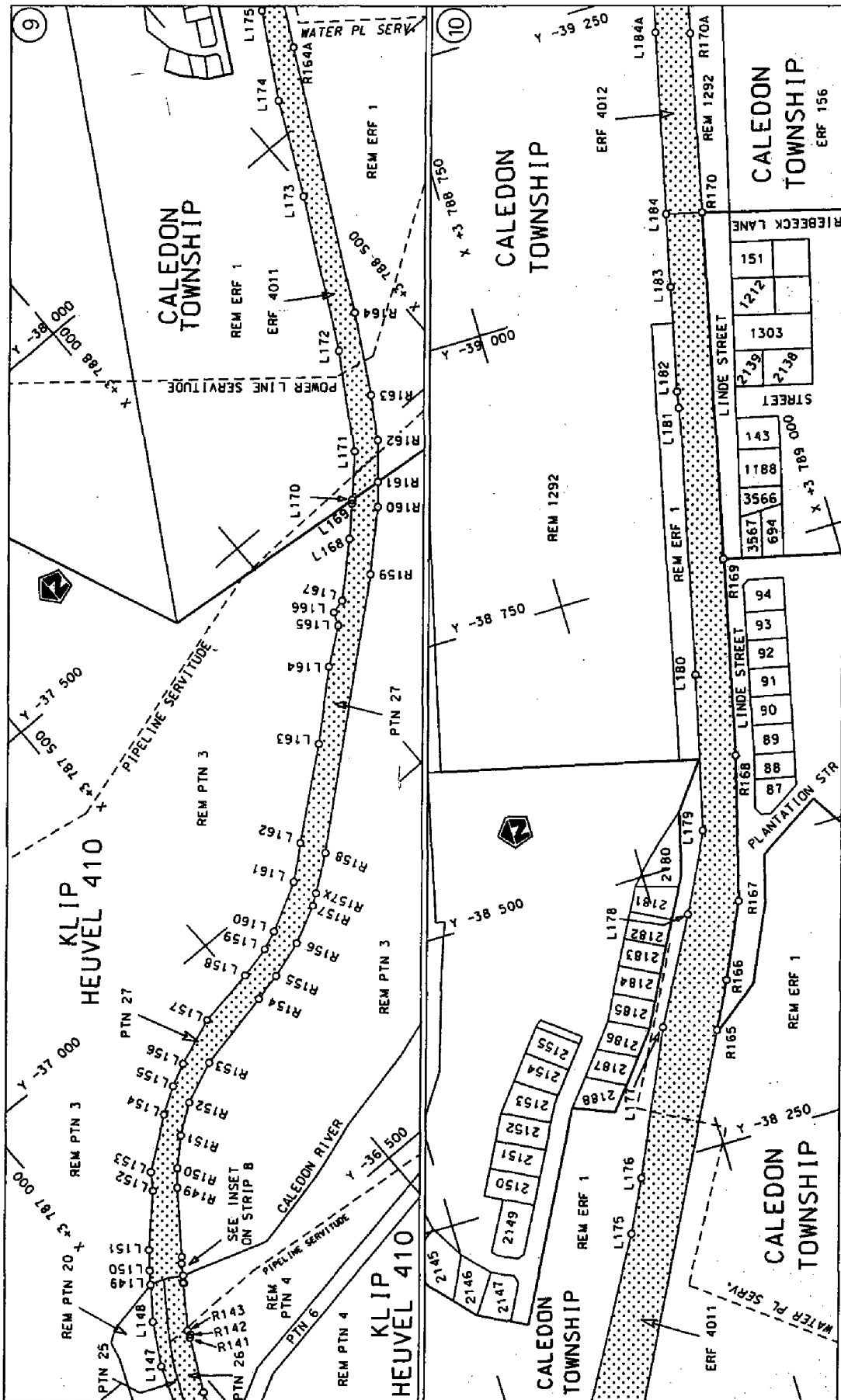
<p>Die Suid Afrikaanse Nasionale Padogenskap Bepoerk The South African National Roads Agency Limited</p>	<p>Die figuur getoon The figure shown</p> 	<p>Maatskappij se positiese voor van in gedagte represents the road reserve of as portion Nasionale Padogenskap of National Roads Agency</p>	<p>Wet Voorn Sheet 2 of 10 Plan P609/06</p>
--	---	--	---



<p>Die Suid-Afrikaanse Nasionale Roadwyskapsagentskap The South African National Road Agency Limited</p>	<p>Die figure is gebaseer op die figure wat in die plan getoon word. The figures shown are based on the figures shown in the plan.</p>	<p>Die plan is gemaak vir die doeleinde van die N2 se uitbreiding. The plan is made for the purpose of the extension of the N2.</p>	<p>Vol. 5 van 9 Blad 5 of 9 Plan P8092/06</p>
--	--	---	---



<p>Die Suid Afrikaanse Nasionale Podogenskop Beperk The South African National Roads Agency Limited</p>	<p>Die figuur getoon The figure shown</p>		<p>stel die podereserve voor van 'n gedeelte represents the road reserve of a portion van Nasionale Roete M2 of National Route</p>	<p>Seksie Section 2</p>	<p>Vel Sheet 4 of 10 Plan P609/06</p>
---	---	--	--	-----------------------------	---



Die Suid Afrikaanse Nasionale Kopieer- en Reprograsie Maatskappij Limited

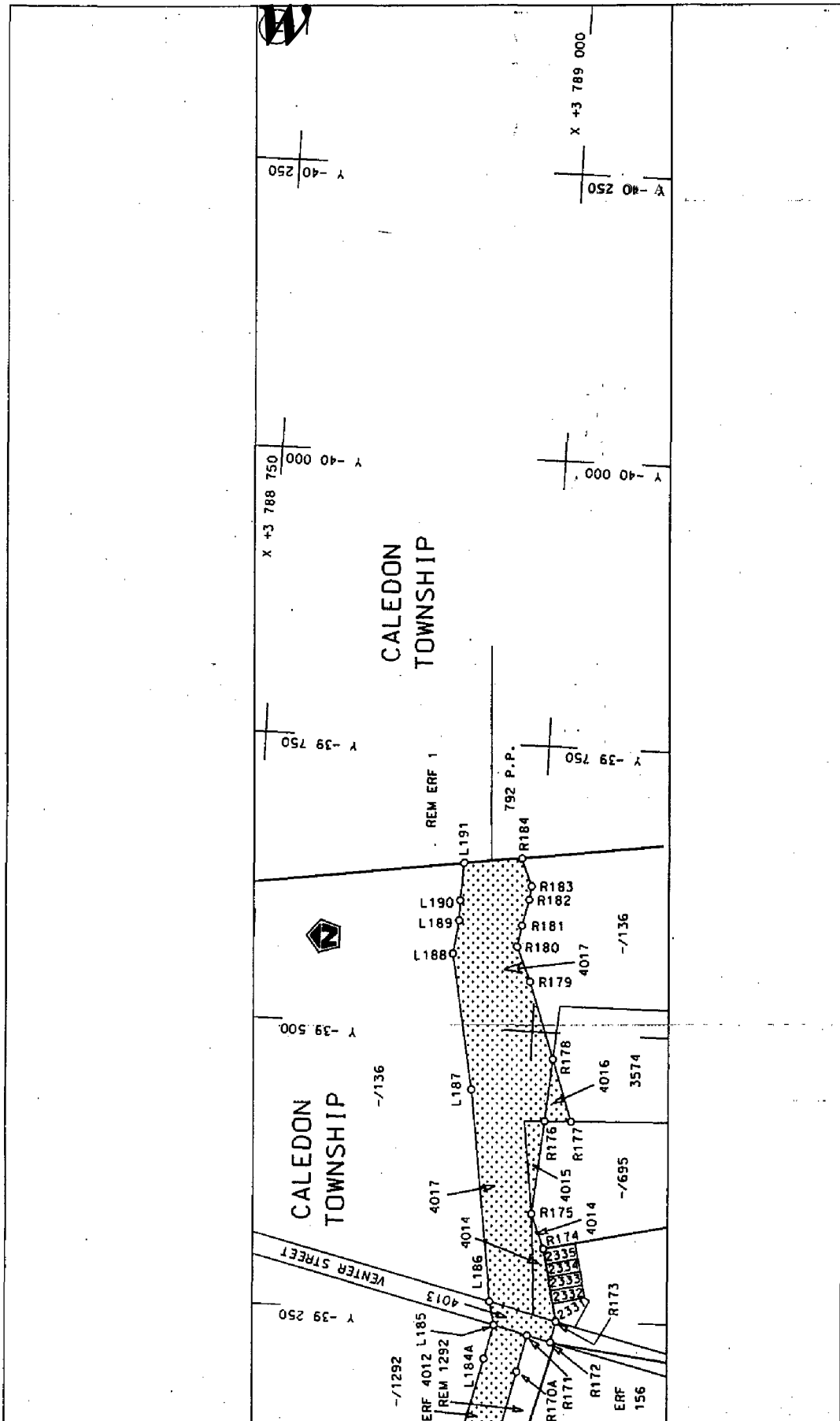
Die figuur getoon  
The figure shown

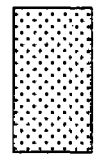
Die figuur getoon  
The figure shown

step... adreseerwe voor van 'n...  
represents the road reserve of...  
van Nasionale Roete N2  
of National Route

Vel Sheet 5 of 10  
Plan P809/06





<p>Die Suid Afrikaanse Nasionale Padagentskap Beperk The South African National Roads Agency Limited</p>	<p>Die figuur getoon The figure shown</p> 	<p>stelt die padreserwe voor van 'n gedeelte represents the road reserve of a portion van Nasionale-roete N2 of National Route</p> <p>2</p>	<p>Vel Sheet 6 of 10 Plan P699796</p>
--	---	---	---

PADRESERWE KOÖRDINATE / ROAD RESERVE CO-ORDINATES						
LINKERKANT/LEFT HAND SIDE			REGTERKANT/RIGHT HAND SIDE			
	Y	X	WG 19°	Y	X	
L1	-19 882.922	3 789 795.721		R1	-19 902.322	3 789 829.057
L2	-19 935.139	3 789 788.041		R2	-19 922.303	3 789 825.760
L3	-20 205.019	3 789 753.747		R3	-20 177.578	3 789 802.662
L4	-20 305.216	3 789 732.885		R4	-20 229.616	3 789 799.129
L5	-20 512.356	3 789 707.412		R5	-21 361.182	3 789 682.377
L6	-20 679.386	3 789 699.389		R6	-21 646.677	3 789 632.508
L7	-20 891.671	3 789 671.239		R7	-21 693.731	3 789 610.588
L8	-21 006.024	3 789 658.413		R8	-21 744.025	3 789 581.460
L9	-21 005.174	3 789 648.167		R9	-21 876.216	3 789 483.423
L10	-21 012.700	3 789 645.053		R10	-21 911.362	3 789 467.847
L11	-21 024.740	3 789 656.643		R11	-21 948.750	3 789 463.626
L12	-21 243.847	3 789 636.260		R12	-21 955.401	3 789 479.249
L13	-21 322.888	3 789 644.564		R13	-21 996.122	3 789 467.741
L14	-21 544.496	3 789 620.780		R14	-22 031.296	3 789 428.045
L15	-21 623.897	3 789 598.946		R15	-22 157.765	3 789 433.152
L16	-21 707.045	3 789 557.254		R16	-22 272.302	3 789 466.147
L17	-21 823.107	3 789 472.536		R17	-22 607.428	3 789 572.691
L18	-21 875.850	3 789 426.541		R18	-22 767.348	3 789 624.130
L19	-21 931.625	3 789 395.970		R19	-22 853.876	3 789 651.963
L20	-21 981.204	3 789 359.709		R20	-22 946.445	3 789 681.458
L21	-22 132.396	3 789 376.369		R21	-23 007.759	3 789 700.377
L22	-22 189.184	3 789 379.514		R22	-23 040.210	3 789 710.539
L23	-22 209.838	3 789 384.317		R23	-23 052.315	3 789 714.832
L24	-22 340.792	3 789 437.015		R24	-23 133.654	3 789 746.511
L25	-22 664.536	3 789 539.113		R25	-23 246.385	3 789 774.032
L26	-22 793.885	3 789 578.392		R26	-23 371.366	3 789 801.618
L27	-22 974.277	3 789 633.173		R27	-23 514.692	3 789 816.298
L28	-23 008.908	3 789 641.792		R28	-23 568.106	3 789 811.762
L29	-23 144.157	3 789 675.966		R29	-23 673.246	3 789 791.640
L30	-23 251.988	3 789 717.575		R30	-23 708.942	3 789 777.329
L31	-23 388.488	3 789 761.177		R31	-23 807.934	3 789 732.104
L32	-23 537.510	3 789 773.354		R32	-23 864.978	3 789 687.675
L33	-23 633.347	3 789 754.748		R33	-24 000.708	3 789 574.090
L34	-23 692.034	3 789 738.350		R34	-24 278.021	3 789 342.455
L35	-23 746.056	3 789 714.261		R35	-24 297.672	3 789 327.240
L36	-23 820.658	3 789 669.657		R36	-24 365.132	3 789 276.871
L37	-23 868.581	3 789 632.911		R37	-24 415.769	3 789 248.972
L38	-24 188.683	3 789 366.079		R38	-24 498.701	3 789 216.022
L39	-24 263.420	3 789 302.634		R39	-24 574.778	3 789 198.632
L40	-24 358.130	3 789 234.552		R40	-24 931.405	3 789 135.662
L41	-24 455.375	3 789 188.927		R41	-24 990.950	3 789 111.338
L42	-24 555.580	3 789 161.041		R42	-25 078.958	3 789 043.220
L43	-24 942.876	3 789 088.271		R43	-25 116.247	3 788 990.743
L44	-25 029.997	3 789 027.844		R44	-25 150.343	3 788 920.956
L45	-25 075.380	3 788 970.848		R45	-25 177.165	3 788 853.945
L46	-25 132.664	3 788 855.405		R46	-25 189.642	3 788 835.524
L47	-25 156.596	3 788 802.464		R47	-25 227.207	3 788 795.507
L48	-25 205.331	3 788 741.744		R48	-25 295.540	3 788 723.943
L49	-25 269.691	3 788 694.644		R49	-25 378.651	3 788 680.030
L50	-25 328.719	3 788 663.052		R50	-25 646.927	3 788 538.281
L51	-25 551.527	3 788 543.802		R51	-25 678.870	3 788 522.997

Vel	7	Van	10	P609/06
Sheet		of		

PADRESERWE KOÖRDINATE / ROAD RESERVE CO-ORDINATES						
LINKERKANT/LEFT HAND SIDE				REGTERKANT/RIGHT HAND SIDE		
	Y	X	WG 19°		Y	X
L52	-25 650.014	3 788 492.533		R52	- 25 808.578	3 788 460.933
L53	-25 693.156	3 788 470.074		R53	-25 872.172	3 788 422.848
L54	- 25 794.704	3 788 383.945		R54	-25 939.184	3 788 397.434
L55	-25 788.110	3 788 358.005		R55	-25 985.035	3 788 389.771
L56	- 25 809.624	3 788 345.310		R56	-26 023.950	3 788 385.736
L57	- 25 828.892	3 788 364.730		R57	- 26 047.328	3 788 389.424
L58	-25 916.774	3 788 369.279		R58	-26 091.740	3 788 385.292
L59	- 26 003.480	3 788 349.408		R59	-26 143.171	3 788 391.839
L60	- 26 086.284	3 788 350.578		R60	-26 223.214	3 788 415.891
L61	- 26 096.269	3 788 335.858		R61	- 26 275.858	3 788 437.834
L62	-26 107.141	3 788 338.297		R62	-26 589.150	3 788 565.528
L63	-26 107.285	3 788 351.012		R63	-26 654.792	3 788 592.181
L64	-26 156.996	3 788 360.755		R64	- 26 800.384	3 788 651.295
L65	-26 224.391	3 788 382.745		R65	-26 853.926	3 788 673.035
L66	-26 501.894	3 788 493.587		R66	-26 890.288	3 788 685.207
L67	-26 634.607	3 788 535.808		R67	- 26 963.735	3 788 694.966
L68	- 26 707.202	3 788 565.454		R68	-27 036.254	3 788 700.567
L69	- 26 773.230	3 788 592.420		R69	-27 095.311	3 788 698.289
L70	- 26 868.057	3 788 631.146		R70	-27 180.708	3 788 682.468
L71	-26 984.127	3 788 657.426		R71	-27 229.096	3 788 693.517
L72	-27 124.659	3 788 649.049		R72	-27 258.156	3 788 687.154
L73	-27 218.511	3 788 627.043		R73	-27 318.630	3 788 638.382
L74	-27 504.149	3 788 531.164		R74	-27 610.604	3 788 540.911
L75	-27 760.122	3 788 445.683		R75	-28 009.338	3 788 407.798
L76	- 27 807.827	3 788 432.361		R76	-28 143.167	3 788 435.670
L77	-28 120.245	3 788 330.570		R77	-28 198.283	3 788 344.468
L78	- 28 263.224	3 788 219.273		R78	- 28 360.500	3 788 290.221
L79	- 28 328.290	3 788 266.730		R79	-28 699.643	3 788 176.050
L80	-28 643.010	3 788 156.149		R80	- 28 737.269	3 788 156.960
L81	-28 715.267	3 788 125.268		R81	-28 756.054	3 788 147.150
L82	- 28 759.322	3 788 096.621		R82	-28 789.117	3 788 127.388
L83	- 28 843.977	3 788 041.525		R83	- 29 333.666	3 787 746.343
L84	-29 071.297	3 787 885.296		R84	- 29 423.859	3 787 673.472
L85	- 29 072.081	3 787 875.645		R85	- 29 467.390	3 787 627.431
L86	- 29 078.526	3 787 871.393		R86	- 29 500.781	3 787 585.054
L87	-29 087.184	3 787 874.634		R87	-29 540.911	3 787 520.820
L88	- 29 274.597	3 787 745.175		R88	-29 585.358	3 787 428.148
L89	-29 312.927	3 787 702.890		R89	-29 626.516	3 787 363.616
L90	-29 409.136	3 787 619.199		R90	-29 707.124	3 787 278.388
L91	- 29 464.288	3 787 551.237		R91	-29 766.830	3 787 241.423
L92	-29 541.649	3 787 414.853		R92	-29 859.141	3 787 200.524
L93	- 29 627.081	3 787 274.139		R93	-29 919.042	3 787 191.023
L94	- 29 708.438	3 787 208.059		R94	-30 050.543	3 787 218.318
L95	- 29 802.446	3 787 160.601		R95	-30 123.754	3 787 243.679
L96	-29 854.413	3 787 144.911		R96	-30 202.064	3 787 270.271
L97	- 29 936.397	3 787 140.766		R97	- 30 273.557	3 787 285.035
L98	- 30 003.242	3 787 150.958		R98	- 30 350.523	3 787 288.403
L99	-30 031.760	3 787 165.589		R99	- 30 398.351	3 787 282.837
L100	-30 114.325	3 787 196.916		R100	- 30 680.982	3 787 236.738
L101	-30 161.941	3 787 212.859		R101	-30 917.371	3 787 195.934
L102	-30 306.119	3 787 243.783		R102	- 30 922.044	3 787 209.195

Vel	8	Van	10	P609/06
Sheet		of		

PADRESERVE KOORDINATIE / ROAD RESERVE COORDINATES

LINKERKANT/LEFTHAND SIDE

REGTERKANT/RIGHTHAND SIDE

	Y	X	WG 19°		Y	X
L103	-30 372,511	3 787 243,358	R193		-30 931,844	3 787 212,728
L104	-30 415,235	3 787 239,098	R194		-30 957,319	3 787 190,938
L105	-30 500,518	3 787 180,151	R195		-30 995,760	3 787 187,040
L106	-30 806,202	3 787 151,034	R196		-31 013,532	3 787 185,238
L107	-30 832,306	3 787 146,408	R197		-31 122,573	3 787 167,569
L108	-30 846,072	3 787 164,824	R198		-31 206,491	3 787 147,731
L109	-31 004,438	3 787 146,591	R199		-31 262,934	3 787 138,817
L110	-31 024,605	3 787 149,269	R110		-31 299,148	3 787 139,955
L111	-31 187,385	3 787 117,489	R111		-31 309,316	3 787 145,424
L112	-31 212,655	3 787 107,000	R112		-31 340,774	3 787 127,277
L113	-31 335,877	3 787 095,869	R113		-31 373,766	3 787 125,819
L114	-31 396,543	3 787 078,077	R114		-31 522,261	3 787 107,875
L115	-31 473,700	3 787 068,036	R115		-31 518,417	3 787 108,864
L116	-31 514,196	3 787 066,090	R116		-31 074,831	3 787 122,506
L117	-31 634,704	3 787 064,558	R117		-32 389,309	3 787 219,928
L118	-31 663,903	3 787 062,533	R118		-32 833,057	3 787 256,550
L119	-31 019,380	3 787 084,471	R119		-32 741,546	3 787 263,080
L120	-32 056,354	3 787 120,119	R120		-32 821,768	3 787 267,052
L121	-32 311,220	3 787 157,580	R121		-32 838,449	3 787 268,107
L122	-32 599,079	3 787 199,453	R122		-33 066,076	3 787 263,243
L123	-32 677,084	3 787 200,257	R123		-33 113,607	3 787 257,749
L124	-32 852,811	3 787 216,406	R124		-33 129,071	3 787 273,874
L125	-33 011,333	3 787 210,122	R125		-33 140,554	3 787 269,825
L126	-33 166,723	3 787 206,087	R126		-33 142,904	3 787 255,219
L127	-33 211,066	3 787 207,885	R127		-33 258,276	3 787 244,091
L128	-33 581,224	3 787 171,531	R128		-34 287,603	3 787 145,537
L129	-34 302,248	3 787 102,630	R129		-34 426,602	3 787 132,228
L130	-34 444,857	3 787 089,904	R130		-34 958,936	3 787 081,332
L131	-34 467,817	3 787 083,074	R131		-35 036,416	3 787 072,209
L132	-34 907,801	3 787 038,990	R132		-35 246,225	3 787 036,552
L133	-35 070,217	3 787 019,732	R133		-35 732,029	3 786 934,046
L134	-35 180,435	3 787 004,167	R134		-35 878,928	3 786 902,627
L135	-35 326,360	3 786 971,413	R135		-35 893,261	3 786 892,486
L136	-35 698,605	3 786 893,617	R136		-35 911,593	3 786 900,556
L137	-35 845,456	3 786 860,338	R137		-35 947,672	3 786 905,086
L138	-35 870,125	3 786 853,678	R138		-36 121,855	3 786 897,620
L139	-35 954,780	3 786 841,729	R139		-36 258,990	3 786 929,424
L140	-35 960,439	3 786 834,048	R140		-36 393,754	3 786 980,155
L141	-35 985,980	3 786 839,983	R141		-36 483,872	3 787 025,094
L142	-36 037,062	3 786 843,296	R142		-36 487,609	3 787 029,453
L143	-36 137,081	3 786 851,818	R143		-36 496,288	3 787 030,385
L144	-36 143,271	3 786 851,576	R144		-36 565,962	3 787 079,287
L145	-36 228,739	3 786 872,790	R145		-36 564,958	3 787 080,026
L146	-36 339,620	3 786 900,572	R146		-36 575,876	3 787 087,686
L147	-36 477,662	3 786 953,553	R147		-36 593,705	3 787 100,195
L148	-36 547,846	3 786 993,774	R148		-36 602,835	3 787 108,489
L149	-36 600,642	3 787 033,404	R149		-36 702,566	3 787 182,085
L150	-36 620,472	3 787 048,741	R150		-36 729,075	3 787 204,364
L151	-36 649,630	3 787 072,563	R151		-36 769,656	3 787 246,748
L152	-36 726,741	3 787 145,776	R152		-36 804,656	3 787 296,614
L153	-36 754,055	3 787 164,264	R153		-36 836,184	3 787 369,357

Vel	9	Wam	10	RE609706
Best		af		

PADRESERVE KOORDINATE / ROADRESERVE COORDINATES		RECTERKANT/RIGHT HAND SIDE	
LINKERKANT/LEFT HAND SIDE	X	WG 19 <sup>o</sup>	Y
L154	3 787 248,779	R154	336 866,220
L155	3 787 249,889	R155	336 877,062
L156	3 787 250,999	R156	336 889,734
L157	3 787 252,109	R157	336 902,406
L158	3 787 253,219	R158	336 915,078
L159	3 787 254,329	R159	336 927,750
L160	3 787 255,439	R160	336 940,422
L161	3 787 256,549	R161	336 953,094
L162	3 787 257,659	R162	336 965,766
L163	3 787 258,769	R163	336 978,438
L164	3 787 259,879	R164	336 991,110
L165	3 787 260,989	R165	337 003,782
L166	3 787 262,099	R166	337 016,454
L167	3 787 263,209	R167	337 029,126
L168	3 787 264,319	R168	337 041,798
L169	3 787 265,429	R169	337 054,470
L170	3 787 266,539	R170	337 067,142
L171	3 787 267,649	R171	337 079,814
L172	3 787 268,759	R172	337 092,486
L173	3 787 269,869	R173	337 105,158
L174	3 787 270,979	R174	337 117,830
L175	3 787 272,089	R175	337 130,502
L176	3 787 273,199	R176	337 143,174
L177	3 787 274,309	R177	337 155,846
L178	3 787 275,419	R178	337 168,518
L179	3 787 276,529	R179	337 181,190
L180	3 787 277,639	R180	337 193,862
L181	3 787 278,749	R181	337 206,534
L182	3 787 279,859	R182	337 219,206
L183	3 787 280,969	R183	337 231,878
L184	3 787 282,079	R184	337 244,550
L185	3 787 283,189	R185	337 257,222
L186	3 787 284,299	R186	337 269,894
L187	3 787 285,409	R187	337 282,566
L188	3 787 286,519	R188	337 295,238
L189	3 787 287,629	R189	337 307,910
L190	3 787 288,739	R190	337 320,582
L191	3 787 289,849	R191	337 333,254

**NOTICE TO:**

**SUBSCRIBERS**

**OF**

**GOVERNMENT GAZETTES**

Subscribers who have previously arranged to collect their weekly publications of ~~Government Gazettes~~ from the Government Printing Works, in the Masada Building, are hereby requested to collect their publications from the Old Government Printing Works Building at the Security Officer's Bay at the Proes Street entrance, with effect from the 16th of October 2006.

We look forward to your ongoing support

Contact Person: **Montjane M. Z. (Mr)**

Mobile Phone: 083-640 6121..

Telephone: (012) 334-4653.

Printed by and obtainable from the Government Printer, Bosman Street, Private Bag X85, Pretoria, 0001  
Publications: Tel: (012) 334-4508, 334-4509, 334-4510  
Advertisements: Tel: (012) 334-4673, 334-4674, 334-4504  
Subscriptions: Tel: (012) 334-4735, 334-4736, 334-4737  
Cape Town Branch: Tel: (021) 465-7531

Gedruk deur en verkrygbaar by die Staatsdrukker, Bosmanstraat, Privaatsak X85, Pretoria, 0001  
Publikasies: Tel: (012) 334-4508, 334-4509, 334-4510  
Advertensies: Tel: (012) 334-4673, 334-4674, 334-4504  
Subskripsies: Tel: (012) 334-4735, 334-4736, 334-4737  
Kaapstad-tak: Tel: (021) 465-7531