

CONTENTS**INHOUD**

<i>No.</i>	<i>Page No.</i>	<i>Gazette No.</i>	<i>No.</i>	<i>Bladsy No.</i>	<i>Koerant No.</i>
GOVERNMENT NOTICE			GOEWERMENTSKENNISGEWING		
Transport, Department of			Vervoer, Departement van		
<i>Government Notice</i>			<i>Goewermentskennisgewing</i>		
979			979		
South African National Roads Agency Limited and the National Roads Act (7/1998): The South African National Roads Agency Limited: Declaration amendment of National Road R61 Section 11	3	31423	Suid-Afrikaanse Nasionale Padagentskap Beperk en die Nasionale Paaie Wet (7/1998): Die Suid-Afrikaanse Nasionale Padagentskap Beperk: Verklaring wysiging van Nasionale Pad R61 Seksie 11..	4	31423

**GOVERNMENT NOTICE
GOEWERMENTSKENNISGEWING**

**DEPARTMENT OF TRANSPORT
DEPARTEMENT VAN VERVOER**

No. 979

22 September 2008

**THE SOUTH AFRICAN NATIONAL ROADS
AGENCY LIMITED**


Registration No: 98/09584/06

DECLARATION AMENDMENT OF NATIONAL ROAD R61 SECTION 11

AMENDMENT OF DECLARATION NO. 1322 OF 1989

By virtue of section 40 (1)(b) of the South African National Roads Agency Limited and the National Roads Act, 1998 (Act No. 7 of 1998), I hereby amend Declaration No. 1322 of 1989 Schedule paragraph 10 by substituting the descriptive section from the Mtamvuna River up to Southbroom, with the subjoined sheets 1 to 16 of Plan No. P630/07.

[National Road R61 Section 11: Mtamvuna River – Southbroom (22.25km)]



MINISTER OF TRANSPORT

No. 979

22 September 2008

**DIE SUID-AFRIKAANSE NASIONALE
PADAGENTSKAP BEPERK**

Registrasie No: 98/09584/06

VERKLARING WYSIGING VAN NASIONALE PAD R61 SEKSIE 11.

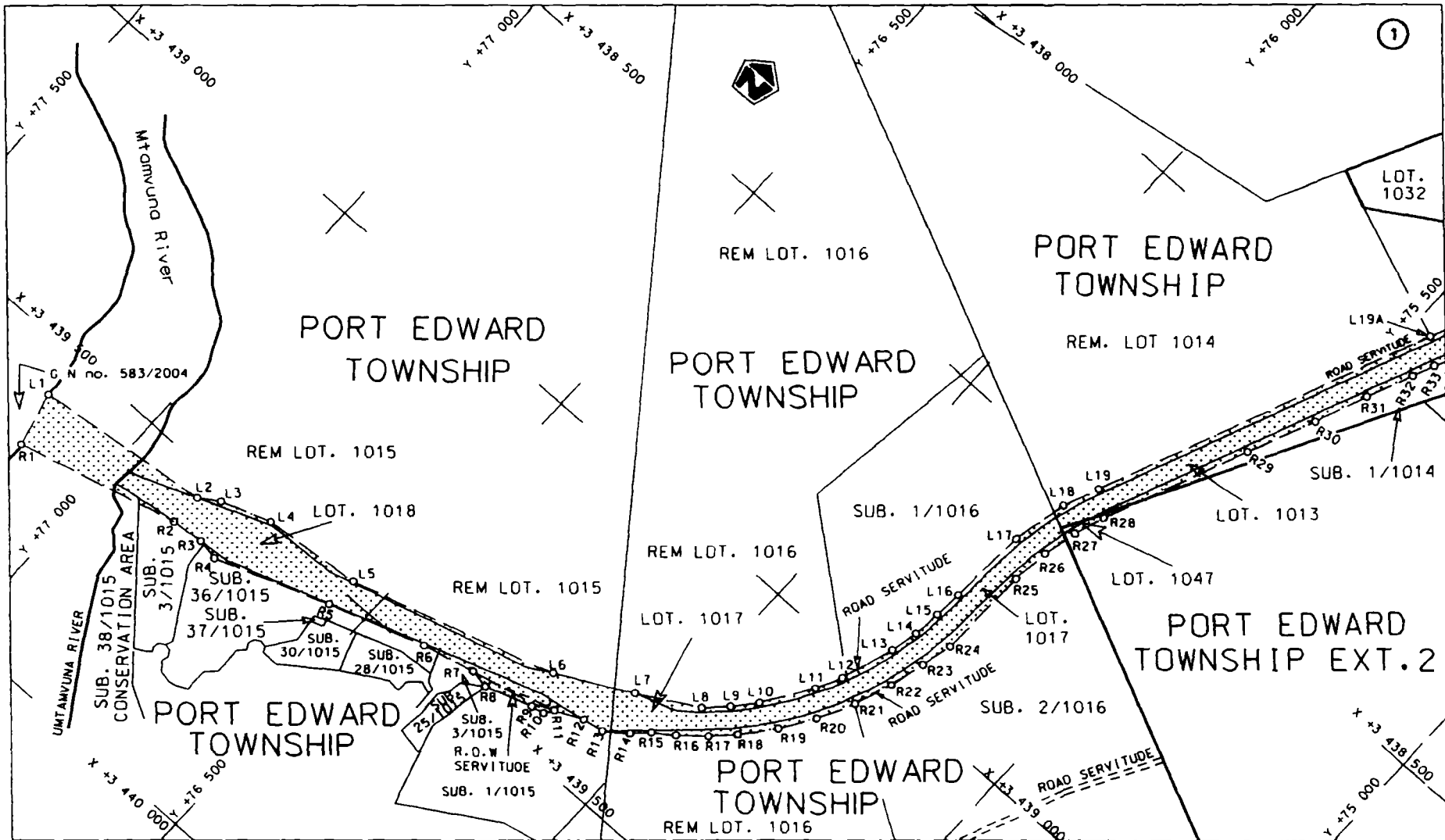
WYSIGING VAN VERKLARING NO. 1322 VAN 1989

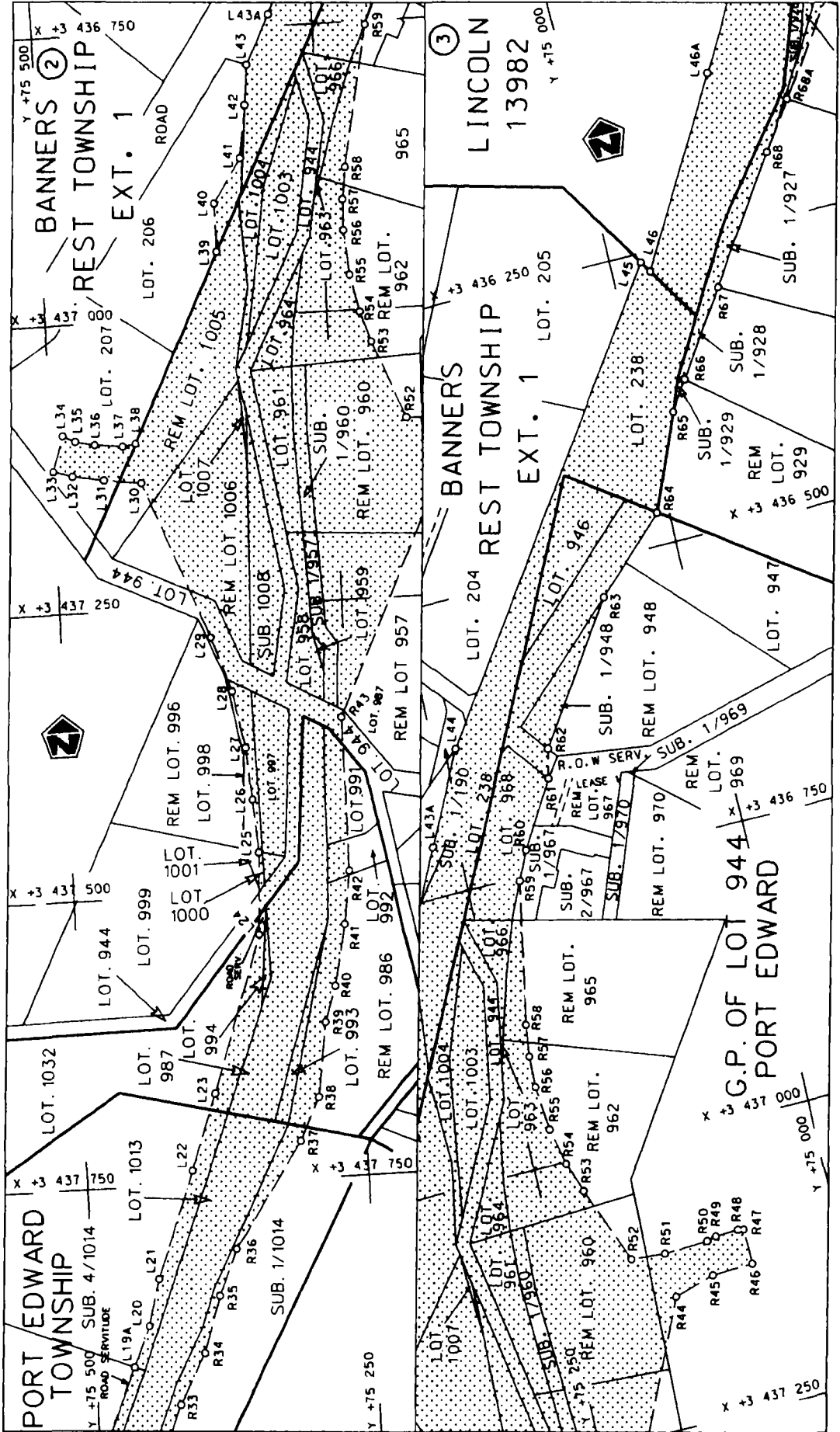
Kragtens Artikel 40(1)(b) van die Suid Afrikaanse Nasionale Padagentskap Beperk en die Nasionale Paaie Wet, 1998 (Wet No.7 van 1998), wysig ek hiermee Verklaring no. 1322 van 1989 Bylae paragraaf 10, deur die beskrywende gedeelte vanaf die Mtamvunarivier tot by Southbroom, te vervang met meegaande velle 1 tot 16 van Plan no. P630/07

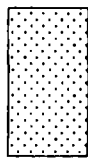
[Nasionale Pad R61 Seksie 11: Mtamvunarivier – Southbroom (22.25km)]

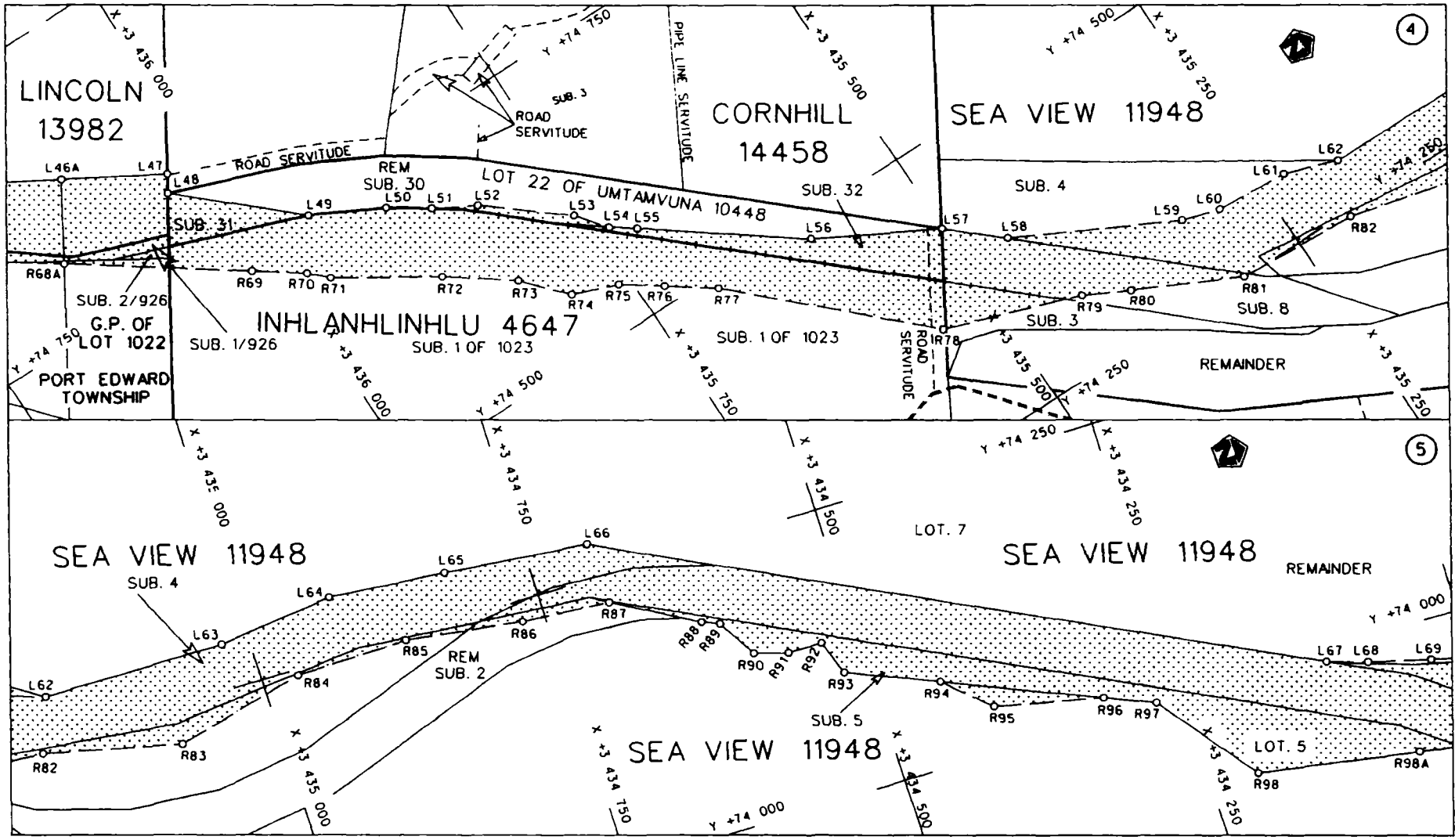


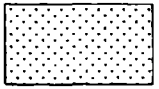
MINISTER VAN VERVOER

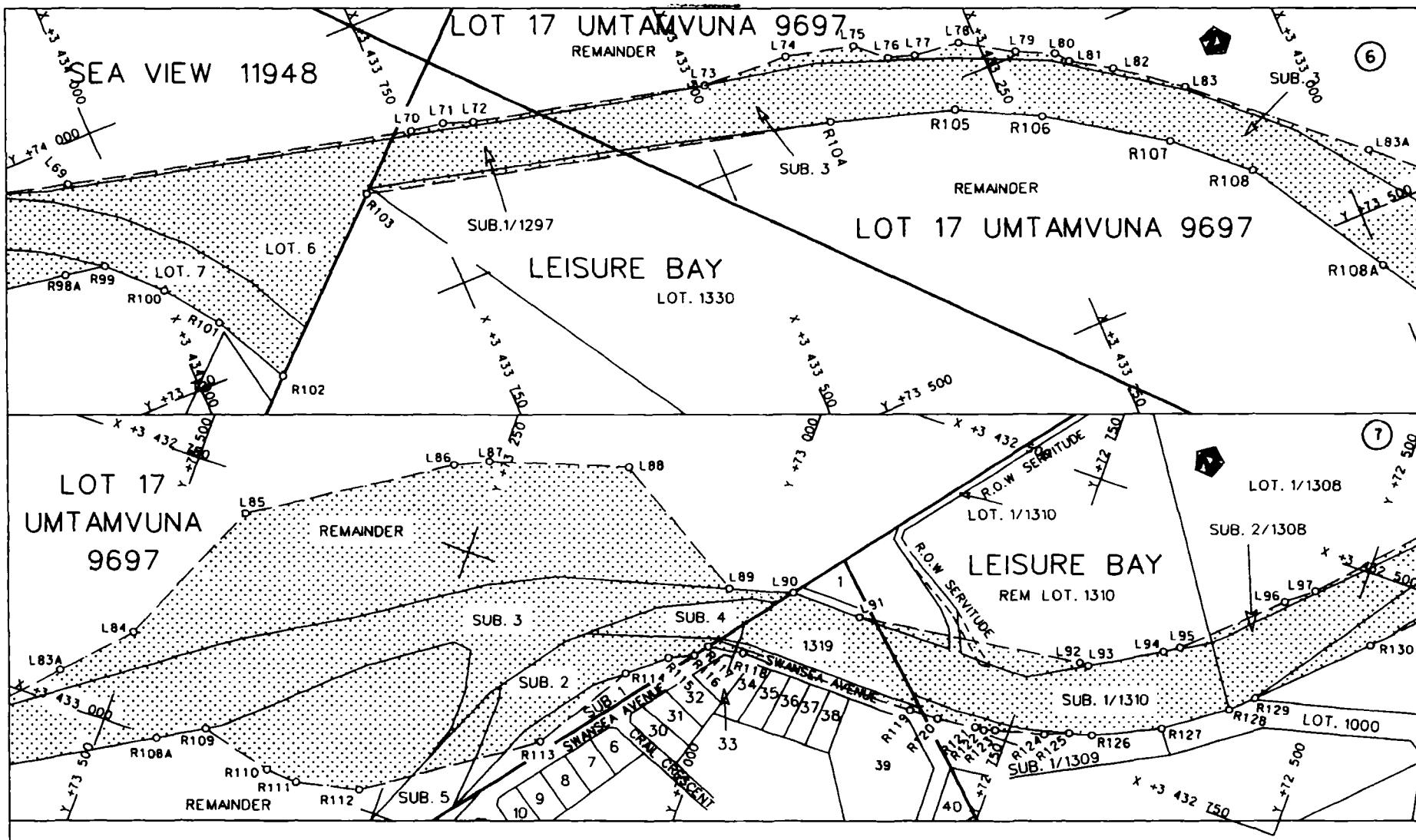




Suid-Afrikaanse Padagentskap Bpk. South African National Roads Agency Ltd.	Die figuur getoon The figure shown		steldie padreserwe voor van 'n gedeelte represents the road reserve of a portion van Nasionale Roete of National Route R61 section 11	Vel Sheet	2 of	van of	16
				P630/07			

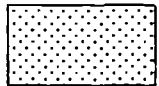


Suid-Afrikaanse Padagentskap Bpk. South African National Roads Agency Ltd.	Die figuur getoon The figure shown	 steldie padreserwe voor van 'n gedeelte represents the road reserve of a portion van Nasionale Raete R61 seksie 11 of National Route R61 section 11	Vel Sheet 3 van 16 P630/07
---	---------------------------------------	--	-------------------------------



Suid-Afrikaanse Padagentskap Bpk.
South African National Roads Agency Ltd.

Die figuur getoon
The figure shown

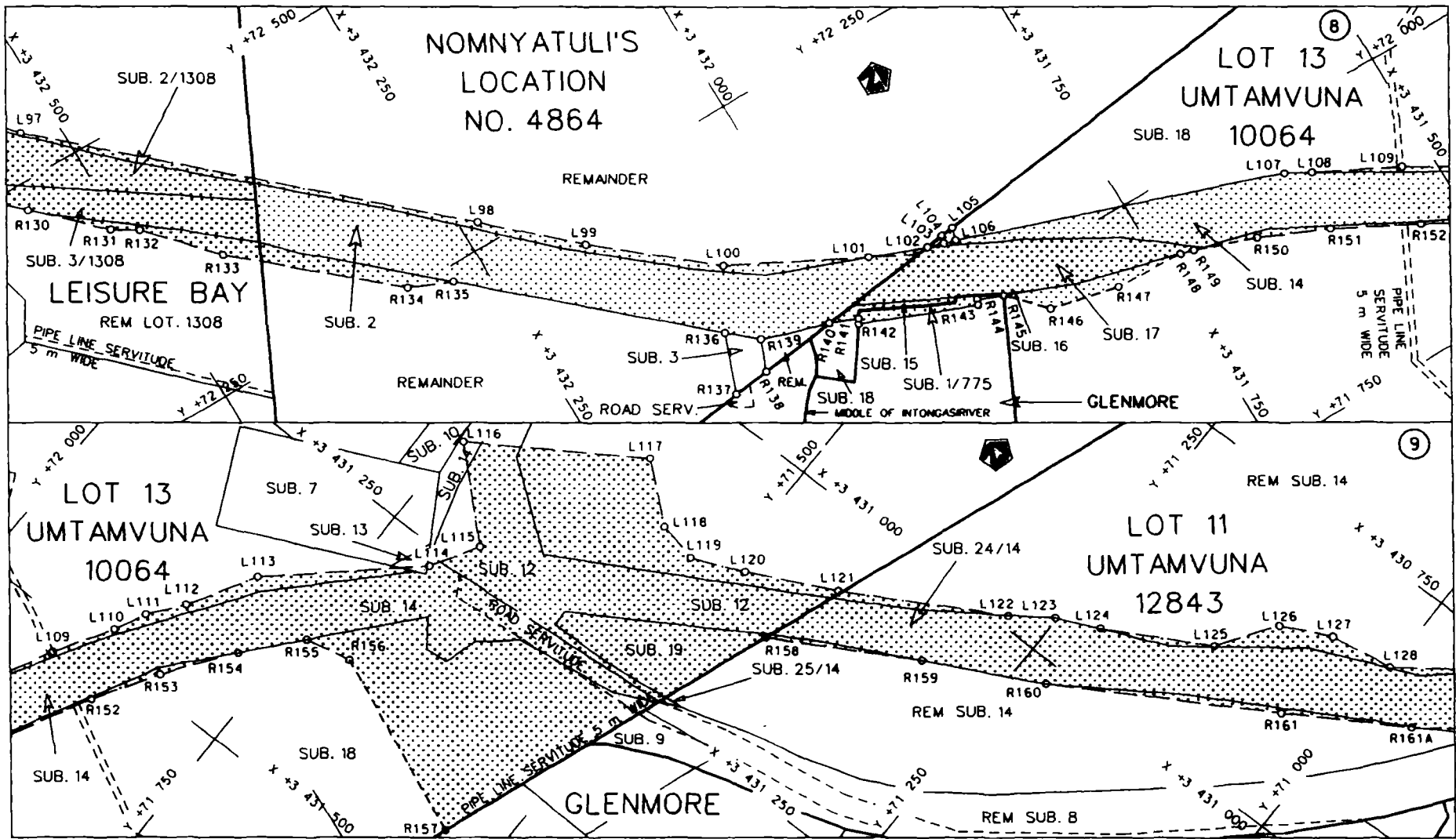


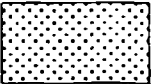
steldie podreserwe voor van 'n gedeelte
represents the road reserve of a portion
van Nasionale Roete
of National Route R61

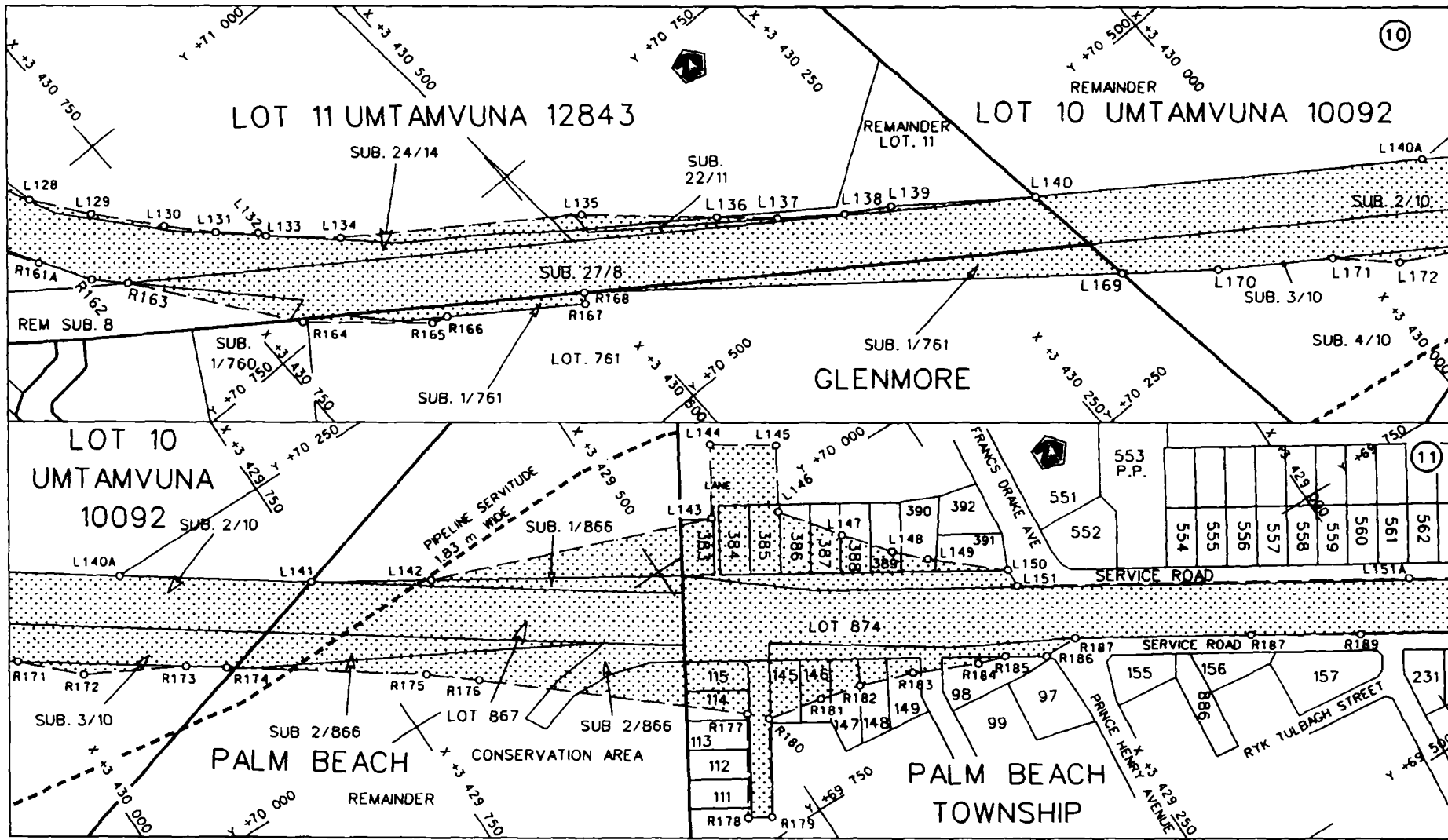
seksie 11

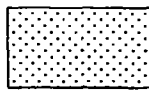
Vel 4 van 16
Sheet 4 of 16

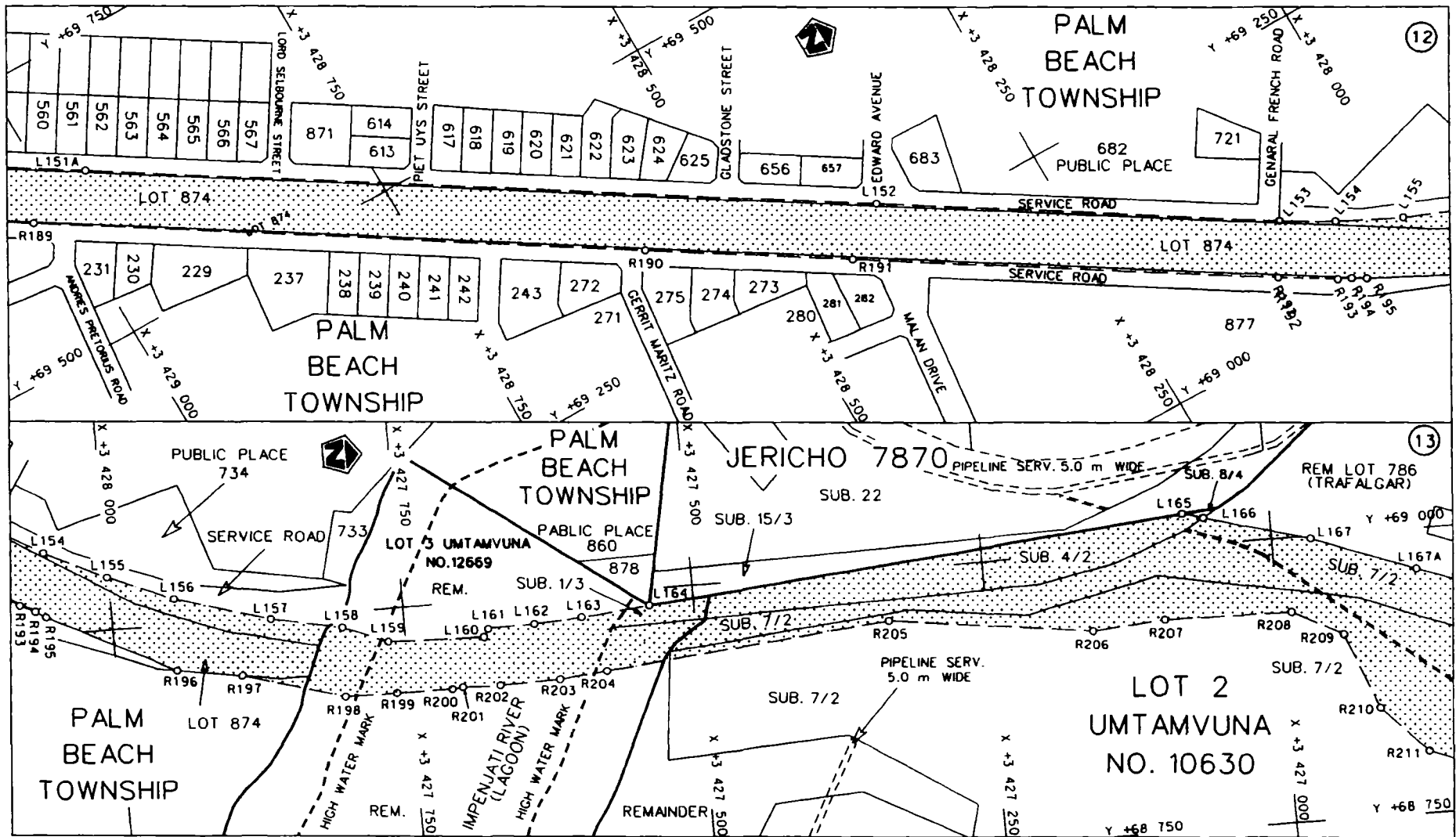
P630/07



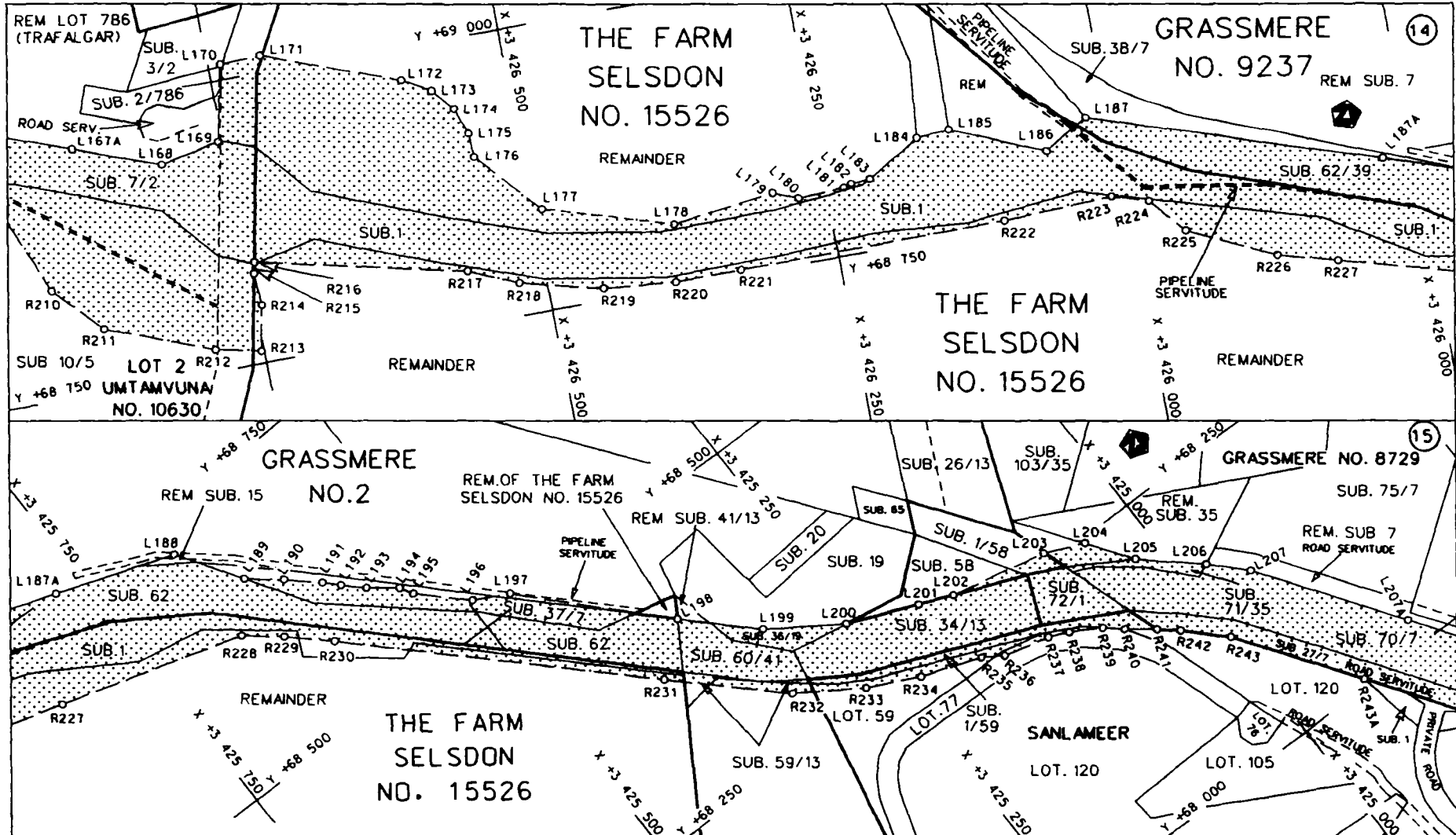
Suid-Afrikaanse Padogentskap Bpk. South African National Roads Agency Ltd.	Die figuur getoon The figure shown		steldie padreserwe voor van 'n gedeelte represents the road reserve of a portion van Nasionale Roete of National Route R61 seksie 11	Vel Sheet 5 van 16 of 16 P630/07
---	---------------------------------------	--	---	---

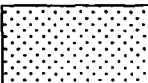


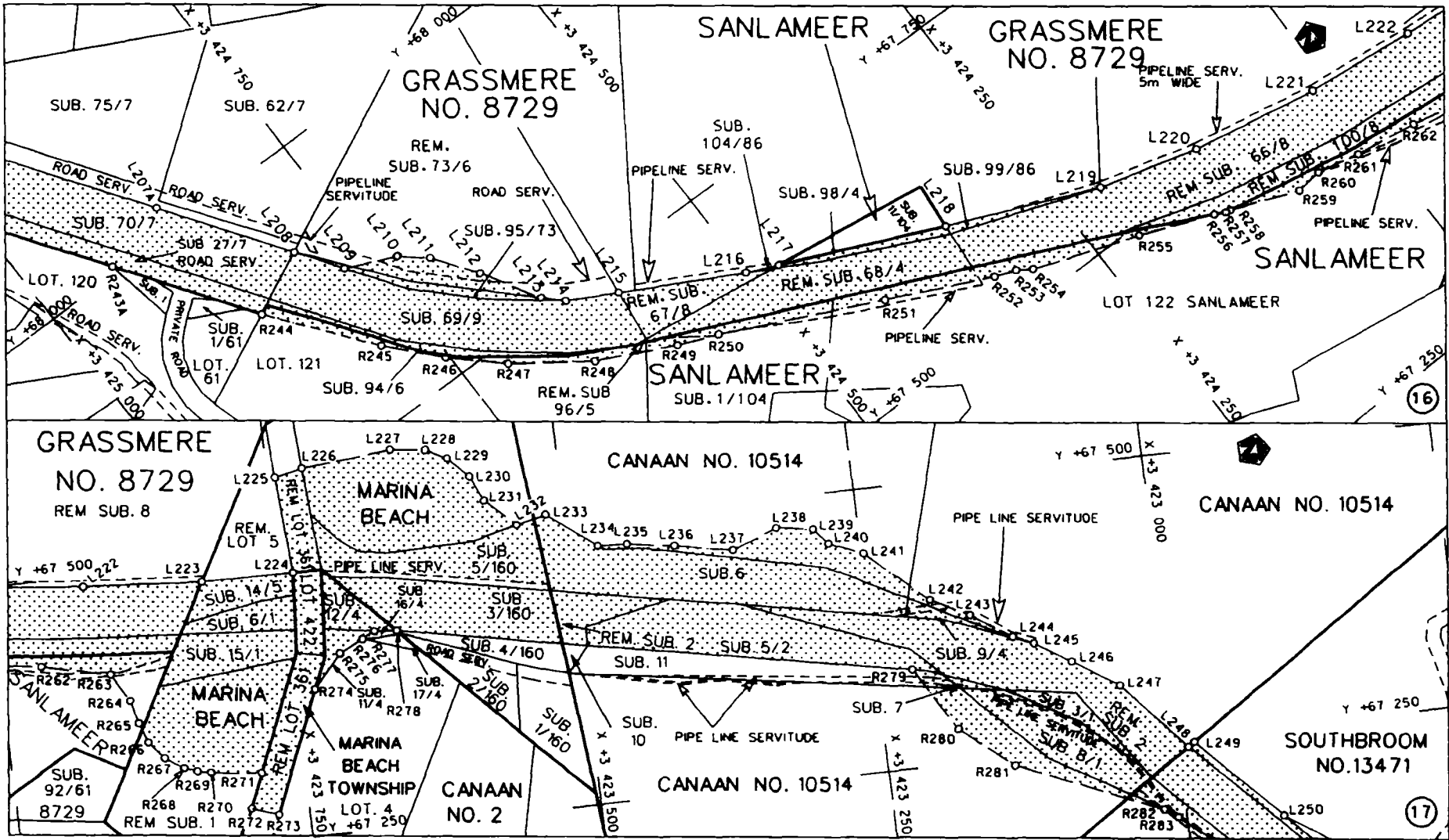
<p>Suid-Afrikaanse Padagentskap Bpk. South African National Roads Agency Ltd.</p>	<p>Die figuur getoon The figure shown</p> 	<p>steldie padreserwe voor van 'n gedeelte represents the road reserve of a portion van Nasionale Roete of National Route R61</p> <p>seksie section 11</p>	<p>Vel Sheet 6 of 16</p> <p>P630/07</p>
---	--	--	---



<p>Suid-Afrikaanse Podogenskop Bpk. South African National Roads Agency Ltd.</p>	<p>Die figuur getoon The figure shown</p>	<p>steldie podreserwe voor van 'n gedeelte represents the road reserve of a portion van Nasionale Roete R61 seksie 11 of National Route R61 section 11</p>	<p>Vel Sheet 7 van of 16</p> <p>P630/07</p>
--	---	--	---



<p>Suid-Afrikaanse Padogentskop Bpk. South African National Roads Agency Ltd.</p>	<p>Die figuur getoon The figure shown</p> 	<p>steldie padreserwe voor van 'n gedeelte represents the road reserve of a portion van Nasionale Roete R61 seksie 11 of National Route R61 section 11</p>	<p>Vel Sheet 8 van 16 P630/07</p>
---	--	--	---



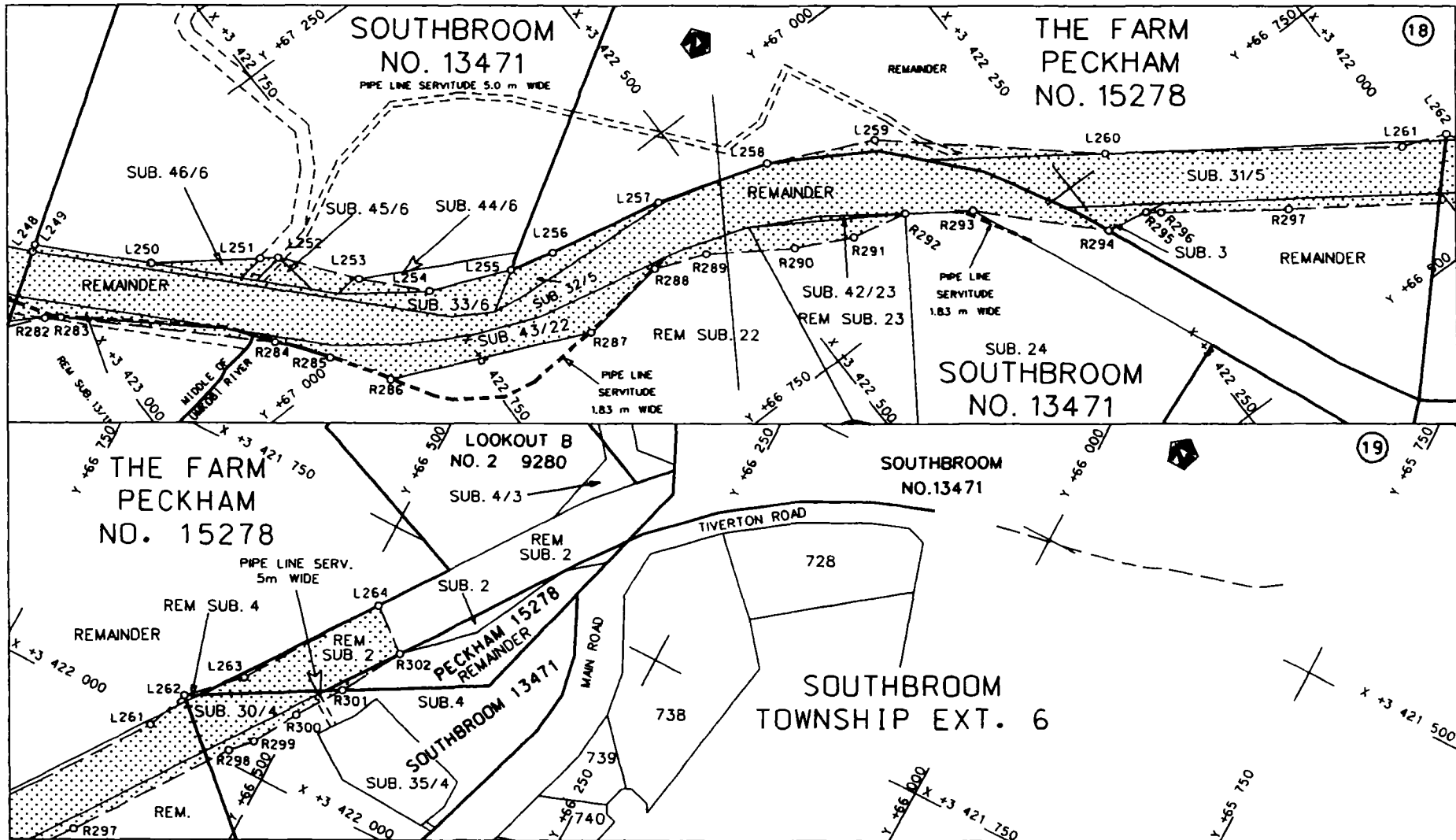
Suid-Afrikaanse Padagentskap Bpk.
South African National Roads Agency Ltd.

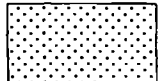
Die figuur getoon
The figure shown



stelsel die padreserwe voor van 'n gedeelte
represents the road reserve of a portion
van Nasionale Roete
of National Route R61 seksie 11

Vel Sheet 9 van of 16
P630/07



<p>Suid-Afrikaanse Padogentskap Bpk. South African National Roads Agency Ltd.</p>	<p>Die figuur getoon The figure shown</p>		<p>Vel Sheet 10 van 16 of of</p>
<p>steldie podreserwe voor van 'n gedeelte represents the road reserve of a portion von Nasionale Roete R61 seksie 11 of National Route R61 section 11</p>			<p>P630/07</p>

PADRESERWE KOÖRDINATE				/	ROAD RESERVE CO-ORDINATES			
LINKERKANT/LEFT HAND SIDE					REGTERKANT/RIGHT HAND SIDE			
	Y	X	WG	31°	Y	X		
L52	74 662.65	3 435 824.28		R52	75 184.79	3 437 095.57		
L53	74 609.92	3 435 759.60		R53	75 211.94	3 437 028.03		
L54	74 587.30	3 435 741.94		R54	75 221.17	3 437 001.76		
L55	74 482.09	3 435 599.97		R55	75 228.54	3 436 969.32		
L56	74 570.17	3 435 718.82		R56	75 232.02	3 436 930.77		
L57	74 428.58	3 435 500.98		R57	75 231.34	3 436 903.84		
L58	74 390.36	3 435 457.69		R58	75 227.97	3 436 875.96		
L59	74 321.28	3 435 323.24		R59	75 203.94	3 436 753.21		
L60	74 311.54	3 435 290.92		R60	75 192.39	3 436 728.61		
L61	74 307.59	3 435 227.57		R61	75 157.94	3 436 672.93		
L62	74 291.56	3 435 181.67		R62	75 152.29	3 436 647.62		
L63	74 290.28	3 435 023.12		R63	75 073.39	3 436 531.19		
L64	74 302.08	3 434 922.93		R64	75 010.33	3 436 471.71		
L65	74 293.03	3 434 821.66		R65	74 976.10	3 436 390.31		
L66	74 280.05	3 434 696.53		R66	74 959.29	3 436 365.43		
L67	73 990.11	3 434 120.95		R67	74 911.60	3 436 294.87		
L68	73 979.41	3 434 087.45		R68	74 841.74	3 436 191.50		
L69	73 965.36	3 434 035.44		R69	74 720.24	3 436 018.91		
L70	73 892.94	3 433 739.19		R70	74 693.04	3 435 980.42		
L71	73 888.67	3 433 710.79		R71	74 678.49	3 435 965.82		
L72	73 879.91	3 433 685.79		R72	74 627.07	3 435 884.52		
L73	73 830.86	3 433 485.11		R73	74 587.97	3 435 831.15		
L74	73 827.23	3 433 410.44		R74	74 553.11	3 435 799.63		
L75	73 813.03	3 433 351.51		R75	74 538.59	3 435 760.99		
L76	73 791.55	3 433 327.67		R76	74 515.56	3 435 728.29		
L77	73 784.47	3 433 305.45		R77	74 488.78	3 435 690.10		
L78	73 780.23	3 433 265.74		R78	74 353.61	3 435 548.91		
L79	73 753.23	3 433 222.54		R79	74 313.62	3 435 432.15		
L80	73 738.37	3 433 191.54		R80	74 294.19	3 435 394.41		
L81	73 727.33	3 433 182.82		R81	74 250.82	3 435 306.14		
L82	73 706.73	3 433 149.52		R82	74 244.44	3 435 199.42		
L83	73 666.50	3 433 097.56		R83	74 216.35	3 435 082.11		
L84	73 502.25	3 432 917.11		R84	74 244.69	3 434 969.11		
L85	73 445.49	3 432 783.31		R85	74 246.44	3 434 871.60		
L86	73 287.74	3 432 680.31		R86	74 231.73	3 434 769.73		
L87	73 259.73	3 432 666.90		R87	74 226.03	3 434 694.14		
L88	73 142.31	3 432 630.03		R88	74 185.13	3 434 623.18		
L89	73 022.90	3 432 702.88		R89	74 178.97	3 434 608.32		
L90	72 969.47	3 432 687.78		R90	74 145.38	3 434 589.19		
L91	72 907.14	3 432 688.57		R91	74 137.12	3 434 560.62		
L92	72 712.47	3 432 661.62		R92	74 136.82	3 434 531.03		
L93	72 704.49	3 432 661.84		R93	74 106.08	3 434 520.17		
L94	72 646.24	3 432 627.78		R94	74 073.47	3 434 444.05		
L95	72 633.92	3 432 619.45		R95	74 038.52	3 434 406.39		
L96	72 560.63	3 432 549.80		R96	74 017.91	3 434 314.36		
L97	72 538.58	3 432 531.40		R97	73 999.97	3 434 272.48		
L98	72 270.65	3 432 234.69		R98	73 914.78	3 434 208.06		
L99	72 206.76	3 432 164.75		R99	73 884.96	3 434 034.18		
L100	72 130.26	3 432 072.61		R100	73 845.01	3 433 994.44		
L101	72 072.82	3 431 961.79		R101	73 799.49	3 433 961.54		
L102	72 054.54	3 431 913.75		R102	73 733.97	3 433 929.03		
				Vel	12	Van	16	P630/07
				Sheet		of		

PADRESERWE KOÖRDINATE				/	ROAD RESERVE CO-ORDINATES			
LINKERKANT/LEFT HAND SIDE					REGTERKANT/RIGHT HAND SIDE			
	Y	X	WG	31°		Y	X	
L103	72 050.19	3 431 900.19			R103	73 855.73	3 433 797.54	
L104	72 056.56	3 431 898.29			R104	73 757.72	3 433 396.45	
L105	72 058.04	3 431 886.87			R105	73 725.78	3 433 291.48	
L106	72 047.17	3 431 890.13			R106	73 690.67	3 433 223.27	
L107	71 953.09	3 431 616.42			R107	73 626.28	3 433 128.31	
L108	71 941.25	3 431 596.12			R108	73 574.16	3 433 072.08	
L109	71 905.97	3 431 526.49			R109	73 413.15	3 432 977.88	
L110	71 876.66	3 431 478.21			R110	73 351.32	3 432 994.07	
L111	71 863.82	3 431 450.98			R111	73 323.32	3 432 996.31	
L112	71 841.89	3 431 422.63			R112	73 268.78	3 432 983.95	
L113	71 809.40	3 431 365.15			R113	73 133.25	3 432 888.99	
L114	71 700.42	3 431 265.41			R114	73 083.49	3 432 805.44	
L115	71 676.71	3 431 225.40			R115	73 052.85	3 432 779.78	
L116	71 744.82	3 431 161.33			R116	73 032.18	3 432 769.95	
L117	71 610.32	3 431 072.18			R117	73 023.35	3 432 758.39	
L118	71 563.19	3 431 112.11			R118	72 993.02	3 432 753.74	
L119	71 529.15	3 431 119.72			R119	72 837.89	3 432 752.58	
L120	71 484.82	3 431 100.36			R120	72 812.69	3 432 751.72	
L121	71 412.20	3 431 063.78			R121	72 778.78	3 432 747.55	
L122	71 288.83	3 430 992.55			R122	72 770.82	3 432 747.54	
L123	71 251.76	3 430 966.68			R123	72 761.50	3 432 744.05	
L124	71 215.58	3 430 950.26			R124	72 719.88	3 432 733.29	
L125	71 129.59	3 430 900.61			R125	72 700.01	3 432 724.83	
L126	71 096.84	3 430 852.33			R126	72 680.63	3 432 719.85	
L127	71 054.64	3 430 831.12			R127	72 624.63	3 432 693.44	
L128	70 999.93	3 430 821.49			R128	72 574.60	3 432 656.97	
L129	70 956.02	3 430 789.10			R129	72 556.69	3 432 640.01	
L130	70 907.26	3 430 748.54			R130	72 477.26	3 432 561.02	
L131	70 874.82	3 430 718.52			R131	72 425.84	3 432 508.63	
L132	70 850.96	3 430 691.57			R132	72 412.96	3 432 487.33	
L133	70 844.65	3 430 688.07			R133	72 357.84	3 432 437.10	
L134	70 801.91	3 430 640.17			R134	72 252.49	3 432 315.89	
L135	70 682.80	3 430 469.59			R135	72 236.88	3 432 279.54	
L136	70 605.41	3 430 382.57			R136	72 079.19	3 432 101.96	
L137	70 571.12	3 430 344.07			R137	72 027.33	3 432 121.61	
L138	70 536.60	3 430 297.12			R138	72 031.52	3 432 089.54	
L139	70 515.78	3 430 262.27			R139	72 058.61	3 432 078.78	
L140	70 441.34	3 430 163.31			R140	72 040.52	3 432 020.76	
L141	70 155.93	3 429 755.19			R141	72 031.11	3 431 996.76	
L142	70 101.30	3 429 668.12			R142	72 026.94	3 431 999.66	
L143	70 014.36	3 429 436.10			R143	71 988.86	3 431 902.82	
L144	70 069.14	3 429 401.62			R144	71 993.43	3 431 901.01	
L145	70 037.85	3 429 355.02			R145	71 985.00	3 431 879.50	
L146	69 988.45	3 429 385.38			R146	71 954.30	3 431 851.20	
L147	69 941.56	3 429 350.80			R147	71 940.80	3 431 791.08	
L148	69 905.64	3 429 322.58			R148	71 938.02	3 431 730.06	
L149	69 883.78	3 429 300.83			R149	71 935.00	3 431 718.43	
L150	69 837.74	3 429 248.53			R150	71 915.98	3 431 666.12	
L151	69 821.80	3 429 249.53			R151	71 890.62	3 431 607.97	
L152	69 281.41	3 428 388.76			R152	71 854.56	3 431 538.72	
L153	69 096.29	3 428 095.21			R153	71 821.40	3 431 484.56	

Vel	13	Van	16	P630/07
Sheet		of		

PADRESERWE KOÖRDINATE				/	ROAD RESERVE CO-ORDINATES			
LINKERKANT/LEFT HAND SIDE					REGTERKANT/RIGHT HAND SIDE			
	Y	X	WG	31°	Y	X		
L154	69 071.93	3 428	053.28	R154	71 781.23	3 431	428.05	
L155	69 046.12	3 428	001.15	R155	71 742.44	3 431	382.34	
L156	69 023.04	3 427	944.95	R156	71 702.96	3 431	373.54	
L157	68 998.72	3 427	863.85	R157	71 546.30	3 431	439.86	
L158	68 986.30	3 427	803.37	R158	71 435.55	3 431	135.00	
L159	68 971.12	3 427	765.08	R159	71 318.06	3 431	067.17	
L160	68 968.77	3 427	682.41	R160	71 222.32	3 431	017.35	
L161	68 975.54	3 427	678.06	R161	71 048.36	3 430	911.38	
L162	68 976.28	3 427	637.85	R162	70 912.48	3 430	826.36	
L163	68 979.14	3 427	597.26	R163	70 890.01	3 430	804.72	
L164	68 984.50	3 427	538.36	R164	70 767.06	3 430	713.42	
L165	69 028.57	3 427	075.16	R165	70 694.26	3 430	629.23	
L166	69 023.48	3 427	057.24	R166	70 689.80	3 430	615.68	
L167	68 997.70	3 426	966.50	R167	70 621.56	3 430	518.09	
L168	68 936.71	3 426	804.69	R168	70 629.76	3 430	512.35	
L169	68 947.20	3 426	753.85	R169	70 342.53	3 430	150.67	
L170	69 013.75	3 426	739.48	R170	70 291.09	3 430	085.90	
L171	69 015.11	3 426	704.54	R171	70 234.58	3 430	004.56	
L172	68 971.59	3 426	589.42	R172	70 194.13	3 429	963.23	
L173	68 957.68	3 426	565.76	R173	70 151.94	3 429	885.61	
L174	68 938.77	3 426	550.36	R174	70 132.17	3 429	857.33	
L175	68 915.27	3 426	541.92	R175	70 033.91	3 429	717.18	
L176	68 894.37	3 426	541.28	R176	70 005.13	3 429	682.14	
L177	68 838.69	3 426	492.23	R177	69 854.59	3 429	505.27	
L178	68 804.52	3 426	383.13	R178	69 777.74	3 429	555.08	
L179	68 815.85	3 426	295.24	R179	69 767.28	3 429	537.71	
L180	68 807.27	3 426	274.30	R180	69 840.64	3 429	492.48	
L181	68 808.63	3 426	234.27	R181	69 830.86	3 429	445.87	
L182	68 810.76	3 426	227.32	R182	69 822.30	3 429	411.56	
L183	68 812.32	3 426	210.59	R183	69 807.02	3 429	366.94	
L184	68 840.01	3 426	164.39	R184	69 782.77	3 429	315.39	
L185	68 842.13	3 426	136.37	R185	69 775.38	3 429	292.50	
L186	68 808.69	3 426	057.59	R186	69 756.65	3 429	262.73	
L187	68 830.77	3 426	019.36	R187	69 756.39	3 429	233.74	
L188	68 713.38	3 425	673.65	R188	69 675.90	3 429	105.77	
L189	68 660.24	3 425	639.35	R189	69 624.70	3 429	026.82	
L190	68 638.74	3 425	612.71	R190	69 344.30	3 428	582.22	
L191	68 616.44	3 425	588.06	R191	69 249.18	3 428	431.39	
L192	68 605.13	3 425	576.68	R192	69 053.83	3 428	121.61	
L193	68 589.96	3 425	561.09	R193	69 027.27	3 428	077.59	
L194	68 572.70	3 425	538.49	R194	69 021.07	3 428	064.78	
L195	68 561.74	3 425	532.20	R195	69 015.49	3 428	055.89	
L196	68 526.29	3 425	495.76	R196	68 960.11	3 427	947.42	
L197	68 511.23	3 425	466.36	R197	68 951.14	3 427	892.46	
L198	68 406.11	3 425	365.86	R198	68 925.52	3 427	805.66	
L199	68 354.48	3 425	313.82	R199	68 925.12	3 427	761.27	
L200	68 314.44	3 425	253.93	R200	68 925.23	3 427	713.56	
L201	68 289.78	3 425	193.19	R201	68 926.11	3 427	704.31	
L202	68 278.73	3 425	165.97	R202	68 924.90	3 427	671.62	
L203	68 260.57	3 425	082.18	R203	68 926.45	3 427	619.93	
L204	68 245.96	3 425	048.86	R204	68 930.57	3 427	579.50	

Vel	14	Van	16	P630/07
Sheet		of		

PADRESERWE KOÖRDINATE				ROAD RESERVE CO-ORDINATES			
LINKERKANT/LEFT HAND SIDE				REGTERKANT/RIGHT HAND SIDE			
	Y	X	WG 31°		Y	X	
L205	68 208.51	3 425 022.70		R205	68 954.97	3 427 334.25	
L206	68 168.20	3 424 977.28		R206	68 931.59	3 427 159.70	
L207	68 140.37	3 424 950.54		R207	68 936.89	3 427 097.14	
L208	67 921.11	3 424 799.74		R208	68 934.55	3 426 988.20	
L209	67 883.64	3 424 773.94		R209	68 911.66	3 426 944.66	
L210	67 864.69	3 424 731.73		R210	68 845.21	3 426 918.65	
L211	67 846.37	3 424 710.09		R211	68 804.40	3 426 880.60	
L212	67 809.91	3 424 683.69		R212	68 769.84	3 426 792.32	
L213	67 760.59	3 424 654.73		R213	68 760.83	3 426 752.53	
L214	67 745.69	3 424 639.65		R214	68 800.16	3 426 744.36	
L215	67 723.78	3 424 598.90		R215	68 828.50	3 426 745.64	
L216	67 671.24	3 424 501.33		R216	68 838.12	3 426 743.64	
L217	67 659.60	3 424 475.04		R217	68 796.83	3 426 565.52	
L218	67 599.49	3 424 339.31		R218	68 778.39	3 426 523.25	
L219	67 545.56	3 424 212.44		R219	68 760.37	3 426 453.30	
L220	67 522.21	3 424 126.27		R220	68 754.51	3 426 391.34	
L221	67 501.13	3 424 015.31		R221	68 754.51	3 426 334.71	
L222	67 491.26	3 423 919.15		R222	68 754.98	3 426 104.68	
L223	67 483.76	3 423 817.30		R223	68 758.86	3 426 010.40	
L224	67 482.97	3 423 738.32		R224	68 749.02	3 425 979.89	
L225	67 567.59	3 423 743.44		R225	68 717.56	3 425 953.59	
L226	67 572.92	3 423 719.39		R226	68 682.00	3 425 881.03	
L227	67 580.40	3 423 642.43		R227	68 667.43	3 425 830.26	
L228	67 576.88	3 423 612.75		R228	68 621.98	3 425 671.85	
L229	67 567.52	3 423 594.73		R229	68 598.74	3 425 643.46	
L230	67 549.50	3 423 577.37		R230	68 569.15	3 425 611.40	
L231	67 526.86	3 423 567.54		R231	68 370.92	3 425 407.96	
L232	67 502.48	3 423 541.23		R232	68 294.40	3 425 328.21	
L233	67 508.65	3 423 516.02		R233	68 259.55	3 425 274.84	
L234	67 476.29	3 423 474.65		R234	68 238.82	3 425 231.62	
L235	67 474.91	3 423 449.68		R235	68 220.61	3 425 180.31	
L236	67 468.55	3 423 409.19		R236	68 209.58	3 425 163.65	
L237	67 458.75	3 423 359.74		R237	68 199.95	3 425 124.44	
L238	67 473.93	3 423 320.40		R238	68 192.75	3 425 107.41	
L239	67 468.93	3 423 288.61		R239	68 177.98	3 425 082.27	
L240	67 454.98	3 423 277.12		R240	68 165.58	3 425 067.98	
L241	67 443.10	3 423 248.11		R241	68 148.48	3 425 045.99	
L242	67 395.77	3 423 196.91		R242	68 135.27	3 425 030.74	
L243	67 378.33	3 423 164.49		R243	68 104.60	3 424 999.93	
L244	67 355.32	3 423 129.96		R244	67 894.82	3 424 855.54	
L245	67 347.30	3 423 112.55		R245	67 810.74	3 424 790.28	
L246	67 327.83	3 423 082.58		R246	67 769.14	3 424 752.89	
L247	67 302.35	3 423 043.56		R247	67 732.15	3 424 712.97	
L248	67 241.91	3 422 991.44		R248	67 688.90	3 424 652.11	
L249	67 245.44	3 422 986.34		R249	67 656.54	3 424 586.83	
L250	67 172.55	3 422 917.21		R250	67 642.67	3 424 552.93	
L251	67 119.67	3 422 839.92		R251	67 579.65	3 424 420.22	
L252	67 111.05	3 422 827.05		R252	67 538.87	3 424 333.07	
L253	67 054.82	3 422 784.01		R253	67 531.91	3 424 315.22	
L254	67 010.20	3 422 742.13		R254	67 523.94	3 424 302.98	
L255	66 982.42	3 422 675.09		R255	67 491.63	3 424 211.83	

Vel	15	Van	16	P630/07
Sheet		of		

PADRESERWE KOÖRDINATE				/			ROAD RESERVE CO-ORDINATES		
LINKERKANT/LEFT HAND SIDE				REGTERKANT/RIGHT HAND SIDE					
	Y	X	WG	31°	Y	X			
L256	66 972.70	3 422	637.14	R256	67 467.16	3 424	149.01		
L257	66 953.02	3 422	538.62	R257	67 462.81	3 424	140.05		
L258	66 924.31	3 422	443.54	R258	67 462.00	3 424	135.78		
L259	66 884.28	3 422	357.44	R259	67 439.39	3 424	077.74		
L260	66 755.82	3 422	208.09	R260	67 441.57	3 424	054.88		
L261	66 605.86	3 422	001.92	R261	67 433.77	3 424	017.73		
L262	66 591.88	3 421	965.32	R262	67 425.44	3 423	963.56		
L263	66 553.96	3 421	927.44	R263	67 411.87	3 423	905.76		
L264	66 481.79	43 421	818.42	R264	67 386.72	3 423	891.57		
				R265	67 366.16	3 423	887.03		
				R266	67 348.73	3 423	880.65		
				R267	67 333.20	3 423	867.99		
				R268	67 322.78	3 423	852.61		
				R269	67 318.41	3 423	841.56		
				R270	67 315.98	3 423	830.10		
				R271	67 310.68	3 423	787.01		
				R272	67 280.66	3 423	799.65		
				R273	67 272.64	3 423	776.62		
				R274	67 378.34	3 423	732.24		
				R275	67 407.53	3 423	706.93		
				R276	67 417.98	3 423	686.28		
				R277	67 423.32	3 423	675.42		
				R278	67 421.60	3 423	656.10		
				R279	67 336.47	3 423	218.89		
				R280	67 280.08	3 423	186.50		
				R281	67 242.62	3 423	141.70		
				R282	67 189.19	3 423	018.67		
				R283	67 181.80	3 423	007.68		
				R284	67 053.75	3 422	874.47		
				R285	67 014.59	3 422	845.20		
				R286	66 968.58	3 422	815.88		
				R287	66 897.64	3 422	653.66		
				R288	66 908.67	3 422	576.42		
				R289	66 892.35	3 422	533.07		
				R290	66 850.74	3 422	469.65		
				R291	66 827.52	3 422	423.32		
				R292	66 817.79	3 422	375.70		
				R293	66 784.62	3 422	328.56		
				R294	66 700.50	3 422	246.55		
				R295	66 693.64	3 422	211.31		
				R296	66 685.56	3 422	201.05		
				R297	66 622.05	3 422	112.78		
				R298	66 536.14	3 421	990.11		
				R299	66 520.71	3 421	973.26		
				R300	66 499.45	3 421	935.95		
				R301	66 474.50	3 421	898.37		
				R302	66 446.09	3 421	847.21		

Vel	16	Van	16	P630/07
Sheet		of		

Printed by and obtainable from the Government Printer, Bosman Street, Private Bag X85, Pretoria, 0001
Publications: Tel: (012) 334-4508, 334-4509, 334-4510
Advertisements: Tel: (012) 334-4673, 334-4674, 334-4504
Subscriptions: Tel: (012) 334-4735, 334-4736, 334-4737
Cape Town Branch: Tel: (021) 465-7531

Gedruk deur en verkrygbaar by die Staatsdrukker, Bosmanstraat, Privaatsak X85, Pretoria, 0001
Publikasies: Tel: (012) 334-4508, 334-4509, 334-4510
Advertensies: Tel: (012) 334-4673, 334-4674, 334-4504
Subskripsies: Tel: (012) 334-4735, 334-4736, 334-4737
Kaapstad-tak: Tel: (021) 465-7531