

**CONTENTS****INHOUD**

<i>No.</i>	<i>Page No.</i>	<i>Gazette No.</i>	<i>No.</i>	<i>Bladsy No.</i>	<i>Koerant No.</i>
<b>GOVERNMENT NOTICE</b>			<b>GOEWERMENTSKENNISGEWING</b>		
<b>Transport, Department of</b>			<b>Vervoer, Departement van</b>		
<i>Government Notice</i>			<i>Goewermentskennisgewing</i>		
1351			1351		
South African National Roads Agency Limited and the National Roads Act (7/1998): The South African National Roads Agency Limited: Declaration amendment of National Road R61 Section 1: Amendment of Declaration No. 545 of 2003 .....	3	31700	Suid-Afrikaanse Nasionale Padagentskap Beperk en die Nasionale Paaie Wet (7/1998): Die Suid-Afrikaanse Nasionale Padagentskap Beperk: Verklaring wysiging van Nasionale Pad R61 Seksie 1: Wysiging van Verklaring No. 545 van 2003 .....	4	31700

---

**GOVERNMENT NOTICE  
GOEWERMENSKENNISGEWING**

---

**DEPARTMENT OF TRANSPORT  
DEPARTEMENT VAN VERVOER**

**No. 1351**

**17 December 2008**

**THE SOUTH AFRICAN NATIONAL ROADS  
AGENCY LIMITED**

Registration No: 98/09584/06

**DECLARATION AMENDMENT OF NATIONAL ROAD R61 SECTION 1**

**AMENDMENT OF DECLARATION NO. 545 OF 2003**

By virtue of section 40 (1)(b) of the South African National Roads Agency Limited and the National Roads Act, 1998 (Act No. 7 of 1998), I hereby amend Declaration No. 545 of 2003, by substituting it, with the subjoined sheets 1 to 21 of Plan No. P695/08.

**(National Road R61 Section 1: Western Cape/Eastern Cape Provincial Border – Aberdeen )**

  
\_\_\_\_\_  
**MINISTER OF TRANSPORT**

No. 1351

17 Desember 2008

**DIE SUID-AFRIKAANSE NASIONALE  
PADAGENTSKAP BEPERK**

Registrasie No: 98/09584/06

**VERKLARING WYSIGING VAN NASIONALE PAD R61 SEKSIE 1**

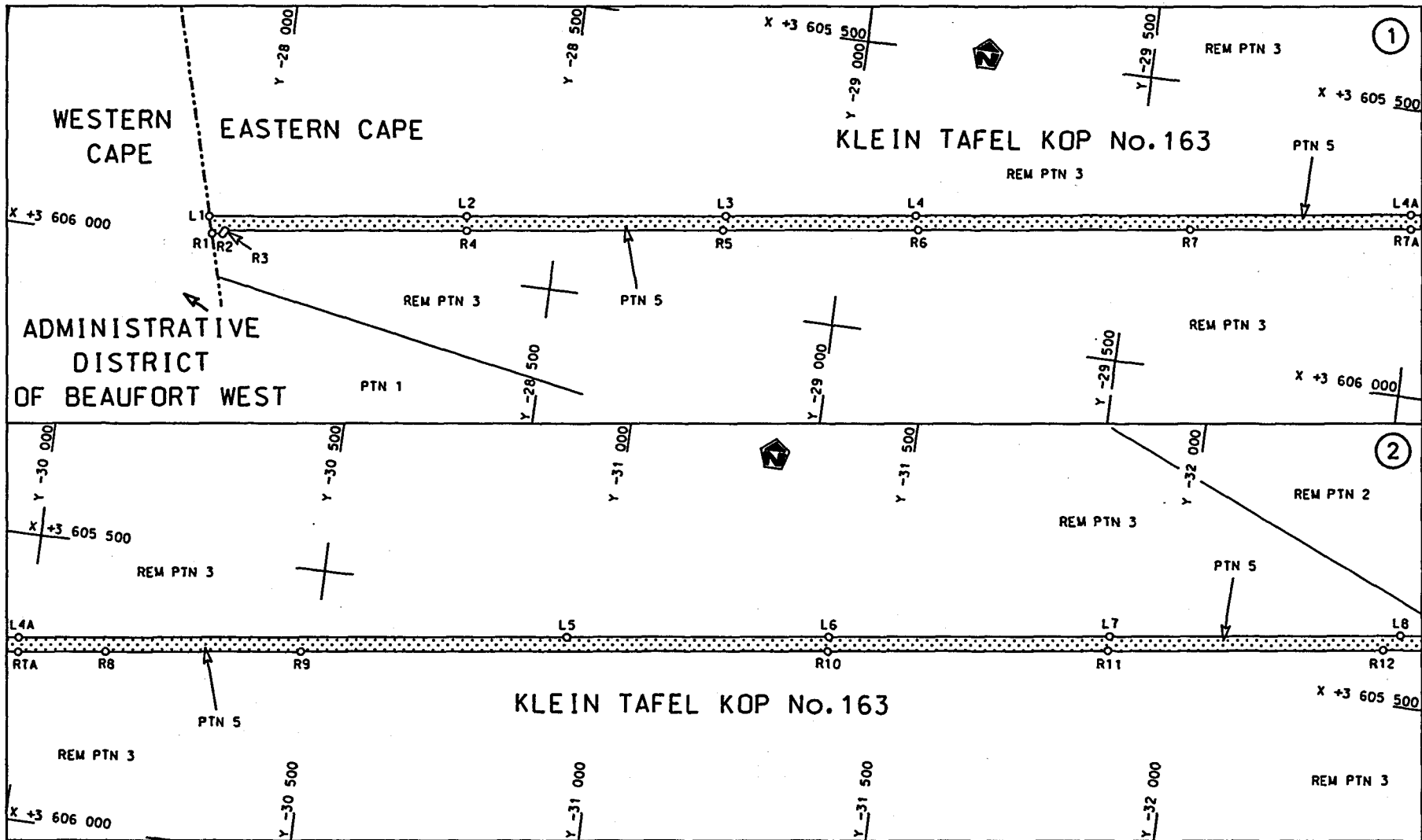
**WYSIGING VAN VERKLARING NO. 545 VAN 2003**

Kragtens Artikel 40(1)(b) van die Suid-Afrikaanse Nasionale Padagentskap Beperk en die Nasionale Paaie Wet, 1998 (Wet No.7 van 1998), wysig ek hiermee Verklaring no. 545 van 2003, deur dit, te vervang met meegaande velle 1 tot 21 van Plan no. P695/08.

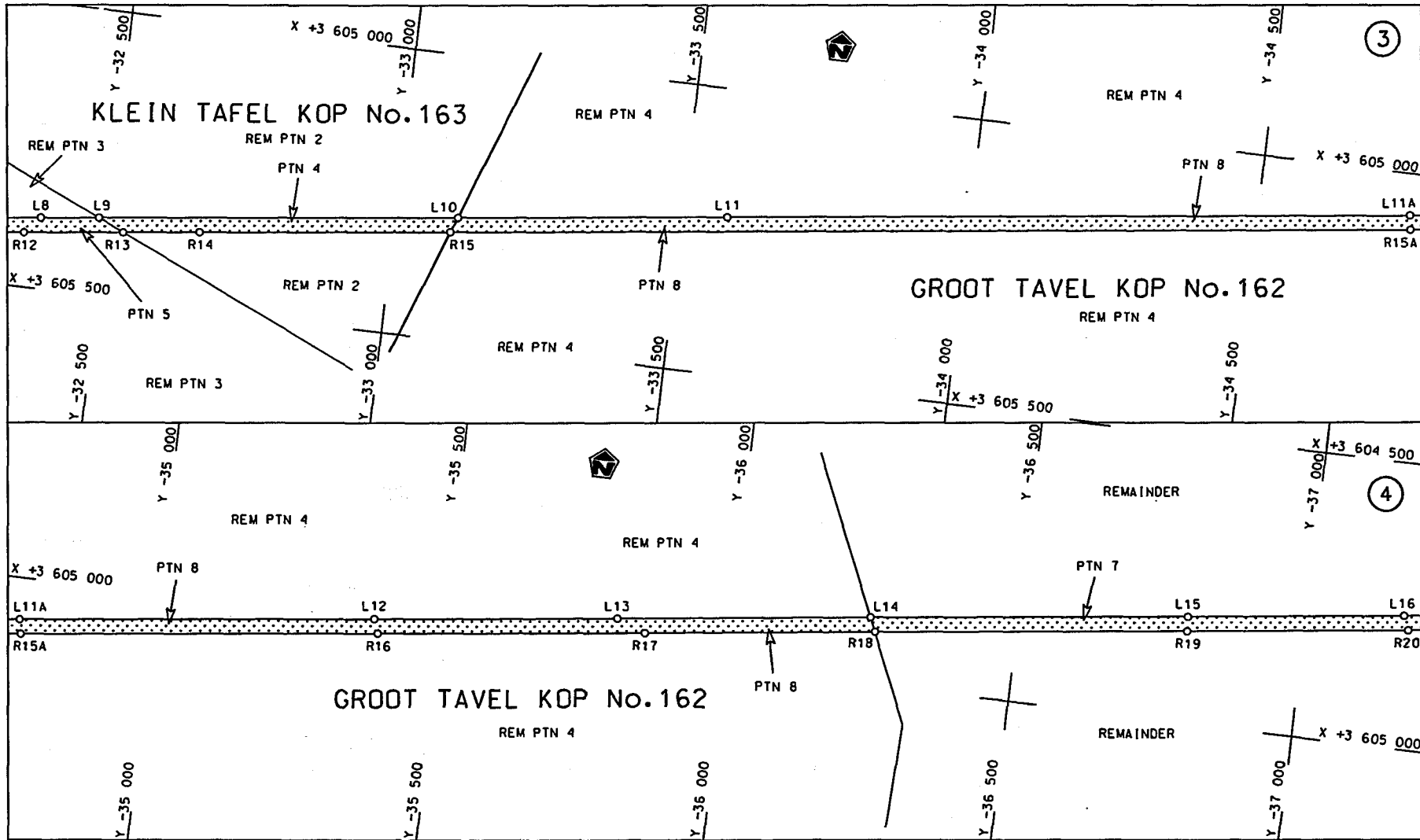
**(Nasionale Pad R61 Seksie 1: Wes Kaap/Oos Kaap Provinsiale Grens – Aberdeen)**

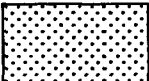


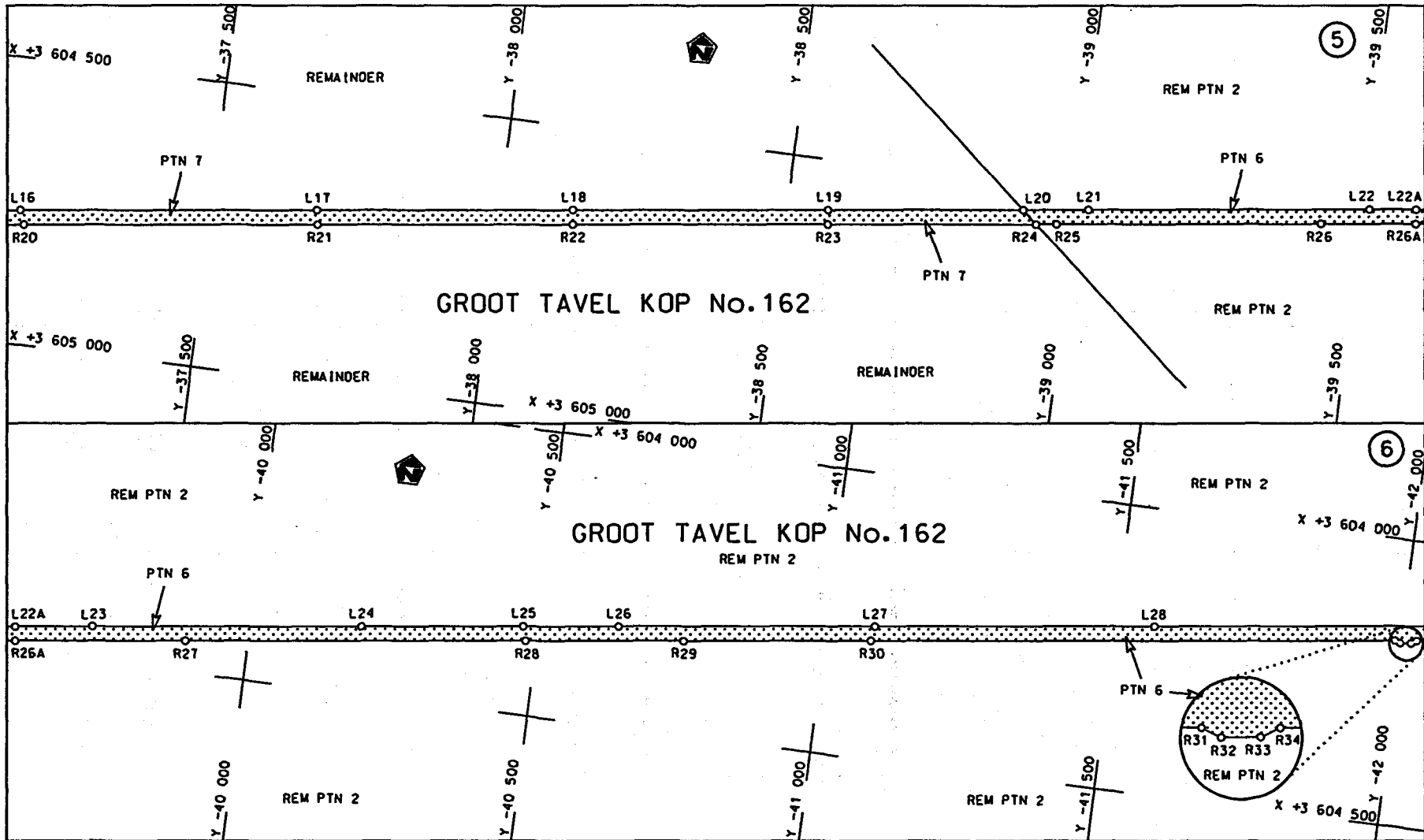
**MINISTER VAN VERVOER**



<p>Die Suid Afrikaanse Nasionale Padagentskop Beperk</p>	<p>Die figuur getoon</p>		<p>steldie padreserwe voor van 'n gedeelte represents the road reserve of a portion van Nasionale Roete R61 Seksie of National Route 1</p>	<p>Vel Sheet 1 van 21 of of</p>
<p>The South African National Roads Agency Limited</p>	<p>The figure shown</p>		<p>1</p>	<p>Plan P695/08</p>

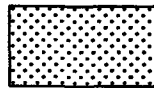


<p>Die Suid Afrikaanse Nasionale Podogentskap Beperk The South African National Roads Agency Limited</p>	<p>Die figuur getoon The figure shown</p>		<p>steld die podreserwe voor van 'n gedeelte represents the road reserve of a portion van Nasionale Roete R61 of National Route R61</p> <p>Seksie Section</p> <p>1</p>	<p>Vel Sheet 2 van of 21</p> <p>Plan P695/08</p>
--------------------------------------------------------------------------------------------------------------	-----------------------------------------------	---------------------------------------------------------------------------------------	----------------------------------------------------------------------------------------------------------------------------------------------------------------------------------------	--------------------------------------------------------------



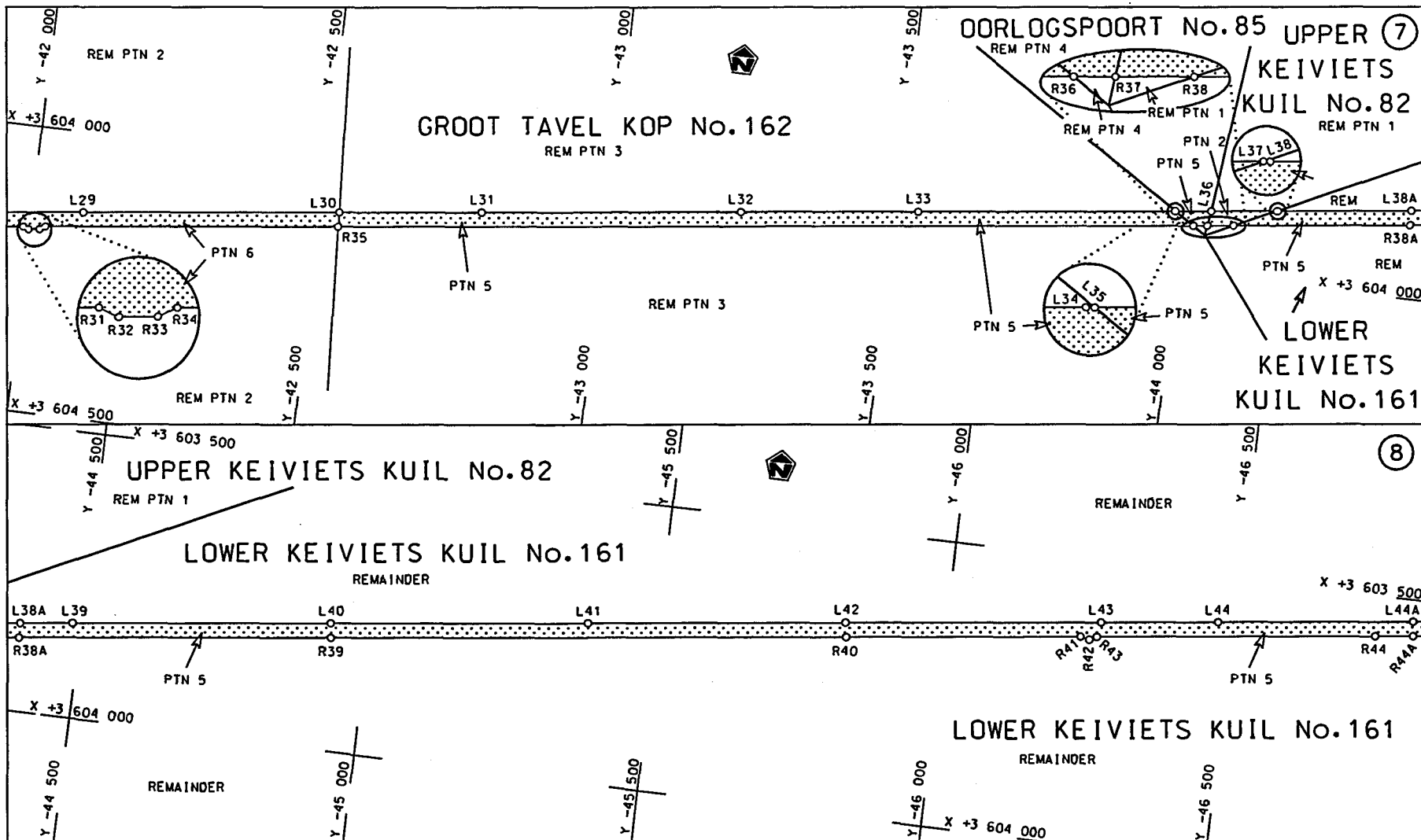
Die Suid Afrikaanse Nasionale Padagentskap Beperk  
The South African National Roads Agency Limited

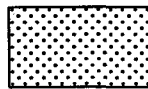
Die figuur getoon  
The figure shown

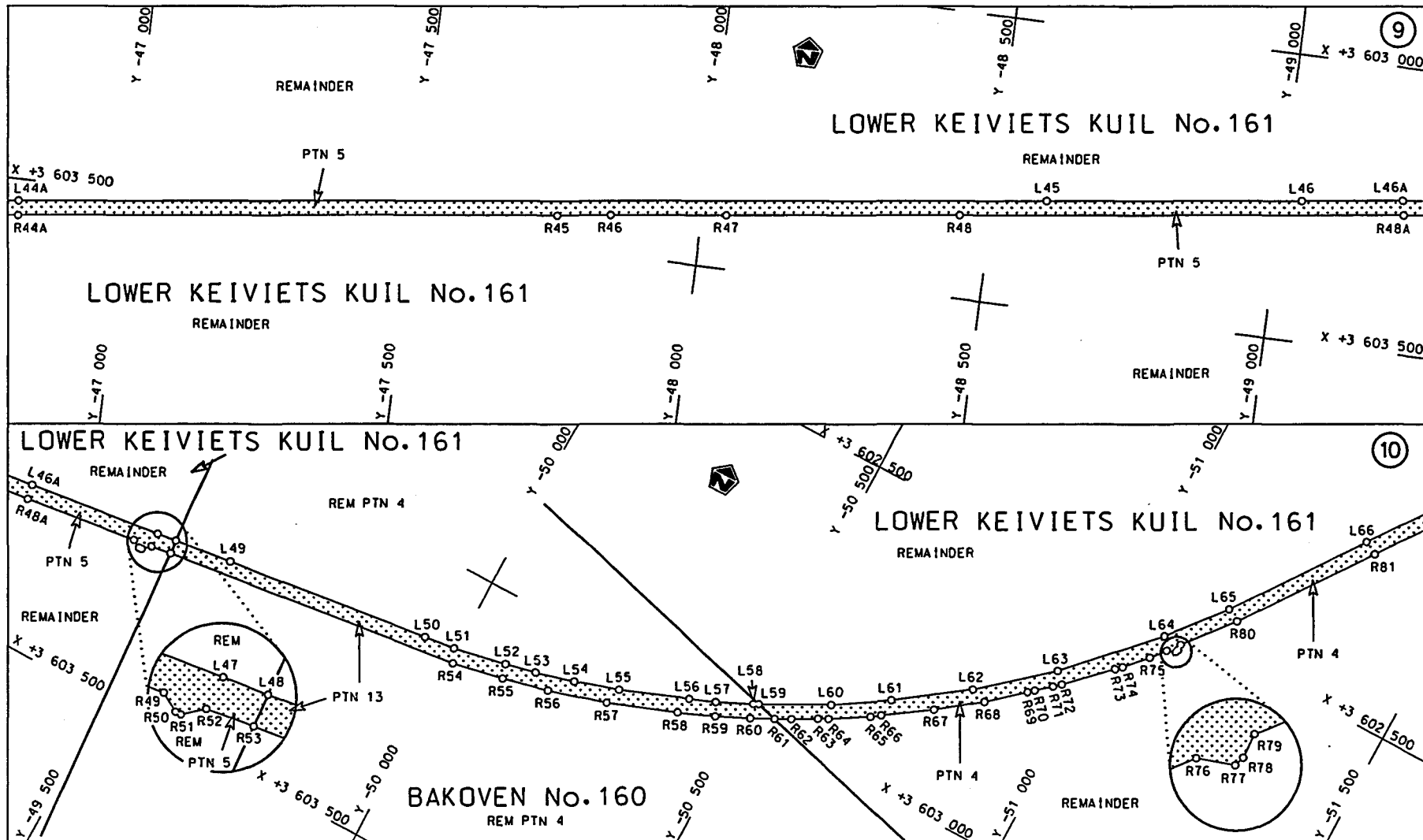


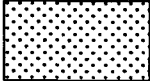
stel die padreserwe voor van 'n gedeelte  
represents the road reserve of a portion  
van Nasionale Roete R61 Sektie  
of National Route R61 Section

Vel Sheet 3 van 21  
Plan P695/08

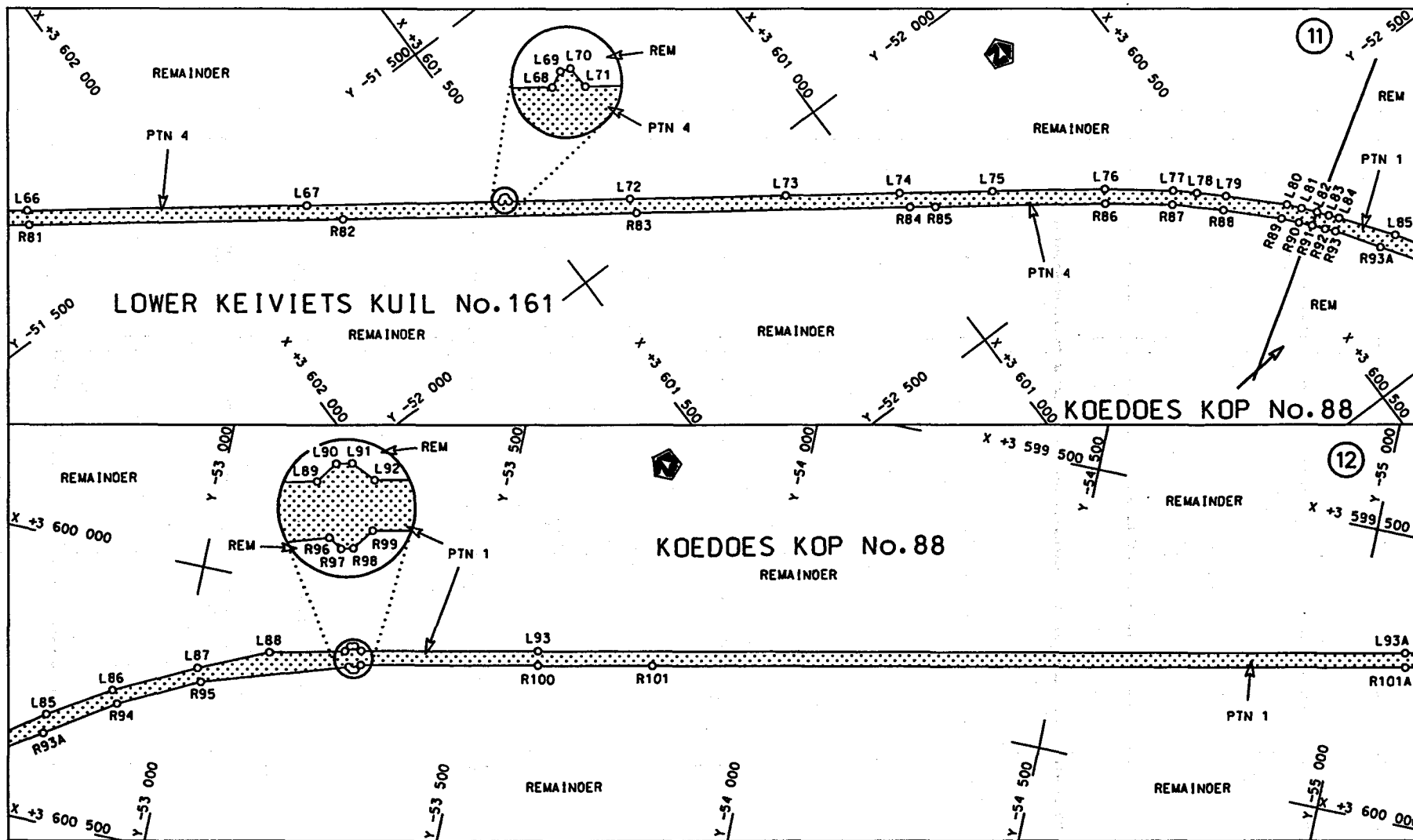



<p>Die Suid Afrikaanse Nasionale Padagentskap Beperk The South African National Roads Agency Limited</p>	<p>Die figuur getoon The figure shown</p> 	<p>stel die padreserwe voor van 'n gedeelte represents the road reserve of a portion van Nasionale Roete R61 of National Route R61</p> <p>Seksie 1 Section 1</p>	<p>Vel Sheet 4 van of 21 Plan P695/08</p>
--------------------------------------------------------------------------------------------------------------	------------------------------------------------------------------------------------------------------------------------------------	----------------------------------------------------------------------------------------------------------------------------------------------------------------------------------	-----------------------------------------------

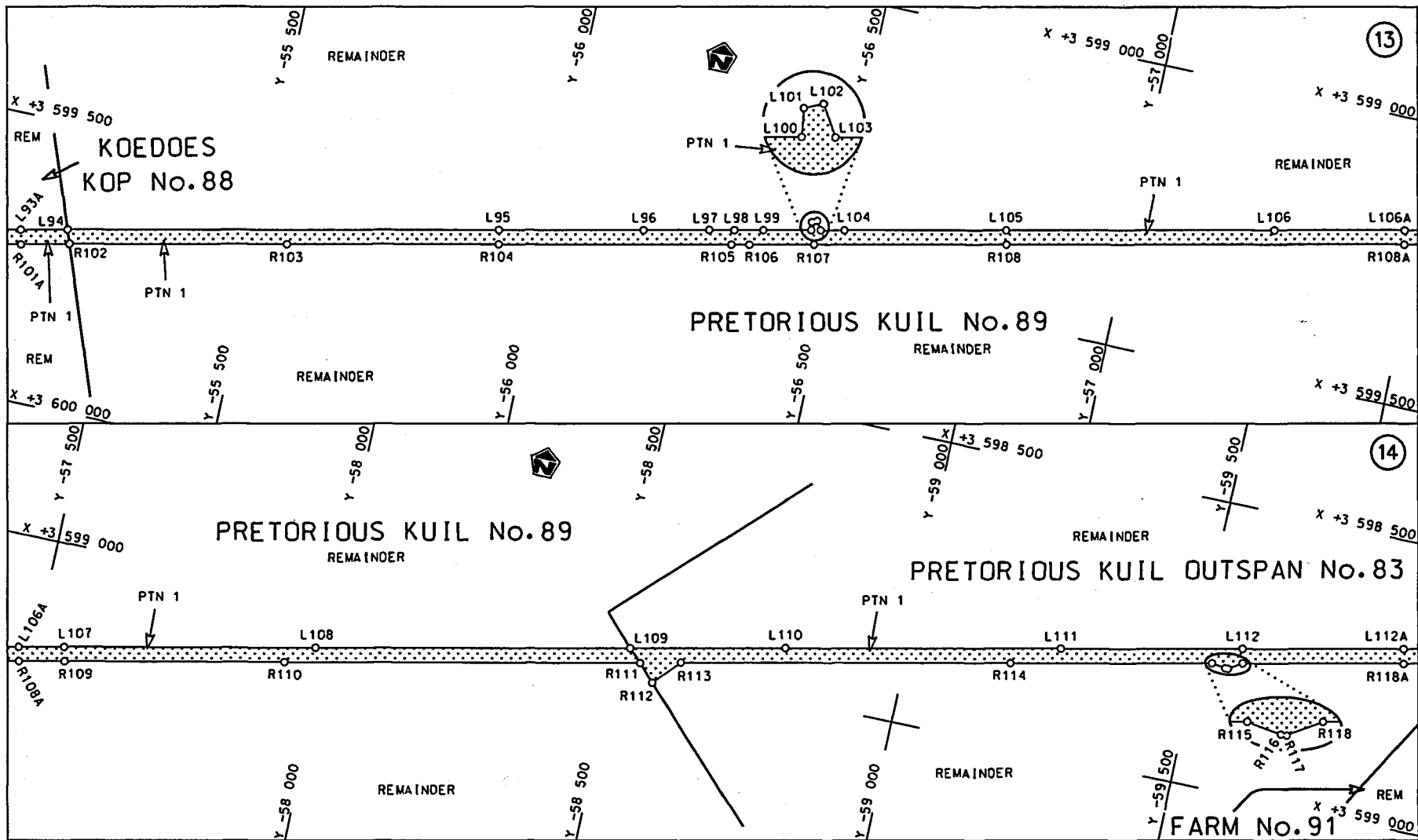


<p>Die Suid Afrikaanse Nasionale Padogentskap Beperk The South African National Roads Agency Limited</p>	<p>Die figuur getoon The figure shown</p> 	<p>stel die padreserwe voor van 'n gedeelte represents the road reserve of a portion van Nasionale Roete R61 of National Route R61</p> <p>Seksie 1</p>	<p>Vel Sheet 5 van 21 Plan P695/08</p>
--------------------------------------------------------------------------------------------------------------	-------------------------------------------------------------------------------------------------------------------------------------	--------------------------------------------------------------------------------------------------------------------------------------------------------------------	--------------------------------------------



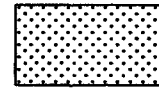


<p>Die Suid Afrikaanse Nasionale Padagentskap Beperk The South African National Roads Agency Limited</p>	<p>Die figuur getoon The figure shown</p> 	<p>stef die padreserwe voor van 'n gedeelte represents the road reserve of a portion van Nasionale Roete R61 Sektie of National Route R61 Section 1</p>	<p>Vel Sheet 6 van of 21 Plan P695/08</p>
--------------------------------------------------------------------------------------------------------------	-------------------------------------------------------------------------------------------------------------------------------------	---------------------------------------------------------------------------------------------------------------------------------------------------------------------	-----------------------------------------------



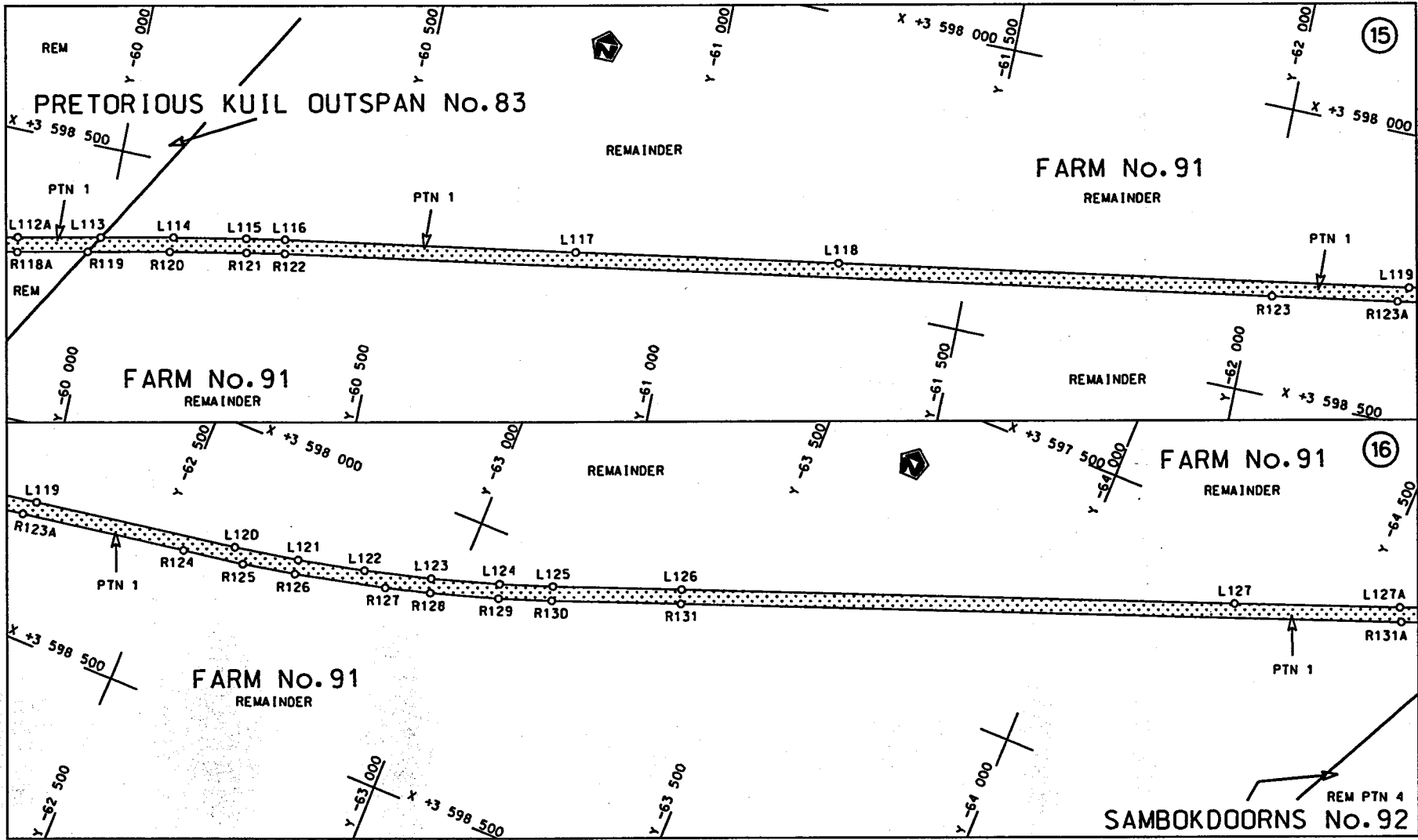
Die Suid Afrikaanse Nasionale Padagentskap Beperk  
The South African National Roads Agency Limited

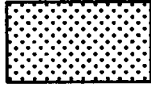
Die figuur getoon  
The figure shown

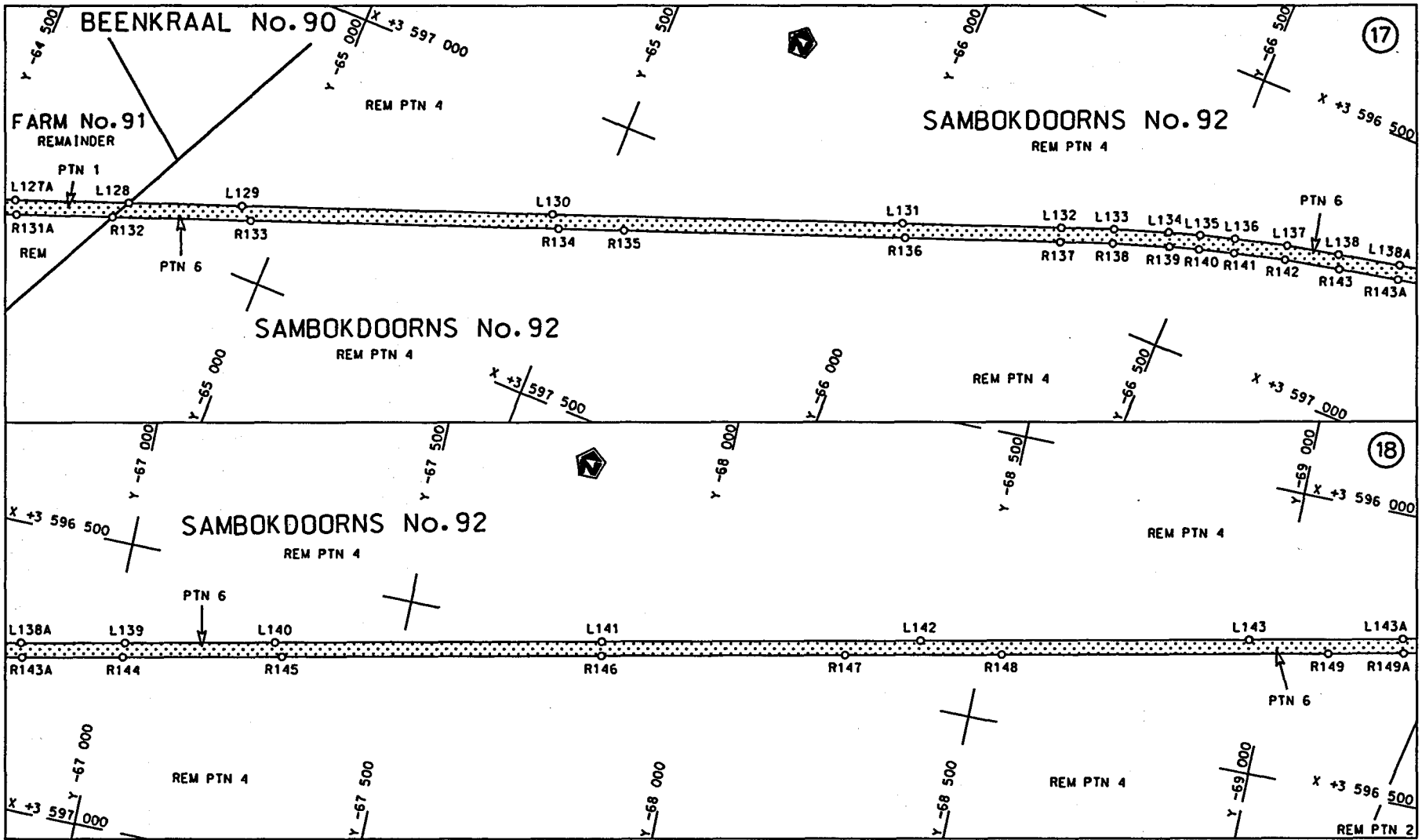


steldie padreserwe voor van 'n gedeelte  
represents the road reserve of a portion  
von Nasionale Roete R61 Seksie Section 1

Vel Sheet 7 van of 21  
Plan P695/08

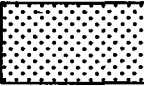


<p>Die Suid Afrikaanse Nasionale Padagentskap Beperk The South African National Roads Agency Limited</p>	<p>Die figuur getoon The figure shown</p> 	<p>steldie padreserwe voor van 'n gedeelte represents the road reserve of a portion van Nasionale Roete R61 Sektie of National Route Section</p> <p>1</p>	<p>Vel Sheet 8 van of 21</p> <p>Plan P695/08</p>
--------------------------------------------------------------------------------------------------------------	-------------------------------------------------------------------------------------------------------------------------------------	-----------------------------------------------------------------------------------------------------------------------------------------------------------------------	--------------------------------------------------------------



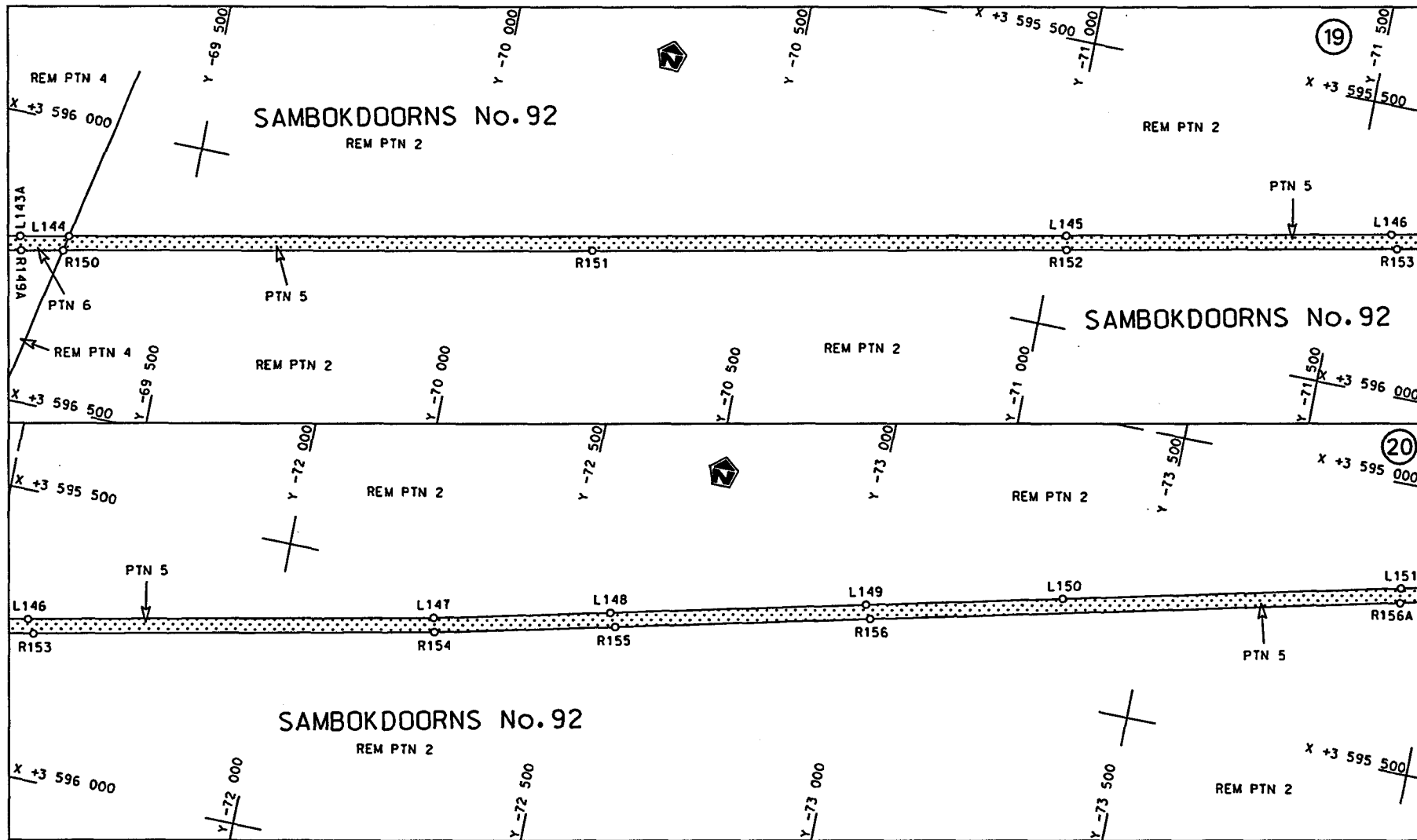
Die Suid Afrikaanse Nasionale Padagentskap Beperk  
The South African National Roads Agency Limited

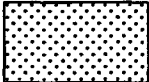
Die figuur getoon  
The figure shown

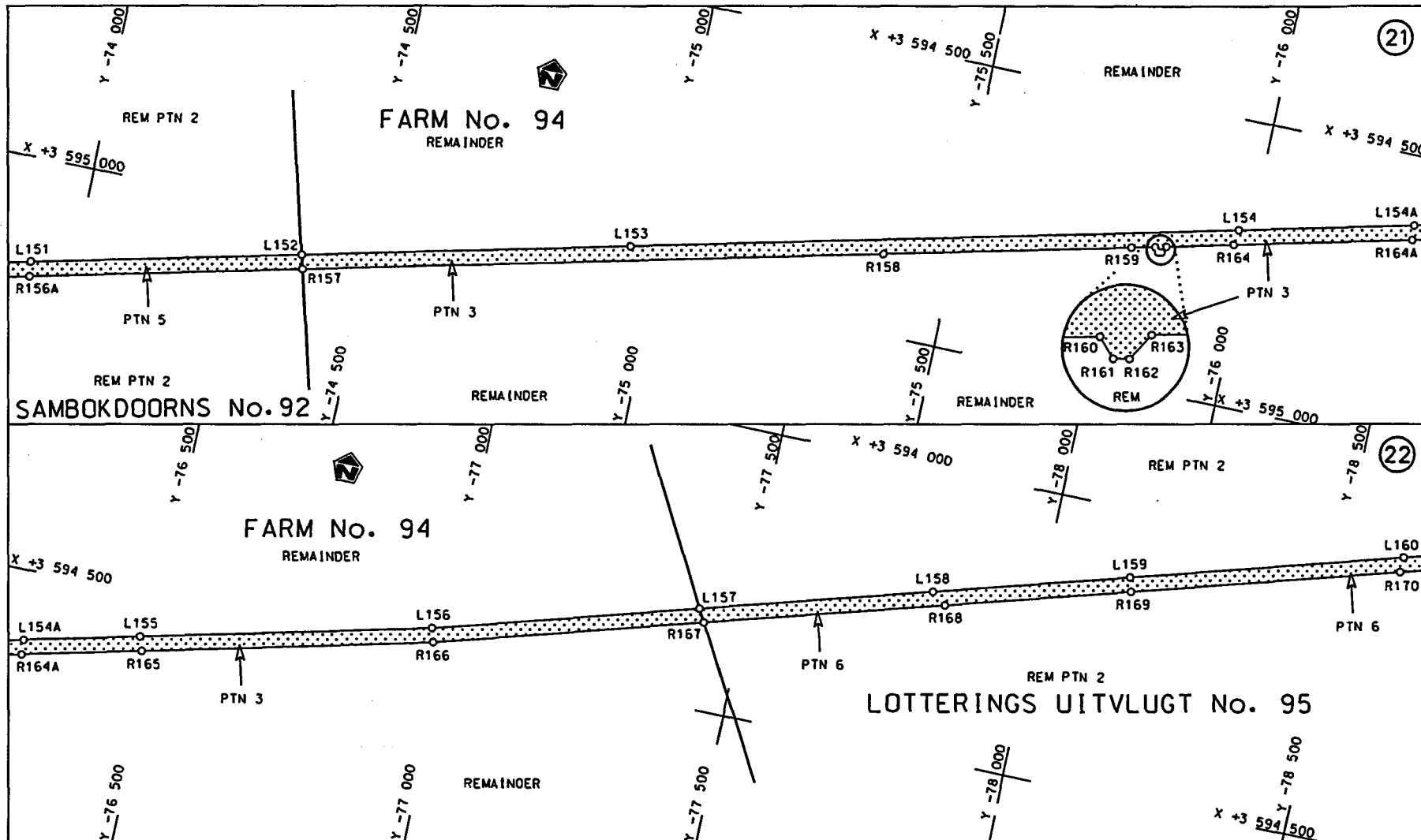


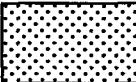
steldie padreserwe voor van 'n gedeelte  
represents the road reserve of a portion  
van Nasionale Roete R61 Sektie  
of National Route R61 Section 1

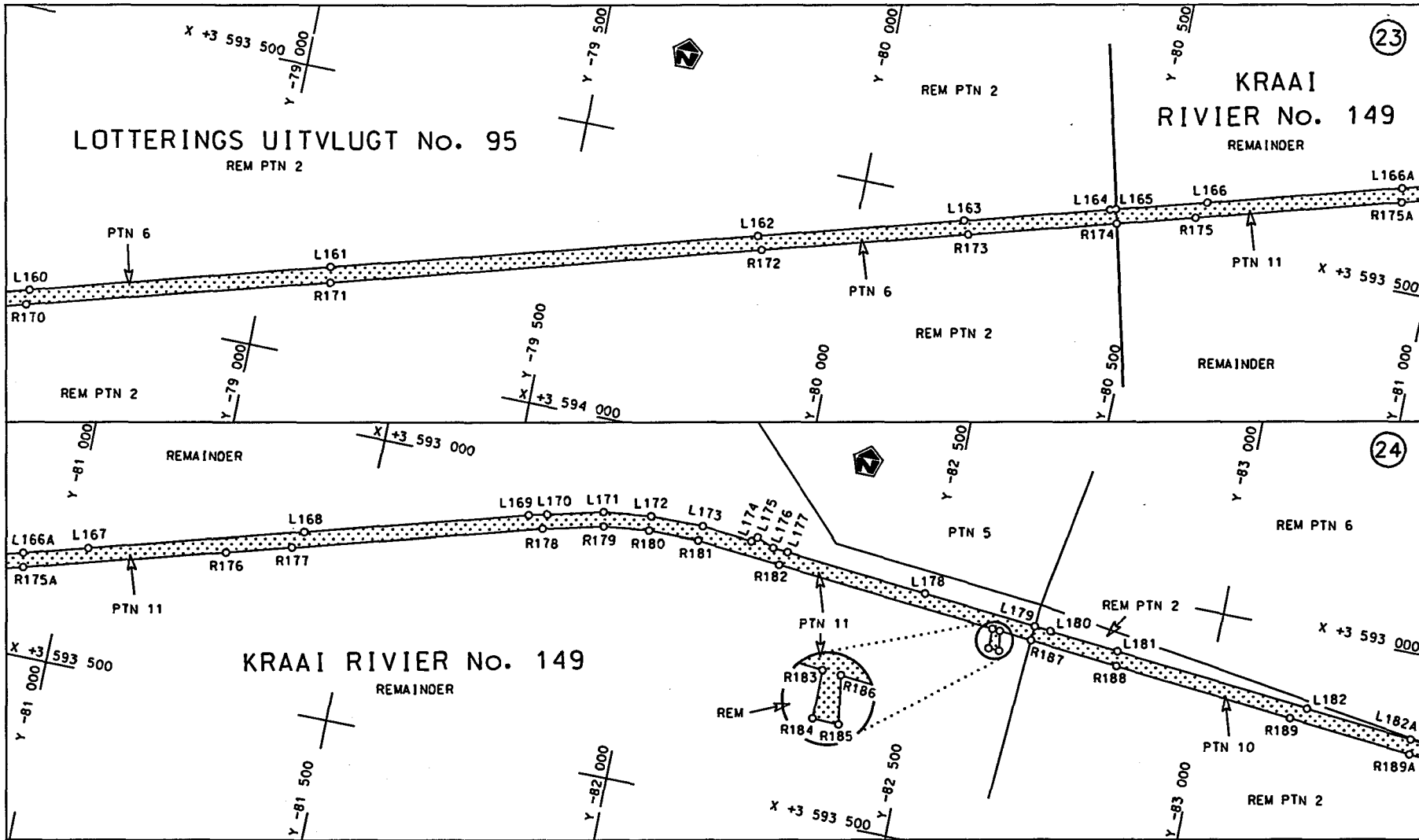
Vel Sheet 9 van of 21  
Plan P695/08

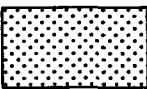


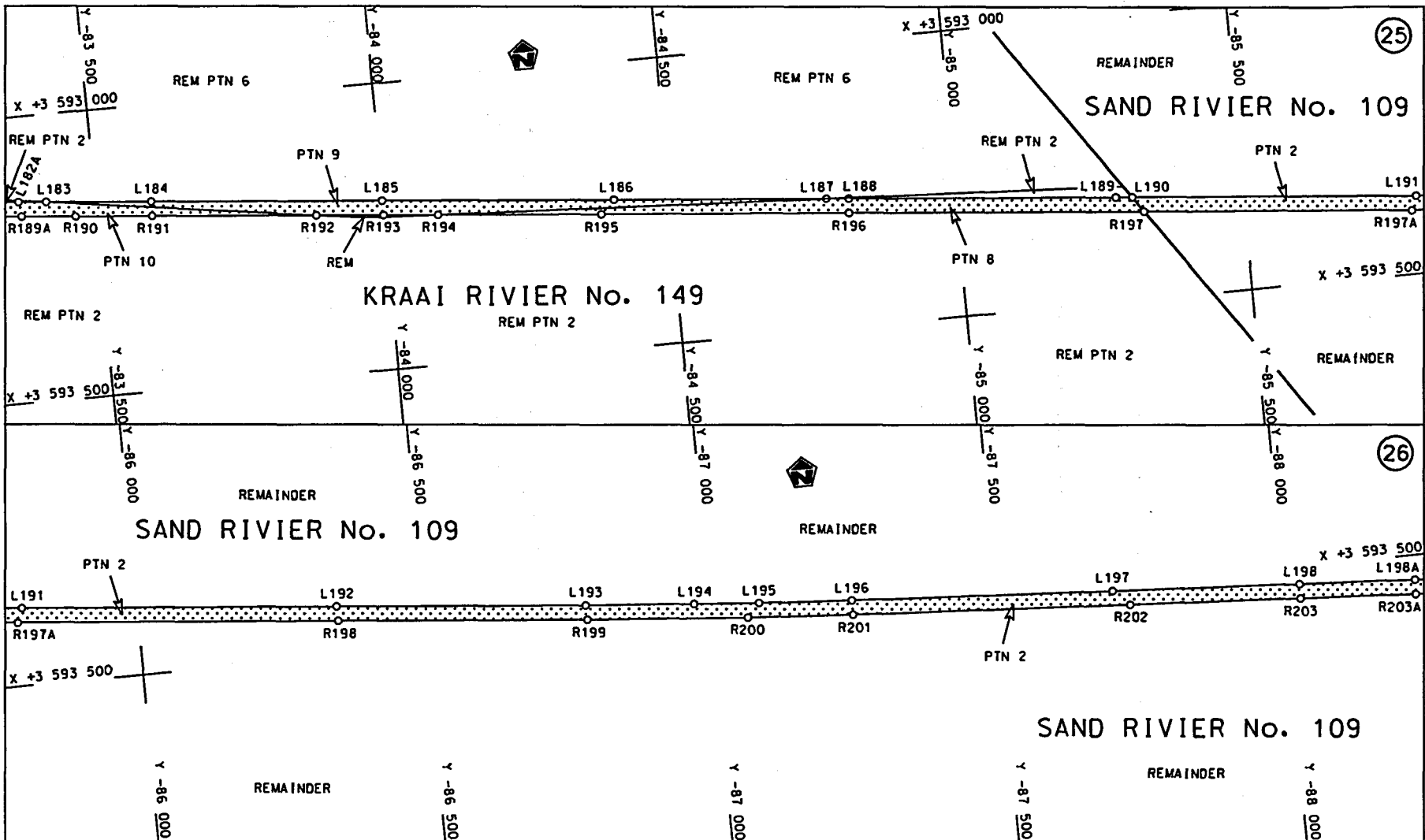
Die Suid Afrikaanse Nasionale Padagentskap Beperk The South African National Roads Agency Limited	Die figuur getoon The figure shown	 steldie padreserwe voor van 'n gedeelte represents the road reserve of a portion van Nasionale Roete R61 of National Route R61 Seksie 1 Section 1	Vel Sheet 10 of 21 Plan P695/08
------------------------------------------------------------------------------------------------------	---------------------------------------	--------------------------------------------------------------------------------------------------------------------------------------------------------------------------------------------------------------------------------------------------------	------------------------------------

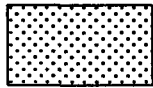


<p>Die Suid Afrikaanse Nasionale Padogenskap Beperk The South African National Roads Agency Limited</p>	<p>Die figuur getoon The figure shown</p>		<p>steldie padreserwe voor van 'n gedeelte represents the road reserve of a portion van Nasionale Raete R61 Seksie of National Route Section 1</p>	<p>Vel Sheet 11 van 21 of of Plan P695/08</p>
-------------------------------------------------------------------------------------------------------------	-----------------------------------------------	---------------------------------------------------------------------------------------	----------------------------------------------------------------------------------------------------------------------------------------------------------------	-------------------------------------------------------

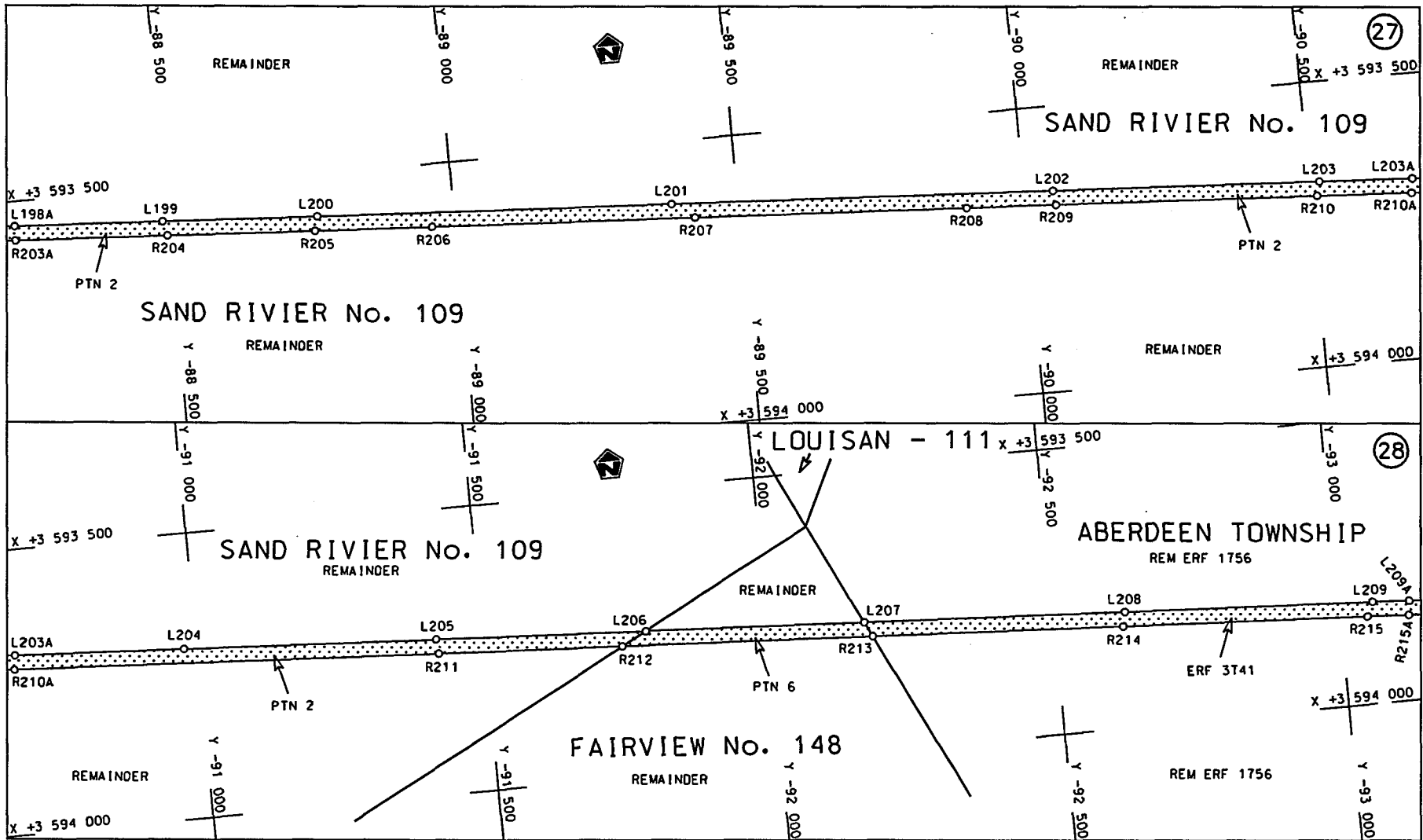


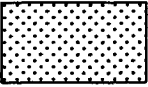
<p>Die Suid Afrikaanse Nasionale Podogenskap Beperk The South African National Roads Agency Limited</p>	<p>Die figuur getoon The figure shown</p>		<p>steldie padreserwe voor van 'n gedeelte represents the road reserve of a portion van Nasionale Roete R61 Seksie Section of National Route R61 Sektion Section 1</p>	<p>Vel Sheet 12 van 21 of of Plan P695/08</p>
-------------------------------------------------------------------------------------------------------------	-----------------------------------------------	---------------------------------------------------------------------------------------	----------------------------------------------------------------------------------------------------------------------------------------------------------------------------------------	-------------------------------------------------------

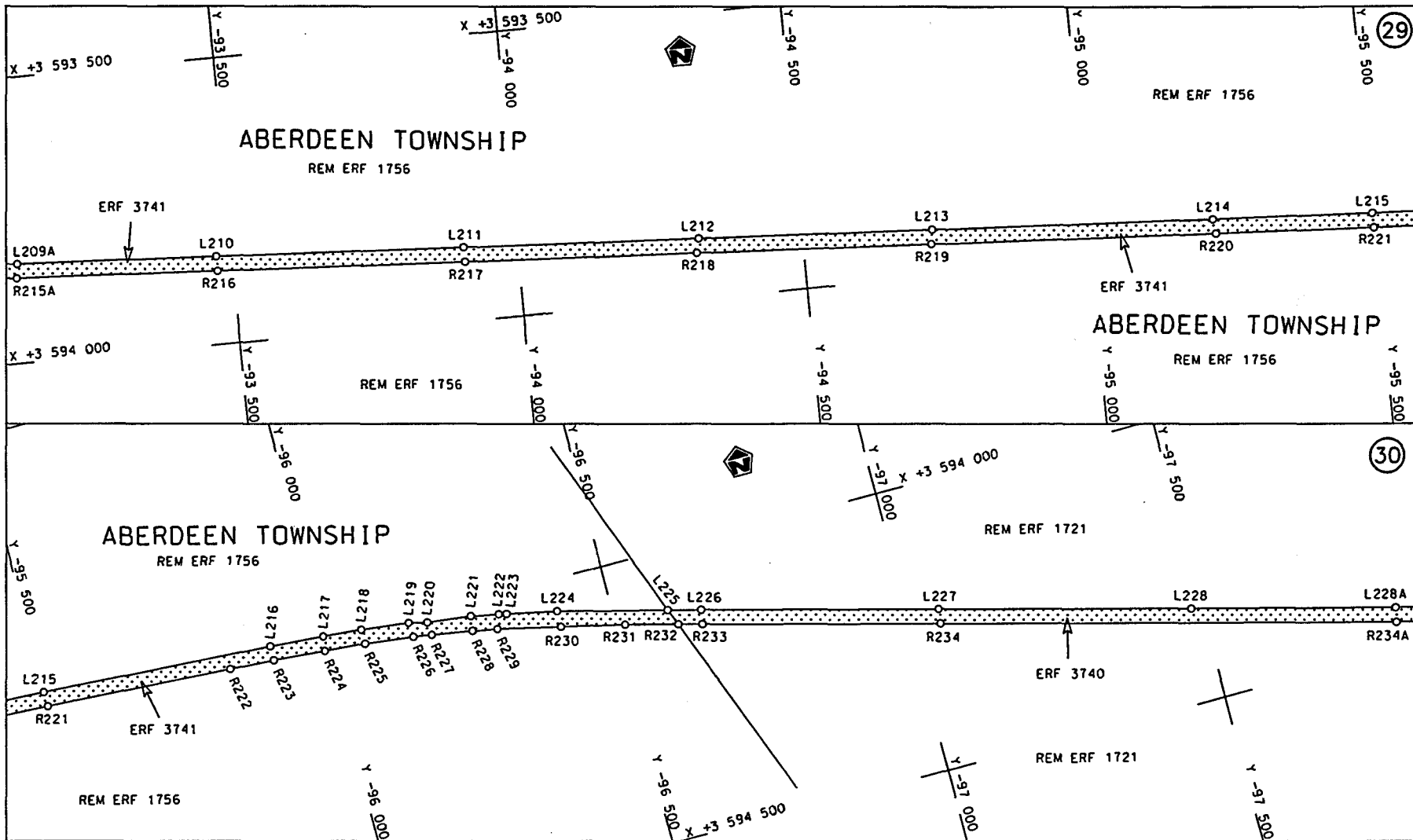


Die Suid Afrikaanse Nasionale Padagentskap Beperk The South African National Roads Agency Limited	Die figuur getoon The figure shown		steldie podreserwe voor van 'n gedeelte represents the road reserve of a portion van Nasionale Roete of National Route R61 Seksie Section 1	Vel Sheet 13 van of 21 Plan P695/08
------------------------------------------------------------------------------------------------------	---------------------------------------	---------------------------------------------------------------------------------------	------------------------------------------------------------------------------------------------------------------------------------------------------------	----------------------------------------------

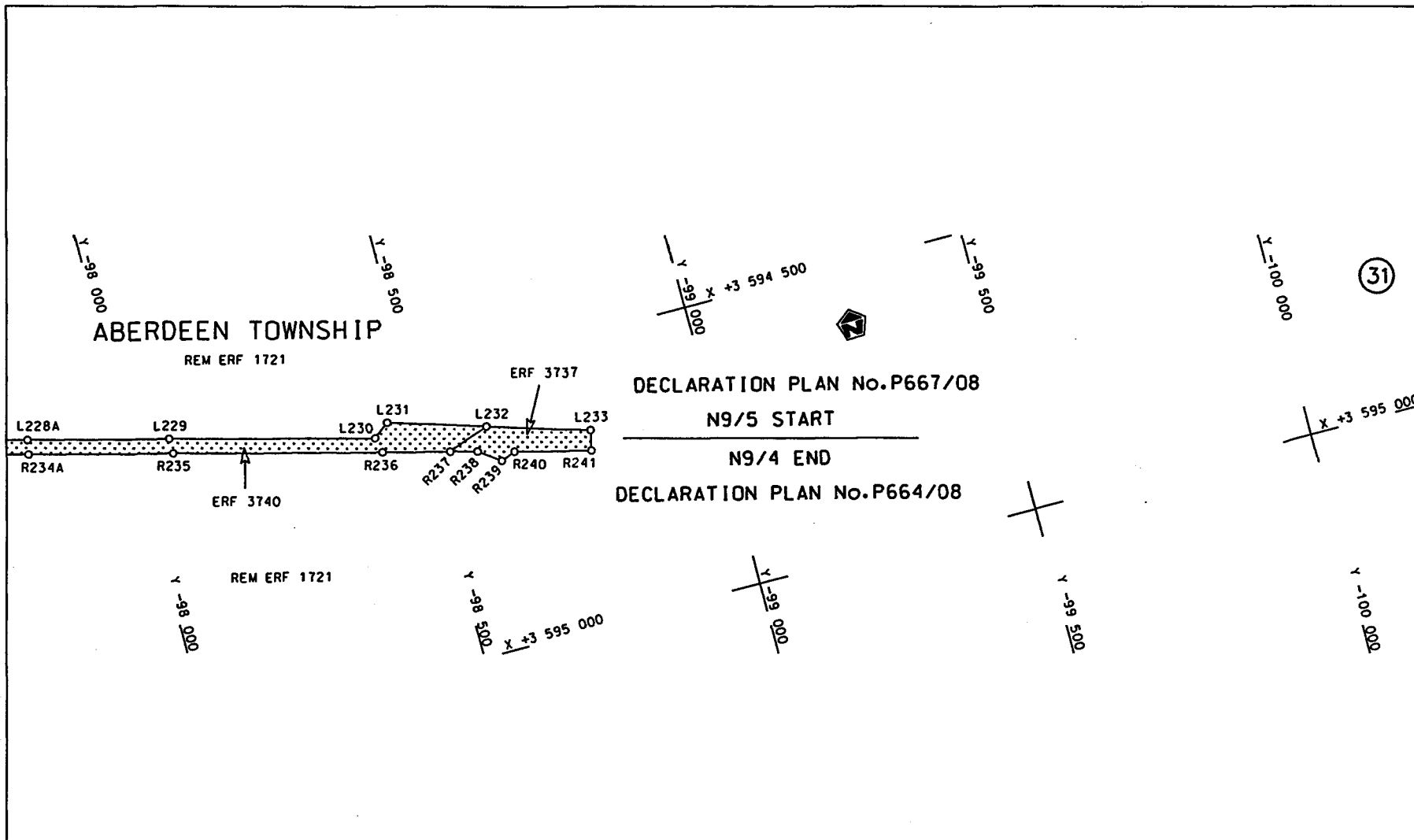


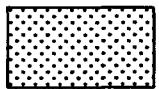


<p>Die Suid Afrikaanse Nasionale Padagentskap Beperk The South African National Roads Agency Limited</p>	<p>Die figuur getoon The figure shown</p>	<p></p> <p>steldie padreserwe voor van 'n gedeelte represents the road reserve of a portion van Nasionale Roete R61 Seksie of National Route R61 Section 1</p>	<p>Vel Sheet 14 van 21 Plan P695/08</p>
--------------------------------------------------------------------------------------------------------------	-----------------------------------------------	-----------------------------------------------------------------------------------------------------------------------------------------------------------------------------------------------------------------------------------------------------------------	---------------------------------------------



<p>Die Suid Afrikaanse Nasionale Padagentskap Beperk The South African National Roads Agency Limited</p>	<p>Die figuur getoon The figure shown</p>		<p>steldie padreserve voor van 'n gedeelte represents the road reserve of a portion van Nasionale Roete R61 of National Route R61</p> <p>Seksie Section</p>	<p>Vel Sheet 15 van of 21</p> <p>Plan P695/08</p>
--------------------------------------------------------------------------------------------------------------	-----------------------------------------------	--	-----------------------------------------------------------------------------------------------------------------------------------------------------------------------------	---------------------------------------------------------------



<p>Die Suid Afrikaanse Nasionale Padogentskop Beperk The South African National Roads Agency Limited</p>	<p>Die figuur getoon The figure shown</p> 	<p>stel die padreserwe voor van 'n gedeelte represents the road reserve of a portion van Nasionale Roete R61 Seksie of National Route Section 1</p>	<p>Vel Sheet 16 von of 21 Plan P695/08</p>
--------------------------------------------------------------------------------------------------------------	-------------------------------------------------------------------------------------------------------------------------------------	-----------------------------------------------------------------------------------------------------------------------------------------------------------------	------------------------------------------------

PADRESERWE KOÖRDINATE / ROAD RESERVE CO-ORDINATES											
LINKERKANT/LEFT HAND SIDE					REGTERKANT/RIGHT HAND SIDE						
	Y		X	WG 23°		Y		X			
L1	-27	893.700	3	605	948.310	R1	-27	901.550	3	605	977.910
L2	-28	340.790	3	605	891.370	R2	-27	920.250	3	605	976.190
L3	-28	791.130	3	605	834.090	R3	-27	923.750	3	605	969.950
L4	-29	122.600	3	605	791.760	R4	-28	343.270	3	605	916.670
L5	-30	935.150	3	605	560.800	R5	-28	788.910	3	605	859.640
L6	-31	390.800	3	605	502.670	R6	-29	129.150	3	605	816.390
L7	-31	879.080	3	605	440.510	R7	-29	601.330	3	605	756.140
L8	-32	384.100	3	605	375.870	R8	-30	137.750	3	605	687.810
L9	-32	485.670	3	605	362.960	R9	-30	476.580	3	605	644.500
L10	-33	108.630	3	605	283.780	R10	-31	392.660	3	605	527.900
L11	-33	578.380	3	605	223.930	R11	-31	879.840	3	605	465.840
L12	-35	379.800	3	604	994.550	R12	-32	357.980	3	605	404.820
L13	-35	803.110	3	604	940.580	R13	-32	530.900	3	605	382.840
L14	-36	243.240	3	604	884.220	R14	-32	664.070	3	605	365.920
L15	-36	795.930	3	604	813.960	R15	-33	098.900	3	605	310.460
L16	-37	169.820	3	604	766.380	R16	-35	388.620	3	605	018.690
L17	-37	684.500	3	604	700.760	R17	-35	854.250	3	604	959.530
L18	-38	128.110	3	604	644.280	R18	-36	253.890	3	604	908.440
L19	-38	571.980	3	604	587.720	R19	-36	797.530	3	604	839.240
L20	-38	909.330	3	604	544.690	R20	-37	179.720	3	604	790.690
L21	-39	021.870	3	604	530.330	R21	-37	689.340	3	604	725.730
L22	-39	510.590	3	604	468.060	R22	-38	131.670	3	604	669.270
L23	-39	725.890	3	604	440.740	R23	-38	574.930	3	604	612.760
L24	-40	193.870	3	604	381.180	R24	-38	935.380	3	604	566.860
L25	-40	473.530	3	604	345.400	R25	-38	970.330	3	604	562.410
L26	-40	639.600	3	604	324.100	R26	-39	430.300	3	604	503.710
L27	-41	084.840	3	604	267.410	R27	-39	890.260	3	604	445.200
L28	-41	568.650	3	604	205.660	R28	-40	480.720	3	604	369.890
L29	-42	088.790	3	604	139.500	R29	-40	755.760	3	604	334.850
L30	-42	532.630	3	604	082.980	R30	-41	080.920	3	604	293.310
L31	-42	780.780	3	604	051.420	R31	-41	989.110	3	604	177.520
L32	-43	230.380	3	603	993.890	R32	-41	999.210	3	604	180.950
L33	-43	537.950	3	603	954.910	R33	-42	018.110	3	604	178.410
L34	-43	983.820	3	603	897.920	R34	-42	027.080	3	604	172.680
L35	-43	985.660	3	603	897.680	R35	-42	534.110	3	604	108.160
L36	-44	046.090	3	603	890.010	R36	-44	019.110	3	603	918.970
L37	-44	160.670	3	603	875.370	R37	-44	043.130	3	603	915.910
L38	-44	162.620	3	603	875.120	R38	-44	088.660	3	603	910.110
L39	-44	484.800	3	603	834.220	R39	-44	934.750	3	603	802.260
L40	-44	931.570	3	603	777.330	R40	-45	830.000	3	603	688.380
L41	-45	378.400	3	603	720.320	R41	-46	237.660	3	603	636.370
L42	-45	826.070	3	603	663.370	R42	-46	253.580	3	603	639.200
L43	-46	269.790	3	603	606.850	R43	-46	265.540	3	603	632.790
L44	-46	471.590	3	603	581.100	R44	-46	747.710	3	603	571.290
L45	-48	594.960	3	603	310.550	R45	-47	748.610	3	603	443.830
L46	-49	036.260	3	603	254.210	R46	-47	841.760	3	603	431.890
L47	-49	445.420	3	603	202.080	R47	-48	041.400	3	603	406.420
L48	-49	478.800	3	603	197.870	R48	-48	447.070	3	603	354.760
L49	-49	579.170	3	603	185.150	R49	-49	413.820	3	603	231.510
L50	-49	941.820	3	603	138.740	R50	-49	427.230	3	603	239.500
L51	-49	995.890	3	603	131.800	R51	-49	431.610	3	603	239.360

Vel	17	Van	21	P695/08
Sheet		of		

PADRESERWE KOÖRDINATE / ROAD RESERVE CO-ORDINATES											
LINKERKANT/LEFT HAND SIDE					REGTERKANT/RIGHT HAND SIDE						
	Y		X	WG 23°		Y		X			
L52	-50	092.769	3	603	113.181	R52	-49	445.400	3	603	227.440
L53	-50	142.050	3	603	100.780	R53	-49	480.480	3	603	222.090
L54	-50	207.840	3	603	082.760	R54	-50	006.650	3	603	155.860
L55	-50	284.430	3	603	059.000	R55	-50	096.320	3	603	137.640
L56	-50	399.990	3	603	013.950	R56	-50	175.150	3	603	118.330
L57	-50	443.740	3	602	996.820	R57	-50	275.780	3	603	089.200
L58	-50	504.888	3	602	970.346	R58	-50	393.460	3	603	045.300
L59	-50	511.011	3	602	970.377	R59	-50	454.820	3	603	019.230
L60	-50	623.010	3	602	905.170	R60	-50	509.690	3	602	993.330
L61	-50	711.650	3	602	848.720	R61	-50	547.640	3	602	974.250
L62	-50	828.890	3	602	763.830	R62	-50	573.610	3	602	970.694
L63	-50	943.780	3	602	665.170	R63	-50	614.200	3	602	938.160
L64	-51	077.940	3	602	523.330	R64	-50	630.710	3	602	928.900
L65	-51	155.480	3	602	429.560	R65	-50	693.120	3	602	890.840
L66	-51	312.150	3	602	210.720	R66	-50	708.410	3	602	880.710
L67	-51	597.810	3	601	811.640	R67	-50	785.530	3	602	827.920
L68	-51	797.080	3	601	533.510	R68	-50	856.920	3	602	773.240
L69	-51	793.870	3	601	526.920	R69	-50	915.190	3	602	722.730
L70	-51	795.390	3	601	522.870	R70	-50	925.420	3	602	713.850
L71	-51	804.960	3	601	522.540	R71	-50	949.490	3	602	692.960
L72	-51	929.610	3	601	348.510	R72	-50	961.330	3	602	682.770
L73	-52	087.957	3	601	130.106	R73	-51	029.860	3	602	614.990
L74	-52	204.780	3	600	964.340	R74	-51	039.600	3	602	605.390
L75	-52	299.310	3	600	831.990	R75	-51	073.470	3	602	568.350
L76	-52	414.750	3	600	670.870	R76	-51	093.860	3	602	543.520
L77	-52	489.740	3	600	575.980	R77	-51	109.220	3	602	538.540
L78	-52	517.300	3	600	544.740	R78	-51	110.570	3	602	534.350
L79	-52	552.490	3	600	507.280	R79	-51	110.080	3	602	523.700
L80	-52	628.510	3	600	431.350	R80	-51	177.600	3	602	441.260
L81	-52	649.750	3	600	414.170	R81	-51	334.040	3	602	223.350
L82	-52	671.175	3	600	396.839	R82	-51	665.137	3	601	775.663
L83	-52	687.540	3	600	383.600	R83	-51	956.400	3	601	354.080
L84	-52	701.650	3	600	372.190	R84	-52	235.340	3	600	964.520
L85	-52	784.620	3	600	311.580	R85	-52	261.170	3	600	928.500
L86	-52	889.250	3	600	246.030	R86	-52	435.610	3	600	685.680
L87	-53	027.690	3	600	175.660	R87	-52	508.650	3	600	591.690
L88	-53	143.940	3	600	122.330	R88	-52	569.430	3	600	525.690
L89	-53	272.610	3	600	091.930	R89	-52	642.310	3	600	453.720
L90	-53	280.010	3	600	081.380	R90	-52	666.760	3	600	433.130
L91	-53	287.650	3	600	079.540	R91	-52	684.852	3	600	417.900
L92	-53	300.200	3	600	085.280	R92	-52	702.450	3	600	403.090
L93	-53	604.560	3	600	020.040	R93	-52	716.650	3	600	391.130
L94	-55	173.040	3	599	685.040	R94	-52	902.250	3	600	267.550
L95	-55	913.260	3	599	526.940	R95	-53	038.380	3	600	198.370
L96	-56	163.790	3	599	473.890	R96	-53	284.500	3	600	117.510
L97	-56	276.650	3	599	449.520	R97	-53	291.230	3	600	121.660
L98	-56	318.890	3	599	440.880	R98	-53	297.110	3	600	120.090
L99	-56	375.388	3	599	430.155	R99	-53	304.610	3	600	109.710
L100	-56	452.640	3	599	412.260	R100	-53	609.450	3	600	044.620
L101	-56	450.730	3	599	398.290	R101	-53	807.020	3	600	002.540
L102	-56	459.860	3	599	394.030	R102	-55	181.550	3	599	708.820

Vel	18	Van	21	P695/08
Sheet		of		

PADRESERWE KOÖRDINATE / ROAD RESERVE CO-ORDINATES											
LINKERKANT/LEFT HAND SIDE					REGTERKANT/RIGHT HAND SIDE						
	Y		X	WG 23°		Y		X			
L103	-56	469.010	3	599	408.960	R103	-55	555.930	3	599	628.910
L104	-56	509.950	3	599	400.090	R104	-55	917.910	3	599	551.530
L105	-56	786.420	3	599	340.860	R105	-56	318.930	3	599	466.710
L106	-57	247.060	3	599	242.240	R106	-56	350.000	3	599	460.280
L107	-57	549.720	3	599	177.760	R107	-56	462.780	3	599	435.810
L108	-57	982.630	3	599	085.800	R108	-56	791.930	3	599	365.220
L109	-58	523.980	3	598	970.320	R109	-57	554.660	3	599	202.180
L110	-58	789.990	3	598	913.060	R110	-57	943.231	3	599	121.976
L111	-59	262.510	3	598	812.240	R111	-58	545.510	3	598	992.380
L112	-59	575.040	3	598	745.580	R112	-58	573.970	3	599	021.520
L113	-59	994.730	3	598	655.880	R113	-58	615.670	3	598	976.270
L114	-60	119.170	3	598	629.490	R114	-59	180.690	3	598	855.660
L115	-60	244.990	3	598	604.350	R115	-59	527.060	3	598	781.660
L116	-60	311.780	3	598	591.910	R116	-59	551.810	3	598	785.330
L117	-60	817.330	3	598	506.260	R117	-59	556.310	3	598	785.190
L118	-61	273.630	3	598	429.330	R118	-59	579.730	3	598	770.530
L119	-62	263.570	3	598	263.010	R119	-59	977.380	3	598	685.480
L120	-62	614.970	3	598	203.660	R120	-60	118.100	3	598	655.510
L121	-62	726.200	3	598	181.700	R121	-60	250.720	3	598	628.700
L122	-62	840.890	3	598	154.600	R122	-60	316.550	3	598	616.180
L123	-62	955.370	3	598	122.800	R123	-62	030.660	3	598	327.600
L124	-63	070.090	3	598	086.020	R124	-62	533.530	3	598	243.140
L125	-63	158.290	3	598	054.210	R125	-62	647.201	3	598	225.541
L126	-63	369.920	3	597	973.860	R126	-62	730.450	3	598	206.680
L127	-64	278.790	3	597	628.510	R127	-62	886.420	3	598	168.600
L128	-64	736.870	3	597	453.550	R128	-62	963.230	3	598	146.760
L129	-64	922.600	3	597	383.270	R129	-63	077.790	3	598	110.130
L130	-65	433.160	3	597	189.800	R130	-63	165.810	3	598	078.190
L131	-66	008.400	3	596	971.310	R131	-63	378.440	3	597	997.500
L132	-66	268.100	3	596	872.580	R132	-64	720.100	3	597	487.590
L133	-66	355.030	3	596	839.890	R133	-64	946.480	3	597	401.250
L134	-66	446.030	3	596	808.970	R134	-65	452.000	3	597	209.400
L135	-66	498.900	3	596	792.490	R135	-65	560.280	3	597	168.370
L136	-66	557.150	3	596	775.530	R136	-66	021.770	3	596	993.030
L137	-66	647.470	3	596	751.680	R137	-66	275.830	3	596	896.420
L138	-66	737.580	3	596	731.320	R138	-66	362.660	3	596	863.900
L139	-67	022.520	3	596	671.790	R139	-66	456.950	3	596	831.650
L140	-67	280.680	3	596	617.940	R140	-66	506.500	3	596	816.300
L141	-67	842.770	3	596	500.940	R141	-66	565.340	3	596	799.190
L142	-68	391.210	3	596	386.920	R142	-66	653.170	3	596	776.130
L143	-68	954.220	3	596	269.560	R143	-66	748.620	3	596	754.630
L144	-69	303.330	3	596	196.900	R144	-67	023.920	3	596	697.040
L145	-71	019.080	3	595	839.560	R145	-67	297.780	3	596	639.980
L146	-71	576.170	3	595	722.410	R146	-67	847.310	3	596	525.350
L147	-72	271.240	3	595	575.390	R147	-68	267.570	3	596	437.950
L148	-72	574.170	3	595	503.370	R148	-68	534.710	3	596	382.460
L149	-73	011.950	3	595	399.110	R149	-69	097.320	3	596	265.300
L150	-73	348.760	3	595	318.750	R150	-69	298.110	3	596	223.540
L151	-73	925.540	3	595	180.940	R151	-70	208.160	3	596	034.370
L152	-74	385.800	3	595	071.450	R152	-71	024.290	3	595	864.040
L153	-74	945.290	3	594	937.980	R153	-71	590.660	3	595	745.110

Vel  
Sheet

19

Van  
of

21

P695/08

PADRESERWE KOÖRDINATE / ROAD RESERVE CO-ORDINATES										
LINKERKANT/LEFT HAND SIDE					REGTERKANT/RIGHT HAND SIDE					
	Y	X	WG 23°		Y	X				
L154	-75 978.640	3 594 691.680		R154	-72 277.030	3 595 599.720				
L155	-76 473.730	3 594 573.530		R155	-72 587.090	3 595 526.150				
L156	-76 971.270	3 594 454.020		R156	-73 024.060	3 595 422.150				
L157	-77 421.520	3 594 324.690		R157	-74 392.270	3 595 095.600				
L158	-77 813.990	3 594 212.100		R158	-75 379.620	3 594 860.160				
L159	-78 144.510	3 594 117.740		R159	-75 800.130	3 594 760.130				
L160	-78 604.490	3 593 985.990		R160	-75 840.100	3 594 750.680				
L161	-79 111.070	3 593 838.350		R161	-75 847.240	3 594 758.320				
L162	-79 833.780	3 593 632.740		R162	-75 853.750	3 594 757.230				
L163	-80 181.550	3 593 533.260		R163	-75 860.370	3 594 745.800				
L164	-80 437.740	3 593 459.710		R164	-75 974.390	3 594 718.480				
L165	-80 438.770	3 593 459.420		R165	-76 481.770	3 594 597.490				
L166	-80 592.010	3 593 416.010		R166	-76 977.420	3 594 478.040				
L167	-81 031.590	3 593 290.010		R167	-77 434.020	3 594 346.770				
L168	-81 395.550	3 593 185.460		R168	-77 839.900	3 594 230.910				
L169	-81 774.240	3 593 077.090		R169	-78 151.270	3 594 141.820				
L170	-81 806.050	3 593 069.150		R170	-78 603.730	3 594 012.140				
L171	-81 901.980	3 593 045.250		R171	-79 116.220	3 593 865.640				
L172	-81 985.090	3 593 035.490		R172	-79 845.120	3 593 655.540				
L173	-82 077.230	3 593 034.670		R173	-80 193.410	3 593 555.780				
L174	-82 166.160	3 593 042.260		R174	-80 444.800	3 593 483.950				
L175	-82 174.990	3 593 034.170		R175	-80 577.920	3 593 445.870				
L176	-82 206.400	3 593 045.740		R176	-81 269.390	3 593 247.850				
L177	-82 232.070	3 593 048.150		R177	-81 380.860	3 593 216.040				
L178	-82 481.750	3 593 070.240		R178	-81 803.100	3 593 095.220				
L179	-82 682.120	3 593 087.880		R179	-81 907.080	3 593 070.010				
L180	-82 711.210	3 593 090.530		R180	-81 986.240	3 593 060.610				
L181	-82 832.180	3 593 101.340		R181	-82 074.600	3 593 060.010				
L182	-83 178.380	3 593 132.000		R182	-82 222.150	3 593 072.690				
L183	-83 415.070	3 593 153.020		R183	-82 610.020	3 593 107.060				
L184	-83 596.410	3 593 169.120		R184	-82 609.980	3 593 141.650				
L185	-83 998.240	3 593 204.540		R185	-82 628.890	3 593 142.260				
L186	-84 403.210	3 593 240.390		R186	-82 623.430	3 593 108.040				
L187	-84 773.600	3 593 273.230		R187	-82 680.430	3 593 113.160				
L188	-84 812.820	3 593 276.710		R188	-82 835.190	3 593 127.080				
L189	-85 277.960	3 593 317.640		R189	-83 152.170	3 593 154.970				
L190	-85 306.350	3 593 320.170		R190	-83 463.670	3 593 182.720				
L191	-85 801.070	3 593 364.170		R191	-83 595.740	3 593 194.400				
L192	-86 348.680	3 593 412.550		R192	-83 881.460	3 593 219.580				
L193	-86 783.010	3 593 451.160		R193	-83 998.370	3 593 229.880				
L194	-86 972.700	3 593 466.720		R194	-84 094.100	3 593 238.350				
L195	-87 085.220	3 593 475.930		R195	-84 379.290	3 593 263.580				
L196	-87 247.260	3 593 486.580		R196	-84 810.740	3 593 301.840				
L197	-87 702.780	3 593 512.810		R197	-85 324.900	3 593 347.160				
L198	-88 029.550	3 593 531.790		R198	-86 349.140	3 593 437.880				
L199	-88 490.520	3 593 558.380		R199	-86 783.520	3 593 476.250				
L200	-88 760.020	3 593 573.890		R200	-87 063.630	3 593 499.380				
L201	-89 383.500	3 593 609.960		R201	-87 247.050	3 593 511.710				
L202	-90 050.680	3 593 648.440		R202	-87 730.680	3 593 539.610				
L203	-90 517.900	3 593 675.540		R203	-88 028.930	3 593 556.740				
L204	-90 977.320	3 593 701.990		R204	-88 496.750	3 593 583.840				
					Vel	20	Van	21	P695/08	
					Sheet		of			

PADRESERWE KOÖRDINATE / ROAD RESERVE CO-ORDINATES								
LINKERKANT/LEFT HAND SIDE					REGTERKANT/RIGHT HAND SIDE			
	Y	X	WG 23°		Y	X		
L205	-91	417.880	3 593	727.390	R205	-88	753.830	3 593 598.880
L206	-91	785.680	3 593	748.730	R206	-88	960.000	3 593 610.570
L207	-92	168.250	3 593	770.730	R207	-89	422.740	3 593 637.190
L208	-92	624.980	3 593	797.110	R208	-89	896.830	3 593 664.600
L209	-93	058.490	3 593	822.060	R209	-90	053.940	3 593 673.500
L210	-93	472.570	3 593	845.900	R210	-90	511.930	3 593 700.210
L211	-93	905.780	3 593	870.940	R211	-91	420.340	3 593 752.670
L212	-94	319.430	3 593	894.790	R212	-91	742.410	3 593 771.170
L213	-94	729.720	3 593	918.480	R213	-92	180.910	3 593 796.840
L214	-95	219.580	3 593	946.950	R214	-92	619.830	3 593 822.120
L215	-95	498.750	3 593	962.820	R215	-93	047.610	3 593 846.510
L216	-95	903.390	3 593	986.290	R216	-93	472.590	3 593 871.570
L217	-95	997.670	3 593	993.590	R217	-93	906.010	3 593 896.500
L218	-96	065.780	3 593	998.950	R218	-94	313.660	3 593 919.660
L219	-96	148.810	3 594	008.830	R219	-94	725.770	3 593 943.450
L220	-96	180.460	3 594	016.400	R220	-95	222.560	3 593 972.210
L221	-96	256.750	3 594	025.410	R221	-95	499.380	3 593 988.350
L222	-96	305.920	3 594	034.390	R222	-95	824.830	3 594 007.190
L223	-96	319.130	3 594	037.320	R223	-95	903.060	3 594 011.470
L224	-96	405.703	3 594	064.661	R224	-95	994.220	3 594 018.810
L225	-96	595.470	3 594	103.930	R225	-96	066.020	3 594 024.260
L226	-96	651.810	3 594	118.300	R226	-96	150.800	3 594 034.480
L227	-97	055.790	3 594	223.790	R227	-96	182.730	3 594 039.520
L228	-97	481.990	3 594	335.140	R228	-96	252.845	3 594 063.193
L229	-98	066.550	3 594	487.680	R229	-96	296.773	3 594 063.615
L230	-98	416.540	3 594	579.230	R230	-96	405.250	3 594 083.660
L231	-98	443.080	3 594	558.610	R231	-96	516.120	3 594 108.900
L232	-98	608.750	3 594	609.770	R232	-96	606.460	3 594 132.460
L233	-98	784.656	3 594	663.566	R233	-96	647.410	3 594 143.140
					R234	-97	052.570	3 594 248.930
					R235	-98	066.650	3 594 514.150
					R236	-98	421.930	3 594 606.540
					R237	-98	535.700	3 594 636.050
					R238	-98	582.366	3 594 648.102
					R239	-98	618.581	3 594 674.346
					R240	-98	645.782	3 594 665.014
					R241	-98	776.743	3 594 698.315

Vel	21	Van	21	P695/08
Sheet		of		



Looking for out of print issues of  
Government and Provincial  
Gazettes

We can provide photocopies

**Contact**

The National Library of South Africa,  
Pretoria Campus  
PO Box 397  
0001 PRETORIA

**Physical address**

C/o Andries and Proes Streets  
Entrance in Proes Street

**Contact details**

Tel: (012) 401 9700

E-mail: [infodesk@nlsa.ac.za](mailto:infodesk@nlsa.ac.za)



land affairs

Department:  
Land Affairs  
REPUBLIC OF SOUTH AFRICA

# Surveys & Mapping

*Surveys and Mapping is South Africa's national survey and mapping organisation providing survey, mapping and geo-spatial products and services to the public and private sectors for over 80 years*

## Products and Services

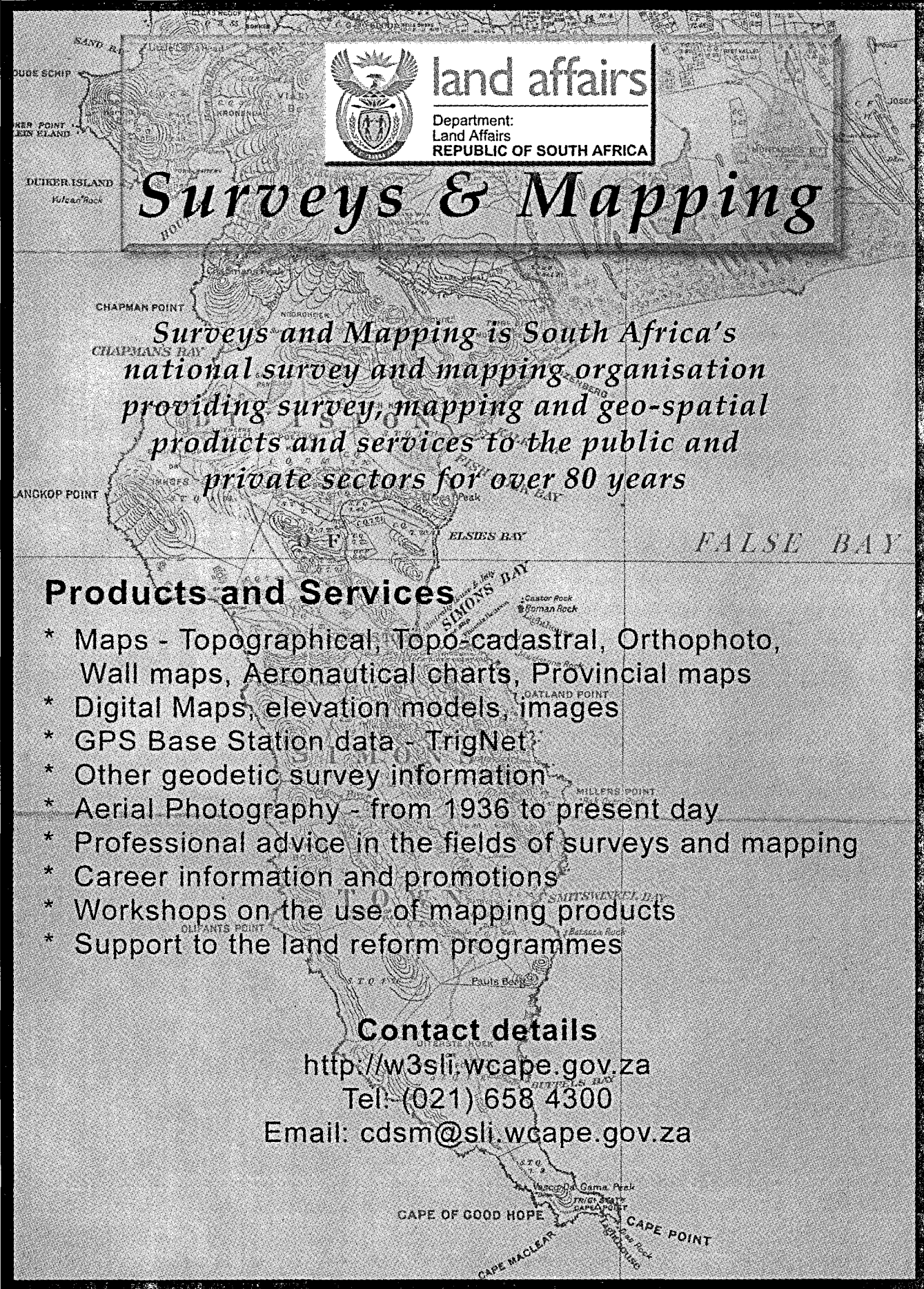
- \* Maps - Topographical, Topo-cadastral, Orthophoto, Wall maps, Aeronautical charts, Provincial maps
- \* Digital Maps, elevation models, images
- \* GPS Base Station data - TrigNet
- \* Other geodetic survey information
- \* Aerial Photography - from 1936 to present day
- \* Professional advice in the fields of surveys and mapping
- \* Career information and promotions
- \* Workshops on the use of mapping products
- \* Support to the land reform programmes

## Contact details

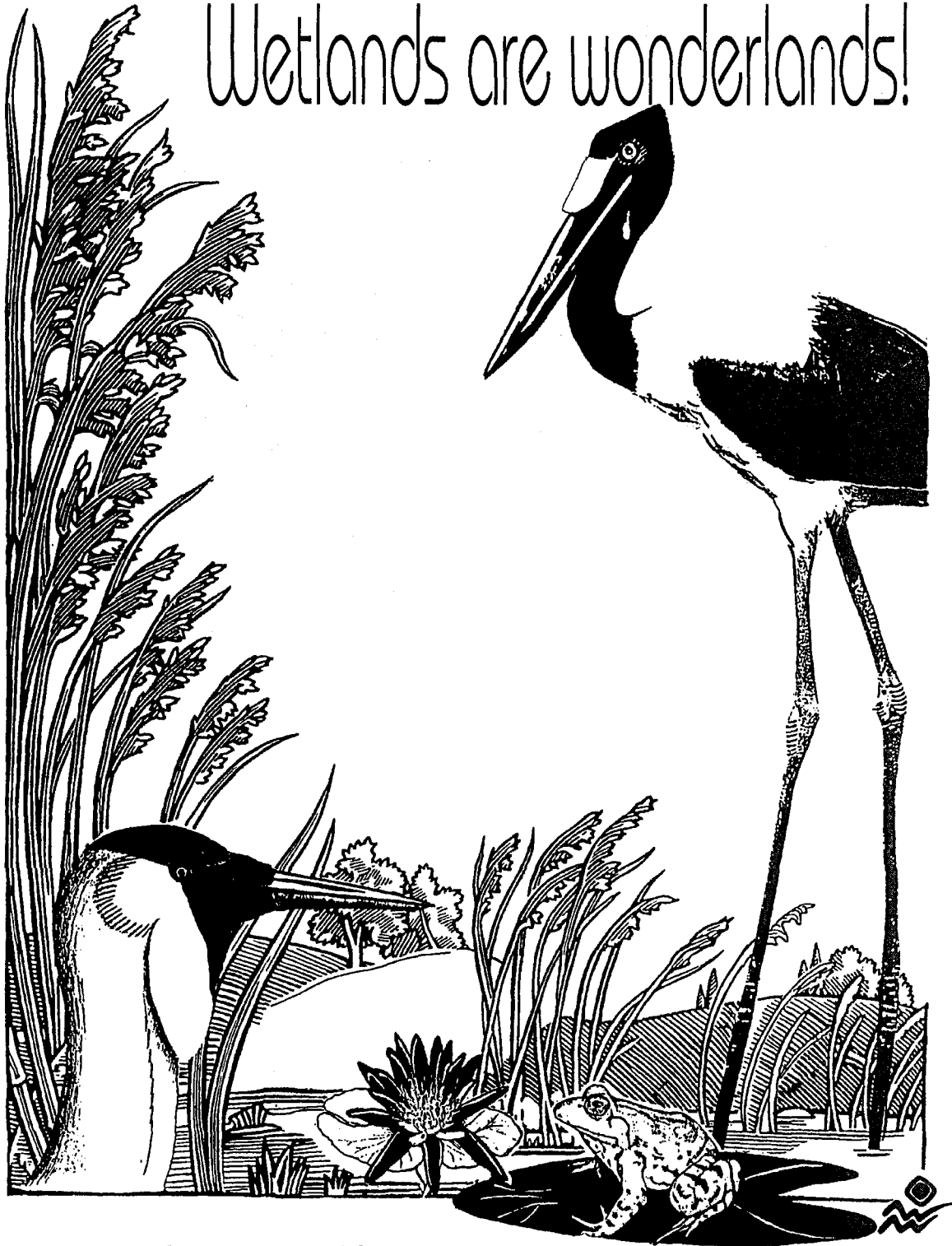
<http://w3sli.wcape.gov.za>

Tel: (021) 658 4300

Email: [cdsm@sli.wcape.gov.za](mailto:cdsm@sli.wcape.gov.za)

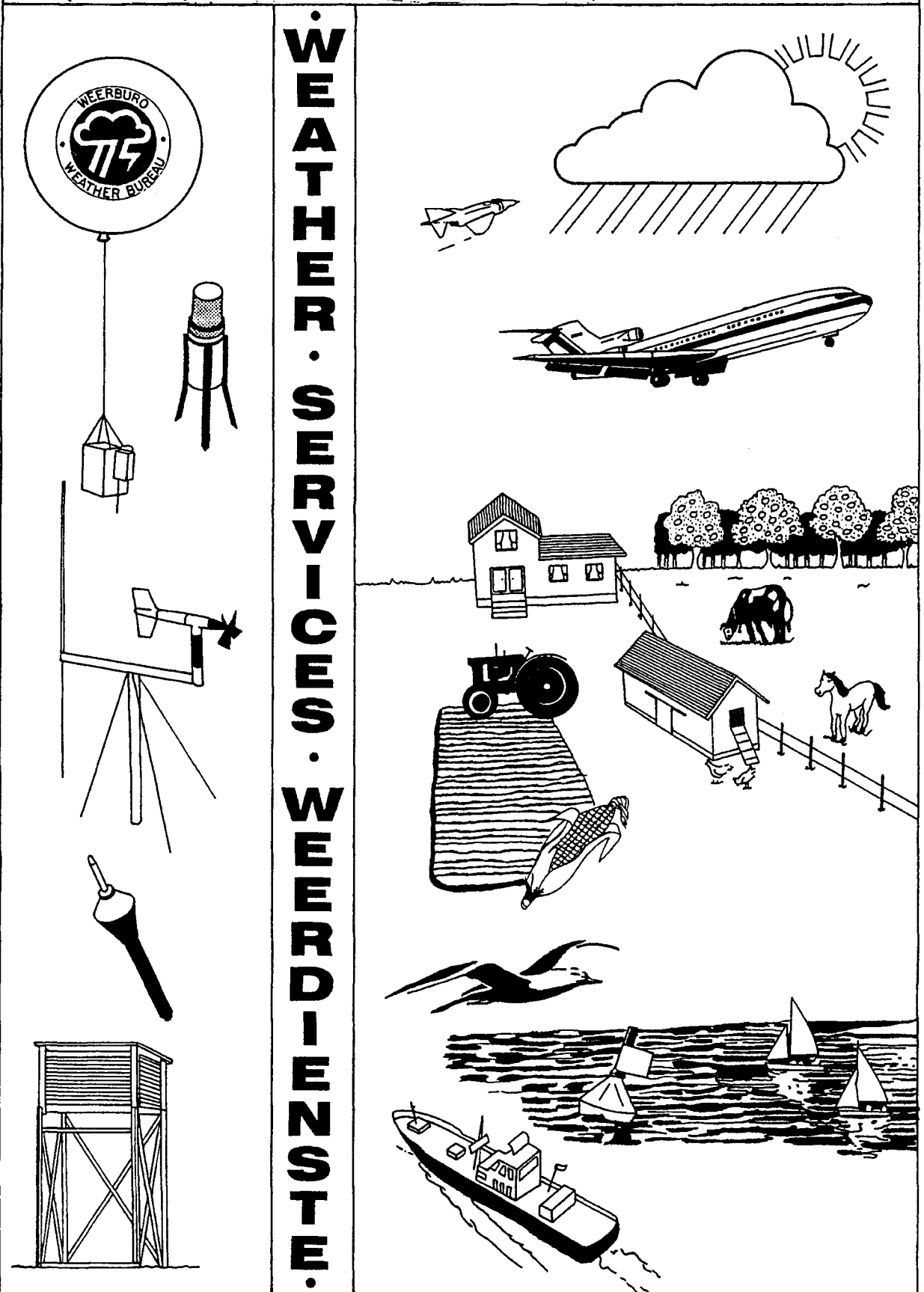


# Wetlands are wonderlands!



Department of Environmental Affairs and Tourism

# SA WEATHER BUREAU SA WEERBURO



DEPT. OF ENVIRONMENTAL AFFAIRS AND TOURISM • DEPT. VAN OMGEWINGSAKE EN TOERISME

# THE WEATHER BUREAU HELPS FARMERS TO PLAN THEIR CROP



THE WEATHER BUREAU: DEPARTMENT OF ENVIRONMENTAL AFFAIRS & TOURISM  
DIE WEERBURU: DEPARTEMENT VAN OMGEWINGSAKE EN TOERISME



THE WEATHER BUREAU: DEPARTMENT OF ENVIRONMENTAL AFFAIRS AND TOURISM

Printed by and obtainable from the Government Printer, Bosman Street, Private Bag X85, Pretoria, 0001  
Publications: Tel: (012) 334-4508, 334-4509, 334-4510  
Advertisements: Tel: (012) 334-4673, 334-4674, 334-4504  
Subscriptions: Tel: (012) 334-4735, 334-4736, 334-4737  
Cape Town Branch: Tel: (021) 465-7531

Gedruk deur en verkrygbaar by die Staatsdrukker, Bosmanstraat, Privaatsak X85, Pretoria, 0001  
Publikasies: Tel: (012) 334-4508, 334-4509, 334-4510  
Advertensies: Tel: (012) 334-4673, 334-4674, 334-4504  
Subskripsies: Tel: (012) 334-4735, 334-4736, 334-4737  
Kaapstad-tak: Tel: (021) 465-7531