

IMPORTANT NOTICE

The Government Printing Works will not be held responsible for faxed documents not received due to errors on the fax machine or faxes received which are unclear or incomplete. Please be advised that an "OK" slip, received from a fax machine, will not be accepted as proof that documents were received by the GPW for printing. If documents are faxed to the GPW it will be the sender's responsibility to phone and confirm that the documents were received in good order.

Furthermore the Government Printing Works will also not be held responsible for cancellations and amendments which have not been done on original documents received from clients.

CONTENTS**INHOUD**

<i>No.</i>	<i>Page No.</i>	<i>Gazette No.</i>	<i>No.</i>	<i>Bladsy No.</i>	<i>Koerant No.</i>
GOVERNMENT NOTICE			GOEWERMENSKENNISGEWING		
Transport, Department of			Vervoer, Departement van		
<i>Government Notice</i>			<i>Goewermenskennisgewing</i>		
905			905		
South African National Roads Agency Limited and the National Roads Act (7/1998): The South African National Roads Agency Limited: Declaration amendment of National Road N14 Section 3: Amendment of Declaration No. 629 of 2005	3	33631	Suid-Afrikaanse Nasionale Padagentskap Beperk en die Nasionale Paaie Wet (7/1998): Die Suid-Afrikaanse Nasionale Padagentskap Beperk: Verklaring wysiging van Nasionale Pad N14 Seksie 3: Wysiging van Verklaring No. 629 van 2005	4	33631

GOVERNMENT NOTICE

DEPARTMENT OF TRANSPORT

No. 905

15 October 2010

**THE SOUTH AFRICAN NATIONAL ROADS
AGENCY LIMITED**

Registration No: 98/09584/06

DECLARATION AMENDMENT OF NATIONAL ROAD N14 SECTION 3

AMENDMENT OF DECLARATION No. 629 OF 2005

By virtue of section 40(1)(b) of the South African National Roads Agency Limited and the National Roads Act, 1998 (Act No. 7 of 1998), I hereby amend Declaration No. 629 of 2005, by substituting the descriptive section of the route from Kakamas up to Keimoes, with the subjoined sheets 1 to 18 of Plan No. P764/09.

(National Road N14 Section 3: Kakamas – Keimoes)



MINISTER OF TRANSPORT

GOEWERMENTSKENNISGEWING

DEPARTEMENT VAN VERVOER

No. 905

15 Oktober 2010

**DIE SUID-AFRIKAANSE NASIONALE
PADAGENTSKAP BEPERK**

Registrasie No: 98/09584/06

VERKLARING WYSIGING VAN NASIONALE PAD N14 SEKSIE 3

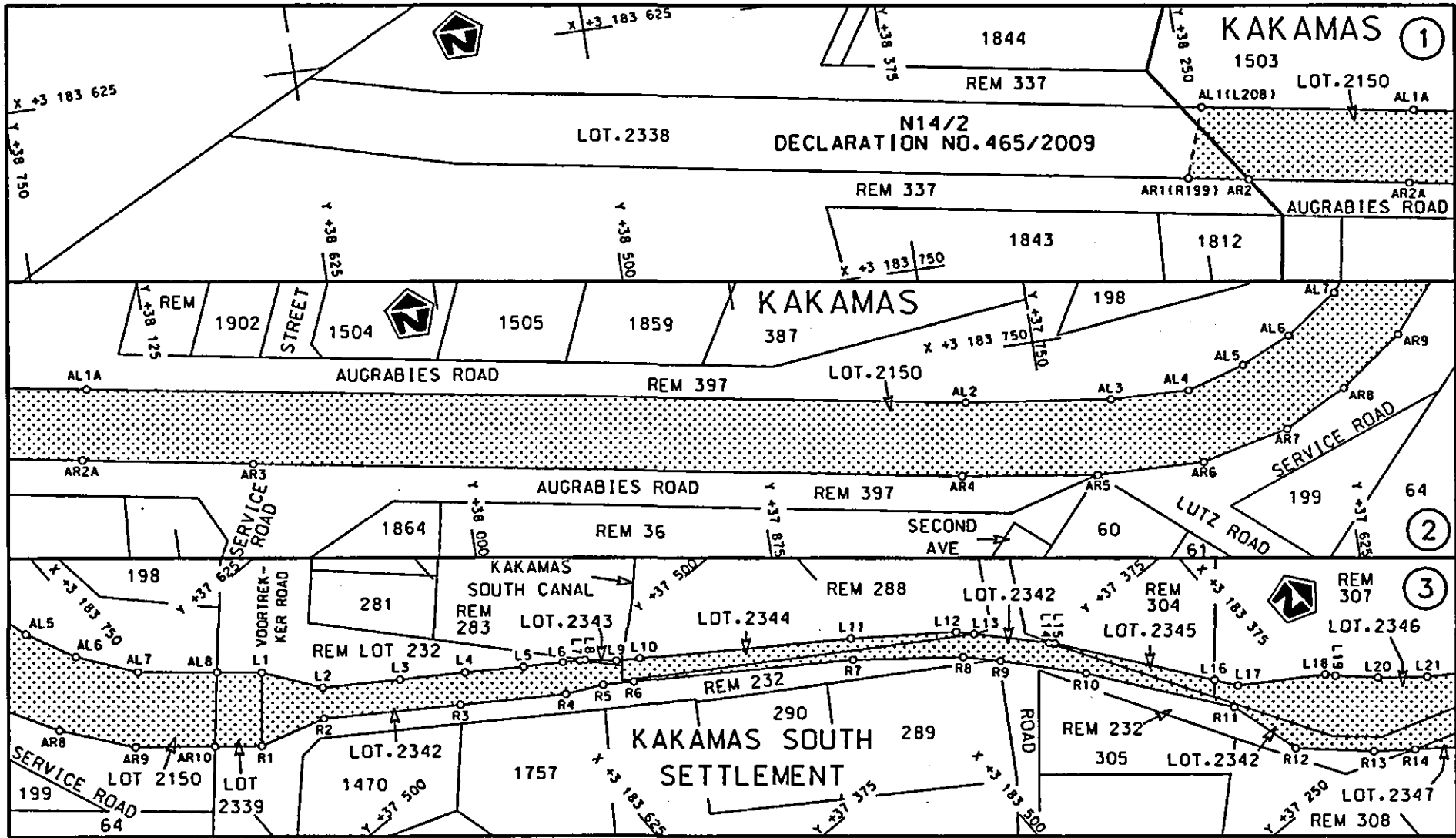
WYSIGING VAN VERKLARING NO. 629 VAN 2005

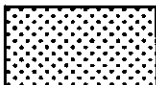
Kragtens Artikel 40(1)(b) van die Suid Afrikaanse Nasionale Padagentskap Beperk en die Nasionale Paaie Wet, 1998 (Wet no. 7 van 1998), wysig ek hiermee Verklaring no. 629 van 2005, deur die beskrywende gedeelte van die roete vanaf Kakamas tot by Keimoes, te vervang met meegaande velle 1 tot 18 van Plan no. P764/09

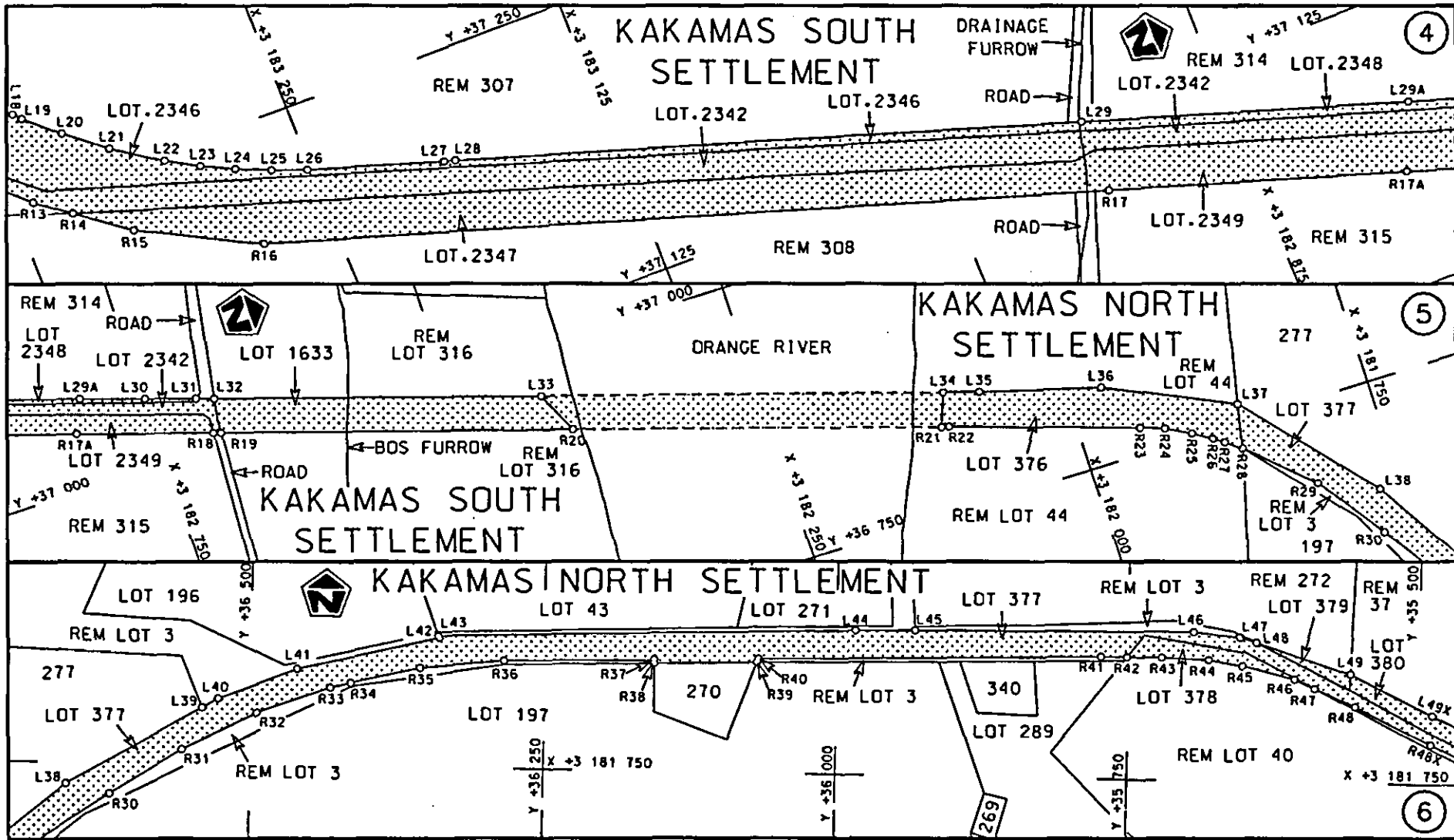
(Nasionale Pad N14 Seksie 3: Kakamas – Keimoes)

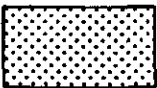


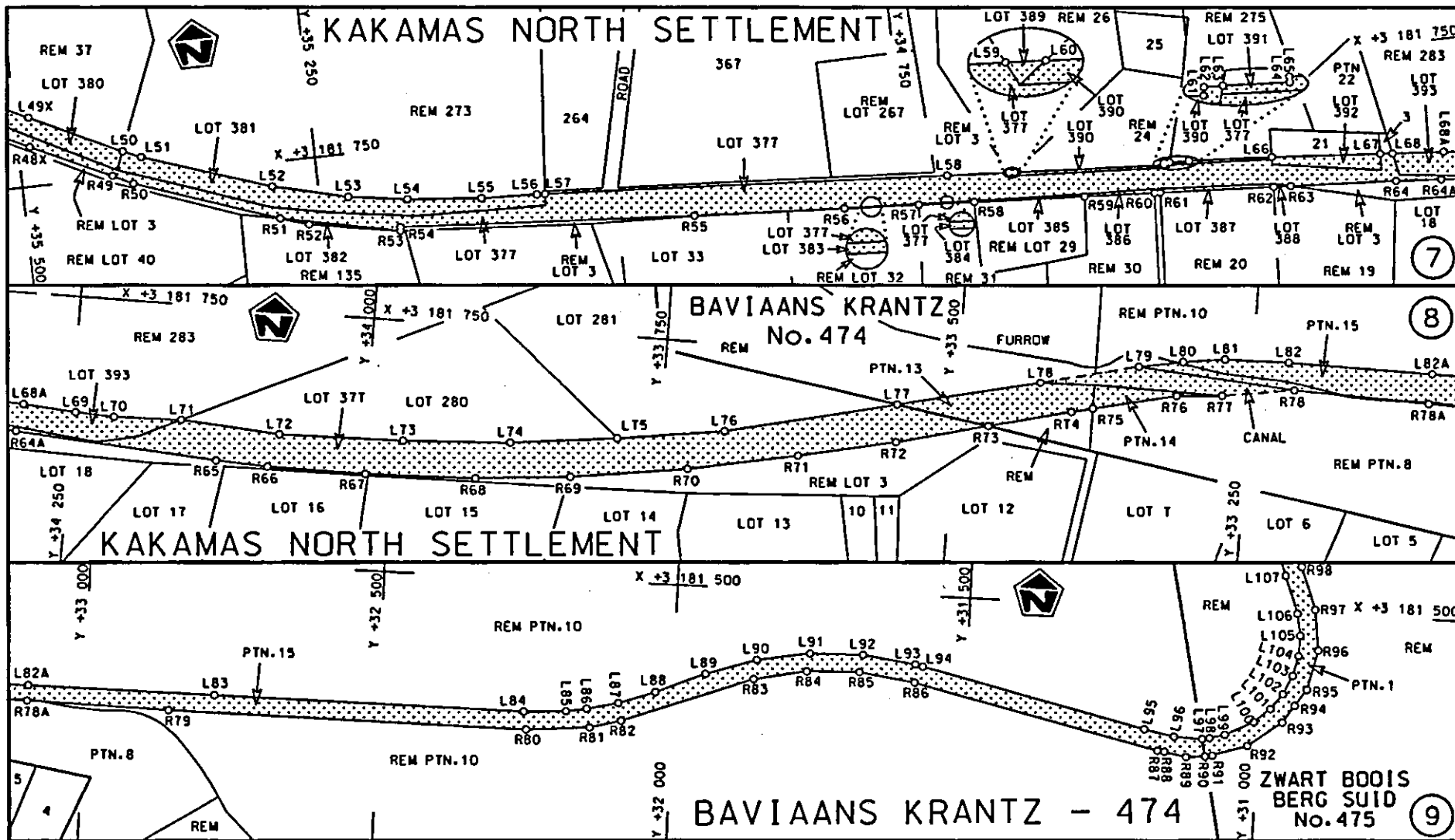
MINISTER VAN VERVOER

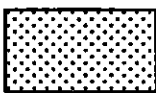


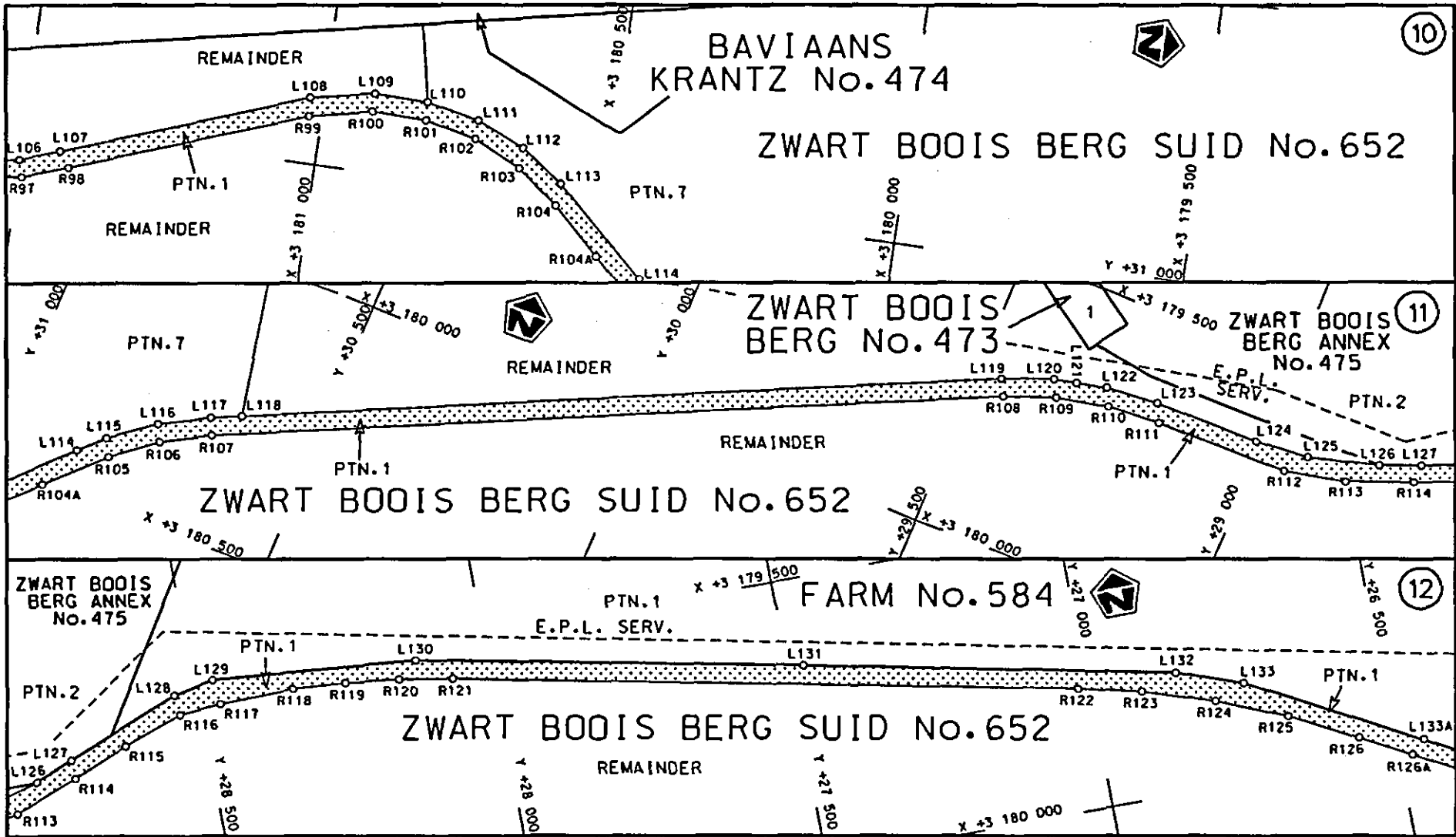
Die Suid Afrikaanse Nasionale Padagentskap Beperk The South African National Roads Agency Limited	Die figuur getoon The figure shown		steldie padreserwe voor van 'n gedeelte represents the road reserve of a portion van Nasionale Roete N14 Seksie 3 of National Route N14 Section 3	Vel Sheet 1 van 18 Plan P764/09
--	---------------------------------------	--	--	------------------------------------

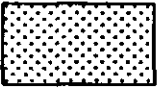


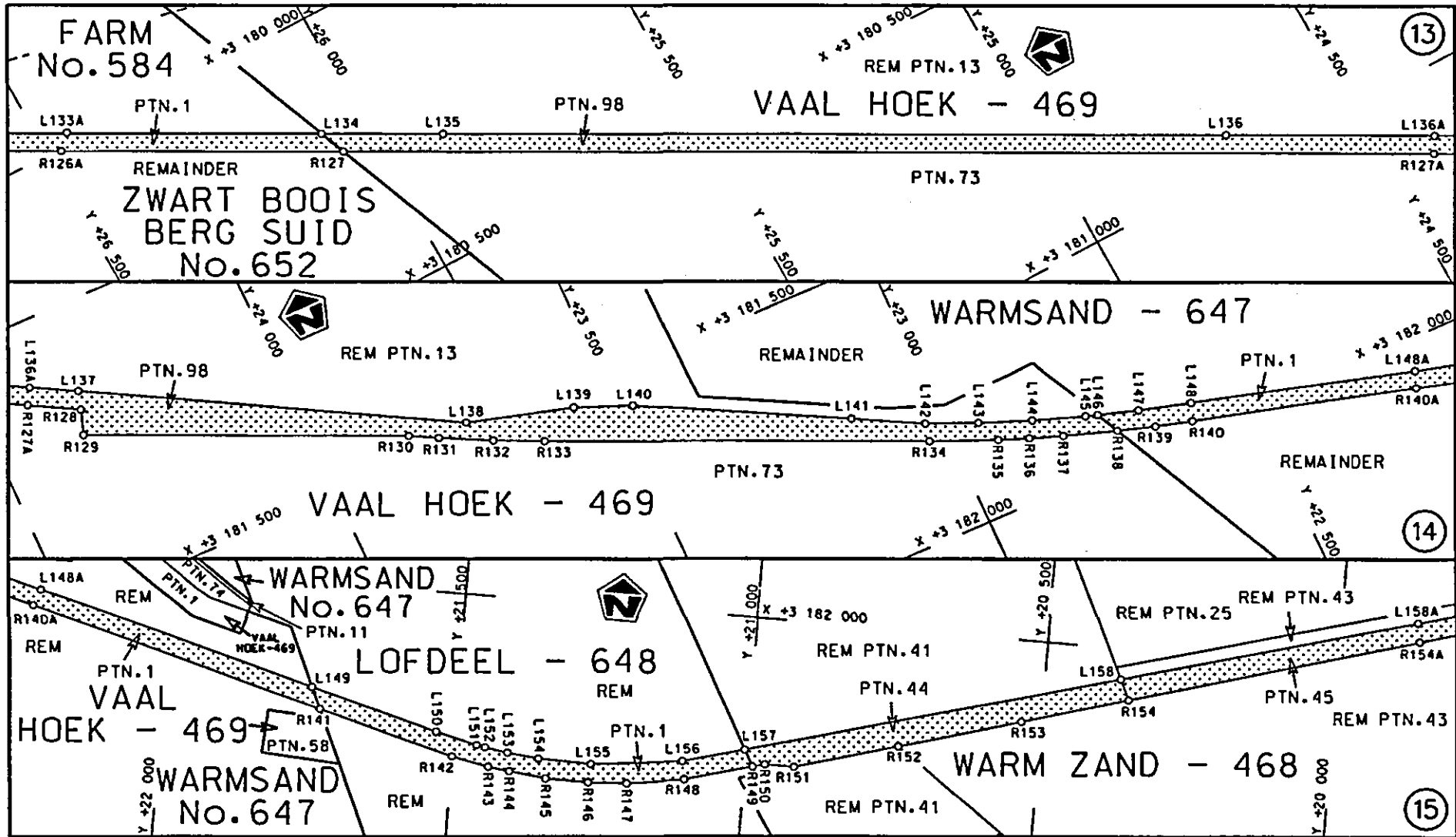
<p>Die Suid Afrikaanse Nasionale Padagentskap Beperk The South African National Roads Agency Limited</p>	<p>Die figuur getoon The figure shown</p> 	<p>steldie padreserve voor van 'n gedeelte represents the road reserve of a portion van Nasionale Roete N14 Sektie 3 of National Route N14 Section 3</p>	<p>Vel Sheet 2 van 18 of Plan P764/09</p>
--	--	--	---



<p>Die Suid Afrikaanse Nasionale Padagentskap Beperk The South African National Roads Agency Limited</p>	<p>Die figuur getoon The figure shown</p> 	<p>steldie padreserwe voor van 'n gedeelte represents the road reserve of a portion van Nasionale Roete N14 Seksie Section 3 of National Route</p>	<p>Vel Sheet 3 von 18 of 18 Plan P764/09</p>
--	--	--	--

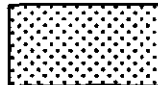


<p>Die Suid Afrikaanse Nasionale Padagentskap Beperk The South African National Roads Agency Limited</p>	<p>Die figuur getoon The figure shown</p> 	<p>steldie padreserwe voor van 'n gedeelte represents the road reserve of a portion van Nasionale Roete N14 Sektie 3 of National Route Section 3</p>	<p>Vel Sheet 4 van 18 Plan P764/09</p>
--	--	--	--



Die Suid Afrikaanse Nasionale Padagentskap Beperk
The South African National Roads Agency Limited

Die figuur getoon
The figure shown

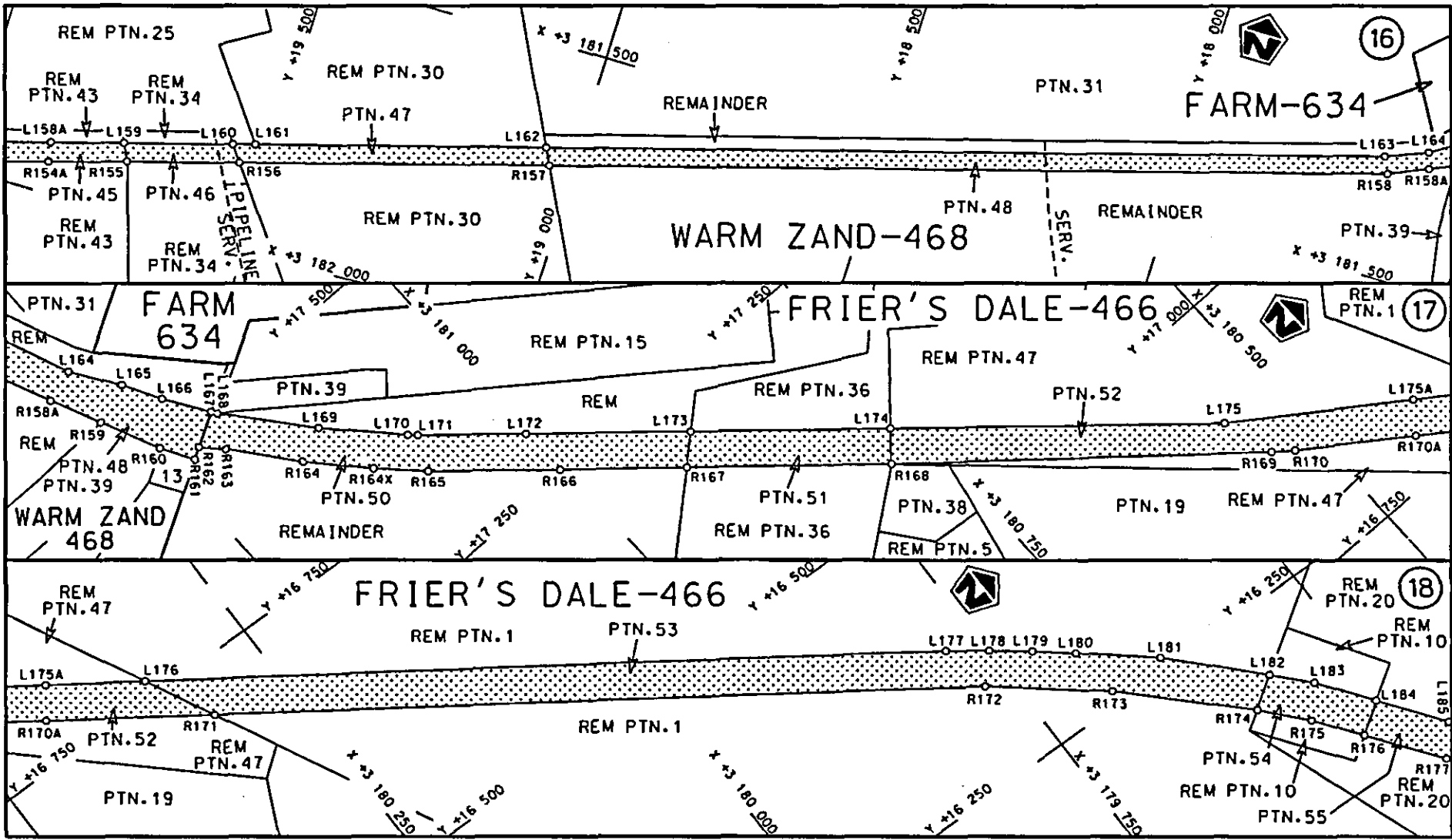


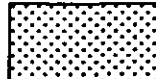
steldie padreserwe voor van 'n gedeelte
represents the road reserve of a portion
van Nasionale Roete N14 Seksie
of National Route N14 Section

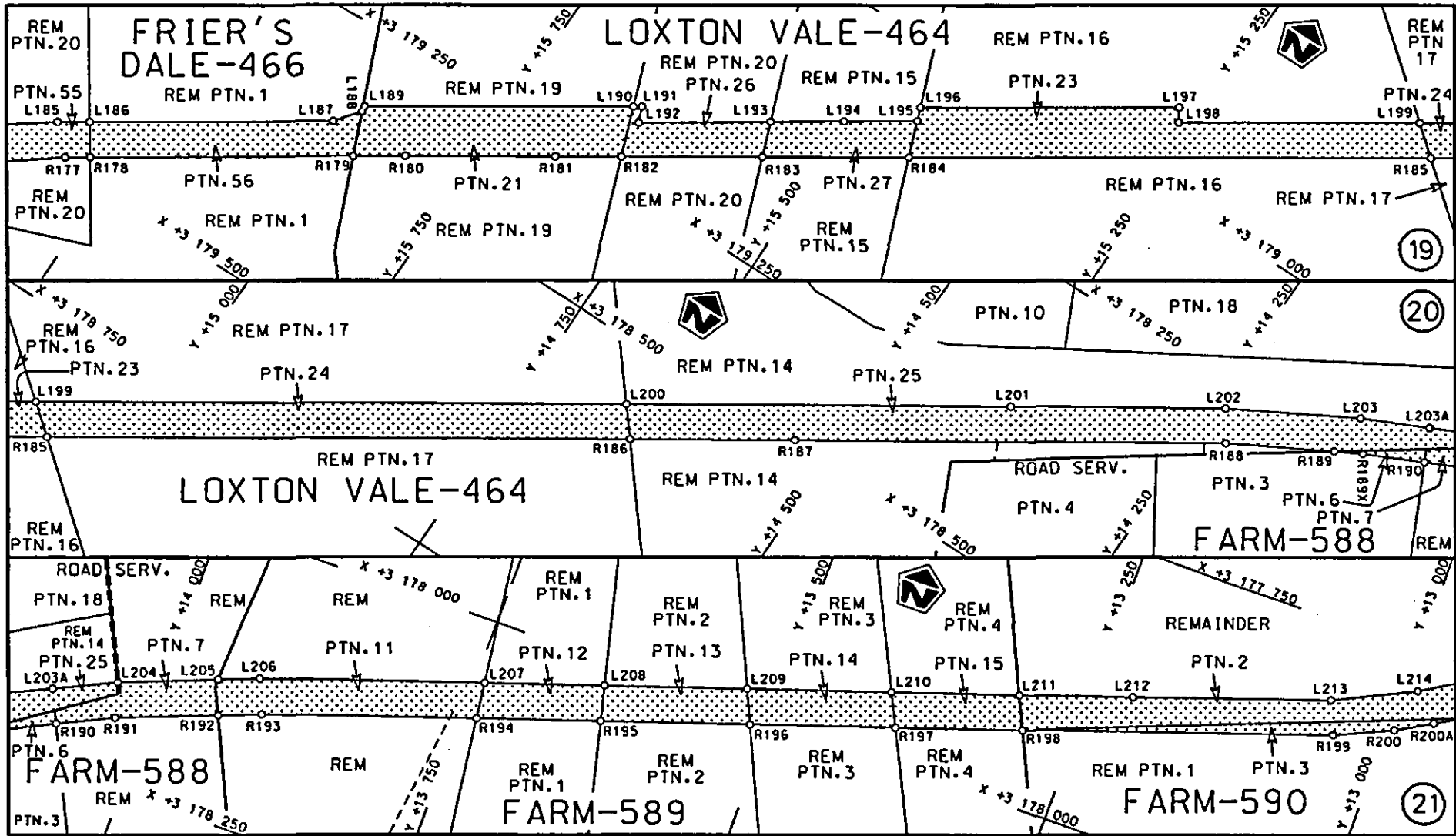
3

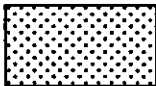
Vel Sheet 5 van of 18

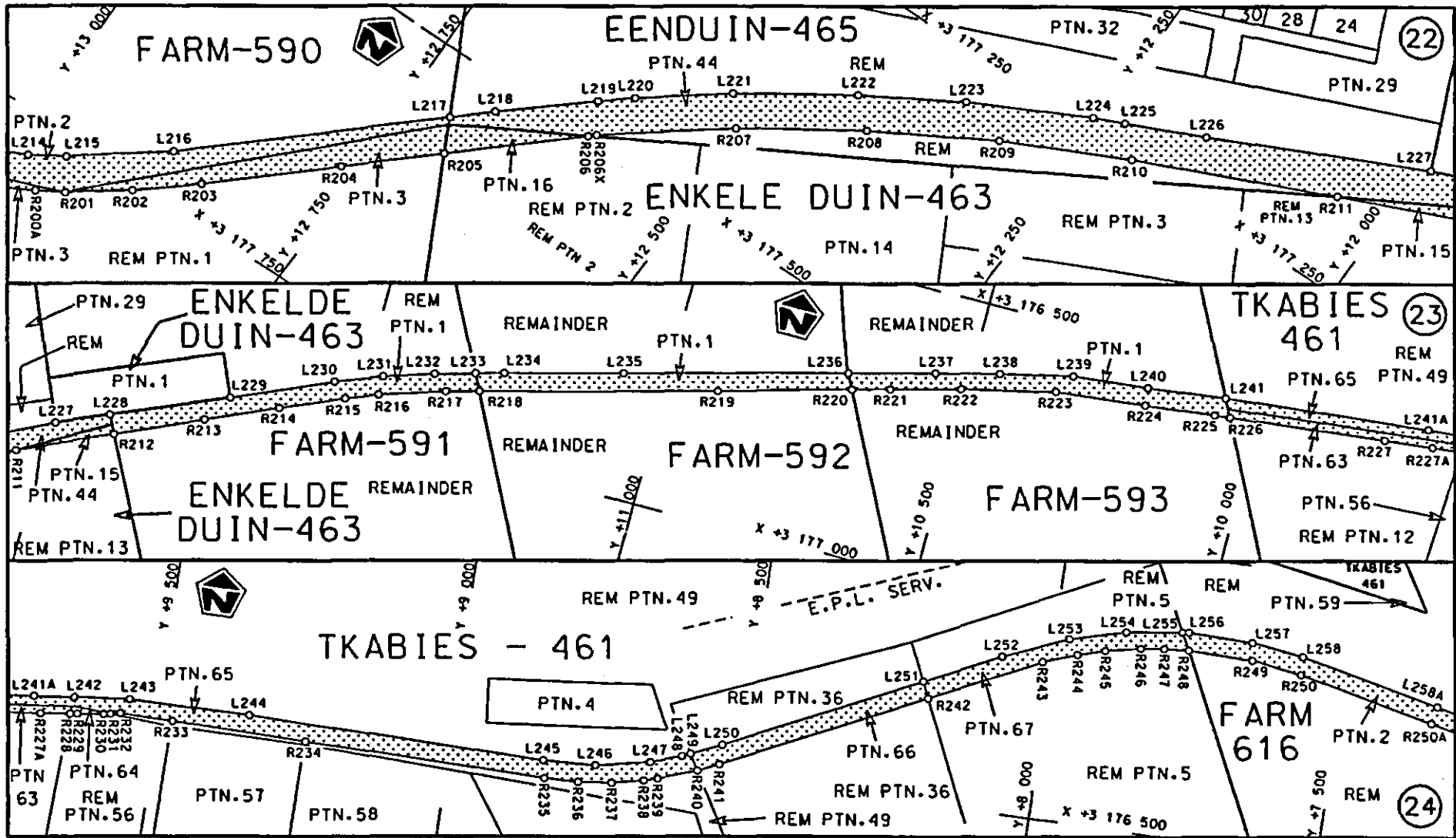
Plan P764/09

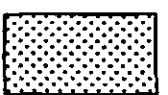


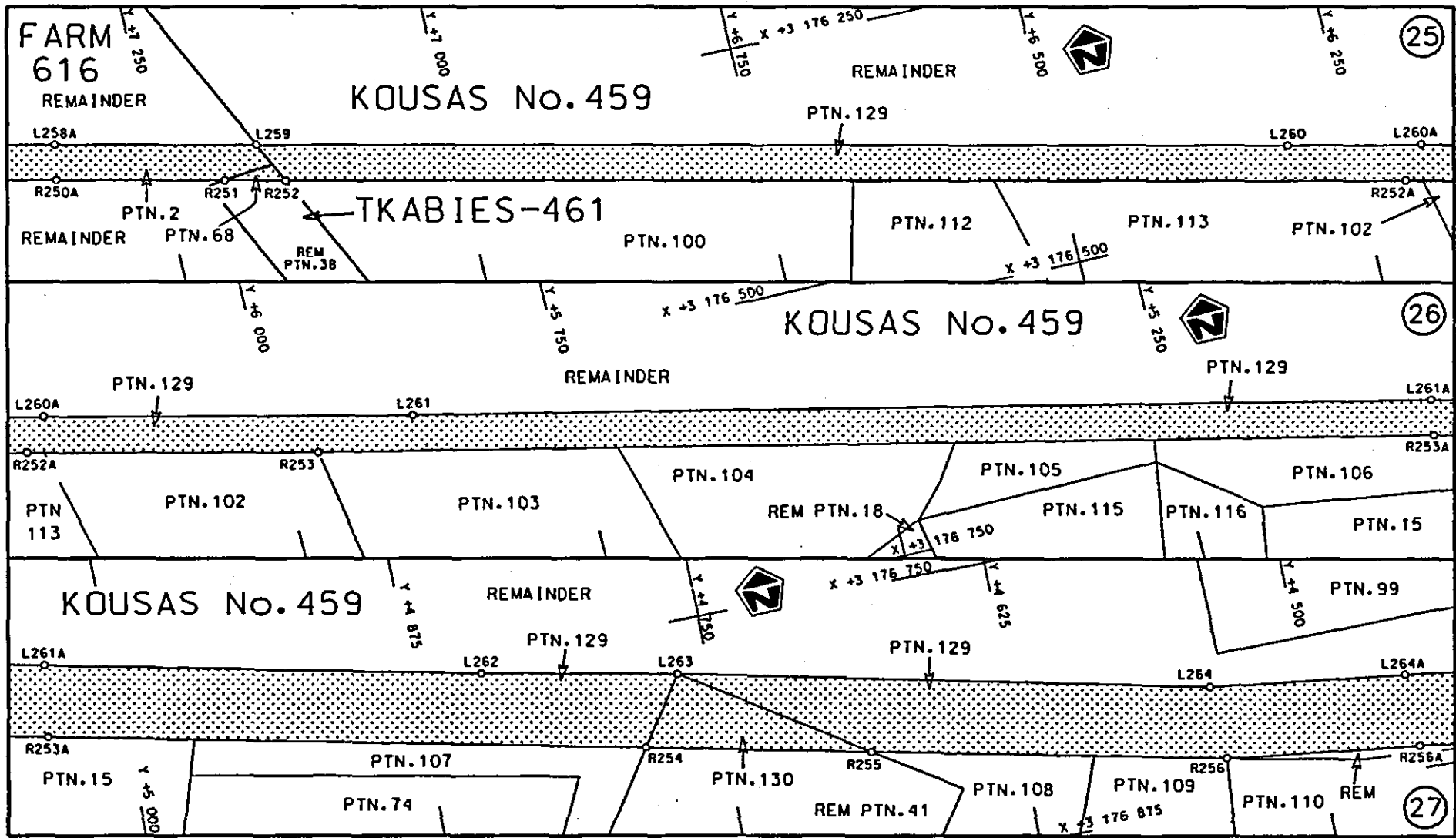
<p>Die Suid Afrikaanse Nasionale Padagentskap Beperk The South African National Roads Agency Limited</p>	<p>Die figuur getoon The figure shown</p>	 <p>steldie padreserwe voor van 'n gedeelte represents the road reserve of a portion van Nasionale Roete N14 Seksie Section 3</p>	<p>Vel Sheet 6 van of 18 Plan P764/09</p>
--	---	---	---

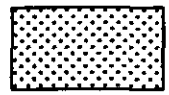


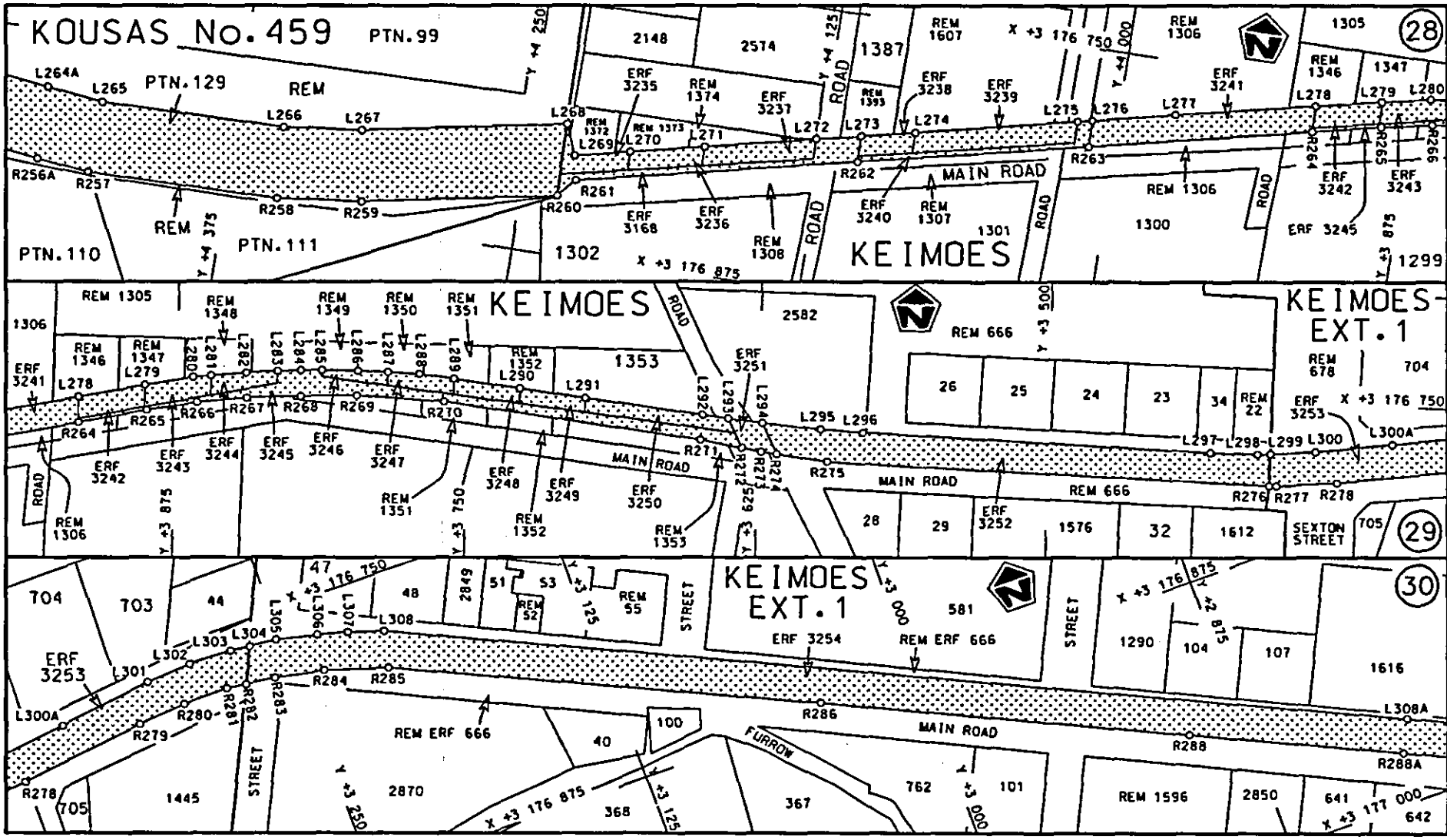
<p>Die Suid Afrikaanse Nasionale Padagentskap Beperk The South African National Roads Agency Limited</p>	<p>Die figuur getoon The figure shown</p>	 <p>steldie padreserwe voor van 'n gedeelte represents the road reserve of a portion van Nasionale Roete N14 Seksie 3 of National Route</p>	<p>Vel Sheet 7 van 18 Plan P764/09</p>
--	---	---	--

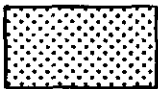


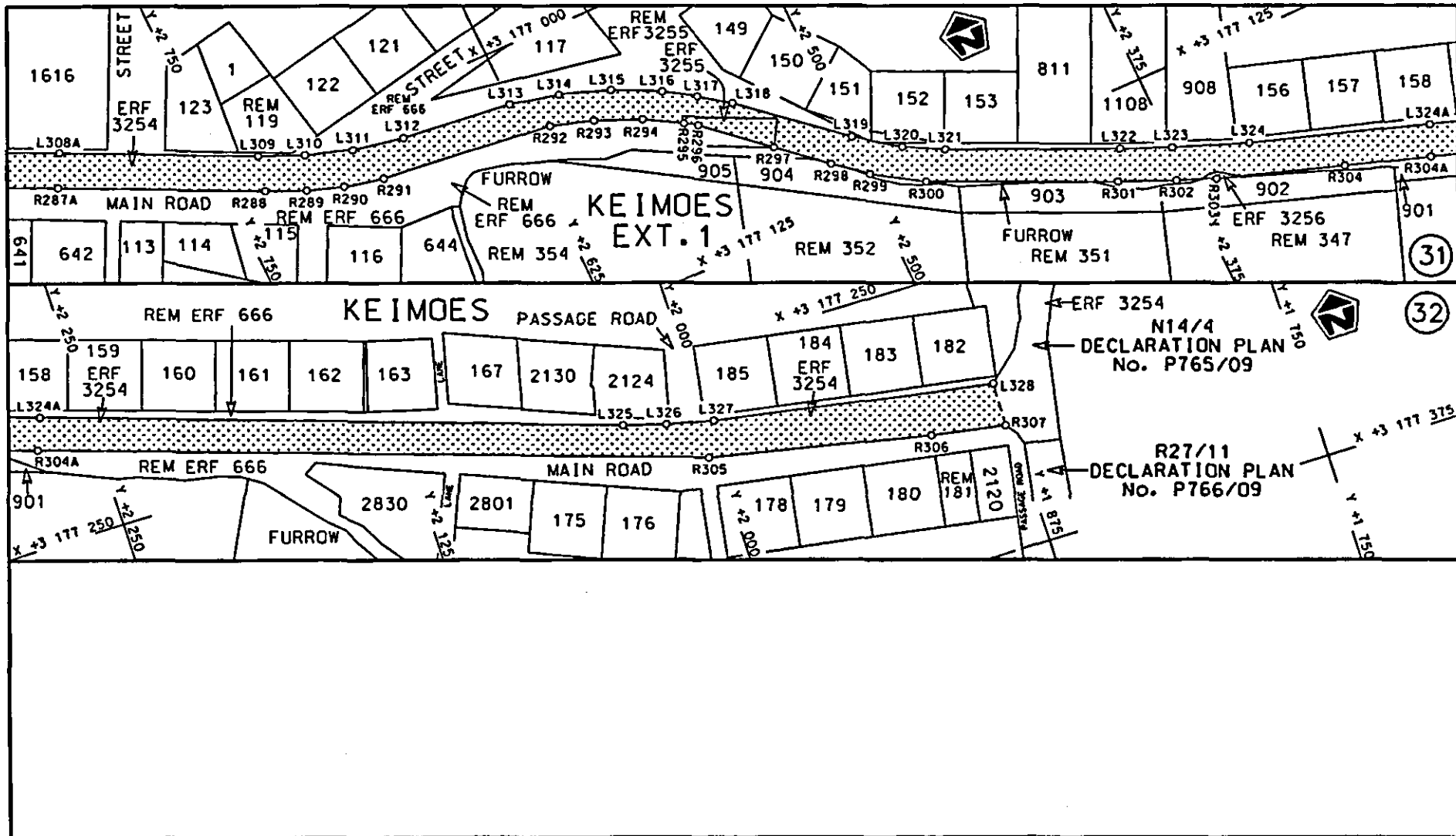
<p>Die Suid Afrikaanse Nasionale Padogenskap Beperk The South African National Roads Agency Limited</p>	<p>Die figuur getoon The figure shown</p>		<p>stel die padreserwe voor van 'n gedeelte represents the road reserve of a portion van Nasionale Roete N14 Seksie 3 of National Route</p>	<p>Vel Sheet 8 van 18 Plan P764/09</p>
---	---	--	---	--



Die Suid Afrikaanse Nasionale Padagentskap Beperk The South African National Roads Agency Limited	Die figuur getoon The figure shown		steldie padreserwe voor van 'n gedeelte represents the road reserve of a portion van Nasionale Roete of National Route	Vel Sheet 9 van of 18 Plan P764/09
			N14 Seksie 3	

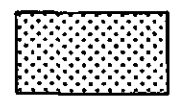


<p>Die Suid Afrikaanse Nasionale Padagentskap Beperk The South African National Roads Agency Limited</p>	<p>Die figuur getoon The figure shown</p>	 <p>stel die padreserwe voor van 'n gedeelte represents the road reserve of a portion von Nasionale Roete N14 of National Route N14</p>	<p>Vel Sheet 10 van 18 of 18</p>
<p>Seksie 3</p>			<p>Plan P764/09</p>



Die Suid Afrikaanse Nasionale Padogentskap Beperk
The South African National Roads Agency Limited

Die figuur getoon
The figure shown



steld die padreserwe voor van 'n gedeelte
represents the road reserve of a portion
van Nasionale Roete N14 Sektie
of National Route N14 Section

3

Vel Sheet 11 van of 18
Plan P764/09

PADRESERWE KOÖRDINATE / ROAD RESERVE CO-ORDINATES						
LINKERKANT/LEFT HAND SIDE				REGTERKANT/RIGHT HAND SIDE		
	Y	X	WG 21°		Y	X
AL1	38 243.000	3 183 696.900		AR1	38 253.370	3 183 727.150
AL2	37 782.320	3 183 772.450		AR2	38 227.710	3 183 731.460
AL3	37 720.380	3 183 780.040		AR3	38 087.740	3 183 755.060
AL4	37 686.910	3 183 780.660		AR4	37 788.650	3 183 804.360
AL5	37 662.150	3 183 773.080		AR5	37 731.010	3 183 812.290
AL6	37 640.850	3 183 763.040		AR6	37 685.170	3 183 813.250
AL7	37 618.610	3 183 747.050		AR7	37 647.550	3 183 804.020
AL8	37 596.750	3 183 721.540		AR8	37 620.760	3 183 789.430
L1	37 584.290	3 183 707.010		AR9	37 594.150	3 183 769.310
L2	37 562.520	3 183 691.490		AR10	37 572.500	3 183 743.210
L3	37 543.880	3 183 664.140		R1	37 559.740	3 183 727.840
L4	37 528.290	3 183 641.000		R2	37 551.760	3 183 699.960
L5	37 514.090	3 183 620.320		R3	37 518.800	3 183 651.630
L6	37 504.720	3 183 606.140		R4	37 493.270	3 183 614.120
L7	37 500.590	3 183 600.060		R5	37 486.070	3 183 599.420
L8	37 499.260	3 183 598.100		R6	37 478.710	3 183 588.600
L9	37 490.460	3 183 588.310		R7	37 425.520	3 183 510.590
L10	37 484.890	3 183 580.040		R8	37 395.830	3 183 473.580
L11	37 433.180	3 183 505.290		R9	37 384.260	3 183 462.540
L12	37 406.090	3 183 468.790		R10	37 356.340	3 183 437.990
L13	37 400.520	3 183 463.570		R11	37 304.060	3 183 399.070
L14	37 376.910	3 183 441.440		R12	37 273.180	3 183 390.620
L15	37 374.980	3 183 439.630		R13	37 250.340	3 183 365.820
L16	37 318.540	3 183 397.840		R14	37 239.690	3 183 351.730
L17	37 310.310	3 183 391.750		R15	37 223.400	3 183 330.180
L18	37 289.730	3 183 359.920		R16	37 197.700	3 183 280.820
L19	37 286.500	3 183 356.950		R17	37 088.270	3 182 935.600
L20	37 273.950	3 183 343.380		R18	37 014.350	3 182 702.420
L21	37 260.670	3 183 327.090		R19	37 012.360	3 182 696.150
L22	37 247.100	3 183 307.130		R20	36 921.570	3 182 410.000
L23	37 239.350	3 183 293.680		R21	36 825.810	3 182 109.150
L24	37 232.810	3 183 280.230		R22	36 824.680	3 182 105.570
L25	37 226.560	3 183 266.120		R23	36 772.460	3 181 947.730
L26	37 221.240	3 183 251.780		R24	36 765.060	3 181 927.880
L27	37 203.610	3 183 196.180		R25	36 753.760	3 181 907.160
L28	37 202.080	3 183 191.650		R26	36 743.950	3 181 891.670
L29	37 120.610	3 182 935.490		R27	36 737.890	3 181 883.330
L30	37 061.220	3 182 748.750		R28	36 727.600	3 181 870.390
L31	37 047.440	3 182 707.370		R29	36 678.460	3 181 818.490
L32	37 042.510	3 182 692.560		R30	36 619.200	3 181 777.250
L33	36 957.850	3 182 426.910		R31	36 558.220	3 181 737.440
L34	36 854.250	3 182 098.730		R32	36 494.540	3 181 703.990
L35	36 844.960	3 182 069.310		R33	36 432.210	3 181 680.560
L36	36 816.280	3 181 968.560		R34	36 414.960	3 181 676.030
L37	36 766.260	3 181 861.920		R35	36 356.170	3 181 661.990
L38	36 656.590	3 181 769.150		R36	36 284.740	3 181 654.160
L39	36 540.900	3 181 699.990		R37	36 156.500	3 181 651.260
L40	36 527.490	3 181 691.830		R38	36 156.430	3 181 654.570
L41	36 460.760	3 181 664.570		R39	36 068.320	3 181 652.130
L42	36 340.190	3 181 634.850		R40	36 067.080	3 181 648.930
L43	36 340.660	3 181 633.260		R41	35 773.500	3 181 641.400

Vel	12	Van	18	P764/09
Sheet		of		

PADRESERWE KOÖRDINATE / ROAD RESERVE CO-ORDINATES						
LINKERKANT/LEFT HAND SIDE				REGTERKANT/RIGHT HAND SIDE		
	Y	X	WG 21°		Y	X
L44	35 983.770	3 181 622.360		R42	35 751.100	3 181 641.390
L45	35 932.590	3 181 621.100		R43	35 721.470	3 181 641.380
L46	35 693.940	3 181 618.440		R44	35 681.180	3 181 642.740
L47	35 654.500	3 181 622.230		R45	35 652.170	3 181 647.670
L48	35 640.450	3 181 626.870		R46	35 607.270	3 181 658.780
L49	35 559.180	3 181 653.910		R47	35 589.870	3 181 666.690
L50	35 411.760	3 181 727.200		R48	35 554.670	3 181 682.670
L51	35 396.600	3 181 733.980		R49	35 422.790	3 181 747.880
L52	35 288.750	3 181 771.980		R50	35 405.810	3 181 756.810
L53	35 225.630	3 181 787.990		R51	35 285.130	3 181 800.350
L54	35 175.970	3 181 795.460		R52	35 261.450	3 181 808.350
L55	35 113.350	3 181 801.390		R53	35 184.800	3 181 822.650
L56	35 066.050	3 181 803.310		R54	35 184.480	3 181 819.240
L57	35 059.080	3 181 803.720		R55	34 934.570	3 181 836.350
L58	34 715.880	3 181 824.400		R56	34 806.500	3 181 843.670
L59	34 663.310	3 181 827.410		R57	34 742.970	3 181 847.300
L60	34 658.180	3 181 827.700		R58	34 695.560	3 181 850.010
L61	34 530.940	3 181 834.980		R59	34 601.250	3 181 855.390
L62	34 530.660	3 181 832.850		R60	34 541.720	3 181 858.770
L63	34 525.950	3 181 833.010		R61	34 536.790	3 181 859.050
L64	34 509.410	3 181 834.160		R62	34 439.710	3 181 864.550
L65	34 509.350	3 181 833.570		R63	34 425.150	3 181 865.380
L66	34 438.440	3 181 837.970		R64	34 335.000	3 181 870.490
L67	34 345.720	3 181 845.110		R65	34 124.650	3 181 885.960
L68	34 335.310	3 181 845.900		R66	34 080.860	3 181 888.000
L69	34 246.990	3 181 852.710		R67	33 997.550	3 181 888.020
L70	34 214.160	3 181 854.300		R68	33 903.930	3 181 884.640
L71	34 156.880	3 181 852.700		R69	33 823.160	3 181 877.250
L72	34 072.740	3 181 858.980		R70	33 723.370	3 181 862.750
L73	33 967.690	3 181 856.490		R71	33 631.170	3 181 843.820
L74	33 876.720	3 181 851.180		R72	33 548.530	3 181 825.300
L75	33 786.000	3 181 840.500		R73	33 471.040	3 181 805.210
L76	33 695.320	3 181 827.230		R74	33 401.100	3 181 787.090
L77	33 549.870	3 181 792.270		R75	33 383.040	3 181 782.830
L78	33 429.330	3 181 763.440		R76	33 312.570	3 181 766.180
L79	33 346.600	3 181 742.330		R77	33 273.740	3 181 762.990
L80	33 309.450	3 181 735.240		R78	33 212.480	3 181 753.570
L81	33 273.730	3 181 730.330		R79	32 855.780	3 181 762.120
L82	33 219.120	3 181 728.820		R80	32 247.290	3 181 767.580
L83	32 778.870	3 181 731.780		R81	32 138.970	3 181 758.860
L84	32 253.000	3 181 736.190		R82	32 086.210	3 181 744.560
L85	32 180.380	3 181 732.030		R83	31 863.680	3 181 660.720
L86	32 145.340	3 181 726.300		R84	31 773.520	3 181 642.510
L87	32 092.240	3 181 713.640		R85	31 683.280	3 181 639.600
L88	32 030.320	3 181 691.350		R86	31 588.330	3 181 653.410
L89	31 946.050	3 181 655.550		R87	31 162.250	3 181 754.210
L90	31 859.610	3 181 626.660		R88	31 156.990	3 181 754.110
L91	31 769.580	3 181 610.600		R89	31 119.500	3 181 761.540
L92	31 678.450	3 181 608.910		R90	31 087.030	3 181 758.790
L93	31 588.200	3 181 621.590		R91	31 083.110	3 181 758.460
L94	31 582.330	3 181 622.750		R92	31 015.640	3 181 737.110

Vel	13	Van	18	P764/09
Sheet		of		

PADRESERWE KOÖRDINATE / ROAD RESERVE CO-ORDINATES									
LINKERKANT/LEFT HAND SIDE					REGTERKANT/RIGHT HAND SIDE				
	Y	X	WG 21°		Y	X			
L95	31 192.500	3 181 716.060		R93	30 957.610	3 181 692.870			
L96	31 140.910	3 181 726.460		R94	30 937.650	3 181 662.570			
L97	31 093.130	3 181 728.580		R95	30 918.220	3 181 633.520			
L98	31 091.190	3 181 728.660		R96	30 901.830	3 181 563.570			
L99	31 054.990	3 181 719.110		R97	30 910.030	3 181 492.210			
L100	31 006.410	3 181 694.550		R98	30 936.830	3 181 414.790			
L101	30 978.960	3 181 670.350		R99	31 083.510	3 181 021.900			
L102	30 958.610	3 181 643.080		R100	31 106.590	3 180 915.020			
L103	30 943.480	3 181 610.410		R101	31 104.160	3 180 823.490			
L104	30 934.940	3 181 575.090		R102	31 082.610	3 180 735.230			
L105	30 933.650	3 181 538.750		R103	31 042.100	3 180 653.790			
L106	30 940.000	3 181 500.580		R104	30 985.470	3 180 583.210			
L107	30 963.320	3 181 433.040		R105	30 820.150	3 180 413.880			
L108	31 116.300	3 181 023.250		R106	30 749.320	3 180 357.060			
L109	31 137.990	3 180 915.160		R107	30 669.530	3 180 312.620			
L110	31 135.960	3 180 823.990		R108	29 442.690	3 179 740.320			
L111	31 115.670	3 180 734.750		R109	29 357.460	3 179 708.240			
L112	31 078.270	3 180 652.620		R110	29 268.300	3 179 689.110			
L113	31 024.450	3 180 578.760		R111	29 177.460	3 179 683.300			
L114	30 874.680	3 180 423.170		R112	28 946.490	3 179 681.720			
L115	30 834.790	3 180 384.170		R113	28 841.520	3 179 659.290			
L116	30 762.910	3 180 328.340		R114	28 732.460	3 179 616.630			
L117	30 683.010	3 180 284.320		R115	28 636.960	3 179 576.920			
L118	30 635.140	3 180 261.840		R116	28 535.660	3 179 539.860			
L119	29 457.500	3 179 713.140		R117	28 464.330	3 179 534.040			
L120	29 373.130	3 179 680.000		R118	28 337.970	3 179 530.690			
L121	29 335.140	3 179 671.380		R119	28 247.580	3 179 537.210			
L122	29 283.650	3 179 659.620		R120	28 156.510	3 179 548.540			
L123	29 193.230	3 179 652.050		R121	28 066.420	3 179 564.820			
L124	29 010.790	3 179 650.760		R122	27 019.070	3 179 783.170			
L125	28 918.590	3 179 643.710		R123	26 912.780	3 179 808.750			
L126	28 798.540	3 179 610.420		R124	26 791.400	3 179 849.420			
L127	28 732.240	3 179 583.720		R125	26 674.140	3 179 898.940			
L128	28 539.240	3 179 503.880		R126	26 560.790	3 179 959.140			
L129	28 468.570	3 179 489.760		R127	26 054.550	3 180 238.130			
L130	28 122.800	3 179 520.930		R128	24 336.930	3 181 184.560			
L131	27 473.560	3 179 654.690		R129	24 351.010	3 181 227.380			
L132	26 848.600	3 179 786.500		R130	23 845.530	3 181 455.580			
L133	26 737.210	3 179 826.780		R131	23 800.000	3 181 479.920			
L134	26 072.130	3 180 192.730		R132	23 716.990	3 181 521.900			
L135	25 890.570	3 180 292.630		R133	23 637.340	3 181 558.950			
L136	24 715.190	3 180 939.810		R134	23 035.580	3 181 829.240			
L137	24 327.340	3 181 153.260		R135	22 927.110	3 181 875.030			
L138	23 746.200	3 181 474.130		R136	22 877.110	3 181 894.140			
L139	23 567.200	3 181 525.460		R137	22 822.040	3 181 914.290			
L140	23 473.980	3 181 563.620		R138	22 733.410	3 181 943.990			
L141	23 141.970	3 181 737.710		R139	22 671.210	3 181 963.300			
L142	23 029.500	3 181 797.420		R140	22 609.120	3 181 980.490			
L143	22 945.630	3 181 833.470		R141	21 732.550	3 182 223.940			
L144	22 859.530	3 181 867.120		R142	21 500.990	3 182 288.180			
L145	22 773.220	3 181 897.910		R143	21 438.270	3 182 301.170			

Vel	14	Van	18	P764/09
Sheet		of		

PADRESERWE KOÖRDINATE / ROAD RESERVE CO-ORDINATES						
LINKERKANT/LEFT HAND SIDE				REGTERKANT/RIGHT HAND SIDE		
	Y	X	WG 21°		Y	X
L146	22 753.020	3 181 904.350		R144	21 401.850	3 182 305.830
L147	22 686.140	3 181 925.670		R145	21 338.630	3 182 312.870
L148	22 598.640	3 181 950.830		R146	21 265.170	3 182 313.010
L149	21 749.020	3 182 186.520		R147	21 199.710	3 182 309.110
L150	21 531.470	3 182 246.870		R148	21 101.980	3 182 294.840
L151	21 461.000	3 182 264.180		R149	20 987.450	3 182 262.530
L152	21 446.450	3 182 267.000		R150	20 966.920	3 182 256.740
L153	21 407.510	3 182 273.330		R151	20 916.540	3 182 256.890
L154	21 353.660	3 182 279.260		R152	20 740.870	3 182 204.810
L155	21 263.000	3 182 281.120		R153	20 534.280	3 182 143.270
L156	21 107.740	3 182 263.380		R154	20 353.870	3 182 089.010
L157	21 003.020	3 182 233.700		R155	19 735.040	3 181 906.710
L158	20 370.210	3 182 053.820		R156	19 550.060	3 181 853.960
L159	19 749.120	3 181 877.190		R157	19 040.860	3 181 708.870
L160	19 569.920	3 181 826.350		R158	17 655.970	3 181 315.110
L161	19 533.080	3 181 815.910		R159	17 547.720	3 181 266.840
L162	19 055.220	3 181 679.980		R160	17 496.990	3 181 244.280
L163	17 669.110	3 181 285.940		R161	17 469.680	3 181 228.620
L164	17 599.420	3 181 257.660		R162	17 475.440	3 181 218.530
L165	17 559.940	3 181 231.840		R163	17 458.490	3 181 202.650
L166	17 528.110	3 181 214.260		R164	17 406.940	3 181 161.470
L167	17 491.560	3 181 190.290		R164X	17 362.350	3 181 120.670
L168	17 486.880	3 181 187.220		R165	17 329.580	3 181 087.350
L169	17 420.070	3 181 131.310		R166	17 255.050	3 181 002.340
L170	17 364.690	3 181 078.780		R167	17 184.250	3 180 919.970
L171	17 358.800	3 181 072.550		R168	17 069.310	3 180 787.110
L172	17 297.850	3 181 003.030		R169	16 859.170	3 180 536.270
L173	17 205.290	3 180 896.260		R170	16 846.760	3 180 520.170
L174	17 092.970	3 180 766.710		R171	16 705.290	3 180 315.120
L175	16 905.100	3 180 549.590		R172	16 330.120	3 179 771.300
L176	16 764.400	3 180 344.770		R173	16 261.260	3 179 686.060
L177	16 375.990	3 179 779.330		R174	16 173.760	3 179 596.790
L178	16 353.740	3 179 749.670		R175	16 138.440	3 179 565.020
L179	16 331.120	3 179 719.920		R176	16 100.610	3 179 536.250
L180	16 307.580	3 179 691.020		R177	16 042.270	3 179 491.880
L181	16 260.930	3 179 635.440		R178	16 024.540	3 179 480.070
L182	16 192.160	3 179 569.420		R179	15 837.830	3 179 355.580
L183	16 163.840	3 179 542.510		R180	15 800.870	3 179 330.940
L184	16 118.830	3 179 509.160		R181	15 693.840	3 179 260.860
L185	16 064.900	3 179 469.200		R182	15 646.630	3 179 229.740
L186	16 042.050	3 179 454.030		R183	15 545.770	3 179 163.270
L187	15 869.080	3 179 339.250		R184	15 440.760	3 179 094.060
L188	15 853.230	3 179 318.580		R185	15 066.580	3 178 847.450
L189	15 853.920	3 179 313.520		R186	14 651.190	3 178 573.680
L190	15 662.440	3 179 187.140		R187	14 533.290	3 178 495.980
L191	15 656.390	3 179 183.140		R188	14 223.910	3 178 293.130
L192	15 650.840	3 179 196.620		R189	14 142.420	3 178 247.640
L193	15 556.930	3 179 133.490		R189X	14 127.310	3 178 239.200
L194	15 504.770	3 179 098.430		R190	14 072.480	3 178 212.480
L195	15 452.450	3 179 063.210		R191	14 027.030	3 178 190.330
L196	15 456.840	3 179 051.650		R192	13 945.200	3 178 157.890

Vel	15	Van	18	P764/09
Sheet		of		

PADRESERWE KOÖRDINATE / ROAD RESERVE CO-ORDINATES						
LINKERKANT/LEFT HAND SIDE				REGTERKANT/RIGHT HAND SIDE		
	Y	X	WG 21°		X	
L197	15 271.670	3 178 929.640		R193	13 910.590	3 178 144.180
L198	15 264.750	3 178 940.790		R194	13 737.410	3 178 084.960
L199	15 091.720	3 178 826.760		R195	13 636.850	3 178 050.570
L200	14 670.920	3 178 549.460		R196	13 516.000	3 178 009.240
L201	14 395.730	3 178 368.120		R197	13 397.910	3 177 968.580
L202	14 241.140	3 178 267.480		R198	13 294.780	3 177 932.940
L203	14 139.630	3 178 210.200		R199	13 042.990	3 177 845.080
L204	14 035.340	3 178 160.220		R200	12 995.010	3 177 822.850
L205	13 955.930	3 178 128.460		R201	12 942.940	3 177 792.680
L206	13 922.910	3 178 115.260		R202	12 896.630	3 177 758.780
L207	13 741.650	3 178 053.240		R203	12 851.080	3 177 720.760
L208	13 644.510	3 178 020.000		R204	12 761.980	3 177 640.140
L209	13 529.060	3 177 980.510		R205	12 696.040	3 177 580.840
L210	13 411.710	3 177 940.380		R206	12 603.550	3 177 497.870
L211	13 307.950	3 177 904.890		R206X	12 598.310	3 177 493.170
L212	13 215.600	3 177 873.310		R207	12 503.390	3 177 420.720
L213	13 055.140	3 177 816.990		R208	12 410.090	3 177 358.240
L214	12 988.030	3 177 783.520		R209	12 311.770	3 177 300.800
L215	12 959.910	3 177 766.150		R210	12 208.580	3 177 249.710
L216	12 887.230	3 177 710.580		R211	12 045.020	3 177 176.150
L217	12 710.580	3 177 551.830		R212	11 889.750	3 177 106.390
L218	12 681.610	3 177 525.800		R213	11 746.760	3 177 042.150
L219	12 614.330	3 177 467.670		R214	11 629.180	3 176 988.980
L220	12 589.870	3 177 447.580		R215	11 524.900	3 176 944.270
L221	12 523.230	3 177 396.540		R216	11 471.240	3 176 923.800
L222	12 434.350	3 177 336.460		R217	11 361.880	3 176 888.600
L223	12 354.440	3 177 288.800		R218	11 306.670	3 176 873.950
L224	12 257.080	3 177 238.320		R219	10 912.120	3 176 769.270
L225	12 231.800	3 177 226.740		R220	10 692.520	3 176 707.470
L226	12 167.330	3 177 196.870		R221	10 626.870	3 176 689.720
L227	11 991.830	3 177 111.630		R222	10 509.390	3 176 658.360
L228	11 905.570	3 177 074.790		R223	10 351.140	3 176 621.740
L229	11 714.250	3 176 993.100		R224	10 196.700	3 176 604.790
L230	11 549.810	3 176 920.530		R225	10 076.750	3 176 591.080
L231	11 471.510	3 176 890.950		R226	10 050.440	3 176 588.310
L232	11 387.980	3 176 863.810		R227	9 781.960	3 176 560.040
L233	11 320.840	3 176 845.480		R228	9 649.450	3 176 545.150
L234	11 273.320	3 176 832.500		R229	9 644.640	3 176 545.650
L235	11 075.640	3 176 780.310		R230	9 592.600	3 176 538.710
L236	10 703.550	3 176 681.430		R231	9 580.870	3 176 536.600
L237	10 558.770	3 176 642.950		R232	9 564.300	3 176 533.020
L238	10 451.820	3 176 615.830		R233	9 474.530	3 176 533.690
L239	10 328.920	3 176 587.220		R234	9 245.040	3 176 537.720
L240	10 200.260	3 176 573.830		R235	8 831.730	3 176 545.830
L241	10 066.130	3 176 557.040		R236	8 773.550	3 176 543.950
L242	9 646.630	3 176 515.920		R237	8 716.390	3 176 537.270
L243	9 552.150	3 176 506.190		R238	8 663.150	3 176 525.960
L244	9 345.920	3 176 505.080		R239	8 639.790	3 176 519.370
L245	8 838.330	3 176 514.450		R240	8 573.970	3 176 496.390
L246	8 748.130	3 176 510.200		R241	8 538.770	3 176 479.790
L247	8 656.440	3 176 491.730		R242	8 200.400	3 176 312.860

Vel	16	Van	18	P764/09
Sheet		of		

PADRESERWE KOÖRDINATE / ROAD RESERVE CO-ORDINATES						
LINKERKANT/LEFT HAND SIDE				REGTERKANT/RIGHT HAND SIDE		
	Y	X	WG 21°		X	
L248	8 604.090	3 176 474.370	R243	8 015.370	3 176 221.570	
L249	8 589.970	3 176 467.980	R244	7 957.440	3 176 200.470	
L250	8 538.640	3 176 444.630	R245	7 911.110	3 176 186.450	
L251	8 212.990	3 176 284.460	R246	7 851.430	3 176 173.750	
L252	8 085.400	3 176 221.700	R247	7 811.710	3 176 168.190	
L253	7 974.980	3 176 174.500	R248	7 769.510	3 176 165.450	
L254	7 878.590	3 176 148.040	R249	7 658.990	3 176 167.800	
L255	7 783.910	3 176 135.030	R250	7 572.640	3 176 181.870	
L256	7 772.170	3 176 133.730	R251	7 197.690	3 176 267.610	
L257	7 663.210	3 176 136.020	R252	7 146.740	3 176 279.260	
L258	7 573.720	3 176 149.850	R253	5 968.320	3 176 547.850	
L259	7 163.830	3 176 243.310	R254	4 783.040	3 176 802.490	
L260	6 302.580	3 176 439.500	R255	4 688.540	3 176 822.790	
L261	5 882.640	3 176 533.980	R256	4 539.430	3 176 854.790	
L262	4 845.900	3 176 756.850	R257	4 434.650	3 176 867.950	
L263	4 763.640	3 176 773.080	R258	4 352.690	3 176 867.440	
L264	4 540.550	3 176 822.480	R259	4 316.690	3 176 863.530	
L265	4 432.780	3 176 836.440	R260	4 234.020	3 176 848.800	
L266	4 354.490	3 176 835.950	R261	4 227.140	3 176 840.783	
L267	4 321.160	3 176 832.330	R262	4 108.450	3 176 814.770	
L268	4 234.310	3 176 816.850	R263	4 011.010	3 176 793.470	
L269	4 229.110	3 176 829.990	R264	3 916.720	3 176 772.850	
L270	4 205.890	3 176 824.870	R265	3 887.380	3 176 766.430	
L271	4 174.460	3 176 817.930	R266	3 865.880	3 176 762.390	
L272	4 127.630	3 176 807.590	R267	3 844.660	3 176 759.580	
L273	4 108.550	3 176 803.380	R268	3 821.610	3 176 758.280	
L274	4 085.760	3 176 798.340	R269	3 797.640	3 176 757.320	
L275	4 017.400	3 176 783.250	R270	3 760.160	3 176 759.110	
L276	4 011.110	3 176 781.860	R271	3 649.810	3 176 772.970	
L277	3 976.170	3 176 774.150	R272	3 631.850	3 176 776.100	
L278	3 916.820	3 176 761.420	R273	3 623.550	3 176 777.540	
L279	3 888.530	3 176 755.360	R274	3 616.800	3 176 778.380	
L280	3 867.940	3 176 751.260	R275	3 595.000	3 176 781.110	
L281	3 860.230	3 176 750.350	R276	3 404.380	3 176 786.700	
L282	3 845.220	3 176 748.580	R277	3 402.140	3 176 786.760	
L283	3 831.910	3 176 747.550	R278	3 375.260	3 176 784.630	
L284	3 821.930	3 176 746.780	R279	3 320.370	3 176 777.530	
L285	3 813.030	3 176 746.660	R280	3 299.060	3 176 775.680	
L286	3 797.540	3 176 746.450	R281	3 279.670	3 176 775.580	
L287	3 784.680	3 176 746.760	R282	3 271.280	3 176 776.690	
L288	3 771.230	3 176 747.080	R283	3 258.800	3 176 778.340	
L289	3 756.320	3 176 748.880	R284	3 238.060	3 176 782.560	
L290	3 727.950	3 176 752.300	R285	3 211.870	3 176 791.120	
L291	3 699.580	3 176 755.720	R286	3 043.030	3 176 870.150	
L292	3 649.170	3 176 761.800	R287	2 899.050	3 176 938.480	
L293	3 638.240	3 176 763.030	R288	2 735.260	3 177 015.790	
L294	3 623.490	3 176 764.680	R289	2 719.200	3 177 022.950	
L295	3 598.380	3 176 766.870	R290	2 703.930	3 177 028.020	
L296	3 579.940	3 176 767.710	R291	2 687.120	3 177 031.620	
L297	3 429.970	3 176 772.330	R292	2 613.210	3 177 039.600	
L298	3 409.630	3 176 772.470	R293	2 595.020	3 177 045.270	

Vel	17	Van	18	P764/09
Sheet		of		

PADRESERWE KOÖRDINATE / ROAD RESERVE CO-ORDINATES						
LINKERKANT/LEFT HAND SIDE				REGTERKANT/RIGHT HAND SIDE		
	Y	X	WG 21°		X	
L299	3 404.070	3 176 772.070	R294	2 576.030	3 177 053.370	
L300	3 384.750	3 176 770.700	R295	2 560.620	3 177 062.390	
L301	3 310.750	3 176 761.290	R296	2 555.420	3 177 065.430	
L302	3 291.010	3 176 759.950	R297	2 530.040	3 177 087.730	
L303	3 272.340	3 176 760.650	R298	2 510.670	3 177 104.750	
L304	3 263.960	3 176 761.480	R299	2 497.230	3 177 115.600	
L305	3 252.370	3 176 762.630	R300	2 476.660	3 177 128.640	
L306	3 235.220	3 176 766.750	R301	2 401.890	3 177 162.460	
L307	3 222.510	3 176 770.200	R302	2 378.970	3 177 172.320	
L308	3 207.810	3 176 775.210	R303	2 362.860	3 177 178.650	
L309	2 731.630	3 177 000.600	R304	2 310.400	3 177 196.320	
L310	2 713.400	3 177 008.530	R305	2 003.330	3 177 296.570	
L311	2 693.840	3 177 014.620	R306	1 909.360	3 177 315.770	
L312	2 672.220	3 177 018.590	R307	1 877.870	3 177 321.210	
L313	2 625.090	3 177 024.010				
L314	2 603.960	3 177 028.720				
L315	2 582.910	3 177 036.090				
L316	2 563.360	3 177 045.760				
L317	2 550.490	3 177 053.820				
L318	2 538.120	3 177 062.730				
L319	2 497.650	3 177 097.210				
L320	2 479.770	3 177 110.180				
L321	2 463.500	3 177 118.850				
L322	2 395.210	3 177 149.410				
L323	2 374.800	3 177 158.180				
L324	2 343.730	3 177 169.830				
L325	2 034.030	3 177 272.220				
L326	2 016.310	3 177 277.400				
L327	1 996.400	3 177 281.780				
L328	1 877.190	3 177 301.900				

Vel	18	Van	18
Sheet		of	

P764/09

Printed by and obtainable from the Government Printer, Bosman Street, Private Bag X85, Pretoria, 0001
Publications: Tel: (012) 334-4508, 334-4509, 334-4510
Advertisements: Tel: (012) 334-4673, 334-4674, 334-4504
Subscriptions: Tel: (012) 334-4735, 334-4736, 334-4737
Cape Town Branch: Tel: (021) 465-7531

Gedruk deur en verkrygbaar by die Staatsdrukker, Bosmanstraat, Privaatsak X85, Pretoria, 0001
Publikasies: Tel: (012) 334-4508, 334-4509, 334-4510
Advertensies: Tel: (012) 334-4673, 334-4674, 334-4504
Subskripsies: Tel: (012) 334-4735, 334-4736, 334-4737
Kaapstad-tak: Tel: (021) 465-7531