

IMPORTANT NOTICE

The Government Printing Works will not be held responsible for faxed documents not received due to errors on the fax machine or faxes received which are unclear or incomplete. Please be advised that an "OK" slip, received from a fax machine, will not be accepted as proof that documents were received by the GPW for printing. If documents are faxed to the GPW it will be the sender's responsibility to phone and confirm that the documents were received in good order.

Furthermore the Government Printing Works will also not be held responsible for cancellations and amendments which have not been done on original documents received from clients.

CONTENTS**INHOUD**

<i>No.</i>	<i>Page No.</i>	<i>Gazette No.</i>	<i>No.</i>	<i>Bladsy No.</i>	<i>Koerant No.</i>
GOVERNMENT NOTICE			GOEWERMENSKENNISGEWING		
Transport, Department of			Vervoer, Departement van		
<i>Government Notice</i>			<i>Goewermentskennisgewing</i>		
906			906		
South African National Roads Agency Limited and the National Roads Act (7/1998): The South African National Roads Agency Limited: Declaration amendment of National Road N14 Section 4: Amendment of Declaration No. 629 of 2005	3	33632	Suid-Afrikaanse Nasionale Padagentskap Beperk en die Nasionale Paaie Wet (7/1998): Die Suid-Afrikaanse Nasionale Padagentskap Beperk: Verklaring wysiging van Nasionale Pad N14 Seksie 4: Wysiging van Verklaring No. 629 van 2005	4	33632

GOVERNMENT NOTICE

DEPARTMENT OF TRANSPORT

No. 906

15 October 2010

THE SOUTH AFRICAN NATIONAL ROADS AGENCY LIMITED

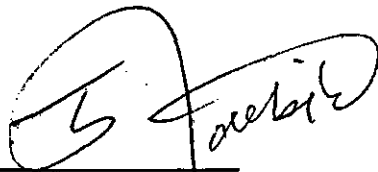
Registration No: 98/09584/06

DECLARATION AMENDMENT OF NATIONAL ROAD N14 SECTION 4

AMENDMENT OF DECLARATION NO. 629 OF 2005

By virtue of section 40(1)(b) of the South African National Roads Agency Limited and the National Roads Act, 1998 (Act No. 7 of 1998), I hereby amend Declaration No. 629 of 2005, by substituting the descriptive section of the route from Keimoes up to Upington, with the subjoined sheets 1 to 10 of Plan No. P765/09.

(National Road N14 Section 4: Keimoes – Upington)



MINISTER OF TRANSPORT

GOEWERMENTSKENNISGEWING

DEPARTEMENT VAN VERVOER

No. 906

15 Oktober 2010

DIE SUID-AFRIKAANSE NASIONALE PADAGENTSKAP BEPERK

Registrasie No: 98/09584/06

VERKLARING WYSIGING VAN NASIONALE PAD N14 SEKSIE 4

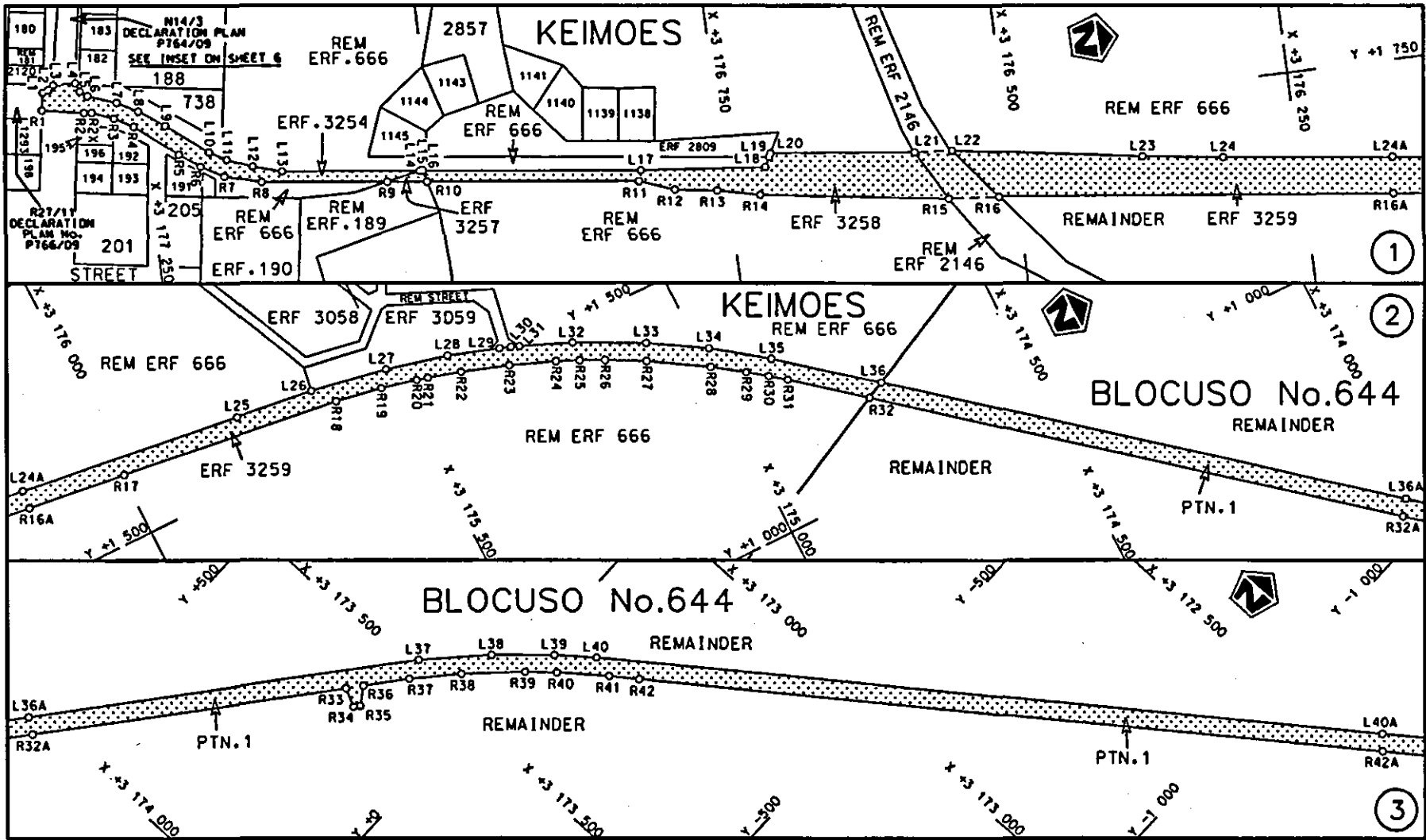
WYSIGING VAN VERKLARING NO. 629 VAN 2005

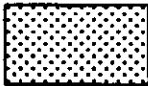
Kragtens Artikel 40(1)(b) van die Suid Afrikaanse Nasionale Padagentskap Beperk en die Nasionale Paaie Wet, 1998 (Wet no. 7 van 1998), wysig ek hiermee Verklaring no. 629 van 2005, deur die beskrywende gedeelte van die roete vanaf Keimoes tot by Upington, te vervang met meegaande velle 1 tot 10 van Plan no. P765/09

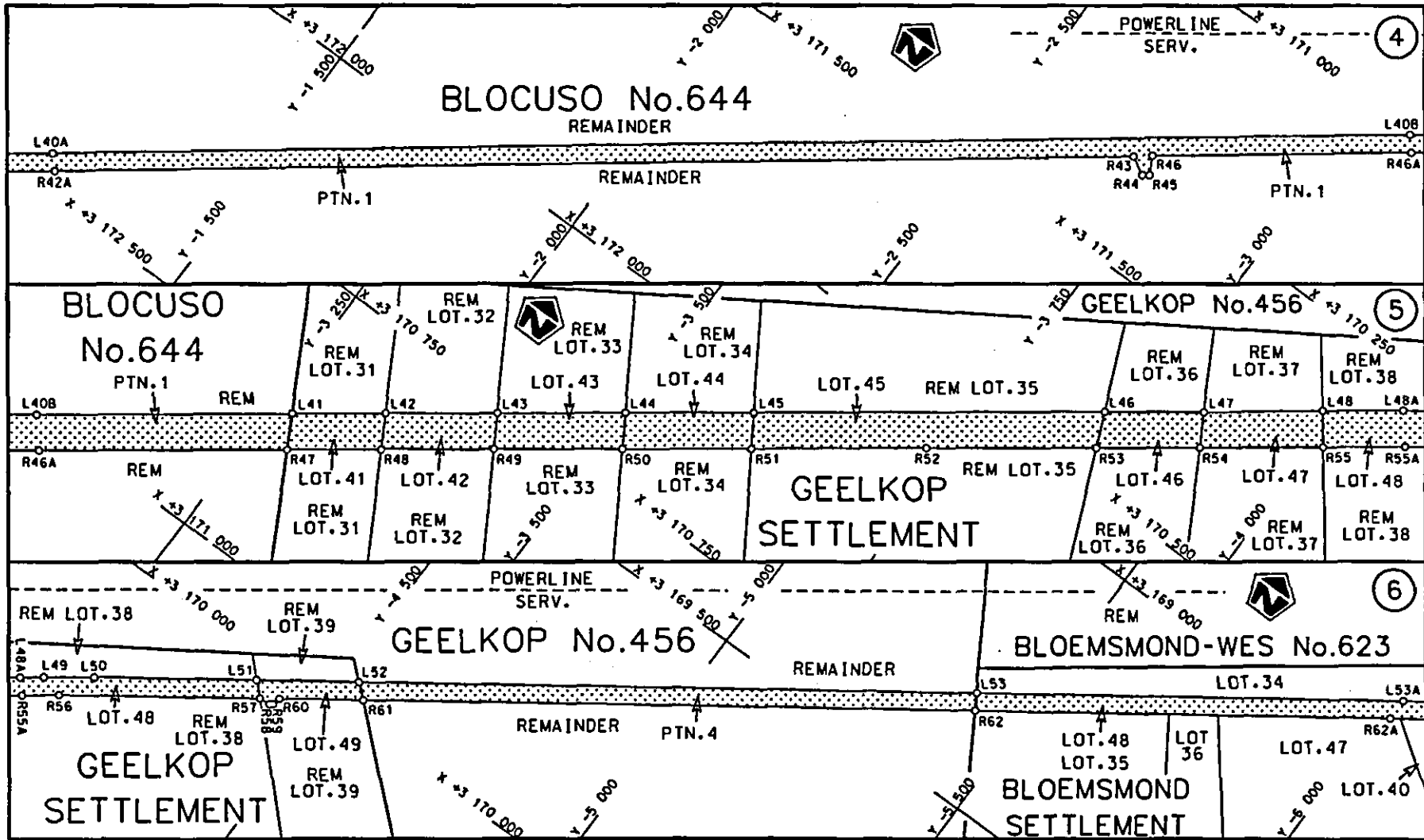
(Nasionale Pad N14 Seksie 4: Keimoes – Upington)

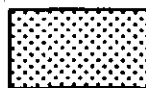


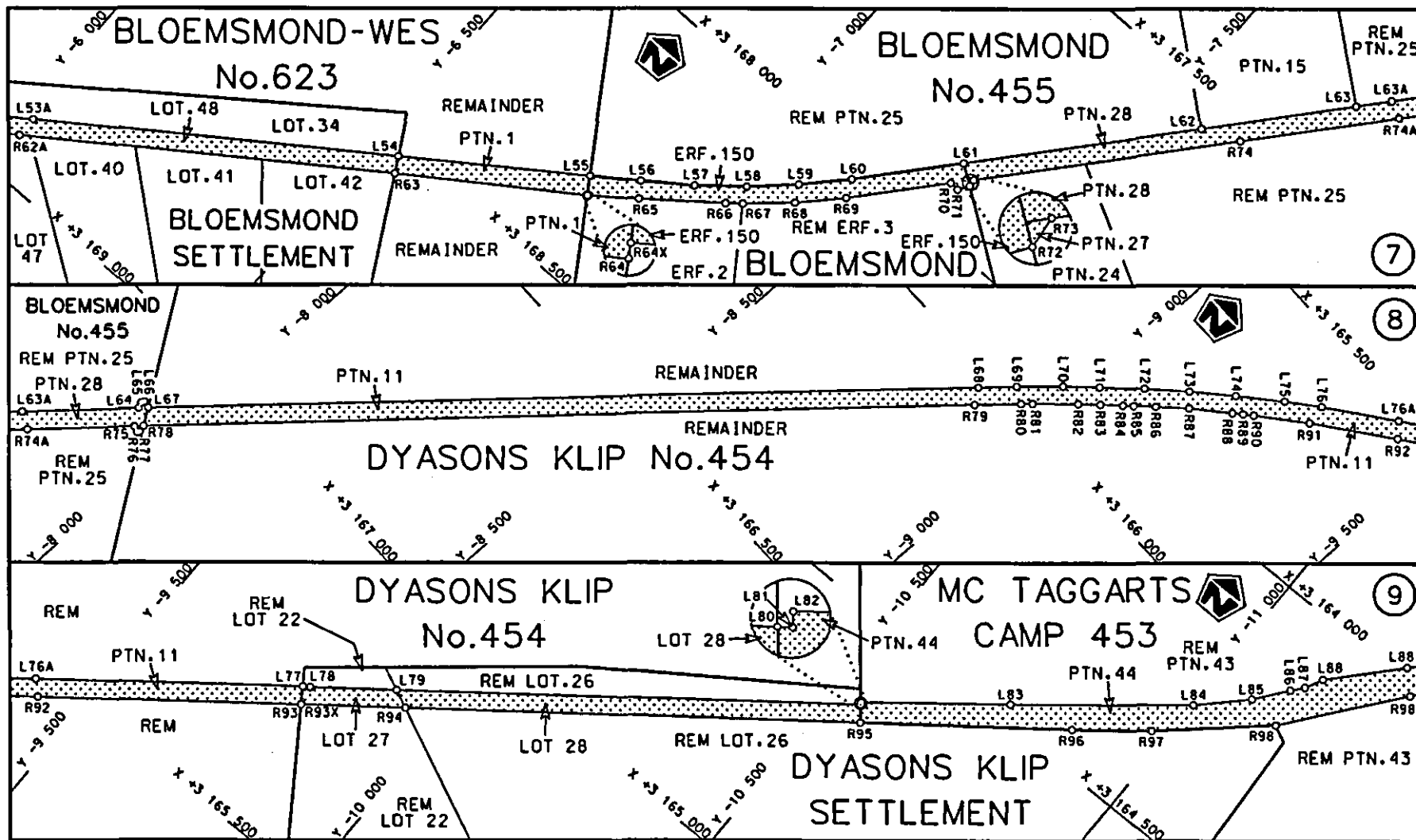
MINISTER VAN VERVOER




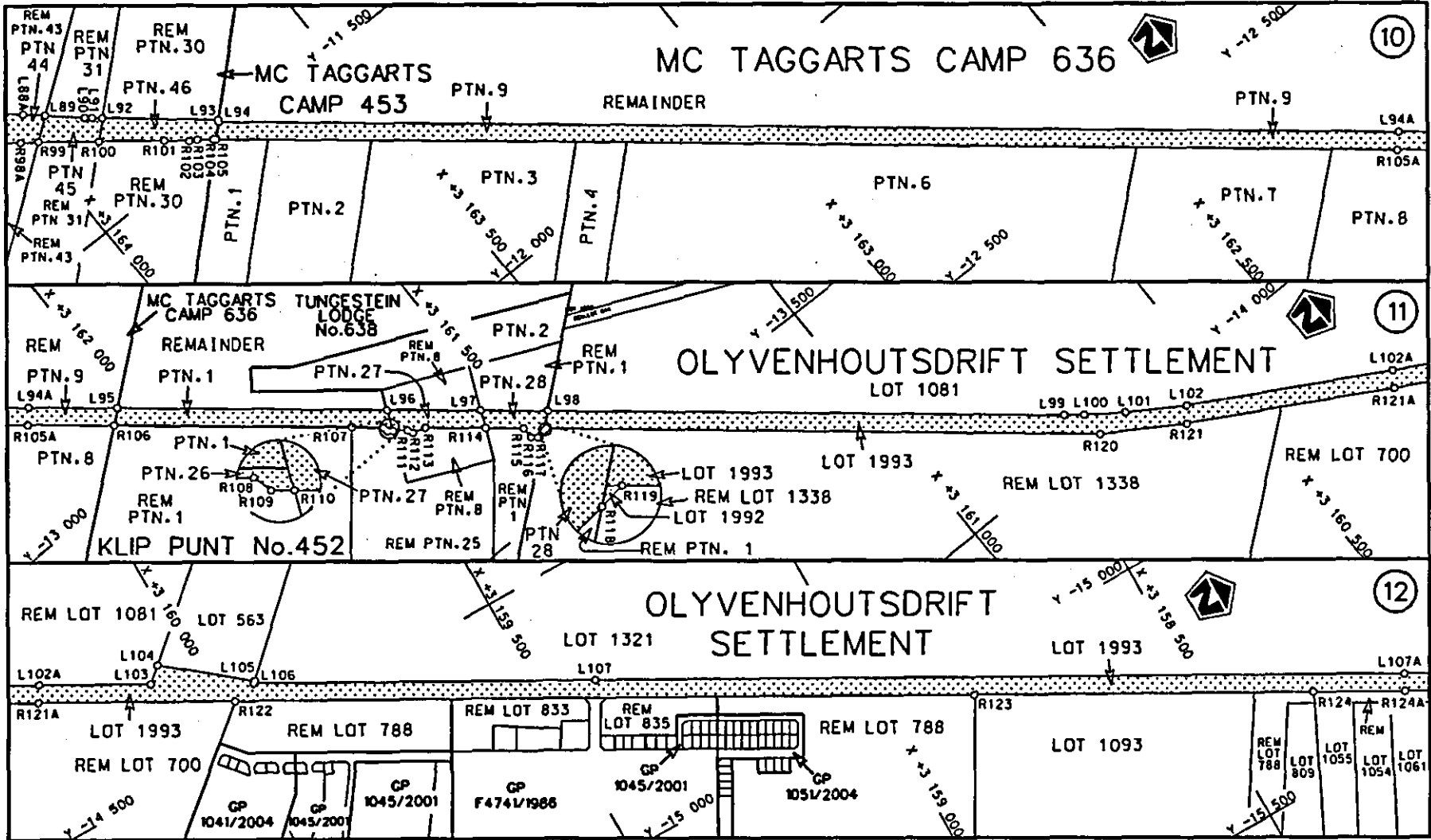
<p>Die Suid Afrikaanse Nasionale Padagentskap Beperk The South African National Roads Agency Limited</p>	<p>Die figuur getoon The figure shown</p> 	<p>stel die podreserwe voor van 'n gedeelte represents the road reserve of a portion van Nasionale Roete N14 Seksie 4 of National Route N14 Section 4</p>	<p>Vel 1 van 10 Sheet 1 of 10 Plan P765/09</p>
--	--	---	--

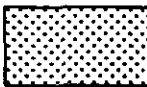


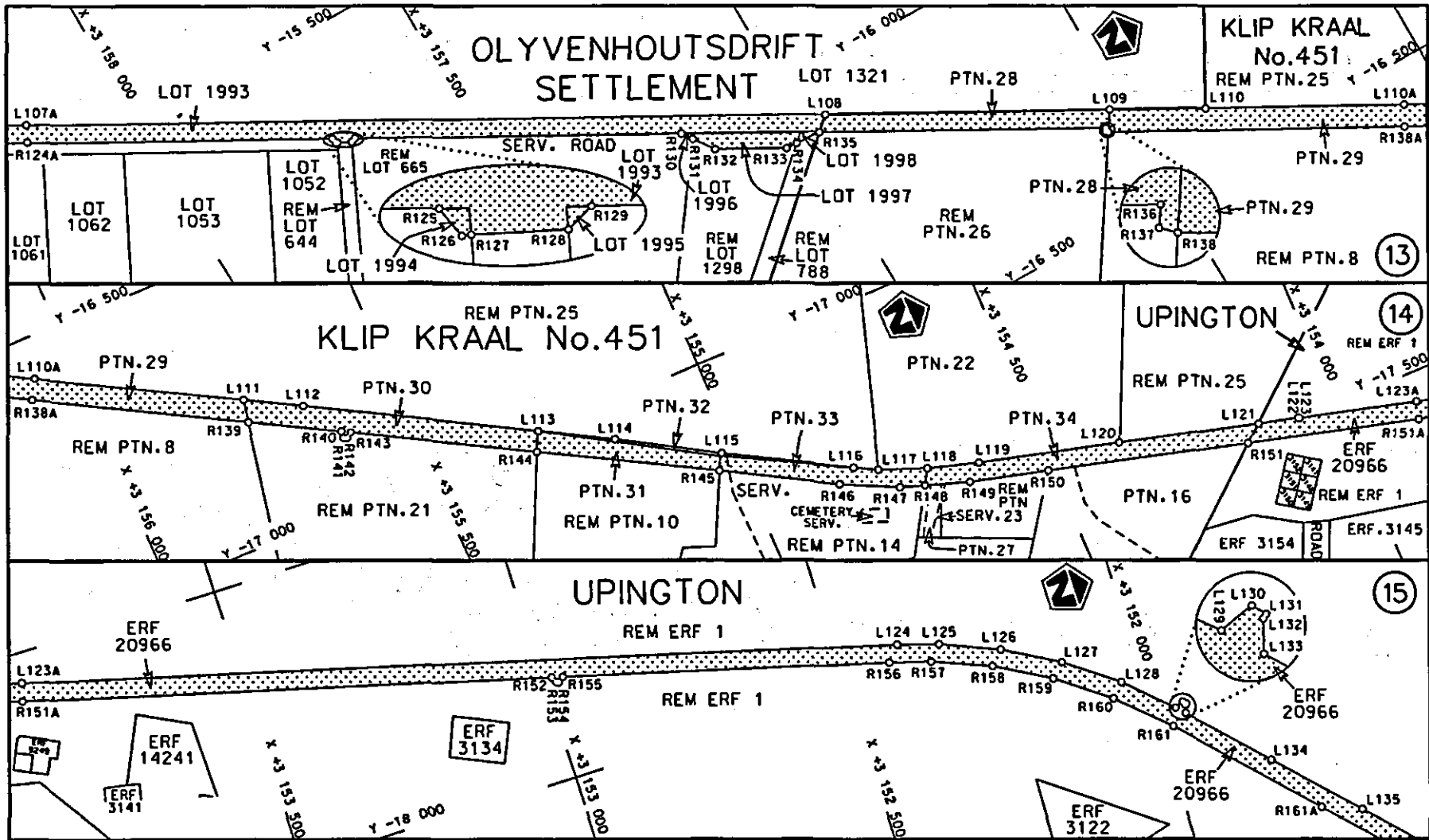
<p>Die Suid Afrikaanse Nasionale Padagentskap Beperk The South African National Roads Agency Limited</p>	<p>Die figuur getoon The figure shown</p> 	<p>steldie padreserwe voor van 'n gedeelte represents the road reserve of a portion van Nasionale Roete N14 Seksie 4 of National Route</p>	<p>Vel Sheet 2 van 10 of 10 Plan P765/09</p>
--	--	--	--

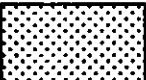


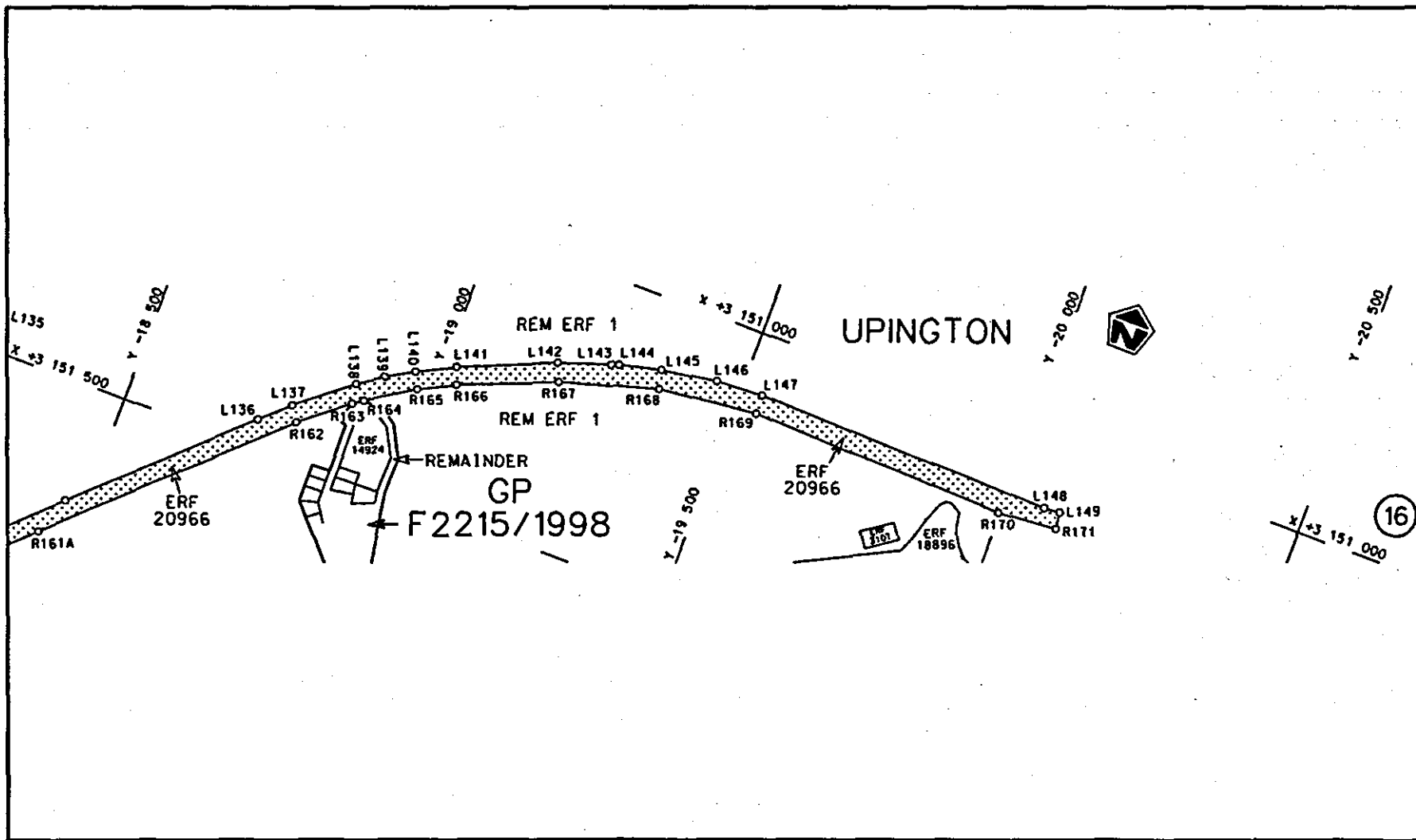
<p>Die Suid Afrikaanse Nasionale Padagentskap Beperk The South African National Roads Agency Limited</p>	<p>Die figuur getoon The figure shown</p> 	<p>steldie padreserwe voor van 'n gedeelte represents the road reserve of a portion van Nasionale Roete N14 Sektie 4 of National Route Section 4</p>	<p>Vel Sheet 3 van 10 Plan P765/09</p>
--	--	--	--

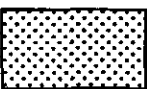


<p>Die Suid Afrikaanse Nasionale Padogentskap Beperk The South African National Roads Agency Limited</p>	<p>Die figuur getoon The figure shown</p> 	<p>steldie padreserwe voor van 'n gedeelte represents the road reserve of a portion van Nasionale Roete N14 Sektie 4 of National Route Section 4</p>	<p>Vel Sheet 4 van 10 of Plan P765/09</p>
--	--	--	---



<p>Die Suid Afrikaanse Nasionale Padagentskap Beperk The South African National Roads Agency Limited</p>	<p>Die figuur getoon The figure shown</p> 	<p>steldie padreserwe voor van 'n gedeelte represents the road reserve of a portion van Nasionale Roete N14 Sektie 4 of Notional Route Section</p>	<p>Vel Sheet 5 van 10 Plan P765/09</p>
--	--	--	--



<p>Die Suid Afrikaanse Nasionale Padagentskap Beperk The South African National Roads Agency Limited</p>	<p>Die figuur getoon The figure shown</p> 	<p>steldie padreserwe voor van 'n gedeelte represents the road reserve of a portion van Nasionale Roete of National Route N14 Seksie Section 4</p>	<p>Vel Sheet 6 van of 10 Plan P765/09</p>
--	--	--	---

PADRESERWE KOÖRDINATE / ROAD RESERVE CO-ORDINATES						
LINKERKANT/LEFT HAND SIDE				REGTERKANT/RIGHT HAND SIDE		
	Y	X	WG 21°		Y	X
L1	1 872.590	3 177 331.120		R1	1 857.280	3 177 333.740
L2	1 874.270	3 177 325.870		R2	1 850.410	3 177 297.560
L3	1 877.870	3 177 321.210		R2X	1 849.670	3 177 291.090
L4	1 877.190	3 177 301.900		R3	1 842.030	3 177 272.590
L5	1 869.550	3 177 298.840		R4	1 832.530	3 177 256.400
L6	1 864.730	3 177 292.840		R5	1 803.290	3 177 220.510
L7	1 855.710	3 177 268.380		R6	1 790.080	3 177 203.060
L8	1 845.690	3 177 250.580		R7	1 778.590	3 177 183.720
L9	1 829.820	3 177 228.940		R8	1 769.050	3 177 152.190
L10	1 801.810	3 177 194.080		R9	1 755.290	3 177 043.660
L11	1 793.300	3 177 179.790		R10	1 750.940	3 177 009.410
L12	1 783.880	3 177 158.150		R11	1 727.640	3 176 825.720
L13	1 776.300	3 177 133.480		R12	1 716.430	3 176 795.640
L14	1 761.260	3 177 014.690		R13	1 710.940	3 176 758.970
L15	1 761.800	3 177 012.090		R14	1 702.440	3 176 722.180
L16	1 760.910	3 177 011.870		R15	1 678.050	3 176 558.640
L17	1 736.980	3 176 822.840		R16	1 674.030	3 176 514.670
L18	1 726.060	3 176 714.720		R17	1 611.390	3 175 996.880
L19	1 734.490	3 176 710.240		R18	1 560.840	3 175 609.200
L20	1 737.850	3 176 708.460		R19	1 546.330	3 175 528.480
L21	1 722.520	3 176 583.080		R20	1 532.410	3 175 466.630
L22	1 719.770	3 176 550.200		R21	1 527.570	3 175 447.490
L23	1 693.000	3 176 385.470		R22	1 511.380	3 175 390.710
L24	1 683.150	3 176 315.670		R23	1 483.930	3 175 309.650
L25	1 614.010	3 175 775.580		R24	1 453.600	3 175 233.610
L26	1 596.730	3 175 639.830		R25	1 436.620	3 175 196.210
L27	1 573.820	3 175 505.740		R26	1 417.070	3 175 156.140
L28	1 546.650	3 175 399.590		R27	1 383.040	3 175 091.700
L29	1 517.730	3 175 311.960		R28	1 324.020	3 174 995.890
L30	1 511.070	3 175 292.820		R29	1 288.170	3 174 944.730
L31	1 505.330	3 175 278.960		R30	1 264.160	3 174 912.590
L32	1 469.880	3 175 193.490		R31	1 243.120	3 174 885.660
L33	1 411.610	3 175 078.460		R32	1 150.190	3 174 771.820
L34	1 354.260	3 174 984.450		R33	197.220	3 173 600.000
L35	1 289.390	3 174 894.890		R34	165.830	3 173 614.660
L36	1 165.500	3 174 741.120		R35	158.220	3 173 605.680
L37	137.860	3 173 477.250		R36	177.730	3 173 576.080
L38	49.990	3 173 384.290		R37	126.770	3 173 513.310
L39	-31.270	3 173 310.170		R38	65.990	3 173 445.670
L40	-87.920	3 173 264.300		R39	-13.990	3 173 366.830
L41	-3 267.270	3 170 866.340		R40	-55.570	3 173 330.490
L42	-3 332.190	3 170 817.170		R41	- 126.920	3 173 273.630
L43	-3 410.310	3 170 758.540		R42	- 169.190	3 173 242.030
L44	-3 499.710	3 170 691.090		R43	-2 720.530	3 171 318.130
L45	-3 589.310	3 170 623.660		R44	-2 752.110	3 171 334.960
L46	-3 834.620	3 170 438.430		R45	-2 763.080	3 171 328.200
L47	-3 904.590	3 170 386.610		R46	-2 746.990	3 171 298.040
L48	-3 987.400	3 170 322.650		R47	-3 282.570	3 170 893.920
L49	-4 076.670	3 170 255.280		R48	-3 348.070	3 170 844.630
L50	-4 147.540	3 170 203.030		R49	-3 426.800	3 170 785.550
L51	-4 378.670	3 170 040.120		R50	-3 516.660	3 170 718.060

Vel	7	Van	10	P765/09
Sheet		of		

PADRESERWE KOÖRDINATE / ROAD RESERVE CO-ORDINATES									
LINKERKANT/LEFT HAND SIDE					REGTERKANT/RIGHT HAND SIDE				
	Y	X	WG 21°		Y	X			
L52	-4 524.220	3 169 937.960		R51	-3 606.620	3 170 650.270			
L53	-5 407.770	3 169 315.340		R52	-3 728.650	3 170 557.500			
L54	-6 541.340	3 168 516.740		R53	-3 847.830	3 170 468.230			
L55	-6 815.680	3 168 322.770		R54	-3 920.600	3 170 413.370			
L56	-6 889.040	3 168 271.430		R55	-4 006.930	3 170 347.930			
L57	-6 964.860	3 168 216.020		R56	-4 115.460	3 170 265.620			
L58	-7 034.670	3 168 157.160		R57	-4 401.840	3 170 063.440			
L59	-7 101.010	3 168 093.900		R58	-4 421.270	3 170 061.980			
L60	-7 164.860	3 168 025.470		R59	-4 425.950	3 170 058.080			
L61	-7 293.280	3 167 875.070		R60	-4 429.560	3 170 043.970			
L62	-7 566.990	3 167 554.470		R61	-4 548.720	3 169 959.840			
L63	-7 745.640	3 167 344.730		R62	-5 424.010	3 169 342.150			
L64	-7 918.490	3 167 141.750		R63	-6 556.660	3 168 544.060			
L65	-7 914.150	3 167 131.590		R64	-6 834.830	3 168 351.990			
L66	-7 917.070	3 167 128.230		R64X	-6 834.520	3 168 351.520			
L67	-7 929.140	3 167 129.170		R65	-6 906.990	3 168 297.630			
L68	-8 870.740	3 166 025.540		R66	-7 026.240	3 168 203.450			
L69	-8 914.460	3 165 974.390		R67	-7 049.270	3 168 184.310			
L70	-8 968.250	3 165 913.840		R68	-7 116.810	3 168 122.810			
L71	-9 012.040	3 165 867.140		R69	-7 178.900	3 168 057.050			
L72	-9 067.260	3 165 810.610		R70	-7 299.040	3 167 916.600			
L73	-9 123.970	3 165 755.510		R71	-7 315.580	3 167 917.600			
L74	-9 183.900	3 165 700.490		R72	-7 327.860	3 167 898.870			
L75	-9 249.020	3 165 643.420		R73	-7 326.100	3 167 885.660			
L76	-9 299.980	3 165 600.890		R74	-7 632.150	3 167 526.790			
L77	-9 776.140	3 165 232.620		R75	-7 937.170	3 167 169.010			
L78	-9 782.820	3 165 228.740		R76	-7 948.020	3 167 172.010			
L79	-9 906.250	3 165 134.220		R77	-7 950.670	3 167 168.430			
L80	-10 549.420	3 164 639.670		R78	-7 947.850	3 167 156.470			
L81	-10 550.280	3 164 639.070		R79	-8 889.580	3 166 051.590			
L82	-10 547.760	3 164 635.720		R80	-8 942.620	3 165 989.860			
L83	-10 752.240	3 164 472.570		R81	-8 956.080	3 165 974.620			
L84	-11 001.110	3 164 270.210		R82	-9 009.730	3 165 915.540			
L85	-11 074.010	3 164 197.050		R83	-9 036.240	3 165 887.360			
L86	-11 116.100	3 164 141.730		R84	-9 063.710	3 165 859.000			
L87	-11 132.800	3 164 121.480		R85	-9 077.260	3 165 845.280			
L88	-11 148.520	3 164 090.840		R86	-9 104.630	3 165 818.270			
L89	-11 275.250	3 163 952.590		R87	-9 145.980	3 165 778.330			
L90	-11 326.160	3 163 895.970		R88	-9 202.920	3 165 725.830			
L91	-11 328.570	3 163 892.590		R89	-9 217.060	3 165 713.140			
L92	-11 340.670	3 163 878.050		R90	-9 231.180	3 165 700.670			
L93	-11 470.850	3 163 723.030		R91	-9 306.680	3 165 636.150			
L94	-11 473.140	3 163 725.520		R92	-9 430.480	3 165 539.460			
L95	-12 883.480	3 162 019.180		R93	-9 794.290	3 165 259.880			
L96	-13 181.840	3 161 657.790		R93X	-9 794.090	3 165 259.320			
L97	-13 285.700	3 161 532.240		R94	-9 938.210	3 165 149.040			
L98	-13 360.510	3 161 441.940		R95	-10 569.220	3 164 664.120			
L99	-13 934.220	3 160 746.960		R96	-10 863.220	3 164 438.210			
L100	-13 955.350	3 160 719.360		R97	-10 972.740	3 164 351.660			
L101	-13 998.100	3 160 660.770		R98	-11 135.100	3 164 205.710			
L102	-14 056.820	3 160 568.500		R99	-11 303.680	3 163 991.600			

Vel 8 Van 10
Sheet of

P765/09

PADRESERWE KOÖRDINATE / ROAD RESERVE CO-ORDINATES						
LINKERKANT/LEFT HAND SIDE				REGTERKANT/RIGHT HAND SIDE		
	Y	X	WG 21°		Y	X
L103	-14 330.390	3 160	080.130	R100	-11 368.530	3 163 908.990
L104	-14 306.490	3 160	053.430	R101	-11 439.120	3 163 819.300
L105	-14 414.740	3 159	920.710	R102	-11 470.500	3 163 783.140
L106	-14 417.750	3 159	923.990	R103	-11 474.390	3 163 774.530
L107	-14 707.900	3 159	405.620	R104	-11 494.260	3 163 749.060
L108	-16 079.420	3 156	956.410	R105	-11 494.250	3 163 748.480
L109	-16 321.200	3 156	522.410	R106	-12 903.600	3 162 043.750
L110	-16 402.840	3 156	375.510	R107	-13 166.710	3 161 725.170
L111	-16 749.230	3 155	752.250	R108	-13 201.970	3 161 682.790
L112	-16 799.880	3 155	661.290	R109	-13 210.630	3 161 681.000
L113	-17 000.460	3 155	301.810	R110	-13 216.650	3 161 673.300
L114	-17 066.570	3 155	183.570	R111	-13 234.190	3 161 651.640
L115	-17 161.950	3 155	021.950	R112	-13 241.010	3 161 650.990
L116	-17 274.900	3 154	819.230	R113	-13 248.270	3 161 626.690
L117	-17 295.130	3 154	781.010	R114	-13 315.290	3 161 545.440
L118	-17 326.340	3 154	701.290	R115	-13 357.660	3 161 493.980
L119	-17 352.410	3 154	613.880	R116	-13 377.790	3 161 493.520
L120	-17 416.100	3 154	374.930	R117	-13 385.320	3 161 484.440
L121	-17 479.430	3 154	138.190	R118	-13 383.490	3 161 469.640
L122	-17 497.790	3 154	068.890	R119	-13 382.760	3 161 463.490
L123	-17 498.370	3 154	069.010	R120	-13 999.550	3 160 718.640
L124	-17 947.160	3 152	392.890	R121	-14 080.910	3 160 589.380
L125	-17 968.070	3 152	323.210	R122	-14 428.250	3 159 968.690
L126	-18 009.920	3 152	222.820	R123	-15 058.790	3 158 842.950
L127	-18 063.680	3 152	127.750	R124	-15 348.230	3 158 325.420
L128	-18 128.070	3 152	039.480	R125	-15 686.040	3 157 722.380
L129	-18 199.380	3 151	962.820	R126	-15 695.270	3 157 720.910
L130	-18 193.070	3 151	947.370	R127	-15 696.190	3 157 718.640
L131	-18 198.300	3 151	942.740	R128	-15 707.670	3 157 696.180
L132	-18 199.920	3 151	944.540	R129	-15 705.350	3 157 687.890
L133	-18 214.110	3 151	948.810	R130	-15 983.113	3 157 192.058
L134	-18 336.440	3 151	830.810	R131	-16 000.870	3 157 179.290
L135	-18 466.990	3 151	705.330	R132	-16 036.220	3 157 154.590
L136	-18 729.970	3 151	451.850	R133	-16 097.340	3 157 045.640
L137	-18 777.160	3 151	407.550	R134	-16 098.530	3 157 025.860
L138	-18 867.650	3 151	333.700	R135	-16 101.240	3 156 981.190
L139	-18 910.620	3 151	304.400	R136	-16 346.150	3 156 544.770
L140	-18 957.840	3 151	276.630	R137	-16 351.220	3 156 548.270
L141	-19 022.250	3 151	244.410	R138	-16 354.800	3 156 544.650
L142	-19 184.580	3 151	175.030	R139	-16 788.770	3 155 759.960
L143	-19 273.180	3 151	145.010	R140	-16 867.120	3 155 618.180
L144	-19 285.930	3 151	141.350	R141	-16 879.690	3 155 618.370
L145	-19 358.300	3 151	122.990	R142	-16 882.350	3 155 612.100
L146	-19 454.740	3 151	108.370	R143	-16 875.030	3 155 603.710
L147	-19 537.260	3 151	103.430	R144	-17 033.630	3 155 317.340
L148	-20 069.100	3 151	116.240	R145	-17 188.720	3 155 037.760
L149	-20 097.120	3 151	113.640	R146	-17 292.290	3 154 853.490
				R147	-17 338.420	3 154 758.570
				R148	-17 352.170	3 154 717.170
				R149	-17 377.690	3 154 642.220
				R150	-17 412.890	3 154 507.990

Vel	9	Van	10	P765/09
Sheet		of		

PADRESERWE KOÖRDINATE / ROAD RESERVE CO-ORDINATES

LINKERKANT/LEFT HAND SIDE

REGTERKANT/RIGHT HAND SIDE

Y

X

WG 21°

Y

X

R151	-17	504.340	3	154	167.500
R152	-17	820.520	3	152	986.030
R153	-17	830.470	3	152	980.950
R154	-17	832.540	3	152	976.940
R155	-17	825.550	3	152	967.390
R156	-17	973.180	3	152	415.760
R157	-17	993.530	3	152	345.650
R158	-18	033.690	3	152	245.340
R159	-18	086.300	3	152	151.070
R160	-18	150.710	3	152	061.550
R161	-18	229.580	3	151	976.450
R162	-18	794.530	3	151	433.770
R163	-18	873.270	3	151	368.380
R164	-18	890.660	3	151	356.070
R165	-18	970.480	3	151	305.320
R166	-19	031.780	3	151	274.410
R167	-19	197.130	3	151	206.850
R168	-19	365.140	3	151	156.550
R169	-19	539.270	3	151	136.920
R170	-19	996.860	3	151	151.720
R171	-20	101.340	3	151	143.840

Vel	10	Van	10
Sheet		of	

P765/09

Printed by and obtainable from the Government Printer, Bosman Street, Private Bag X85, Pretoria, 0001
Publications: Tel: (012) 334-4508, 334-4509, 334-4510
Advertisements: Tel: (012) 334-4673, 334-4674, 334-4504
Subscriptions: Tel: (012) 334-4735, 334-4736, 334-4737
Cape Town Branch: Tel: (021) 465-7531

Gedruk deur en verkrygbaar by die Staatsdrukker, Bosmanstraat, Privaatsak X85, Pretoria, 0001
Publikasies: Tel: (012) 334-4508, 334-4509, 334-4510
Advertensies: Tel: (012) 334-4673, 334-4674, 334-4504
Subskripsies: Tel: (012) 334-4735, 334-4736, 334-4737
Kaapstad-tak: Tel: (021) 465-7531