

**IMPORTANT NOTICE**

The Government Printing Works will not be held responsible for faxed documents not received due to errors on the fax machine or faxes received which are unclear or incomplete. Please be advised that an "OK" slip, received from a fax machine, will not be accepted as proof that documents were received by the GPW for printing. If documents are faxed to the GPW it will be the sender's responsibility to phone and confirm that the documents were received in good order.

Furthermore the Government Printing Works will also not be held responsible for cancellations and amendments which have not been done on original documents received from clients.

**CONTENTS****INHOUD**

<i>No.</i>	<i>Page No.</i>	<i>Gazette No.</i>	<i>No.</i>	<i>Bladsy No.</i>	<i>Koerant No.</i>
<b>GOVERNMENT NOTICE</b>			<b>GOEWERMENSKENNISGEWING</b>		
<b>Transport, Department of</b>			<b>Vervoer, Departement van</b>		
<i>Government Notice</i>			<i>Goewermentskennisgewing</i>		
908			908		
South African National Roads Agency Limited and the National Roads Act (7/1998): The South African National Roads Agency Limited: Declaration amendment of National Road N18 Section 6: Amendment of Declaration No. 731 of 2005 .....	3	33634	Suid-Afrikaanse Nasionale Padagentskap Beperk en die Nasionale Paaie Wet (7/1998): Die Suid-Afrikaanse Nasionale Padagentskap Beperk: Verklaring wysiging van Nasionale Pad N18 Seksie 6: Wysiging van Verklaring No. 731 van 2005 .....	4	33634

---

## GOVERNMENT NOTICE

---

### DEPARTMENT OF TRANSPORT

No. 908

15 October 2010

## THE SOUTH AFRICAN NATIONAL ROADS AGENCY LIMITED

Registration No: 98/09584/06

---

### DECLARATION AMENDMENT OF NATIONAL ROAD N18 SECTION 6

#### AMENDMENT OF DECLARATION NO. 731 OF 2005

By virtue of section 40(1)(b) of the South African National Roads Agency Limited and the National Roads Act, 1998 (Act No. 7 of 1998), I hereby amend Declaration No. 731 of 2005 by substituting the Annexure paragraph (III), the descriptive section from Neverset up to Mafikeng, with the subjoined sheets 1 to 8 of Plan No. P729/08.

(National Road N18 Section 6: Neverset - Mafikeng)



---

MINISTER OF TRANSPORT

---

## GOEWERMENTSKENNISGEWING

---

DEPARTEMENT VAN VERVOER

No. 908

15 Oktober 2010

### DIE SUID-AFRIKAANSE NASIONALE PADAGENTSKAP BEPERK

Registrasie No: 98/09584/06

---

#### VERKLARING WYSIGING VAN NASIONALE PAD N18 SEKSIE 6

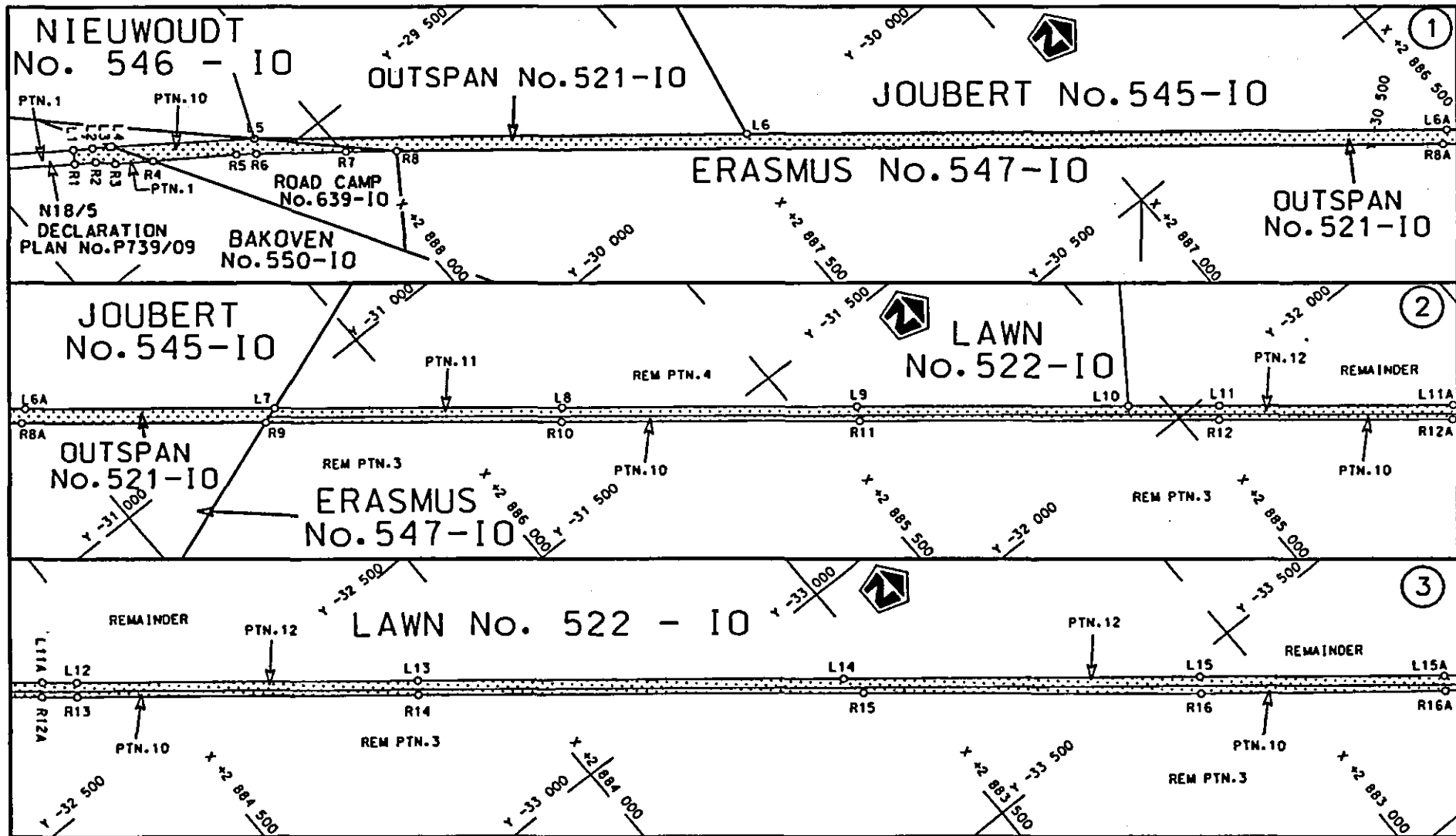
##### WYSIGING VAN VERKLARING NO. 731 VAN 2005

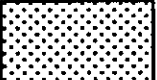
Kragtens Artikel 40(1)(b) van die Suid-Afrikaanse Nasionale Padagentskap Beperk en die Nasionale Paaie Wet, 1998 (Wet no.7 van 1998), wysig ek hiermee Verklaring no. 731 van 2005 deur die Bylae paragraaf (III), die beskrywende gedeelte vanaf Neverset tot by Mafikeng, te vervang met meegaande velle 1 tot 8 van Plan no. P729/08.

**(Nasionale Pad N18 Seksie 6 Neverset - Mafikeng)**



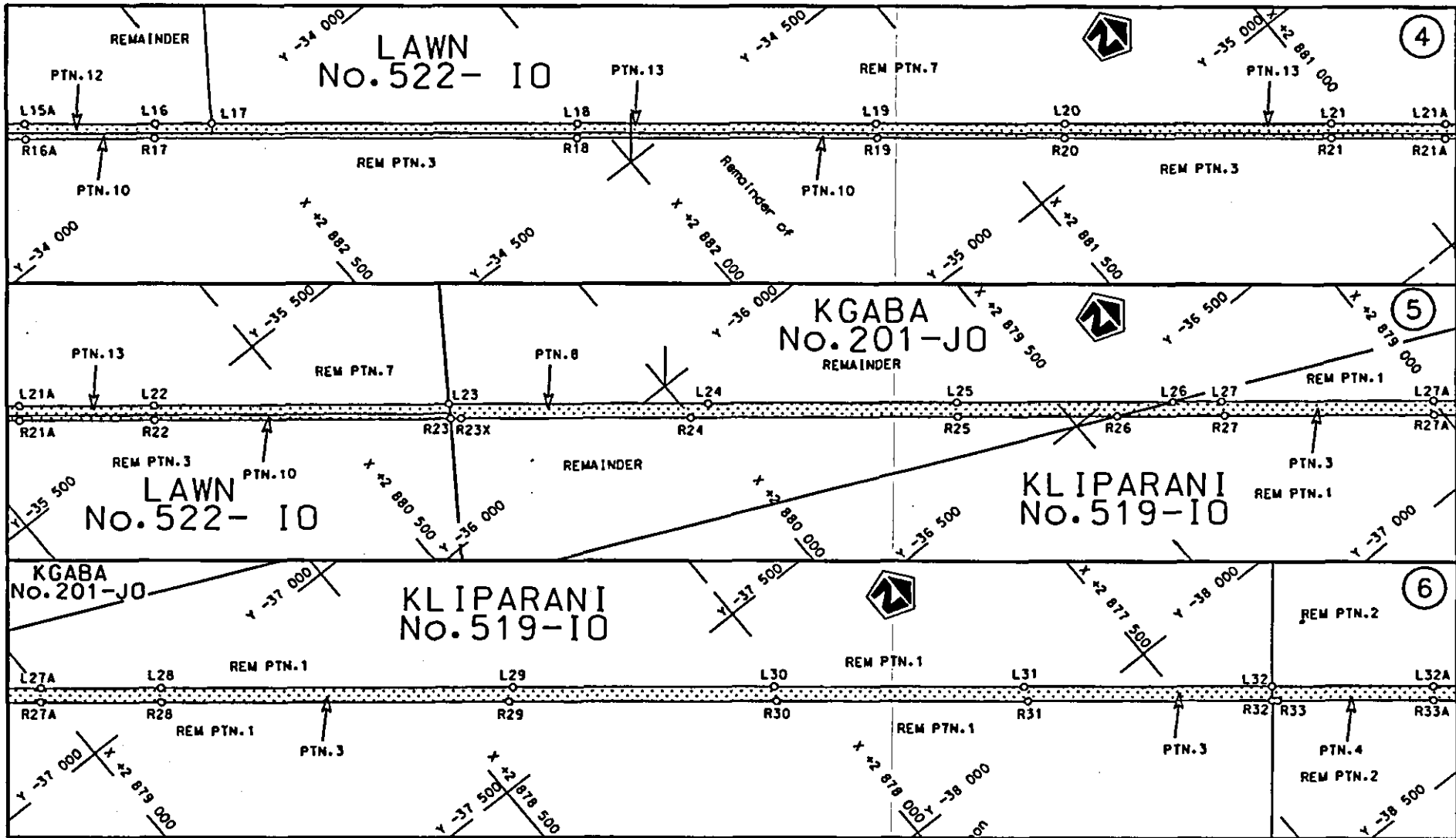
**MINISTER VAN VERVOER**




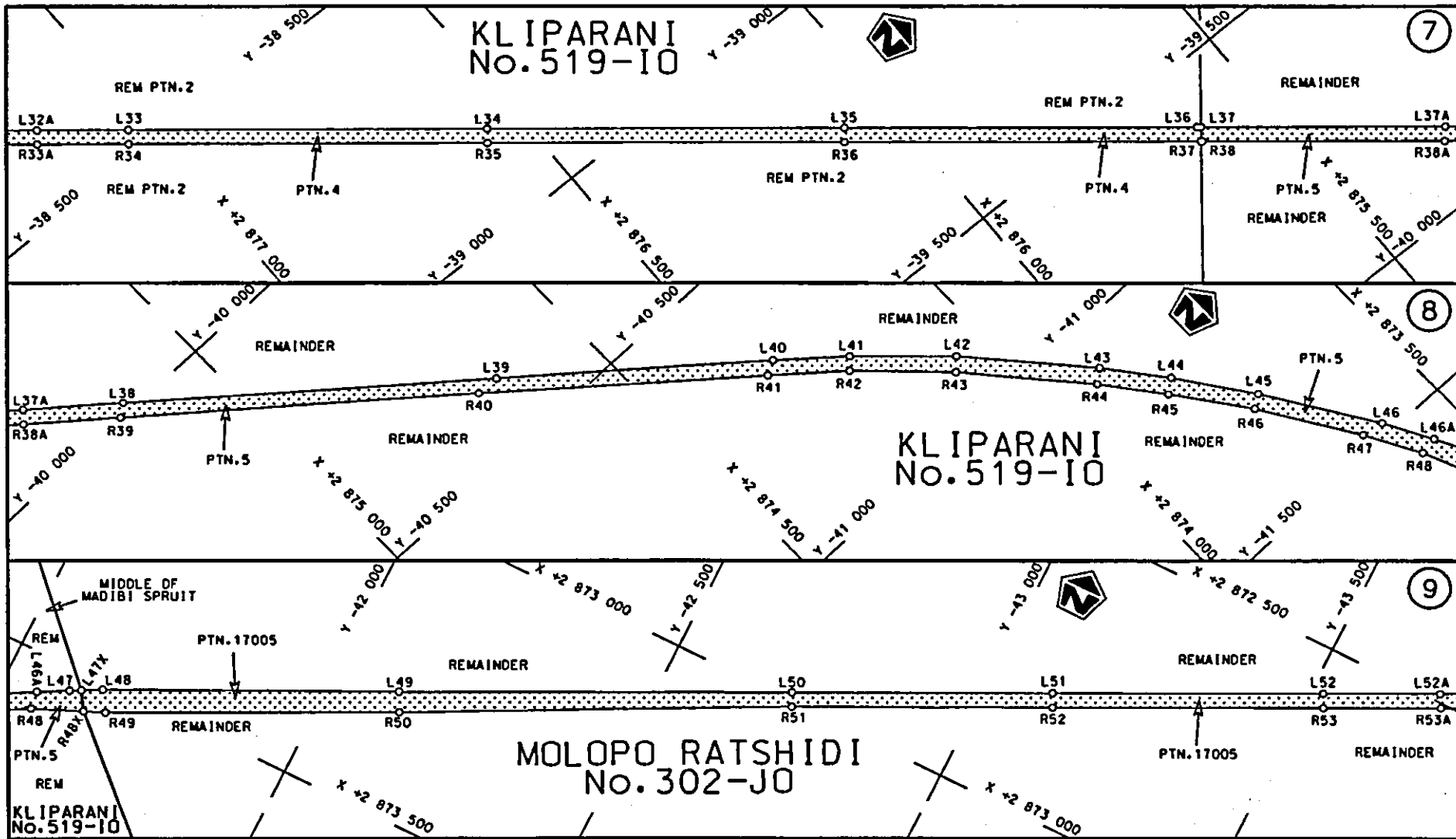
Suid-Afrikaanse Padagentskap Bpk. South African National Roads Agency Ltd.	Die figuur getoon The figure shown 	steldie padreserwe voor van 'n gedeelte represents the road reserve of a portion van Nasionale Roete N18 of National Route N18 Seksie 6 Section 6	Vel 1 van 8 Sheet 1 of 8 Plan P729/08
---	--	--	---

STAATSKOERANT, 15 OKTOBER 2010

No. 33634 5

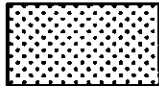


<p>Suid-Afrikaanse Padagentskap Bpk. South African National Roads Agency Ltd.</p>	<p>Dis figuur getoon The figure shown</p> 	<p>steldie padreserwe voor van 'n gedeelte represents the road reserve of a portion van Nasionale Roete of National Route</p> <p>N18</p>	<p>Vel Sheet 2 van 8 of</p> <p>Plan P728/08</p>
---	--	--	---



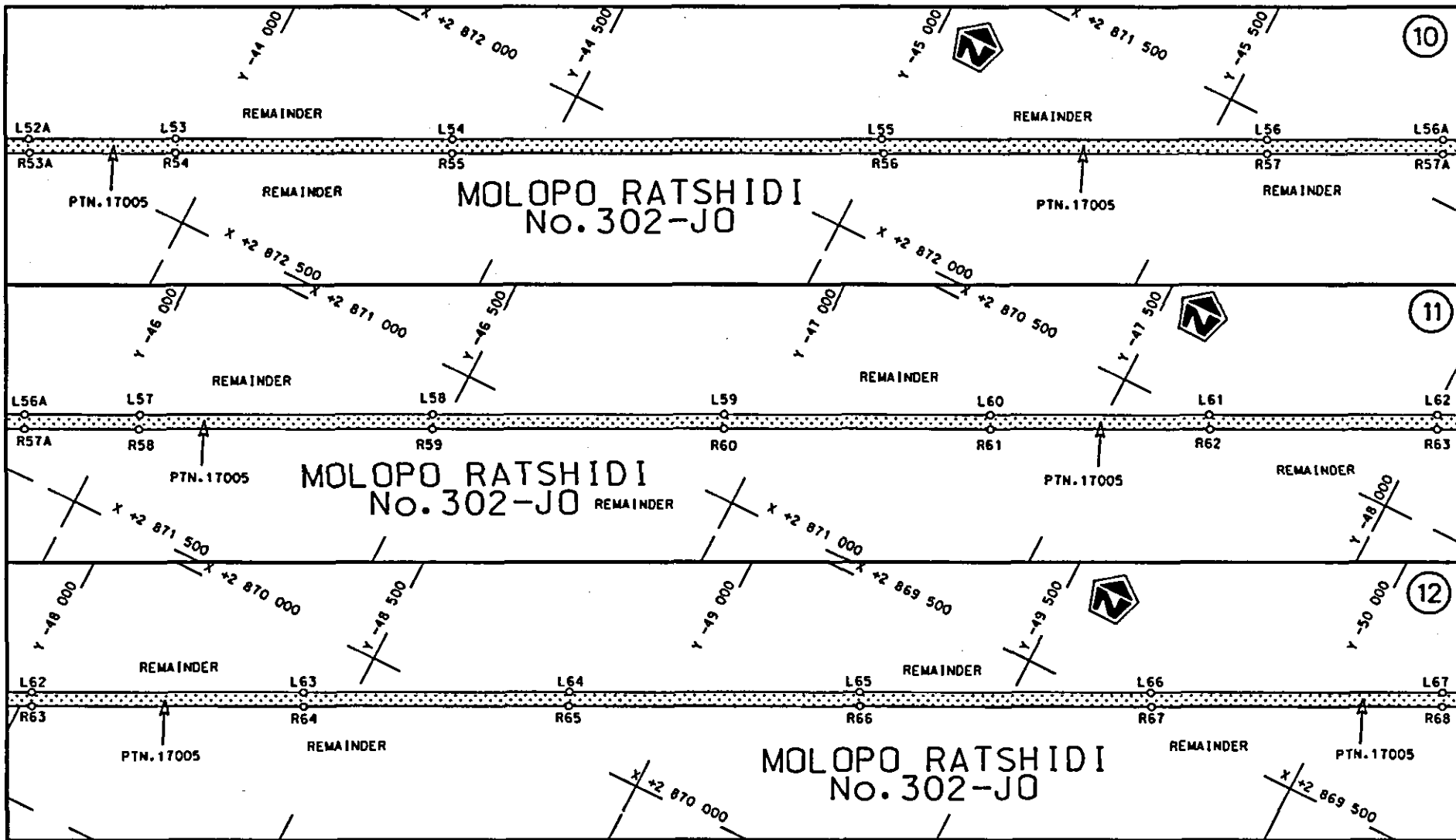
Suid-Afrikaanse Padagentskap Bpk.  
South African National Roads Agency Ltd.

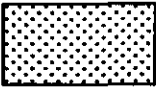
Die figuur getoon  
The figure shown

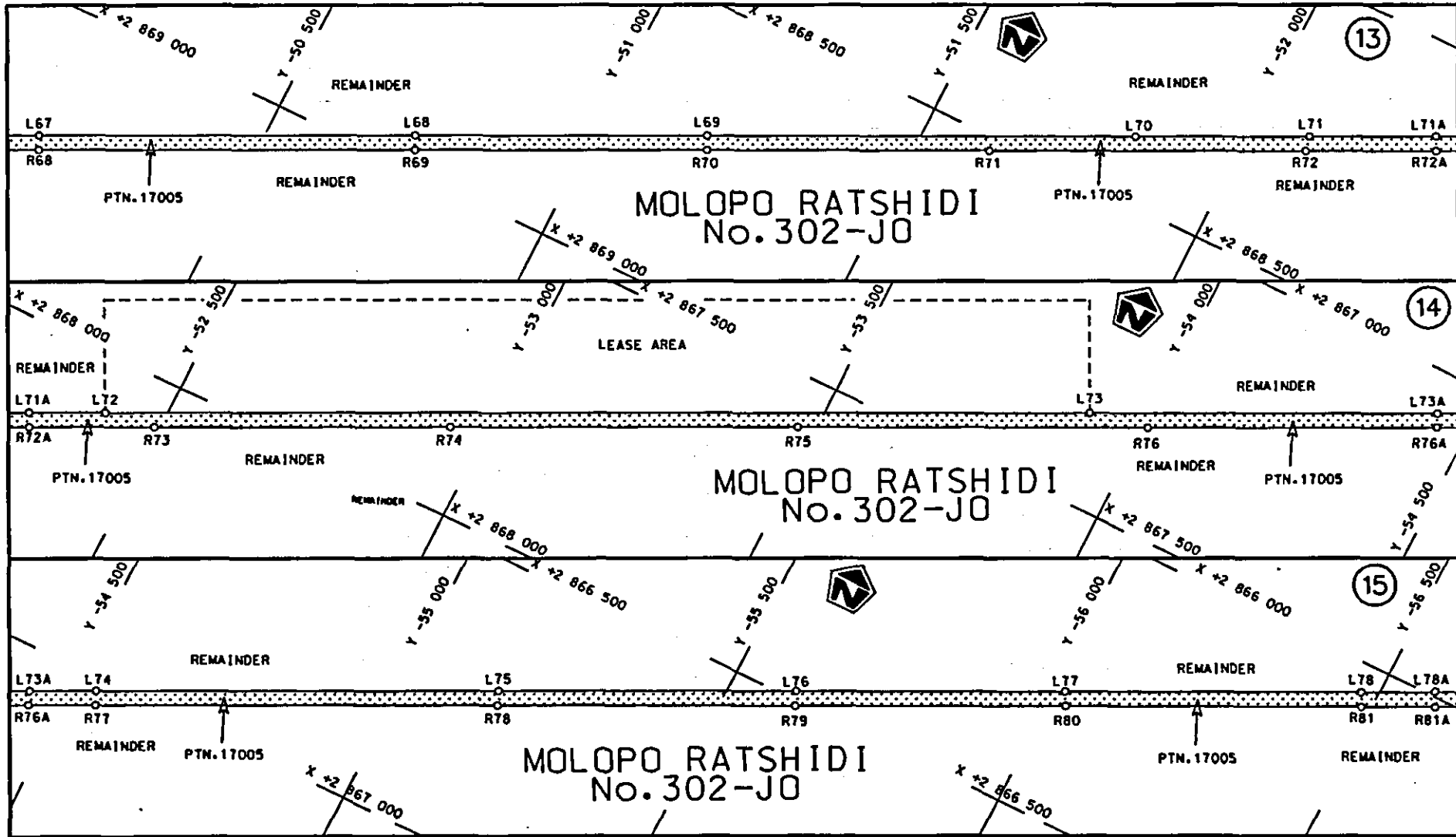


steldie padreserwe voor van 'n gedeelte  
represents the road reserve of a portion  
van Nasionale Roete N18 Seksie Section  
of National Route 6

Vel Sheet 3 van of 8  
Plan P729/08

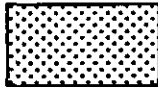


<p>Suid-Afrikaanse Padagentskap Bpk. South African National Roads Agency Ltd.</p>	<p>Die figuur getoon The figure shown</p> 	<p>stel die padreserwe voor van 'n gedeelte represents the road reserve of a portion van Nasionale Roete N18 Seksie of National Route N18 Section 6</p>	<p>Vel Sheet 4 van of 8 Plan P729/08</p>
---	--	---	--



Suid-Afrikaanse Padagentskap Bpk.  
South African National Roads Agency Ltd.

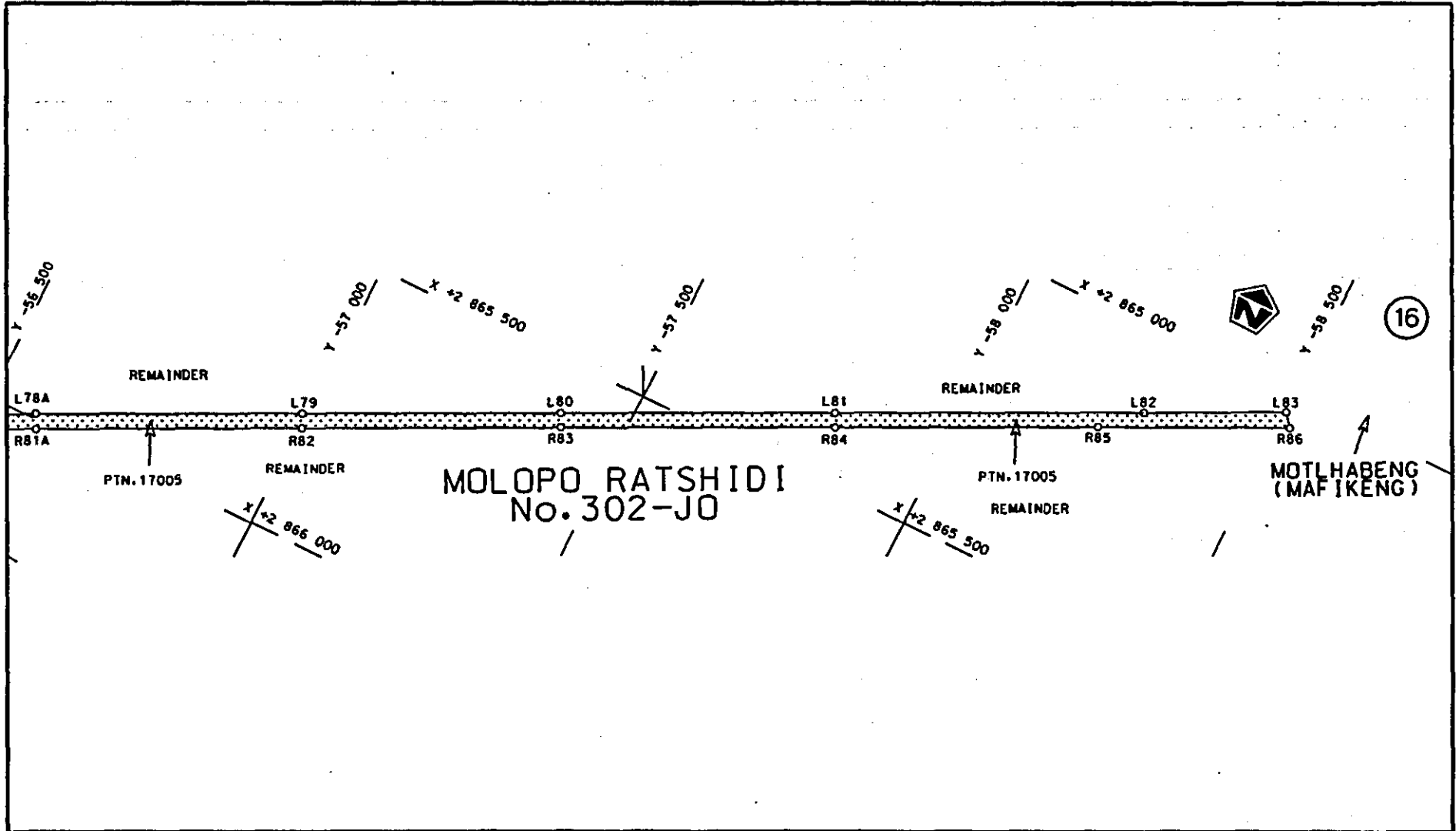
Die figuur getoon  
The figure shown

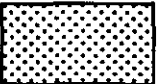


steldie padreserwe voor van 'n gedeelte  
represents the road reserve of a portion  
van Nasionale Roete N18 Seksie 6  
of National Route N18 Section 6

Vel Sheet 5 van of 8  
Plan P729/08





<p>Suid-Afrikaanse Padogentskap Bpk. South African National Roads Agency Ltd.</p>	<p>Die figuur getoon The figure shown</p> 	<p>stelsel padreserwe voor van 'n gedeelte represents the road reserve of a portion van Nasionale Roete of National Route</p> <p>N18</p>	<table border="1"> <tr> <td>Vel Sheet</td> <td>6 of</td> <td>8</td> </tr> <tr> <td>Plan</td> <td colspan="2">P729/08</td> </tr> </table>	Vel Sheet	6 of	8	Plan	P729/08	
Vel Sheet	6 of	8							
Plan	P729/08								

PADRESERWE KOÖRDINATE				/	ROAD RESERVE CO-ORDINATES			
LINKERKANT/LEFT HAND SIDE					REGTERKANT/RIGHT HAND SIDE			
	Y	X	WG 25°		Y	X		
L1	-29 271.160	2 888	352.360	R1	-29 291.730	2 888	366.530	
L2	-29 289.980	2 888	325.410	R2	-29 312.450	2 888	336.820	
L3	-29 306.550	2 888	300.660	R3	-29 336.070	2 888	313.000	
L4	-29 308.590	2 888	297.890	R4	-29 372.940	2 888	260.320	
L5	-29 452.920	2 888	101.790	R5	-29 454.750	2 888	143.440	
L6	-29 981.070	2 887	448.140	R6	-29 475.630	2 888	116.470	
L7	-31 007.100	2 886	185.960	R7	-29 569.180	2 887	995.960	
L8	-31 316.500	2 885	805.520	R8	-29 623.710	2 887	928.450	
L9	-31 634.590	2 885	414.320	R9	-31 017.180	2 886	213.740	
L10	-31 928.620	2 885	053.060	R10	-31 335.650	2 885	822.470	
L11	-32 026.850	2 884	932.570	R11	-31 657.000	2 885	427.080	
L12	-32 317.460	2 884	574.800	R12	-32 046.210	2 884	948.780	
L13	-32 684.420	2 884	123.580	R13	-32 337.620	2 884	590.410	
L14	-33 143.590	2 883	559.150	R14	-32 704.600	2 884	138.960	
L15	-33 529.380	2 883	084.880	R15	-33 185.070	2 883	548.420	
L16	-33 934.810	2 882	586.160	R16	-33 553.730	2 883	102.490	
L17	-33 995.320	2 882	510.540	R17	-33 953.700	2 882	602.830	
L18	-34 389.430	2 882	027.340	R18	-34 408.420	2 882	043.770	
L19	-34 711.510	2 881	631.480	R19	-34 732.470	2 881	645.490	
L20	-34 915.470	2 881	380.660	R20	-34 934.860	2 881	396.700	
L21	-35 203.630	2 881	026.370	R21	-35 223.350	2 881	042.170	
L22	-35 472.960	2 880	695.220	R22	-35 492.580	2 880	711.380	
L23	-35 789.790	2 880	305.070	R23	-35 811.040	2 880	319.960	
L24	-36 069.950	2 879	962.140	R23X	-35 822.170	2 880	306.280	
L25	-36 338.470	2 879	631.470	R24	-36 069.830	2 880	001.850	
L26	-36 571.940	2 879	344.630	R25	-36 358.330	2 879	647.080	
L27	-36 624.870	2 879	279.620	R26	-36 530.750	2 879	435.210	
L28	-36 983.620	2 878	838.240	R27	-36 646.920	2 879	292.470	
L29	-37 362.050	2 878	372.980	R28	-37 003.540	2 878	854.430	
L30	-37 644.190	2 878	026.500	R29	-37 377.640	2 878	394.690	
L31	-37 914.600	2 877	694.660	R30	-37 666.780	2 878	039.660	
L32	-38 183.220	2 877	364.770	R31	-37 938.910	2 877	705.580	
L33	-38 456.200	2 877	029.470	R32	-38 202.830	2 877	380.990	
L34	-38 840.830	2 876	556.570	R33	-38 208.890	2 877	373.540	
L35	-39 225.860	2 876	083.660	R34	-38 475.770	2 877	045.080	
L36	-39 606.430	2 875	616.010	R35	-38 860.700	2 876	572.050	
L37	-39 610.920	2 875	610.490	R36	-39 245.370	2 876	099.480	
L38	-39 982.830	2 875	152.950	R37	-39 630.590	2 875	626.270	
L39	-40 384.460	2 874	659.760	R38	-39 631.990	2 875	624.560	
L40	-40 684.660	2 874	294.290	R39	-39 998.610	2 875	173.980	
L41	-40 769.230	2 874	193.430	R40	-40 383.680	2 874	700.170	
L42	-40 894.290	2 874	060.120	R41	-40 697.570	2 874	318.560	
L43	-41 076.410	2 873	895.720	R42	-40 787.400	2 874	211.040	
L44	-41 172.010	2 873	817.870	R43	-40 913.800	2 874	079.630	
L45	-41 296.320	2 873	729.580	R44	-41 094.240	2 873	917.740	
L46	-41 479.610	2 873	610.140	R45	-41 191.230	2 873	842.520	
L47	-41 609.710	2 873	537.780	R46	-41 311.330	2 873	751.940	
L47X	-41 627.370	2 873	528.120	R47	-41 472.590	2 873	648.340	
L48	-41 659.070	2 873	510.790	R48	-41 565.040	2 873	595.410	
L49	-42 110.310	2 873	286.390	R48X	-41 647.020	2 873	559.520	
L50	-42 708.490	2 872	985.100	R49	-41 681.140	2 873	544.580	

Vel	7	Van	8	P729/08
Sheet		of		

PADRESERWE KOÖRDINATE				ROAD RESERVE CO-ORDINATES			
LINKERKANT/LEFT HAND SIDE				REGTERKANT/RIGHT HAND SIDE			
	Y	X	WG 25°		X		
L51	-43 107.050	2 872 784.340		R50	-42 126.970	2 873 318.400	
L52	-43 520.520	2 872 576.050		R51	-42 719.460	2 873 007.820	
L53	-43 923.200	2 872 373.030		R52	-43 118.400	2 872 807.200	
L54	-44 343.090	2 872 161.740		R53	-43 532.050	2 872 598.840	
L55	-44 997.310	2 871 831.700		R54	-43 934.530	2 872 395.860	
L56	-45 585.430	2 871 535.340		R55	-44 354.150	2 872 184.450	
L57	-46 029.920	2 871 311.460		R56	-45 011.900	2 871 853.040	
L58	-46 474.060	2 871 087.350		R57	-45 596.980	2 871 558.110	
L59	-46 917.720	2 870 864.030		R58	-46 040.070	2 871 335.010	
L60	-47 323.860	2 870 659.330		R59	-46 485.340	2 871 110.310	
L61	-47 657.910	2 870 490.770		R60	-46 928.960	2 870 886.730	
L62	-48 006.970	2 870 314.890		R61	-47 335.620	2 870 681.710	
L63	-48 419.840	2 870 106.790		R62	-47 670.820	2 870 513.020	
L64	-48 824.230	2 869 902.900		R63	-48 018.260	2 870 337.490	
L65	-49 266.230	2 869 680.150		R64	-48 431.550	2 870 129.360	
L66	-49 710.370	2 869 456.020		R65	-48 834.440	2 869 926.050	
L67	-50 156.910	2 869 231.010		R66	-49 278.010	2 869 702.700	
L68	-50 729.080	2 868 942.350		R67	-49 723.160	2 869 478.150	
L69	-51 173.830	2 868 718.150		R68	-50 167.840	2 869 254.110	
L70	-51 828.610	2 868 387.850		R69	-50 739.930	2 868 965.200	
L71	-52 094.520	2 868 253.720		R70	-51 185.080	2 868 741.010	
L72	-52 404.970	2 868 097.050		R71	-51 615.880	2 868 523.480	
L73	-53 905.790	2 867 340.450		R72	-52 100.200	2 868 279.570	
L74	-54 539.730	2 867 021.570		R73	-52 490.810	2 868 082.560	
L75	-55 151.720	2 866 713.020		R74	-52 940.720	2 867 855.790	
L76	-55 605.530	2 866 484.650		R75	-53 470.070	2 867 588.360	
L77	-56 017.550	2 866 277.450		R76	-54 005.500	2 867 318.860	
L78	-56 471.530	2 866 049.240		R77	-54 550.820	2 867 044.140	
L79	-56 991.670	2 865 787.350		R78	-55 162.170	2 866 736.280	
L80	-57 387.120	2 865 589.180		R79	-55 616.630	2 866 508.100	
L81	-57 806.920	2 865 378.030		R80	-56 030.220	2 866 299.520	
L82	-58 281.710	2 865 139.260		R81	-56 483.630	2 866 071.690	
L83	-58 499.900	2 865 028.680		R82	-57 002.770	2 865 810.450	
				R83	-57 398.650	2 865 611.200	
				R84	-57 818.540	2 865 400.210	
				R85	-58 222.780	2 865 196.940	
				R86	-58 518.220	2 865 050.680	

Vel	8	Van	8	P729/08
Sheet		of		







Printed by and obtainable from the Government Printer, Bosman Street, Private Bag X85, Pretoria, 0001

Publications: Tel: (012) 334-4508, 334-4509, 334-4510  
Advertisements: Tel: (012) 334-4673, 334-4674, 334-4504  
Subscriptions: Tel: (012) 334-4735, 334-4736, 334-4737  
Cape Town Branch: Tel: (021) 465-7531

Gedruk deur en verkrygbaar by die Staatsdrukker, Bosmanstraat, Privaatsak X85, Pretoria, 0001

Publikasies: Tel: (012) 334-4508, 334-4509, 334-4510  
Advertensies: Tel: (012) 334-4673, 334-4674, 334-4504  
Subskripsies: Tel: (012) 334-4735, 334-4736, 334-4737  
Kaapstad-tak: Tel: (021) 465-7531