

IMPORTANT NOTICE

The Government Printing Works will not be held responsible for faxed documents not received due to errors on the fax machine or faxes received which are unclear or incomplete. Please be advised that an "OK" slip, received from a fax machine, will not be accepted as proof that documents were received by the GPW for printing. If documents are faxed to the GPW it will be the sender's responsibility to phone and confirm that the documents were received in good order.

Furthermore the Government Printing Works will also not be held responsible for cancellations and amendments which have not been done on original documents received from clients.

CONTENTS**INHOUD**

<i>No.</i>	<i>Page No.</i>	<i>Gazette No.</i>	<i>No.</i>	<i>Bladsy No.</i>	<i>Koerant No.</i>
GOVERNMENT NOTICE			GOEWERMENSKENNISGEWING		
Transport, Department of			Vervoer, Departement van		
<i>Government Notice</i>			<i>Goewermenskennisgewing</i>		
910			910		
South African National Roads Agency Limited and the National Roads Act (7/1998): The South African National Roads Agency Limited: Declaration amendment of National Road N5 Section 1: Amendment of Declaration No. 547 of 2003			Suid-Afrikaanse Nasionale Padagentskap Beperk en die Nasionale Paaie Wet (7/1998): Die Suid-Afrikaanse Nasionale Padagentskap Beperk: Verklaring wysiging van Nasionale Pad N5 Seksie 1: Wysiging van Verklaring No. 547 van 2003		
	3	33636		4	33636

GOVERNMENT NOTICE

DEPARTMENT OF TRANSPORT

No. 910

19 October 2010

THE SOUTH AFRICAN NATIONAL ROADS AGENCY LIMITED

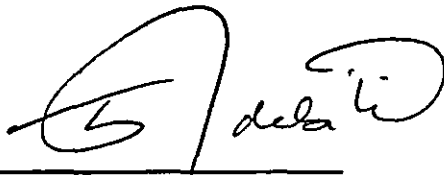
Registration No: 98/09584/06

DECLARATION AMENDMENT OF NATIONAL ROAD N5 SECTION 1

AMENDMENT OF DECLARATION NO. 547 OF 2003

By virtue of section 40(1)(b) of the South African National Roads Agency Limited and the National Roads Act, 1998 (Act No. 7 of 1998), I hereby amend Declaration No. 547 of 2003 Annexure paragraph (I) by substituting the descriptive section from Harrismith up to Kestell, with the subjoined sheets 1 to 14 of Plan No. P781/09.

(National Road N5 Section 1: Harrismith – Kestell)



MINISTER OF TRANSPORT

GOEWERMENTSKENNISGEWING

DEPARTEMENT VAN VERVOER

No. 910

19 Oktober 2010

**DIE SUID-AFRIKAANSE NASIONALE
PADAGENTSKAP BEPERK**

Registrasie No: 98/09584/06

VERKLARING WYSIGING VAN NASIONALE PAD N5 SEKSIE 1.

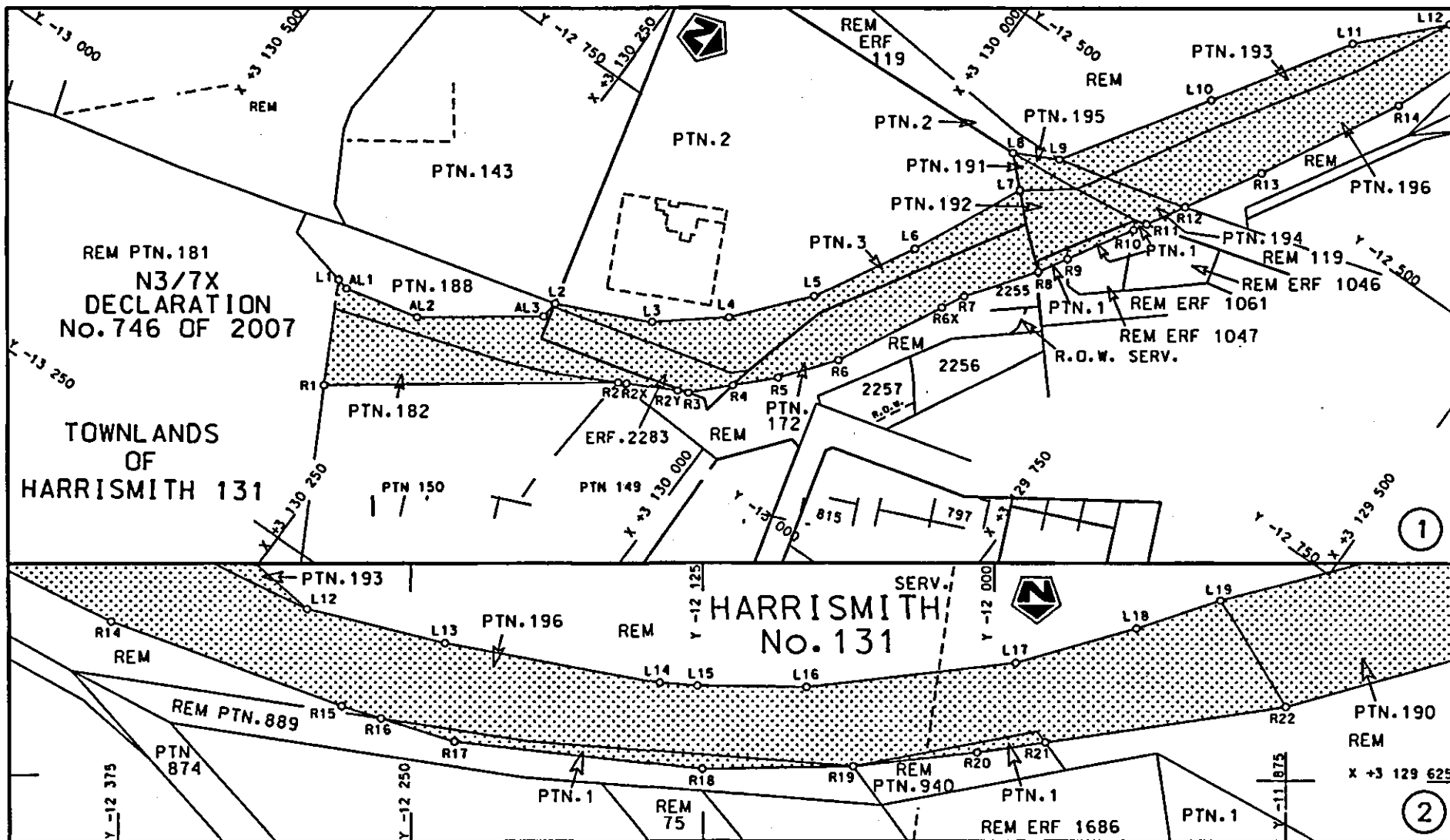
WYSIGING VAN VERKLARING NO. 547 VAN 2003

Kragtens Artikel 40(1)(b) van die Suid-Afrikaanse Nasionale Padagentskap Beperk en die Nasionale Paaie Wet, 1998 (Wet no. 7 van 1998), wysig ek hiermee Verklaring no. 547 van 2003 Bylae paragraaf (I), deur die beskrywende gedeelte vanaf Harrismith tot by Kestell, te vervang met meegaande velle 1 tot 14 van Plan no. P781/09.

(Nasionale Pad N5 Seksie 1: Harrismith – Kestell

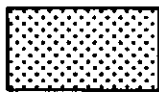


MINISTER VAN VERVOER



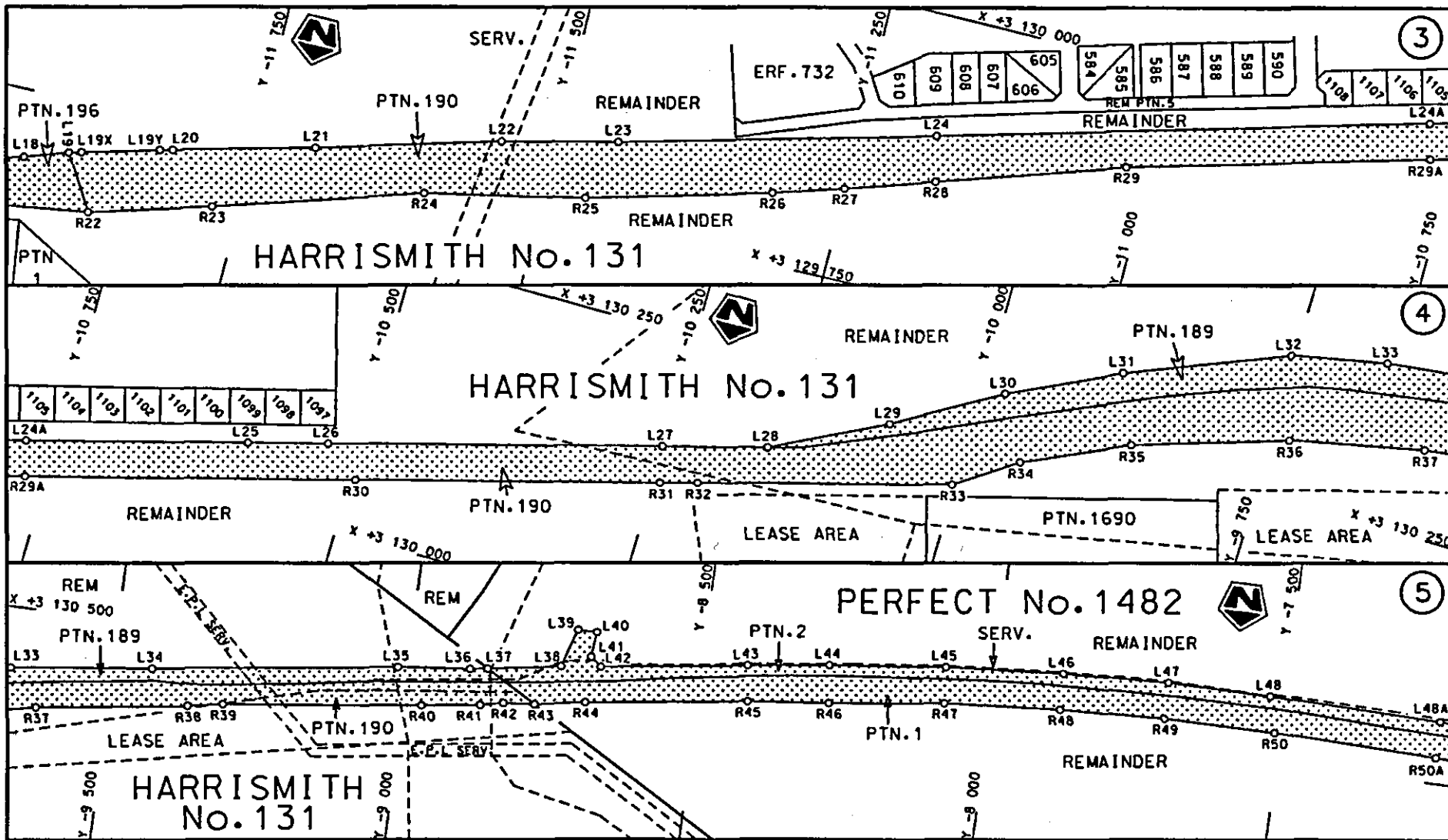
Die Suid Afrikaanse Nasionale Padagentskap Beperk
 The South African National Roads Agency Limited

Die figuur getoon
 The figure shown

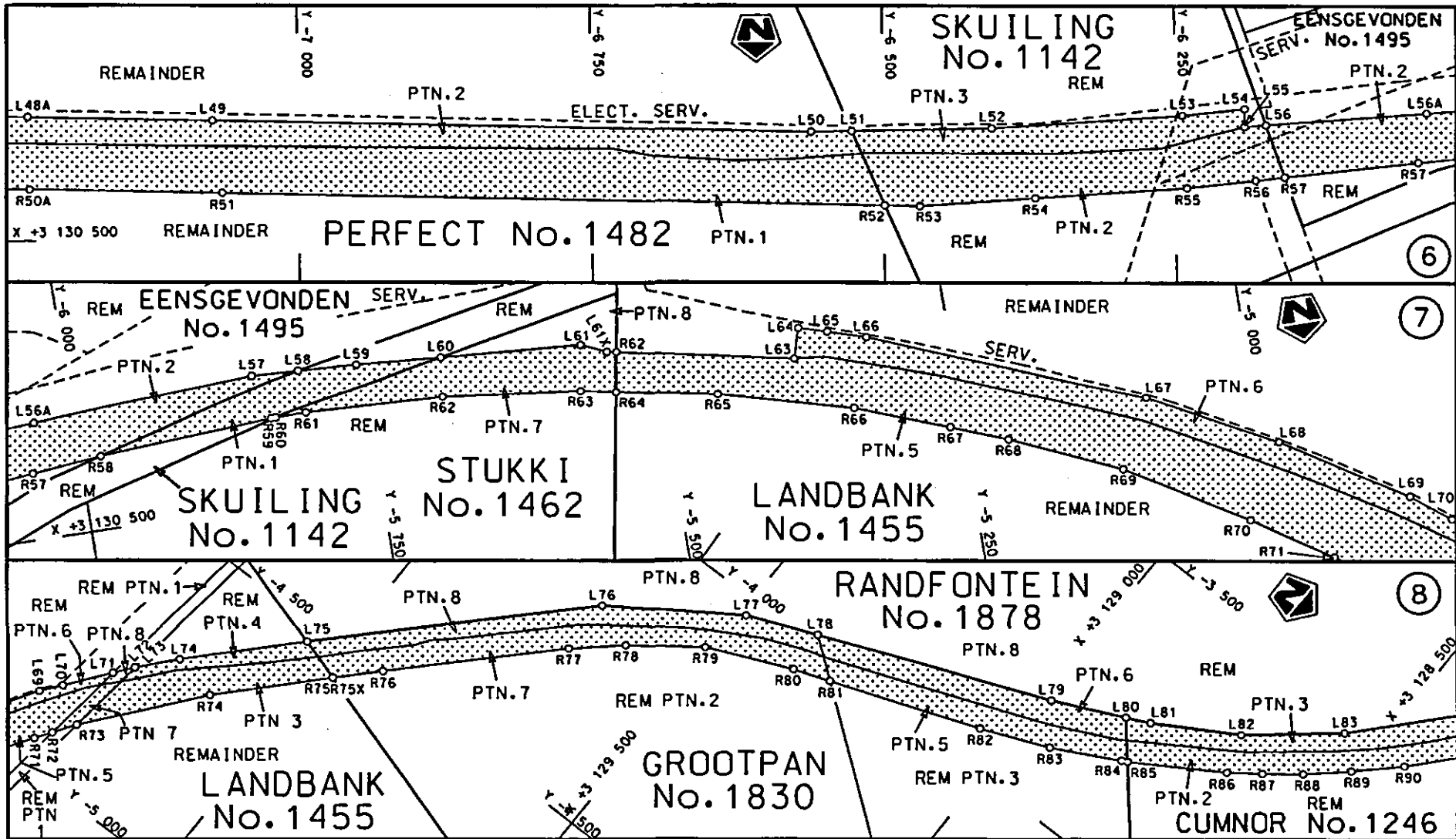



stel die padreserwe voor van 'n gedeelte
 represents the road reserve of a portion
 van Nasionale Roete N5 Seksie 1
 of National Route N5 Section 1

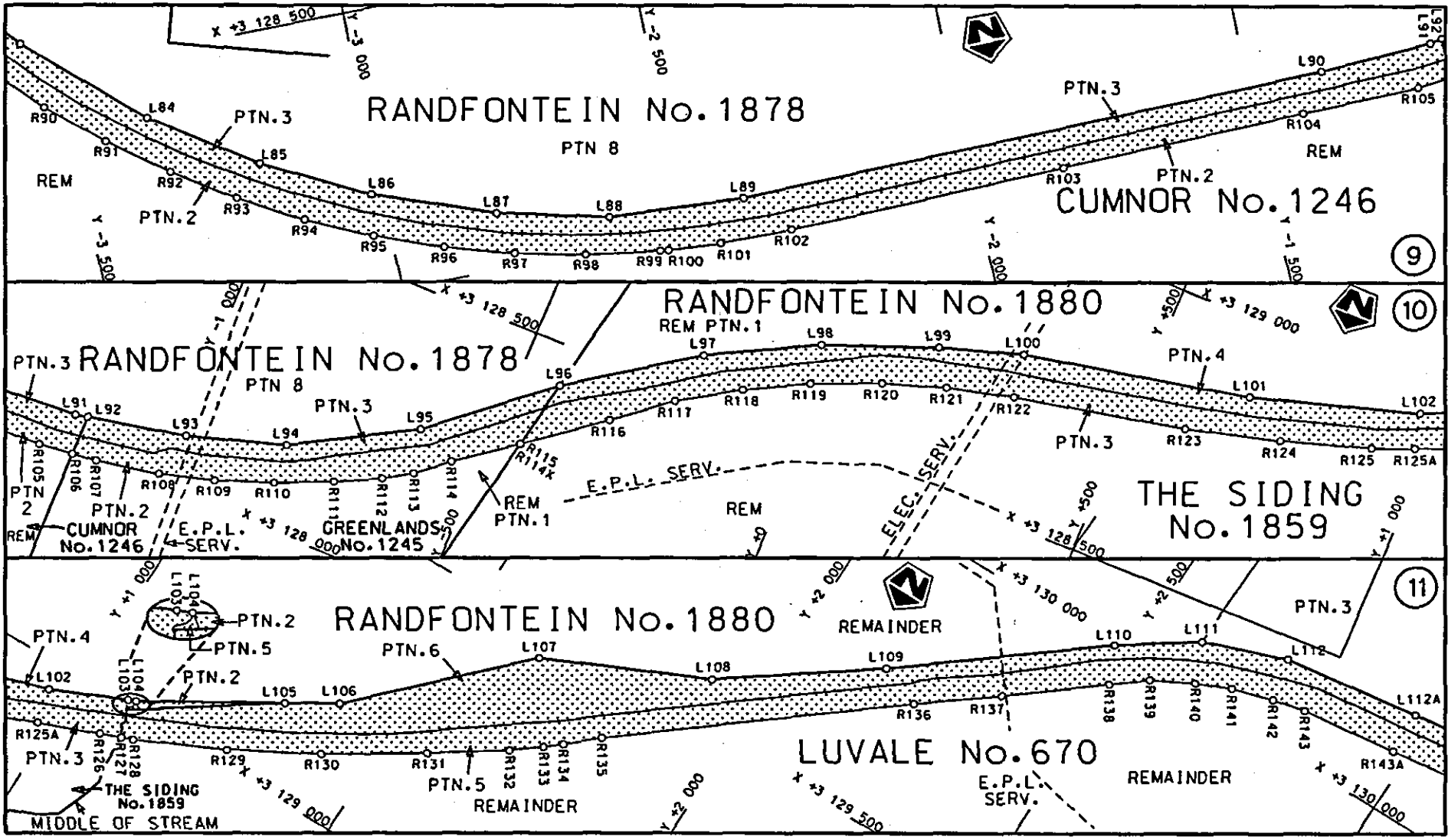
Vel Sheet 1 van 14
 Plan P781/09

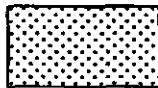


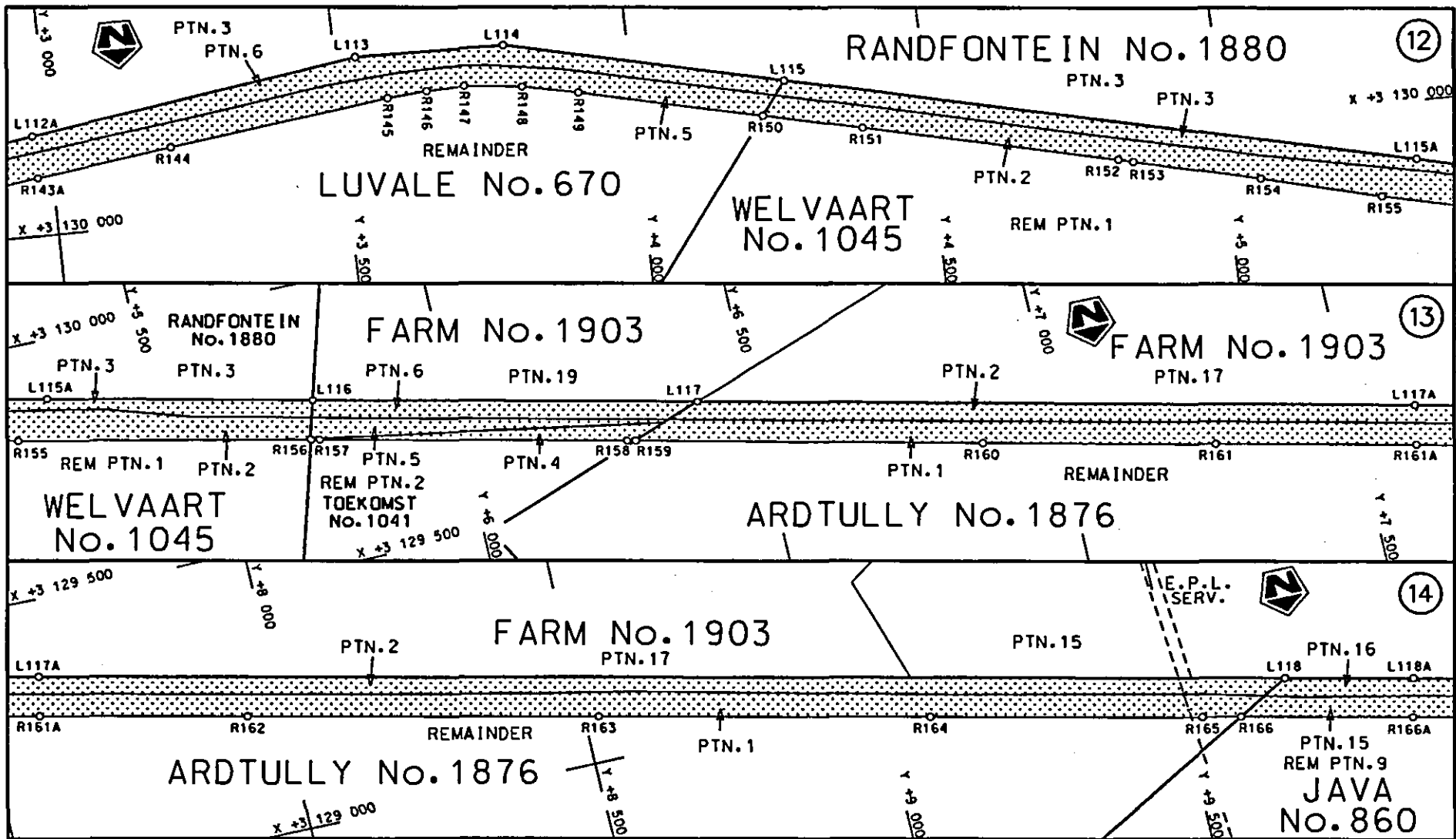
<p>Die Suid Afrikaanse Nasionale Podagentskap Beperk The South African National Roads Agency Limited</p>	<p>Die figuur getoon The figure shown</p>		<p>steldie padreserwe voor van 'n gedeelte represents the road reserve of a portion van Nasionale Roete N5 of National Route N5</p>	<p>Vel Sheet 2 of 14</p>
			<p>Seksie Section 1</p>	<p>Plan P781/09</p>



Die Suid Afrikaanse Nasionale Padagentskap Beperk The South African National Roads Agency Limited	Die figuur getoon The figure shown		steldie padreserwe voor van 'n gedeelte represents the road reserve of a portion van Nasionale Roete N5 Seksie of National Route N5 Section 1	Vel Sheet 3 van 14 Plan P781/09
--	---------------------------------------	--	--	------------------------------------

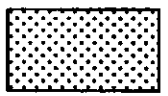


<p>Die Suid Afrikaanse Nasionale Padagentskap Beperk The South African National Roads Agency Limited</p>	<p>Die figuur getoon The figure shown</p> 	<p>steldie padreserwe voor van 'n gedeelte represents the road reserve of a portion van Nasionale Roete N5 Sektie 1 of National Route N5 Section 1</p>	<p>Vel Sheet 4 van of 14 Plan P781/09</p>
--	--	--	---



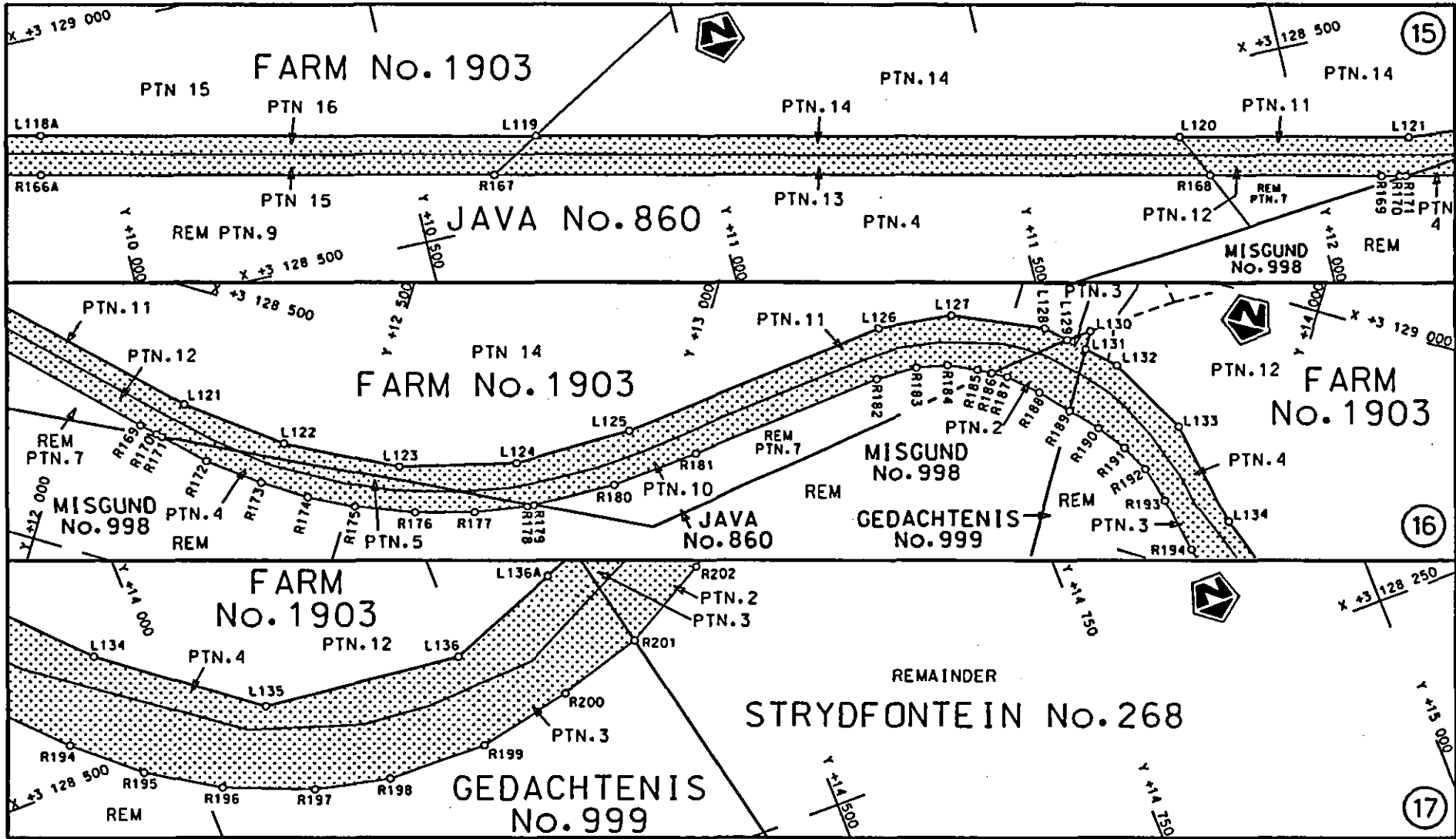
Die Suid Afrikaanse Nasionale Padagentskap Beperk
 The South African National Roads Agency Limited

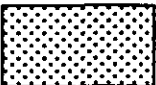
Die figuur getoon
 The figure shown

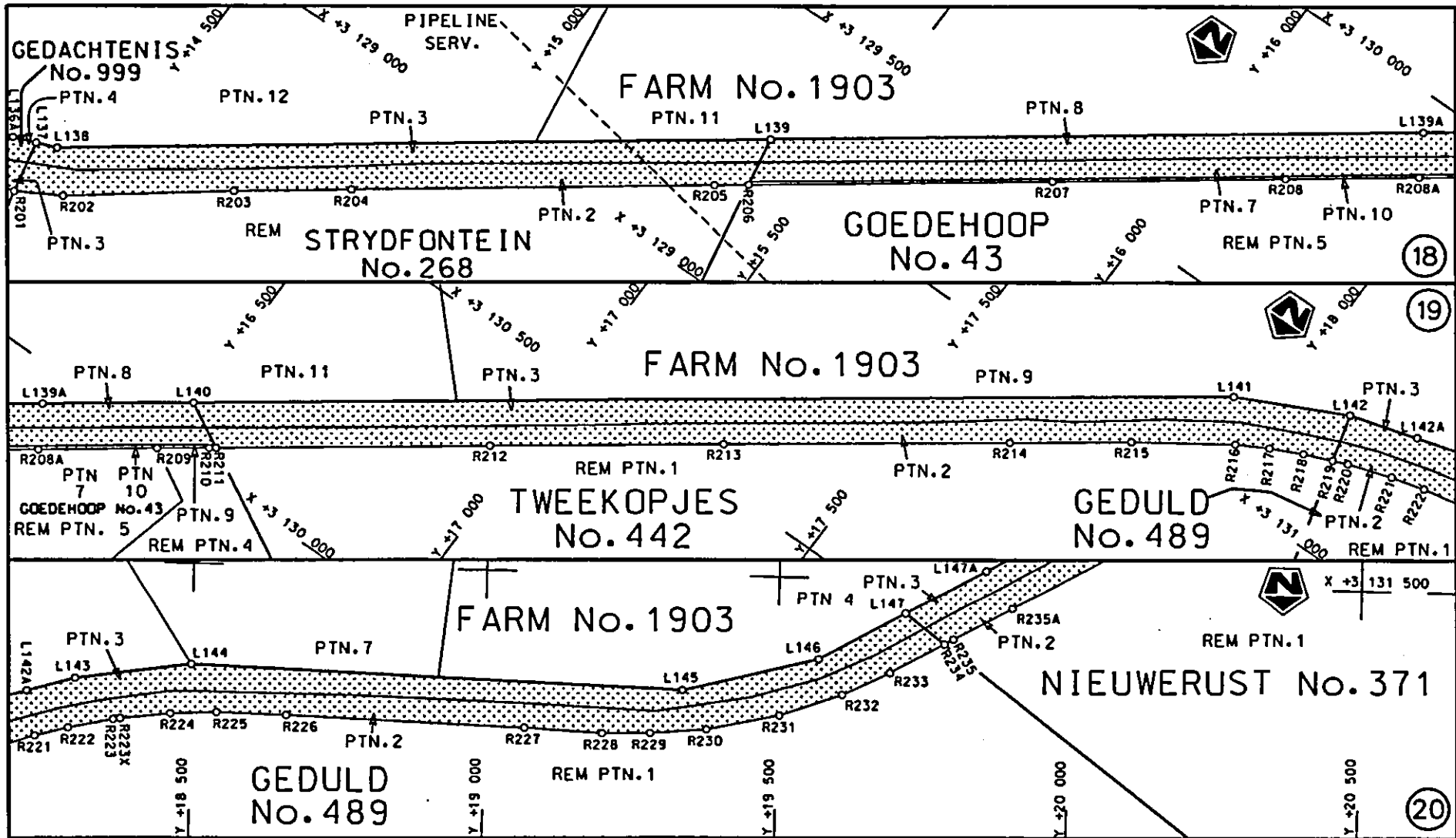


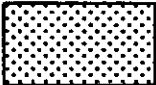
steldie padreserwa voor van 'n gedeelte
 represents the road reserve of a portion
 van Nasionale Roete N5 Seksie 1
 of National Route N5 Section 1

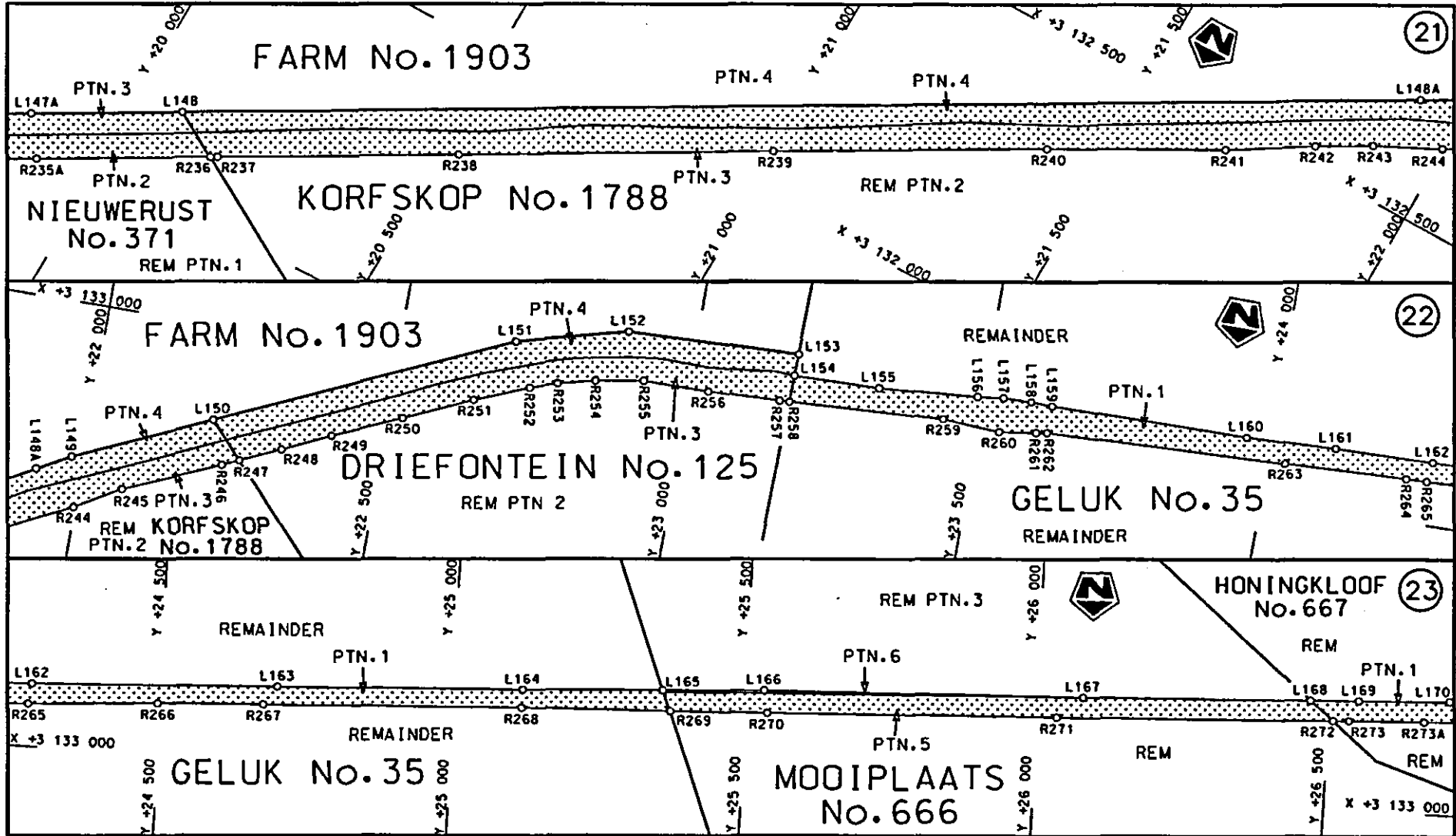
Vel Sheet 5 van 14
 Plan P781/09

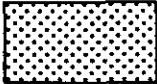


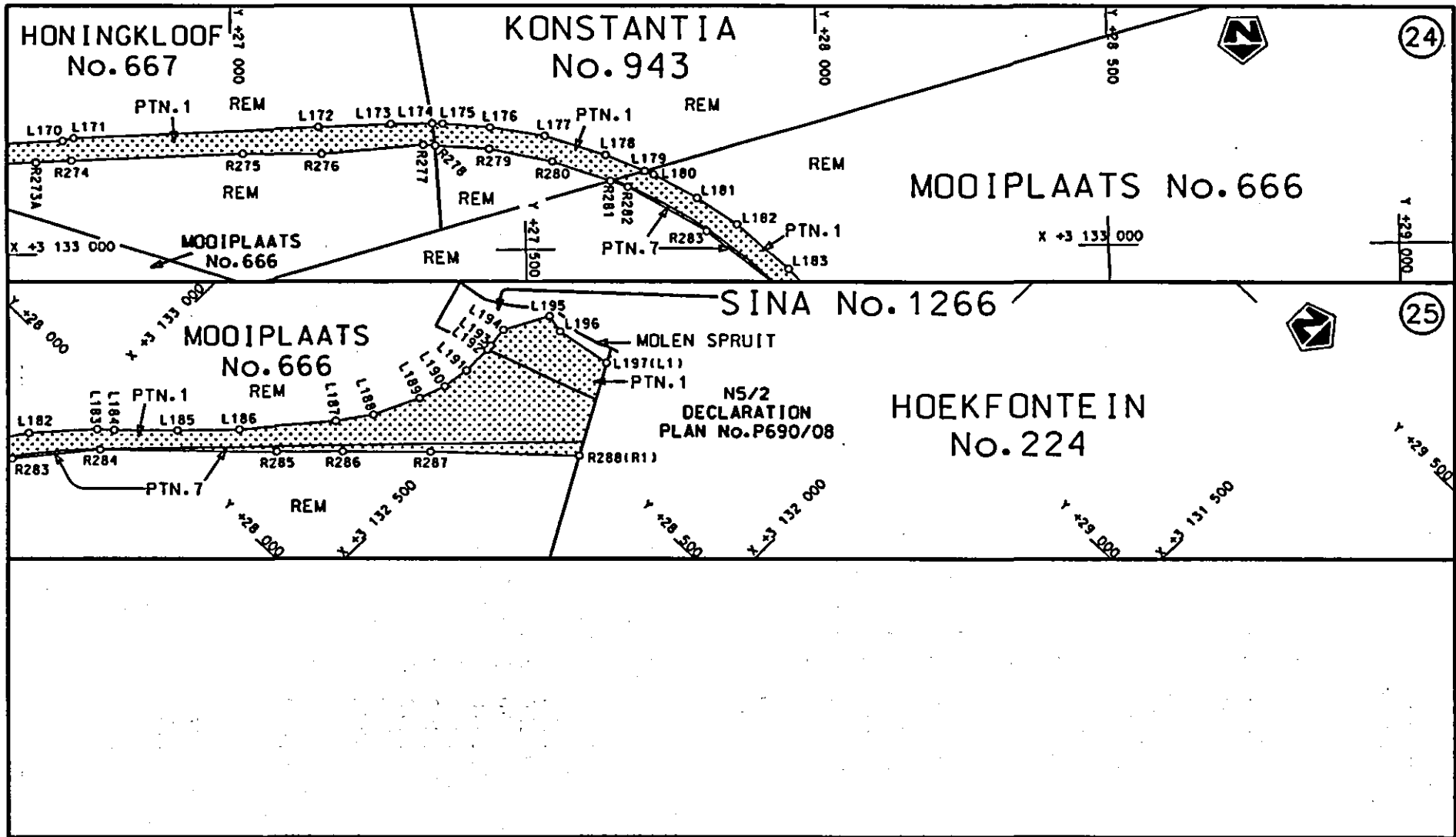
<p>Die Suid Afrikaanse Nasionale Padagentskap Beperk The South African National Roads Agency Limited</p>	<p>Die figuur getoon The figure shown</p>		<p>Vel Sheet 6 van 14 Plan P781/09</p>
<p>steldie padreserwe voor van 'n gedeelte represents the road reserve of a portion van Nasionale Roete N5 Seksie Section 1 of National Route</p>			<p>1</p>



Die Suid Afrikaanse Nasionale Padagentskap Beperk	Die figuur getoon	 steldie podereserve voor van 'n gedeelte represents the road reserve of a portion	Vel Sheet 7 van 14
The South African National Roads Agency Limited	The figure shown	van Nasionale Roete N5 Sektie Section 1	Plan P781/09

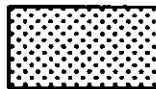


<p>Die Suid Afrikaanse Nasionale Padagentskop Beperk The South African National Roads Agency Limited</p>	<p>Die figuur getoon The figure shown</p>		<p>steldie padreserwe voor van 'n gedeelte represents the road reserve of a portion van Nasionale Roete N5 Seksie Section of National Route 1</p>	<p>Vel Sheet 8 van of 14 Plan P781/09</p>
--	---	--	---	---



Die Suid Afrikaanse Nasionale Padagentskap Beperk
The South African National Roads Agency Limited

Die figuur getoon
The figure shown



stel die padreserwe voor van 'n gedeelte
represents the road reserve of a portion
van Nasionale Roete N5 Seksie Section 1
of National Route

Vel Sheet 9 van 14
of

Plan P781/09

PADRESERWE KOÖRDINATE / ROAD RESERVE CO-ORDINATES											
LINKERKANT/LEFT HAND SIDE					REGTERKANT/RIGHT HAND SIDE						
	Y		X	WG 29°		Y		X			
L1	-13	034.590	3	130	340.760	R1	-13	118.060	3	130	296.650
AL1	-13	037.120	3	130	330.510	R2	-12	969.000	3	130	093.820
AL2	-13	022.670	3	130	266.760	R2X	-12	965.600	3	130	087.300
AL3	-12	958.700	3	130	179.460	R2Y	-12	945.690	3	130	047.730
L2	-12	943.920	3	130	178.040	R3	-12	941.850	3	130	039.050
L3	-12	908.970	3	130	100.890	R4	-12	914.110	3	130	012.320
L4	-12	867.210	3	130	050.060	R5	-12	885.810	3	129	985.060
L5	-12	809.360	3	130	001.900	R6	-12	842.810	3	129	952.040
L6	-12	723.030	3	129	955.220	R6X	-12	753.120	3	129	906.900
L7	-12	629.490	3	129	912.770	R7	-12	733.760	3	129	897.140
L8	-12	606.220	3	129	936.840	R8	-12	678.640	3	129	858.060
L9	-12	587.660	3	129	901.100	R9	-12	654.740	3	129	844.370
L10	-12	468.650	3	129	825.740	R10	-12	600.710	3	129	813.440
L11	-12	356.840	3	129	756.250	R11	-12	590.040	3	129	807.290
L12	-12	294.180	3	129	698.430	R12	-12	558.500	3	129	789.150
L13	-12	235.690	3	129	683.600	R13	-12	495.790	3	129	753.270
L14	-12	143.640	3	129	666.420	R14	-12	378.120	3	129	692.420
L15	-12	127.510	3	129	665.220	R15	-12	279.650	3	129	655.800
L16	-12	080.940	3	129	664.840	R16	-12	262.810	3	129	650.480
L17	-11	991.010	3	129	676.100	R17	-12	231.520	3	129	640.460
L18	-11	936.100	3	129	695.160	R18	-12	125.410	3	129	628.740
L19	-11	902.800	3	129	704.280	R19	-12	060.780	3	129	630.220
L20	-11	817.040	3	129	727.770	R20	-12	007.530	3	129	636.690
L21	-11	699.300	3	129	758.330	R21	-11	978.280	3	129	641.250
L22	-11	546.100	3	129	801.420	R22	-11	874.990	3	129	657.350
L23	-11	448.700	3	129	824.490	R23	-11	772.900	3	129	687.090
L24	-11	184.320	3	129	894.670	R24	-11	600.000	3	129	741.290
L25	-10	592.720	3	130	056.320	R25	-11	464.700	3	129	769.910
L26	-10	526.730	3	130	074.500	R26	-11	310.000	3	129	812.180
L27	-10	251.090	3	130	150.450	R27	-11	250.800	3	129	830.660
L28	-10	163.760	3	130	174.120	R28	-11	176.200	3	129	855.250
L29	-10	068.620	3	130	223.210	R29	-11	020.300	3	129	906.670
L30	-9	980.870	3	130	276.080	R30	-10	495.500	3	130	050.060
L31	-9	888.330	3	130	321.380	R31	-10	244.130	3	130	118.630
L32	-9	753.800	3	130	375.890	R32	-10	213.090	3	130	127.570
L33	-9	672.310	3	130	392.080	R33	-10	002.210	3	130	185.910
L34	-9	432.510	3	130	421.190	R34	-9	951.830	3	130	221.630
L35	-9	016.000	3	130	476.660	R35	-9	864.180	3	130	262.310
L36	-8	893.370	3	130	489.400	R36	-9	734.820	3	130	303.840
L37	-8	863.630	3	130	494.050	R37	-9	620.620	3	130	327.660
L38	-8	738.870	3	130	513.560	R38	-9	363.670	3	130	362.840
L39	-8	718.040	3	130	581.210	R39	-9	304.130	3	130	373.740
L40	-8	685.560	3	130	581.090	R40	-8	967.590	3	130	414.940
L41	-8	689.870	3	130	536.750	R41	-8	868.220	3	130	428.710
L42	-8	671.600	3	130	521.460	R42	-8	829.380	3	130	437.250
L43	-8	422.320	3	130	555.720	R43	-8	776.070	3	130	441.750
L44	-8	282.840	3	130	574.420	R44	-8	690.090	3	130	455.930
L45	-8	083.350	3	130	596.840	R45	-8	414.160	3	130	492.630
L46	-7	881.970	3	130	611.740	R46	-8	275.340	3	130	508.110
L47	-7	701.150	3	130	618.320	R47	-8	077.920	3	130	533.220
L48	-7	524.360	3	130	617.610	R48	-7	879.780	3	130	547.970

Vel	10	Van	14	P781/09
Sheet		of		

PADRESERWE KOÖRDINATE / ROAD RESERVE CO-ORDINATES

LINKERKANT/LEFT HAND SIDE				REGTERKANT/RIGHT HAND SIDE			
	Y	X	WG 29°		X		
L49	-7 072.870	3 130	605.370	R49	-7 700.830	3 130	554.440
L50	-6 561.950	3 130	590.340	R50	-7 510.410	3 130	553.950
L51	-6 527.020	3 130	590.730	R51	-7 064.990	3 130	541.320
L52	-6 407.050	3 130	592.050	R52	-6 499.170	3 130	524.760
L53	-6 243.660	3 130	601.720	R53	-6 469.300	3 130	523.880
L54	-6 190.150	3 130	607.160	R54	-6 369.990	3 130	530.000
L55	-6 190.320	3 130	591.450	R55	-6 240.040	3 130	537.810
L56	-6 171.940	3 130	592.670	R56	-6 181.270	3 130	543.890
L57	-5 843.940	3 130	614.430	R57	-6 156.230	3 130	546.610
L58	-5 804.410	3 130	612.500	R58	-5 982.290	3 130	564.250
L59	-5 754.550	3 130	610.070	R59	-5 833.560	3 130	574.430
L60	-5 682.400	3 130	605.390	R60	-5 829.440	3 130	574.470
L61	-5 562.500	3 130	597.610	R61	-5 803.560	3 130	574.710
L61X	-5 541.360	3 130	588.330	R62	-5 686.260	3 130	570.480
L62	-5 533.470	3 130	586.770	R63	-5 569.000	3 130	557.410
L63	-5 383.900	3 130	557.090	R64	-5 539.310	3 130	551.870
L64	-5 376.340	3 130	583.320	R65	-5 453.840	3 130	535.920
L65	-5 352.470	3 130	576.130	R66	-5 340.130	3 130	505.400
L66	-5 319.960	3 130	566.050	R67	-5 261.090	3 130	476.460
L67	-5 091.600	3 130	476.010	R68	-5 213.750	3 130	458.080
L68	-4 985.120	3 130	419.970	R69	-5 120.500	3 130	417.370
L69	-4 881.490	3 130	355.400	R70	-5 020.030	3 130	356.250
L70	-4 848.760	3 130	330.090	R71	-4 951.560	3 130	310.790
L71	-4 779.120	3 130	275.930	R72	-4 924.770	3 130	292.990
L72	-4 748.880	3 130	252.410	R73	-4 888.080	3 130	268.590
L73	-4 748.600	3 130	252.190	R74	-4 706.520	3 130	122.760
L74	-4 690.440	3 130	201.440	R75	-4 553.180	3 129	977.830
L75	-4 530.670	3 130	051.190	R75X	-4 552.910	3 129	977.580
L76	-4 166.890	3 129	695.130	R76	-4 491.180	3 129	917.110
L77	-4 028.760	3 129	490.690	R77	-4 263.620	3 129	693.340
L78	-3 980.460	3 129	374.250	R78	-4 198.680	3 129	620.980
L79	-3 820.990	3 128	989.670	R79	-4 117.500	3 129	511.460
L80	-3 764.890	3 128	870.750	R80	-4 053.840	3 129	369.060
L81	-3 746.670	3 128	832.260	R81	-4 030.800	3 129	307.850
L82	-3 666.180	3 128	697.020	R82	-3 935.540	3 129	054.840
L83	-3 553.480	3 128	560.240	R83	-3 887.790	3 128	940.240
L84	-3 366.740	3 128	388.930	R84	-3 825.370	3 128	821.170
L85	-3 194.370	3 128	269.160	R85	-3 824.700	3 128	820.100
L86	-3 017.770	3 128	176.360	R86	-3 733.870	3 128	674.960
L87	-2 815.270	3 128	101.460	R87	-3 697.870	3 128	626.180
L88	-2 625.970	3 128	054.450	R88	-3 655.000	3 128	570.900
L89	-2 394.070	3 128	039.050	R89	-3 599.280	3 128	509.010
L90	-1 371.970	3 128	054.540	R90	-3 535.650	3 128	443.470
L91	-1 176.830	3 128	063.850	R91	-3 445.460	3 128	362.200
L92	-1 155.650	3 128	068.210	R92	-3 347.510	3 128	285.780
L93	- 986.310	3 128	102.320	R93	-3 245.950	3 128	217.720
L94	- 820.810	3 128	153.120	R94	-3 139.590	3 128	157.300
L95	- 619.310	3 128	267.210	R95	-3 029.270	3 128	104.630
L96	- 426.920	3 128	430.230	R96	-2 914.970	3 128	060.110
L97	- 219.610	3 128	574.010	R97	-2 798.770	3 128	024.340
L98	-39.810	3 128	668.410	R98	-2 678.920	3 127	996.880

Vel	11	Van	14	P781/09
Sheet		of		

PADRESERWE KOÖRDINATE / ROAD RESERVE CO-ORDINATES							
LINKERKANT/LEFT HAND SIDE				REGTERKANT/RIGHT HAND SIDE			
	Y	X	WG 29°			X	
L99	149.390	3 128	742.500	R99	-2 552.500	3 127	977.130
L100	289.290	3 128	787.300	R100	-2 538.260	3 127	975.410
L101	678.790	3 128	867.700	R101	-2 448.300	3 127	968.610
L102	960.990	3 128	953.900	R102	-2 324.260	3 127	967.490
L103	1 086.150	3 129	010.790	R103	-1 842.400	3 127	978.440
L104	1 098.690	3 129	016.490	R104	-1 417.170	3 127	987.850
L105	1 316.210	3 129	150.680	R105	-1 213.540	3 127	992.200
L106	1 396.290	3 129	200.090	R106	-1 154.620	3 127	998.190
L107	1 642.290	3 129	452.190	R107	-1 111.780	3 128	002.550
L108	1 914.090	3 129	579.790	R108	-1 003.670	3 128	022.390
L109	2 157.200	3 129	756.880	R109	- 911.410	3 128	048.280
L110	2 466.500	3 130	004.070	R110	- 815.650	3 128	083.080
L111	2 590.600	3 130	090.370	R111	- 721.320	3 128	123.840
L112	2 733.400	3 130	142.570	R112	- 647.120	3 128	160.740
L113	3 535.800	3 130	260.070	R113	- 600.080	3 128	190.860
L114	3 788.900	3 130	254.260	R114	- 548.100	3 128	234.680
L115	4 260.280	3 130	144.460	R114X	- 451.170	3 128	307.600
L116	5 768.510	3 129	793.140	R115	-450.620	3 128	308.030
L117	6 408.980	3 129	643.950	R116	- 325.310	3 128	406.080
L118	9 686.940	3 128	880.420	R117	- 233.290	3 128	480.440
L119	10 724.290	3 128	638.780	R118	- 133.850	3 128	543.830
L120	11 799.240	3 128	388.380	R119	-30.990	3 128	598.140
L121	12 182.220	3 128	299.170	R120	83.440	3 128	646.820
L122	12 364.820	3 128	281.160	R121	189.150	3 128	682.480
L123	12 564.820	3 128	296.960	R122	303.290	3 128	711.230
L124	12 755.120	3 128	359.460	R123	596.590	3 128	773.490
L125	12 924.520	3 128	466.460	R124	756.940	3 128	816.300
L126	13 284.520	3 128	759.750	R125	907.830	3 128	865.110
L127	13 398.920	3 128	816.850	R126	1 077.760	3 128	934.300
L128	13 558.120	3 128	840.250	R127	1 112.490	3 128	948.440
L129	13 600.200	3 128	831.370	R128	1 131.670	3 128	956.250
L130	13 634.410	3 128	856.410	R129	1 277.540	3 129	028.110
L131	13 635.490	3 128	823.920	R130	1 417.440	3 129	107.370
L132	13 695.020	3 128	811.350	R131	1 570.250	3 129	206.440
L133	13 826.820	3 128	738.350	R132	1 687.120	3 129	286.600
L134	13 955.520	3 128	601.540	R133	1 733.750	3 129	322.990
L135	14 075.920	3 128	507.640	R134	1 760.360	3 129	345.700
L136	14 245.120	3 128	488.940	R135	1 809.840	3 129	390.170
L137	14 371.460	3 128	539.320	R136	2 229.980	3 129	729.270
L138	14 405.530	3 128	552.920	R137	2 350.430	3 129	822.360
L139	15 386.800	3 129	274.600	R138	2 496.180	3 129	939.570
L140	16 497.260	3 130	091.320	R139	2 551.800	3 129	983.410
L141	17 931.660	3 131	146.290	R140	2 620.540	3 130	021.320
L142	18 112.490	3 131	237.060	R141	2 678.430	3 130	046.280
L143	18 301.430	3 131	293.580	R142	2 749.140	3 130	068.070
L144	18 499.140	3 131	322.010	R143	2 806.480	3 130	080.630
L145	19 337.760	3 131	296.460	R144	3 205.260	3 130	133.360
L146	19 569.990	3 131	356.310	R145	3 582.090	3 130	182.640
L147	19 718.120	3 131	440.680	R146	3 649.520	3 130	188.110
L148	20 079.600	3 131	646.540	R147	3 714.270	3 130	189.900
L149	21 979.780	3 132	728.680	R148	3 812.500	3 130	178.600

Vel	12	Van	14	P781/09
Sheet		of		

PADRESERWE KOÖRDINATE / ROAD RESERVE CO-ORDINATES

LINKERKANT/LEFT HAND SIDE				REGTERKANT/RIGHT HAND SIDE			
	Y	X	WG 29°		X		
L150	22 207.600	3 132 833.410		R149	3 907.970	3 130 158.440	
L151	22 693.270	3 133 056.570		R150	4 217.700	3 130 086.180	
L152	22 882.660	3 133 106.010		R151	4 385.780	3 130 046.970	
L153	23 174.900	3 133 115.640		R152	4 816.950	3 129 947.210	
L154	23 174.170	3 133 077.070		R153	4 841.830	3 129 941.050	
L155	23 321.140	3 133 080.720		R154	5 056.840	3 129 888.150	
L156	23 490.200	3 133 094.010		R155	5 261.020	3 129 835.560	
L157	23 534.250	3 133 099.750		R156	5 749.230	3 129 726.460	
L158	23 582.490	3 133 100.930		R157	5 757.890	3 129 724.530	
L159	23 618.970	3 133 099.730		R158	6 285.320	3 129 601.760	
L160	23 957.790	3 133 101.880		R159	6 289.790	3 129 600.710	
L161	24 112.170	3 133 107.570		R160	6 868.660	3 129 464.920	
L162	24 280.970	3 133 111.730		R161	7 258.340	3 129 374.630	
L163	24 700.160	3 133 127.140		R162	7 940.480	3 129 216.270	
L164	25 118.500	3 133 142.430		R163	8 524.710	3 129 080.090	
L165	25 358.190	3 133 153.450		R164	9 078.170	3 128 951.200	
L166	25 532.090	3 133 161.440		R165	9 533.260	3 128 845.480	
L167	26 079.240	3 133 177.290		R166	9 597.850	3 128 831.310	
L168	26 469.780	3 133 191.300		R167	10 639.140	3 128 589.270	
L169	26 553.090	3 133 194.290		R168	11 834.140	3 128 311.520	
L170	26 711.740	3 133 200.850		R169	12 120.570	3 128 243.580	
L171	26 730.580	3 133 205.510		R170	12 151.050	3 128 236.560	
L172	27 148.540	3 133 221.330		R171	12 161.360	3 128 234.200	
L173	27 272.170	3 133 225.660		R172	12 246.290	3 128 214.730	
L174	27 342.920	3 133 225.800		R173	12 347.200	3 128 203.070	
L175	27 360.660	3 133 225.830		R174	12 429.890	3 128 201.870	
L176	27 441.410	3 133 218.250		R175	12 511.430	3 128 208.020	
L177	27 535.110	3 133 201.440		R176	12 612.240	3 128 226.080	
L178	27 639.060	3 133 167.060		R177	12 709.850	3 128 255.150	
L179	27 705.630	3 133 137.720		R178	12 803.230	3 128 294.740	
L180	27 720.740	3 133 131.070		R179	12 804.870	3 128 295.700	
L181	27 794.980	3 133 089.030		R180	12 927.270	3 128 367.090	
L182	27 862.610	3 133 041.230		R181	13 045.030	3 128 461.230	
L183	27 949.080	3 132 962.220		R182	13 306.420	3 128 673.060	
L184	27 968.480	3 132 940.530		R183	13 365.980	3 128 710.900	
L185	28 043.350	3 132 862.550		R184	13 416.130	3 128 730.150	
L186	28 118.780	3 132 788.470		R185	13 467.740	3 128 737.150	
L187	28 243.980	3 132 680.740		R186	13 492.480	3 128 738.260	
L188	28 296.940	3 132 642.540		R187	13 519.750	3 128 739.480	
L189	28 373.170	3 132 607.080		R188	13 580.540	3 128 728.940	
L190	28 418.240	3 132 591.090		R189	13 639.100	3 128 712.610	
L191	28 464.380	3 132 584.070		R190	13 695.880	3 128 696.780	
L192	28 515.620	3 132 584.210		R191	13 748.360	3 128 676.670	
L193	28 517.570	3 132 584.220		R192	13 793.110	3 128 650.430	
L194	28 559.970	3 132 589.210		R193	13 840.670	3 128 606.630	
L195	28 632.330	3 132 549.340		R194	13 907.710	3 128 535.820	
L196	28 626.150	3 132 517.920		R195	13 958.110	3 128 490.910	
L197	28 641.760	3 132 421.830		R196	14 015.940	3 128 454.010	
				R197	14 088.610	3 128 424.300	
				R198	14 151.710	3 128 409.840	
				R199	14 237.430	3 128 408.340	

PADRESERWE KOÖRDINATE / ROAD RESERVE CO-ORDINATES											
REGTERKANT/RIGHT HAND SIDE					REGTERKANT/RIGHT HAND SIDE						
					WG 29°						
					X						
R200	14	318.170	3	128	425.640	R250	22	525.370	3	132	890.500
R201	14	390.700	3	128	447.820	R251	22	639.870	3	132	942.990
R202	14	463.430	3	128	489.610	R252	22	730.480	3	132	980.230
R203	14	695.560	3	128	666.530	R253	22	776.590	3	132	995.220
R204	14	856.700	3	128	785.020	R254	22	839.680	3	133	010.980
R205	15	356.160	3	129	152.510	R255	22	921.270	3	133	024.710
R206	15	402.960	3	129	186.950	R256	23	033.290	3	133	025.290
R207	15	823.290	3	129	496.300	R257	23	156.380	3	133	029.640
R208	16	145.410	3	129	733.460	R258	23	173.280	3	133	030.570
R209	16	493.880	3	129	989.260	R259	23	438.780	3	133	045.090
R210	16	574.900	3	130	048.730	R260	23	536.770	3	133	038.910
R211	16	575.370	3	130	049.080	R261	23	599.880	3	133	048.300
R212	16	950.810	3	130	326.140	R262	23	618.490	3	133	051.500
R213	17	272.940	3	130	563.200	R263	24	030.660	3	133	066.800
R214	17	668.280	3	130	854.000	R264	24	240.890	3	133	074.340
R215	17	836.660	3	130	978.030	R265	24	276.220	3	133	075.650
R216	17	983.210	3	131	079.370	R266	24	497.280	3	133	087.670
R217	18	034.650	3	131	108.310	R267	24	677.720	3	133	094.310
R218	18	087.450	3	131	134.350	R268	25	117.510	3	133	110.410
R219	18	135.120	3	131	154.470	R269	25	371.550	3	133	117.200
R220	18	159.910	3	131	164.930	R270	25	537.700	3	133	121.640
R221	18	234.280	3	131	190.330	R271	26	034.330	3	133	139.860
R222	18	291.080	3	131	205.950	R272	26	509.120	3	133	157.320
R223	18	367.700	3	131	222.360	R273	26	536.290	3	133	158.320
R223X	18	372.970	3	131	223.220	R274	26	726.470	3	133	166.060
R224	18	465.350	3	131	234.760	R275	27	019.320	3	133	175.870
R225	18	543.900	3	131	238.770	R276	27	153.670	3	133	173.390
R226	18	663.060	3	131	236.460	R277	27	327.200	3	133	187.540
R227	19	068.600	3	131	223.900	R278	27	347.600	3	133	186.090
R228	19	202.060	3	131	217.390	R279	27	439.840	3	133	179.520
R229	19	284.130	3	131	219.710	R280	27	547.590	3	133	156.160
R230	19	380.180	3	131	228.490	R281	27	646.820	3	133	120.610
R231	19	504.430	3	131	255.900	R282	27	676.820	3	133	109.860
R232	19	611.570	3	131	294.760	R283	27	810.600	3	133	029.730
R233	19	693.510	3	131	335.560	R284	27	926.950	3	132	933.800
R234	19	785.830	3	131	387.930	R285	28	135.220	3	132	714.880
R235	19	801.160	3	131	396.620	R286	28	214.270	3	132	634.810
R236	20	159.120	3	131	600.250	R287	28	318.300	3	132	527.410
R237	20	159.710	3	131	600.580	R288	28	491.700	3	132	340.450
R238	20	528.020	3	131	810.350						
R239	20	996.700	3	132	077.160						
R240	21	404.660	3	132	309.530						
R241	21	673.330	3	132	457.190						
R242	21	805.420	3	132	537.620						
R243	21	892.120	3	132	586.840						
R244	21	998.360	3	132	640.320						
R245	22	074.710	3	132	685.230						
R246	22	235.550	3	132	757.160						
R247	22	263.530	3	132	770.120						
R248	22	331.260	3	132	801.480						
R249	22	411.040	3	132	839.710						

Printed by and obtainable from the Government Printer, Bosman Street, Private Bag X85, Pretoria, 0001
Publications: Tel: (012) 334-4508, 334-4509, 334-4510
Advertisements: Tel: (012) 334-4673, 334-4674, 334-4504
Subscriptions: Tel: (012) 334-4735, 334-4736, 334-4737
Cape Town Branch: Tel: (021) 465-7531

Gedruk deur en verkrygbaar by die Staatsdrukker, Bosmanstraat, Privaatsak X85, Pretoria, 0001
Publikasies: Tel: (012) 334-4508, 334-4509, 334-4510
Advertensies: Tel: (012) 334-4673, 334-4674, 334-4504
Subskripsies: Tel: (012) 334-4735, 334-4736, 334-4737
Kaapstad-tak: Tel: (021) 465-7531