

IMPORTANT NOTICE

The Government Printing Works will not be held responsible for faxed documents not received due to errors on the fax machine or faxes received which are unclear or incomplete. Please be advised that an "OK" slip, received from a fax machine, will not be accepted as proof that documents were received by the GPW for printing. If documents are faxed to the GPW it will be the sender's responsibility to phone and confirm that the documents were received in good order.

Furthermore the Government Printing Works will also not be held responsible for cancellations and amendments which have not been done on original documents received from clients.

CONTENTS**INHOUD**

<i>No.</i>	<i>Page No.</i>	<i>Gazette No.</i>	<i>No.</i>	<i>Bladsy No.</i>	<i>Koerant No.</i>
GOVERNMENT NOTICE			GOEWERMENTSKENNISGEWING		
Transport, Department of			Vervoer, Departement van		
<i>Government Notice</i>			<i>Goewermentskennisgewing</i>		
914			914		
South African National Roads Agency Limited and the National Roads Act (7/1998): The South African National Roads Agency Limited: Declaration amendment of National Road R33 Section 5: Amendment of Declaration No. 174 of 2007	3	33640	Suid-Afrikaanse Nasionale Padagentskap Beperk en die Nasionale Paaie Wet (7/1998): Die Suid-Afrikaanse Nasionale Padagentskap Beperk: Verklaring wysiging van Nasionale Pad R33 Seksie 5: Wysiging van Verklaring No. 174 van 2007	4	33640

GOVERNMENT NOTICE

DEPARTMENT OF TRANSPORT

No. 914

22 October 2010

THE SOUTH AFRICAN NATIONAL ROADS AGENCY LIMITED

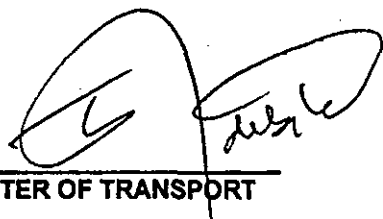
Registration No: 98/09584/06

DECLARATION AMENDMENT OF NATIONAL ROAD R33 SECTION 5

AMENDMENT OF DECLARATION No. 174 OF 2007

By virtue of section 40(1)(b) of the South African National Roads Agency Limited and the National Roads Act, 1998 (Act No. 7 of 1998), I hereby amend Declaration No. 174 of 2007 by substituting Annexure paragraphs (VIII) and (IX) the section of the descriptive declaration of the route from the KwaZulu-Natal/Mpumalanga provincial border up to Piet Retief, with the subjoined sheets 1 to 9 of Plan No. P747/09.

(National Road R33 Section 5: KwaZulu-Natal/Mpumalanga Provincial Border -- Piet Retief)



MINISTER OF TRANSPORT

GOEWERMENTSKENNISGEWING

DEPARTEMENT VAN VERVOER

No. 914

22 Oktober 2010

**DIE SUID-AFRIKAANSE NASIONALE
PADAGENTSKAP BEPERK**

Registrasie No: 98/09584/06

VERKLARING WYSIGING VAN NASIONALE PAD R33 SEKSIE 5.

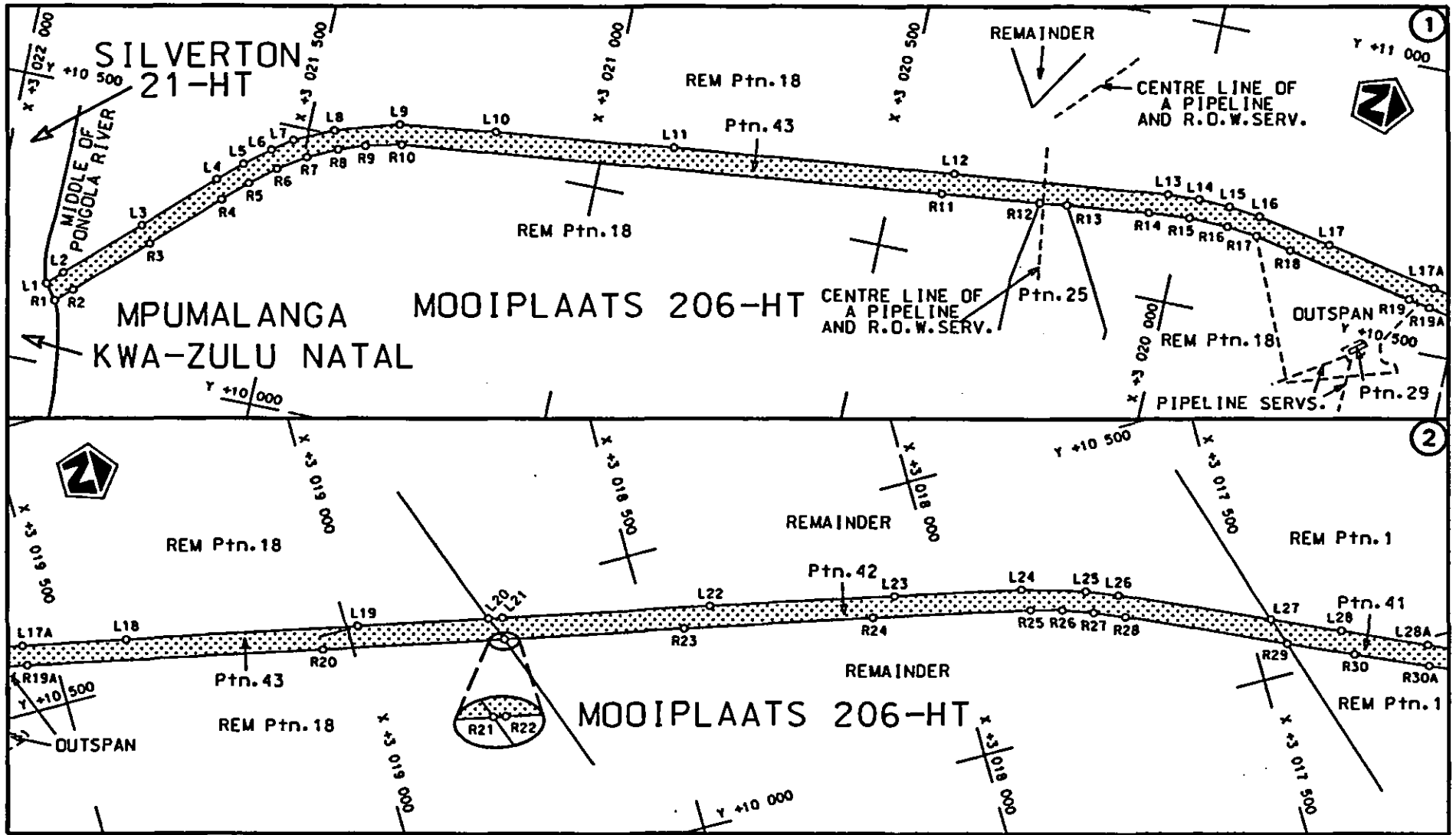
WYSIGING VAN VERKLARING NO. 174 VAN 2007.

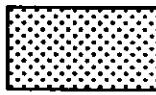
Kragtens Artikel 40(1)(b) van die Suid-Afrikaanse Nasionale Padagentskap Beperk en die Nasionale Paaie Wet, 1998 (Wet no.7 van 1998), wysig ek hiermee Verklaring no. 174 van 2007 deur Bylae paragrawe (VIII) en (IX) die gedeelte van die beskrywende verklaring van die roete vanaf die KwaZulu-Natal/Mpumalanga provinsiale grens tot by Piet Retief, te vervang met meegaande velle 1 tot 9 van Plan no. P747/09.

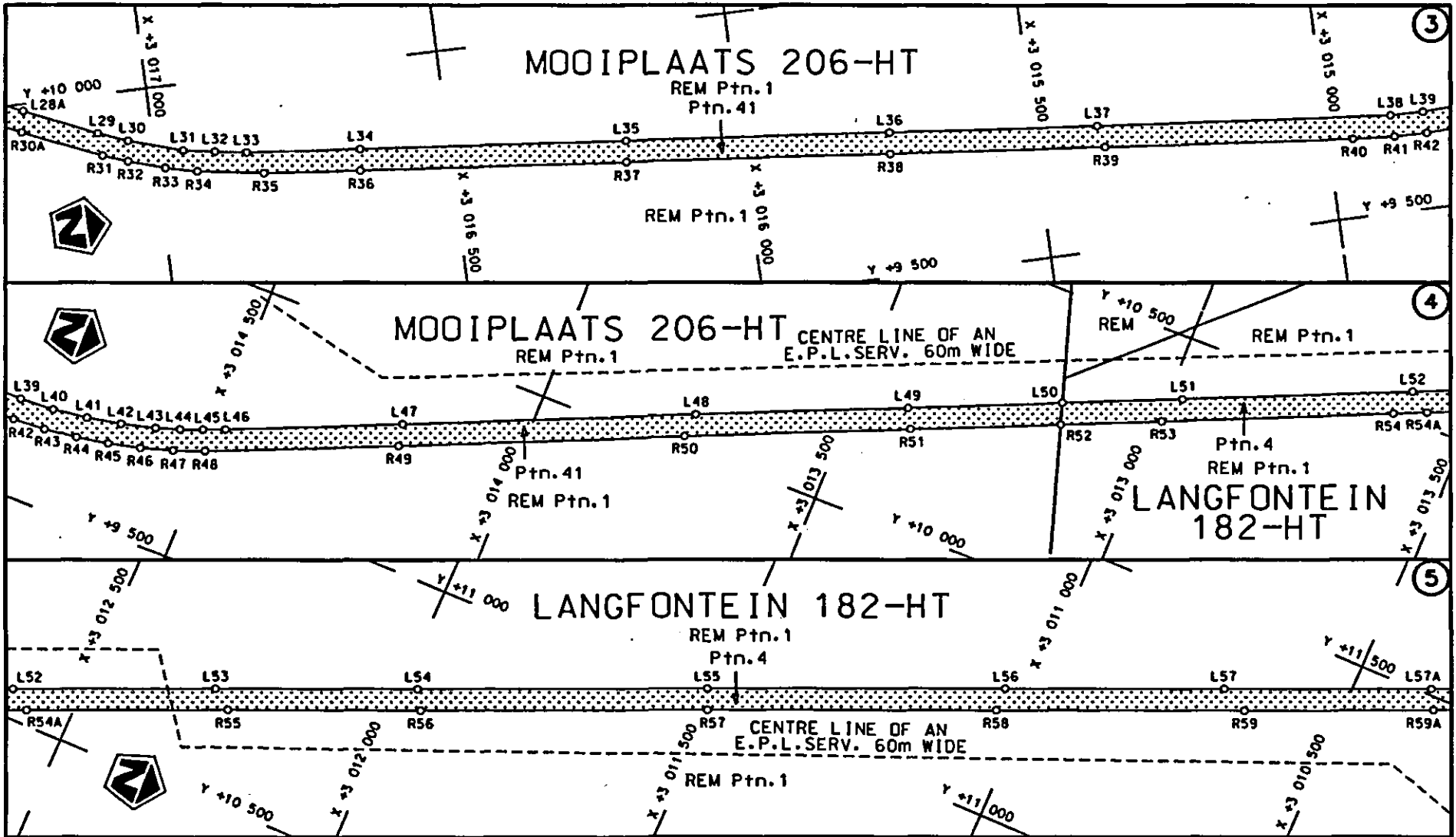
(Nasionale Pad R33 Seksie 5: KwaZulu-Natal/Mpumalanga Provinsiale Grens – Piet Retief)




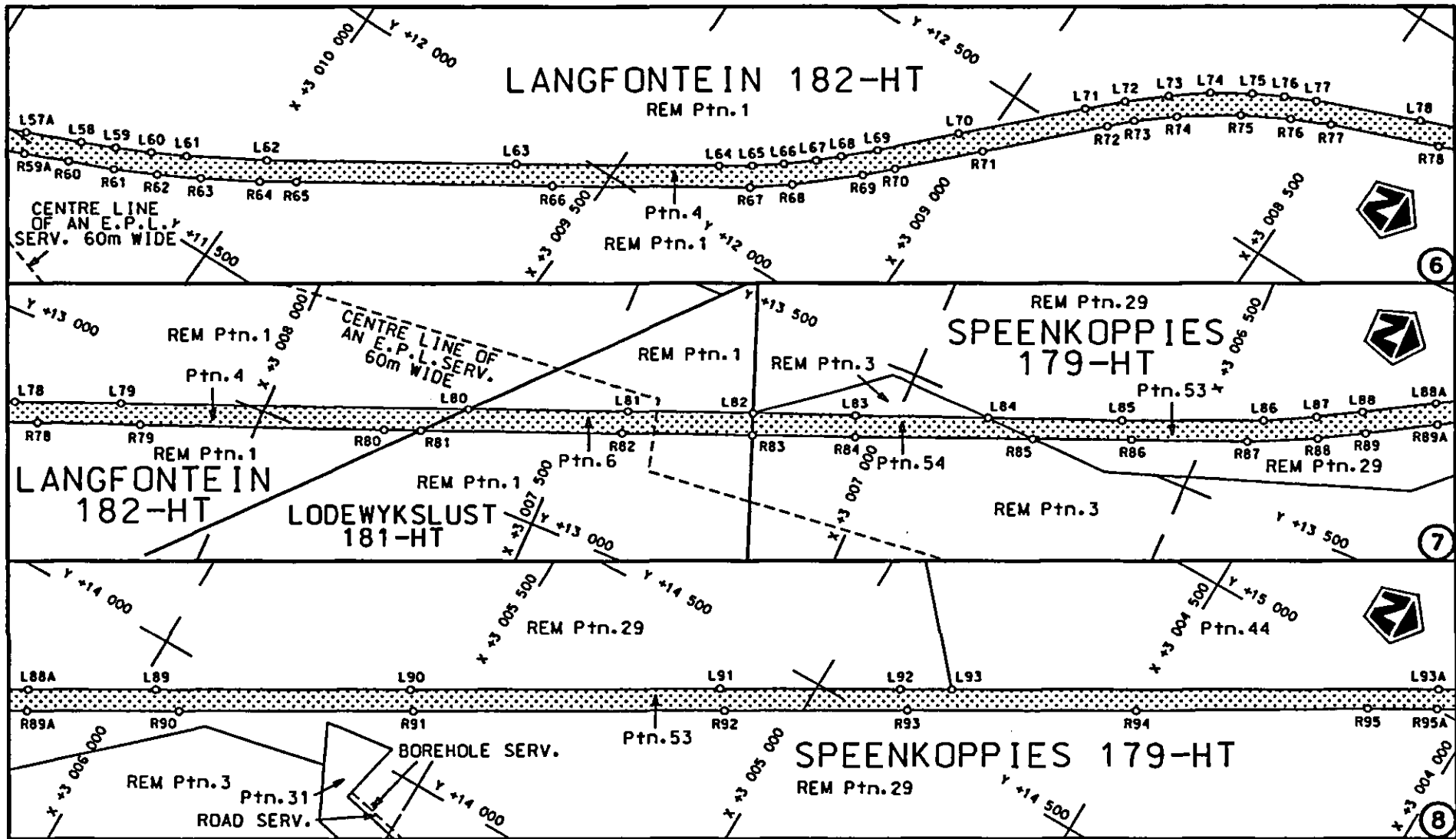
MINISTER VAN VERVOER

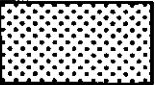


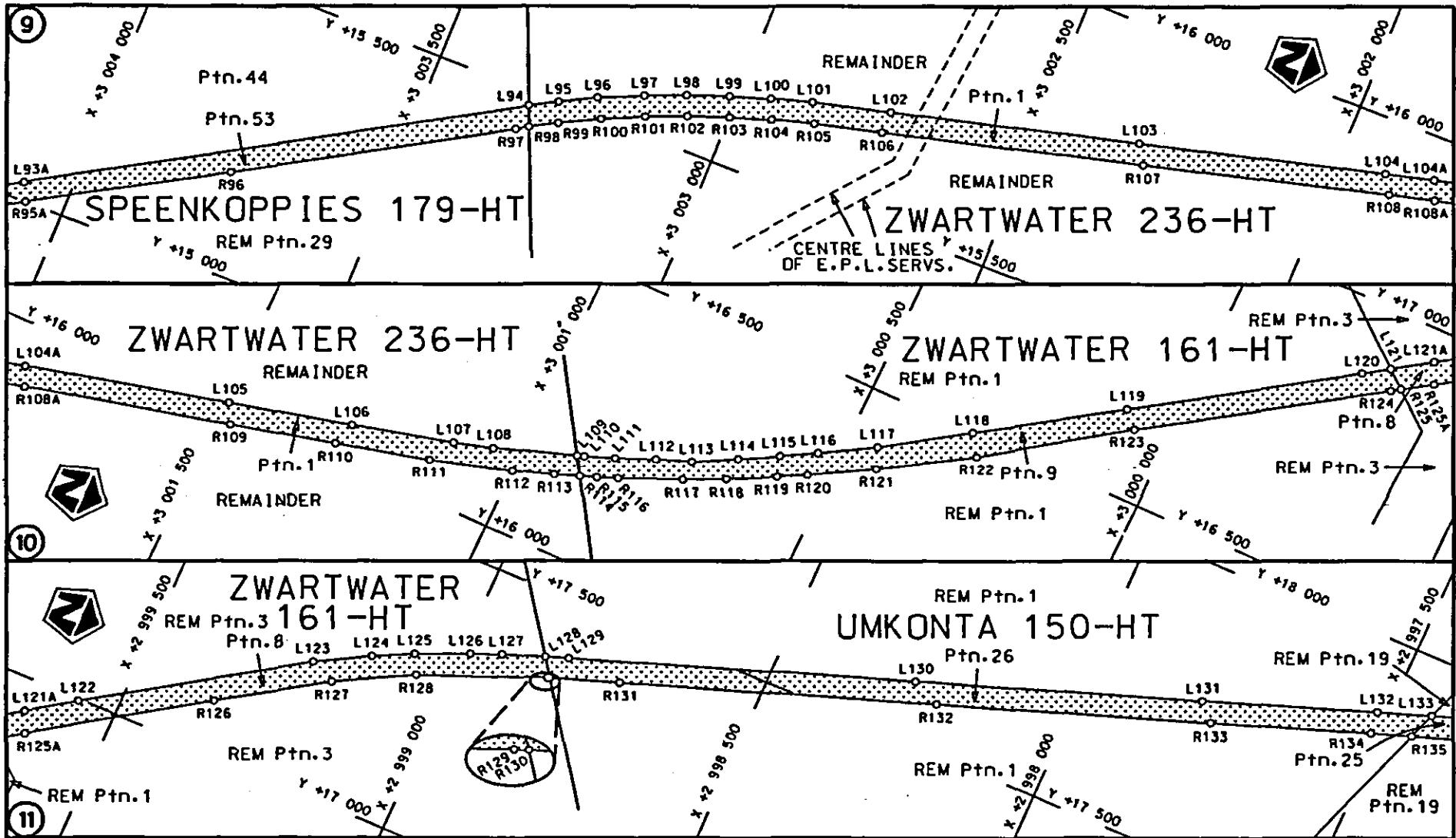
Die Suid Afrikaanse Nasionale Padagentskap Beperk The South African National Roads Agency Limited	Die figuur getoon The figure shown		steldie padreserwe voor van 'n gedeelte represents the road reserve of a portion van Nasionale Roete of National Route	Vel Sheet 1 of 9 Plan P747/09
			R33 Seksie 5	

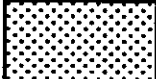


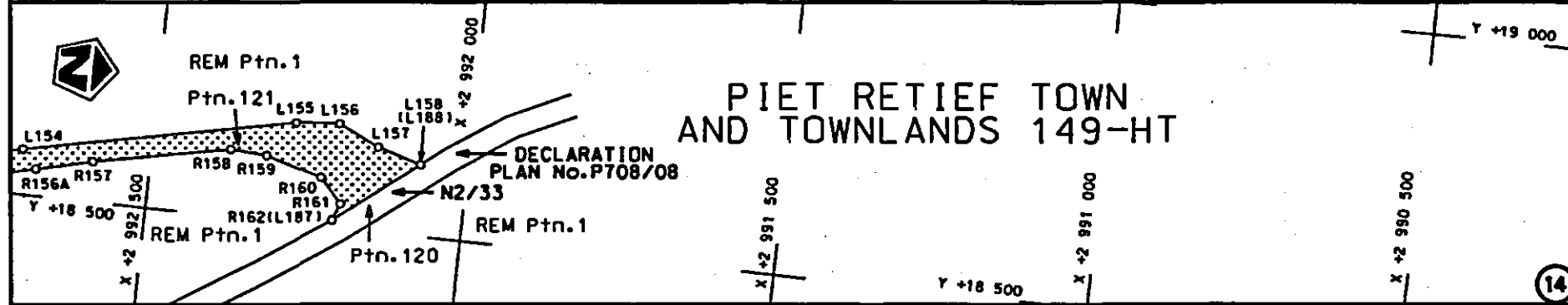
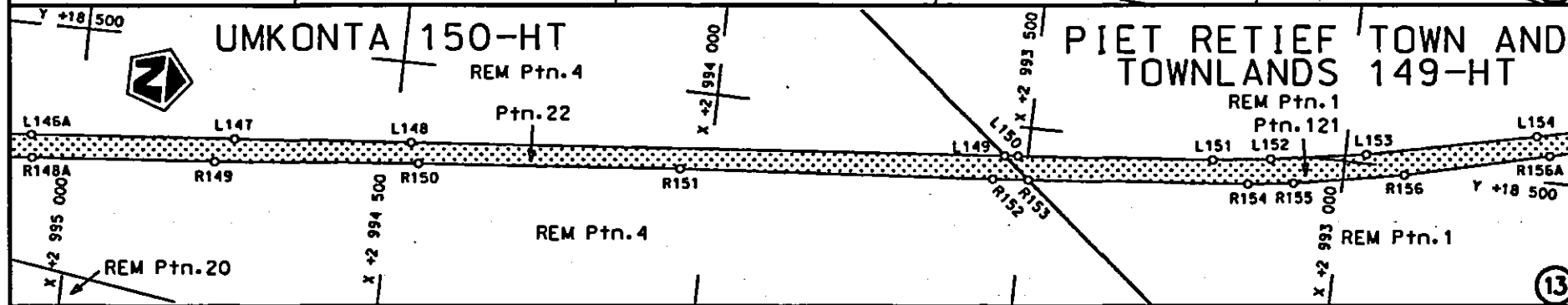
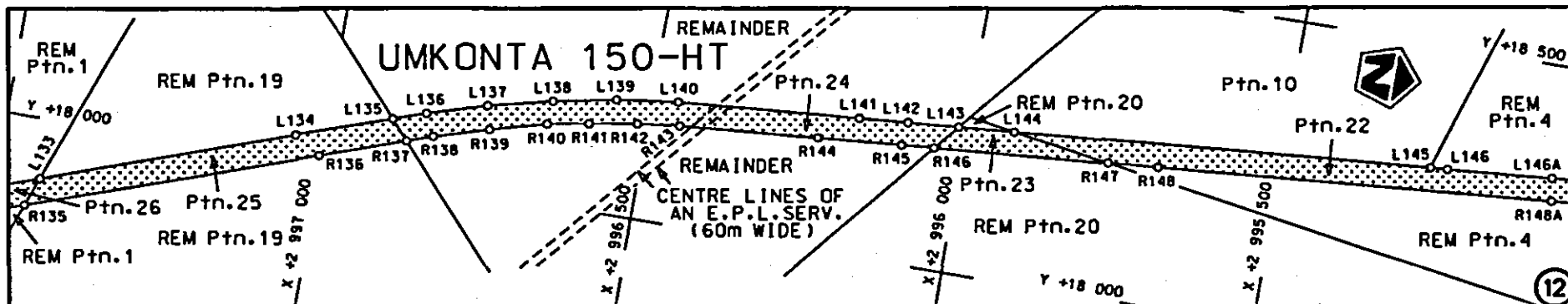
<p>Die Suid Afrikaanse Nasionale Padogenskap Beperk The South African National Roads Agency Limited</p>	<p>Die figuur getoon The figure shown</p>		<p>steldie padreserwe voor van 'n gedeelte represents the road reserve of a portion van Nasionale Roete R33 Seksie of National Route R33 Section</p>	<p>Vel Sheet 2 van 9 of</p>
			<p>5</p>	<p>Plan P747/09</p>

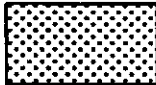


<p>Die Suid Afrikaanse Nasionale Padagentskap Beperk The South African National Roads Agency Limited</p>	<p>Die figuur getoon The figure shown</p>	<p></p> <p>steldie podreserwe voor van 'n gedeelte represents the road reserve of a portion van Nasionale Roete R33 Sektie 5 of National Route R33 Section 5</p>	<p>Vel Sheet 3 van 9 of of Plan P747/09</p>
--	---	--	---



<p>Die Suid Afrikaanse Nasionale Padagentskap Beperk The South African National Roads Agency Limited</p>	<p>Die figuur getoon The figure shown</p>		<p>Vel Sheet 4 van of 9</p>
<p>steldie padreserwe voor van 'n gedeelte represents the road reserve of a portion van Nasionale Roete R33 Seksie Section of National Route 5</p>			<p>Plan P747/09</p>



<p>Die Suid Afrikaanse Nasionale Padagentskap Beperk The South African National Roads Agency Limited</p>	<p>Die figuur getoon The figure shown</p> 	<p>steldie padreserwe voor van 'n gedeelte represents the road reserve of a portion van Nasionale Roete R33 Sektie 5 of National Route R33 Section 5</p>	<p>Vol Sheet 5 van 9 Plan P747/09</p>
--	--	--	---

PADRESERWE KOÖRDINATE				/ ROAD RESERVE CO-ORDINATES			
LINKERKANT/LEFT HAND SIDE				REGTERKANT/RIGHT HAND SIDE			
	Y	X	WG 31°		Y	X	
L1	10 141.731	3 021	888.266	R1	10 115.035	3 021	868.493
L2	10 166.220	3 021	863.680	R2	10 139.500	3 021	840.950
L3	10 276.200	3 021	747.860	R3	10 247.030	3 021	728.000
L4	10 380.720	3 021	637.490	R4	10 347.550	3 021	621.950
L5	10 417.400	3 021	598.490	R5	10 385.260	3 021	582.250
L6	10 451.620	3 021	556.660	R6	10 420.680	3 021	540.180
L7	10 476.370	3 021	522.860	R7	10 451.400	3 021	494.400
L8	10 507.730	3 021	457.050	R8	10 475.840	3 021	445.580
L9	10 540.470	3 021	348.860	R9	10 491.440	3 021	400.820
L10	10 560.880	3 021	185.220	R10	10 506.120	3 021	339.740
L11	10 595.560	3 020	880.100	R11	10 609.860	3 020	411.740
L12	10 649.590	3 020	397.930	R12	10 628.550	3 020	243.790
L13	10 687.690	3 020	031.220	R13	10 634.090	3 020	197.080
L14	10 689.250	3 019	976.290	R14	10 649.490	3 020	057.240
L15	10 687.570	3 019	921.630	R15	10 654.960	3 019	986.780
L16	10 681.810	3 019	867.270	R16	10 652.560	3 019	918.720
L17	10 657.020	3 019	739.380	R17	10 646.710	3 019	865.280
L18	10 582.190	3 019	372.170	R18	10 633.710	3 019	803.230
L19	10 500.790	3 018	982.040	R19	10 590.340	3 019	585.680
L20	10 454.440	3 018	760.160	R20	10 476.170	3 019	050.310
L21	10 449.570	3 018	736.840	R21	10 412.870	3 018	745.300
L22	10 376.510	3 018	385.500	R22	10 412.750	3 018	744.730
L23	10 311.710	3 018	074.940	R23	10 349.840	3 018	441.120
L24	10 266.340	3 017	860.980	R24	10 283.020	3 018	120.990
L25	10 234.210	3 017	755.220	R25	10 226.110	3 017	855.480
L26	10 212.910	3 017	702.930	R26	10 211.260	3 017	803.260
L27	10 100.780	3 017	459.790	R27	10 192.810	3 017	752.260
L28	10 049.640	3 017	348.890	R28	10 171.430	3 017	701.590
L29	9 931.590	3 017	091.590	R29	10 052.890	3 017	445.190
L30	9 911.970	3 017	042.170	R30	10 003.310	3 017	337.970
L31	9 882.850	3 016	951.010	R31	9 891.580	3 017	088.730
L32	9 873.110	3 016	897.400	R32	9 876.040	3 017	047.160
L33	9 864.970	3 016	843.970	R33	9 856.390	3 016	985.490
L34	9 845.410	3 016	651.260	R34	9 843.250	3 016	931.940
L35	9 800.000	3 016	196.640	R35	9 825.040	3 016	819.180
L36	9 755.300	3 015	747.010	R36	9 808.070	3 016	656.150
L37	9 719.560	3 015	390.550	R37	9 762.660	3 016	200.970
L38	9 671.600	3 014	887.670	R38	9 717.680	3 015	750.780
L39	9 670.670	3 014	831.670	R39	9 680.780	3 015	381.810
L40	9 674.030	3 014	772.610	R40	9 638.750	3 014	957.680
L41	9 680.960	3 014	713.570	R41	9 633.450	3 014	885.610
L42	9 692.030	3 014	655.630	R42	9 632.840	3 014	830.210
L43	9 706.510	3 014	598.330	R43	9 635.950	3 014	774.210
L44	9 719.530	3 014	558.490	R44	9 642.200	3 014	718.020
L45	9 733.010	3 014	521.750	R45	9 651.700	3 014	663.830
L46	9 747.280	3 014	485.840	R46	9 664.280	3 014	609.780
L47	9 866.450	3 014	207.760	R47	9 680.230	3 014	556.340
L48	10 064.960	3 013	745.180	R48	9 698.680	3 014	504.580
L49	10 208.160	3 013	410.010	R49	9 827.710	3 014	200.490
L50	10 313.850	3 013	165.380	R50	10 021.810	3 013	749.200
L51	10 395.200	3 012	975.270	R51	10 174.720	3 013	392.620

Vel	6	Van	9	P747/09
Sheet		of		

PADRESERWE KOÖRDINATE				/	ROAD RESERVE CO-ORDINATES			
LINKERKANT/LEFT HAND SIDE					REGTERKANT/RIGHT HAND SIDE			
	Y	X	WG	31°	Y	X		
L52	10 550.840	3 012	611.020	R52	10 276.910	3 013	154.090	
L53	10 687.350	3 012	292.600	R53	10 345.500	3 012	994.010	
L54	10 823.300	3 011	976.040	R54	10 502.640	3 012	627.750	
L55	11 020.020	3 011	518.650	R55	10 661.240	3 012	258.790	
L56	11 222.490	3 011	049.290	R56	10 790.230	3 011	956.620	
L57	11 370.500	3 010	702.250	R57	10 984.910	3 011	503.870	
L58	11 548.340	3 010	286.350	R58	11 181.000	3 011	048.530	
L59	11 573.240	3 010	231.760	R59	11 348.280	3 010	655.820	
L60	11 600.520	3 010	176.740	R60	11 508.450	3 010	286.460	
L61	11 628.410	3 010	123.210	R61	11 539.800	3 010	213.780	
L62	11 697.920	3 010	005.070	R62	11 573.230	3 010	147.140	
L63	11 928.780	3 009	645.950	R63	11 608.470	3 010	080.840	
L64	12 117.350	3 009	352.870	R64	11 659.630	3 009	994.060	
L65	12 148.960	3 009	308.310	R65	11 693.930	3 009	942.100	
L66	12 181.520	3 009	264.750	R66	11 930.630	3 009	572.920	
L67	12 217.040	3 009	222.300	R67	12 115.000	3 009	290.000	
L68	12 247.280	3 009	190.570	R68	12 159.080	3 009	232.040	
L69	12 291.230	3 009	144.000	R69	12 239.930	3 009	141.020	
L70	12 392.590	3 009	043.510	R70	12 280.060	3 009	100.890	
L71	12 549.070	3 008	887.720	R71	12 389.590	3 008	992.190	
L72	12 597.510	3 008	838.990	R72	12 543.690	3 008	839.270	
L73	12 646.560	3 008	782.540	R73	12 577.100	3 008	806.730	
L74	12 690.740	3 008	725.490	R74	12 623.940	3 008	750.180	
L75	12 729.600	3 008	664.530	R75	12 686.600	3 008	659.830	
L76	12 755.740	3 008	615.820	R76	12 728.230	3 008	584.880	
L77	12 779.350	3 008	566.440	R77	12 757.470	3 008	521.640	
L78	12 848.510	3 008	398.310	R78	12 828.590	3 008	346.850	
L79	12 918.020	3 008	229.020	R79	12 895.250	3 008	183.710	
L80	13 143.460	3 007	678.220	R80	13 052.450	3 007	796.160	
L81	13 246.160	3 007	427.250	R81	13 076.360	3 007	738.180	
L82	13 327.370	3 007	228.890	R82	13 207.030	3 007	421.330	
L83	13 393.290	3 007	066.080	R83	13 291.650	3 007	215.040	
L84	13 479.470	3 006	855.470	R84	13 358.530	3 007	051.980	
L85	13 566.360	3 006	643.130	R85	13 476.540	3 006	769.970	
L86	13 661.980	3 006	420.270	R86	13 541.390	3 006	614.980	
L87	13 703.620	3 006	339.770	R87	13 616.420	3 006	431.510	
L88	13 742.220	3 006	270.210	R88	13 669.260	3 006	323.170	
L89	13 917.880	3 005	972.320	R89	13 709.870	3 006	251.030	
L90	14 139.610	3 005	596.030	R90	13 905.330	3 005	919.060	
L91	14 408.500	3 005	141.190	R91	14 109.160	3 005	573.270	
L92	14 564.670	3 004	874.770	R92	14 378.740	3 005	115.200	
L93	14 609.140	3 004	797.840	R93	14 538.510	3 004	845.900	
L94	15 476.350	3 003	326.640	R94	14 736.500	3 004	508.260	
L95	15 501.490	3 003	281.220	R95	14 941.080	3 004	168.330	
L96	15 533.210	3 003	222.060	R96	15 178.490	3 003	758.370	
L97	15 565.490	3 003	149.330	R97	15 429.480	3 003	331.980	
L98	15 593.310	3 003	082.640	R98	15 440.890	3 003	311.880	
L99	15 618.960	3 003	013.420	R99	15 465.950	3 003	267.710	
L100	15 640.830	3 002	945.730	R100	15 499.820	3 003	202.180	
L101	15 660.750	3 002	876.470	R101	15 531.280	3 003	133.960	
L102	15 694.060	3 002	746.240	R102	15 558.840	3 003	067.620	

Vel 7 Van 9
Sheet of

P747/09

PADRESERWE KOÖRDINATE				/ ROAD RESERVE CO-ORDINATES		
LINKERKANT/LEFT HAND SIDE				REGTERKANT/RIGHT HAND SIDE		
	Y	X	WG 31°		Y	X
L103	15 800.710	3 002	327.400	R103	15 584.020	3 002 999.480
L104	15 905.720	3 001	916.060	R104	15 606.250	3 002 930.520
L105	16 013.920	3 001	490.840	R105	15 626.240	3 002 859.360
L106	16 066.850	3 001	283.350	R106	15 655.100	3 002 746.520
L107	16 111.620	3 001	111.960	R107	15 767.710	3 002 307.730
L108	16 131.830	3 001	045.480	R108	15 873.920	3 001 896.620
L109	16 179.570	3 000	908.880	R109	15 980.400	3 001 472.790
L110	16 183.690	3 000	897.090	R110	16 025.460	3 001 295.490
L111	16 202.910	3 000	848.050	R111	16 066.690	3 001 136.340
L112	16 229.840	3 000	784.210	R112	16 108.200	3 000 997.960
L113	16 251.570	3 000	726.620	R113	16 132.020	3 000 929.700
L114	16 289.970	3 000	656.250	R114	16 147.560	3 000 888.580
L115	16 323.960	3 000	593.070	R115	16 157.980	3 000 861.000
L116	16 356.070	3 000	535.990	R116	16 171.640	3 000 827.750
L117	16 408.360	3 000	448.360	R117	16 215.480	3 000 726.940
L118	16 500.320	3 000	310.590	R118	16 248.240	3 000 658.960
L119	16 649.000	3 000	086.280	R119	16 287.940	3 000 581.470
L120	16 874.240	2 999	747.670	R120	16 312.180	3 000 535.420
L121	16 902.270	2 999	706.100	R121	16 371.950	3 000 433.770
L122	16 996.400	2 999	566.570	R122	16 464.540	3 000 286.570
L123	17 221.540	2 999	226.610	R123	16 621.970	3 000 060.190
L124	17 270.820	2 999	138.580	R124	16 867.000	2 999 689.810
L125	17 303.910	2 999	073.190	R125	16 876.870	2 999 675.040
L126	17 343.410	2 998	985.360	R126	17 091.040	2 999 354.490
L127	17 363.630	2 998	934.430	R127	17 201.960	2 999 183.380
L128	17 389.070	2 998	864.540	R128	17 270.830	2 999 055.360
L129	17 402.930	2 998	826.460	R129	17 356.250	2 998 846.090
L130	17 603.820	2 998	266.400	R130	17 357.690	2 998 842.110
L131	17 769.880	2 997	802.290	R131	17 398.490	2 998 729.310
L132	17 871.690	2 997	518.190	R132	17 581.430	2 998 217.470
L133	17 903.440	2 997	430.810	R133	17 739.880	2 997 773.150
L134	18 043.490	2 997	045.240	R134	17 833.510	2 997 513.210
L135	18 094.520	2 996	898.590	R135	17 857.000	2 997 447.450
L136	18 112.280	2 996	847.520	R136	18 015.620	2 997 003.380
L137	18 141.360	2 996	754.330	R137	18 063.190	2 996 871.100
L138	18 166.260	2 996	653.800	R138	18 077.720	2 996 830.710
L139	18 186.270	2 996	554.940	R139	18 104.040	2 996 745.060
L140	18 199.480	2 996	457.670	R140	18 128.670	2 996 656.840
L141	18 224.220	2 996	170.530	R141	18 140.710	2 996 591.300
L142	18 230.820	2 996	093.110	R142	18 153.560	2 996 515.770
L143	18 237.800	2 996	012.260	R143	18 162.090	2 996 449.200
L144	18 245.370	2 995	924.600	R144	18 181.430	2 996 230.080
L145	18 302.480	2 995	264.800	R145	18 193.060	2 996 096.780
L146	18 304.060	2 995	237.910	R146	18 197.490	2 996 045.050
L147	18 346.140	2 994	752.500	R147	18 221.100	2 995 769.480
L148	18 369.540	2 994	474.380	R148	18 227.890	2 995 690.160
L149	18 451.180	2 993	536.590	R149	18 306.100	2 994 779.770
L150	18 452.990	2 993	515.730	R150	18 337.210	2 994 459.650
L151	18 479.370	2 993	207.900	R151	18 374.010	2 994 046.800
L152	18 490.660	2 993	117.120	R152	18 411.980	2 993 551.650
L153	18 514.050	2 992	966.790	R153	18 416.780	2 993 495.780

Vel	8	Van	9	P747/09
Sheet		of		

PADRESERWE KOÖRDINATE				/	ROAD RESERVE CO-ORDINATES			
LINKERKANT/LEFT HAND SIDE					REGTERKANT/RIGHT HAND SIDE			
	Y	X	WG	31°	Y	X		
L154	18 572.240	2 992 701.150		R154	18 446.630	2 993 148.790		
L155	18 662.420	2 992 277.050		R155	18 455.900	2 993 076.650		
L156	18 667.060	2 992 208.380		R156	18 488.050	2 992 903.690		
L157	18 635.760	2 992 143.730		R157	18 564.440	2 992 589.530		
L158	18 615.390	2 992 074.500		R158	18 607.760	2 992 375.130		
				R159	18 604.310	2 992 317.850		
				R160	18 577.950	2 992 228.740		
				R161	18 539.260	2 992 194.270		
				R162	18 512.000	2 992 204.650		

Vel 9 Van 9
Sheet of

P747/09

Printed by and obtainable from the Government Printer, Bosman Street, Private Bag X85, Pretoria, 0001
Publications: Tel: (012) 334-4508, 334-4509, 334-4510
Advertisements: Tel: (012) 334-4673, 334-4674, 334-4504
Subscriptions: Tel: (012) 334-4735, 334-4736, 334-4737
Cape Town Branch: Tel: (021) 465-7531

Gedruk deur en verkrygbaar by die Staatsdrukker, Bosmanstraat, Privaatsak X85, Pretoria, 0001
Publikasies: Tel: (012) 334-4508, 334-4509, 334-4510
Advertensies: Tel: (012) 334-4673, 334-4674, 334-4504
Subskripsies: Tel: (012) 334-4735, 334-4736, 334-4737
Kaapstad-tak: Tel: (021) 465-7531