

IMPORTANT NOTICE

The Government Printing Works will not be held responsible for faxed documents not received due to errors on the fax machine or faxes received which are unclear or incomplete. Please be advised that an "OK" slip, received from a fax machine, will not be accepted as proof that documents were received by the GPW for printing. If documents are faxed to the GPW it will be the sender's responsibility to phone and confirm that the documents were received in good order.

Furthermore the Government Printing Works will also not be held responsible for cancellations and amendments which have not been done on original documents received from clients.

CONTENTS**INHOUD**

<i>No.</i>	<i>Page No.</i>	<i>Gazette No.</i>	<i>No.</i>	<i>Bladsy No.</i>	<i>Koerant No.</i>
GOVERNMENT NOTICE			GOEWERMENSKENNISGEWING		
Transport, Department of			Vervoer, Departement van		
<i>Government Notice</i>			<i>Goewermentskennisgewing</i>		
917			917		
South African National Roads Agency Limited and the National Roads Act (7/1998): The South African National Roads Agency Limited: Declaration amendment of National Road R37 Section 3: Amendment of Declaration No. 727 of 2005	3	33643	Suid-Afrikaanse Nasionale Padagentskap Beperk en die Nasionale Paaie Wet (7/1998): Die Suid-Afrikaanse Nasionale Padagentskap Beperk: Verklaring wysiging van Nasionale Pad R37 Seksie 3: Wysiging van Verklaring No. 727 van 2005	4	33643

GOVERNMENT NOTICE

DEPARTMENT OF TRANSPORT

No. 917

22 October 2010

THE SOUTH AFRICAN NATIONAL ROADS AGENCY LIMITED

Registration No: 98/09584/06

DECLARATION AMENDMENT OF NATIONAL ROAD R37 SECTION 3

AMENDMENT OF DECLARATION NO. 727 OF 2005.

By virtue of section 40(1)(b) of the South African National Roads Agency Limited and the National Roads Act, 1998 (Act No. 7 of 1998), I hereby amend Declaration No. 727 of 2005 Annexure paragraph (ii), by substituting it, with the subjoined sheets 1 to 16 of Plan No. P761/09.

(National Road R37 Section 3: Lydenburg – Sable Turn Off)



MINISTER OF TRANSPORT

GOEWERMENTSKENNISGEWING

DEPARTEMENT VAN VERVOER

No. 917

22 Oktober 2010

DIE SUID-AFRIKAANSE NASIONALE PADAGENTSKAP BEPERK

Registrasie No: 98/09584/06

VERKLARING WYSIGING VAN NASIONALE PAD R37 SEKSIE 3.

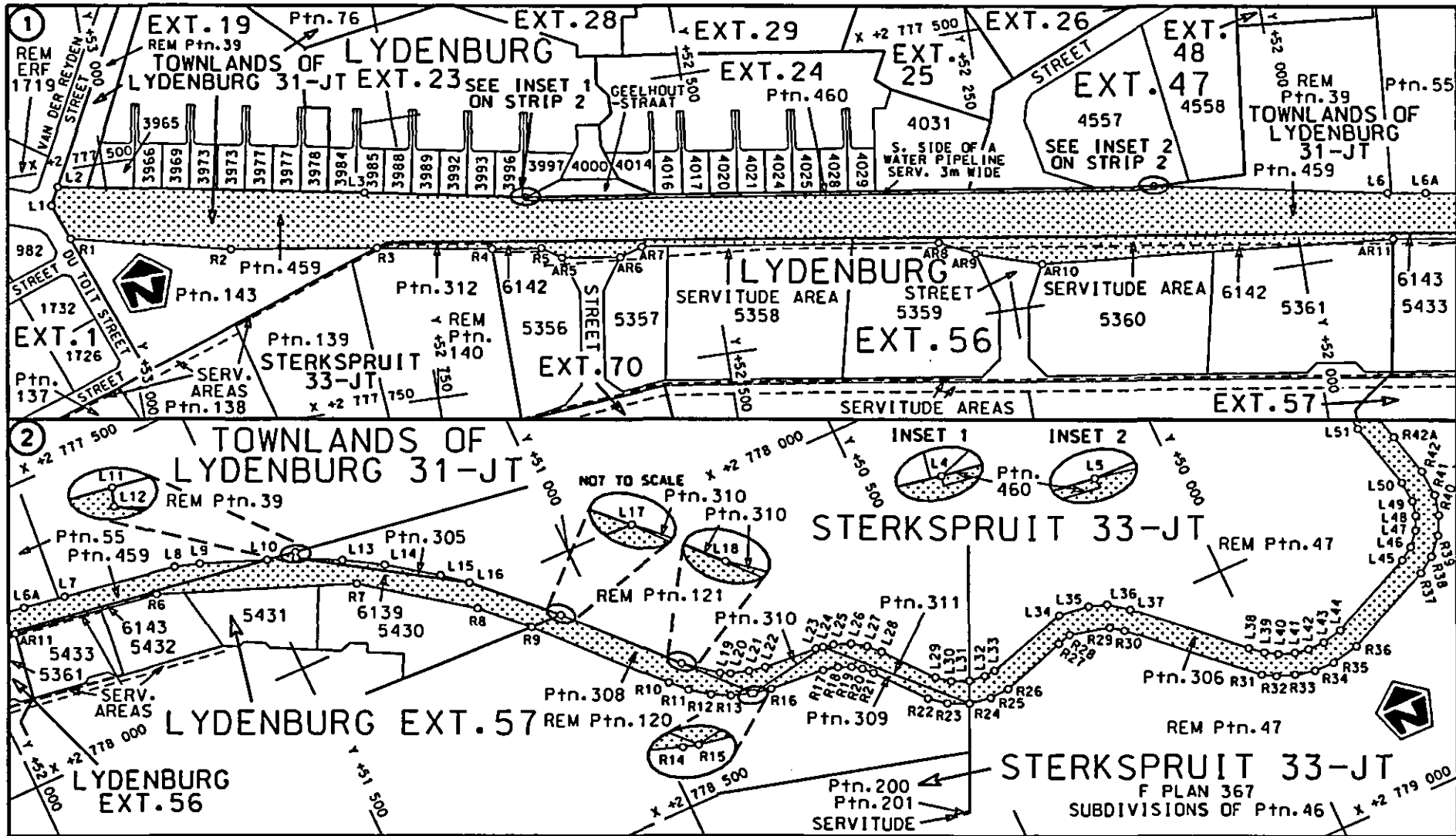
WYSIGING VAN VERKLARING NO. 727 VAN 2005

Kragtens Artikel 40(1)(b) van die Suid-Afrikaanse Nasionale Padagentskap Beperk en die Nasionale Paaie Wet, 1998 (Wet no. 7 van 1998), wysig ek hiermee Verklaring no. 727 van 2005 Bylae paragraaf (ii) deur dit te vervang met meegaande velle 1 tot 16 van Plan no. P761/09.

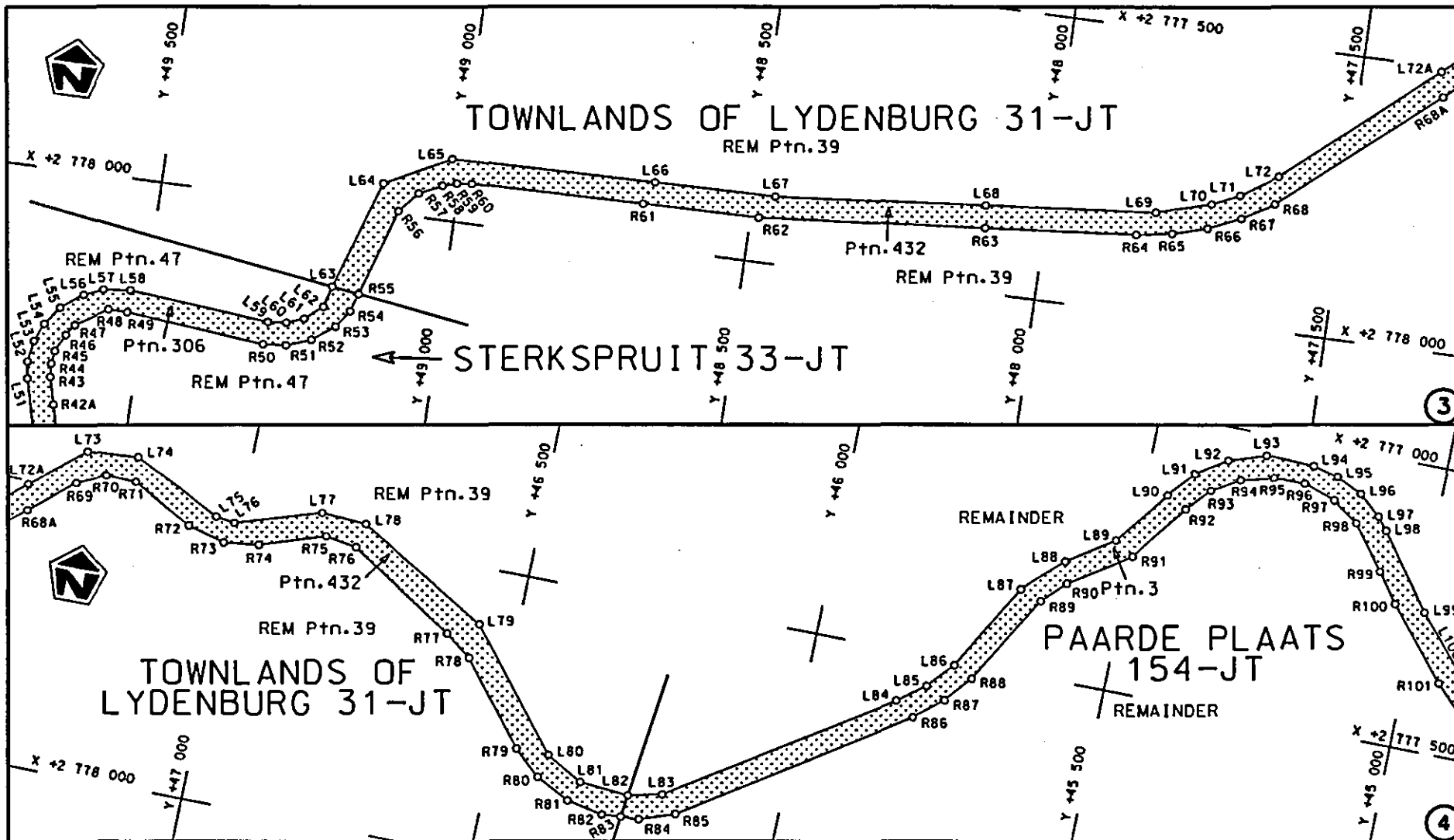
(Nasionale Pad R37 Seksie 3: Lydenburg – Sabie Afdraal)

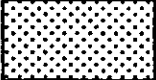


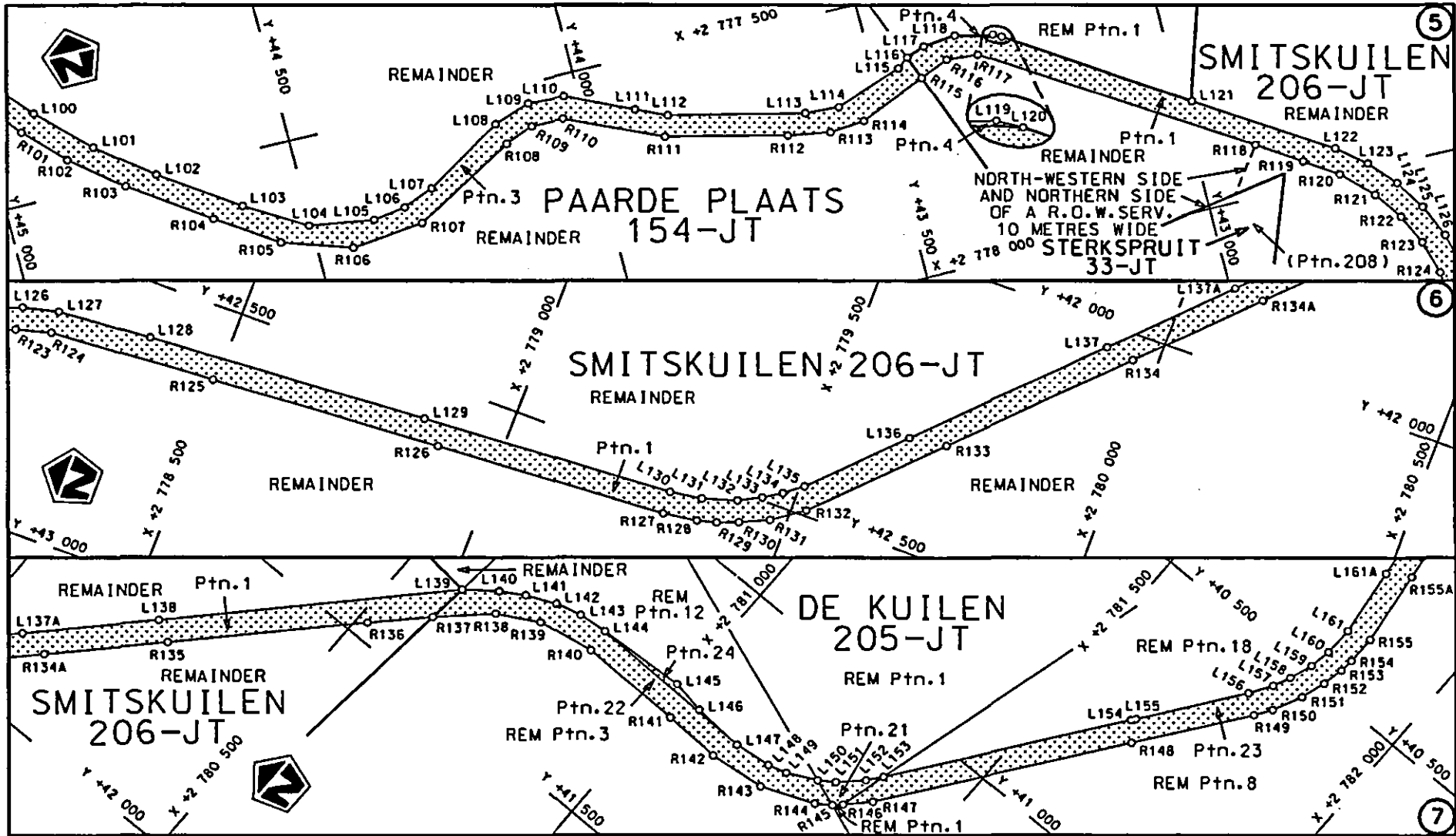
MINISTER VAN VERVOER

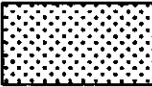


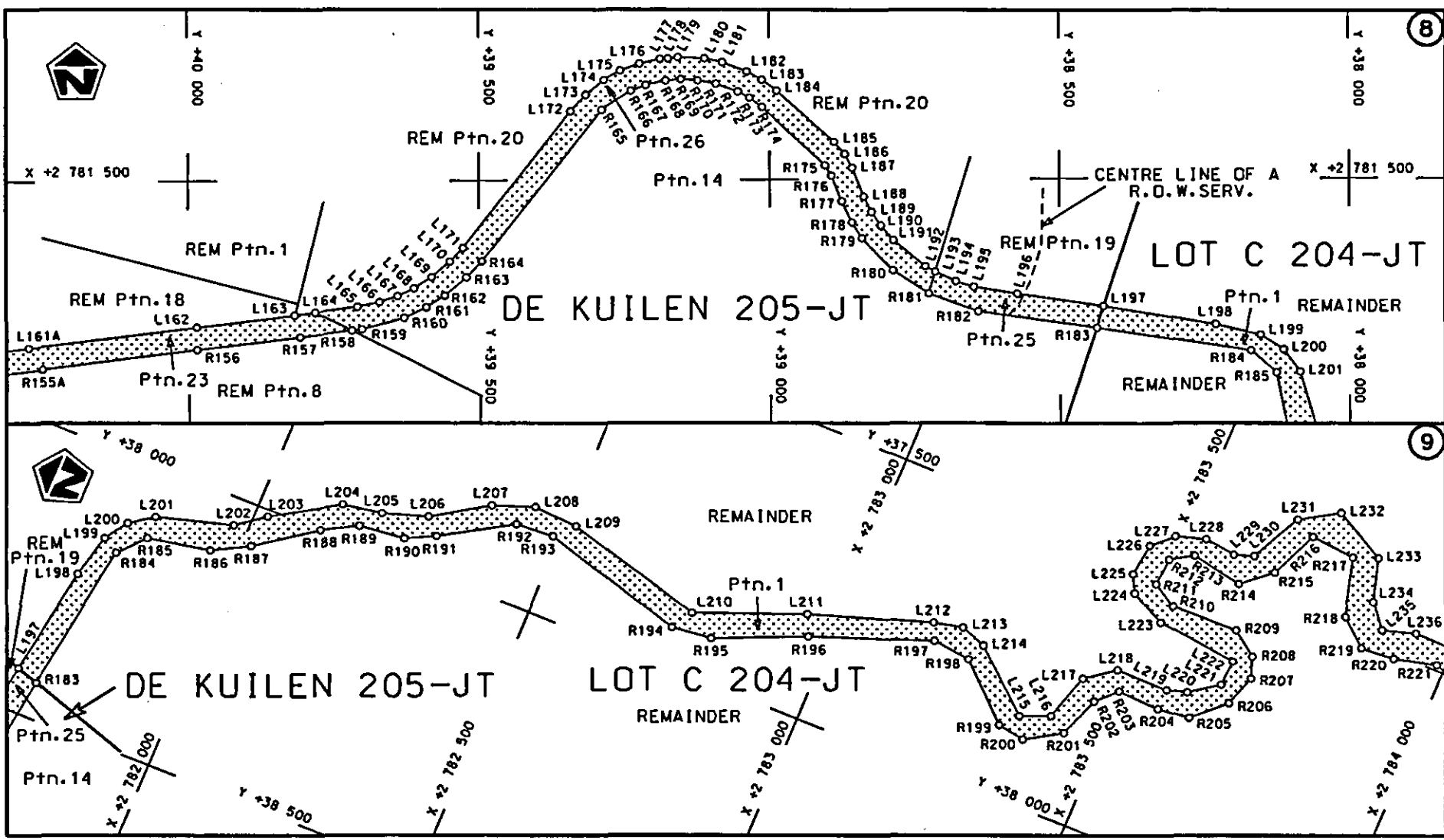
Die Suid Afrikaanse Nasionale Padagentskop Beperk	Die figuur getoon	steldie padreserwe voor van 'n gedeelte	Vel Sheet 1 van 16
The South African National Roads Agency Limited	The figure shown	represents the road reserve of a portion van Nasionale Roete of National Route R37	Seksie Section 3
			Plan P761/09



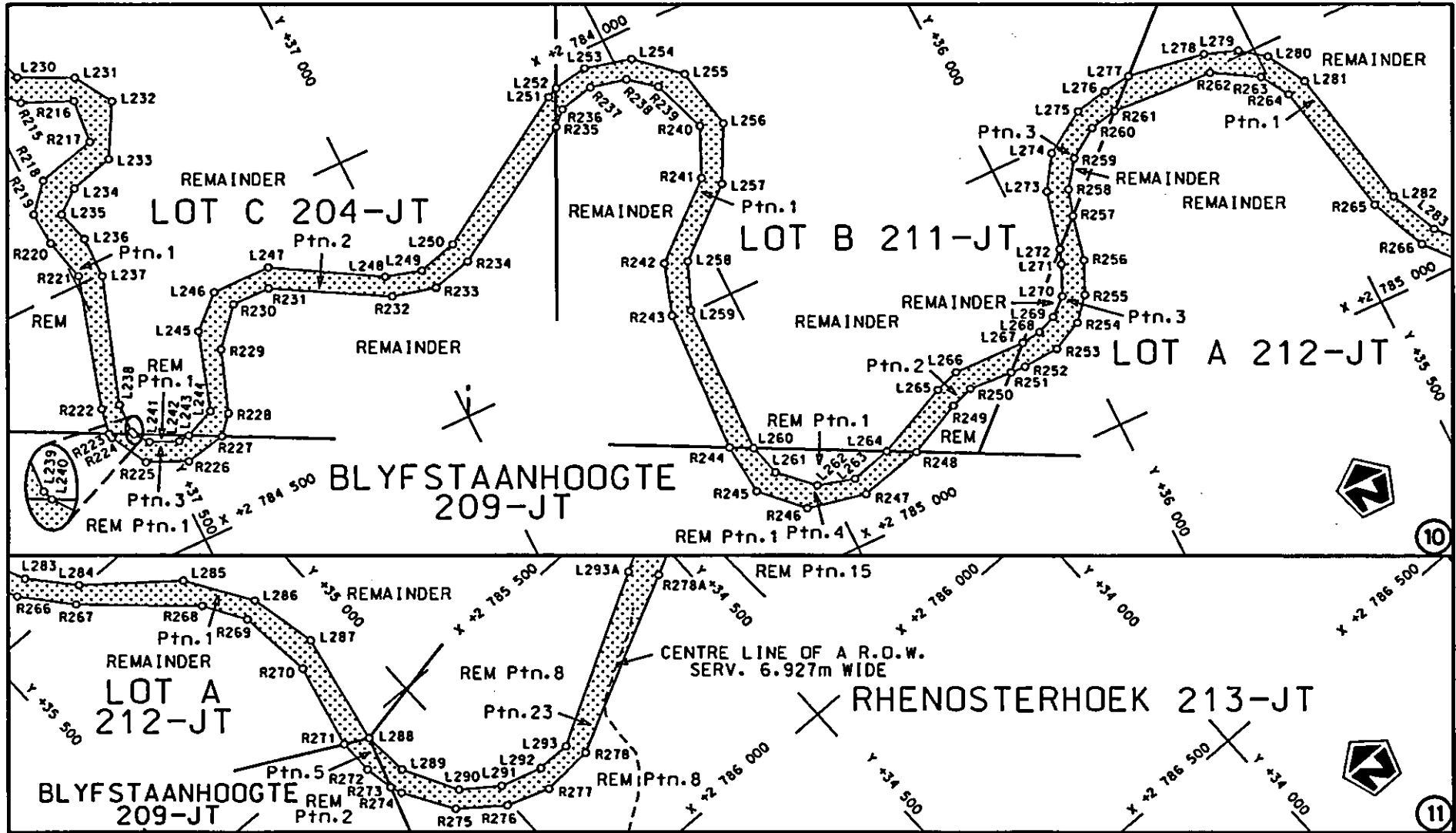
<p>Die Suid Afrikaanse Nasionale Padogenskap Beperk The South African National Roads Agency Limited</p>	<p>Die figuur getoon The figure shown</p>		<p>Vel Sheet 2 van 16</p>
<p>steldie padreserwe voor van 'n gedeelte represents the road reserve of a portion van Nasionale Roete R37 Seksie Section 3</p>			<p>Plan P761/09</p>

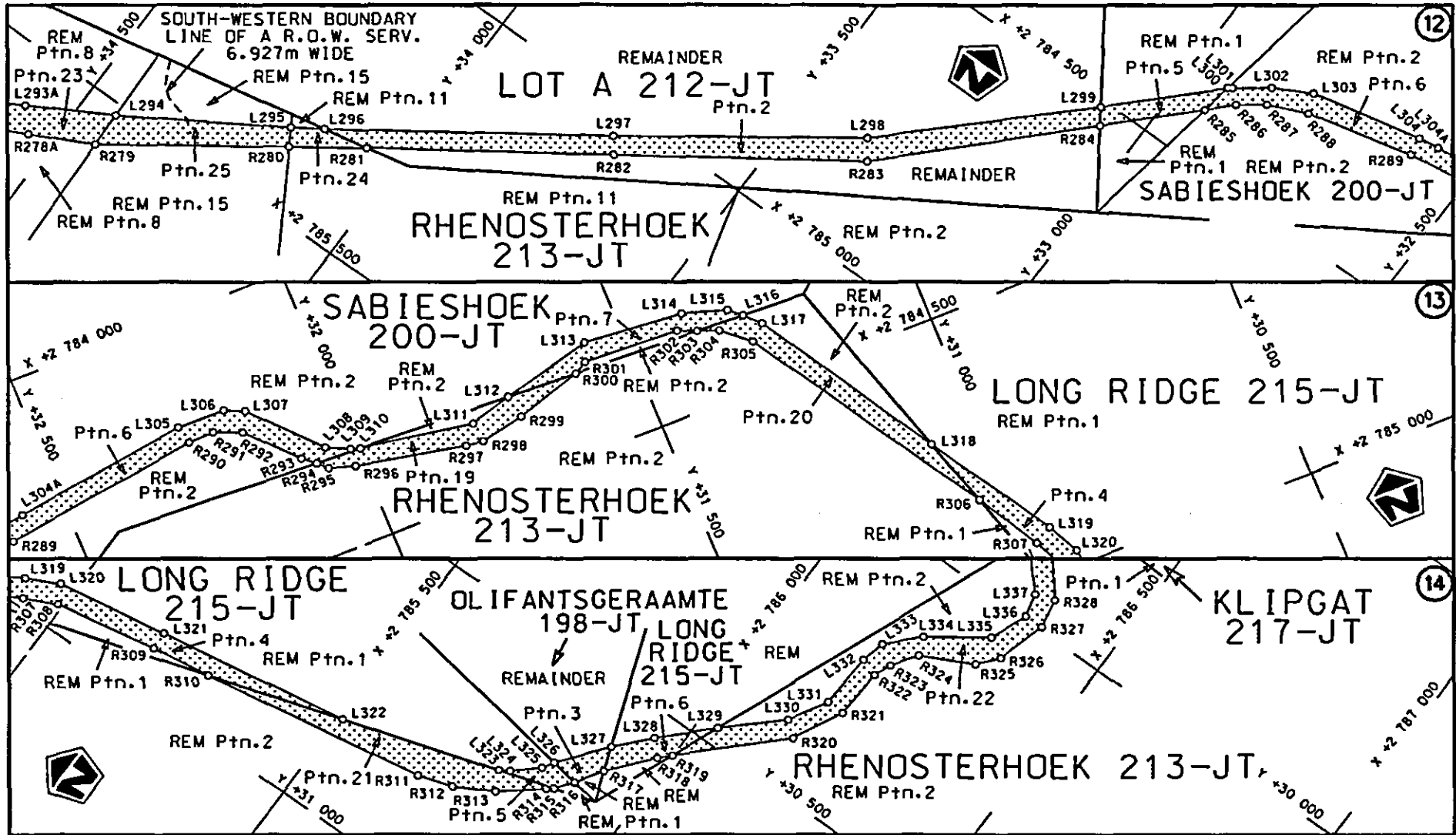


Die Suid Afrikaanse Nasionale Padagentskap Beperk The South African National Roads Agency Limited	Die figuur getoon The figure shown		steldie padreserwe voor van 'n gedeelte represents the road reserve of a portion van Nasionale Roete R37 Seksie Section 3	Vel Sheet 3 van 16 Plan P761/09
--	---------------------------------------	--	---	------------------------------------

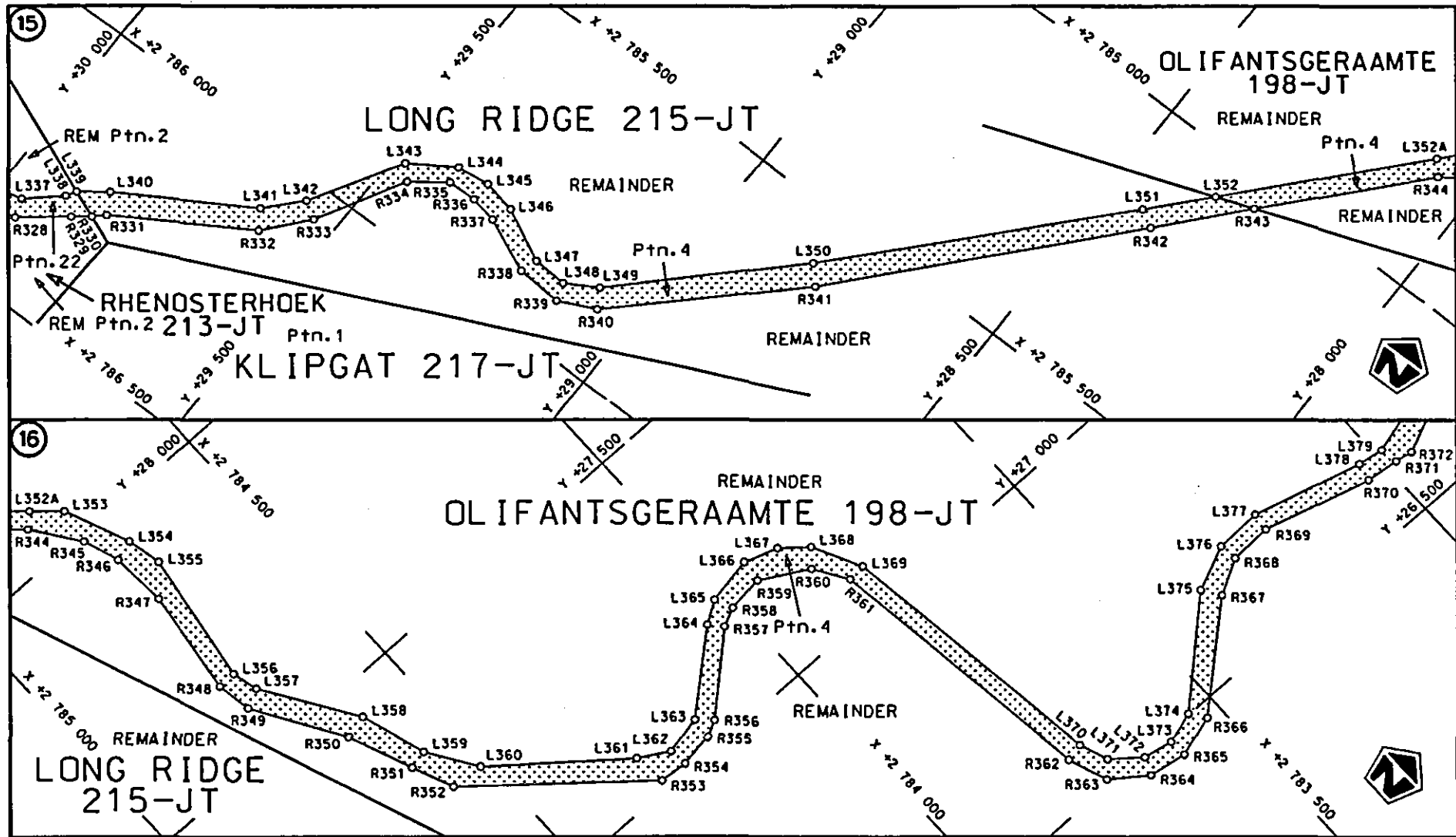


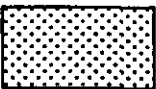
<p>Die Suid Afrikaanse Nasionale Padagentskap Beperk The South African National Roads Agency Limited</p>	<p>Die figuur getoon The figure shown</p>		<p>steldie podreserwe voor van 'n gedeelte van Nasionale Roete of National Route R37 Sektie Section 3</p>	<p>Vel Sheet 4 van of 16 Plan P761/09</p>
--	---	--	---	---

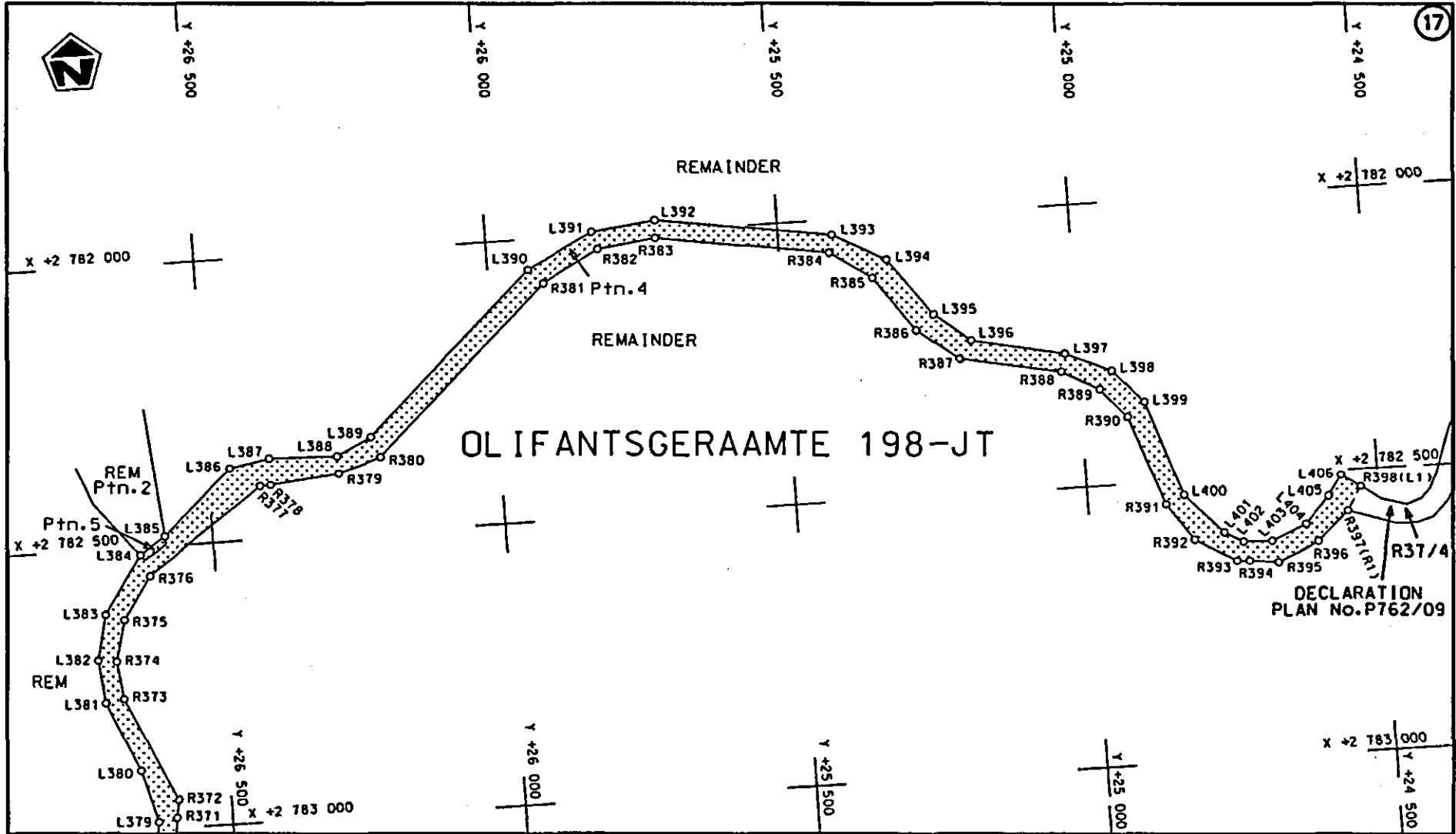


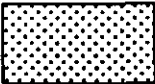


<p>Die Suid Afrikaanse Nasionale Padagentskap Beperk The South African National Roads Agency Limited</p>	<p>Die figuur getoon The figure shown</p>		<p>steldie padreserwe voor van 'n gedeelte represents the road reserve of a portion van Nasionale Roete R37 Seksie of National Route R37 Section</p>	<p>Vel Sheet 6 van of 16 Plan P761/09</p>
--	---	--	--	---



<p>Die Suid Afrikaanse Nasionale Padagentskap Beperk The South African National Roads Agency Limited</p>	<p>Die figuur getoon The figure shown</p>		<p>stel die padreserwe voor van 'n gedeelte represents the road reserve of a portion van Nasionale Roete of National Route</p> <p>R37 Seksie 3</p>	<p>Vel Sheet 7 van of 16</p> <p>Plan P761/09</p>
--	---	--	--	---



<p>Die Suid Afrikaanse Nasionale Padagentskap Beperk The South African National Roads Agency Limited</p>	<p>Die figuur getoon The figure shown</p> 	<p>steldie padreserwe voor van 'n gedeelte represents the road reserve of a portion von Nasionale Roete R37 Seksie 3 of National Route</p>	<p>Vel Sheet 8 van 16 Plan P761/09</p>
--	--	--	--

PADRESERWE KÖÖRDINATE				/ ROAD RESERVE CO-ORDINATES			
LINKERKANT/LEFT HAND SIDE				REGTERKANT/RIGHT HAND SIDE			
	Y	X	WG 31°		Y	X	
L1	53 048.750	2 777	530.120	R1	53 037.160	2 777	561.540
L2	53 040.720	2 777	514.500	R2	52 903.550	2 777	592.290
L3	52 783.340	2 777	560.790	R3	52 780.630	2 777	610.610
L4	52 648.210	2 777	586.430	R4	52 683.660	2 777	626.880
L5	52 115.340	2 777	661.310	R5	52 642.160	2 777	632.860
L6	51 918.320	2 777	698.520	AR5	52 626.020	2 777	644.140
L7	51 814.090	2 777	715.060	AR6	52 576.560	2 777	651.520
L8	51 621.620	2 777	746.080	AR7	52 557.070	2 777	645.120
L9	51 580.190	2 777	759.000	AR8	52 305.250	2 777	681.410
L10	51 472.940	2 777	801.010	AR9	52 275.750	2 777	696.380
L11	51 423.280	2 777	808.420	AR10	52 220.940	2 777	714.140
L12	51 426.930	2 777	818.930	AR11	51 919.770	2 777	739.340
L13	51 356.750	2 777	854.650	R6	51 670.010	2 777	777.560
L14	51 294.460	2 777	892.270	R7	51 351.820	2 777	902.940
L15	51 215.720	2 777	948.840	R8	51 182.770	2 778	028.640
L16	51 176.540	2 777	981.490	R9	51 114.580	2 778	096.660
L17	51 058.610	2 778	098.760	R10	50 942.660	2 778	284.230
L18	50 908.270	2 778	262.400	R11	50 917.380	2 778	309.580
L19	50 855.760	2 778	305.290	R12	50 885.410	2 778	333.550
L20	50 839.950	2 778	313.660	R13	50 855.740	2 778	349.570
L21	50 809.600	2 778	322.790	R14	50 822.570	2 778	360.820
L22	50 781.360	2 778	328.100	R15	50 818.160	2 778	362.070
L23	50 689.000	2 778	335.350	R16	50 788.120	2 778	367.360
L24	50 676.460	2 778	337.840	R17	50 693.210	2 778	374.540
L25	50 658.350	2 778	341.210	R18	50 668.050	2 778	379.980
L26	50 630.680	2 778	352.500	R19	50 646.440	2 778	389.290
L27	50 607.330	2 778	368.490	R20	50 631.120	2 778	400.290
L28	50 588.460	2 778	387.150	R21	50 616.770	2 778	415.080
L29	50 523.500	2 778	466.640	R22	50 550.540	2 778	494.960
L30	50 501.670	2 778	484.040	R23	50 523.500	2 778	516.540
L31	50 472.630	2 778	496.250	R24	50 489.260	2 778	532.480
L32	50 445.600	2 778	499.470	R25	50 452.170	2 778	538.590
L33	50 426.310	2 778	497.790	R26	50 418.940	2 778	536.850
L34	50 283.600	2 778	456.180	R27	50 306.360	2 778	500.870
L35	50 231.130	2 778	462.670	R28	50 283.170	2 778	494.860
L36	50 200.560	2 778	472.810	R29	50 215.000	2 778	511.730
L37	50 168.430	2 778	497.590	R30	50 194.430	2 778	527.370
L38	50 013.760	2 778	644.500	R31	50 012.780	2 778	696.200
L39	49 992.210	2 778	662.560	R32	49 990.960	2 778	709.100
L40	49 971.610	2 778	674.800	R33	49 960.830	2 778	720.130
L41	49 945.040	2 778	684.790	R34	49 927.190	2 778	727.840
L42	49 921.160	2 778	688.900	R35	49 891.840	2 778	728.200
L43	49 892.780	2 778	689.040	R36	49 844.450	2 778	718.390
L44	49 857.690	2 778	681.720	R37	49 687.960	2 778	647.610
L45	49 707.040	2 778	613.400	R38	49 659.100	2 778	628.130
L46	49 684.530	2 778	598.170	R39	49 633.570	2 778	599.120
L47	49 664.780	2 778	575.500	R40	49 617.660	2 778	567.650
L48	49 653.590	2 778	552.040	R41	49 608.850	2 778	532.200
L49	49 647.960	2 778	526.270	R42	49 611.360	2 778	485.620
L50	49 650.680	2 778	489.460	R43	49 641.790	2 778	363.440
L51	49 680.250	2 778	371.570	R44	49 643.170	2 778	339.990

Vel	9	Van	16	P761/09
Sheet		of		

PADRESERWE KOÖRDINATE				/	ROAD RESERVE CO-ORDINATES			
LINKERKANT/LEFT HAND SIDE					REGTERKANT/RIGHT HAND SIDE			
	Y	X	WG 31°		Y	X		
L52	49 684.020	2 778 342.380		R45	49 640.370	2 778 317.290		
L53	49 677.820	2 778 305.020		R46	49 625.150	2 778 287.010		
L54	49 664.410	2 778 272.670		R47	49 612.550	2 778 267.880		
L55	49 641.610	2 778 240.750		R48	49 559.300	2 778 233.770		
L56	49 604.700	2 778 212.980		R49	49 527.080	2 778 234.400		
L57	49 572.330	2 778 200.250		R50	49 290.860	2 778 258.000		
L58	49 526.940	2 778 195.400		R51	49 252.170	2 778 254.560		
L59	49 288.160	2 778 218.400		R52	49 210.830	2 778 239.130		
L60	49 256.980	2 778 215.260		R53	49 173.350	2 778 210.730		
L61	49 227.980	2 778 204.350		R54	49 152.450	2 778 180.600		
L62	49 198.560	2 778 179.000		R55	49 142.540	2 778 148.580		
L63	49 188.380	2 778 141.740		R56	49 095.530	2 777 994.810		
L64	49 127.570	2 777 949.840		R57	49 065.500	2 777 958.780		
L65	49 017.430	2 777 891.310		R58	49 027.100	2 777 940.070		
L66	48 669.970	2 777 885.370		R59	49 003.940	2 777 932.860		
L67	48 463.990	2 777 881.870		R60	48 978.660	2 777 930.000		
L68	48 106.030	2 777 847.840		R61	48 684.680	2 777 925.450		
L69	47 816.450	2 777 820.260		R62	48 486.840	2 777 922.370		
L70	47 724.350	2 777 792.360		R63	48 101.490	2 777 886.900		
L71	47 677.890	2 777 770.650		R64	47 844.390	2 777 862.760		
L72	47 617.020	2 777 729.350		R65	47 784.010	2 777 852.560		
L73	47 276.850	2 777 429.150		R66	47 725.520	2 777 835.340		
L74	47 190.290	2 777 423.110		R67	47 670.470	2 777 810.590		
L75	47 040.630	2 777 500.490		R68	47 617.000	2 777 778.610		
L76	47 008.010	2 777 505.430		R69	47 285.730	2 777 488.940		
L77	46 865.780	2 777 458.060		R70	47 238.120	2 777 466.370		
L78	46 789.100	2 777 462.930		R71	47 186.480	2 777 468.070		
L79	46 565.490	2 777 597.530		R72	47 083.060	2 777 525.720		
L80	46 404.730	2 777 800.360		R73	47 018.980	2 777 543.170		
L81	46 341.980	2 777 836.370		R74	46 959.750	2 777 535.210		
L82	46 257.700	2 777 843.440		R75	46 850.780	2 777 497.900		
L83	46 201.200	2 777 830.130		R76	46 797.430	2 777 506.310		
L84	45 842.740	2 777 588.600		R77	46 615.950	2 777 624.380		
L85	45 797.210	2 777 552.830		R78	46 570.850	2 777 658.950		
L86	45 757.730	2 777 507.420		R79	46 460.320	2 777 800.260		
L87	45 673.330	2 777 353.540		R80	46 415.210	2 777 842.210		
L88	45 608.970	2 777 290.250		R81	46 356.710	2 777 872.830		
L89	45 530.850	2 777 237.490		R82	46 294.220	2 777 885.550		
L90	45 460.490	2 777 142.010		R83	46 261.990	2 777 882.810		
L91	45 422.350	2 777 094.250		R84	46 231.430	2 777 881.100		
L92	45 369.820	2 777 058.850		R85	46 172.280	2 777 859.830		
L93	45 307.140	2 777 037.200		R86	45 809.120	2 777 611.620		
L94	45 224.600	2 777 040.300		R87	45 762.410	2 777 571.160		
L95	45 182.040	2 777 051.590		R88	45 724.050	2 777 524.590		
L96	45 137.140	2 777 074.220		R89	45 636.140	2 777 367.020		
L97	45 099.480	2 777 106.440		R90	45 598.240	2 777 328.860		
L98	45 081.710	2 777 128.780		R91	45 497.520	2 777 258.930		
L99	44 988.970	2 777 256.330		R92	45 425.450	2 777 158.890		
L100	44 911.980	2 777 346.370		R93	45 389.520	2 777 119.020		
L101	44 827.020	2 777 429.400		R94	45 343.330	2 777 089.530		
L102	44 734.550	2 777 503.000		R95	45 288.150	2 777 074.830		

Vel	10	Van	16	P761/09
Sheet		of		

PADRESERWE KOÖRDINATE				/	ROAD RESERVE CO-ORDINATES			
LINKERKANT/LEFT HAND SIDE					REGTERKANT/RIGHT HAND SIDE			
	Y	X	WG	31°	Y	X		
L103	44 604.710	2 777 592.460		R96	45 234.850	2 777 074.870		
L104	44 503.870	2 777 654.110		R97	45 179.200	2 777 094.340		
L105	44 393.580	2 777 671.090		R98	45 134.590	2 777 125.950		
L106	44 337.530	2 777 661.910		R99	45 077.650	2 777 201.160		
L107	44 284.880	2 777 640.410		R100	45 041.140	2 777 251.520		
L108	44 151.300	2 777 556.260		R101	44 940.350	2 777 373.590		
L109	44 088.390	2 777 534.440		R102	44 875.570	2 777 439.970		
L110	44 025.960	2 777 537.480		R103	44 790.070	2 777 509.990		
L111	43 913.450	2 777 590.000		R104	44 659.120	2 777 602.870		
L112	43 862.220	2 777 613.320		R105	44 557.440	2 777 671.270		
L113	43 632.120	2 777 666.710		R106	44 440.130	2 777 710.060		
L114	43 573.950	2 777 670.010		R107	44 315.520	2 777 696.380		
L115	43 456.190	2 777 628.810		R108	44 141.330	2 777 594.640		
L116	43 436.880	2 777 613.830		R109	44 092.380	2 777 574.730		
L117	43 404.520	2 777 601.340		R110	44 037.370	2 777 575.450		
L118	43 348.120	2 777 595.150		R111	43 875.850	2 777 648.960		
L119	43 284.740	2 777 610.150		R112	43 670.890	2 777 697.800		
L120	43 270.800	2 777 617.680		R113	43 598.820	2 777 709.900		
L121	42 983.000	2 777 806.780		R114	43 538.030	2 777 704.090		
L122	42 764.170	2 777 947.990		R115	43 421.410	2 777 654.790		
L123	42 716.490	2 777 987.060		R116	43 372.000	2 777 633.600		
L124	42 675.530	2 778 033.260		R117	43 318.060	2 777 637.770		
L125	42 643.320	2 778 085.280		R118	42 895.590	2 777 908.580		
L126	42 618.230	2 778 143.690		R119	42 823.270	2 777 956.410		
L127	42 604.030	2 778 204.680		R120	42 767.790	2 777 994.400		
L128	42 593.000	2 778 367.210		R121	42 717.510	2 778 044.690		
L129	42 565.870	2 778 856.290		R122	42 683.670	2 778 093.210		
L130	42 541.250	2 779 294.910		R123	42 659.330	2 778 145.790		
L131	42 532.990	2 779 349.980		R124	42 643.100	2 778 205.380		
L132	42 514.730	2 779 408.080		R125	42 626.150	2 778 493.890		
L133	42 495.070	2 779 446.300		R126	42 603.090	2 778 894.430		
L134	42 475.640	2 779 476.650		R127	42 580.550	2 779 296.750		
L135	42 451.580	2 779 507.400		R128	42 572.550	2 779 355.780		
L136	42 308.650	2 779 646.860		R129	42 563.710	2 779 388.560		
L137	42 039.150	2 779 909.090		R130	42 550.070	2 779 424.170		
L138	41 696.150	2 780 242.760		R131	42 527.740	2 779 472.320		
L139	41 320.960	2 780 603.120		R132	42 489.870	2 779 525.100		
L140	41 282.220	2 780 653.600		R133	42 299.440	2 779 711.380		
L141	41 258.460	2 780 692.420		R134	42 045.240	2 779 958.530		
L142	41 236.050	2 780 742.650		R135	41 716.590	2 780 279.690		
L143	41 224.670	2 780 787.580		R136	41 469.680	2 780 517.790		
L144	41 220.100	2 780 838.340		R137	41 389.880	2 780 596.390		
L145	41 212.020	2 780 992.360		R138	41 316.280	2 780 674.690		
L146	41 222.120	2 781 050.810		R139	41 278.690	2 780 742.840		
L147	41 227.630	2 781 139.870		R140	41 260.980	2 780 841.490		
L148	41 220.310	2 781 203.620		R141	41 264.540	2 781 021.640		
L149	41 210.880	2 781 235.900		R142	41 268.290	2 781 121.060		
L150	41 186.020	2 781 285.830		R143	41 257.580	2 781 217.790		
L151	41 168.360	2 781 311.360		R144	41 220.590	2 781 308.350		
L152	41 132.450	2 781 348.840		R145	41 203.110	2 781 332.740		
L153	41 108.350	2 781 368.300		R146	41 190.480	2 781 346.120		

Ve1	11	Van	16	P761/09
Sheet		of		

PADRESERWE KOÖRDINATE				/ ROAD RESERVE CO-ORDINATES			
LINKERKANT/LEFT HAND SIDE				REGTERKANT/RIGHT HAND SIDE			
	Y	X	WG	31°	Y	X	
L154	40 757.120	2 781 628.100		R147	41 153.590	2 781 382.380	
L155	40 750.070	2 781 633.930		R148	40 787.260	2 781 654.860	
L156	40 590.600	2 781 751.770		R149	40 613.950	2 781 784.020	
L157	40 553.110	2 781 775.730		R150	40 586.010	2 781 802.560	
L158	40 523.240	2 781 789.330		R151	40 536.200	2 781 826.480	
L159	40 483.480	2 781 802.930		R152	40 493.570	2 781 840.150	
L160	40 446.030	2 781 809.630		R153	40 456.540	2 781 847.540	
L161	40 395.980	2 781 811.260		R154	40 432.270	2 781 849.710	
L162	39 986.370	2 781 759.960		R155	40 383.060	2 781 850.630	
L163	39 817.040	2 781 738.750		R156	39 985.970	2 781 800.120	
L164	39 781.840	2 781 734.030		R157	39 809.130	2 781 777.930	
L165	39 709.560	2 781 724.620		R158	39 720.090	2 781 766.500	
L166	39 671.890	2 781 716.460		R159	39 703.310	2 781 764.290	
L167	39 640.750	2 781 705.830		R160	39 629.400	2 781 744.080	
L168	39 612.590	2 781 691.960		R161	39 591.490	2 781 726.000	
L169	39 582.380	2 781 672.400		R162	39 559.400	2 781 705.310	
L170	39 550.650	2 781 644.980		R163	39 522.330	2 781 673.080	
L171	39 528.420	2 781 620.580		R164	39 495.620	2 781 644.360	
L172	39 342.370	2 781 377.610		R165	39 288.390	2 781 375.310	
L173	39 316.180	2 781 348.320		R166	39 238.710	2 781 341.980	
L174	39 284.440	2 781 322.480		R167	39 213.180	2 781 332.130	
L175	39 257.010	2 781 306.320		R168	39 179.140	2 781 324.320	
L176	39 223.750	2 781 293.780		R169	39 152.770	2 781 322.050	
L177	39 188.640	2 781 285.870		R170	39 123.520	2 781 324.070	
L178	39 174.970	2 781 285.170		R171	39 092.000	2 781 330.160	
L179	39 157.810	2 781 282.940		R172	39 054.510	2 781 343.990	
L180	39 111.510	2 781 285.000		R173	39 034.860	2 781 355.020	
L181	39 081.230	2 781 291.670		R174	39 013.260	2 781 371.340	
L182	39 039.220	2 781 308.250		R175	38 904.720	2 781 474.790	
L183	39 013.550	2 781 323.230		R176	38 894.010	2 781 493.280	
L184	38 988.120	2 781 342.380		R177	38 876.030	2 781 539.690	
L185	38 889.390	2 781 433.340		R178	38 858.400	2 781 577.270	
L186	38 870.720	2 781 455.240		R179	38 840.940	2 781 605.250	
L187	38 858.040	2 781 479.170		R180	38 787.190	2 781 663.200	
L188	38 837.570	2 781 531.540		R181	38 725.910	2 781 704.150	
L189	38 824.220	2 781 558.370		R182	38 640.370	2 781 736.240	
L190	38 808.380	2 781 582.510		R183	38 436.870	2 781 765.450	
L191	38 786.870	2 781 609.180		R184	38 170.820	2 781 806.560	
L192	38 731.510	2 781 655.870		R185	38 126.900	2 781 846.300	
L193	38 714.500	2 781 665.720		R186	38 105.310	2 781 954.780	
L194	38 679.140	2 781 682.510		R187	38 071.880	2 782 016.290	
L195	38 648.250	2 781 692.450		R188	38 000.450	2 782 115.790	
L196	38 573.390	2 781 704.920		R189	37 968.560	2 782 174.550	
L197	38 424.360	2 781 727.030		R190	37 959.660	2 782 254.410	
L198	38 231.810	2 781 760.120		R191	37 934.690	2 782 303.900	
L199	38 154.380	2 781 778.680		R192	37 863.600	2 782 422.480	
L200	38 114.740	2 781 805.030		R193	37 858.930	2 782 489.360	
L201	38 086.320	2 781 844.870		R194	37 931.470	2 782 738.860	
L202	38 048.960	2 781 974.970		R195	37 923.530	2 782 809.020	
L203	38 012.210	2 782 022.730		R196	37 856.710	2 782 962.480	
L204	37 943.270	2 782 133.370		R197	37 780.970	2 783 167.080	

Vel	12	Van	16	P761/09
Sheet		of		

PADRESERWE KOÖRDINATE				/	ROAD RESERVE CO-ORDINATES			
LINKERKANT/LEFT HAND SIDE					REGTERKANT/RIGHT HAND SIDE			
	Y	X	WG	31°	Y	X		
L205	37 932.430	2 782 201.480		R198	37 788.410	2 783 233.350		
L206	37 907.650	2 782 278.000		R199	37 877.100	2 783 326.750		
L207	37 847.250	2 782 370.570		R200	37 885.380	2 783 374.060		
L208	37 821.790	2 782 441.060		R201	37 847.620	2 783 435.540		
L209	37 827.450	2 782 519.520		R202	37 776.070	2 783 462.610		
L210	37 894.140	2 782 761.230		R203	37 742.750	2 783 495.600		
L211	37 820.650	2 782 945.590		R204	37 746.290	2 783 569.360		
L212	37 751.390	2 783 153.540		R205	37 740.530	2 783 624.880		
L213	37 740.310	2 783 203.400		R206	37 690.820	2 783 679.350		
L214	37 756.320	2 783 247.770		R207	37 635.210	2 783 697.850		
L215	37 848.870	2 783 352.860		R208	37 597.800	2 783 684.960		
L216	37 828.080	2 783 403.630		R209	37 565.610	2 783 641.540		
L217	37 745.510	2 783 429.120		R210	37 567.170	2 783 524.040		
L218	37 708.690	2 783 478.670		R211	37 542.110	2 783 483.520		
L219	37 709.460	2 783 570.500		R212	37 493.090	2 783 487.330		
L220	37 700.090	2 783 604.920		R213	37 469.920	2 783 525.460		
L221	37 664.820	2 783 654.160		R214	37 487.620	2 783 615.830		
L222	37 618.780	2 783 657.000		R215	37 445.030	2 783 665.090		
L223	37 601.960	2 783 515.190		R216	37 361.550	2 783 702.330		
L224	37 571.250	2 783 455.480		R217	37 369.060	2 783 780.110		
L225	37 540.390	2 783 439.770		R218	37 471.510	2 783 806.670		
L226	37 483.160	2 783 447.420		R219	37 512.420	2 783 853.770		
L227	37 450.970	2 783 481.570		R220	37 508.130	2 783 912.400		
L228	37 435.380	2 783 533.220		R221	37 490.370	2 783 985.460		
L229	37 442.610	2 783 587.770		R222	37 558.530	2 784 215.540		
L230	37 431.220	2 783 621.690		R223	37 566.200	2 784 259.990		
L231	37 342.050	2 783 665.980		R224	37 564.620	2 784 269.630		
L232	37 302.820	2 783 730.950		R225	37 531.560	2 784 333.150		
L233	37 353.260	2 783 821.540		R226	37 464.940	2 784 363.770		
L234	37 428.790	2 783 842.710		R227	37 394.320	2 784 348.270		
L235	37 469.050	2 783 874.940		R228	37 366.510	2 784 316.330		
L236	37 452.460	2 783 931.080		R229	37 327.930	2 784 208.470		
L237	37 453.680	2 784 003.510		R230	37 273.840	2 784 146.310		
L238	37 527.770	2 784 221.840		R231	37 207.430	2 784 146.780		
L239	37 529.990	2 784 273.500		R232	37 023.520	2 784 251.910		
L240	37 527.840	2 784 279.690		R233	36 949.640	2 784 270.290		
L241	37 510.600	2 784 303.330		R234	36 880.310	2 784 251.990		
L242	37 464.120	2 784 324.270		R235	36 640.000	2 784 103.660		
L243	37 444.980	2 784 322.250		R236	36 616.380	2 784 079.910		
L244	37 392.610	2 784 299.360		R237	36 556.070	2 784 065.330		
L245	37 348.830	2 784 162.960		R238	36 494.370	2 784 079.900		
L246	37 294.100	2 784 112.490		R239	36 451.000	2 784 114.800		
L247	37 191.600	2 784 112.980		R240	36 417.520	2 784 209.660		
L248	37 019.650	2 784 215.090		R241	36 455.630	2 784 294.170		
L249	36 958.230	2 784 232.310		R242	36 579.050	2 784 402.060		
L250	36 890.450	2 784 213.680		R243	36 607.750	2 784 491.210		
L251	36 628.110	2 784 049.570		R244	36 621.700	2 784 745.110		
L252	36 609.680	2 784 040.740		R245	36 613.420	2 784 834.550		
L253	36 550.190	2 784 031.250		R246	36 548.180	2 784 899.490		
L254	36 470.210	2 784 050.940		R247	36 446.360	2 784 920.640		
L255	36 400.740	2 784 114.890		R248	36 335.750	2 784 891.980		

Vel	13	Van	16	P761/09
Sheet		of		

PADRESERWE KOÖRDINATE				/	ROAD RESERVE CO-ORDINATES			
LINKERKANT/LEFT HAND SIDE					REGTERKANT/RIGHT HAND SIDE			
	Y	X	WG 31°		Y	X		
L256	36 379.250	2 784 223.080		R249	36 242.420	2 784 845.550		
L257	36 428.430	2 784 318.400		R250	36 203.160	2 784 831.350		
L258	36 541.170	2 784 416.190		R251	36 127.230	2 784 834.600		
L259	36 574.380	2 784 496.900		R252	36 101.180	2 784 835.610		
L260	36 585.030	2 784 763.940		R253	36 038.180	2 784 831.700		
L261	36 569.650	2 784 818.320		R254	35 986.190	2 784 805.580		
L262	36 514.850	2 784 870.510		R255	35 953.120	2 784 767.180		
L263	36 451.740	2 784 887.980		R256	35 927.560	2 784 710.480		
L264	36 381.210	2 784 868.630		R257	35 910.350	2 784 631.970		
L265	36 254.510	2 784 809.040		R258	35 896.750	2 784 586.210		
L266	36 212.100	2 784 793.310		R259	35 863.800	2 784 540.910		
L267	36 086.510	2 784 796.560		R260	35 812.200	2 784 505.840		
L268	36 052.390	2 784 792.230		R261	35 764.030	2 784 495.260		
L269	36 019.340	2 784 777.830		R262	35 587.010	2 784 505.380		
L270	35 989.600	2 784 752.730		R263	35 510.360	2 784 550.430		
L271	35 965.810	2 784 700.100		R264	35 481.540	2 784 598.550		
L272	35 956.550	2 784 675.130		R265	35 434.270	2 784 840.440		
L273	35 931.980	2 784 573.140		R266	35 391.550	2 784 938.790		
L274	35 894.680	2 784 515.670		R267	35 325.090	2 785 016.960		
L275	35 821.400	2 784 468.790		R268	35 164.880	2 785 161.100		
L276	35 763.370	2 784 455.920		R269	35 122.290	2 785 230.260		
L277	35 715.390	2 784 449.810		R270	35 109.050	2 785 358.170		
L278	35 581.570	2 784 470.720		R271	35 143.790	2 785 504.200		
L279	35 525.240	2 784 490.890		R272	35 143.680	2 785 564.440		
L280	35 484.200	2 784 522.750		R273	35 134.600	2 785 613.640		
L281	35 446.540	2 784 589.710		R274	35 127.300	2 785 633.500		
L282	35 398.150	2 784 841.270		R275	35 076.140	2 785 715.750		
L283	35 360.560	2 784 923.710		R276	35 005.760	2 785 769.430		
L284	35 298.210	2 784 993.760		R277	34 933.120	2 785 794.500		
L285	35 159.020	2 785 105.450		R278	34 843.280	2 785 788.240		
L286	35 090.490	2 785 212.940		R279	34 437.630	2 785 581.640		
L287	35 065.790	2 785 328.990		R280	34 167.400	2 785 389.730		
L288	35 104.980	2 785 524.130		R281	34 059.290	2 785 312.910		
L289	35 099.300	2 785 603.340		R282	33 710.630	2 785 073.880		
L290	35 049.720	2 785 694.050		R283	33 353.560	2 784 826.840		
L291	34 990.550	2 785 737.140		R284	33 066.600	2 784 538.950		
L292	34 919.490	2 785 757.900		R285	32 938.070	2 784 410.290		
L293	34 861.080	2 785 757.510		R286	32 899.660	2 784 371.350		
L294	34 439.800	2 785 519.470		R287	32 857.060	2 784 339.680		
L295	34 184.850	2 785 360.490		R288	32 790.200	2 784 310.420		
L296	34 136.990	2 785 328.610		R289	32 605.390	2 784 265.460		
L297	33 730.170	2 785 047.020		R290	32 259.460	2 784 218.500		
L298	33 376.430	2 784 792.560		R291	32 213.750	2 784 216.740		
L299	33 085.380	2 784 511.000		R292	32 167.040	2 784 236.430		
L300	32 928.940	2 784 356.400		R293	32 092.130	2 784 317.420		
L301	32 921.540	2 784 350.970		R294	32 070.940	2 784 335.220		
L302	32 868.020	2 784 310.950		R295	32 055.500	2 784 350.670		
L303	32 804.160	2 784 276.330		R296	32 011.580	2 784 364.560		
L304	32 609.760	2 784 233.360		R297	31 823.220	2 784 403.730		
L305	32 266.210	2 784 186.430		R298	31 793.450	2 784 408.300		
L306	32 182.560	2 784 187.280		R299	31 716.980	2 784 391.540		

Vel	14	Van	16	P761/09
Sheet		of		

PADRESERWE KOÖRDINATE				/	ROAD RESERVE CO-ORDINATES			
LINKERKANT/LEFT HAND SIDE					REGTERKANT/RIGHT HAND SIDE			
	Y	X	WG	31°	Y	X		
L307	32 148.910	2 784 202.390		R300	31 601.120	2 784 356.910		
L308	32 047.140	2 784 314.850		R301	31 577.700	2 784 344.810		
L309	32 008.110	2 784 333.210		R302	31 411.480	2 784 352.880		
L310	31 991.970	2 784 338.870		R303	31 379.860	2 784 367.120		
L311	31 797.340	2 784 371.270		R304	31 344.220	2 784 380.800		
L312	31 724.690	2 784 351.210		R305	31 298.420	2 784 420.430		
L313	31 566.030	2 784 312.660		R306	31 045.970	2 784 827.660		
L314	31 392.860	2 784 327.640		R307	30 983.910	2 784 936.110		
L315	31 317.890	2 784 352.360		R308	30 957.440	2 784 991.670		
L316	31 296.460	2 784 370.970		R309	30 922.780	2 785 169.480		
L317	31 271.530	2 784 396.070		R310	30 906.820	2 785 274.210		
L318	31 083.970	2 784 705.720		R311	30 839.700	2 785 668.250		
L319	30 952.950	2 784 918.270		R312	30 820.700	2 785 726.840		
L320	30 925.420	2 784 973.870		R313	30 785.220	2 785 791.060		
L321	30 891.820	2 785 168.480		R314	30 730.280	2 785 858.760		
L322	30 834.990	2 785 504.730		R315	30 721.370	2 785 869.340		
L323	30 750.950	2 785 774.410		R316	30 691.400	2 785 892.460		
L324	30 740.780	2 785 790.870		R317	30 646.330	2 785 921.500		
L325	30 703.650	2 785 831.790		R318	30 572.840	2 785 980.540		
L326	30 683.620	2 785 843.140		R319	30 553.750	2 785 999.160		
L327	30 603.480	2 785 905.690		R320	30 406.470	2 786 147.860		
L328	30 546.720	2 785 955.760		R321	30 321.220	2 786 190.020		
L329	30 468.890	2 786 033.150		R322	30 232.940	2 786 195.480		
L330	30 385.380	2 786 121.830		R323	30 203.070	2 786 207.420		
L331	30 319.920	2 786 158.510		R324	30 160.490	2 786 236.640		
L332	30 222.610	2 786 163.970		R325	30 115.080	2 786 324.180		
L333	30 180.650	2 786 173.600		R326	30 080.570	2 786 352.180		
L334	30 128.940	2 786 223.310		R327	29 994.920	2 786 377.090		
L335	30 060.460	2 786 317.860		R328	29 943.440	2 786 367.260		
L336	29 995.930	2 786 343.610		R329	29 868.190	2 786 307.040		
L337	29 955.200	2 786 333.750		R330	29 840.350	2 786 284.920		
L338	29 898.900	2 786 283.200		R331	29 822.140	2 786 267.350		
L339	29 888.320	2 786 265.710		R332	29 601.380	2 786 128.830		
L340	29 842.880	2 786 230.840		R333	29 539.010	2 786 055.450		
L341	29 623.330	2 786 095.400		R334	29 455.330	2 785 904.480		
L342	29 569.740	2 786 036.590		R335	29 396.710	2 785 860.490		
L343	29 478.530	2 785 881.160		R336	29 345.640	2 785 858.950		
L344	29 401.730	2 785 830.940		R337	29 298.330	2 785 868.410		
L345	29 343.840	2 785 823.080		R338	29 204.740	2 785 910.180		
L346	29 285.950	2 785 834.970		R339	29 124.780	2 785 914.540		
L347	29 194.610	2 785 880.600		R340	29 059.840	2 785 884.030		
L348	29 134.530	2 785 883.050		R341	28 791.280	2 785 621.630		
L349	29 080.180	2 785 850.550		R342	28 401.190	2 785 185.490		
L350	28 819.090	2 785 591.260		R343	28 281.150	2 785 048.740		
L351	28 431.940	2 785 167.600		R344	28 067.740	2 784 809.180		
L352	28 347.030	2 785 073.050		R345	27 987.310	2 784 751.660		
L353	28 050.250	2 784 740.800		R346	27 924.240	2 784 730.030		
L354	27 936.050	2 784 693.990		R347	27 827.340	2 784 724.790		
L355	27 875.750	2 784 681.170		R348	27 643.390	2 784 749.790		
L356	27 644.220	2 784 717.280		R349	27 582.410	2 784 739.800		
L357	27 599.010	2 784 706.170		R350	27 430.230	2 784 645.190		

Vel 15 Van 16
Sheet of

P761/09

PADRESERWE KOÖRDINATE				/	ROAD RESERVE CO-ORDINATES			
LINKERKANT/LEFT HAND SIDE					REGTERKANT/RIGHT HAND SIDE			
	Y	X	WG 31°		Y	X		
L358	27 441.010	2 784	604.360	R351	27 318.040	2 784	600.150	
L359	27 324.870	2 784	567.540	R352	27 245.870	2 784	570.400	
L360	27 241.410	2 784	512.100	R353	27 015.930	2 784	297.650	
L361	27 073.450	2 784	303.980	R354	27 011.810	2 784	248.380	
L362	27 043.540	2 784	251.970	R355	27 020.470	2 784	188.620	
L363	27 058.500	2 784	185.310	R356	27 035.460	2 784	160.590	
L364	27 168.080	2 784	057.360	R357	27 146.170	2 784	037.660	
L365	27 192.940	2 784	018.460	R358	27 161.440	2 784	005.080	
L366	27 208.580	2 783	936.390	R359	27 170.150	2 783	940.380	
L367	27 189.310	2 783	876.740	R360	27 123.410	2 783	857.570	
L368	27 152.390	2 783	832.670	R361	27 065.670	2 783	820.590	
L369	27 068.110	2 783	789.060	R362	26 577.870	2 783	752.890	
L370	26 584.110	2 783	721.390	R363	26 508.500	2 783	727.120	
L371	26 534.290	2 783	702.480	R364	26 463.810	2 783	665.570	
L372	26 494.110	2 783	652.810	R365	26 452.570	2 783	599.150	
L373	26 484.250	2 783	601.170	R366	26 474.970	2 783	527.350	
L374	26 501.830	2 783	547.040	R367	26 618.680	2 783	363.810	
L375	26 650.170	2 783	384.650	R368	26 651.920	2 783	303.000	
L376	26 683.410	2 783	307.540	R369	26 654.870	2 783	229.630	
L377	26 686.360	2 783	225.410	R370	26 602.260	2 783	039.140	
L378	26 633.790	2 783	032.210	R371	26 595.120	2 782	981.290	
L379	26 626.610	2 782	986.520	R372	26 589.900	2 782	950.560	
L380	26 650.940	2 782	894.540	R373	26 670.430	2 782	766.060	
L381	26 701.920	2 782	771.280	R374	26 678.880	2 782	698.520	
L382	26 710.380	2 782	694.550	R375	26 660.760	2 782	626.190	
L383	26 692.260	2 782	614.350	R376	26 612.140	2 782	551.440	
L384	26 626.360	2 782	512.540	R377	26 412.900	2 782	404.940	
L385	26 581.380	2 782	482.680	R378	26 394.980	2 782	404.280	
L386	26 462.950	2 782	369.790	R379	26 277.860	2 782	390.950	
L387	26 394.610	2 782	355.910	R380	26 205.260	2 782	366.770	
L388	26 278.740	2 782	359.460	R381	25 906.160	2 782	079.180	
L389	26 219.550	2 782	330.710	R382	25 808.970	2 782	025.290	
L390	25 930.850	2 782	053.170	R383	25 709.600	2 782	011.590	
L391	25 817.420	2 781	993.810	R384	25 413.940	2 782	057.920	
L392	25 708.380	2 781	980.080	R385	25 342.300	2 782	107.450	
L393	25 407.560	2 782	026.400	R386	25 273.400	2 782	204.790	
L394	25 316.490	2 782	075.970	R387	25 202.100	2 782	260.900	
L395	25 241.880	2 782	178.770	R388	25 030.880	2 782	294.680	
L396	25 180.460	2 782	229.400	R389	24 966.470	2 782	330.010	
L397	25 021.270	2 782	263.190	R390	24 921.890	2 782	382.270	
L398	24 944.030	2 782	298.530	R391	24 865.970	2 782	541.310	
L399	24 891.470	2 782	357.910	R392	24 821.310	2 782	607.650	
L400	24 834.500	2 782	526.690	R393	24 751.520	2 782	648.920	
L401	24 769.270	2 782	597.850	R394	24 730.000	2 782	650.030	
L402	24 737.130	2 782	616.240	R395	24 680.560	2 782	656.100	
L403	24 687.990	2 782	618.040	R396	24 608.790	2 782	624.380	
L404	24 627.880	2 782	591.710	R397	24 554.880	2 782	573.060	
L405	24 586.440	2 782	544.880	R398	24 530.000	2 782	532.070	
L406	24 562.740	2 782	509.000					

Vel	16	Van	16	P761/09
Sheet		of		

Printed by and obtainable from the Government Printer, Bosman Street, Private Bag X85, Pretoria, 0001
Publications: Tel: (012) 334-4508, 334-4509, 334-4510
Advertisements: Tel: (012) 334-4673, 334-4674, 334-4504
Subscriptions: Tel: (012) 334-4735, 334-4736, 334-4737
Cape Town Branch: Tel: (021) 465-7531

Gedruk deur en verkrygbaar by die Staatsdrukker, Bosmanstraat, Privaatsak X85, Pretoria, 0001
Publikasies: Tel: (012) 334-4508, 334-4509, 334-4510
Advertensies: Tel: (012) 334-4673, 334-4674, 334-4504
Subskripsies: Tel: (012) 334-4735, 334-4736, 334-4737
Kaapstad-tak: Tel: (021) 465-7531