

**THE PROVINCE OF
GAUTENG**



**DIE PROVINSIE VAN
GAUTENG**

Provincial Gazette Provinsiale Koerant

EXTRAORDINARY • BUITENGEWOON

Selling price • Verkoopprijs: **R2.50**
Other countries • Buitelands: **R3.25**

Vol. 26

PRETORIA
13 FEBRUARY 2020
13 FEBRUARIE 2020

No. 38

We all have the power to prevent AIDS



**AIDS
HELPLINE**

0800 012 322

DEPARTMENT OF HEALTH

Prevention is the cure

N.B. The Government Printing Works will not be held responsible for the quality of "Hard Copies" or "Electronic Files" submitted for publication purposes

ISSN 1682-4525



9 771682 452005

00038



IMPORTANT NOTICE OF OFFICE RELOCATION**government
printing**Department:
Government Printing Works
REPUBLIC OF SOUTH AFRICAPrivate Bag X85, PRETORIA, 0001 149 Bosman Street, PRETORIA
Tel: 012 748 6197, Website:**URGENT NOTICE TO OUR VALUED CUSTOMERS: PUBLICATIONS
OFFICE'S RELOCATION HAS BEEN TEMPORARILY SUSPENDED.**

Please be advised that the GPW Publications office will no longer move to 88 Visagie Street as indicated in the previous notices.

The move has been suspended due to the fact that the new building in 88 Visagie Street is not ready for occupation yet.

We will later on issue another notice informing you of the new date of relocation.

We are doing everything possible to ensure that our service to you is not disrupted.

As things stand, we will continue providing you with our normal service from the current location at 196 Paul Kruger Street, Masada building.

Customers who seek further information and or have any questions or concerns are free to contact us through telephone 012 748 6066 or email Ms Maureen Toka at Maureen.Toka@gpw.gov.za or cell phone at 082 859 4910.

Please note that you will still be able to download gazettes free of charge from our website _____.

We apologise for any inconvenience this might have caused.

Issued by GPW Communications

IMPORTANT NOTICE:

THE GOVERNMENT PRINTING WORKS WILL NOT BE HELD RESPONSIBLE FOR ANY ERRORS THAT MIGHT OCCUR DUE TO THE SUBMISSION OF INCOMPLETE / INCORRECT / ILLEGIBLE COPY.

No FUTURE QUERIES WILL BE HANDLED IN CONNECTION WITH THE ABOVE.

CONTENTS

		<i>Gazette</i>	<i>Page</i>
		<i>No.</i>	<i>No.</i>
PROCLAMATION • PROKLAMASIE			
19	Gauteng Infrastructure Act (8/2001): Proclamation of access roads in connection with Provincial Roads K54 and P154-1 (K22) over the Farms Donkerhoek 370 JR, Barendshoek 630 JR and Mooiplaats 367 JR.....	38	4
20	Gauteng Transport Infrastructure Act (8/2001): Proclamation of K133 intersection with K148 in terms of Gauteng Transport Infrastructure Act.....	38	7

PROCLAMATION • PROKLAMASIE

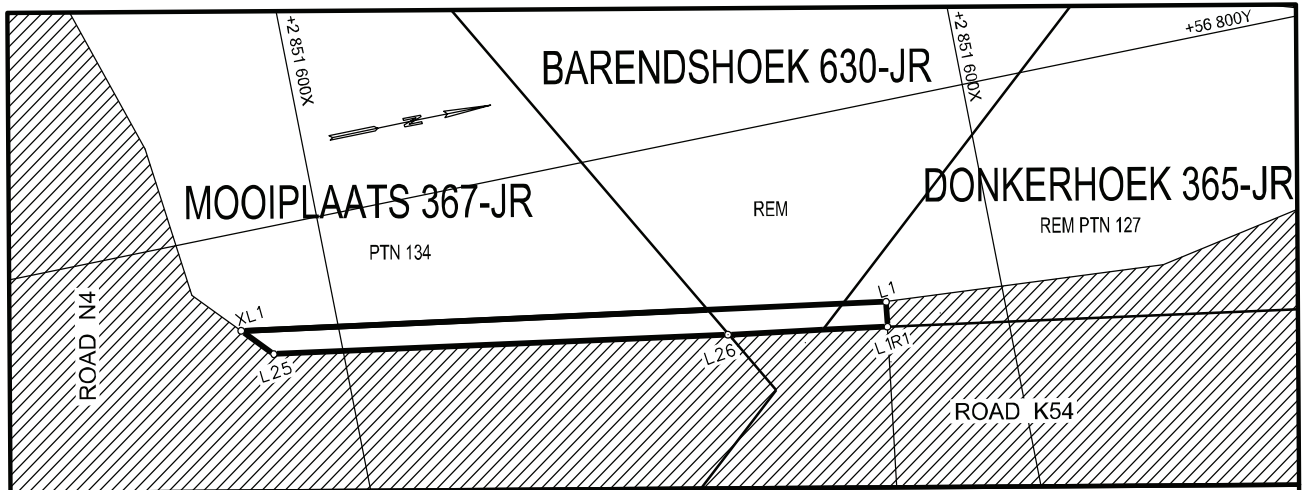
PROCLAMATION 19 OF 2020**PROCLAMATION OF ACCESS ROADS IN CONNECTION WITH PROVINCIAL ROADS K54 AND P154-1 (K22) OVER THE FARMS DONKERHOEK 370 JR, BARENDSHOEK 630 JR AND MOOPLAATS 367 JR.**

In terms of section 13(1) of the Gauteng Transport Infrastructure Act, 2001 (Act No. 8 of 2001) the MEC proclaims that access roads in connection with Provincial Roads K54 and P154-1 (K22) shall exist over the farms Donkerhoek 370 JR, Barendshoek 630 JR and Mooiplaats 367 JR as indicated on the accompanying sketch plans.

In terms of section 23(6) of the aforementioned act, it is hereby declared that boundary beacons demarcating the said access roads, have been placed and that plans PRS90/144/2V(1) and PRS86/153/10V(1) indicating the land encroached upon by virtue of the proclamation of the access road, is available for inspection by any interested person in the Plan Room of the Department of Roads and Transport, 1215 Nico Smit street, Koedoespoort, Pretoria, during office hours.

Reference: 2/1/1/2/3/1-K54

**MEC Resolution 003
Dated 10/10/2019**



REFERENCE

ROAD PROCLAIMED 

EXISTING ROAD 

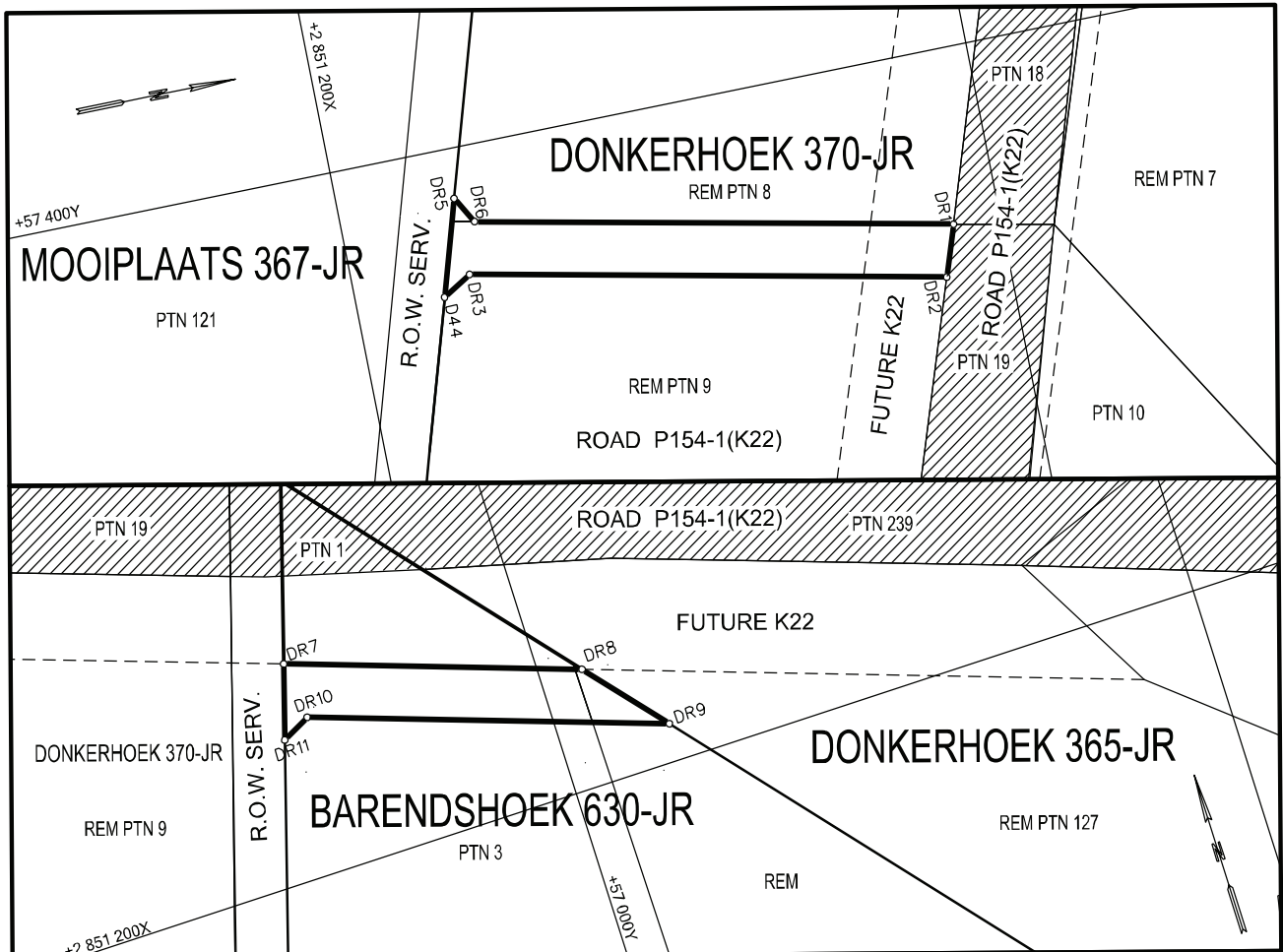
THE FIGURES : XL1, L1, L1R1, L26, L25, XL1.

REPRESENTS THE PROCLAMATION OF PROVINCIAL ROAD K54 OVER PORTION 134 OF THE FARM MOOIPLAATS 367 - JR, REMAINDER OF THE FARM BARENDSHOEK 630 - JR, REMAINDER PORTION 127 OF THE FARM DONKERHOEK 365 - JR AS INTENDED BY PUBLICATION THEREOF IN THE PROVINCIAL GAZETTE AND SHOWN IN DETAIL ON PLANS PRS 86/153/10V(1)

FILE NO. 12/1/8/1-K54

CO-ORDINATE LIST WG 29° CONST. Y= +/- 0.00 X= +2 800 000.00

L1	+56 741.156	+51 435.382	L25	+56 762.470	+51 620.790	XL1	+56 771.233	+51 629.111
L1R1	+56 733.772	+51 436.430	L26	+56 741.020	+51 484.378			



REFERENCE

ROAD PROCLAIMED  EXISTING ROAD 

THE FIGURES : (1) DR1-DR6, DR1.
(2) DR7-DR11, DR7.

REPRESENTS THE PROCLAMATION OF ACCESS ROADS TO PROVINCIAL ROAD K22 OVER REMAINDER OF PORTIONS 8 & 9 OF THE FARM DONKERHOEK 370 - JR & PORTION 3 & REMAINDER OF THE FARM BARENDSHOEK 630 - JR AS INTENDED BY PUBLICATION THEREOF IN THE PROVINCIAL GAZETTE AND SHOWN IN DETAIL ON PLANS PRS 90/144/2V(1)

FILE NO. 12/1/8/1-K22

CO-ORDINATE LIST WG 29° CONST. Y= +/- 0.00 X= +2 800 000.00

DR1	+57 346.949	+51 014.501	DR5	+57 384.917	+51 164.064	DR9	+56 966.144	+51 188.660
DR2	+57 331.684	+51 019.701	DR6	+57 376.808	+51 159.253	DR10	+57 071.888	+51 152.453
DR3	+57 361.437	+51 163.934	DR7	+57 073.836	+51 134.874	DR11	+57 080.555	+51 156.881
DR4	+57 356.155	+51 172.829	DR8	+56 986.707	+51 164.707			

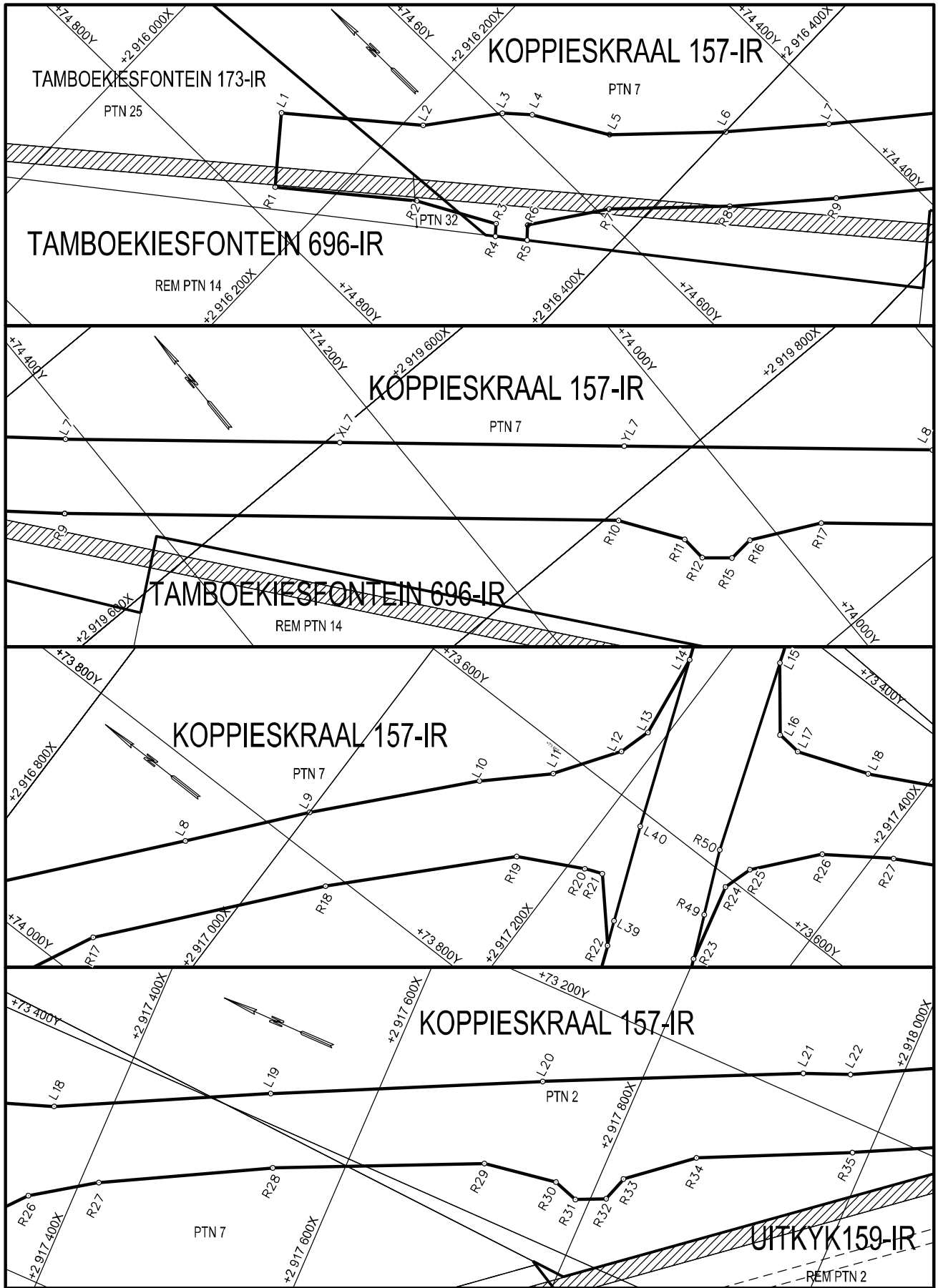
PROCLAMATION 20 OF 2020**PROCLAMATION OF K133 INTERSECTION WITH K148 IN TERMS OF
GAUTENG TRANSPORT INFRASTRUCTURE ACT. 2001, ACT 8 OF 2001
("THE ACT")**

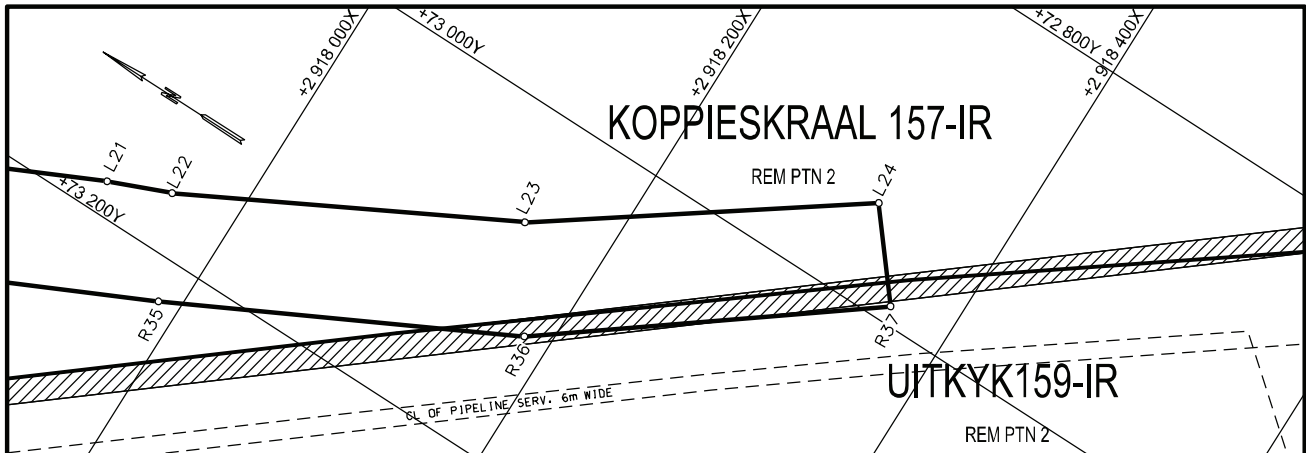
In terms of section 11(1)(b) of the Gauteng Transport Infrastructure Act, 2001 (Act No. 8 of 2001), the MEC responsible for provincial roads, hereby proclaims that provincial road K133 intersection with K148, exists on the land as described and indicated by the figures on the accompanying sketch plan.

In terms of section 23(6) of the aforementioned act it is hereby stated that plan PRS93/47/1V – 3V which indicate the land affected by the provincial road in detail, is available for inspection at the Plan room of the Department Roads and Transport, 1215 Nico Smit street, Koedoespoort, Pretoria, during office hours.

Reference: 2/1/1/2/3/1-K133

**MEC Resolution: 001
Dated 31/01/2020**





REFERENCE

ROAD PROCLAIMED 

EXISTING ROAD 

THE FIGURES : (1) L1-L7, XL7, YL7, L8-L14, L40, L39, R22-R15, R12-R1, L1.
 (2) L15-L24, R37-R23, R49, R50, L15.

REPRESENTS THE PROCLAMATION OF THE PORTION CONCERNED OF PROVINCIAL ROAD K133 OVER PORTIONS 25 & 32 OF THE FARM TAMBOEKIESFONTEIN 173- IR, PORTIONS 2 & 7 OF THE FARM KOPPIESKRAAL 157-IR & REMAINDER OF THE FARM UITKYK 159-IR AS INTENDED BY PUBLICATION THEREOF IN THE PROVINCIAL GAZETTE AND SHOWN IN DETAIL ON PLANS PRS 93/47/1V - 3V

FILE NO. 1/1/12/3/1-K133

KOÖRDINATE LYS/CO-ORDINATE LIST WG 29° KONST./CONST. Y= +/- 0.00 X= +2 800 000.00

L1	+74 726.773	+19 120.039	L24	+72 941.485	+21 322.363	R18	+73 812.412	+20 048.268
L2	+74 651.206	+19 213.257	L39	+73 687.316	+20 259.017	R19	+73 694.765	+20 161.107
L3	+74 597.618	+19 254.253	L40	+73 611.460	+20 228.653	R20	+73 667.893	+20 212.988
L4	+74 580.934	+19 273.319	XL7	+74 236.040	+19 608.224	R21	+73 662.185	+20 227.229
L5	+74 547.527	+19 331.693	YL7	+74 052.900	+19 763.336	R22	+73 707.035	+20 267.178
L6	+74 477.650	+19 400.782	R1	+74 774.935	+19 159.081	R23	+73 671.659	+20 331.546
L7	+74 412.615	+19 458.672	R2	+74 700.145	+19 252.929	R24	+73 607.736	+20 316.512
L8	+73 854.498	+19 931.373	R3	+74 667.290	+19 314.335	R25	+73 583.724	+20 324.012
L9	+73 771.687	+20 000.200	R4	+74 675.334	+19 321.272	R26	+73 536.435	+20 364.643
L10	+73 663.965	+20 097.890	R5	+74 659.073	+19 342.696	R27	+73 502.657	+20 414.725
L11	+73 621.144	+20 143.616	R6	+74 649.731	+19 334.401	R28	+73 432.552	+20 544.180
L12	+73 571.480	+20 178.103	R7	+74 592.326	+19 374.553	R29	+73 357.523	+20 706.215
L13	+73 545.406	+20 186.244	R8	+74 520.000	+19 446.064	R30	+73 347.394	+20 767.748
L14	+73 475.985	+20 177.352	R9	+74 452.686	+19 505.983	R31	+73 354.166	+20 788.608
L15	+73 431.644	+20 239.441	R10	+74 096.023	+19 808.062	R32	+73 343.109	+20 812.140
L16	+73 479.271	+20 276.025	R11	+74 062.984	+19 855.701	R33	+73 322.249	+20 818.912
L17	+73 481.148	+20 296.218	R12	+74 061.233	+19 876.841	R34	+73 281.402	+20 868.222
L18	+73 459.685	+20 354.684	R15	+74 042.156	+19 892.999	R35	+73 224.465	+20 987.048
L19	+73 376.442	+20 517.806	R16	+74 021.015	+19 891.247	R36	+73 123.475	+21 184.525
L20	+73 275.195	+20 723.881	R17	+73 965.535	+19 918.579	R37	+72 989.649	+21 361.405
L21	+73 180.733	+20 922.571	R49	+73 636.953	+20 316.221	R50	+73 586.105	+20 293.899
L22	+73 165.636	+20 959.406						
L23	+73 065.869	+21 148.392						

Printed by the Government Printer, Bosman Street, Private Bag X85, Pretoria, 0001,
for the **Gauteng Provincial Administration**, Johannesburg.

Contact Centre Tel: 012-748 6200. eMail: info.egazette@gpw.gov.za
Publications: Tel: (012) 748 6053, 748 6061, 748 6065