

FIG. 1

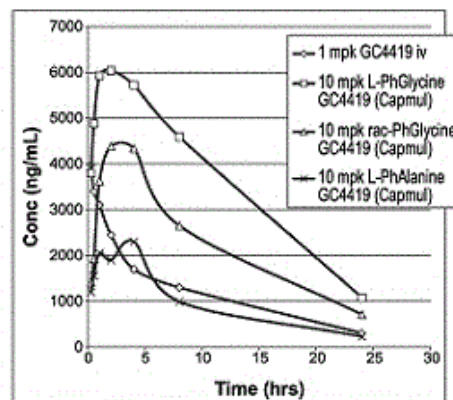
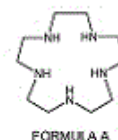


FIG. 1



21: 2018/01546. 22: 2018/03/06. 43: 2020/05/26
 51: C07F
 71: GALERA LABS, LLC
 72: KEENE, JEFFERY L, SCHALL, OTTO F, RILEY, DENNIS P

33: US 31: 62/203,761 32: 2015-08-11

54: PENTAAZA MACROCYCLIC RING COMPLEXES POSSESSING ORAL BIOAVAILABILITY

00: -

Aspects of the present disclosure relate to compounds which have enhanced oral bioavailability. A transition metal complex includes a transition metal coordinated by a macrocycle comprising the pentaaza 15-membered macrocyclic ring corresponding to Formula A and two axial ligands having the formula $-OC(O)X_1$. (Formula A) each of the two axial ligands has the formula $-OC(=O)X_1$ wherein each X_1 is independently substituted or unsubstituted phenyl or $-C(-X_2)(-X_3)(-X_4)$; each X_2 is independently substituted or unsubstituted phenyl, or substituted or unsubstituted alkyl; each X_3 is independently hydrogen, hydroxyl, alkyl, amino, $-X_5C(=O)R_{13}$ where X_5 is NH or O, and R_{13} is C_1-C_{18} alkyl, substituted or unsubstituted aryl or C_1-C_{18} aralkyl, or $-OR_{14}$, where R_{14} is C_1-C_{18} alkyl, substituted or unsubstituted aryl or C_1-C_{18} aralkyl, or together with X_4 is $(=O)$; and each X_4 is independently hydrogen or together with X_3 is $(=O)$.

21: 2018/01654. 22: 2018/03/09. 43: 2020/05/26
 51: F16B

71: VÄLINGE INNOVATION AB
 72: DERELÖV, PETER, NILSSON, MATS
 33: SE 31: 1551211-4 32: 2015-09-22

54: PANELS COMPRISING A MECHANICAL LOCKING DEVICE AND AN ASSEMBLED PRODUCT COMPRISING THE PANELS

00: -

A set of panels, preferably for a furniture product, comprising a panel (6) with a first main plane and an adjacent panel (4) with a second main plane, wherein the panel and the adjacent panel are provided with an angleable locking device (60) for locking a first edge of the panel (6) to a second edge of the adjacent panel (4). The first main plane is essentially perpendicular to the second main plane. The angleable locking device comprises an edge groove (21) at the first edge and a tongue groove (10) at the second edge (22). The edge groove (21) comprises a flexible tongue (30) arranged in an insertion groove (20) at a first side of the edge groove (21). Said flexible tongue is configured to cooperate with the tongue groove (10) for locking together the first and the second edges in a first direction which is perpendicular to the first main plane. The angleable locking device further comprises contact surfaces (96, 95) between the edge groove (21) and the second edge (22) at the first side and at a second side, respectively, of the edge groove (21) for locking together the first and the