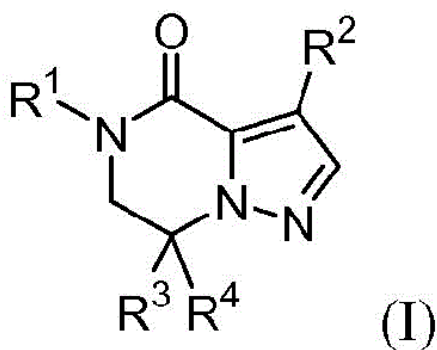


21: 2015/08858 22: 2015/12/03 43: 2018/06/04
 51: A61K; A61P; C07D
 71: Janssen Pharmaceutica N.V.
 72: VAN GOOL, Michiel Luc Maria, ALONSO-DE DIEGO, Sergio-Alvar, CID-NÚÑEZ, José Maria, DELGADO-GONZÁLEZ, Oscar, DECORTE, Annelies Marie Antonius, MACDONALD, Gregor James, MEGENS, Antonius Adrianus Hendrikus Petrus, TRABANCO-SUÁREZ, Andrés Avelino, GARCÍA-MOLINA, Aránzazu, ANDRÉS-GIL, José Ignacio
 33: EP(BE) 31: 13170447.0 32: 2013/06/04
54: 6,7-DIHYDROPYRAZOLO[1,5-a]PYRAZIN-4(5H)-ONE COMPOUNDS AND THEIR USE AS NEGATIVE ALLOSTERIC MODULATORS OF MGLUR2 RECEPTORS

00: -
 The present invention relates to novel 6,7-dihydropyrazolo[1,5-a]pyrazin-4(5H)-one derivatives of Formula (I) as negative allosteric modulators (NAMs) of the metabotropic glutamate receptor subtype 2 ("mGluR2"). The invention is also directed to pharmaceutical compositions comprising such compounds, to processes for preparing such compounds and compositions, and to the use of such compounds and compositions for the prevention or treatment of disorders in which the mGluR2 subtype of metabotropic receptors is involved, especially CNS disorders.



21: 2016/00487 22: 2016/01/22 43: 2018/06/19
 51: C10J B65G
 71: GAS TECHNOLOGY INSTITUTE
 72: SAUNDERS, Timothy
 33: US 31: 61/840,392 32: 2013/06/27

54: PARTICULATE PUMP WITH ROTARY DRIVE AND INTEGRAL CHAIN

00: -
 A particulate pump includes a posimetric rotary drive that has a hub affixed to a pair of discs. The posimetric rotary drive and chain together provides a working surface for a coal plug against a wall. A chain has a plurality of overlapping links and is integral with the hub.

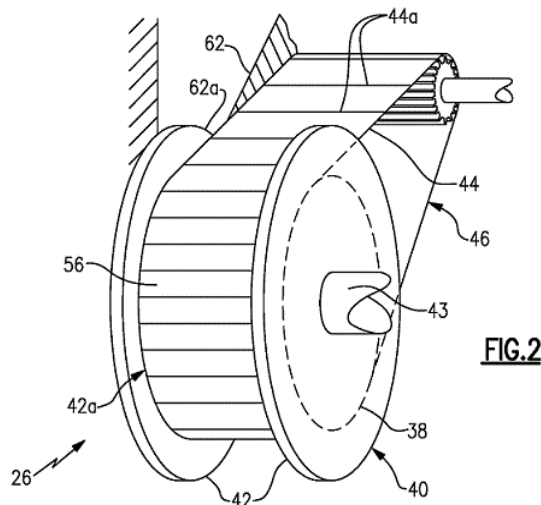


FIG.2

21: 2016/00576 22: 2016/01/26 43: 2018/05/28
 51: B61D
 71: TRANSNET SOC LIMITED
 72: TSELE, Molifi Ciwitt, NIEWOUDT, Daniel Johannes, MASEKO, Njingane Vincent, CRONJE, Jan Abraham,
54: A RAIL WAGON

00: -
 The invention relates to a rail wagon comprising a pair of end unit assemblies, which are not constructed around a longitudinal, central main load bearing member. Each end unit assembly provides a bogie pivot point secured to draw gear and supporting a pair of bolsters. A connecting structure extends between the end unit assemblies. The connecting structure includes a pair of spaced apart longitudinal load bearing beams secured to the bolsters and extending along sides and to the ends of the wagon. The beams are connected by spaced apart cross-members and provide spaced interface points for containers along their length. The construction of the rail wagon provides for a