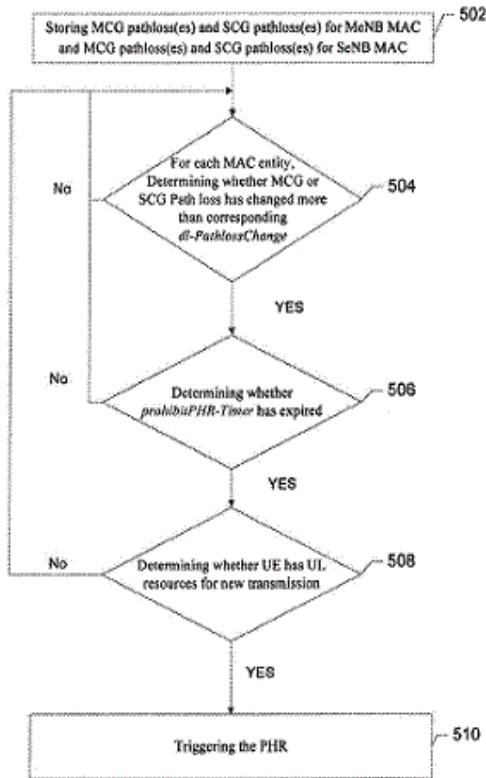


second pathloss value has changed (e.g., increased or decreased) more than the corresponding threshold value, triggering a PHR. A corresponding apparatus and computer program product are also provided.



access using coverage extension. If detected cells do not support coverage extension, the UE does not use coverage extension techniques to request access, but if all detected cells support coverage extension, the UE requests access using coverage extension techniques.

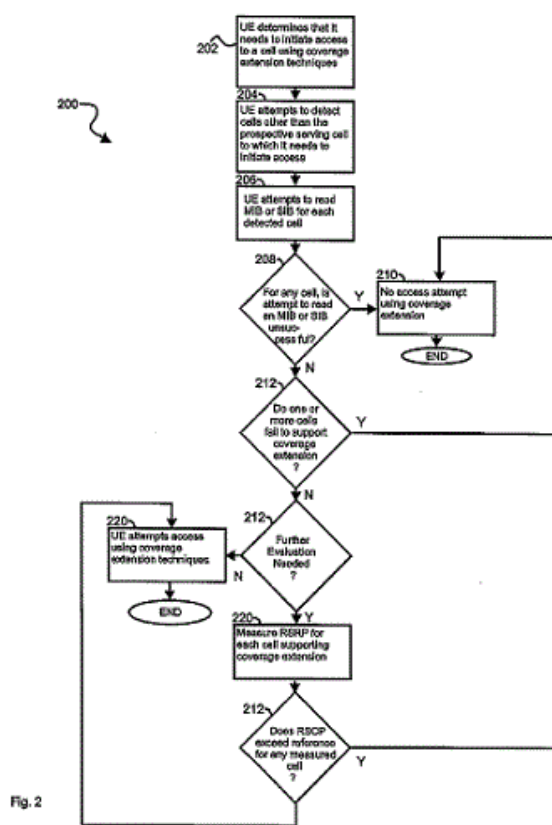


Fig. 2

21: 2016/07133 22: 2016/10/17 43: 2018/06/18
 51: H04W
 71: NOKIA SOLUTIONS AND NETWORKS OY
 72: DECARREAU, Guillaume, SEBIRE, Benoist,
 Pierre, HWANG, Woonhee, RATASUK, Rapeepat
 33: US 31: 14/220,491 32: 2014/03/20
54: METHODS AND APPARATUS FOR WIRELESS NETWORK ACCESS

00: -
 Improved mechanisms for wireless cellular access using coverage extension techniques are described. A UE needing to use coverage extension to request access to a prospective serving cell detects cells (other than the prospective serving cell) on its frequency, and then investigates each such cell (for example, by attempting to read its system information block and, if the system information block can be read, determining if the cell supports

21: 2016/07299 22: 2014/04/22 43: 2018/06/19
 51: A61K; A61Q
 71: CREATIVE NAIL DESIGN, INC.
 72: VALIA, DAVID, ELLIS, JAMIE
 33: US 31: 61/814,691 32: 2013/04/22
54: NAIL COATINGS HAVING ENHANCED ADHESION

00: -
 Adhesion of a composition for nail coatings be improved by addition of a polyhedral oligomeric silsesquioxane (POSS). Nail coating compositions that benefit from the addition of a POSS include enamels, reactive composition such as those containing acrylates, solventless compositions and water-based compositions.

21: 2016/07652 22: 2016/11/07 43: 2018/02/01