

**IMPORTANT NOTICE**

The Government Printing Works will not be held responsible for faxed documents not received due to errors on the fax machine or faxes received which are unclear or incomplete. Please be advised that an "OK" slip, received from a fax machine, will not be accepted as proof that documents were received by the GPW for printing. If documents are faxed to the GPW it will be the sender's responsibility to phone and confirm that the documents were received in good order.

Furthermore the Government Printing Works will also not be held responsible for cancellations and amendments which have not been done on original documents received from clients.

**CONTENTS****INHOUD**

<i>No.</i>	<i>Page No.</i>	<i>Gazette No.</i>	<i>No.</i>	<i>Bladsy No.</i>	<i>Koerant No.</i>
<b>GOVERNMENT NOTICE</b>			<b>GOEWERMENSKENNISGEWING</b>		
<b>Transport, Department of</b>			<b>Vervoer, Departement van</b>		
<i>Government Notice</i>			<i>Goewermentskennisgewing</i>		
902		South African National Roads Agency Limited and the National Roads Act (7/1998): The South African National Roads Agency Limited: Declaration amendment of National Road N11 Section 11: Amendment of Declaration No. 1137 of 2005.....	3	33628	
					902 Suid-Afrikaanse Nasionale Padagentskap Beperk en die Nasionale Paaie Wet (7/1998): Die Suid-Afrikaanse Nasionale Padagentskap Beperk: Verklaring wysiging van Nasionale Pad N11 Seksie 11: Wysiging van Verklaring No. 1137 van 2005 .....
				4	33628

---

## GOVERNMENT NOTICE

---

### DEPARTMENT OF TRANSPORT

No. 902

13 October 2010

## THE SOUTH AFRICAN NATIONAL ROADS AGENCY LIMITED

Registration No: 98/09584/06

---

### DECLARATION AMENDMENT OF NATIONAL ROAD N11 SECTION 11

AMENDMENT OF DECLARATION NO. 1137 OF 2005.

By virtue of section 40(1)(b) of the South African National Roads Agency Limited and the National Roads Act, 1998 (Act No. 7 of 1998), I hereby amend Declaration No. 1137 of 2005 Annexure paragraph (II) by substituting it, with the subjoined sheets 1 to 7 of Plan No. P769/09.

(National Road N11 Section 11: Groblersdal – Marble Hall)



---

MINISTER OF TRANSPORT

---

## GOEWERMENSKENNISGEWING

---

### DEPARTEMENT VAN VERVOER

No. 902

13 Oktober 2010

## DIE SUID-AFRIKAANSE NASIONALE PADAGENTSKAP BEPERK

Registrasie No: 98/09584/06

---

### VERKLARING WYSIGING VAN NASIONALE PAD N11 SEKSIE 11.

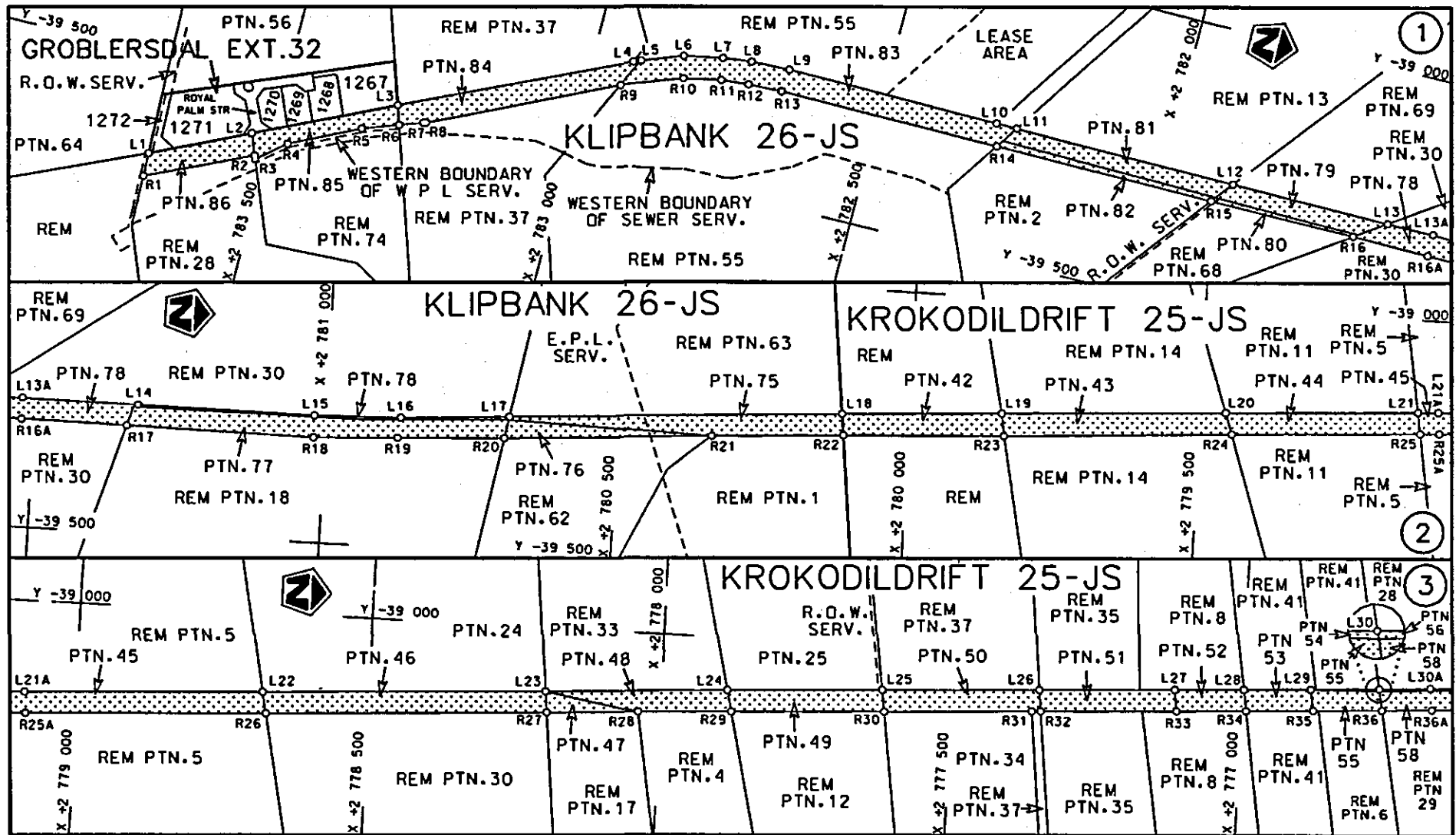
WYSIGING VAN VERKLARING NO. 1137 VAN 2005.

Kragtens Artikel 40(1)(b) van die Suid-Afrikaanse Nasionale Padagentskap Beperk en die Nasionale Paaie Wet, 1998 (Wet no.7 van 1998), wysig ek hiermee Verklaring no. 1137 van 2005 Bylae paragraaf (II) deur dit, te vervang met meegaande velle 1 tot 7 van Plan no. P769/09.

(Nasionale Pad N11 Seksie 11 Groblersdal – Marble Hall)

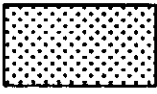


MINISTER VAN VERVOER



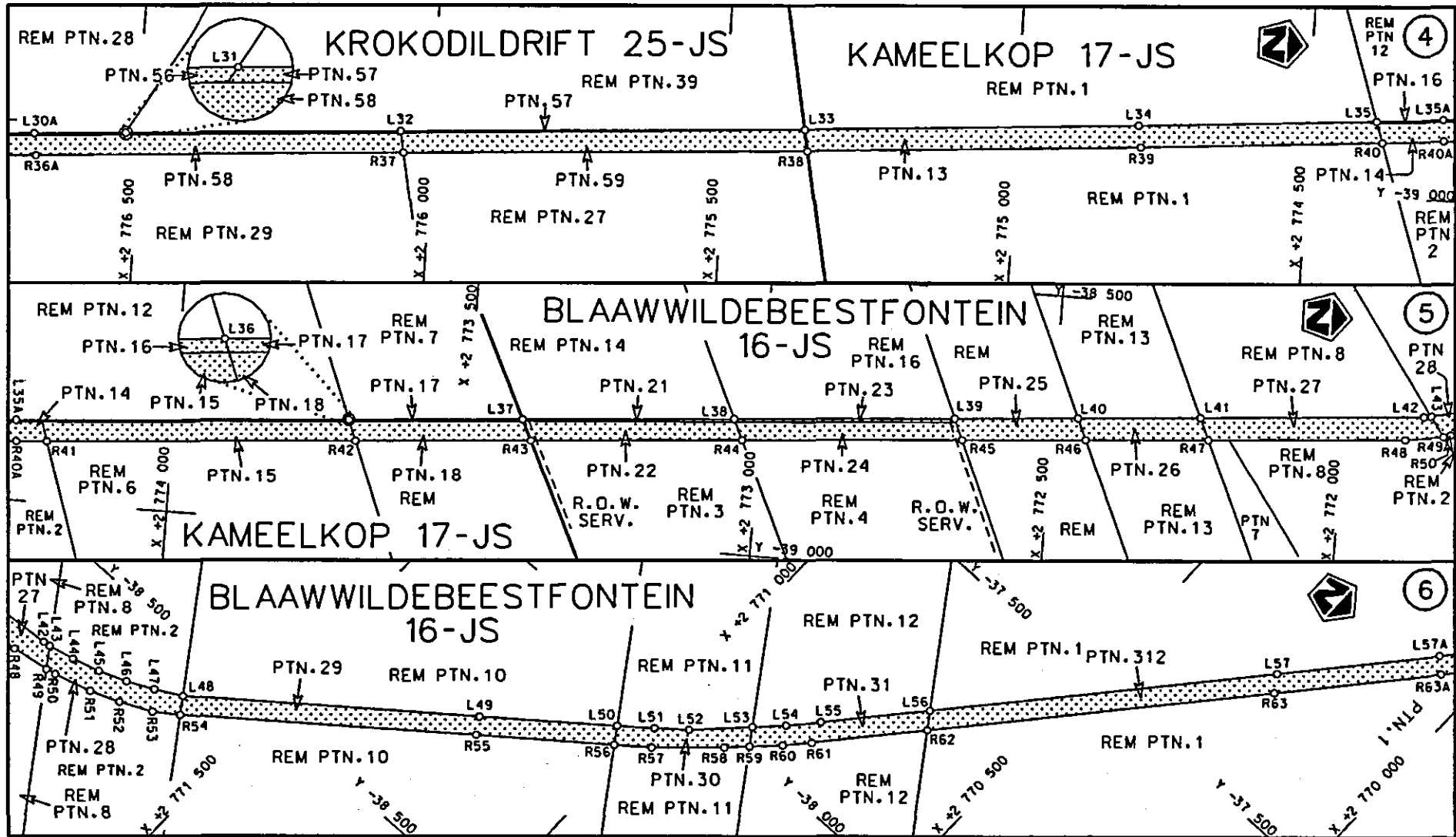
Die Suid Afrikaanse Nasionale Padagentskap Beperk  
The South African National Roads Agency Limited

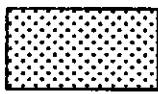
Die figuur getoon  
The figure shown

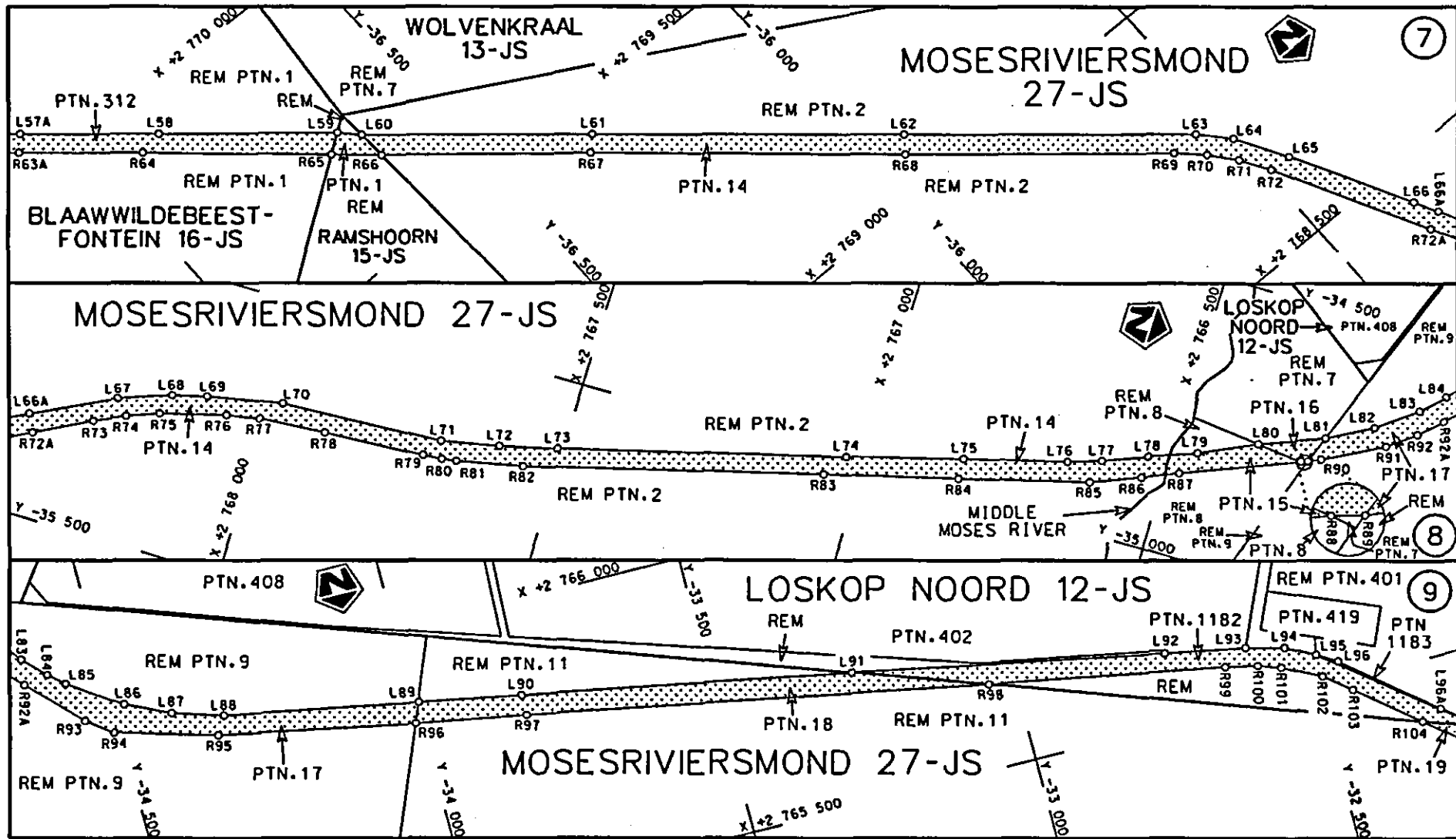


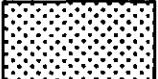
steldie padreserwe voor van 'n gedeelte  
represents the road reserve of a portion  
van Nasionale Roete N11 Seksie  
of National Route Section 11

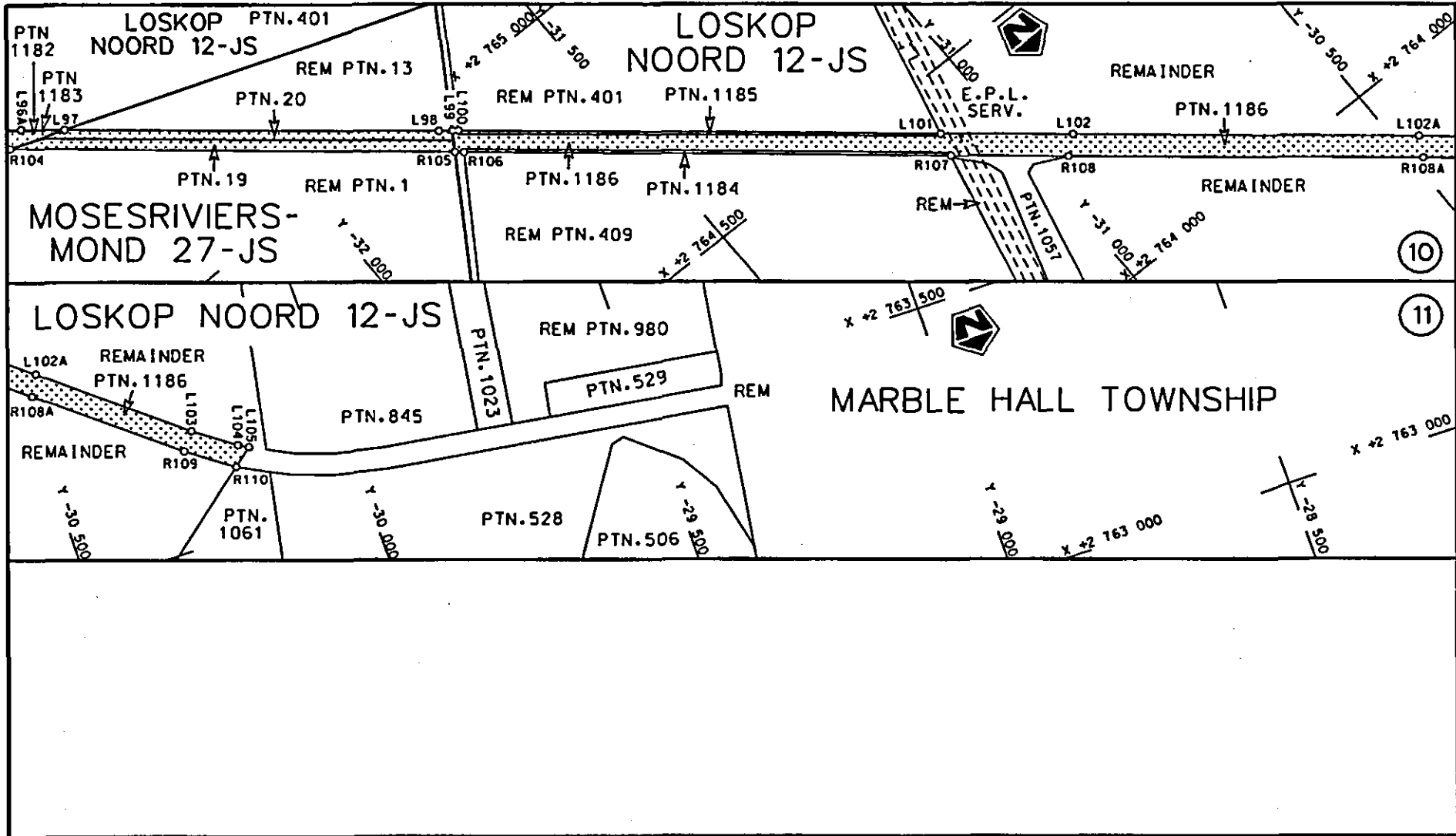
Vel Sheet 1 van 7  
of of  
Plan P769/09

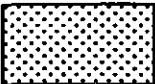


<p>Die Suid Afrikaanse Nasionale Padagentskap Beperk The South African National Roads Agency Limited</p>	<p>Die figuur getoon The figure shown</p>	 <p>steldie padreserwe voor van 'n gedeelte represents the road reserve of a portion van Nasionale Roete N11 Seksie Section 11</p>	<p>Vel Sheet 2 van 7 Plan P769/09</p>
--	---	--	---



Die Suid Afrikaanse Nasionale Padogentskap Beperk The South African National Roads Agency Limited	Die figuur getoon The figure shown	 steldie padreserwe voor van 'n gedeelte represents the road reserve of a portion van Nasionale Roete N11 Seksie of National Route N11 Section	Vel Sheet 3 van 7 of 7
Plan P769/09			11



Die Suid Afrikaanse Nasionale Padagentskap Beperk The South African National Roads Agency Limited	Die figuur getoon The figure shown		steldie podreserwe voor van 'n gedeelte represents the road reserve of a portion van Nasionale Roete of National Route	N11      Sektie Section	11	Vel Sheet	4 of	7
						Plan	P769/09	

PADRESERWE KOÖRDINATE / ROAD RESERVE CO-ORDINATES						
LINKERKANT/LEFT HAND SIDE				REGTERKANT/RIGHT HAND SIDE		
	Y	X	WG 29°		Y	X
L1	-39 674.330	2 783	696.510	R1	-39 715.650	2 783 695.330
L2	-39 596.630	2 783	533.710	R2	-39 633.460	2 783 519.410
L3	-39 487.080	2 783	304.130	R3	-39 639.560	2 783 517.040
L4	-39 313.440	2 782	931.220	R4	-39 599.270	2 783 469.920
L5	-39 308.230	2 782	918.780	R5	-39 542.470	2 783 353.530
L6	-39 282.010	2 782	849.880	R6	-39 520.450	2 783 293.320
L7	-39 269.040	2 782	783.750	R7	-39 506.510	2 783 253.890
L8	-39 263.460	2 782	734.440	R8	-39 505.390	2 783 249.900
L9	-39 261.240	2 782	668.190	R9	-39 358.620	2 782 942.190
L10	-39 264.370	2 782	299.000	R10	-39 321.340	2 782 840.650
L11	-39 264.690	2 782	263.320	R11	-39 308.140	2 782 777.000
L12	-39 268.210	2 781	877.380	R12	-39 304.010	2 782 729.620
L13	-39 270.550	2 781	601.970	R13	-39 301.780	2 782 671.620
L14	-39 273.000	2 781	322.340	R14	-39 303.320	2 782 288.720
L15	-39 275.520	2 781	019.860	R15	-39 306.020	2 781 906.770
L16	-39 271.190	2 780	872.100	R16	-39 307.530	2 781 654.180
L17	-39 259.430	2 780	686.630	R17	-39 310.660	2 781 339.810
L18	-39 223.060	2 780	115.910	R18	-39 314.050	2 781 019.630
L19	-39 206.440	2 779	841.180	R19	-39 306.930	2 780 875.900
L20	-39 183.600	2 779	455.610	R20	-39 297.440	2 780 693.490
L21	-39 164.400	2 779	125.060	R21	-39 274.440	2 780 337.700
L22	-39 140.070	2 778	681.920	R22	-39 260.200	2 780 111.870
L23	-39 112.230	2 778	198.460	R23	-39 245.950	2 779 835.570
L24	-39 093.170	2 777	886.810	R24	-39 220.810	2 779 443.440
L25	-39 077.720	2 777	620.570	R25	-39 202.000	2 779 119.140
L26	-39 062.310	2 777	350.310	R26	-39 177.750	2 778 674.560
L27	-39 048.690	2 777	117.930	R27	-39 149.340	2 778 194.620
L28	-39 041.680	2 776	998.430	R28	-39 140.000	2 778 038.050
L29	-39 034.930	2 776	883.320	R29	-39 130.970	2 777 878.160
L30	-39 027.930	2 776	765.350	R30	-39 116.220	2 777 615.220
L31	-39 011.850	2 776	521.630	R31	-39 100.720	2 777 361.370
L32	-38 982.480	2 776	052.870	R32	-39 099.860	2 777 346.230
L33	-38 939.430	2 775	362.770	R33	-39 086.610	2 777 112.900
L34	-38 898.240	2 774	791.070	R34	-39 079.120	2 776 992.620
L35	-38 866.770	2 774	382.930	R35	-39 072.470	2 776 877.090
L36	-38 813.420	2 773	702.040	R36	-39 065.240	2 776 758.470
L37	-38 789.630	2 773	406.540	R37	-39 019.430	2 776 046.120
L38	-38 760.530	2 773	045.050	R38	-38 976.500	2 775 355.990
L39	-38 730.310	2 772	667.710	R39	-38 935.490	2 774 785.110
L40	-38 712.680	2 772	456.630	R40	-38 903.240	2 774 371.180
L41	-38 695.210	2 772	247.360	R41	-38 890.940	2 774 213.420
L42	-38 662.240	2 771	855.450	R42	-38 849.610	2 773 688.120
L43	-38 661.640	2 771	851.940	R43	-38 825.770	2 773 389.550
L44	-38 651.940	2 771	807.000	R44	-38 796.600	2 773 028.770
L45	-38 638.070	2 771	759.840	R45	-38 766.920	2 772 652.330
L46	-38 619.640	2 771	712.910	R46	-38 749.860	2 772 440.600
L47	-38 597.460	2 771	668.150	R47	-38 733.200	2 772 230.660
L48	-38 573.210	2 771	624.190	R48	-38 706.110	2 771 893.420
L49	-38 258.730	2 771	226.060	R49	-38 696.210	2 771 828.200
L50	-38 110.870	2 771	041.200	R50	-38 692.890	2 771 807.410
L51	-38 070.980	2 770	991.670	R51	-38 674.120	2 771 747.140

Vel	5	Van	7	P769/09
Sheet		of		



PADRESERWE KOÖRDINATE / ROAD RESERVE CO-ORDINATES						
LINKERKANT/LEFT HAND SIDE			REGTERKANT/RIGHT HAND SIDE			
	Y	X	WG 29°		Y	X
L52	-38 032.820	2 770 945.820		R52	-38 654.520	2 771 697.210
L53	-37 955.930	2 770 869.360		R53	-38 629.020	2 771 643.260
L54	-37 914.810	2 770 828.980		R54	-38 601.240	2 771 604.800
L55	-37 870.700	2 770 788.810		R55	-38 286.170	2 771 208.140
L56	-37 728.490	2 770 664.180		R56	-38 138.700	2 771 022.200
L57	-37 276.160	2 770 269.940		R57	-38 099.230	2 770 972.430
L58	-36 884.950	2 769 930.220		R58	-38 014.760	2 770 880.700
L59	-36 654.040	2 769 732.270		R59	-37 984.370	2 770 850.030
L60	-36 625.020	2 769 702.120		R60	-37 944.400	2 770 809.620
L61	-36 327.950	2 769 443.980		R61	-37 907.370	2 770 775.830
L62	-35 925.430	2 769 093.750		R62	-37 757.040	2 770 644.400
L63	-35 547.530	2 768 766.180		R63	-37 304.560	2 770 250.760
L64	-35 503.420	2 768 717.800		R64	-36 927.260	2 769 923.020
L65	-35 452.350	2 768 631.970		R65	-36 686.910	2 769 709.630
L66	-35 342.980	2 768 430.590		R66	-36 622.850	2 769 652.860
L67	-35 252.460	2 768 252.700		R67	-36 351.500	2 769 420.970
L68	-35 220.300	2 768 165.380		R68	-35 946.820	2 769 065.820
L69	-35 204.570	2 768 107.450		R69	-35 597.780	2 768 765.580
L70	-35 180.210	2 767 981.160		R70	-35 556.620	2 768 725.990
L71	-35 165.810	2 767 704.160		R71	-35 520.820	2 768 682.940
L72	-35 145.510	2 767 606.560		R72	-35 490.520	2 768 634.210
L73	-35 121.460	2 767 509.430		R73	-35 302.330	2 768 281.970
L74	-34 992.500	2 767 032.620		R74	-35 278.360	2 768 230.760
L75	-34 937.420	2 766 838.670		R75	-35 257.700	2 768 177.470
L76	-34 891.400	2 766 666.720		R76	-35 226.860	2 768 067.310
L77	-34 872.150	2 766 610.830		R77	-35 216.750	2 768 011.570
L78	-34 842.020	2 766 537.300		R78	-35 208.610	2 767 897.870
L79	-34 811.890	2 766 457.740		R79	-35 198.360	2 767 726.220
L80	-34 766.120	2 766 362.520		R80	-35 196.050	2 767 693.490
L81	-34 723.550	2 766 254.740		R81	-35 192.190	2 767 668.850
L82	-34 680.970	2 766 179.650		R82	-35 168.360	2 767 557.440
L83	-34 630.330	2 766 114.190		R83	-35 033.540	2 767 061.050
L84	-34 594.020	2 766 076.870		R84	-34 973.490	2 766 837.180
L85	-34 567.350	2 766 053.340		R85	-34 914.280	2 766 620.020
L86	-34 481.490	2 765 993.330		R86	-34 880.420	2 766 537.590
L87	-34 406.860	2 765 957.760		R87	-34 855.540	2 766 478.040
L88	-34 321.520	2 765 930.970		R88	-34 775.040	2 766 283.550
L89	-33 995.180	2 765 868.160		R89	-34 771.350	2 766 272.000
L90	-33 821.890	2 765 834.760		R90	-34 761.640	2 766 251.050
L91	-33 265.180	2 765 728.170		R91	-34 706.950	2 766 151.070
L92	-32 737.920	2 765 623.240		R92	-34 671.750	2 766 105.860
L93	-32 600.740	2 765 597.040		R93	-34 552.620	2 765 982.530
L94	-32 536.400	2 765 580.530		R94	-34 510.360	2 765 949.500
L95	-32 486.970	2 765 554.440		R95	-34 339.580	2 765 899.990
L96	-32 453.550	2 765 533.610		R96	-34 009.530	2 765 833.070
L97	-32 248.470	2 765 361.060		R97	-33 823.120	2 765 799.380
L98	-31 756.420	2 764 954.410		R98	-33 042.640	2 765 647.810
L99	-31 738.360	2 764 940.190		R99	-32 643.130	2 765 573.670
L100	-31 730.130	2 764 933.700		R100	-32 588.580	2 765 561.670
L101	-31 094.740	2 764 406.530		R101	-32 550.370	2 765 548.370
L102	-30 920.130	2 764 262.020		R102	-32 486.040	2 765 514.640

Vel	6	Van	7	P769/09
Sheet		of		

PADRESERWE KOÖRDINATE / ROAD RESERVE CO-ORDINATES						
LINKERKANT/LEFT HAND SIDE				REGTERKANT/RIGHT HAND SIDE		
	Y	X	WG 29°		Y	X
L103	-30 244.760	2 763 701.840		R103	-32 441.450	2 765 478.410
L104	-30 177.310	2 763 652.430		R104	-32 340.940	2 765 394.450
L105	-30 160.880	2 763 642.900		R105	-31 758.650	2 764 908.060
				R106	-31 746.840	2 764 898.430
				R107	-31 105.980	2 764 365.190
				R108	-30 951.010	2 764 236.360
				R109	-30 267.780	2 763 671.960
				R110	-30 192.260	2 763 617.260

Vel	7	Van	7	P769/09
Sheet		of		









Printed by and obtainable from the Government Printer, Bosman Street, Private Bag X85, Pretoria, 0001  
Publications: Tel: (012) 334-4508, 334-4509, 334-4510  
Advertisements: Tel: (012) 334-4673, 334-4674, 334-4504  
Subscriptions: Tel: (012) 334-4735, 334-4736, 334-4737  
Cape Town Branch: Tel: (021) 465-7531

Gedruk deur en verkrygbaar by die Staatsdrukker, Bosmanstraat, Privaatsak X85, Pretoria, 0001  
Publikasies: Tel: (012) 334-4508, 334-4509, 334-4510  
Advertensies: Tel: (012) 334-4673, 334-4674, 334-4504  
Subskripsies: Tel: (012) 334-4735, 334-4736, 334-4737  
Kaapstad-tak: Tel: (021) 465-7531