

DEPARTEMENT VAN VERVOER

NO. 328

23 MAART 2018

**DIE SUID-AFRIKAANSE NASIONALE
PADAGENTSKAP MSB BEPERK**

Registrasie No: 1998/009584/30

VERKLARING WYSIGING VAN NASIONALE PAD N2 SEKSIE 14

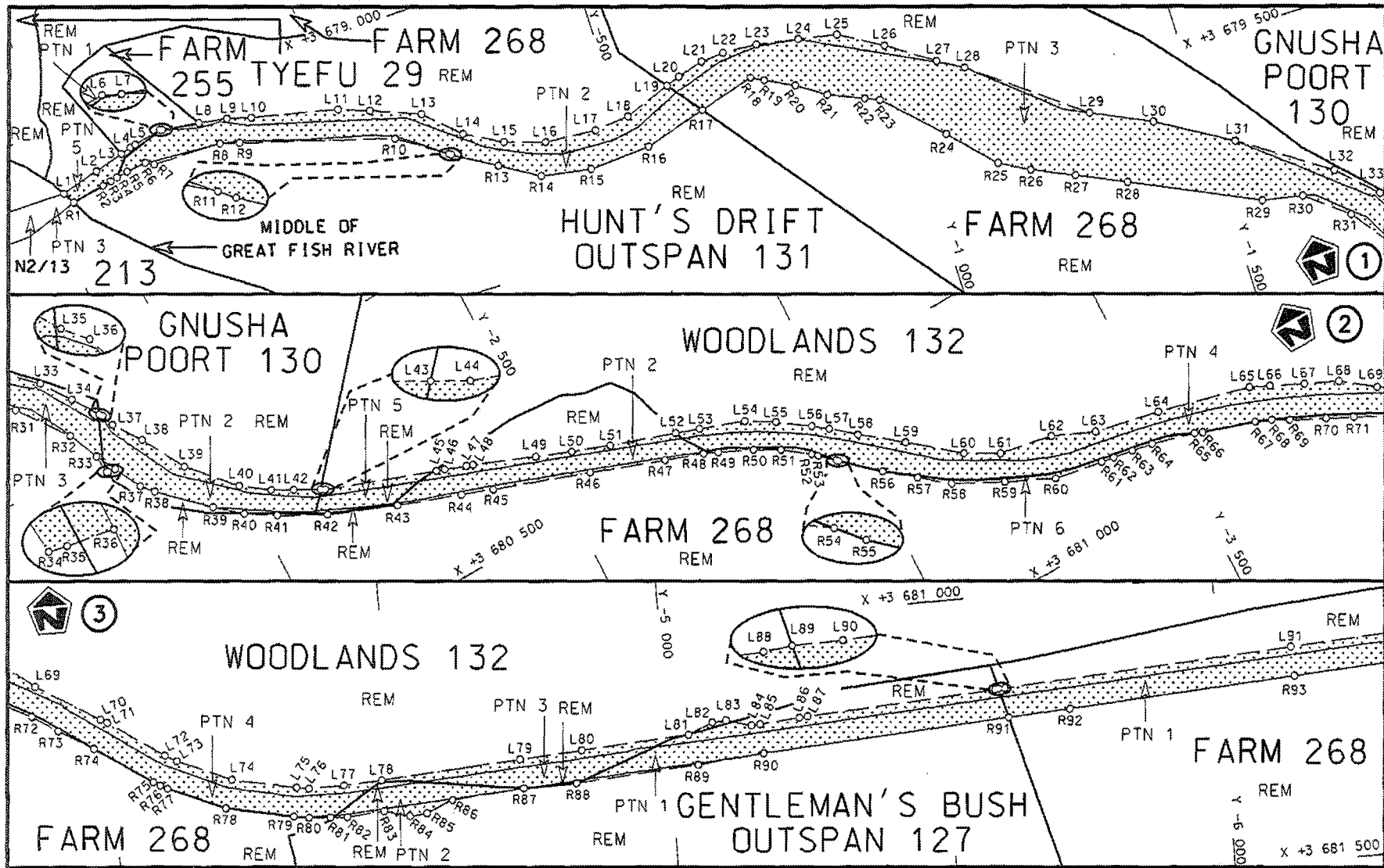
WYSIGING VAN VERKLARING No. 564 VAN 2009


Kragtens Artikel 40(1)(b) van die Wet op die Suid-Afrikaanse Nasionale Padagentskap Beperk en op Nasionale Paaie, 1998 (Wet no. 7 van 1998), wysig ek hiermee Verklaring No. 564 van 2009 deur dit in sy geheel te vervang met bygaande velle 1 tot 31 van Plan No. P899/16.

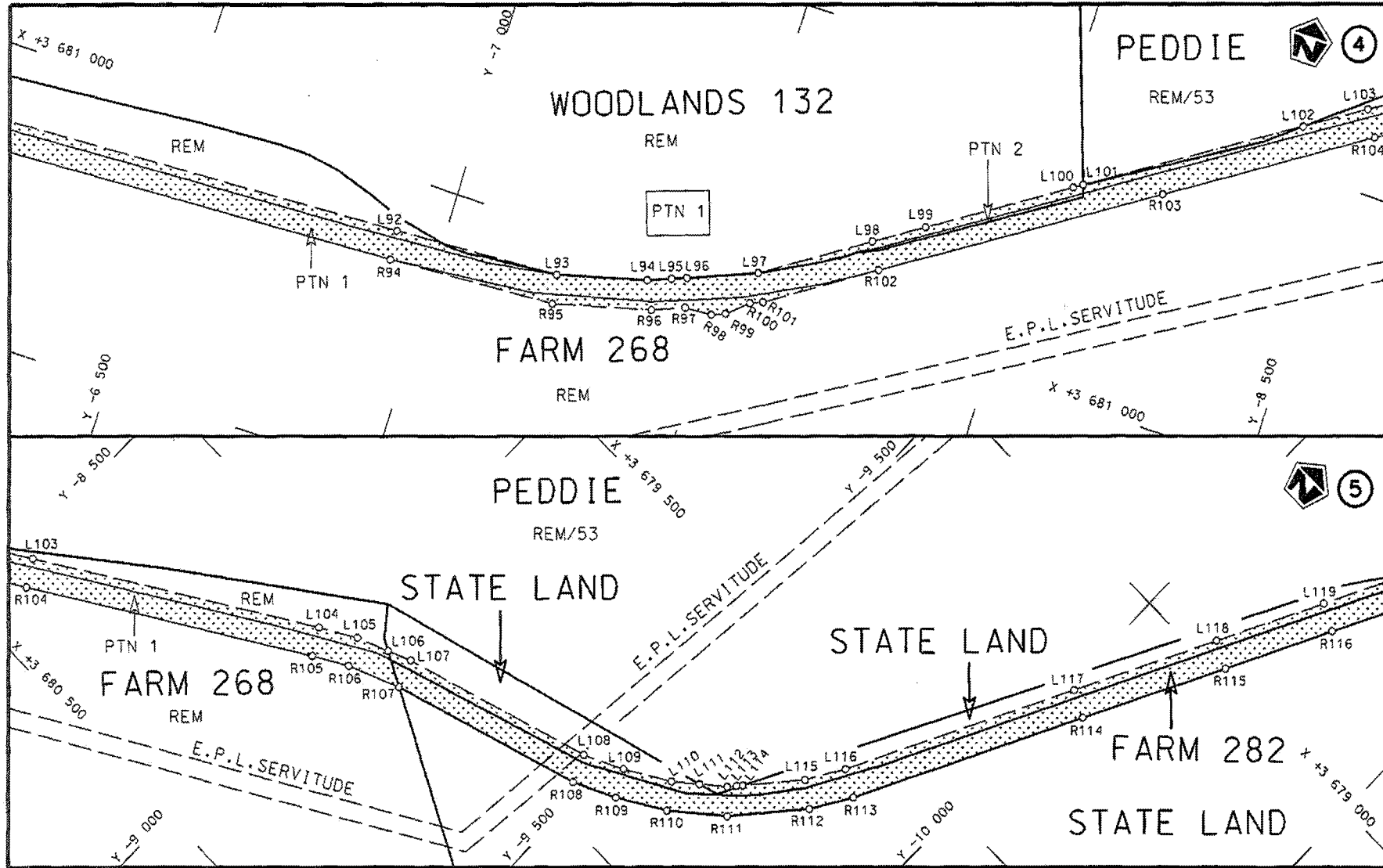
(Nasionale Pad N2 Seksie 14: Grootvisrivier - King William's Town)

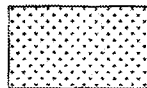


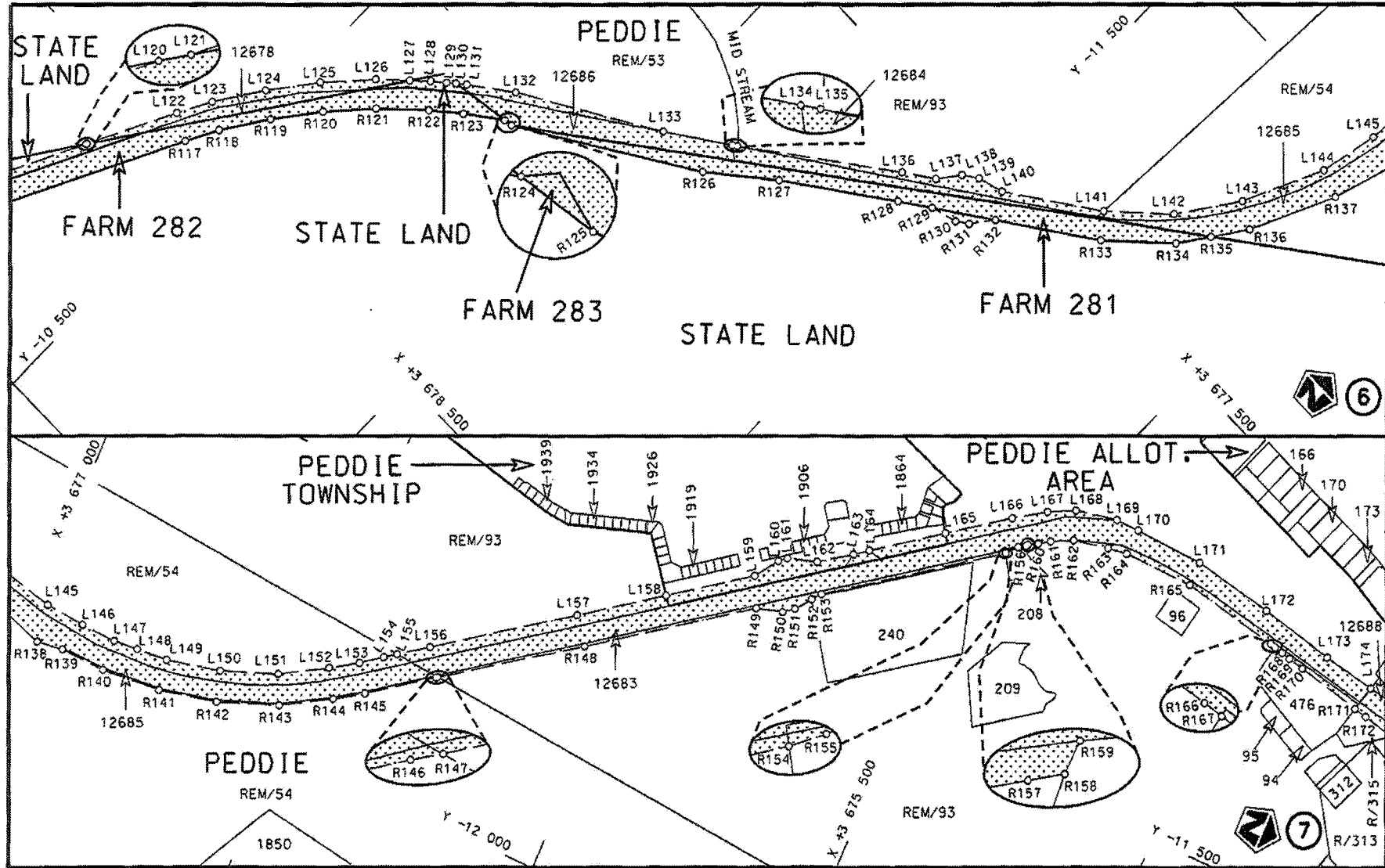
MINISTER VAN VERVOER

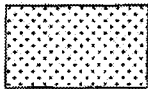


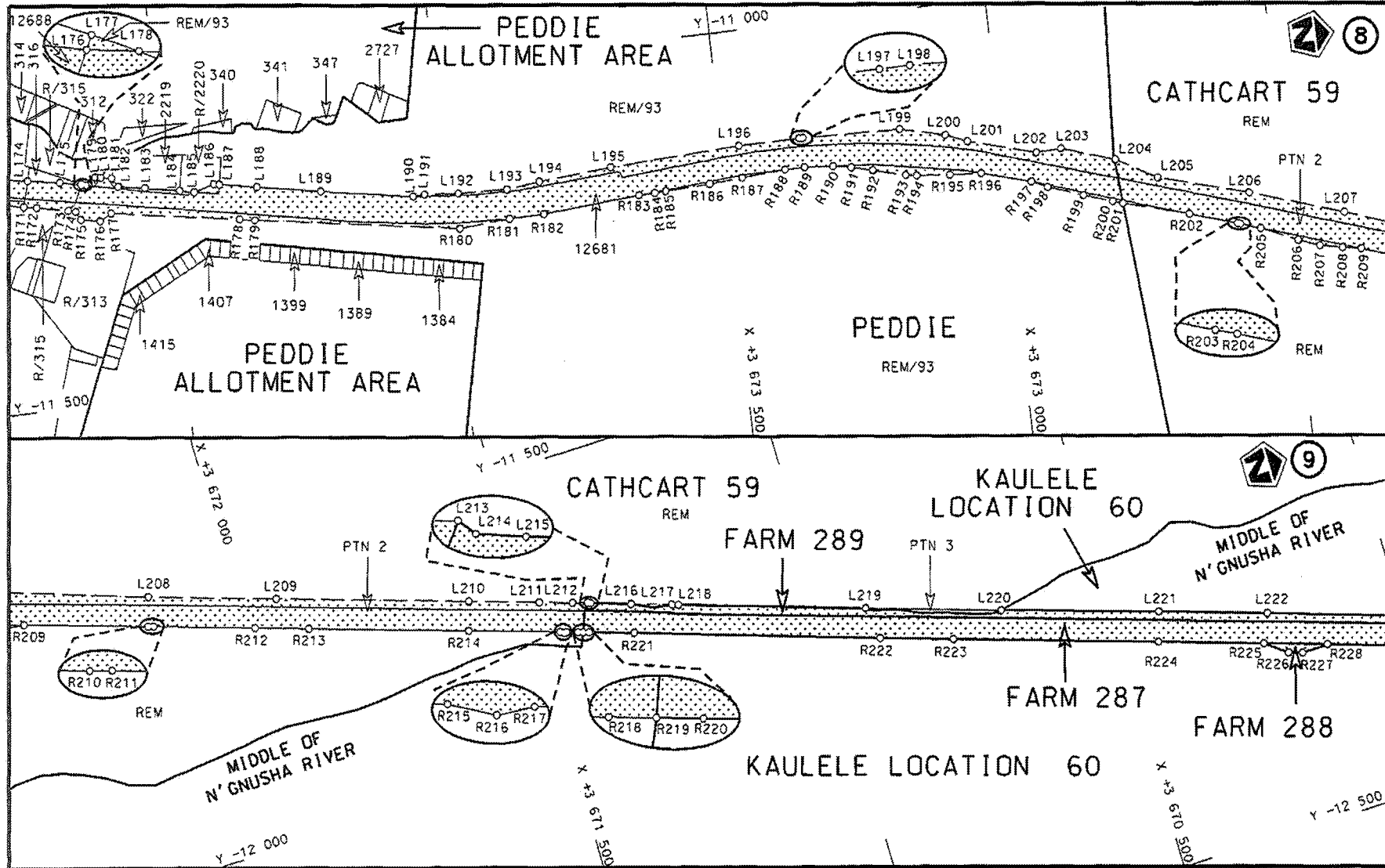
Die Suid Afrikaanse Nasionale Padagentskap MSB Bpk The South African National Roads Agency SOC Ltd	Die figuur getoon The figure shown	 steldie padreserwe voor van 'n gedeelte represents the road reserve of a portion van Nasionale Roete of National Route	Vel Sheet 1 van of 31
N2 Seksie 14			Plan P899/16

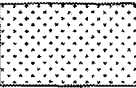


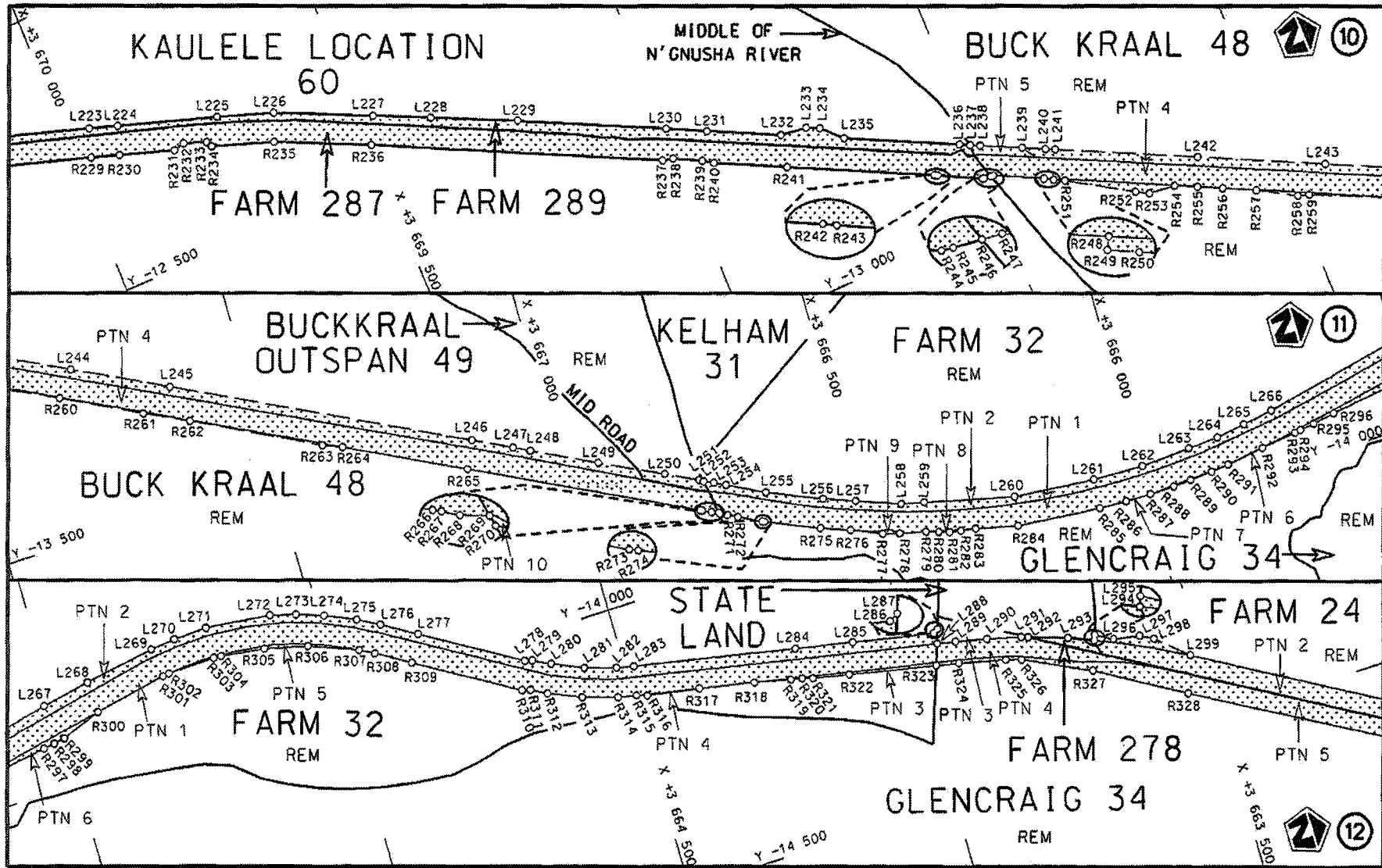
<p>Die Suid Afrikaanse Nasionale Padagentskap MSB Bpk The South African National Roads Agency SOC Ltd</p>	<p>Die figuur getoon The figure shown</p> 	<p>ste die padreserwe voor van 'n gedeelte represents the road reserve of a portion van Nasionale Roete of National Route</p> <p>N2 Seksie 14</p>	<p>Vel Sheet 2 van of 31</p> <p>Plan P899/16</p>
---	---	---	--

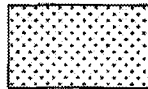


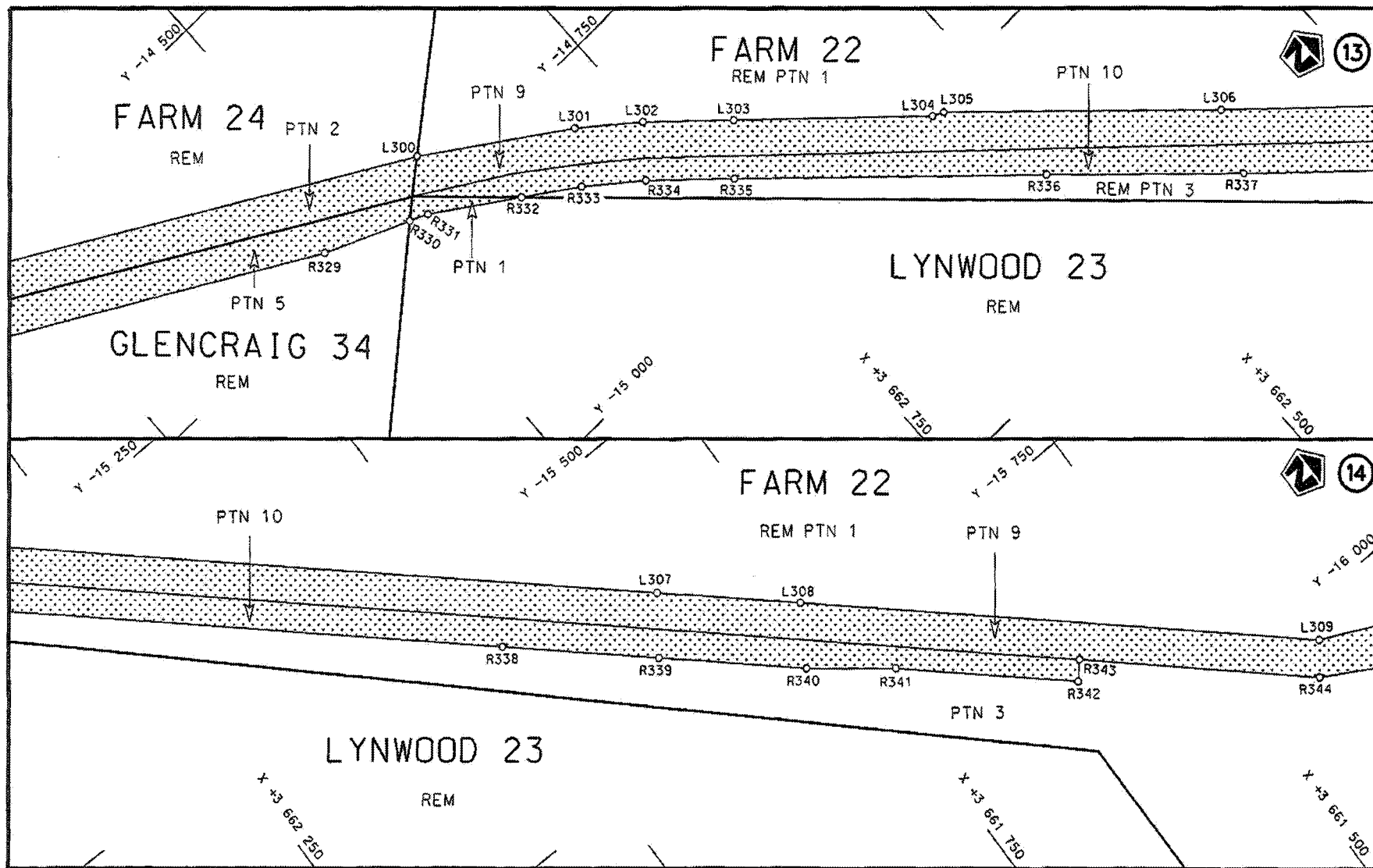
Die Suid Afrikaanse Nasionale Padagentskap MSB Bpk The South African National Roads Agency SOC Ltd	Die figuur getoon The figure shown	 steldie padreserwe voor van 'n gedeelte represents the road reserve of a portion van Nasionale Roete N2 Seksie Section 14 of National Route	Vel Sheet 3 van of 31 Plan P899/16
---	---------------------------------------	---	---------------------------------------

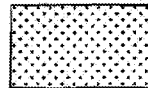


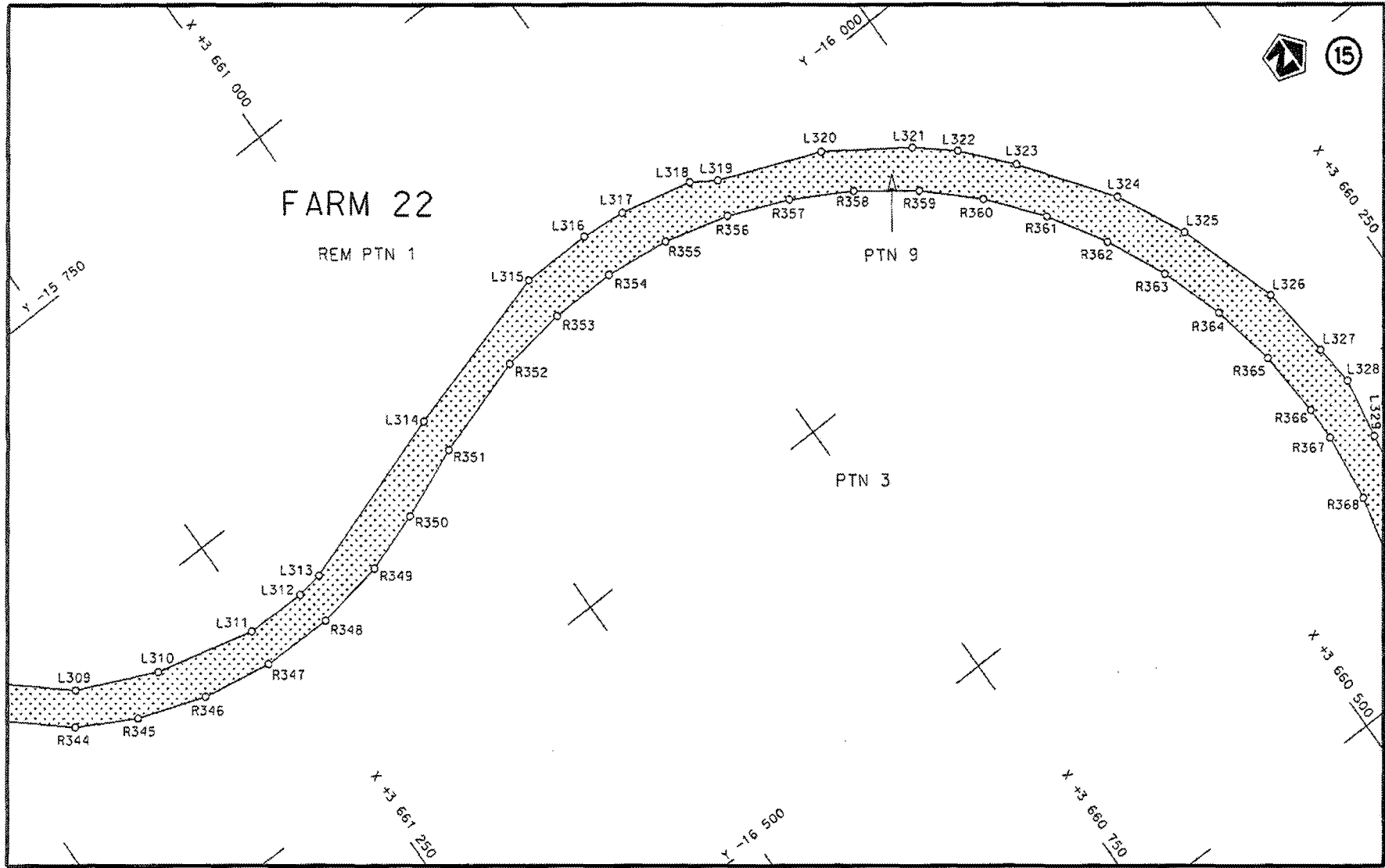
<p>Die Suid Afrikaanse Nasionale Padagentskap MSB Bpk The South African National Roads Agency SOC Ltd</p>	<p>Die figuur getoon The figure shown</p> 	<p>steldie padreserwe voor van 'n gedeelte represents the road reserve of a portion van Nasionale Roete N2 Seksie 14 of National Route Section</p>	<p>Vel Sheet 4 van 31 Plan P899/16</p>
---	---	--	--

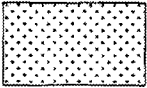


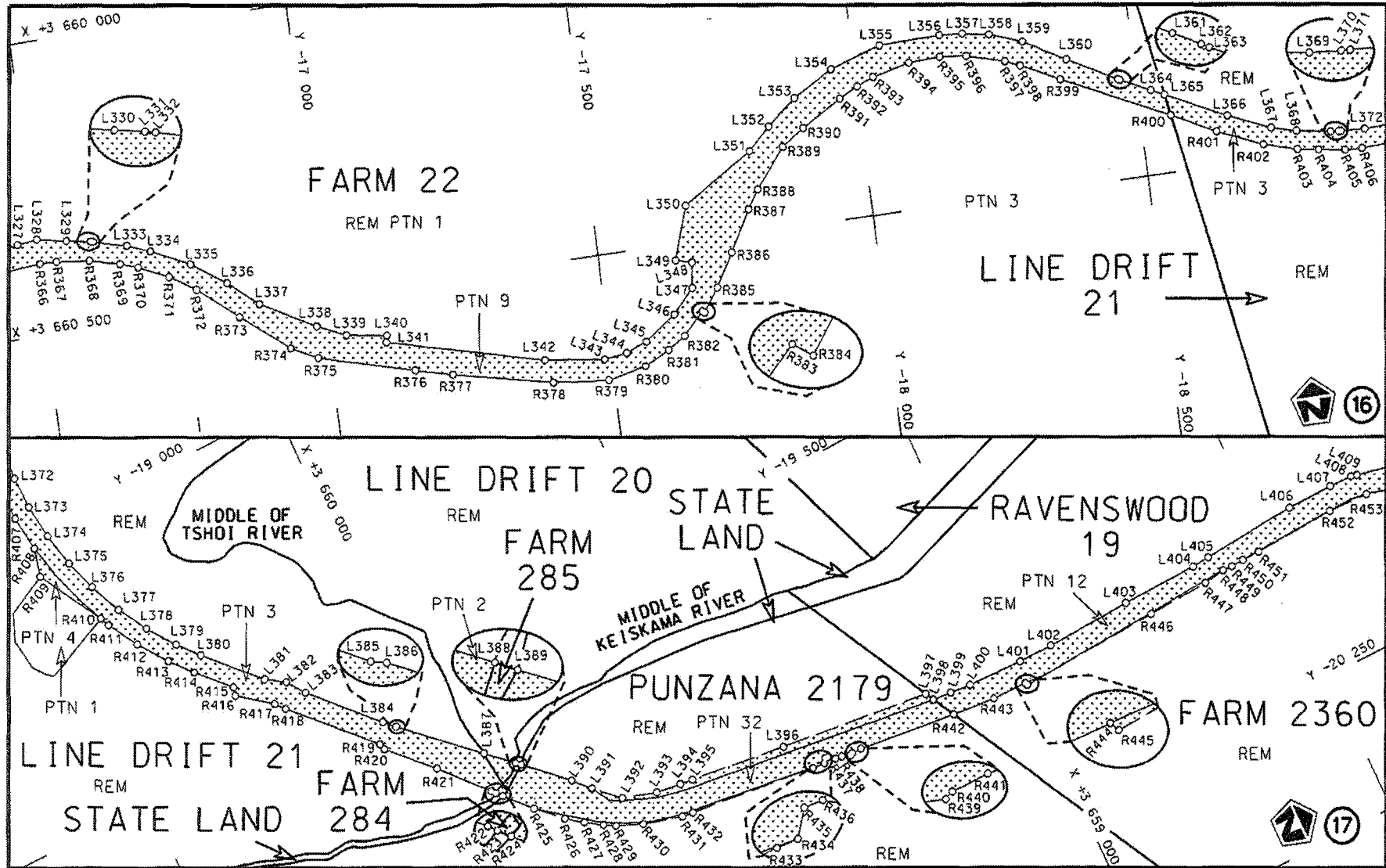
<p>Die Suid Afrikaanse Nasionale Padagentskap MSB Bpk The South African National Roads Agency SOC Ltd</p>	<p>Die figuur getoon The figure shown</p> 	<p>steldie padreserwe voor van 'n gedeelte represents the road reserve of a portion van Nasionale Roete N2 Seksie 14 of National Route Section</p>	<p>Vel Sheet 5 van 31 Plan P899/16</p>
---	---	--	--

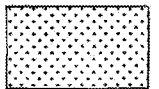


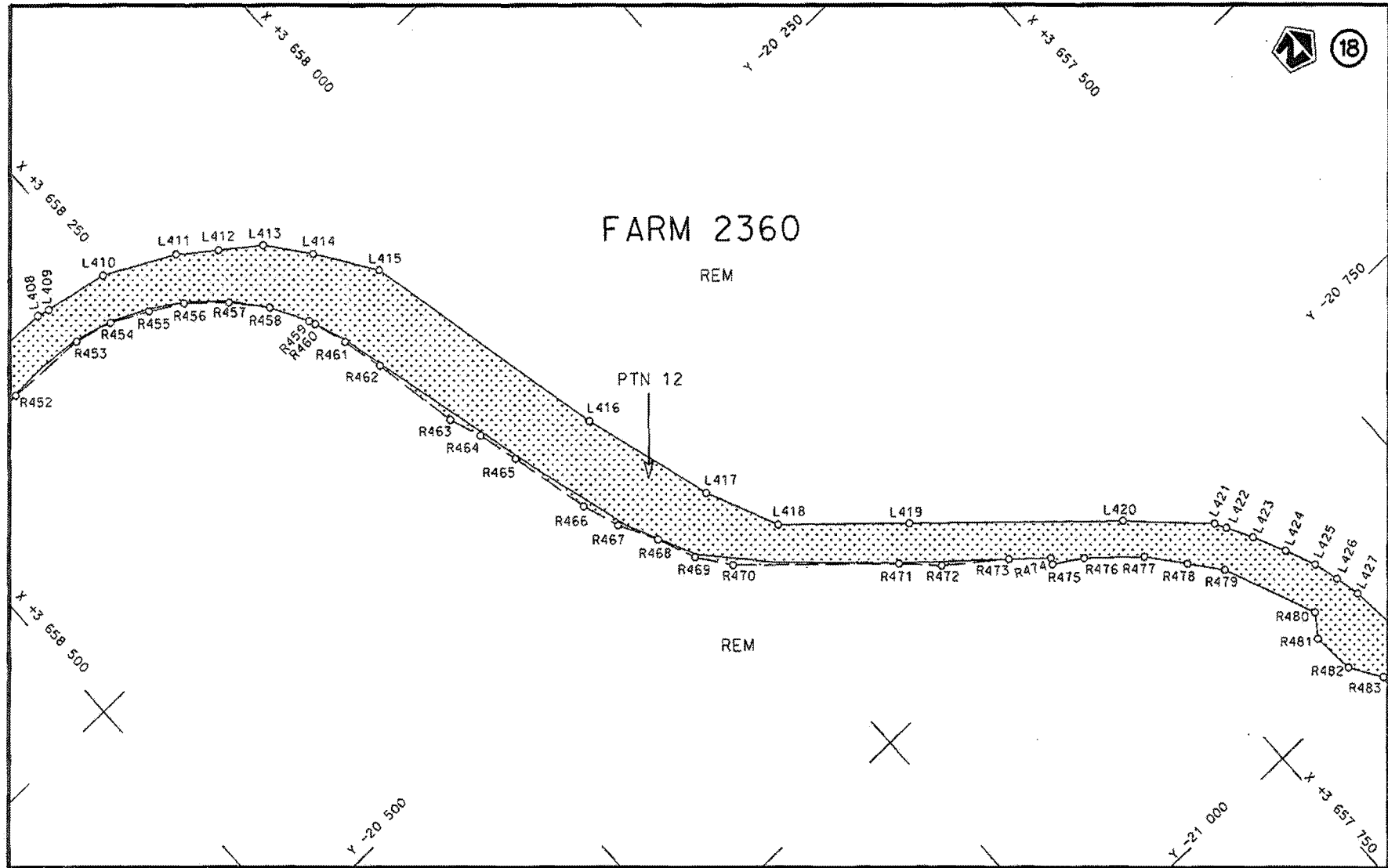
<p>Die Suid Afrikaanse Nasionale Padagentskap MSB Bpk The South African National Roads Agency SOC Ltd</p>	<p>Die figuur getoon The figure shown</p> 	<p>steldie padreserwe voor van 'n gedeelte represents the road reserve of a portion van Nasionale Roete N2 of National Route N2</p> <p>Seksie 14 Section</p>	<p>Vel Sheet 6 van of 31 Plan P899/16</p>
---	---	--	---

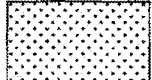


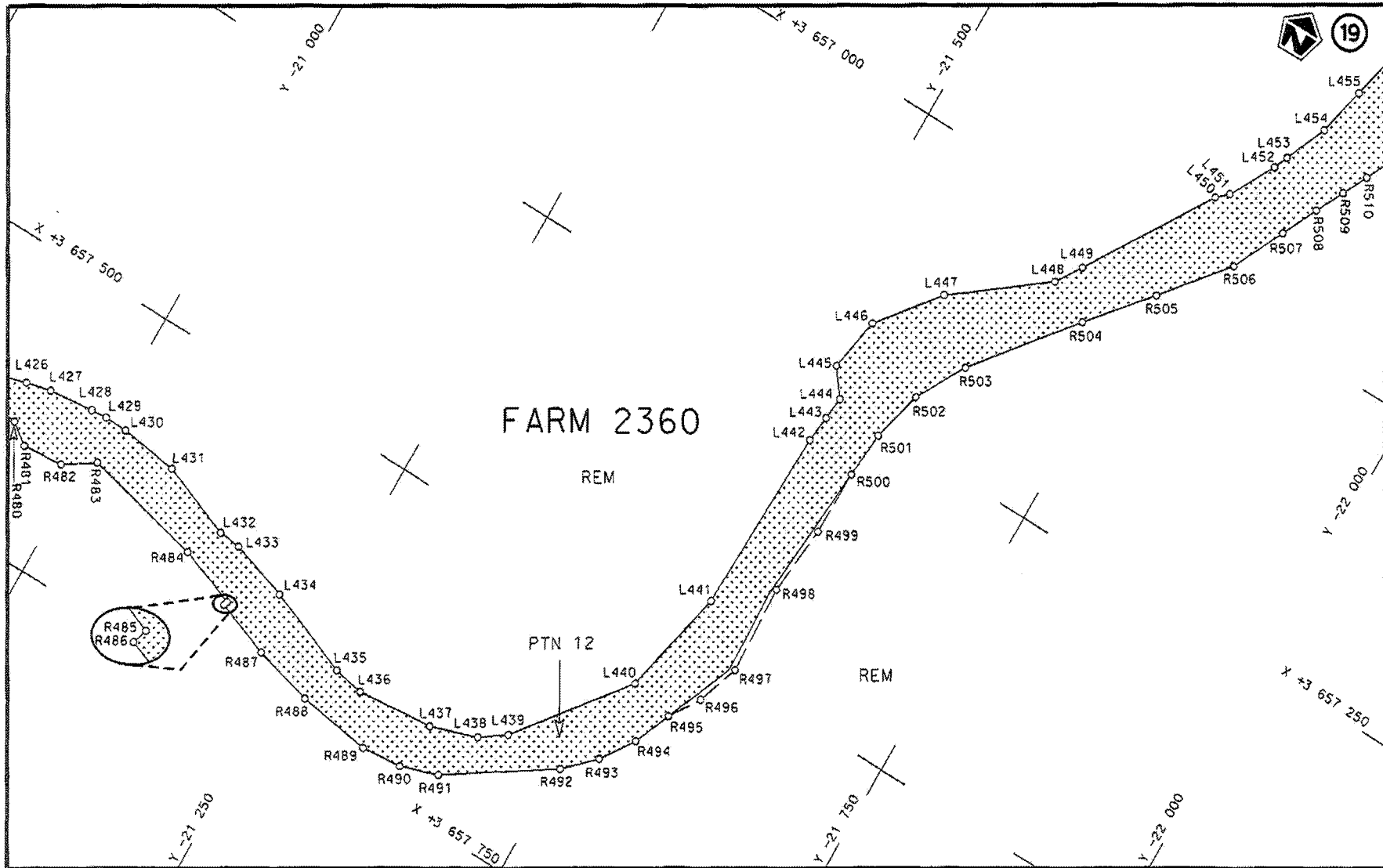
Die Suid Afrikaanse Nasionale Padagentskap MSB Bpk The South African National Roads Agency SOC Ltd	Die figuur getoon The figure shown		steldie padreserwe voor van 'n gedeelte represents the road reserve of a portion van Nasionale Roete N2 Seksie 14 of National Route Section	Vel Sheet 7 van of 31 Plan P899/16
---	---------------------------------------	---	---	---------------------------------------

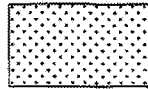


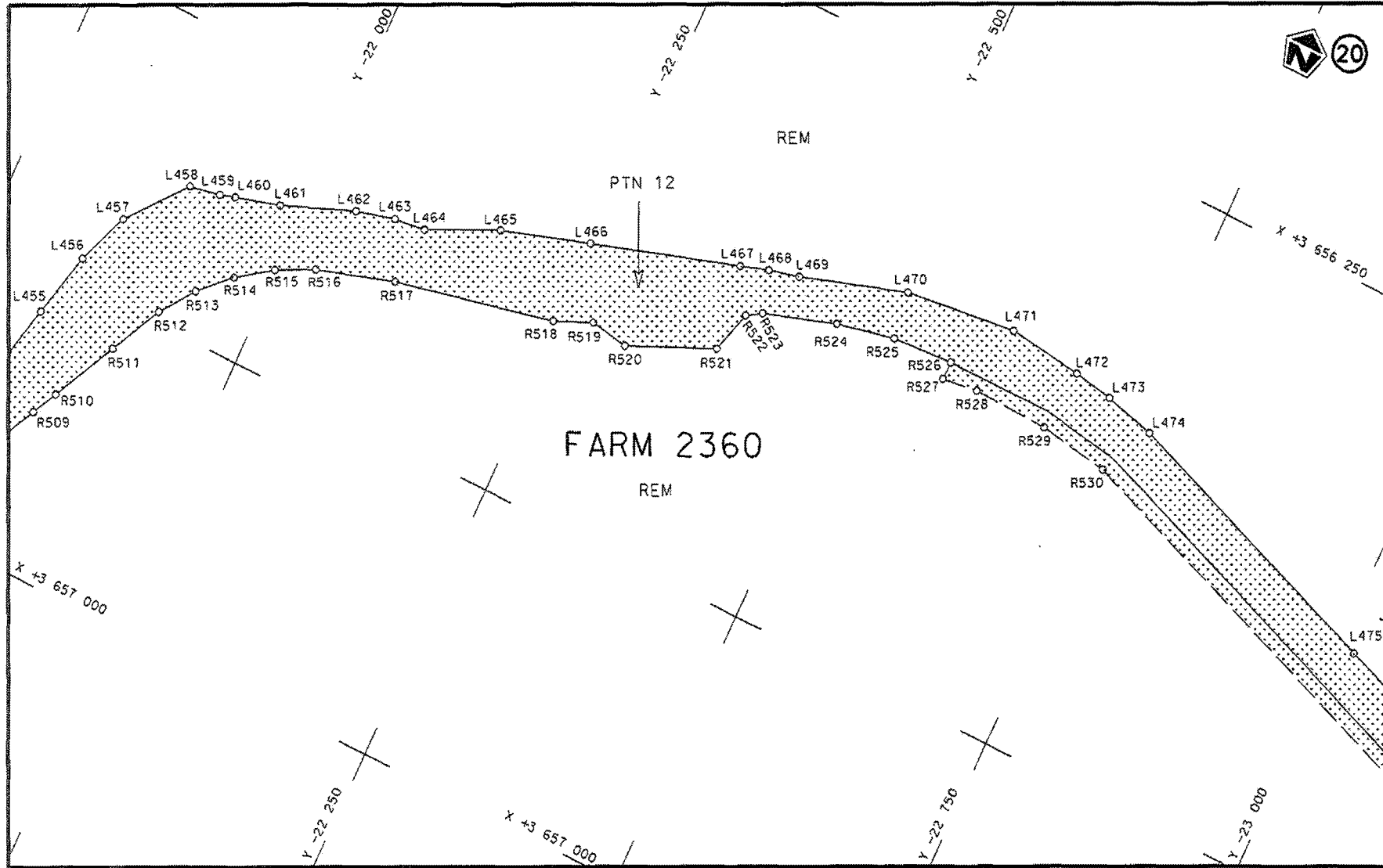
<p>Die Suid Afrikaanse Nasionale Padagentskap MSB Bpk</p>	<p>Die figuur getoon</p>		<p>steldie padreserve voor van 'n gedeelte represents the road reserve of a portion</p>	<p>Vel Sheet 8 of 31</p>
<p>The South African National Roads Agency SOC Ltd</p>	<p>The figure shown</p>		<p>van Nasionale Roete of National Route N2 Seksie Section 14</p>	<p>Plan P899/16</p>

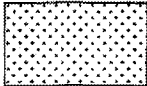


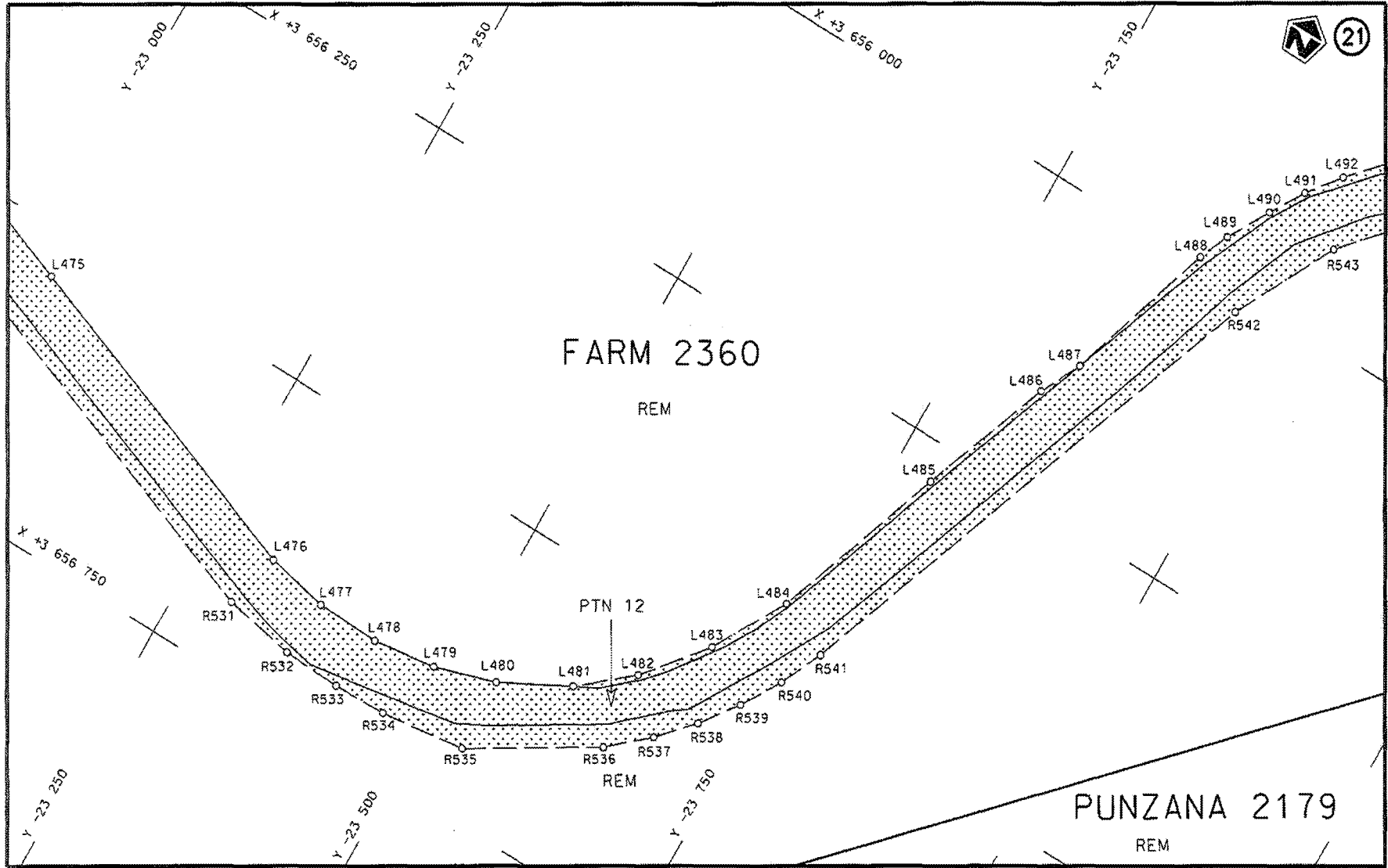
Die Suid Afrikaanse Nasionale Padagentskap MSB Bpk The South African National Roads Agency SOC Ltd	Die figuur getoon The figure shown		steldie padreserwe voor van 'n gedeelte represents the road reserve of a portion van Nasionale Roete of National Route	Vel Sheet 9 van of 31
			N2 Seksie Section 14	Plan P899/16

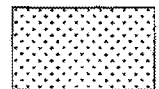


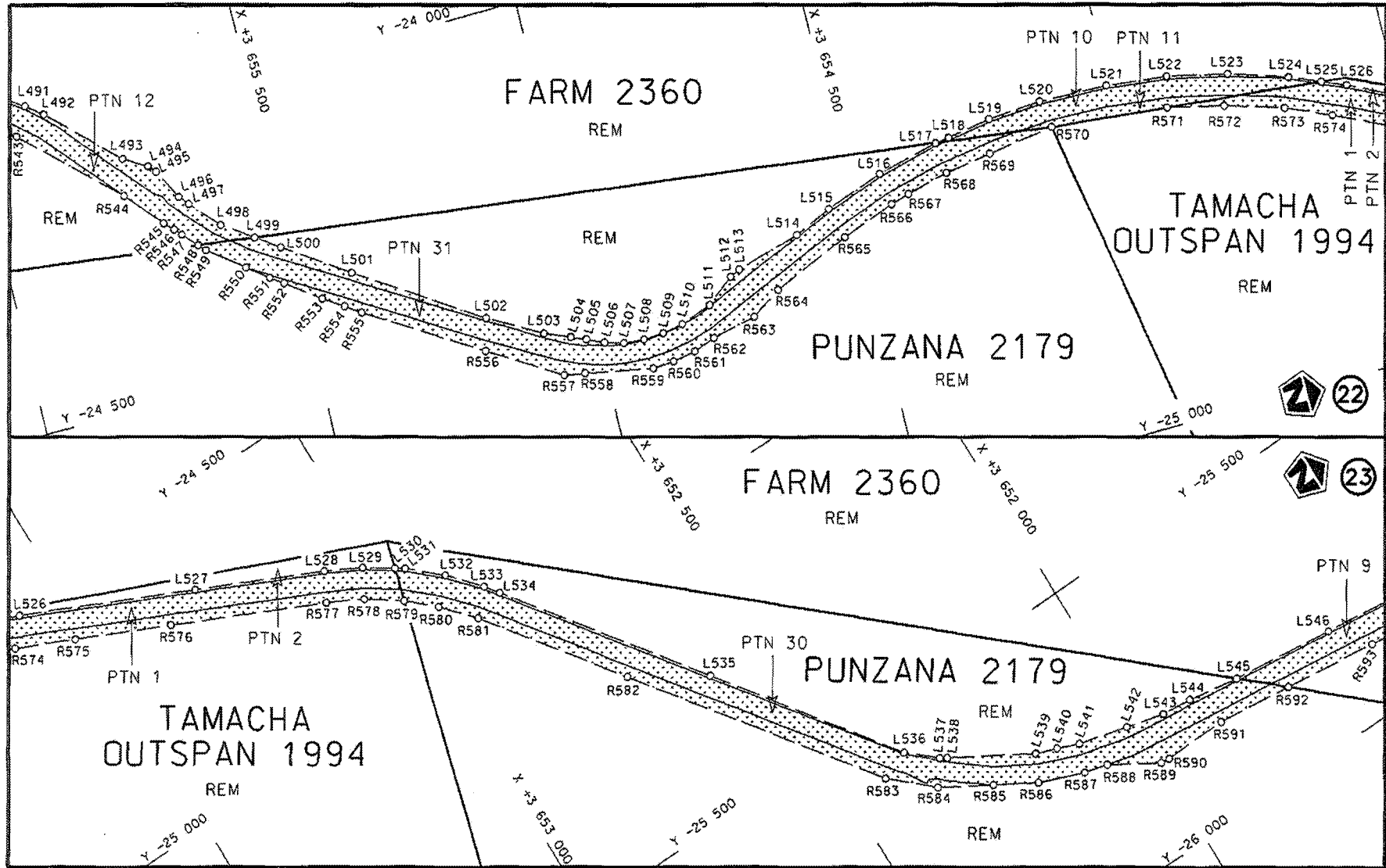
<p>Die Suid Afrikaanse Nasionale Padagentskap MSB Bpk The South African National Roads Agency SOC Ltd</p>	<p>Die figuur getoon The figure shown</p>	 <p>steldie padreserwe voor van 'n gedeelte represents the road reserve of a portion van Nasionale Roete N2 Sektie Section of National Route 14</p>	<p>Vel Sheet 10 van 31 of of</p>
			<p>Plan P899/16</p>

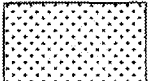


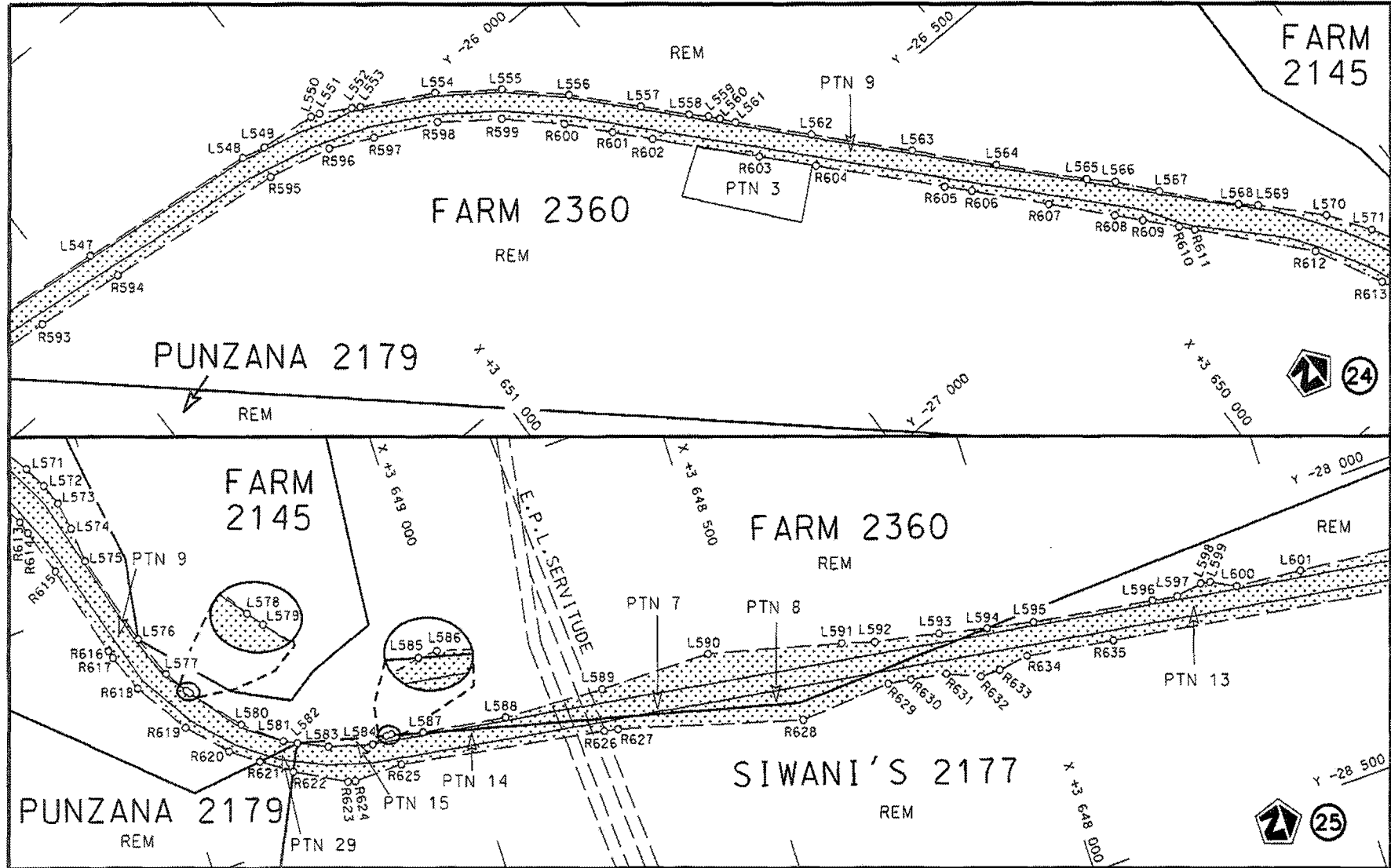
Die Suid Afrikaanse Nasionale Padagentskap MSB Bpk The South African National Roads Agency SOC Ltd	Die figuur getoon The figure shown		steldie padreserwe voor van 'n gedeelte represents the road reserve of a portion van Nasionale Roete N2 Seksie 14 of National Route N2 Section 14	Vel Sheet 11 van of 31 Plan P899/16
---	---------------------------------------	---	--	--

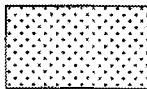


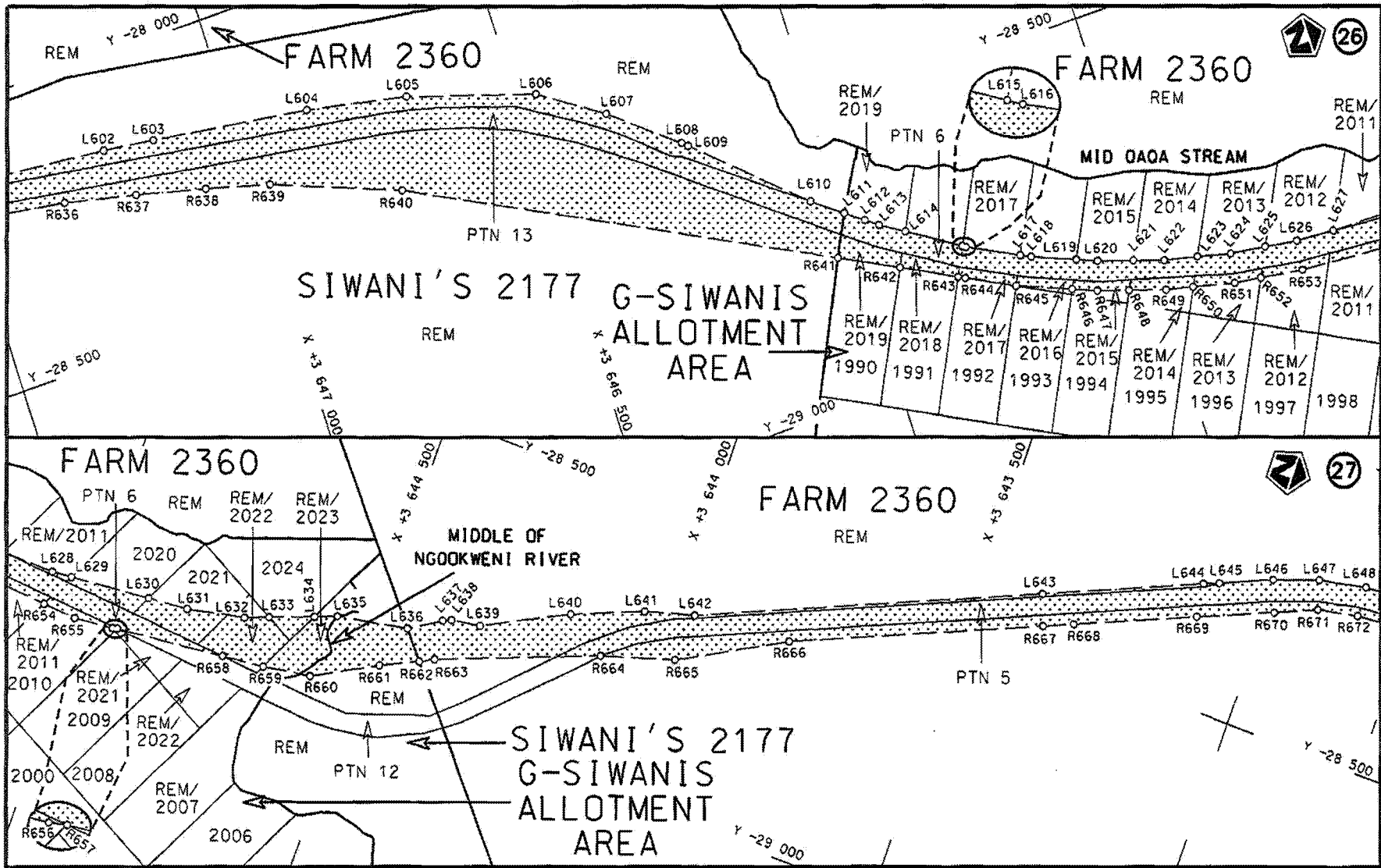
<p>Die Suid Afrikaanse Nasionale Padagentskap MSB Bpk The South African National Roads Agency SOC Ltd</p>	<p>Die figuur getoon The figure shown</p>	 <p>ste die padreserwe voor van 'n gedeelte represents the road reserve of a portion van Nasionale Roete N2 Seksie Section of National Route 14</p>	<p>Vel Sheet 12 van of 31 Plan P899/16</p>
---	---	--	--

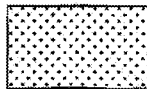


Die Suid Afrikaanse Nasionale Padogentskap MSB Bpk The South African National Roads Agency SOC Ltd	Die figuur getoon The figure shown	 stel die padreserwe voor van 'n gedeelte represents the road reserve of a portion van Nasionale Roete N2 of National Route	Vel 13 van 31 Sheet of
Seksie Section 14			Plan P899/16



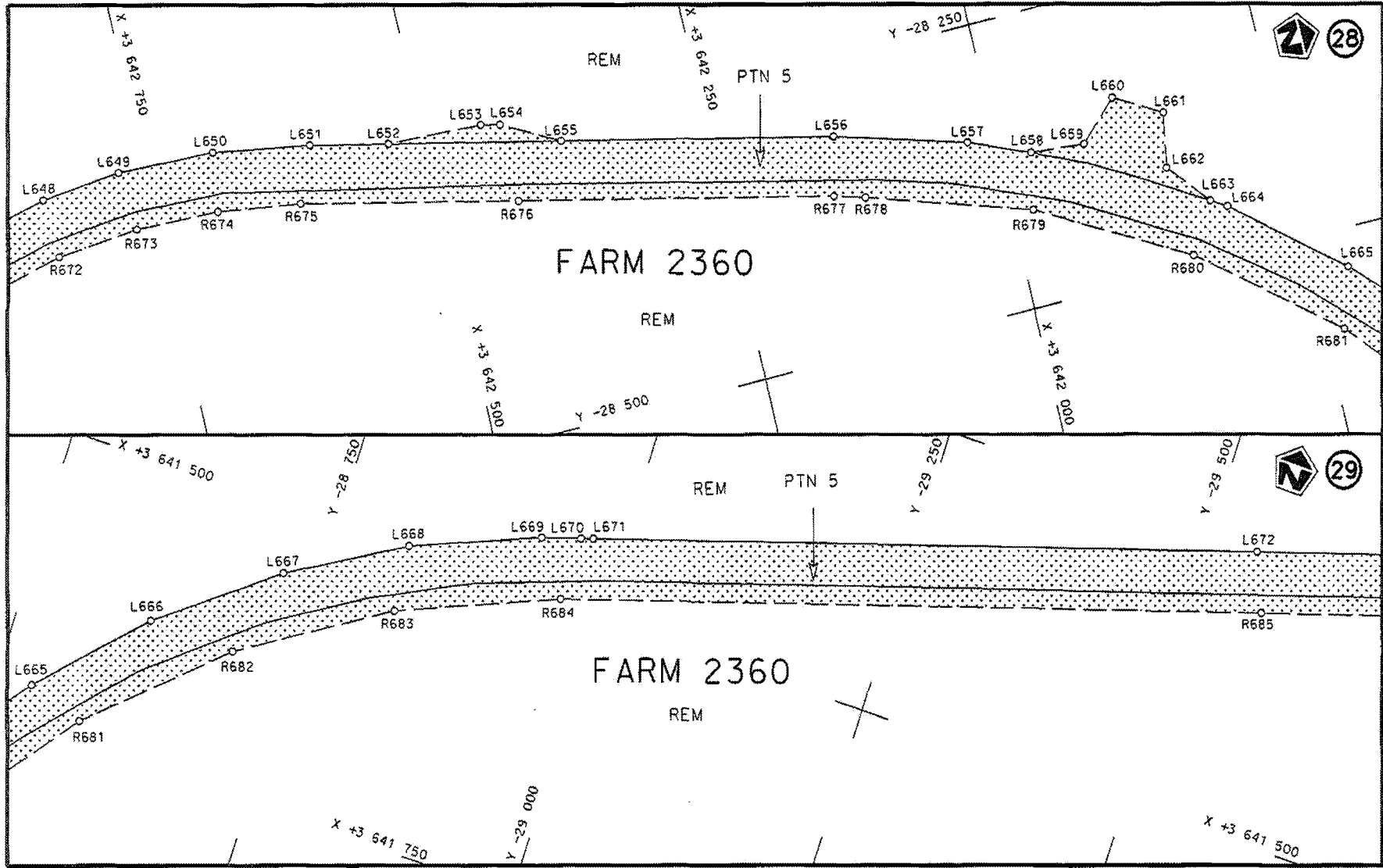
Die Suid Afrikaanse Nasionale Padagentskap MSB Bpk The South African National Roads Agency SOC Ltd	Die figuur getoon The figure shown		steldie padreserwe voor van 'n gedeelte represents the road reserve of a portion van Nasionale Roete N2 Seksie Section of National Route 14	Vel Sheet 14 van of 31
				Plan P899/16



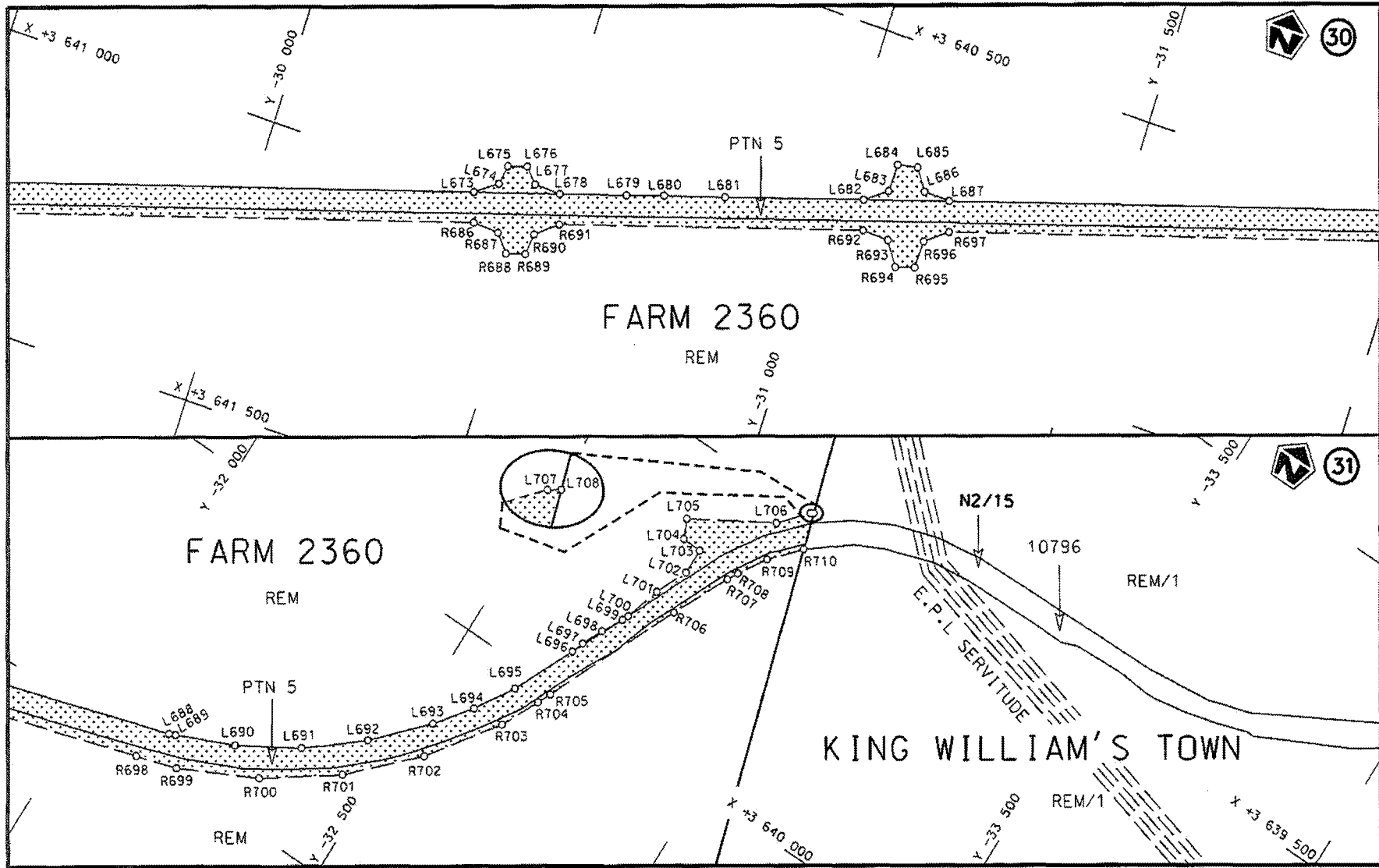
Die Suid Afrikaanse Nasionale Padagentskap MSB Bpk	Die figuur getoon		stel die padreserwe voor van 'n gedeelte represents the road reserve of a portion	Vel Sheet 15 van of 31
The South African National Roads Agency SOC Ltd	The figure shown		van Nasionale Roete of National Route N2	Plan P899/16

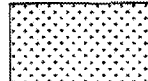
STAATSKOERANT 23 MAART 2018

No. 41512 1527



<p>Die Suid Afrikaanse Nasionale Padagentskap MSB Bpk The South African National Roads Agency SOC Ltd</p>	<p>Die figuur getoon The figure shown</p>		<p>steldie padreserwe voor van 'n gedeelte represents the road reserve of a portion van Nasionale Roete N2 Seksie Section 14 of National Route</p>	<p>Vel Sheet 16 van of 31</p>
			<p>N2 Seksie Section 14</p>	<p>Plan P899/16</p>



Die Suid Afrikaanse Nasionale Padogentskap MSB Bpk The South African National Roads Agency SOC Ltd	Die figuur getoon The figure shown		Vel Sheet 17 van of 31
steldie padreserwe voor van 'n gedeelte represents the road reserve of a portion van Nasionale Roete of National Route N2 Seksie Section 14			Plan P899/16

PADRESERWE KOÖRDINATE / ROAD RESERVE CO-ORDINATES						
LINKERKANT/LEFT HAND SIDE				REGTERKANT/RIGHT HAND SIDE		
	Y	X	WG 27°		Y	X
L1	487.98	3 679	107.70	R1	475.03	3 679 127.83
L2	420.64	3 679	089.85	R2	417.09	3 679 117.01
L3	368.95	3 679	076.15	R3	402.26	3 679 114.24
L4	350.13	3 679	071.16	R4	389.04	3 679 111.77
L5	340.77	3 679	068.68	R5	368.52	3 679 107.94
L6	291.31	3 679	058.85	R6	333.11	3 679 103.99
L7	287.06	3 679	060.02	R7	318.67	3 679 111.47
L8	220.94	3 679	069.99	R8	195.31	3 679 114.46
L9	170.94	3 679	078.42	R9	161.66	3 679 124.42
L10	128.53	3 679	090.46	R10	-106.55	3 679 203.97
L11	-24.08	3 679	125.62	R11	-191.34	3 679 258.95
L12	-77.57	3 679	145.20	R12	-194.90	3 679 261.54
L13	-164.17	3 679	179.34	R13	-269.77	3 679 305.62
L14	-225.02	3 679	234.35	R14	-337.63	3 679 346.33
L15	-291.19	3 679	270.67	R15	-426.45	3 679 362.94
L16	-362.20	3 679	294.10	R16	-536.35	3 679 359.00
L17	-453.77	3 679	303.06	R17	-647.04	3 679 329.98
L18	-516.28	3 679	298.84	R18	-746.95	3 679 303.79
L19	-599.79	3 679	270.75	R19	-769.27	3 679 315.70
L20	-624.65	3 679	262.38	R20	-819.68	3 679 341.70
L21	-671.34	3 679	250.20	R21	-869.47	3 679 374.61
L22	-713.27	3 679	247.71	R22	-931.71	3 679 402.08
L23	-774.61	3 679	253.06	R23	-956.72	3 679 412.85
L24	-848.96	3 679	267.62	R24	-1 052.57	3 679 505.41
L25	-918.02	3 679	281.93	R25	-1 126.72	3 679 581.33
L26	-993.50	3 679	326.56	R26	-1 179.42	3 679 610.61
L27	-1 074.66	3 679	381.00	R27	-1 253.09	3 679 643.91
L28	-1 118.93	3 679	407.70	R28	-1 339.13	3 679 684.49
L29	-1 309.01	3 679	551.34	R29	-1 560.09	3 679 789.18
L30	-1 413.94	3 679	601.55	R30	-1 631.89	3 679 804.30
L31	-1 544.23	3 679	678.47	R31	-1 705.27	3 679 861.48
L32	-1 699.41	3 679	780.91	R32	-1 769.91	3 679 947.15
L33	-1 765.46	3 679	843.31	R33	-1 794.17	3 680 000.22
L34	-1 802.20	3 679	894.32	R34	-1 797.41	3 680 032.88
L35	-1 832.80	3 679	940.54	R35	-1 799.52	3 680 033.32
L36	-1 837.35	3 679	945.64	R36	-1 813.15	3 680 035.66
L37	-1 845.27	3 679	967.14	R37	-1 839.02	3 680 083.09
L38	-1 879.17	3 680	015.39	R38	-1 857.35	3 680 103.52
L39	-1 924.27	3 680	091.87	R39	-1 936.86	3 680 177.62
L40	-1 994.84	3 680	168.15	R40	-1 980.78	3 680 214.07
L41	-2 041.98	3 680	201.97	R41	-2 031.08	3 680 245.55
L42	-2 077.65	3 680	221.12	R42	-2 111.08	3 680 287.55
L43	-2 120.20	3 680	243.97	R43	-2 228.95	3 680 333.81
L44	-2 128.06	3 680	248.20	R44	-2 338.27	3 680 373.01
L45	-2 318.02	3 680	315.83	R45	-2 392.78	3 680 392.80
L46	-2 332.56	3 680	321.01	R46	-2 559.51	3 680 451.62
L47	-2 369.54	3 680	334.22	R47	-2 688.12	3 680 498.41
L48	-2 380.93	3 680	338.29	R48	-2 754.55	3 680 521.47
L49	-2 486.58	3 680	381.11	R49	-2 778.80	3 680 532.39
L50	-2 547.71	3 680	404.75	R50	-2 836.55	3 680 559.46
L51	-2 613.62	3 680	428.68	R51	-2 879.68	3 680 582.89

Vel	18	Van 31	P899/16
Sheet		of	

PADRESERWE KOÖRDINATE / ROAD RESERVE CO-ORDINATES						
LINKERKANT/LEFT HAND SIDE				REGTERKANT/RIGHT HAND SIDE		
	Y	X	WG 27°	Y	X	
L52	-2	768.16	3 680	481.22	R52	-2 924.05 3 680 616.93
L53	-2	846.20	3 680	508.81	R53	-2 932.99 3 680 624.63
L54	-2	894.24	3 680	537.21	R54	-2 958.77 3 680 646.80
L55	-2	947.74	3 680	574.84	R55	-2 961.35 3 680 649.66
L56	-2	973.19	3 680	593.68	R56	-3 022.60 3 680 703.52
L57	-3	013.65	3 680	626.78	R57	-3 072.76 3 680 743.14
L58	-3	082.61	3 680	680.02	R58	-3 121.57 3 680 781.71
L59	-3	165.70	3 680	747.28	R59	-3 207.29 3 680 825.46
L60	-3	223.49	3 680	779.06	R60	-3 290.36 3 680 863.74
L61	-3	318.23	3 680	796.93	R61	-3 376.32 3 680 879.26
L62	-3	391.47	3 680	828.75	R62	-3 399.24 3 680 883.11
L63	-3	507.17	3 680	853.30	R63	-3 434.13 3 680 888.97
L64	-3	671.26	3 680	895.54	R64	-3 471.18 3 680 896.10
L65	-3	704.65	3 680	911.23	R65	-3 547.05 3 680 916.94
L66	-3	761.11	3 680	937.87	R66	-3 560.46 3 680 922.50
L67	-3	817.69	3 680	963.75	R67	-3 652.15 3 680 952.63
L68	-3	873.42	3 681	005.67	R68	-3 679.84 3 680 963.77
L69	-3	985.66	3 681	071.72	R69	-3 707.73 3 680 979.61
L70	-3	997.21	3 681	078.51	R70	-3 766.70 3 681 008.70
L71	-4	095.47	3 681	142.89	R71	-3 811.65 3 681 030.59
L72	-4	116.66	3 681	154.38	R72	-3 862.86 3 681 056.31
L73	-4	212.03	3 681	194.69	R73	-3 908.53 3 681 084.98
L74	-4	327.05	3 681	218.16	R74	-3 969.80 3 681 120.33
L75	-4	348.83	3 681	221.86	R75	-4 071.28 3 681 186.82
L76	-4	411.76	3 681	221.28	R76	-4 083.38 3 681 193.58
L77	-4	480.64	3 681	218.50	R77	-4 095.63 3 681 199.77
L78	-4	731.64	3 681	204.69	R78	-4 197.14 3 681 242.68
L79	-4	843.53	3 681	198.88	R79	-4 317.91 3 681 267.40
L80	-5	037.39	3 681	188.81	R80	-4 344.92 3 681 271.90
L81	-5	081.55	3 681	171.49	R81	-4 383.23 3 681 274.32
L82	-5	106.52	3 681	170.20	R82	-4 413.74 3 681 276.25
L83	-5	152.19	3 681	182.84	R83	-4 480.37 3 681 271.76
L84	-5	167.37	3 681	182.06	R84	-4 526.24 3 681 284.45
L85	-5	238.75	3 681	177.03	R85	-4 557.34 3 681 281.98
L86	-5	253.82	3 681	176.31	R86	-4 604.87 3 681 263.35
L87	-5	593.86	3 681	160.13	R87	-4 734.23 3 681 254.62
L88	-5	600.40	3 681	159.33	R88	-4 829.76 3 681 253.94
L89	-5	611.89	3 681	159.16	R89	-5 050.56 3 681 241.20
L90	-6	131.03	3 681	132.41	R90	-5 169.95 3 681 231.99
L91	-6	915.72	3 681	092.34	R91	-5 614.46 3 681 209.09
L92	-7	212.79	3 681	074.45	R92	-5 726.09 3 681 203.34
L93	-7	371.33	3 681	033.60	R93	-6 133.59 3 681 182.34
L94	-7	412.05	3 681	018.08	R94	-6 919.37 3 681 142.22
L95	-7	437.79	3 681	008.15	R95	-7 220.60 3 681 124.07
L96	-7	557.36	3 680	960.78	R96	-7 393.30 3 681 079.57
L97	-7	736.47	3 680	847.08	R97	-7 450.52 3 681 056.90
L98	-7	820.42	3 680	794.56	R98	-7 498.86 3 681 053.88
L99	-8	053.06	3 680	649.05	R99	-7 522.65 3 681 044.45
L100	-8	068.62	3 680	639.31	R100	-7 558.96 3 681 013.93
L101	-8	415.80	3 680	423.73	R101	-7 580.89 3 681 005.24
L102	-8	517.93	3 680	360.12	R102	-7 762.44 3 680 889.81

Vel 19 Van 31
Sheet of

P899/16

PADRESERWE KOÖRDINATE / ROAD RESERVE CO-ORDINATES						
LINKERKANT/LEFT HAND SIDE				REGTERKANT/RIGHT HAND SIDE		
	Y	X	WG 27°	Y	X	
L103	-8	517.93	3 680	360.12	R103	-8 209.81 3 680 610.93
L104	-8	965.95	3 680	081.73	R104	-8 544.34 3 680 402.58
L105	-9	027.64	3 680	045.62	R105	-8 991.78 3 680 124.55
L106	-9	082.75	3 680	022.64	R106	-9 050.04 3 680 090.44
L107	-9	122.97	3 680	005.61	R107	-9 140.19 3 680 052.61
L108	-9	458.32	3 679	900.02	R108	-9 476.84 3 679 946.61
L109	-9	526.03	3 679	867.19	R109	-9 549.90 3 679 911.18
L110	-9	602.25	3 679	821.21	R110	-9 631.32 3 679 862.07
L111	-9	640.98	3 679	788.85	R111	-9 714.89 3 679 792.55
L112	-9	679.64	3 679	756.83	R112	-9 811.65 3 679 679.30
L113	-9	690.71	3 679	743.85	R113	-9 853.92 3 679 609.87
L114	-9	698.12	3 679	735.22	R114	-10 052.33 3 679 223.02
L115	-9	771.03	3 679	649.87	R115	-10 175.46 3 678 982.31
L116	-9	810.26	3 679	585.43	R116	-10 267.42 3 678 801.85
L117	-10	007.83	3 679	200.23	R117	-10 428.02 3 678 490.05
L118	-10	130.93	3 678	959.57	R118	-10 458.63 3 678 434.21
L119	-10	222.92	3 678	779.05	R119	-10 510.46 3 678 355.37
L120	-10	304.87	3 678	618.78	R120	-10 568.44 3 678 279.73
L121	-10	305.92	3 678	617.27	R121	-10 632.76 3 678 209.09
L122	-10	383.87	3 678	466.58	R122	-10 702.59 3 678 144.13
L123	-10	415.75	3 678	408.42	R123	-10 750.50 3 678 104.63
L124	-10	469.67	3 678	326.39	R124	-10 811.52 3 678 060.26
L125	-10	530.04	3 678	247.63	R125	-10 826.22 3 678 058.02
L126	-10	597.19	3 678	173.89	R126	-11 126.89 3 677 871.90
L127	-10	641.83	3 678	132.37	R127	-11 234.87 3 677 785.49
L128	-10	669.63	3 678	106.50	R128	-11 411.93 3 677 659.89
L129	-10	692.01	3 678	088.16	R129	-11 463.71 3 677 624.56
L130	-10	704.88	3 678	077.21	R130	-11 509.71 3 677 611.39
L131	-10	719.87	3 678	065.08	R131	-11 530.38 3 677 597.33
L132	-10	791.96	3 678	012.66	R132	-11 559.74 3 677 559.22
L133	-11	027.51	3 677	872.85	R133	-11 719.10 3 677 450.83
L134	-11	132.50	3 677	801.97	R134	-11 818.70 3 677 358.74
L135	-11	140.03	3 677	796.89	R135	-11 855.73 3 677 306.11
L136	-11	382.41	3 677	619.50	R136	-11 896.31 3 677 248.44
L137	-11	433.66	3 677	584.53	R137	-11 967.09 3 677 100.47
L138	-11	462.46	3 677	546.77	R138	-12 008.98 3 676 971.49
L139	-11	488.10	3 677	529.34	R139	-12 002.63 3 676 924.19
L140	-11	533.70	3 677	516.46	R140	-12 004.96 3 676 843.08
L141	-11	687.92	3 677	411.56	R141	-11 995.74 3 676 737.19
L142	-11	780.86	3 677	325.63	R142	-11 972.23 3 676 634.33
L143	-11	853.02	3 677	223.07	R143	-11 931.19 3 676 529.42
L144	-11	920.34	3 677	082.33	R144	-11 881.92 3 676 445.13
L145	-11	943.78	3 676	979.54	R145	-11 850.26 3 676 396.52
L146	-11	950.07	3 676	908.55	R146	-11 774.24 3 676 291.00
L147	-11	951.97	3 676	845.43	R147	-11 772.17 3 676 287.93
L148	-11	948.15	3 676	801.55	R148	-11 616.63 3 676 068.73
L149	-11	943.26	3 676	745.44	R149	-11 431.74 3 675 812.68
L150	-11	921.44	3 676	649.98	R150	-11 418.40 3 675 766.75
L151	-11	883.34	3 676	552.59	R151	-11 404.58 3 675 748.55
L152	-11	836.81	3 676	472.99	R152	-11 377.62 3 675 727.48
L153	-11	806.52	3 676	426.49	R153	-11 361.99 3 675 715.28

Vel 20 Van 31
Sheet of

P899/16

PADRESERWE KOÖRDINATE / ROAD RESERVE CO-ORDINATES					
LINKERKANT/LEFT HAND SIDE			REGTERKANT/RIGHT HAND SIDE		
	Y	X	WG 27°	Y	X
L154	-11	780.18	3	676	390.56
L155	-11	765.94	3	676	371.21
L156	-11	731.24	3	676	321.97
L157	-11	573.23	3	676	102.58
L158	-11	477.50	3	675	970.21
L159	-11	382.18	3	675	837.76
L160	-11	342.18	3	675	808.91
L161	-11	331.38	3	675	796.08
L162	-11	315.15	3	675	744.32
L163	-11	276.29	3	675	690.39
L164	-11	258.98	3	675	666.73
L165	-11	176.94	3	675	553.07
L166	-11	104.82	3	675	453.15
L167	-11	069.30	3	675	399.20
L168	-11	046.49	3	675	353.43
L169	-11	031.10	3	675	279.36
L170	-11	031.82	3	675	237.25
L171	-11	036.08	3	675	114.09
L172	-11	062.07	3	674	971.23
L173	-11	090.55	3	674	837.58
L174	-11	106.75	3	674	744.35
L175	-11	116.63	3	674	687.46
L176	-11	124.68	3	674	649.99
L177	-11	123.20	3	674	649.25
L178	-11	126.04	3	674	641.70
L179	-11	115.09	3	674	623.18
L180	-11	116.78	3	674	613.67
L181	-11	120.26	3	674	594.50
L182	-11	135.98	3	674	584.18
L183	-11	143.42	3	674	536.63
L184	-11	155.75	3	674	475.35
L185	-11	160.97	3	674	449.49
L186	-11	151.43	3	674	413.28
L187	-11	153.21	3	674	403.75
L188	-11	165.65	3	674	337.30
L189	-11	186.43	3	674	223.85
L190	-11	214.11	3	674	059.93
L191	-11	213.12	3	674	039.35
L192	-11	218.30	3	673	978.56
L193	-11	221.71	3	673	891.31
L194	-11	215.35	3	673	832.12
L195	-11	206.64	3	673	701.62
L196	-11	196.87	3	673	468.74
L197	-11	196.90	3	673	359.75
L198	-11	196.90	3	673	352.83
L199	-11	202.66	3	673	178.25
L200	-11	222.13	3	673	097.66
L201	-11	237.61	3	673	059.51
L202	-11	271.59	3	672	938.09
L203	-11	269.42	3	672	893.52
L204	-11	299.73	3	672	798.23
R154	-11	163.55	3	675	440.49
R155	-11	163.37	3	675	440.28
R156	-11	145.35	3	675	423.87
R157	-11	137.07	3	675	411.27
R158	-11	135.72	3	675	409.21
R159	-11	134.07	3	675	409.18
R160	-11	125.09	3	675	393.05
R161	-11	112.72	3	675	374.23
R162	-11	094.11	3	675	336.88
R163	-11	081.19	3	675	274.64
R164	-11	075.77	3	675	240.52
R165	-11	077.79	3	675	115.36
R166	-11	111.13	3	674	940.14
R167	-11	113.08	3	674	930.79
R168	-11	116.69	3	674	914.96
R169	-11	120.09	3	674	898.65
R170	-11	125.96	3	674	870.55
R171	-11	149.86	3	674	756.06
R172	-11	154.49	3	674	733.37
R173	-11	165.92	3	674	677.52
R174	-11	168.92	3	674	663.95
R175	-11	183.48	3	674	656.74
R176	-11	190.03	3	674	623.07
R177	-11	179.20	3	674	601.61
R178	-11	216.63	3	674	374.11
R179	-11	221.12	3	674	346.80
R180	-11	277.87	3	673	982.29
R181	-11	271.72	3	673	892.03
R182	-11	271.08	3	673	829.81
R183	-11	259.50	3	673	656.37
R184	-11	258.94	3	673	627.91
R185	-11	258.24	3	673	607.86
R186	-11	254.85	3	673	527.89
R187	-11	251.35	3	673	468.31
R188	-11	246.89	3	673	390.48
R189	-11	246.90	3	673	354.92
R190	-11	251.16	3	673	303.82
R191	-11	256.98	3	673	271.73
R192	-11	266.82	3	673	233.32
R193	-11	281.73	3	673	175.78
R194	-11	284.84	3	673	156.17
R195	-11	290.44	3	673	096.90
R196	-11	294.87	3	673	040.44
R197	-11	319.50	3	672	952.41
R198	-11	331.52	3	672	924.42
R199	-11	352.76	3	672	862.03
R200	-11	369.48	3	672	810.73
R201	-11	375.29	3	672	792.91
R202	-11	407.11	3	672	675.92
R203	-11	433.41	3	672	591.87
R204	-11	434.79	3	672	587.05

Vel 21 Van 31
Sheet

P899/16

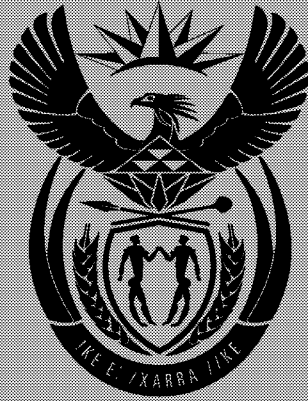
PADRESERWE KOÖRDINATE / ROAD RESERVE CO-ORDINATES						
LINKERKANT/LEFT HAND SIDE				REGTERKANT/RIGHT HAND SIDE		
	Y	X	WG 27°	Y	X	
L205	-11	339.03	3 672	726.04	R205	-11 446.01 3 672 551.64
L206	-11	383.65	3 672	565.11	R206	-11 474.17 3 672 487.16
L207	-11	436.28	3 672	398.95	R207	-11 487.60 3 672 449.10
L208	-11	520.85	3 672	149.74	R208	-11 495.86 3 672 409.48
L209	-11	590.03	3 671	930.95	R209	-11 501.54 3 672 376.30
L210	-11	694.11	3 671	600.44	R210	-11 568.72 3 672 164.18
L211	-11	732.43	3 671	480.01	R211	-11 571.47 3 672 154.58
L212	-11	750.65	3 671	422.75	R212	-11 626.58 3 671 981.04
L213	-11	758.06	3 671	396.73	R213	-11 655.56 3 671 889.31
L214	-11	759.03	3 671	395.96	R214	-11 741.80 3 671 615.46
L215	-11	760.59	3 671	391.64	R215	-11 791.22 3 671 458.50
L216	-11	782.86	3 671	322.65	R216	-11 794.96 3 671 451.77
L217	-11	805.16	3 671	252.63	R217	-11 795.32 3 671 447.43
L218	-11	808.72	3 671	241.78	R218	-11 801.42 3 671 427.93
L219	-11	912.10	3 670	920.82	R219	-11 804.19 3 671 419.06
L220	-11	986.00	3 670	688.08	R220	-11 807.39 3 671 408.84
L221	-12	069.91	3 670	417.58	R221	-11 831.53 3 671 331.68
L222	-12	129.11	3 670	230.83	R222	-11 967.84 3 670 910.65
L223	-12	218.20	3 669	954.10	R223	-12 007.85 3 670 784.86
L224	-12	234.93	3 669	905.56	R224	-12 118.91 3 670 433.16
L225	-12	290.58	3 669	735.37	R225	-12 176.24 3 670 252.03
L226	-12	323.71	3 669	638.47	R226	-12 204.04 3 670 213.87
L227	-12	398.78	3 669	475.99	R227	-12 211.64 3 670 189.75
L228	-12	442.52	3 669	381.62	R228	-12 210.85 3 670 142.70
L229	-12	509.16	3 669	240.32	R229	-12 265.52 3 669 969.97
L230	-12	627.12	3 668	998.64	R230	-12 282.17 3 669 921.72
L231	-12	659.84	3 668	932.64	R231	-12 313.01 3 669 827.42
L232	-12	718.32	3 668	812.67	R232	-12 308.65 3 669 807.86
L233	-12	724.57	3 668	765.76	R233	-12 323.08 3 669 769.00
L234	-12	735.41	3 668	743.30	R234	-12 333.72 3 669 763.51
L235	-12	768.58	3 668	709.65	R235	-12 370.17 3 669 657.11
L236	-12	860.05	3 668	522.34	R236	-12 443.83 3 669 497.93
L237	-12	868.48	3 668	505.08	R237	-12 674.42 3 669 025.33
L238	-12	876.39	3 668	488.88	R238	-12 679.01 3 669 006.87
L239	-12	909.59	3 668	420.68	R239	-12 703.07 3 668 959.70
L240	-12	927.97	3 668	382.62	R240	-12 714.95 3 668 941.79
L241	-12	935.64	3 668	366.88	R241	-12 773.22 3 668 823.74
L242	-13	048.50	3 668	135.37	R242	-12 890.54 3 668 584.44
L243	-13	149.96	3 667	928.06	R243	-12 893.51 3 668 578.85
L244	-13	213.59	3 667	798.07	R244	-12 930.09 3 668 506.77
L245	-13	293.15	3 667	635.90	R245	-12 930.48 3 668 504.07
L246	-13	536.60	3 667	140.64	R246	-12 932.34 3 668 491.22
L247	-13	569.88	3 667	073.18	R247	-12 933.01 3 668 486.58
L248	-13	583.99	3 667	044.58	R248	-12 972.93 3 668 404.49
L249	-13	639.09	3 666	932.90	R249	-12 974.20 3 668 405.20
L250	-13	691.58	3 666	824.42	R250	-12 982.10 3 668 389.44
L251	-13	719.08	3 666	767.96	R251	-12 991.22 3 668 371.25
L252	-13	723.61	3 666	760.80	R252	-13 059.22 3 668 261.50
L253	-13	731.26	3 666	743.52	R253	-13 071.14 3 668 239.49
L254	-13	741.14	3 666	723.50	R254	-13 077.41 3 668 192.48
L255	-13	773.70	3 666	658.50	R255	-13 095.36 3 668 155.73

Vel	22	Van	31	P899/16
Sheet		of		

PADRESERWE KOÖRDINATE / ROAD RESERVE CO-ORDINATES						
LINKERKANT/LEFT HAND SIDE				REGTERKANT/RIGHT HAND SIDE		
	Y	X	WG 27°		Y	X
L256	-13 814.10	3 666	562.60	R256	-13 115.42	3 668 114.66
L257	-13 834.43	3 666	507.13	R257	-13 142.09	3 668 060.05
L258	-13 862.82	3 666	429.67	R258	-13 180.23	3 667 995.07
L259	-13 872.32	3 666	389.36	R259	-13 186.59	3 667 975.60
L260	-13 909.66	3 666	230.33	R260	-13 254.77	3 667 831.26
L261	-13 923.00	3 666	085.41	R261	-13 323.43	3 667 694.44
L262	-13 925.88	3 665	994.81	R262	-13 359.34	3 667 617.94
L263	-13 921.06	3 665	905.93	R263	-13 467.78	3 667 401.06
L264	-13 917.75	3 665	851.24	R264	-13 480.84	3 667 367.41
L265	-13 909.95	3 665	799.34	R265	-13 581.48	3 667 162.67
L266	-13 901.84	3 665	745.01	R266	-13 768.90	3 666 780.26
L267	-13 855.36	3 665	517.79	R267	-13 770.67	3 666 776.63
L268	-13 839.54	3 665	431.82	R268	-13 778.43	3 666 760.82
L269	-13 820.27	3 665	306.16	R269	-13 782.28	3 666 748.86
L270	-13 815.92	3 665	261.00	R270	-13 784.72	3 666 748.19
L271	-13 814.29	3 665	200.77	R271	-13 791.02	3 666 735.43
L272	-13 827.70	3 665	084.75	R272	-13 799.53	3 666 718.22
L273	-13 840.56	3 665	039.45	R273	-13 819.41	3 666 678.33
L274	-13 857.35	3 664	991.64	R274	-13 820.94	3 666 674.59
L275	-13 881.18	3 664	937.34	R275	-13 860.51	3 666 581.15
L276	-13 902.34	3 664	899.14	R276	-13 879.21	3 666 529.90
L277	-13 937.41	3 664	839.33	R277	-13 901.97	3 666 475.94
L278	-14 037.82	3 664	669.19	R278	-13 910.12	3 666 446.33
L279	-14 041.26	3 664	656.16	R279	-13 921.02	3 666 400.30
L280	-14 056.68	3 664	624.96	R280	-13 928.31	3 666 378.36
L281	-14 081.21	3 664	570.17	R281	-13 934.02	3 666 359.55
L282	-14 098.16	3 664	514.41	R282	-13 937.55	3 666 339.43
L283	-14 104.85	3 664	484.07	R283	-13 941.57	3 666 312.80
L284	-14 162.67	3 664	196.85	R284	-13 959.00	3 666 238.56
L285	-14 183.14	3 664	094.84	R285	-13 972.92	3 666 088.40
L286	-14 212.08	3 663	950.50	R286	-13 975.16	3 666 039.73
L287	-14 207.66	3 663	942.32	R287	-13 975.76	3 665 994.45
L288	-14 230.75	3 663	950.24	R288	-13 975.39	3 665 950.33
L289	-14 237.33	3 663	917.27	R289	-13 973.84	3 665 918.56
L290	-14 249.58	3 663	861.72	R290	-13 970.79	3 665 878.20
L291	-14 265.36	3 663	801.65	R291	-13 967.85	3 665 845.89
L292	-14 269.21	3 663	789.84	R292	-13 958.24	3 665 778.23
L293	-14 291.49	3 663	721.46	R293	-13 950.07	3 665 714.80
L294	-14 309.81	3 663	677.51	R294	-13 948.86	3 665 704.33
L295	-14 301.18	3 663	674.26	R295	-13 945.07	3 665 678.25
L296	-14 318.03	3 663	643.71	R296	-13 938.26	3 665 638.40
L297	-14 326.19	3 663	596.98	R297	-13 924.59	3 665 539.42
L298	-14 338.65	3 663	573.88	R298	-13 921.84	3 665 519.36
L299	-14 384.94	3 663	519.65	R299	-13 918.74	3 665 499.38
L300	-14 721.00	3 662	921.10	R300	-13 893.63	3 665 428.28
L301	-14 800.10	3 662	800.42	R301	-13 869.75	3 665 298.85
L302	-14 838.05	3 662	751.70	R302	-13 868.63	3 665 287.29
L303	-14 892.88	3 662	690.67	R303	-13 867.29	3 665 202.64
L304	-15 012.76	3 662	556.70	R304	-13 868.33	3 665 189.12
L305	-15 016.92	3 662	547.09	R305	-13 879.13	3 665 111.26
L306	-15 186.46	3 662	362.46	R306	-13 898.35	3 665 035.16

Vel	23	Van	31	P899/16
Sheet		of		

CONTINUES ON PAGE 1538 - PART 13



Government Gazette Staatskoerant

REPUBLIC OF SOUTH AFRICA
REPUBLIEK VAN SUID AFRIKA

Vol. 633

23 March
Maart 2018

No. 41512

PART 13 OF 16

N.B. The Government Printing Works will not be held responsible for the quality of "Hard Copies" or "Electronic Files" submitted for publication purposes

ISSN 1682-5843



9 771682 584003

41512



AIDS HELPLINE: 0800-0123-22 Prevention is the cure

PADRESERWE KOÖRDINATE / ROAD RESERVE CO-ORDINATES									
LINKERKANT/LEFT HAND SIDE			REGTERKANT/RIGHT HAND SIDE						
	Y	X	WG 27°	Y	X				
L307	-15	631.34	3 661	861.80	R307	-13	931.69	3 664	949.08
L308	-15	717.55	3 661	764.82	R308	-13	945.88	3 664	923.50
L309	-16	030.01	3 661	413.66	R309	-13	980.63	3 664	864.31
L310	-16	061.65	3 661	344.96	R310	-14	084.45	3 664	688.31
L311	-16	084.17	3 661	256.84	R311	-14	088.31	3 664	673.55
L312	-16	085.23	3 661	203.09	R312	-14	103.00	3 664	646.06
L313	-16	082.07	3 661	179.76	R313	-14	128.03	3 664	588.00
L314	-16	032.74	3 661	025.41	R314	-14	147.22	3 664	526.51
L315	-15	993.08	3 660	878.20	R315	-14	153.93	3 664	493.65
L316	-15	993.00	3 660	815.89	R316	-14	160.33	3 664	474.96
L317	-15	997.26	3 660	775.97	R317	-14	176.35	3 664	382.07
L318	-16	012.72	3 660	711.75	R318	-14	195.98	3 664	284.32
L319	-16	026.67	3 660	690.35	R319	-14	210.77	3 664	219.96
L320	-16	062.90	3 660	601.19	R320	-14	214.64	3 664	199.92
L321	-16	109.32	3 660	533.35	R321	-14	220.20	3 664	181.34
L322	-16	136.26	3 660	502.27	R322	-14	233.81	3 664	116.63
L323	-16	177.19	3 660	466.65	R323	-14	265.99	3 663	962.33
L324	-16	253.73	3 660	410.16	R324	-14	274.28	3 663	922.11
L325	-16	314.09	3 660	379.98	R325	-14	293.89	3 663	839.96
L326	-16	403.81	3 660	349.82	R326	-14	301.95	3 663	812.86
L327	-16	468.11	3 660	341.41	R327	-14	358.07	3 663	694.94
L328	-16	503.49	3 660	337.54	R328	-14	446.10	3 663	542.22
L329	-16	555.80	3 660	346.45	R329	-14	724.68	3 663	037.81
L330	-16	585.29	3 660	351.36	R330	-14	756.76	3 662	963.12
L331	-16	598.75	3 660	353.82	R331	-14	763.77	3 662	947.16
L332	-16	603.52	3 660	354.82	R332	-14	810.56	3 662	875.68
L333	-16	661.88	3 660	369.38	R333	-14	840.91	3 662	829.55
L334	-16	702.67	3 660	384.42	R334	-14	876.65	3 662	783.54
L335	-16	771.19	3 660	415.90	R335	-14	930.09	3 662	724.07
L336	-16	832.71	3 660	456.83	R336	-15	119.81	3 662	515.59
L337	-16	885.78	3 660	499.60	R337	-15	240.32	3 662	384.63
L338	-16	982.70	3 660	550.67	R338	-15	582.36	3 662	000.42
L339	-17	033.28	3 660	571.98	R339	-15	676.33	3 661	894.74
L340	-17	105.56	3 660	582.88	R340	-15	765.24	3 661	794.69
L341	-17	103.03	3 660	594.43	R341	-15	814.62	3 661	731.02
L342	-17	381.48	3 660	662.75	R342	-15	924.36	3 661	607.81
L343	-17	488.50	3 660	675.83	R343	-15	910.59	3 661	595.46
L344	-17	529.03	3 660	670.60	R344	-16	055.12	3 661	433.05
L345	-17	567.21	3 660	655.90	R345	-16	082.99	3 661	382.97
L346	-17	623.18	3 660	617.66	R346	-16	104.37	3 661	323.40
L347	-17	661.01	3 660	577.77	R347	-16	115.80	3 661	261.42
L348	-17	665.44	3 660	535.00	R348	-16	116.58	3 661	198.13
L349	-17	637.01	3 660	527.47	R349	-16	107.02	3 661	135.89
L350	-17	667.42	3 660	437.54	R350	-16	090.45	3 661	083.82
L351	-17	794.40	3 660	360.74	R351	-16	065.91	3 661	021.98
L352	-17	833.86	3 660	324.15	R352	-16	039.93	3 660	934.03
L353	-17	886.97	3 660	281.91	R353	-16	032.76	3 660	875.77
L354	-17	958.27	3 660	241.54	R354	-16	032.64	3 660	817.36
L355	-18	050.07	3 660	213.35	R355	-16	040.33	3 660	759.43
L356	-18	159.26	3 660	211.30	R356	-16	056.17	3 660	701.64
L357	-18	200.21	3 660	214.43	R357	-16	078.28	3 660	648.62

Vel	24	Van	31	P899/16
Sheet		of		

PADRESERWE KOÖRDINATE / ROAD RESERVE CO-ORDINATES						
LINKERKANT/LEFT HAND SIDE				REGTERKANT/RIGHT HAND SIDE		
	Y	X	WG 27°	Y	X	
L358	-18	248.21	3 660	222.22	R358	-16 107.20 3 660 597.67
L359	-18	305.77	3 660	242.23	R359	-16 142.51 3 660 550.32
L360	-18	381.05	3 660	282.65	R360	-16 183.02 3 660 508.27
L361	-18	455.83	3 660	322.46	R361	-16 228.87 3 660 471.37
L362	-18	468.07	3 660	328.79	R362	-16 279.02 3 660 440.39
L363	-18	471.60	3 660	330.62	R363	-16 331.97 3 660 415.38
L364	-18	524.62	3 660	355.68	R364	-16 387.85 3 660 396.14
L365	-18	547.75	3 660	366.54	R365	-16 445.19 3 660 383.69
L366	-18	655.51	3 660	417.36	R366	-16 503.76 3 660 379.14
L367	-18	730.91	3 660	448.88	R367	-16 533.11 3 660 379.34
L368	-18	775.59	3 660	459.62	R368	-16 592.24 3 660 385.96
L369	-18	836.52	3 660	469.59	R369	-16 646.06 3 660 398.63
L370	-18	850.93	3 660	470.61	R370	-16 677.90 3 660 408.82
L371	-18	854.93	3 660	470.85	R371	-16 731.20 3 660 432.59
L372	-18	897.86	3 660	472.85	R372	-16 776.80 3 660 460.03
L373	-18	953.96	3 660	470.73	R373	-16 847.82 3 660 516.66
L374	-19	012.73	3 660	462.78	R374	-16 931.35 3 660 581.47
L375	-19	071.38	3 660	448.88	R375	-16 978.00 3 660 604.47
L376	-19	126.07	3 660	429.80	R376	-17 148.16 3 660 648.60
L377	-19	181.55	3 660	404.26	R377	-17 214.27 3 660 665.04
L378	-19	232.71	3 660	373.62	R378	-17 391.71 3 660 702.83
L379	-19	281.37	3 660	337.79	R379	-17 490.57 3 660 712.62
L380	-19	317.16	3 660	306.24	R380	-17 560.19 3 660 697.40
L381	-19	404.75	3 660	221.76	R381	-17 604.95 3 660 675.58
L382	-19	426.43	3 660	188.47	R382	-17 636.96 3 660 655.93
L383	-19	457.69	3 660	165.70	R383	-17 673.61 3 660 618.88
L384	-19	564.26	3 660	063.42	R384	-17 677.95 3 660 621.85
L385	-19	581.64	3 660	045.84	R385	-17 706.22 3 660 583.67
L386	-19	582.11	3 660	045.06	R386	-17 739.29 3 660 528.24
L387	-19	693.15	3 659	923.73	R387	-17 779.02 3 660 458.87
L388	-19	732.81	3 659	880.37	R388	-17 800.01 3 660 427.60
L389	-19	740.07	3 659	872.47	R389	-17 854.66 3 660 361.87
L390	-19	804.60	3 659	802.40	R390	-17 895.16 3 660 335.21
L391	-19	832.88	3 659	775.74	R391	-17 967.52 3 660 293.67
L392	-19	871.85	3 659	734.49	R392	-18 001.10 3 660 277.34
L393	-19	890.96	3 659	674.18	R393	-18 031.41 3 660 265.51
L394	-19	896.80	3 659	630.04	R394	-18 098.75 3 660 250.24
L395	-19	899.84	3 659	607.07	R395	-18 155.35 3 660 247.70
L396	-19	922.57	3 659	435.15	R396	-18 202.80 3 660 252.82
L397	-19	954.49	3 659	165.44	R397	-18 270.74 3 660 271.16
L398	-19	969.59	3 659	157.25	R398	-18 296.99 3 660 282.33
L399	-19	973.04	3 659	124.04	R399	-18 365.51 3 660 314.78
L400	-19	976.34	3 659	087.25	R400	-18 554.37 3 660 403.07
L401	-19	980.93	3 658	988.63	R401	-18 632.72 3 660 441.68
L402	-19	980.93	3 658	926.85	R402	-18 713.75 3 660 475.48
L403	-19	975.56	3 658	773.72	R403	-18 773.29 3 660 491.13
L404	-19	974.10	3 658	637.35	R404	-18 810.51 3 660 497.17
L405	-19	971.91	3 658	606.34	R405	-18 858.41 3 660 503.83
L406	-19	961.23	3 658	437.68	R406	-18 888.92 3 660 505.01
L407	-19	960.65	3 658	355.59	R407	-18 960.30 3 660 501.56
L408	-19	962.19	3 658	314.82	R408	-19 021.06 3 660 492.96

Vel 25
Sheet of

Van 31
of

P899/16

PADRESERWE KOÖRDINATE / ROAD RESERVE CO-ORDINATES					
LINKERKANT/LEFT HAND SIDE			REGTERKANT/RIGHT HAND SIDE		
	Y	X	WG 27°	Y	X
L409	-19 965.11	3 658 304.29		R409	-19 068.92 3 660 505.36
L410	-19 976.89	3 658 248.62		R410	-19 181.34 3 660 439.24
L411	-20 008.47	3 658 188.59		R411	-19 197.10 3 660 431.84
L412	-20 031.58	3 658 158.07		R412	-19 250.11 3 660 400.21
L413	-20 055.70	3 658 125.96		R413	-19 300.39 3 660 362.77
L414	-20 091.80	3 658 098.08		R414	-19 337.78 3 660 329.76
L415	-20 142.20	3 658 064.01		R415	-19 391.90 3 660 277.43
L416	-20 364.98	3 658 012.16		R416	-19 406.29 3 660 280.91
L417	-20 481.13	3 657 976.86		R417	-19 450.42 3 660 224.11
L418	-20 545.11	3 657 947.73		R418	-19 466.31 3 660 210.21
L419	-20 624.57	3 657 860.45		R419	-19 596.11 3 660 084.43
L420	-20 753.79	3 657 718.20		R420	-19 607.09 3 660 080.71
L421	-20 811.48	3 657 659.46		R421	-19 678.83 3 660 011.01
L422	-20 821.47	3 657 653.94		R422	-19 756.83 3 659 940.72
L423	-20 843.31	3 657 641.87		R423	-19 764.01 3 659 934.34
L424	-20 871.80	3 657 628.09		R424	-19 774.75 3 659 924.48
L425	-20 898.47	3 657 616.63		R425	-19 817.61 3 659 884.57
L426	-20 920.78	3 657 610.43		R426	-19 857.51 3 659 842.14
L427	-20 942.86	3 657 605.16		R427	-19 878.70 3 659 813.41
L428	-20 983.12	3 657 600.42		R428	-19 897.85 3 659 784.68
L429	-20 997.35	3 657 599.52		R429	-19 909.19 3 659 765.21
L430	-21 017.80	3 657 599.84		R430	-19 928.30 3 659 719.44
L431	-21 070.38	3 657 606.33		R431	-19 947.94 3 659 651.30
L432	-21 136.11	3 657 630.66		R432	-19 950.37 3 659 631.39
L433	-21 155.74	3 657 632.32		R433	-19 978.39 3 659 403.95
L434	-21 208.57	3 657 648.96		R434	-19 979.97 3 659 382.08
L435	-21 285.82	3 657 678.17		R435	-19 972.62 3 659 376.27
L436	-21 313.27	3 657 683.14		R436	-19 972.99 3 659 371.82
L437	-21 381.76	3 657 676.04		R437	-19 981.63 3 659 360.23
L438	-21 424.08	3 657 661.91		R438	-19 983.46 3 659 348.23
L439	-21 446.39	3 657 645.93		R439	-19 988.71 3 659 333.32
L440	-21 522.15	3 657 550.36		R440	-19 987.07 3 659 329.20
L441	-21 544.67	3 657 454.84		R441	-19 987.27 3 659 311.50
L442	-21 550.28	3 657 291.64		R442	-20 008.50 3 659 136.13
L443	-21 553.46	3 657 268.16		R443	-20 016.35 3 659 058.75
L444	-21 556.08	3 657 248.42		R444	-20 018.05 3 658 996.82
L445	-21 538.72	3 657 225.32		R445	-20 022.53 3 658 994.59
L446	-21 547.95	3 657 177.69		R446	-20 012.75 3 658 741.15
L447	-21 591.17	3 657 124.13		R447	-20 008.75 3 658 630.34
L448	-21 671.06	3 657 063.13		R448	-20 003.78 3 658 592.17
L449	-21 685.92	3 657 040.36		R449	-20 004.60 3 658 574.98
L450	-21 758.12	3 656 927.84		R450	-20 003.75 3 658 552.39
L451	-21 767.93	3 656 918.70		R451	-20 004.14 3 658 520.47
L452	-21 790.81	3 656 878.47		R452	-19 998.40 3 658 374.67
L453	-21 796.38	3 656 866.09		R453	-20 001.79 3 658 303.69
L454	-21 813.26	3 656 829.03		R454	-20 010.82 3 658 270.95
L455	-21 823.76	3 656 785.79		R455	-20 027.30 3 658 239.23
L456	-21 837.79	3 656 729.17		R456	-20 043.69 3 658 211.68
L457	-21 856.12	3 656 682.92		R457	-20 070.76 3 658 181.67
L458	-21 898.39	3 656 632.14		R458	-20 098.72 3 658 157.74
L459	-21 925.41	3 656 627.09		R459	-20 130.93 3 658 139.56

Vel	26	Van	31	P899/16
Sheet		of		

PADRESERWE KOÖRDINATE / ROAD RESERVE CO-ORDINATES									
LINKERKANT/LEFT HAND SIDE			REGTERKANT/RIGHT HAND SIDE						
	Y	X	WG 27°	Y	X				
L460	-21	938.65	3 656	622.82	R460	-20	136.72	3 658	137.28
L461	-21	978.14	3 656	611.85	R461	-20	166.03	3 658	127.63
L462	-22	041.72	3 656	586.40	R462	-20	202.01	3 658	118.20
L463	-22	076.29	3 656	577.37	R463	-20	279.02	3 658	103.08
L464	-22	104.19	3 656	574.05	R464	-20	307.41	3 658	092.41
L465	-22	166.04	3 656	544.71	R465	-20	343.24	3 658	082.91
L466	-22	244.03	3 656	519.78	R466	-20	414.79	3 658	065.48
L467	-22	373.66	3 656	479.03	R467	-20	447.60	3 658	053.64
L468	-22	398.59	3 656	471.17	R468	-20	480.84	3 658	035.64
L469	-22	425.78	3 656	464.16	R469	-20	514.71	3 658	021.46
L470	-22	519.81	3 656	434.19	R470	-20	542.87	3 658	000.79
L471	-22	619.78	3 656	422.22	R471	-20	643.54	3 657	890.70
L472	-22	686.95	3 656	430.44	R472	-20	670.92	3 657	863.62
L473	-22	722.32	3 656	436.39	R473	-20	708.15	3 657	815.65
L474	-22	767.95	3 656	447.79	R474	-20	732.93	3 657	787.29
L475	-23	015.30	3 656	536.89	R475	-20	737.89	3 657	789.92
L476	-23	311.02	3 656	642.52	R476	-20	753.34	3 657	765.18
L477	-23	367.19	3 656	653.64	R477	-20	789.28	3 657	724.86
L478	-23	424.60	3 656	654.62	R478	-20	819.94	3 657	700.60
L479	-23	481.25	3 656	646.16	R479	-20	846.77	3 657	679.37
L480	-23	536.48	3 656	628.70	R480	-20	928.25	3 657	644.06
L481	-23	598.08	3 656	596.11	R481	-20	946.38	3 657	657.42
L482	-23	643.15	3 656	557.80	R482	-20	983.01	3 657	654.06
L483	-23	688.18	3 656	503.62	R483	-21	010.37	3 657	636.19
L484	-23	726.65	3 656	437.99	R484	-21	119.08	3 657	660.04
L485	-23	785.15	3 656	282.48	R485	-21	171.32	3 657	678.85
L486	-23	830.86	3 656	165.05	R486	-21	170.24	3 657	682.33
L487	-23	849.73	3 656	128.77	R487	-21	219.87	3 657	699.82
L488	-23	895.10	3 655	993.54	R488	-21	273.77	3 657	713.47
L489	-23	907.26	3 655	966.70	R489	-21	340.24	3 657	722.64
L490	-23	929.38	3 655	929.32	R490	-21	376.39	3 657	719.15
L491	-23	948.45	3 655	898.43	R491	-21	410.18	3 657	707.51
L492	-23	971.18	3 655	869.37	R492	-21	501.62	3 657	647.14
L493	-24	080.17	3 655	750.89	R493	-21	527.25	3 657	621.97
L494	-24	104.02	3 655	709.95	R494	-21	547.83	3 657	592.14
L495	-24	117.01	3 655	697.87	R495	-21	562.09	3 657	558.94
L496	-24	168.99	3 655	670.01	R496	-21	579.47	3 657	531.96
L497	-24	184.80	3 655	655.30	R497	-21	593.27	3 657	494.40
L498	-24	234.33	3 655	609.22	R498	-21	590.37	3 657	416.60
L499	-24	270.24	3 655	555.53	R499	-21	596.87	3 657	354.78
L500	-24	298.22	3 655	513.62	R500	-21	597.70	3 657	297.72
L501	-24	373.03	3 655	401.51	R501	-21	601.36	3 657	257.05
L502	-24	508.17	3 655	186.33	R502	-21	613.93	3 657	212.02
L503	-24	559.80	3 655	091.33	R503	-21	639.19	3 657	167.21
L504	-24	578.59	3 655	046.53	R504	-21	709.94	3 657	080.09
L505	-24	589.62	3 655	020.25	R505	-21	755.41	3 657	026.50
L506	-24	602.36	3 654	989.77	R506	-21	802.47	3 656	969.57
L507	-24	611.83	3 654	956.28	R507	-21	825.76	3 656	922.95
L508	-24	615.55	3 654	919.46	R508	-21	841.90	3 656	890.84
L509	-24	613.84	3 654	883.27	R509	-21	855.01	3 656	865.87
L510	-24	607.71	3 654	846.66	R510	-21	866.37	3 656	843.84

Vel
Sheet

27

Van
of

31

P899/16

PADRESERWE KOÖRDINATE / ROAD RESERVE CO-ORDINATES									
LINKERKANT/LEFT HAND SIDE			REGTERKANT/RIGHT HAND SIDE						
	Y	X	WG 27°	Y	X				
L511	-24	588.60	3 654	791.14	R511	-21	895.77	3 656	786.82
L512	-24	551.99	3 654	742.02	R512	-21	919.40	3 656	740.60
L513	-24	544.08	3 654	723.99	R513	-21	941.46	3 656	710.54
L514	-24	512.61	3 654	609.11	R514	-21	967.58	3 656	684.81
L515	-24	484.26	3 654	542.04	R515	-21	997.79	3 656	663.30
L516	-24	449.46	3 654	437.57	R516	-22	030.68	3 656	646.94
L517	-24	424.77	3 654	327.69	R517	-22	099.70	3 656	625.52
L518	-24	421.04	3 654	302.70	R518	-22	242.57	3 656	594.04
L519	-24	409.10	3 654	224.12	R519	-22	275.56	3 656	579.55
L520	-24	402.57	3 654	128.34	R520	-22	309.79	3 656	584.90
L521	-24	407.52	3 654	004.81	R521	-22	385.41	3 656	551.74
L522	-24	419.48	3 653	896.13	R522	-22	396.59	3 656	514.90
L523	-24	443.04	3 653	788.67	R523	-22	409.47	3 656	506.64
L524	-24	475.93	3 653	684.03	R524	-22	473.78	3 656	485.91
L525	-24	498.49	3 653	627.88	R525	-22	525.77	3 656	474.42
L526	-24	515.55	3 653	585.36	R526	-22	580.52	3 656	471.16
L527	-24	651.15	3 653	296.86	R527	-22	580.09	3 656	486.81
L528	-24	751.08	3 653	084.86	R528	-22	612.04	3 656	482.53
L529	-24	783.34	3 653	023.68	R529	-22	680.24	3 656	484.53
L530	-24	816.09	3 652	975.79	R530	-22	743.19	3 656	494.19
L531	-24	826.62	3 652	960.76	R531	-23	297.04	3 656	692.77
L532	-24	875.11	3 652	905.92	R532	-23	362.07	3 656	703.59
L533	-24	929.92	3 652	857.33	R533	-23	414.32	3 656	704.89
L534	-24	953.81	3 652	839.59	R534	-23	462.27	3 656	703.49
L535	-25	279.36	3 652	597.92	R535	-23	539.26	3 656	692.74
L536	-25	580.13	3 652	376.51	R536	-23	647.93	3 656	626.82
L537	-25	622.97	3 652	327.56	R537	-23	682.47	3 656	596.27
L538	-25	629.90	3 652	315.70	R538	-23	710.49	3 656	565.54
L539	-25	710.15	3 652	178.31	R539	-23	735.27	3 656	532.44
L540	-25	724.18	3 652	141.00	R540	-23	757.17	3 656	497.06
L541	-25	739.80	3 652	103.31	R541	-23	775.58	3 656	459.46
L542	-25	762.06	3 652	015.79	R542	-23	946.64	3 656	017.53
L543	-25	779.34	3 651	947.90	R543	-23	995.10	3 655	926.32
L544	-25	784.78	3 651	894.82	R544	-24	142.08	3 655	764.11
L545	-25	800.18	3 651	804.40	R545	-24	205.40	3 655	707.37
L546	-25	822.15	3 651	621.99	R546	-24	220.76	3 655	692.14
L547	-25	845.41	3 651	428.74	R547	-24	232.83	3 655	681.00
L548	-25	883.58	3 651	111.53	R548	-24	257.56	3 655	656.91
L549	-25	893.58	3 651	069.79	R549	-24	269.06	3 655	645.23
L550	-25	905.11	3 650	972.31	R550	-24	316.06	3 655	583.13
L551	-25	910.53	3 650	957.09	R551	-24	343.21	3 655	546.19
L552	-25	939.27	3 650	905.81	R552	-24	358.85	3 655	523.52
L553	-25	946.81	3 650	892.35	R553	-24	401.87	3 655	463.97
L554	-26	011.84	3 650	772.50	R554	-24	424.99	3 655	428.09
L555	-26	081.40	3 650	675.02	R555	-24	442.34	3 655	400.99
L556	-26	164.06	3 650	586.33	R556	-24	562.11	3 655	200.94
L557	-26	259.62	3 650	498.09	R557	-24	637.96	3 655	074.09
L558	-26	324.61	3 650	438.09	R558	-24	644.75	3 655	037.36
L559	-26	348.01	3 650	412.59	R559	-24	667.18	3 654	915.92
L560	-26	364.08	3 650	399.41	R560	-24	665.18	3 654	877.74
L561	-26	385.84	3 650	381.56	R561	-24	658.05	3 654	836.27

Vel 28
Sheet

Van 31
of

P899/16

PADRESERWE KOÖRDINATE / ROAD RESERVE CO-ORDINATES											
LINKERKANT/LEFT HAND SIDE				REGTERKANT/RIGHT HAND SIDE							
	Y		X	WG 27°	Y	X					
L562	-26	487.78	3	650	287.43	R562	-24	644.99	3	654	796.70
L563	-26	622.12	3	650	163.39	R563	-24	628.49	3	654	718.28
L564	-26	734.60	3	650	059.55	R564	-24	594.88	3	654	665.01
L565	-26	854.97	3	649	948.52	R565	-24	538.59	3	654	526.36
L566	-26	890.61	3	649	910.12	R566	-24	505.14	3	654	430.46
L567	-26	952.19	3	649	858.71	R567	-24	496.17	3	654	396.23
L568	-27	057.80	3	649	761.42	R568	-24	478.52	3	654	320.74
L569	-27	081.21	3	649	734.13	R569	-24	466.29	3	654	237.43
L570	-27	170.68	3	649	648.25	R570	-24	450.62	3	654	117.83
L571	-27	240.40	3	649	599.86	R571	-24	470.15	3	653	917.17
L572	-27	277.36	3	649	579.01	R572	-24	494.16	3	653	807.82
L573	-27	313.78	3	649	564.36	R573	-24	525.13	3	653	703.04
L574	-27	362.08	3	649	555.85	R574	-24	558.86	3	653	622.76
L575	-27	423.49	3	649	549.68	R575	-24	604.49	3	653	523.63
L576	-27	579.73	3	649	501.73	R576	-24	678.43	3	653	366.04
L577	-27	651.36	3	649	473.46	R577	-24	798.25	3	653	110.68
L578	-27	690.20	3	649	448.10	R578	-24	830.09	3	653	049.94
L579	-27	696.79	3	649	442.83	R579	-24	871.93	3	652	991.73
L580	-27	775.78	3	649	373.32	R580	-24	913.86	3	652	944.89
L581	-27	826.63	3	649	310.13	R581	-24	968.92	3	652	895.82
L582	-27	837.81	3	649	287.30	R582	-25	199.73	3	652	724.41
L583	-27	861.24	3	649	236.72	R583	-25	598.75	3	652	428.12
L584	-27	882.65	3	649	159.69	R584	-25	663.14	3	652	357.65
L585	-27	877.02	3	649	132.07	R585	-25	713.30	3	652	271.54
L586	-27	876.99	3	649	123.16	R586	-25	754.61	3	652	200.63
L587	-27	891.54	3	649	068.62	R587	-25	786.07	3	652	121.54
L588	-27	914.97	3	648	919.60	R588	-25	796.68	3	652	079.93
L589	-27	924.46	3	648	739.93	R589	-25	846.62	3	651	996.52
L590	-27	928.04	3	648	540.24	R590	-25	848.56	3	651	980.62
L591	-27	987.22	3	648	307.21	R591	-25	847.03	3	651	867.77
L592	-28	004.33	3	648	249.93	R592	-25	863.09	3	651	733.68
L593	-28	027.35	3	648	135.79	R593	-25	882.94	3	651	567.90
L594	-28	046.07	3	648	051.70	R594	-25	901.82	3	651	410.28
L595	-28	063.03	3	647	969.60	R595	-25	939.92	3	651	092.18
L596	-28	096.71	3	647	755.17	R596	-25	967.77	3	650	980.33
L597	-28	103.71	3	647	710.62	R597	-26	003.26	3	650	905.76
L598	-28	095.93	3	647	663.51	R598	-26	053.52	3	650	800.17
L599	-28	098.86	3	647	646.83	R599	-26	120.81	3	650	706.12
L600	-28	121.37	3	647	603.36	R600	-26	197.41	3	650	623.88
L601	-28	131.95	3	647	487.08	R601	-26	262.58	3	650	564.55
L602	-28	157.01	3	647	233.87	R602	-26	316.12	3	650	515.81
L603	-28	169.06	3	647	143.49	R603	-26	458.70	3	650	384.36
L604	-28	207.17	3	646	864.62	R604	-26	534.35	3	650	313.98
L605	-28	242.72	3	646	687.28	R605	-26	705.46	3	650	154.79
L606	-28	312.59	3	646	464.49	R606	-26	741.68	3	650	121.62
L607	-28	385.31	3	646	354.68	R607	-26	845.70	3	650	027.16
L608	-28	476.43	3	646	241.66	R608	-26	934.77	3	649	946.25
L609	-28	484.22	3	646	232.00	R609	-26	972.54	3	649	912.04
L610	-28	644.01	3	646	051.89	R610	-27	021.50	3	649	867.71
L611	-28	682.15	3	646	000.81	R611	-27	042.48	3	649	848.71
L612	-28	705.40	3	645	969.08	R612	-27	206.54	3	649	701.54

Vel 29
SheetVan 31
of

P899/16

PADRESERWE KOÖRDINATE / ROAD RESERVE CO-ORDINATES											
LINKERKANT/LEFT HAND SIDE				REGTERKANT/RIGHT HAND SIDE							
	Y		X	WG 27°	Y	X					
L613	-28	721.23	3	645	947.66	R613	-27	322.26	3	649	639.95
L614	-28	747.05	3	645	906.03	R614	-27	344.30	3	649	631.04
L615	-28	803.02	3	645	815.78	R615	-27	422.35	3	649	605.97
L616	-28	806.83	3	645	809.63	R616	-27	582.05	3	649	558.95
L617	-28	851.17	3	645	721.50	R617	-27	595.50	3	649	554.92
L618	-28	860.15	3	645	703.64	R618	-27	659.28	3	649	529.29
L619	-28	890.67	3	645	628.11	R619	-27	749.27	3	649	469.19
L620	-28	905.19	3	645	592.19	R620	-27	812.19	3	649	407.66
L621	-28	924.99	3	645	531.12	R621	-27	845.85	3	649	360.93
L622	-28	942.39	3	645	477.47	R622	-27	881.67	3	649	309.26
L623	-28	955.78	3	645	419.05	R623	-27	929.13	3	649	221.87
L624	-28	969.28	3	645	360.11	R624	-27	931.70	3	649	208.75
L625	-28	978.27	3	645	297.57	R625	-27	931.62	3	649	121.84
L626	-28	986.47	3	645	240.50	R626	-27	992.87	3	648	759.01
L627	-28	991.31	3	645	172.69	R627	-27	997.83	3	648	734.72
L628	-28	992.83	3	645	077.61	R628	-28	088.70	3	648	414.10
L629	-28	989.64	3	645	042.37	R629	-28	079.25	3	648	249.89
L630	-28	975.65	3	644	899.56	R630	-28	085.59	3	648	209.41
L631	-28	968.40	3	644	828.31	R631	-28	095.62	3	648	145.34
L632	-28	946.39	3	644	726.31	R632	-28	119.81	3	648	087.89
L633	-28	930.58	3	644	685.09	R633	-28	120.54	3	648	052.40
L634	-28	901.27	3	644	608.60	R634	-28	113.85	3	647	998.18
L635	-28	886.58	3	644	570.29	R635	-28	138.16	3	647	843.02
L636	-28	862.51	3	644	444.37	R636	-28	218.99	3	647	328.43
L637	-28	827.22	3	644	389.55	R637	-28	247.23	3	647	202.00
L638	-28	820.75	3	644	374.85	R638	-28	276.77	3	647	079.57
L639	-28	812.35	3	644	323.55	R639	-28	306.61	3	646	967.76
L640	-28	737.01	3	644	176.88	R640	-28	392.11	3	646	744.94
L641	-28	686.08	3	644	053.31	R641	-28	750.97	3	646	035.22
L642	-28	661.25	3	643	966.12	R642	-28	802.48	3	645	934.33
L643	-28	408.71	3	643	389.31	R643	-28	850.61	3	645	840.05
L644	-28	291.86	3	643	122.44	R644	-28	856.72	3	645	828.09
L645	-28	280.23	3	643	096.59	R645	-28	898.73	3	645	745.80
L646	-28	240.97	3	643	007.15	R646	-28	936.46	3	645	651.48
L647	-28	213.06	3	642	928.70	R647	-28	953.35	3	645	609.25
L648	-28	195.41	3	642	845.58	R648	-28	970.95	3	645	554.59
L649	-28	189.17	3	642	774.13	R649	-28	991.43	3	645	490.98
L650	-28	192.81	3	642	687.87	R650	-29	002.50	3	645	442.91
L651	-28	207.62	3	642	601.35	R651	-29	019.41	3	645	369.53
L652	-28	223.42	3	642	532.18	R652	-29	026.20	3	645	322.07
L653	-28	227.45	3	642	447.47	R653	-29	037.04	3	645	246.32
L654	-28	231.40	3	642	430.51	R654	-29	049.45	3	645	072.90
L655	-28	258.35	3	642	380.40	R655	-29	053.62	3	645	013.06
L656	-28	313.71	3	642	141.01	R656	-29	046.04	3	644	942.61
L657	-28	347.70	3	642	024.79	R657	-29	044.12	3	644	934.44
L658	-28	370.37	3	641	971.73	R658	-29	022.13	3	644	740.57
L659	-28	374.18	3	641	922.87	R659	-29	013.16	3	644	665.67
L660	-28	341.67	3	641	888.80	R660	-28	998.83	3	644	581.03
L661	-28	365.00	3	641	847.03	R661	-28	938.71	3	644	470.28
L662	-28	411.90	3	641	855.35	R662	-28	907.34	3	644	405.19
L663	-28	448.54	3	641	824.00	R663	-28	894.49	3	644	380.40

Vel 30
Sheet

Van 31
of

P899/16

PADRESERWE KOÖRDINATE / ROAD RESERVE CO-ORDINATES											
LINKERKANT/LEFT HAND SIDE					REGTERKANT/RIGHT HAND SIDE						
	Y		X	WG 27°		Y		X			
L664	-28	456.88	3	641	810.03	R664	-28	784.96	3	644	101.45
L665	-28	532.92	3	641	716.47	R665	-28	745.21	3	643	972.91
L666	-28	617.16	3	641	630.42	R666	-28	643.65	3	643	790.37
L667	-28	717.70	3	641	554.14	R667	-28	460.14	3	643	370.25
L668	-28	817.69	3	641	495.98	R668	-28	437.73	3	643	318.77
L669	-28	928.94	3	641	451.30	R669	-28	349.07	3	643	115.11
L670	-28	962.87	3	641	440.72	R670	-28	293.00	3	642	986.33
L671	-28	973.43	3	641	437.39	R671	-28	261.60	3	642	914.21
L672	-29	545.45	3	641	258.57	R672	-28	245.94	3	642	843.08
L673	-30	380.32	3	640	998.12	R673	-28	239.64	3	642	769.65
L674	-30	418.86	3	640	970.39	R674	-28	242.81	3	642	695.43
L675	-30	424.24	3	640	937.29	R675	-28	254.08	3	642	621.09
L676	-30	457.66	3	640	926.87	R676	-28	298.64	3	642	429.92
L677	-30	480.92	3	640	951.05	R677	-28	363.26	3	642	152.74
L678	-30	528.35	3	640	951.98	R678	-28	371.24	3	642	125.39
L679	-30	643.55	3	640	916.07	R679	-28	417.84	3	641	980.86
L680	-30	708.28	3	640	895.26	R680	-28	490.12	3	641	849.42
L681	-30	813.61	3	640	863.01	R681	-28	583.59	3	641	732.11
L682	-31	052.51	3	640	787.62	R682	-28	695.55	3	641	632.27
L683	-31	090.96	3	640	759.76	R683	-28	822.74	3	641	552.75
L684	-31	091.86	3	640	712.08	R684	-28	961.51	3	641	495.83
L685	-31	127.75	3	640	705.13	R685	-29	565.25	3	641	307.29
L686	-31	152.94	3	640	740.19	R686	-30	396.15	3	641	047.81
L687	-31	200.19	3	640	741.14	R687	-30	443.54	3	641	050.05
L688	-32	147.30	3	640	445.66	R688	-30	468.00	3	641	079.31
L689	-32	158.26	3	640	440.67	R689	-30	501.52	3	641	069.23
L690	-32	257.38	3	640	396.61	R690	-30	506.12	3	641	032.42
L691	-32	360.21	3	640	334.69	R691	-30	543.86	3	641	001.68
L692	-32	452.99	3	640	257.83	R692	-31	068.46	3	640	837.85
L693	-32	534.70	3	640	169.72	R693	-31	115.86	3	640	839.51
L694	-32	582.75	3	640	106.94	R694	-31	142.92	3	640	878.34
L695	-32	625.64	3	640	037.60	R695	-31	176.42	3	640	868.21
L696	-32	677.72	3	639	927.63	R696	-31	178.07	3	640	820.69
L697	-32	685.93	3	639	905.92	R697	-31	216.43	3	640	791.64
L698	-32	702.89	3	639	869.16	R698	-32	118.73	3	640	509.86
L699	-32	722.77	3	639	832.48	R699	-32	190.56	3	640	487.43
L700	-32	728.12	3	639	821.18	R700	-32	325.03	3	640	419.85
L701	-32	748.73	3	639	758.61	R701	-32	446.98	3	640	331.67
L702	-32	774.31	3	639	701.80	R702	-32	552.73	3	640	224.59
L703	-32	774.66	3	639	656.80	R703	-32	640.25	3	640	102.16
L704	-32	739.47	3	639	656.26	R704	-32	673.31	3	640	034.55
L705	-32	725.03	3	639	624.38	R705	-32	684.49	3	640	010.99
L706	-32	864.66	3	639	541.70	R706	-32	794.03	3	639	771.02
L707	-32	906.69	3	639	494.37	R707	-32	843.33	3	639	670.58
L708	-32	911.80	3	639	490.80	R708	-32	853.92	3	639	651.51
						R709	-32	884.83	3	639	602.93
						R710	-32	930.41	3	639	551.66

Vel	31	Van	31	P899/16
Sheet		of		